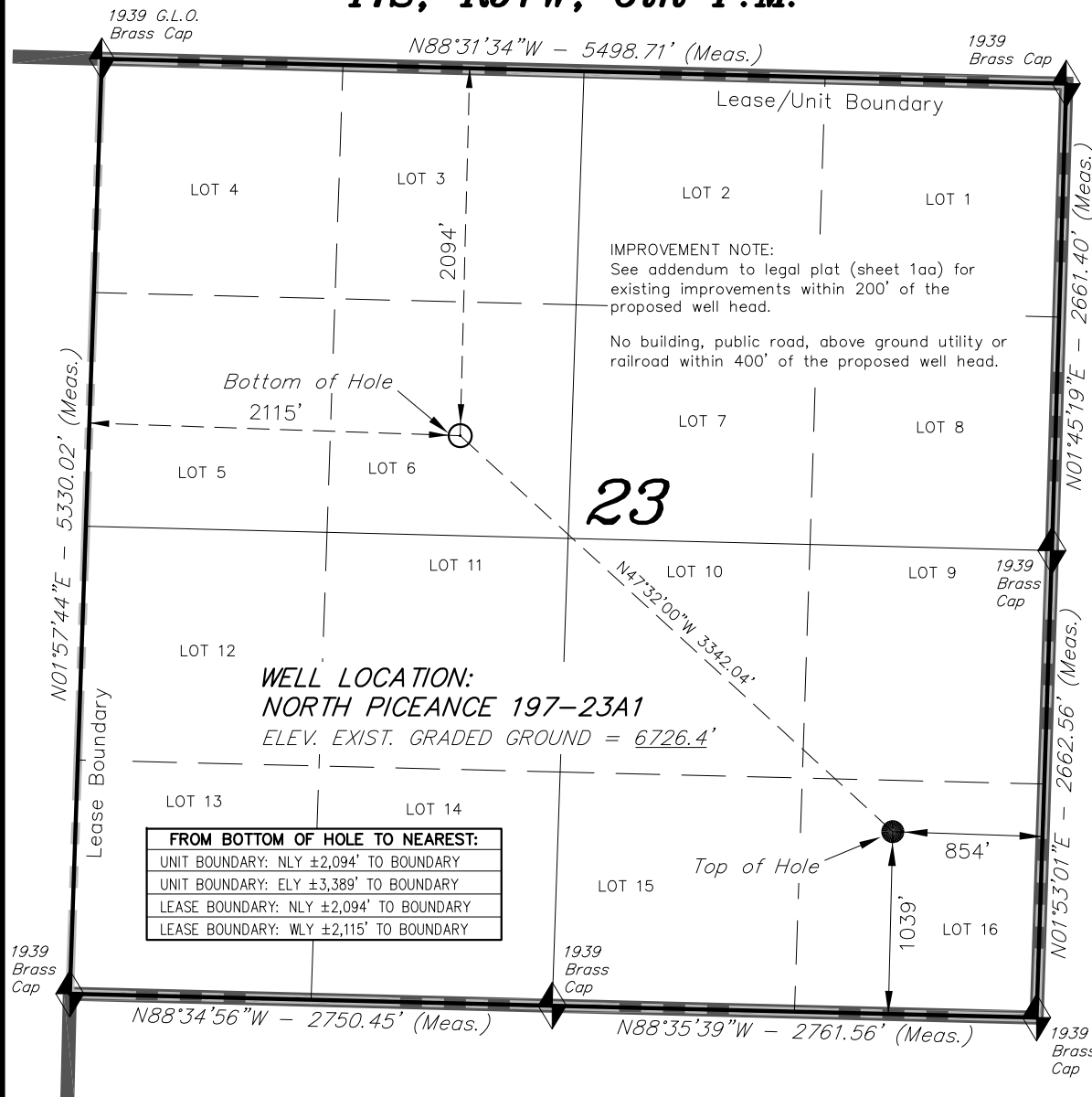
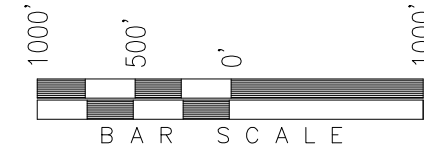


**T1S, R97W, 6th P.M.**

**XTO ENERGY INC.**



WELL LOCATION, NORTH PICEANCE 197-23A1, LOCATED AS SHOWN IN THE SE 1/4 SE 1/4 (LOT 16) OF SECTION 23, T1S, R97W, 6th P.M., RIO BLANCO COUNTY, COLORADO.



◆ = SECTION CORNERS LOCATED

### BASIS OF BEARINGS & BASIS OF ELEVATION

BASIS OF BEARINGS IS A LINE BETWEEN MAGNOLIA & MEYERS TRIANGULATION STATION GRID COORDINATES WHICH IS ASSUMED TO BEAR S82°36'07"E.

BASIS OF ELEVATIONS IS MAGNOLIA TRIANGULATION STATION LOCATED IN THE NW 1/4 OF SECTION 9, T2S, R96W, 6th P.M. REPORTED FROM THE NATIONAL GEODETIC SURVEY AS BEING 7529 FEET (NAVD 88). WE MEASURED IT TO BE 7526.2'

### NOTES:

1. Well footages are measured at right angles to the Section Lines.
2. Bearings are based on Global Positioning Satellite observations.
3. G.P.S. Operator: D. PETTY, (PDOP) = 2.1

THIS IS TO CERTIFY THAT THE ABOVE PLAT WAS PREPARED FROM FIELD NOTES OF ACTUAL SURVEYS MADE BY ME OR UNDER MY SUPERVISION, THE LOCATION HAS BEEN MARKED ON THE GROUND AS SHOWN ON THE PLAT, AND THAT THE SAME ARE TRUE AND CORRECT TO THE BEST OF MY KNOWLEDGE AND BELIEF.

REGISTERED LAND SURVEYOR  
REGISTRATION NO. 13012  
STATE OF COLORADO

### TRI STATE LAND SURVEYING & CONSULTING

180 NORTH VERNAL AVE. - VERNAL, UTAH 84078  
(435) 781-2501

DATE SURVEYED: 08-21-07	SURVEYED BY: D.P.	SHEET 1a
DATE DRAWN: 09-10-07	DRAWN BY: D.COX	
REVISED: L.C.S. 12-09-14	SCALE: 1" = 1000'	

CO-NORTH NAD 83 (SURFACE LOCATION)	CO-NORTH NAD 83 (BOTTOM HOLE)	FROM SURFACE LOCATION TO NEAREST:
LATITUDE = 39°56'44.00" (39.945556)	LATITUDE = 39°57'05.53" (39.951536)	TOWN/COMMUNITY: NE 18.5 MILES TO MEEKER
LONGITUDE = 108°14'30.04" (108.241678)	LONGITUDE = 108°15'02.57" (108.250713)	UNIT BOUNDARY: SLY ±1,039' TO BOUNDARY
STATE PLANE COORDINATES	STATE PLANE COORDINATES	UNIT BOUNDARY: ELY ±854' TO BOUNDARY
N: = 1234897.082 E: = 2231418.424	N: = 1237152.707 E: = 2228953.976	LEASE BOUNDARY: SLY ±1,039' TO BOUNDARY
CO-NORTH NAD 27 (SURFACE LOCATION)	CO-NORTH NAD 27 (BOTTOM HOLE)	LEASE BOUNDARY: ELY ±854' TO BOUNDARY
LATITUDE = 39°56'44.10" (39.945584)	LATITUDE = 39°57'05.63" (39.951564)	EXISTING WELL: NWLY ±9,239' TO 22-1-97 INDIAN
LONGITUDE = 108°14'27.73" (108.241037)	LONGITUDE = 108°15'00.26" (108.250071)	WELLS-FED
STATE PLANE COORDINATES	STATE PLANE COORDINATES	
N: = 234897.946 E: = 1231578.256	N: = 237153.553 E: = 1229113.824	