

The Road to Excellence Starts with Safety

Sold To #: 303302	Ship To #: 3557262	Quote #: 0021931108	Sales Order #: 0901689786
Customer: KGH OPERATING CO		Customer Rep: Roger French	
Well Name: MEAGHER	Well #: 3-3H	API/UWI #: 05-103-12121-00	
Field: BLANCO	City (SAP): RANGELY	County/Parish: RIO BLANCO	State: COLORADO
Legal Description: 3-1S-104W-3836FSL-200FEL			
Contractor:		Rig/Platform Name/Num:	
Job BOM: 7521			
Well Type: HORIZONTAL OIL			
Sales Person: HALAMERICA\HB72042		Srvc Supervisor: Michael Porter	
Job			

Formation Name			
Formation Depth (MD)	Top		Bottom
Form Type			BHST
Job depth MD	6118ft		Job Depth TVD
Water Depth			Wk Ht Above Floor
Perforation Depth (MD)	From		To

Well Data										
Description	New / Used	Size in	ID in	Weight lbm/ft	Thread	Grade	Top MD ft	Bottom MD ft	Top TVD ft	Bottom TVD ft
Casing		9.625	8.921	36			0	1005		
Casing		7	6.276	26			0	6110	0	0
Open Hole Section			8.75				1005	6118		0

Tools and Accessories									
Type	Size in	Qty	Make	Depth ft		Type	Size in	Qty	Make
Guide Shoe	7					Top Plug	7	1	HES
Float Shoe	7								
Float Collar	7	1		6068					
						Plug Container	7	1	HES
						Centralizers	7		

Miscellaneous Materials											
Gelling Agt		Conc		Surfactant		Conc		Acid Type		Qty	Conc
Treatment Fld		Conc		Inhibitor		Conc		Sand Type		Size	Qty

Fluid Data										
Stage/Plug #: 1										
Fluid #	Stage Type	Fluid Name	Qty	Qty UoM	Mixing Density lbm/gal	Yield ft3/sack	Mix Fluid Gal	Rate bbl/min	Total Mix Fluid Gal	
1	10.5 lb/gal Tuned Spacer III	Tuned Spacer III	30	bbl	10.5	6.16		4		
90.31 lbm/bbl		BARITE, 100 LB SK (100003680)								
36.83 gal/bbl		FRESH WATER								

Fluid #	Stage Type	Fluid Name	Qty	Qty UoM	Mixing Density lbm/gal	Yield ft3/sack	Mix Fluid Gal	Rate bbl/mi n	Total Mix Fluid Gal
2	EconoCem	ECONOCER (TM) SYSTEM	160	sack	11	3.5		4	20.92
5 lbm		KOL-SEAL, 50 LB BAG (100064232)							
0.25 lbm		POLY-E-FLAKE (101216940)							
1 lbm		GRANULITE TR 1/4, 50 LB SK (100064073)							
21.31 Gal		FRESH WATER							
Fluid #	Stage Type	Fluid Name	Qty	Qty UoM	Mixing Density lbm/gal	Yield ft3/sack	Mix Fluid Gal	Rate bbl/mi n	Total Mix Fluid Gal
3	ExpandaCem	EXPANDACER (TM) SYSTEM	385	sack	14	1.35		4	5.82
2 lbm		KOL-SEAL, 50 LB BAG (100064232)							
1 lbm		GRANULITE TR 1/4, 50 LB SK (100064073)							
0.25 lbm		POLY-E-FLAKE (101216940)							
Fluid #	Stage Type	Fluid Name	Qty	Qty UoM	Mixing Density lbm/gal	Yield ft3/sack	Mix Fluid Gal	Rate bbl/mi n	Total Mix Fluid Gal
5	Water Displacement		232	bbl	10			4	
Cement Left In Pipe		Amount	42 ft		Reason		Shoe Joint		
Comment									

Summary Report



Crew: _____

Job Start Date: 9/29/2014

Sales Order #: 0901689786

WO #: 0901689786

PO/AFE #: NA

Customer: KGH OPERATING CO

UWI / API Number: 05-103-12121-00

Well Name: MEAGHER

Well No: 3-3H

Field: BLANCO

County/Parish: RIO BLANCO

State: COLORADO

Latitude: 39.993586

Longitude: -109.046129

Sect / Twn / Rng: 3/1/104

Job Type: CMT SURFACE
CASING BOM

Service Supervisor: Michael Porter

Cust Rep Name: Roger French

Cust Rep Phone #: _____

Remarks:

The Information Stated Herein Is Correct	Customer Representative Signature 	Date
	Customer Representative Printed Name Roger French	

HALLIBURTON ENERGY SERVICES

M. S. D. S. RECEIPT DOCUMENT

This receipt page is intended for use with Material Safety Data Sheets supplied by Halliburton Energy Services. The recipients of these data sheets should consult the OSHA Safety and Health Standards (29 CFR 1910), particularly subpart G - Occupational Health and Environmental Control, and subpart I - Personal Protective Equipment, for general guidance on control of potential Occupational Health and Safety Hazards.

This document provides the customer the instructions necessary to utilize the M. S. D. S. Safety Sheets and confirms that Halliburton Energy Services offers the Customer the communication for discussion on Chemical Safety of the provided materials.


Customer Signature

Please Print

Company : KGH Operating Co

Lease, Well Name, Nbr : Meagher 3-3H

Ticket # : 901689786

Location : Frontier 6 Colorado

(To be completed by Service Supervisor)

HALLIBURTON

iCem[®] Service

KGH OPERATING CO.

For: Roger

Date: Monday, September 29, 2014

Meagher 3-3H

Intermediate

Sincerely,
Mike Porter

Table of Contents

1.1	Job Event Log	4
2.0	Attachments	8
2.1	JOB WITH EVENTS.png	8
2.2	JOB WITHOUT EVENTS.png	9
2.3	PRE JOB PRESSURE TEST.png	10
3.0	Appendix	11

1.1 Job Event Log

Type	Seq. No.	Activity	Graph Label	Date	Time	Source	Comb Pump Rate (bbl/min)	DH Density (ppg)	DS Pump Press (psi)	Comments
Event	1	Call Out	Call Out	9/28/2014	19:00:00	USER				CALL OUT CREW, REQUESTED ON LOCATION AT 01:00
Event	2	Pre-Convoy Safety Meeting	Pre-Convoy Safety Meeting	9/28/2014	21:45:00	USER				PRE CONVOY SAFETY MEETING TO DISCUSS DIRECTIONS TO LOCATION AND HAZARDS OF DRIVING TO LOCATION IN THE RAIN
Event	3	Depart Shop for Location	Depart Shop for Location	9/28/2014	22:00:00	USER				DEPART FOR LOCATION
Event	4	Arrive At Loc	Arrive At Loc	9/29/2014	01:30:00	USER				ARRIVE AT LOCATION, RIG RUNNING CASING CASING ON BOTTOM, RIG BEGINS TO CIRCULATE, HES CREW WAITS FOR CASING CREW TO RIG DOWN AND DEPART LOCATION
Event	5	Casing on Bottom	Casing on Bottom	9/29/2014	04:00:00	USER				
Event	6	Assessment Of Location Safety Meeting	Assessment Of Location Safety Meeting	9/29/2014	05:00:00	USER				SITE ASSESSMENT SAFETY HUDDLE TO IDENTIFY HAZARDS ON LOCATION AND DISCUSS WHERE TO SPOT EQUIPMENT
Event	7	Pre-Rig Up Safety Meeting	Pre-Rig Up Safety Meeting	9/29/2014	05:15:00	USER				PRE RIG UP SAFETY MEETING TO DISCUSS HAZARDS OF RIGIN UP EQUIPMENT
Event	8	Rig-Up Equipment	Rig-Up Equipment	9/29/2014	05:30:00	USER				RIG UP EQUIPMENT ON THE GROUND
Event	9	Rig-Up Completed	Rig-Up Completed	9/29/2014	06:30:00	USER	0.00	0.15	83.00	FINISHED RIGGING UP EQUIPMENT ON THE GROUND

Type	Seq. No.	Activity	Graph Label	Date	Time	Source	Comb Pump Rate (bbl/min)	DH Density (ppg)	DS Pump Press (psi)	Comments
Event	10	Start Job	Start Job	9/29/2014	06:41:28	COM2	0.00	0.20	83.00	PRE JOB SAFETY MEETING TO DISCUSS LIFTING EQUIPMENT TO THE RIG FLOOR, THE JOB PROCEDURE, PRESSURE TESTING PROCEDURE AND HAZARDS ASSOCIATED WITH THE JOB
Event	11	Pre-Job Safety Meeting	Pre-Job Safety Meeting	9/29/2014	07:00:00	USER	0.00	0.12	83.00	
Event	12	Rig-Up Completed	Rig-Up Completed	9/29/2014	07:35:00	USER	0.00	8.43	90.00	FINISHED RIGGING UP EQUIPMENT TO FLOOR
Event	13	Other	Fill Lines	9/29/2014	07:48:31	USER	0.00	8.47	77.00	FILL LINES TO PRESSURE TEST
Event	14	Test Lines	Test Lines	9/29/2014	07:52:39	COM2	0.00	8.57	5453.00	PRESSURE TEST HES IRON TO 5400 PSI
Event	15	Check Weight	Check weight	9/29/2014	07:58:35	COM2	0.00	8.47	80.00	VERIFY DENSITY OF TUNED SPACER WITH MUD SCALES
Event	16	Pump Spacer 1	Pump Tuned Spacer	9/29/2014	08:00:44	COM2	0.80	8.49	82.00	PUMP TUNED SPACER, 10.5 PPG
Event	17	Pump Lead Cement	Pump Lead Cement	9/29/2014	08:08:46	COM2	4.30	11.16	403.00	PUMP LEAD CEMENT, 160 SACKS, 11.0 PPG, 3.5 YIELD, 20.92 WATER REQ
Event	18	Check Weight	Check weight	9/29/2014	08:10:28	COM2	4.50	11.14	585.00	VERIFY DENSITY OF LEAD CEMENT WITH MUD SCALES
Event	19	Check Weight	Check weight	9/29/2014	08:31:44	COM2	4.10	13.40	347.00	VERIFY DENSITY OF TAIL CEMENT WITH MUD SCALES
Event	20	Pump Tail Cement	Pump Tail Cement	9/29/2014	08:32:12	COM2	4.10	13.80	367.00	PUMP TAIL CEMENT, 385 SACKS, 14 PPG, 1.35 YIELD, 5.82 WATER REQ
Event	21	Shutdown	Shutdown	9/29/2014	08:54:40	USER	0.00	13.58	113.00	SHUTDOWN TO DROP TOP PLUG, WASHUP ON

Type	Seq. No.	Activity	Graph Label	Date	Time	Source	Comb Pump Rate (bbl/min)	DH Density (ppg)	DS Pump Press (psi)	Comments
TOP OF THE PLUG										
Event	22	Drop Top Plug	Drop Top Plug	9/29/2014	08:57:18	USER	0.00	13.47	75.00	DROP TOP PLUG, WITNESSED BY TOOL PUSHER AND DRILLER
PUMP WATER DISPLACEMENT FOLLOWING PUMP SCHEDULE REQUESTED BY HES ENGINEER										
Event	23	Pump Displacement	Pump Displacement	9/29/2014	08:58:35	COM2	0.80	13.47	78.00	
SLOW RATE TO 4 BPM AS PER SCHEDULE										
Event	24	Slow Rate	Slow Rate	9/29/2014	09:07:34	USER	4.10	8.28	155.00	
DISPLACEMENT REACHED CEMENT										
Event	25	Displ Reached Cmnt	Displ Reached Cmnt	9/29/2014	09:17:23	COM2	4.00	8.42	144.00	
SLOW RATE TO 3 BPM AS PER PUMP SCHEDULE										
Event	26	Slow Rate	Slow Rate	9/29/2014	09:30:27	USER	2.50	8.45	540.00	
SLOW RATE TO 2 BPM AS PER PUMP SCHEDULE										
Event	27	Slow Rate	Slow Rate	9/29/2014	09:56:28	USER	2.00	8.40	1492.00	
BUMP PLUG, FINAL CIRCULATING PRESSURE 1550 PS										
Event	28	Bump Plug	Bump Plug	9/29/2014	10:02:43	COM2	0.00	8.51	1915.00	
CHECK FLOATS, GOT 1.5 BBLs BACK TO THE TRUCK										
Event	29	Check Floats	Check Floats	9/29/2014	10:04:58	USER	0.00	8.50	1737.00	
PRE RIG DOWN SAFETY MEETING TO DISCUSS HAZARDS OF RIGGING DOWN EQUIPMENT										
Event	30	Pre-Rig Down Safety Meeting	Pre-Rig Down Safety Meeting	9/29/2014	10:05:00	USER	0.00	8.48	1587.00	
RIG DOWN EQUIPMENT										
Event	31	End Job	End Job	9/29/2014	10:06:03	COM2	0.00	8.52	84.00	
THANKS FOR CHOOSING HALLIBURTON										
Event	32	Rig-Down Equipment	Rig-Down Equipment	9/29/2014	10:15:00	USER	0.00	8.28	71.00	
FINISHED RIGGING DOWN EQUIPMENT										
Event	33	Other	Other	9/29/2014	10:55:16	USER				
PRE CONVOY SAFETY MEETING TO DISCUSS										
Event	34	Rig-Down Completed	Rig-Down Completed	9/29/2014	11:15:00	USER				
iCem® Service										
Event	35	Pre-Convoy Safety Meeting	Pre-Convoy Safety Meeting	9/29/2014	11:45:00	USER				

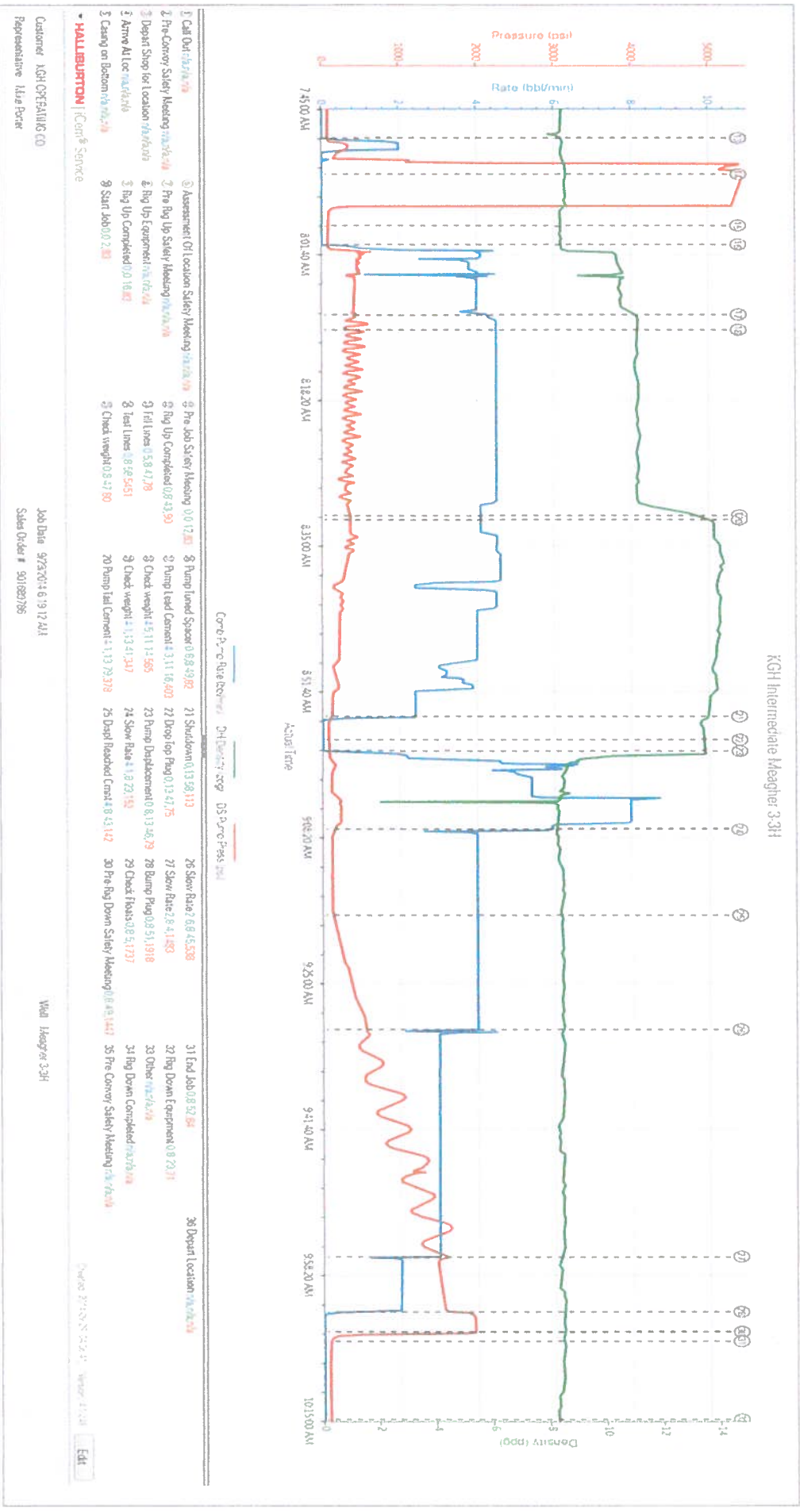
HALLIBURTON

KGH OPERATING CO.
SO 901689786
Intermediate

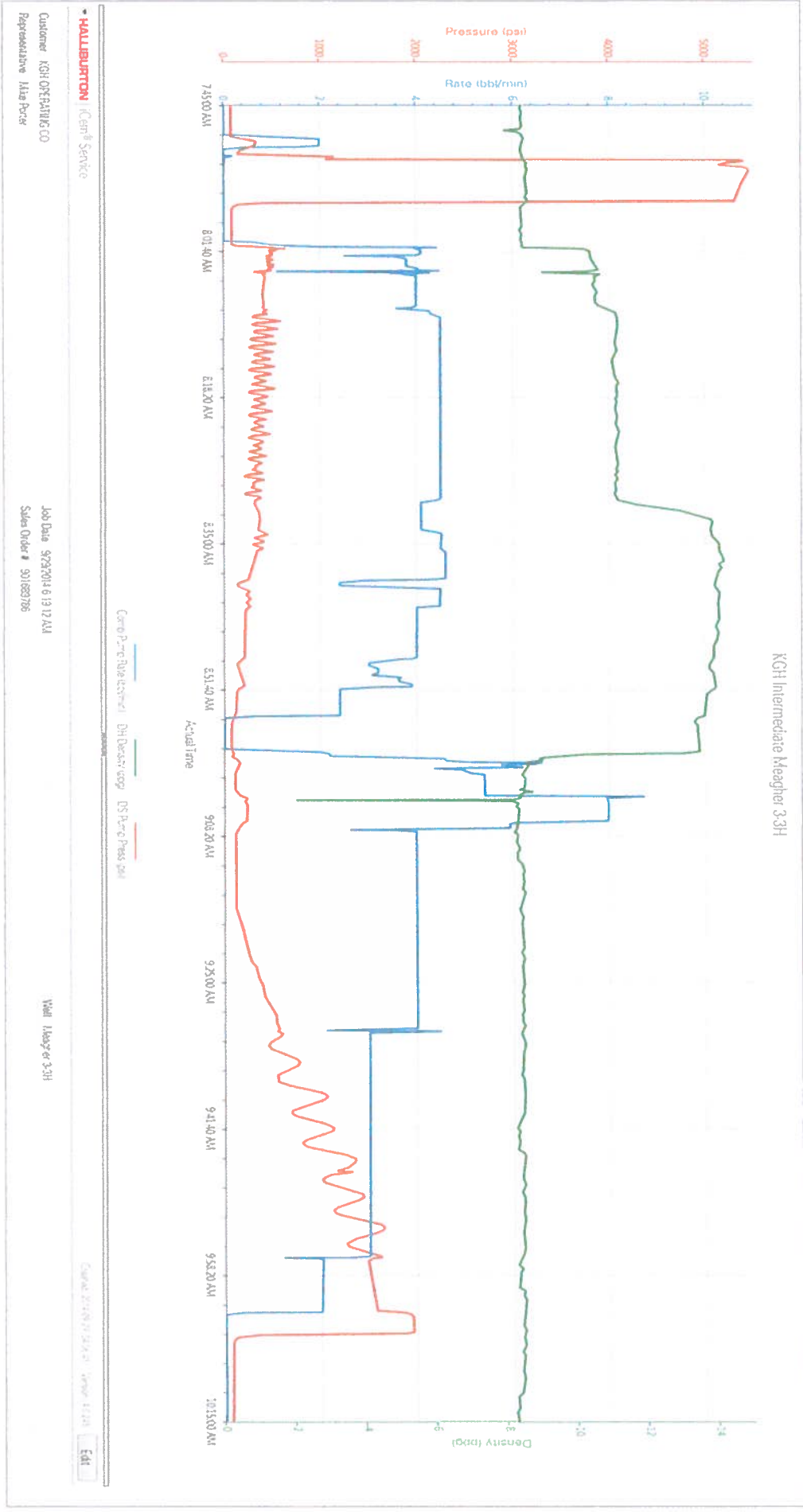
Type	Seq. No.	Activity	Graph Label	Date	Time	Source	Comb Pump Rate (bbl/min)	DH Density (ppg)	DS Pump Press (psi)	Comments
DIRECTIONS AND HAZARDS OF DRIVING										
Event	36	Depart Location	Depart Location	9/29/2014	12:00:00	USER				HES CREW DEPARTS LOCATION

2.0 Attachments

2.1 JOB WITH EVENTS.png



2.2 JOB WITHOUT EVENTS.png



2.3 PRE JOB PRESSURE TEST .png

