

Synergy Resources

Well Name: **SRC Gies T-15-22CHZ**

Surface Location: SRC Gies Pad Sec.15-T7N-R65W

North American Datum 1983 , US State Plane 1983 , Colorado Northern Zone

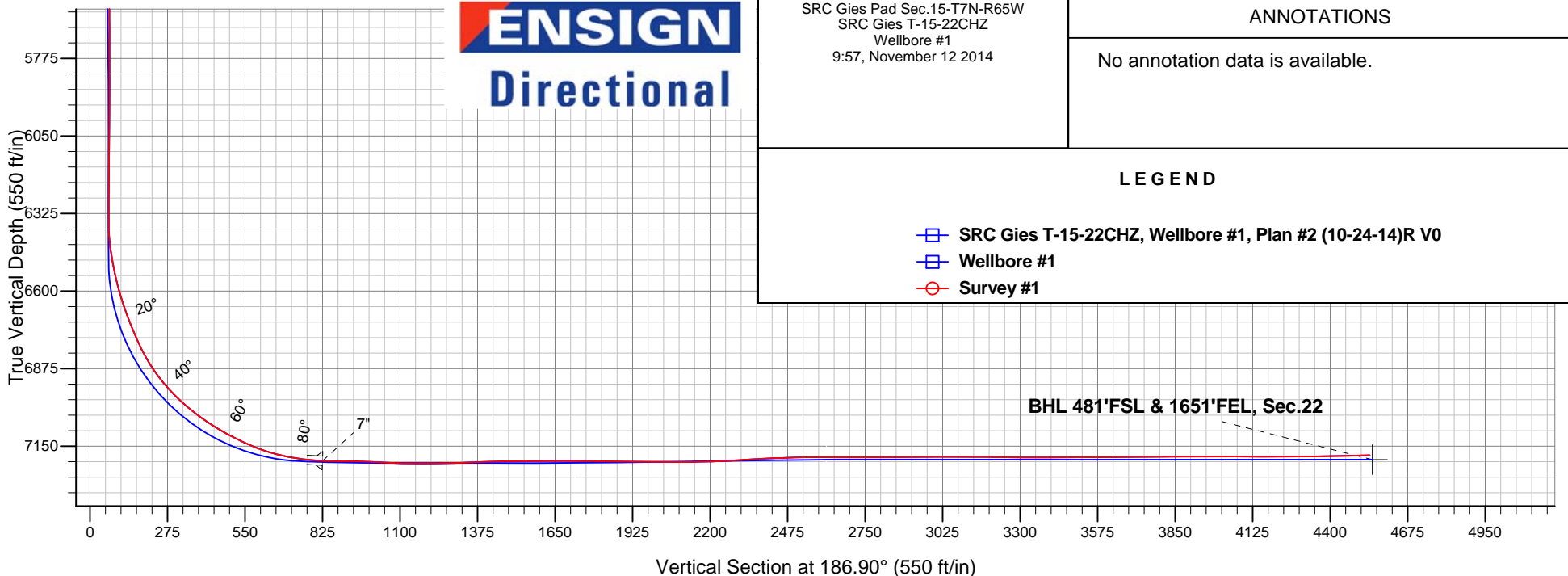
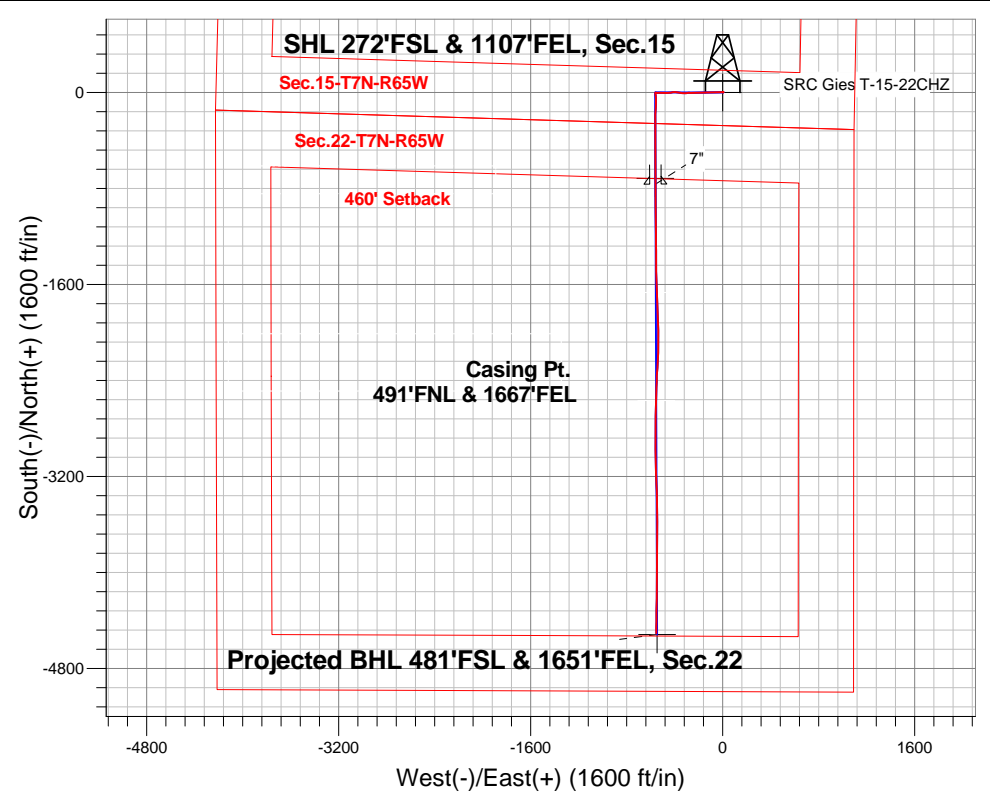
Ground Elevation: 4838.0

+N/-S	+E/-W	Northing	Easting	Latitude	Longitude	Slot
0.0	0.0	1450673.51	3237898.79	40.567345	-104.643690	

Ensign Rig #134 - RKB - 14' WELL @ 4852.0ft (Ensign Rig #134 - RKB - 14')

FINAL SURVEY

Projected Bottom Hole Location
11397'MD 7183'TVD 4506'S & 553'W of SHL
91.2 degree Incl @ 180.4 degree AZM



ENSIGN
Directional

SRC Gies Pad Sec.15-T7N-R65W
SRC Gies T-15-22CHZ
Wellbore #1
9:57, November 12 2014

ANNOTATIONS

No annotation data is available.

LEGEND

- SRC Gies T-15-22CHZ, Wellbore #1, Plan #2 (10-24-14)R V0
- Wellbore #1
- Survey #1



Synergy Resources

SEC.15-T7N-R65W

SRC Gies Pad Sec.15-T7N-R65W

SRC Gies T-15-22CHZ

Wellbore #1

Survey: Survey #1

Standard Survey Report

12 November, 2014

Company:	Synergy Resources	Local Co-ordinate Reference:	Well SRC Gies T-15-22CHZ
Project:	SEC.15-T7N-R65W	TVD Reference:	WELL @ 4852.0ft (Ensign Rig #134 - RKB - 14')
Site:	SRC Gies Pad Sec.15-T7N-R65W	MD Reference:	WELL @ 4852.0ft (Ensign Rig #134 - RKB - 14')
Well:	SRC Gies T-15-22CHZ	North Reference:	True
Wellbore:	Wellbore #1	Survey Calculation Method:	Minimum Curvature
Design:	Wellbore #1	Database:	Landmark

Survey										
Measured Depth (ft)	Inclination (°)	Azimuth (°)	Vertical Depth (ft)	+N/-S (ft)	+E/-W (ft)	Vertical Section (ft)	Dogleg Rate (°/100ft)	Build Rate (°/100ft)	Turn Rate (°/100ft)	
1,206.0	8.00	263.90	1,202.9	1.8	-43.4	3.4	0.44	0.11	-3.12	
1,298.0	7.90	272.40	1,294.0	1.4	-56.1	5.3	1.28	-0.11	9.24	
1,391.0	7.30	272.00	1,386.2	1.9	-68.4	6.3	0.65	-0.65	-0.43	
1,484.0	8.40	271.20	1,478.3	2.3	-81.1	7.5	1.19	1.18	-0.86	
1,576.0	7.90	271.20	1,569.4	2.5	-94.1	8.8	0.54	-0.54	0.00	
1,669.0	7.70	269.00	1,661.5	2.6	-106.7	10.3	0.39	-0.22	-2.37	
1,761.0	7.00	268.20	1,752.8	2.3	-118.5	12.0	0.77	-0.76	-0.87	
1,854.0	7.50	264.80	1,845.0	1.5	-130.2	14.1	0.71	0.54	-3.66	
1,946.0	7.10	268.50	1,936.3	0.8	-141.9	16.2	0.67	-0.43	4.02	
2,039.0	6.90	269.20	2,028.6	0.6	-153.2	17.8	0.23	-0.22	0.75	
2,132.0	6.60	272.70	2,120.9	0.8	-164.1	18.9	0.55	-0.32	3.76	
2,224.0	6.50	265.50	2,212.3	0.6	-174.6	20.3	0.90	-0.11	-7.83	
2,317.0	6.60	260.60	2,304.7	-0.7	-185.1	22.9	0.61	0.11	-5.27	
2,410.0	5.30	269.60	2,397.2	-1.6	-194.7	24.9	1.72	-1.40	9.68	
2,502.0	6.50	266.80	2,488.7	-1.9	-204.1	26.4	1.34	1.30	-3.04	
2,595.0	6.40	270.40	2,581.2	-2.1	-214.6	27.9	0.45	-0.11	3.87	
2,687.0	7.70	268.90	2,672.5	-2.2	-225.9	29.3	1.43	1.41	-1.63	
2,780.0	7.10	267.80	2,764.7	-2.6	-237.8	31.1	0.66	-0.65	-1.18	
2,876.0	6.50	264.80	2,860.0	-3.3	-249.2	33.2	0.73	-0.63	-3.13	
2,973.0	5.90	279.20	2,956.4	-3.0	-259.6	34.1	1.71	-0.62	14.85	
3,068.0	7.10	274.30	3,050.8	-1.8	-270.2	34.2	1.39	1.26	-5.16	
3,163.0	6.00	271.30	3,145.2	-1.2	-281.1	34.9	1.21	-1.16	-3.16	
3,259.0	6.90	263.10	3,240.6	-1.8	-291.8	36.8	1.34	0.94	-8.54	
3,354.0	7.70	261.30	3,334.8	-3.4	-303.8	39.9	0.88	0.84	-1.89	
3,449.0	6.90	269.70	3,429.1	-4.4	-315.8	42.3	1.40	-0.84	8.84	
3,544.0	6.50	275.00	3,523.4	-4.0	-326.8	43.2	0.77	-0.42	5.58	
3,640.0	5.50	269.40	3,618.9	-3.6	-336.8	44.0	1.21	-1.04	-5.83	
3,735.0	4.90	274.30	3,713.5	-3.3	-345.4	44.8	0.79	-0.63	5.16	
3,830.0	4.90	277.30	3,808.2	-2.5	-353.5	44.9	0.27	0.00	3.16	
3,925.0	6.70	285.20	3,902.7	-0.5	-362.9	44.1	2.07	1.89	8.32	
4,020.0	6.80	281.50	3,997.0	2.1	-373.7	42.8	0.47	0.11	-3.89	
4,116.0	7.20	279.40	4,092.3	4.2	-385.2	42.1	0.49	0.42	-2.19	
4,211.0	7.30	269.90	4,186.5	5.1	-397.2	42.6	1.26	0.11	-10.00	
4,306.0	7.10	265.00	4,280.8	4.6	-409.0	44.5	0.68	-0.21	-5.16	
4,401.0	7.30	253.40	4,375.0	2.4	-420.7	48.2	1.54	0.21	-12.21	
4,497.0	7.20	261.10	4,470.3	-0.3	-432.5	52.2	1.02	-0.10	8.02	
4,592.0	7.20	269.20	4,564.5	-1.3	-444.3	54.6	1.07	0.00	8.53	
4,687.0	7.00	265.70	4,658.8	-1.8	-456.0	56.6	0.50	-0.21	-3.68	
4,782.0	7.40	272.20	4,753.1	-2.0	-467.9	58.2	0.95	0.42	6.84	
4,878.0	6.70	271.20	4,848.3	-1.7	-479.7	59.3	0.74	-0.73	-1.04	
4,973.0	6.90	271.70	4,942.7	-1.4	-490.9	60.3	0.22	0.21	0.53	
5,068.0	6.60	269.40	5,037.0	-1.3	-502.1	61.5	0.43	-0.32	-2.42	
5,163.0	6.90	269.70	5,131.3	-1.4	-513.3	63.0	0.32	0.32	0.32	
5,259.0	7.00	262.00	5,226.6	-2.2	-524.8	65.2	0.98	0.10	-8.02	
5,354.0	5.50	270.30	5,321.1	-3.0	-535.1	67.2	1.84	-1.58	8.74	
5,449.0	5.10	271.30	5,415.7	-2.9	-543.9	68.1	0.43	-0.42	1.05	
5,544.0	4.00	277.10	5,510.4	-2.4	-551.4	68.5	1.25	-1.16	6.11	
5,640.0	2.30	271.90	5,606.2	-1.9	-556.6	68.7	1.79	-1.77	-5.42	
5,731.0	0.10	113.10	5,697.2	-1.8	-558.4	68.9	2.63	-2.42	-174.51	
5,826.0	0.30	215.30	5,792.2	-2.1	-558.5	69.1	0.35	0.21	107.58	
5,922.0	0.30	292.20	5,888.2	-2.2	-558.8	69.3	0.39	0.00	80.10	
6,017.0	0.60	10.50	5,983.2	-1.6	-559.0	68.7	0.65	0.32	82.42	
6,112.0	0.60	13.10	6,078.2	-0.6	-558.8	67.7	0.03	0.00	2.74	
6,207.0	0.40	18.60	6,173.2	0.2	-558.5	66.9	0.22	-0.21	5.79	

Company:	Synergy Resources	Local Co-ordinate Reference:	Well SRC Gies T-15-22CHZ
Project:	SEC.15-T7N-R65W	TVD Reference:	WELL @ 4852.0ft (Ensign Rig #134 - RKB - 14')
Site:	SRC Gies Pad Sec.15-T7N-R65W	MD Reference:	WELL @ 4852.0ft (Ensign Rig #134 - RKB - 14')
Well:	SRC Gies T-15-22CHZ	North Reference:	True
Wellbore:	Wellbore #1	Survey Calculation Method:	Minimum Curvature
Design:	Wellbore #1	Database:	Landmark

Survey										
Measured Depth (ft)	Inclination (°)	Azimuth (°)	Vertical Depth (ft)	+N/-S (ft)	+E/-W (ft)	Vertical Section (ft)	Dogleg Rate (°/100ft)	Build Rate (°/100ft)	Turn Rate (°/100ft)	
6,303.0	0.40	3.60	6,269.2	0.8	-558.4	66.2	0.11	0.00	-15.63	
6,351.0	0.30	326.50	6,317.2	1.1	-558.5	66.0	0.50	-0.21	-77.29	
6,398.0	0.50	168.10	6,364.2	1.0	-558.5	66.1	1.67	0.43	-337.02	
6,445.0	4.80	184.50	6,411.1	-1.2	-558.6	68.2	9.20	9.15	34.89	
6,493.0	8.30	182.00	6,458.8	-6.6	-558.9	73.7	7.31	7.29	-5.21	
6,540.0	10.60	179.20	6,505.2	-14.4	-559.0	81.4	4.99	4.89	-5.96	
6,589.0	13.00	176.20	6,553.1	-24.4	-558.5	91.3	5.05	4.90	-6.12	
6,636.0	16.40	175.90	6,598.6	-36.3	-557.7	103.0	7.24	7.23	-0.64	
6,684.0	18.40	176.10	6,644.4	-50.6	-556.7	117.1	4.17	4.17	0.42	
6,731.0	20.80	177.50	6,688.7	-66.3	-555.8	132.6	5.20	5.11	2.98	
6,779.0	22.30	182.60	6,733.3	-83.9	-555.9	150.1	5.00	3.13	10.63	
6,826.0	24.20	182.70	6,776.5	-102.5	-556.7	168.6	4.04	4.04	0.21	
6,874.0	28.10	183.10	6,819.6	-123.6	-557.8	189.7	8.13	8.13	0.83	
6,921.0	32.10	183.10	6,860.2	-147.1	-559.1	213.2	8.51	8.51	0.00	
6,970.0	36.40	182.00	6,900.7	-174.7	-560.3	240.7	8.87	8.78	-2.24	
7,017.0	41.40	180.10	6,937.3	-204.2	-560.8	270.0	10.94	10.64	-4.04	
7,065.0	45.70	179.20	6,972.1	-237.2	-560.6	302.8	9.05	8.96	-1.88	
7,112.0	49.20	179.90	7,003.8	-271.8	-560.3	337.2	7.53	7.45	1.49	
7,160.0	52.90	179.40	7,034.0	-309.2	-560.1	374.2	7.75	7.71	-1.04	
7,207.0	55.80	179.70	7,061.4	-347.3	-559.8	412.1	6.19	6.17	0.64	
7,256.0	58.80	179.70	7,087.9	-388.6	-559.6	453.0	6.12	6.12	0.00	
7,303.0	61.90	180.30	7,111.1	-429.4	-559.6	493.5	6.69	6.60	1.28	
7,351.0	64.70	181.30	7,132.7	-472.3	-560.2	536.1	6.12	5.83	2.08	
7,398.0	68.20	180.80	7,151.5	-515.4	-561.0	579.0	7.51	7.45	-1.06	
7,446.0	72.10	180.60	7,167.7	-560.5	-561.5	623.9	8.13	8.13	-0.42	
7,493.0	76.20	179.70	7,180.6	-605.7	-561.6	668.8	8.92	8.72	-1.91	
7,541.0	80.10	178.90	7,190.4	-652.7	-561.1	715.3	8.29	8.13	-1.67	
7,588.0	82.80	179.40	7,197.4	-699.1	-560.4	761.4	5.84	5.74	1.06	
7,604.4	84.44	179.26	7,199.2	-715.4	-560.2	777.5	10.03	10.00	-0.83	
Landing Pt. 460'FNL & 1661'FEL, Sec.22										
7,612.0	85.20	179.20	7,199.9	-723.0	-560.1	785.0	10.03	10.00	-0.83	
7,652.0	87.53	179.74	7,202.5	-762.9	-559.7	824.6	5.97	5.82	1.35	
7"										
7,679.0	89.10	180.10	7,203.3	-789.9	-559.7	851.4	5.97	5.82	1.34	
7,711.0	89.30	179.70	7,203.7	-821.9	-559.6	883.1	1.40	0.63	-1.25	
7,743.0	89.60	179.60	7,204.0	-853.9	-559.4	914.9	0.99	0.94	-0.31	
7,775.0	89.30	179.60	7,204.3	-885.9	-559.2	946.6	0.94	-0.94	0.00	
7,822.0	87.20	178.90	7,205.8	-932.9	-558.6	993.2	4.71	-4.47	-1.49	
7,870.0	86.70	179.00	7,208.3	-980.8	-557.7	1,040.7	1.06	-1.04	0.21	
7,917.0	88.40	178.90	7,210.3	-1,027.7	-556.9	1,087.2	3.62	3.62	-0.21	
7,965.0	89.30	179.40	7,211.3	-1,075.7	-556.1	1,134.7	2.14	1.88	1.04	
8,012.0	89.80	179.60	7,211.7	-1,122.7	-555.7	1,181.3	1.15	1.06	0.43	
8,060.0	90.70	180.40	7,211.4	-1,170.7	-555.7	1,229.0	2.51	1.88	1.67	
8,107.0	92.00	179.90	7,210.3	-1,217.7	-555.9	1,275.6	2.96	2.77	-1.06	
8,156.0	91.60	179.60	7,208.8	-1,266.7	-555.6	1,324.2	1.02	-0.82	-0.61	
8,203.0	92.20	179.70	7,207.2	-1,313.6	-555.4	1,370.8	1.29	1.28	0.21	
8,251.0	92.40	179.90	7,205.3	-1,361.6	-555.2	1,418.4	0.59	0.42	0.42	
8,298.0	90.90	179.90	7,204.0	-1,408.6	-555.1	1,465.1	3.19	-3.19	0.00	
8,346.0	90.20	179.60	7,203.5	-1,456.6	-554.9	1,512.7	1.59	-1.46	-0.63	
8,393.0	90.30	178.70	7,203.3	-1,503.6	-554.2	1,559.2	1.93	0.21	-1.91	
8,442.0	90.70	178.50	7,202.9	-1,552.6	-553.0	1,607.7	0.91	0.82	-0.41	
8,489.0	90.30	178.00	7,202.5	-1,599.5	-551.6	1,654.2	1.36	-0.85	-1.06	
8,537.0	89.30	177.60	7,202.6	-1,647.5	-549.7	1,701.6	2.24	-2.08	-0.83	
8,554.3	89.30	177.42	7,202.8	-1,664.8	-549.0	1,718.7	1.06	0.00	-1.06	

Company:	Synergy Resources	Local Co-ordinate Reference:	Well SRC Gies T-15-22CHZ
Project:	SEC.15-T7N-R65W	TVD Reference:	WELL @ 4852.0ft (Ensign Rig #134 - RKB - 14')
Site:	SRC Gies Pad Sec.15-T7N-R65W	MD Reference:	WELL @ 4852.0ft (Ensign Rig #134 - RKB - 14')
Well:	SRC Gies T-15-22CHZ	North Reference:	True
Wellbore:	Wellbore #1	Survey Calculation Method:	Minimum Curvature
Design:	Wellbore #1	Database:	Landmark

Survey									
Measured Depth (ft)	Inclination (°)	Azimuth (°)	Vertical Depth (ft)	+N/-S (ft)	+E/-W (ft)	Vertical Section (ft)	Dogleg Rate (°/100ft)	Build Rate (°/100ft)	Turn Rate (°/100ft)
WP #1 (T-15-22CHZ)									
8,584.0	89.30	177.10	7,203.2	-1,694.4	-547.5	1,747.9	1.06	0.00	-1.06
8,632.0	89.10	177.10	7,203.9	-1,742.4	-545.1	1,795.2	0.42	-0.42	0.00
8,679.0	89.60	177.80	7,204.4	-1,789.3	-543.0	1,841.6	1.83	1.06	1.49
8,727.0	89.40	176.90	7,204.8	-1,837.3	-540.8	1,888.9	1.92	-0.42	-1.88
8,774.0	89.60	178.00	7,205.2	-1,884.2	-538.7	1,935.3	2.38	0.43	2.34
8,823.0	89.20	178.20	7,205.7	-1,933.2	-537.1	1,983.7	0.91	-0.82	0.41
8,870.0	89.20	179.20	7,206.4	-1,980.2	-536.0	2,030.2	2.13	0.00	2.13
8,918.0	89.40	180.30	7,207.0	-2,028.2	-535.8	2,077.8	2.33	0.42	2.29
8,965.0	91.20	180.60	7,206.7	-2,075.2	-536.2	2,124.5	3.88	3.83	0.64
9,013.0	91.90	181.20	7,205.4	-2,123.1	-536.9	2,172.3	1.92	1.46	1.25
9,060.0	92.00	182.90	7,203.8	-2,170.1	-538.6	2,219.1	3.62	0.21	3.62
9,108.0	92.50	183.10	7,202.0	-2,218.0	-541.1	2,266.9	1.12	1.04	0.42
9,155.0	93.50	183.80	7,199.5	-2,264.8	-544.0	2,313.8	2.60	2.13	1.49
9,203.0	93.60	183.30	7,196.5	-2,312.6	-546.9	2,361.6	1.06	0.21	-1.04
9,250.0	93.00	182.00	7,193.8	-2,359.5	-549.1	2,408.4	3.04	-1.28	-2.77
9,299.0	91.90	181.30	7,191.7	-2,408.5	-550.5	2,457.1	2.66	-2.24	-1.43
9,346.0	91.80	181.00	7,190.2	-2,455.4	-551.4	2,503.9	0.67	-0.21	-0.64
9,394.0	90.20	181.70	7,189.4	-2,503.4	-552.6	2,551.6	3.64	-3.33	1.46
9,441.0	90.40	181.20	7,189.1	-2,550.4	-553.8	2,598.4	1.15	0.43	-1.06
9,455.7	90.28	181.23	7,189.0	-2,565.1	-554.1	2,613.0	0.86	-0.83	0.21
WP #2 (T-15-22CHZ)									
9,489.0	90.00	181.30	7,189.0	-2,598.4	-554.8	2,646.2	0.86	-0.83	0.21
9,585.0	89.90	181.90	7,189.0	-2,694.3	-557.5	2,741.8	0.63	-0.10	0.63
9,680.0	90.00	180.10	7,189.1	-2,789.3	-559.1	2,836.3	1.90	0.11	-1.89
9,775.0	90.50	180.10	7,188.7	-2,884.3	-559.3	2,930.6	0.53	0.53	0.00
9,871.0	90.40	179.40	7,188.0	-2,980.3	-558.9	3,025.9	0.74	-0.10	-0.73
9,966.0	89.50	178.50	7,188.0	-3,075.3	-557.2	3,119.9	1.34	-0.95	-0.95
10,061.0	88.90	178.30	7,189.4	-3,170.2	-554.5	3,213.9	0.67	-0.63	-0.21
10,156.0	90.00	177.80	7,190.3	-3,265.2	-551.3	3,307.8	1.27	1.16	-0.53
10,252.0	90.00	179.00	7,190.3	-3,361.1	-548.6	3,402.7	1.25	0.00	1.25
10,347.0	89.90	178.90	7,190.4	-3,456.1	-546.8	3,496.8	0.15	-0.11	-0.11
10,442.0	90.80	179.00	7,189.8	-3,551.1	-545.1	3,590.9	0.95	0.95	0.11
10,537.0	90.90	180.40	7,188.4	-3,646.1	-544.6	3,685.1	1.48	0.11	1.47
10,633.0	90.30	181.20	7,187.4	-3,742.1	-546.0	3,780.6	1.04	-0.63	0.83
10,728.0	90.00	180.40	7,187.1	-3,837.1	-547.3	3,875.0	0.90	-0.32	-0.84
10,823.0	89.90	180.30	7,187.2	-3,932.1	-547.9	3,969.4	0.15	-0.11	-0.11
10,918.0	89.80	179.70	7,187.4	-4,027.1	-547.9	4,063.7	0.64	-0.11	-0.63
11,014.0	90.10	180.80	7,187.5	-4,123.1	-548.3	4,159.1	1.19	0.31	1.15
11,109.0	90.40	181.00	7,187.1	-4,218.0	-549.8	4,253.5	0.38	0.32	0.21
11,204.0	90.70	180.40	7,186.2	-4,313.0	-550.9	4,348.0	0.71	0.32	-0.63
11,299.0	91.10	181.00	7,184.7	-4,408.0	-552.1	4,442.4	0.76	0.42	0.63
11,345.0	91.20	180.40	7,183.8	-4,454.0	-552.7	4,488.1	1.32	0.22	-1.30
11,397.0	91.20	180.40	7,182.7	-4,506.0	-553.0	4,539.8	0.00	0.00	0.00
BHL 470'FSL & 1644'FEL, Sec.22									

Casing Points				
Measured Depth (ft)	Vertical Depth (ft)	Name	Casing Diameter (")	Hole Diameter (")
7,652.0	7,202.5	7"	7	7-1/2

Company:	Synergy Resources	Local Co-ordinate Reference:	Well SRC Gies T-15-22CHZ
Project:	SEC.15-T7N-R65W	TVD Reference:	WELL @ 4852.0ft (Ensign Rig #134 - RKB - 14')
Site:	SRC Gies Pad Sec.15-T7N-R65W	MD Reference:	WELL @ 4852.0ft (Ensign Rig #134 - RKB - 14')
Well:	SRC Gies T-15-22CHZ	North Reference:	True
Wellbore:	Wellbore #1	Survey Calculation Method:	Minimum Curvature
Design:	Wellbore #1	Database:	Landmark

Checked By: _____	Approved By: _____	Date: _____
-------------------	--------------------	-------------