

Synergy Resources

Well Name: **SRC Gies T-15-22NHZ**

Surface Location: SRC Gies Pad Sec.15-T7N-R65W

North American Datum 1983 , US State Plane 1983 , Colorado Northern Zone

Ground Elevation: 4838.0

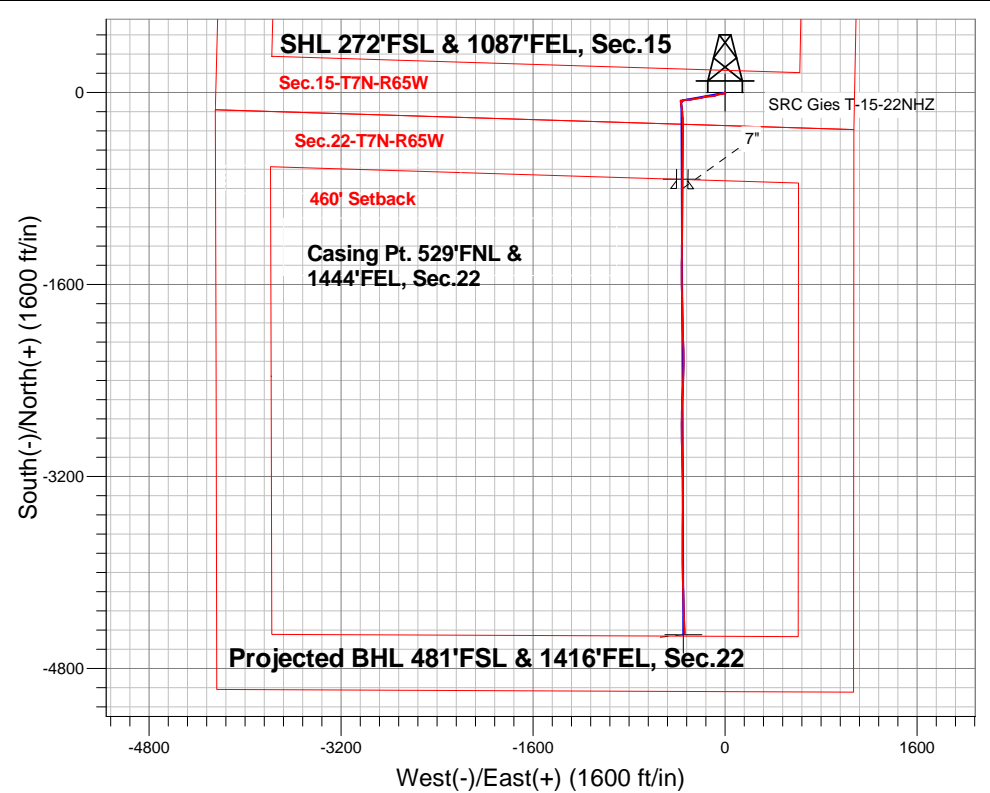
+N/-S	+E/-W	Northing	Easting	Latitude	Longitude	Slot
0.0	0.0	1450672.99	3237918.80	40.567343	-104.643618	

Original Well Elev WELL @ 4851.0ft (Original Well Elev)

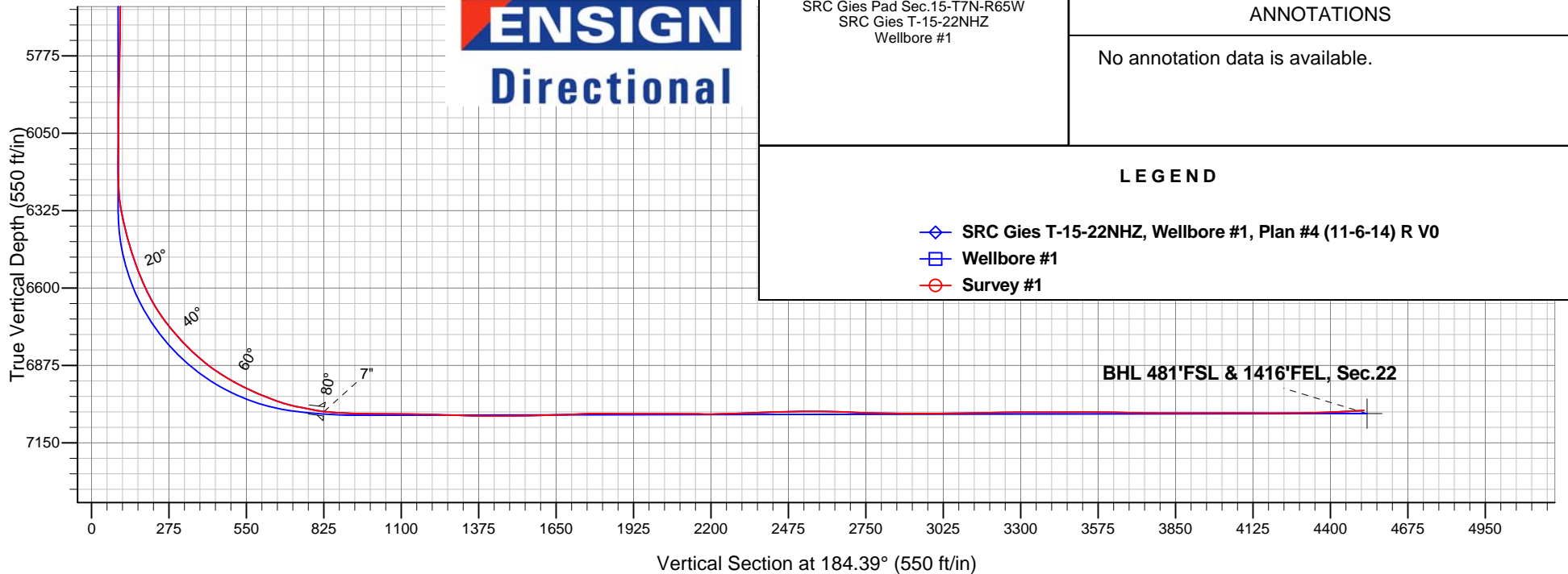
FINAL SURVEY

Projected Bottom Hole Location

11149'MD 7035'TVD 4506'S & 338'W of SHL
93.1 degree Incl @ 178.5 degree AZM



ENSIGN
Directional



SRC Gies Pad Sec.15-T7N-R65W
SRC Gies T-15-22NHZ
Wellbore #1

ANNOTATIONS

No annotation data is available.

LEGEND

- ◆ SRC Gies T-15-22NHZ, Wellbore #1, Plan #4 (11-6-14) R V0
- Wellbore #1
- Survey #1



Synergy Resources

SEC.15-T7N-R65W

SRC Gies Pad Sec.15-T7N-R65W

SRC Gies T-15-22NHZ

Wellbore #1

Survey: Survey #1

Standard Survey Report

21 November, 2014

Company:	Synergy Resources	Local Co-ordinate Reference:	Well SRC Gies T-15-22NHZ
Project:	SEC.15-T7N-R65W	TVD Reference:	WELL @ 4851.0ft (Original Well Elev)
Site:	SRC Gies Pad Sec.15-T7N-R65W	MD Reference:	WELL @ 4851.0ft (Original Well Elev)
Well:	SRC Gies T-15-22NHZ	North Reference:	True
Wellbore:	Wellbore #1	Survey Calculation Method:	Minimum Curvature
Design:	Wellbore #1	Database:	Landmark

Project	SEC.15-T7N-R65W, Weld County, CO		
Map System:	US State Plane 1983	System Datum:	Mean Sea Level
Geo Datum:	North American Datum 1983		Using Well Reference Point
Map Zone:	Colorado Northern Zone		Using geodetic scale factor

Site	SRC Gies Pad Sec.15-T7N-R65W		
Site Position:		Northing:	1,450,674.24 ft
From:	Lat/Long	Easting:	3,237,858.77 ft
Position Uncertainty:	0.0 ft	Slot Radius:	"
		Latitude:	40.567348
		Longitude:	-104.643834
		Grid Convergence:	0.55 °

Well	SRC Gies T-15-22NHZ		
Well Position	+N/-S	0.0 ft	Northing:
	+E/-W	0.0 ft	Easting:
Position Uncertainty	0.0 ft	Wellhead Elevation:	ft
		Latitude:	40.567343
		Longitude:	-104.643618
		Ground Level:	4,838.0 ft

Wellbore	Wellbore #1				
Magnetics	Model Name	Sample Date	Declination (°)	Dip Angle (°)	Field Strength (nT)
	IGRF2010	11/7/2014	8.35	67.09	52,873

Design	Wellbore #1				
Audit Notes:					
Version:	1.0	Phase:	ACTUAL	Tie On Depth:	0.0
Vertical Section:	Depth From (TVD) (ft)	+N/-S (ft)	+E/-W (ft)	Direction (°)	
	0.0	0.0	0.0	184.39	

Survey Program	Date	11/21/2014			
From (ft)	To (ft)	Survey (Wellbore)	Tool Name	Description	
74.0	11,149.0	Survey #1 (Wellbore #1)	MWD	MWD - Standard	

Survey										
Measured Depth (ft)	Inclination (°)	Azimuth (°)	Vertical Depth (ft)	+N/-S (ft)	+E/-W (ft)	Vertical Section (ft)	Dogleg Rate (°/100ft)	Build Rate (°/100ft)	Turn Rate (°/100ft)	
0.0	0.00	0.00	0.0	0.0	0.0	0.0	0.00	0.00	0.00	
1.0	0.00	212.80	1.0	0.0	0.0	0.0	0.27	0.27	0.00	
SHL 272'FSL & 1087'FEL, Sec.15										
74.0	0.20	212.80	74.0	-0.1	-0.1	0.1	0.27	0.27	0.00	
167.0	0.30	231.30	167.0	-0.4	-0.3	0.4	0.14	0.11	19.89	
259.0	0.50	217.90	259.0	-0.9	-0.8	0.9	0.24	0.22	-14.57	
352.0	0.60	140.20	352.0	-1.6	-0.7	1.6	0.75	0.11	-83.55	
444.0	0.50	153.60	444.0	-2.3	-0.2	2.3	0.18	-0.11	14.57	
536.0	0.60	140.00	536.0	-3.0	0.3	3.0	0.18	0.11	-14.78	
625.0	0.50	121.90	625.0	-3.6	0.9	3.5	0.22	-0.11	-20.34	
726.0	0.40	169.40	726.0	-4.2	1.3	4.0	0.37	-0.10	47.03	
819.0	0.40	168.80	819.0	-4.8	1.4	4.7	0.00	0.00	-0.65	
911.0	0.90	164.10	911.0	-5.8	1.7	5.7	0.55	0.54	-5.11	

Company:	Synergy Resources	Local Co-ordinate Reference:	Well SRC Gies T-15-22NHZ
Project:	SEC.15-T7N-R65W	TVD Reference:	WELL @ 4851.0ft (Original Well Elev)
Site:	SRC Gies Pad Sec.15-T7N-R65W	MD Reference:	WELL @ 4851.0ft (Original Well Elev)
Well:	SRC Gies T-15-22NHZ	North Reference:	True
Wellbore:	Wellbore #1	Survey Calculation Method:	Minimum Curvature
Design:	Wellbore #1	Database:	Landmark

Survey										
Measured Depth (ft)	Inclination (°)	Azimuth (°)	Vertical Depth (ft)	+N/-S (ft)	+E/-W (ft)	Vertical Section (ft)	Dogleg Rate (°/100ft)	Build Rate (°/100ft)	Turn Rate (°/100ft)	
1,003.0	1.80	178.00	1,002.9	-7.9	2.0	7.8	1.03	0.98	15.11	
1,110.0	2.50	292.80	1,109.9	-8.7	-0.1	8.7	3.40	0.65	107.29	
1,202.0	2.50	308.40	1,201.8	-6.7	-3.6	6.9	0.74	0.00	16.96	
1,295.0	3.60	271.50	1,294.7	-5.4	-8.1	6.0	2.36	1.18	-39.68	
1,388.0	4.30	240.40	1,387.5	-7.0	-14.0	8.1	2.39	0.75	-33.44	
1,480.0	6.90	252.90	1,479.0	-10.3	-22.3	12.0	3.11	2.83	13.59	
1,573.0	5.50	269.40	1,571.5	-12.0	-32.1	14.4	2.42	-1.51	17.74	
1,665.0	5.30	260.60	1,663.1	-12.8	-40.7	15.8	0.93	-0.22	-9.57	
1,758.0	5.30	259.20	1,755.7	-14.3	-49.2	18.0	0.14	0.00	-1.51	
1,850.0	4.70	257.80	1,847.3	-15.9	-57.0	20.2	0.67	-0.65	-1.52	
1,943.0	4.60	249.50	1,940.0	-18.0	-64.2	22.8	0.73	-0.11	-8.92	
2,036.0	4.50	248.80	2,032.7	-20.6	-71.1	26.0	0.12	-0.11	-0.75	
2,128.0	5.50	253.60	2,124.4	-23.2	-78.7	29.1	1.18	1.09	5.22	
2,221.0	5.50	253.90	2,217.0	-25.6	-87.3	32.2	0.03	0.00	0.32	
2,314.0	5.80	262.40	2,309.5	-27.5	-96.2	34.8	0.95	0.32	9.14	
2,406.0	5.60	262.20	2,401.1	-28.7	-105.3	36.7	0.22	-0.22	-0.22	
2,498.0	6.70	265.00	2,492.5	-29.8	-115.1	38.5	1.24	1.20	3.04	
2,591.0	6.30	266.40	2,584.9	-30.6	-125.6	40.1	0.46	-0.43	1.51	
2,684.0	6.20	267.50	2,677.4	-31.1	-135.7	41.4	0.17	-0.11	1.18	
2,779.0	5.70	265.20	2,771.9	-31.8	-145.5	42.8	0.58	-0.53	-2.42	
2,874.0	7.40	260.80	2,866.2	-33.1	-156.2	45.0	1.86	1.79	-4.63	
2,969.0	6.80	259.00	2,960.5	-35.2	-167.8	47.9	0.67	-0.63	-1.89	
3,064.0	6.70	256.20	3,054.9	-37.6	-178.7	51.1	0.36	-0.11	-2.95	
3,160.0	6.60	253.90	3,150.2	-40.4	-189.4	54.8	0.30	-0.10	-2.40	
3,255.0	7.20	264.80	3,244.5	-42.5	-200.6	57.7	1.51	0.63	11.47	
3,350.0	7.10	260.90	3,338.8	-44.0	-212.3	60.1	0.52	-0.11	-4.11	
3,446.0	6.30	259.20	3,434.1	-45.9	-223.4	62.8	0.86	-0.83	-1.77	
3,541.0	5.50	254.40	3,528.6	-48.1	-232.9	65.8	0.99	-0.84	-5.05	
3,636.0	5.50	264.80	3,623.2	-49.7	-241.8	68.1	1.05	0.00	10.95	
3,732.0	5.20	258.80	3,718.8	-51.0	-250.7	70.0	0.66	-0.31	-6.25	
3,827.0	6.80	260.10	3,813.3	-52.8	-260.4	72.6	1.69	1.68	1.37	
3,922.0	6.60	259.20	3,907.6	-54.8	-271.3	75.4	0.24	-0.21	-0.95	
4,017.0	7.20	255.30	4,001.9	-57.3	-282.4	78.8	0.80	0.63	-4.11	
4,112.0	7.20	271.10	4,096.2	-58.7	-294.2	81.0	2.08	0.00	16.63	
4,207.0	7.40	268.20	4,190.4	-58.8	-306.2	82.0	0.44	0.21	-3.05	
4,303.0	7.10	264.30	4,285.6	-59.6	-318.3	83.7	0.60	-0.31	-4.06	
4,396.0	7.20	260.80	4,377.9	-61.1	-329.8	86.1	0.48	0.11	-3.76	
4,493.0	6.20	255.30	4,474.3	-63.4	-340.8	89.3	1.22	-1.03	-5.67	
4,588.0	6.00	247.10	4,568.7	-66.6	-350.4	93.2	0.94	-0.21	-8.63	
4,684.0	4.00	234.60	4,664.4	-70.5	-357.7	97.7	2.36	-2.08	-13.02	
4,779.0	2.30	218.80	4,759.2	-73.9	-361.6	101.4	1.99	-1.79	-16.63	
4,874.0	1.50	169.00	4,854.2	-76.6	-362.6	104.1	1.85	-0.84	-52.42	
4,969.0	0.50	73.20	4,949.1	-77.7	-361.9	105.2	1.71	-1.05	-100.84	
5,065.0	0.10	282.60	5,045.1	-77.6	-361.6	105.0	0.61	-0.42	-156.88	
5,160.0	0.00	96.20	5,140.1	-77.6	-361.7	105.0	0.11	-0.11	0.00	
5,255.0	0.50	324.80	5,235.1	-77.2	-362.0	104.7	0.53	0.53	0.00	
5,350.0	0.40	306.70	5,330.1	-76.7	-362.5	104.2	0.18	-0.11	-19.05	
5,446.0	1.20	305.90	5,426.1	-75.9	-363.5	103.5	0.83	0.83	-0.83	
5,541.0	0.80	315.10	5,521.1	-74.8	-364.8	102.5	0.45	-0.42	9.68	
5,636.0	0.50	343.00	5,616.1	-74.0	-365.4	101.7	0.45	-0.32	29.37	
5,731.0	1.00	5.20	5,711.1	-72.8	-365.4	100.5	0.60	0.53	23.37	
5,827.0	1.00	2.00	5,807.1	-71.1	-365.3	98.8	0.06	0.00	-3.33	
5,922.0	1.30	346.00	5,902.1	-69.2	-365.6	97.0	0.46	0.32	-16.84	
6,017.0	1.30	306.10	5,997.0	-67.5	-366.7	95.4	0.93	0.00	-42.00	

Company:	Synergy Resources	Local Co-ordinate Reference:	Well SRC Gies T-15-22NHZ
Project:	SEC.15-T7N-R65W	TVD Reference:	WELL @ 4851.0ft (Original Well Elev)
Site:	SRC Gies Pad Sec.15-T7N-R65W	MD Reference:	WELL @ 4851.0ft (Original Well Elev)
Well:	SRC Gies T-15-22NHZ	North Reference:	True
Wellbore:	Wellbore #1	Survey Calculation Method:	Minimum Curvature
Design:	Wellbore #1	Database:	Landmark

Survey										
Measured Depth (ft)	Inclination (°)	Azimuth (°)	Vertical Depth (ft)	+N/-S (ft)	+E/-W (ft)	Vertical Section (ft)	Dogleg Rate (°/100ft)	Build Rate (°/100ft)	Turn Rate (°/100ft)	
6,113.0	0.40	253.40	6,093.0	-67.0	-367.9	94.9	1.15	-0.94	-54.90	
6,208.0	0.70	265.50	6,188.0	-67.1	-368.8	95.1	0.34	0.32	12.74	
6,255.0	1.40	205.00	6,235.0	-67.7	-369.3	95.7	2.59	1.49	-128.72	
6,303.0	6.20	182.50	6,282.9	-70.8	-369.7	98.9	10.28	10.00	-46.88	
6,350.0	11.30	173.10	6,329.3	-77.9	-369.2	105.9	11.23	10.85	-20.00	
6,398.0	13.60	166.90	6,376.2	-88.1	-367.4	115.9	5.54	4.79	-12.92	
6,445.0	15.80	169.00	6,421.7	-99.7	-364.9	127.4	4.82	4.68	4.47	
6,494.0	17.40	171.30	6,468.6	-113.5	-362.6	140.9	3.53	3.27	4.69	
6,541.0	20.10	172.20	6,513.1	-128.5	-360.4	155.7	5.78	5.74	1.91	
6,589.0	22.70	174.30	6,557.8	-145.9	-358.4	172.8	5.65	5.42	4.38	
6,636.0	24.90	176.20	6,600.8	-164.8	-356.8	191.6	4.96	4.68	4.04	
6,684.0	28.70	175.70	6,643.7	-186.3	-355.3	213.0	7.93	7.92	-1.04	
6,731.0	33.70	178.00	6,683.8	-210.6	-354.0	237.1	10.93	10.64	4.89	
6,779.0	37.50	178.20	6,722.9	-238.6	-353.0	264.9	7.92	7.92	0.42	
6,826.0	40.60	179.20	6,759.4	-268.2	-352.4	294.3	6.73	6.60	2.13	
6,875.0	43.70	180.10	6,795.7	-301.0	-352.2	327.1	6.45	6.33	1.84	
6,922.0	47.00	182.20	6,828.7	-334.5	-352.9	360.5	7.71	7.02	4.47	
6,970.0	50.60	181.30	6,860.3	-370.6	-354.0	396.5	7.63	7.50	-1.88	
7,017.0	55.00	179.20	6,888.7	-408.0	-354.1	433.9	10.01	9.36	-4.47	
7,065.0	58.40	178.20	6,915.1	-448.1	-353.2	473.8	7.29	7.08	-2.08	
7,112.0	61.50	179.70	6,938.6	-488.7	-352.5	514.3	7.15	6.60	3.19	
7,161.0	65.30	180.30	6,960.6	-532.6	-352.5	558.0	7.83	7.76	1.22	
7,208.0	67.80	181.00	6,979.3	-575.7	-352.9	601.0	5.49	5.32	1.49	
7,256.0	68.10	181.00	6,997.3	-620.1	-353.7	645.4	0.63	0.63	0.00	
7,303.0	74.60	180.60	7,012.3	-664.7	-354.3	689.8	13.85	13.83	-0.85	
7,351.0	78.90	181.00	7,023.3	-711.4	-355.0	736.4	8.99	8.96	0.83	
7,362.8	78.97	181.02	7,025.6	-722.9	-355.2	748.0	0.61	0.58	0.19	
Casing Pt. 460'FNL & 1441'FEL, Sec.22										
7,403.0	79.20	181.10	7,033.2	-762.4	-355.9	787.4	0.61	0.58	0.19	
7,442.0	83.17	180.61	7,039.2	-800.9	-356.5	825.9	10.25	10.18	-1.26	
7"										
7,459.0	84.90	180.40	7,040.9	-817.8	-356.7	842.7	10.25	10.18	-1.24	
7,491.0	86.20	180.10	7,043.4	-849.7	-356.8	874.5	4.17	4.06	-0.94	
7,539.0	87.80	179.70	7,045.9	-897.7	-356.7	922.3	3.44	3.33	-0.83	
7,586.0	89.40	179.00	7,047.1	-944.7	-356.2	969.1	3.72	3.40	-1.49	
7,634.0	90.10	178.90	7,047.3	-992.6	-355.3	1,016.9	1.47	1.46	-0.21	
7,681.0	89.70	180.10	7,047.4	-1,039.6	-354.9	1,063.7	2.69	-0.85	2.55	
7,729.0	88.90	181.30	7,047.9	-1,087.6	-355.5	1,111.6	3.00	-1.67	2.50	
7,777.0	88.50	182.00	7,049.0	-1,135.6	-356.9	1,159.6	1.68	-0.83	1.46	
7,825.0	88.50	181.10	7,050.3	-1,183.6	-358.2	1,207.5	1.87	0.00	-1.88	
7,872.0	88.80	181.10	7,051.4	-1,230.5	-359.1	1,254.4	0.64	0.64	0.00	
7,920.0	88.50	180.40	7,052.5	-1,278.5	-359.7	1,302.3	1.59	-0.63	-1.46	
7,967.0	88.70	180.30	7,053.7	-1,325.5	-360.0	1,349.2	0.48	0.43	-0.21	
8,015.0	89.00	180.40	7,054.6	-1,373.5	-360.3	1,397.0	0.66	0.63	0.21	
8,062.0	90.60	181.00	7,054.8	-1,420.5	-360.8	1,443.9	3.64	3.40	1.28	
8,110.0	90.60	179.90	7,054.3	-1,468.5	-361.2	1,491.8	2.29	0.00	-2.29	
8,158.0	90.80	179.70	7,053.7	-1,516.5	-361.0	1,539.7	0.59	0.42	-0.42	
8,206.0	91.30	179.60	7,052.8	-1,564.5	-360.8	1,587.5	1.06	1.04	-0.21	
8,253.0	91.50	179.40	7,051.7	-1,611.5	-360.3	1,634.3	0.60	0.43	-0.43	
8,301.0	92.10	178.70	7,050.2	-1,659.4	-359.5	1,682.1	1.92	1.25	-1.46	
8,348.0	92.60	178.50	7,048.3	-1,706.4	-358.4	1,728.8	1.15	1.06	-0.43	
8,396.0	91.70	179.20	7,046.5	-1,754.3	-357.4	1,776.5	2.37	-1.88	1.46	
8,443.0	89.30	178.50	7,046.0	-1,801.3	-356.5	1,823.3	5.32	-5.11	-1.49	
8,491.0	89.40	178.70	7,046.6	-1,849.3	-355.3	1,871.1	0.47	0.21	0.42	

Company:	Synergy Resources	Local Co-ordinate Reference:	Well SRC Gies T-15-22NHZ
Project:	SEC.15-T7N-R65W	TVD Reference:	WELL @ 4851.0ft (Original Well Elev)
Site:	SRC Gies Pad Sec.15-T7N-R65W	MD Reference:	WELL @ 4851.0ft (Original Well Elev)
Well:	SRC Gies T-15-22NHZ	North Reference:	True
Wellbore:	Wellbore #1	Survey Calculation Method:	Minimum Curvature
Design:	Wellbore #1	Database:	Landmark

Survey									
Measured Depth (ft)	Inclination (°)	Azimuth (°)	Vertical Depth (ft)	+N/-S (ft)	+E/-W (ft)	Vertical Section (ft)	Dogleg Rate (°/100ft)	Build Rate (°/100ft)	Turn Rate (°/100ft)
8,539.0	89.40	178.00	7,047.1	-1,897.3	-353.9	1,918.8	1.46	0.00	-1.46
8,587.0	89.80	179.40	7,047.4	-1,945.3	-352.9	1,966.6	3.03	0.83	2.92
8,634.0	90.10	178.70	7,047.5	-1,992.3	-352.1	2,013.3	1.62	0.64	-1.49
8,682.0	90.60	178.20	7,047.2	-2,040.2	-350.8	2,061.1	1.47	1.04	-1.04
8,729.0	89.20	178.30	7,047.3	-2,087.2	-349.3	2,107.8	2.99	-2.98	0.21
8,777.0	89.10	178.30	7,048.0	-2,135.2	-347.9	2,155.5	0.21	-0.21	0.00
8,824.0	90.20	178.70	7,048.3	-2,182.2	-346.7	2,202.3	2.49	2.34	0.85
8,872.0	91.60	178.50	7,047.5	-2,230.1	-345.5	2,250.0	2.95	2.92	-0.42
8,920.0	92.20	179.90	7,045.9	-2,278.1	-344.8	2,297.8	3.17	1.25	2.92
8,968.0	92.60	182.40	7,043.9	-2,326.1	-345.8	2,345.7	5.27	0.83	5.21
9,015.0	91.90	182.70	7,042.1	-2,373.0	-347.9	2,392.6	1.62	-1.49	0.64
9,062.0	91.10	183.30	7,040.8	-2,419.9	-350.4	2,439.6	2.13	-1.70	1.28
9,110.0	91.90	182.40	7,039.6	-2,467.8	-352.7	2,487.6	2.51	1.67	-1.88
9,157.0	90.60	182.70	7,038.5	-2,514.8	-354.8	2,534.5	2.84	-2.77	0.64
9,205.0	89.00	182.00	7,038.7	-2,562.7	-356.8	2,582.5	3.64	-3.33	-1.46
9,252.0	88.80	181.70	7,039.6	-2,609.7	-358.3	2,629.4	0.77	-0.43	-0.64
9,301.0	88.00	181.00	7,041.0	-2,658.7	-359.5	2,678.4	2.17	-1.63	-1.43
9,348.0	87.90	180.80	7,042.7	-2,705.6	-360.2	2,725.2	0.48	-0.21	-0.43
9,396.0	88.00	180.60	7,044.4	-2,753.6	-360.8	2,773.1	0.47	0.21	-0.42
9,443.0	89.30	179.70	7,045.5	-2,800.6	-360.9	2,820.0	3.36	2.77	-1.91
9,491.0	90.10	178.90	7,045.7	-2,848.6	-360.3	2,867.8	2.36	1.67	-1.67
9,539.0	89.70	179.40	7,045.8	-2,896.6	-359.6	2,915.6	1.33	-0.83	1.04
9,586.0	89.90	179.20	7,046.0	-2,943.6	-359.0	2,962.4	0.60	0.43	-0.43
9,682.0	90.40	178.70	7,045.7	-3,039.5	-357.3	3,058.0	0.74	0.52	-0.52
9,729.0	91.20	178.50	7,045.1	-3,086.5	-356.1	3,104.7	1.75	1.70	-0.43
9,777.0	91.50	177.80	7,043.9	-3,134.5	-354.6	3,152.4	1.59	0.63	-1.46
9,825.0	90.80	178.90	7,043.0	-3,182.4	-353.2	3,200.1	2.72	-1.46	2.29
9,872.0	90.70	179.70	7,042.4	-3,229.4	-352.6	3,247.0	1.72	-0.21	1.70
9,920.0	90.00	179.40	7,042.1	-3,277.4	-352.3	3,294.8	1.59	-1.46	-0.63
9,968.0	90.00	179.70	7,042.1	-3,325.4	-351.9	3,342.6	0.63	0.00	0.63
10,016.0	90.00	180.10	7,042.1	-3,373.4	-351.8	3,390.5	0.83	0.00	0.83
10,063.0	90.30	180.40	7,042.0	-3,420.4	-352.0	3,437.3	0.90	0.64	0.64
10,111.0	90.40	181.00	7,041.7	-3,468.4	-352.6	3,485.2	1.27	0.21	1.25
10,158.0	89.90	180.80	7,041.5	-3,515.4	-353.3	3,532.1	1.15	-1.06	-0.43
10,206.0	89.70	179.90	7,041.7	-3,563.4	-353.6	3,580.0	1.92	-0.42	-1.88
10,253.0	89.40	180.10	7,042.1	-3,610.4	-353.6	3,626.9	0.77	-0.64	0.43
10,301.0	88.50	179.90	7,043.0	-3,658.4	-353.6	3,674.7	1.92	-1.88	-0.42
10,349.0	88.50	180.30	7,044.2	-3,706.4	-353.7	3,722.6	0.83	0.00	0.83
10,397.0	89.70	180.30	7,045.0	-3,754.4	-353.9	3,770.5	2.50	2.50	0.00
10,444.0	90.70	180.40	7,044.8	-3,801.4	-354.2	3,817.3	2.14	2.13	0.21
10,492.0	89.90	179.90	7,044.5	-3,849.4	-354.4	3,865.2	1.97	-1.67	-1.04
10,539.0	89.80	179.70	7,044.7	-3,896.4	-354.2	3,912.1	0.48	-0.21	-0.43
10,587.0	89.70	178.90	7,044.9	-3,944.4	-353.6	3,959.9	1.68	-0.21	-1.67
10,634.0	90.50	179.00	7,044.8	-3,991.4	-352.8	4,006.7	1.72	1.70	0.21
10,730.0	89.50	178.50	7,044.8	-4,087.3	-350.7	4,102.2	1.16	-1.04	-0.52
10,825.0	89.90	178.00	7,045.3	-4,182.3	-347.8	4,196.6	0.67	0.42	-0.53
10,920.0	90.80	178.50	7,044.7	-4,277.3	-344.9	4,291.1	1.08	0.95	0.53
11,015.0	92.30	178.00	7,042.1	-4,372.2	-342.0	4,385.5	1.66	1.58	-0.53
11,094.0	93.10	178.50	7,038.4	-4,451.0	-339.5	4,464.0	1.19	1.01	0.63
11,149.0	93.10	178.50	7,035.4	-4,505.9	-338.1	4,518.6	0.00	0.00	0.00
BHL 470°FSL & 1424°FEL, Sec.22									

Company:	Synergy Resources	Local Co-ordinate Reference:	Well SRC Gies T-15-22NHZ
Project:	SEC.15-T7N-R65W	TVD Reference:	WELL @ 4851.0ft (Original Well Elev)
Site:	SRC Gies Pad Sec.15-T7N-R65W	MD Reference:	WELL @ 4851.0ft (Original Well Elev)
Well:	SRC Gies T-15-22NHZ	North Reference:	True
Wellbore:	Wellbore #1	Survey Calculation Method:	Minimum Curvature
Design:	Wellbore #1	Database:	Landmark

Casing Points					
Measured Depth (ft)	Vertical Depth (ft)	Name	Casing Diameter (")	Hole Diameter (")	
7,442.0	7,039.2	7"	7	7-1/2	

Checked By: _____	Approved By: _____	Date: _____
-------------------	--------------------	-------------