

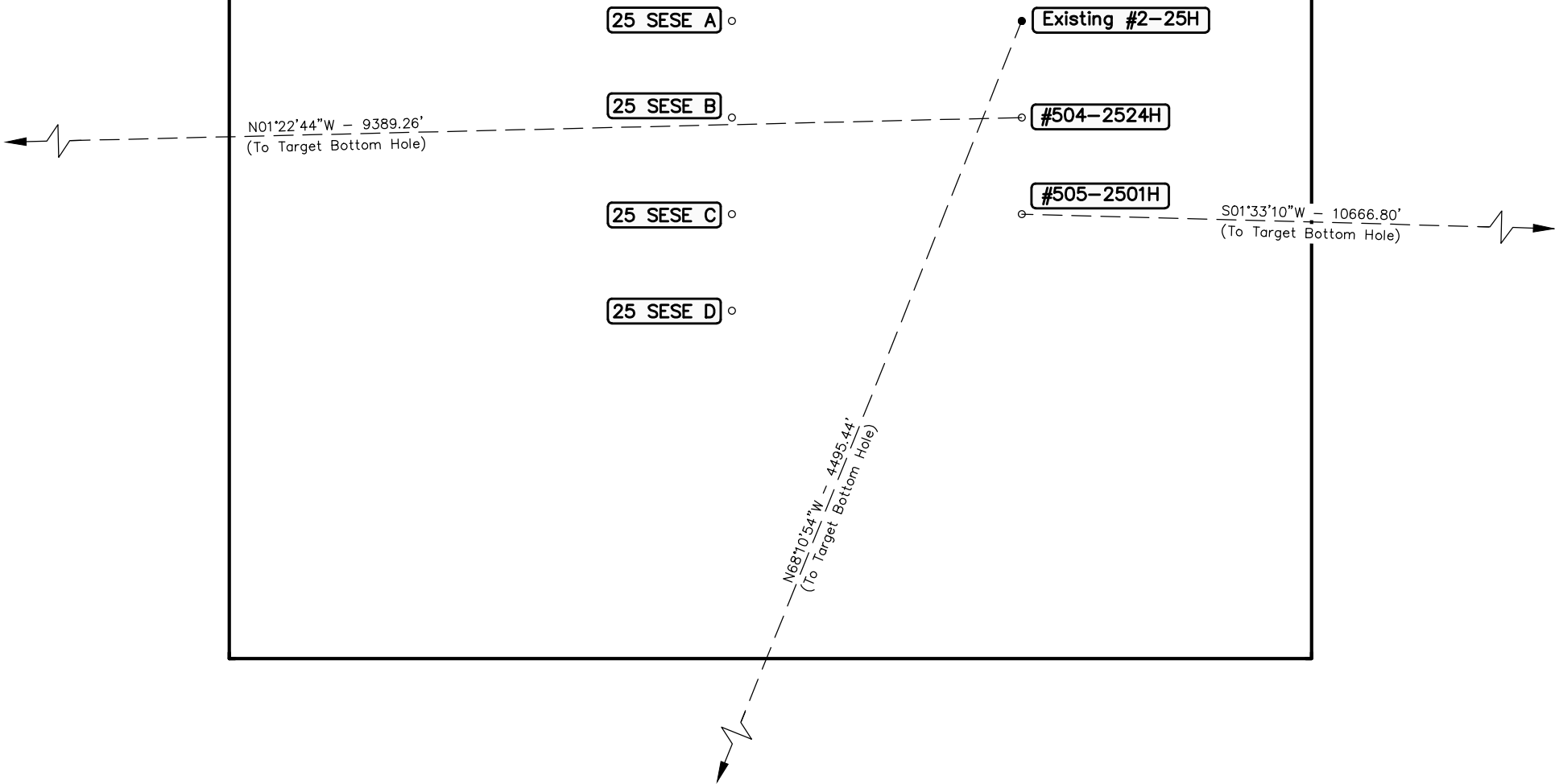
R62WSECTION 30

R63WSECTION 25

Section Line

Existing Road

Existing Access Road



EOG RESOURCES, INC

FOX CREEK 25 SESE
SECTION 25, T12N, R63W, 6th P.M.
SE 1/4 SE 1/4



UELS, LLC
Corporate Office * 85 South 200 East
Vernal, UT 84078 * (435) 789-1017

DRAWN BY: J.P.	DATE DRAWN: 11-12-14
SCALE: 1" = 80'	REVISED: 04-16-15 M.O.E.
MULTI-WELL PLAN	FIGURE #6