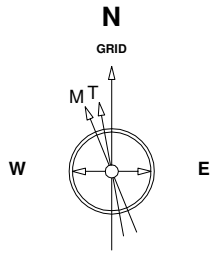


Great Western Operating Company, LLC

Location Colorado
Field Wattenberg
Installation Burr

Slot Slot #4
Well Burr FD 23-299HN
Wellbore Burr FD 23-299HN (PWB)



20-Aug-2014
IGRF Model [1900.0-2015.0] Dip: -29.73 deg Field: 32223.6 nT
Magnetic North is 4.46 deg West of True North
GRID North is 0.43 deg East of True North
To correct azimuth from True to GRID subtract 0.43 deg
To correct azimuth from Magnetic to GRID subtract 4.89 deg

Scale 1 cm = 400 ft

East (feet) ->

-12000 -11200 -10400 -9600 -8800 -8000 -7200 -6400 -5600 -4800 -4000 -3200 -2400 -1600 -800 0 800 1600

3200

2400

1600

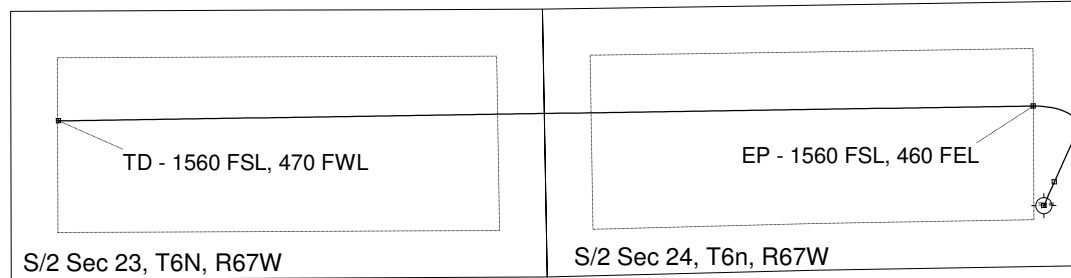
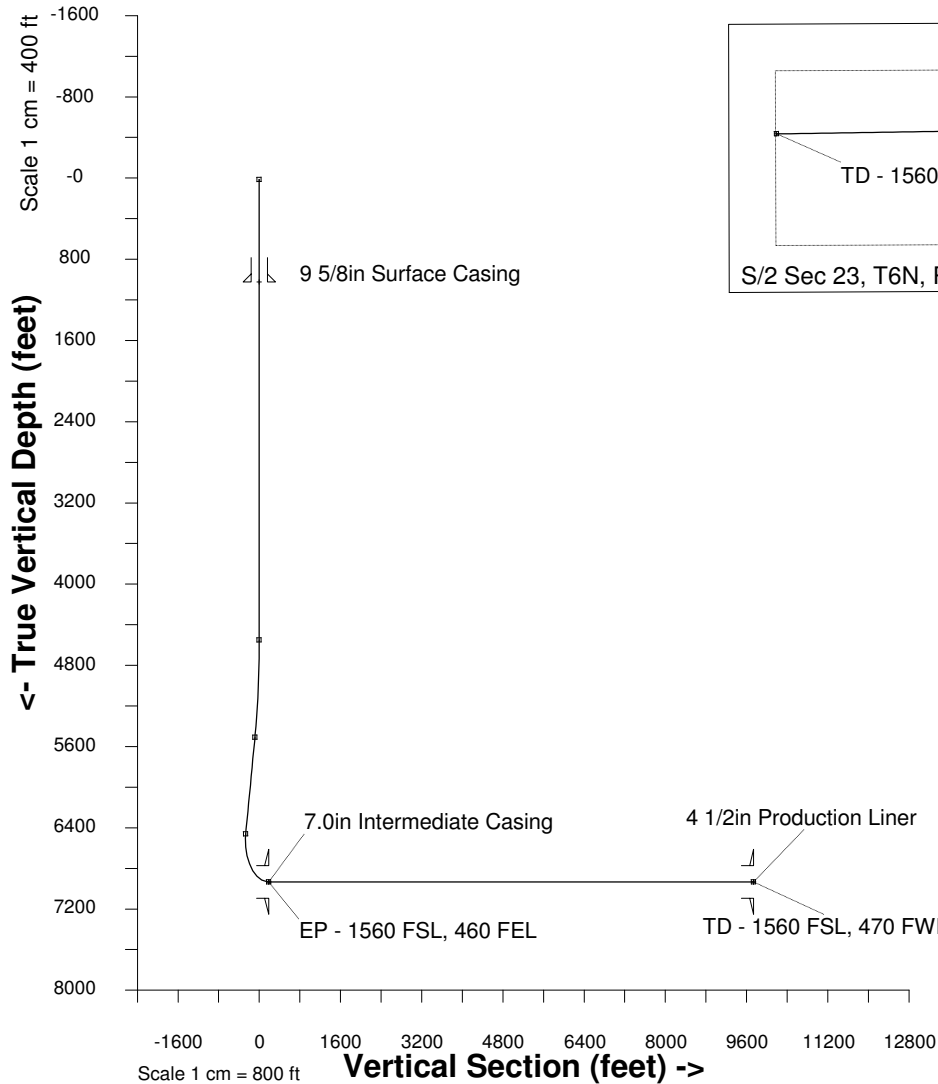
<- North(feet)

-800

-1600

-2400

Scale 1 cm = 400 ft



WELL PROFILE DATA

Point	MD	Inc	Azi	TVD	North	East	deg/100ft	V. Sect
Tie on	16.20	0.00	0.00	16.20	0.00	0.00	0.00	0.00
KOP	4550.00	0.00	0.00	4550.00	0.00	0.00	0.00	0.00
End of Build	5553.95	30.12	24.15	5508.35	235.29	105.48	3.00	-84.93
End of Hold	6654.23	30.12	24.15	6460.08	739.08	331.35	0.00	-266.79
Target EP - 1560 FSL,	7440.80	90.00	269.13	6933.00	981.09	-103.09	13.00	186.79
T.D. & Target TD - 1560	17042.99	90.00	269.13	6933.00	834.72	-9704.16	0.00	9740.00

Created by admin
Date plotted 21-Aug-2014
Plot reference is Burr FD 23-299HN (PWB).
Ref wellpath is Burr FD 23-299HN (PWP#1).
Coordinates are in feet reference Slot #4.
True Vertical Depths are reference Rig Datum.
Measured Depths are reference Rig Datum.
Rig Datum: Planned Datum #1
Rig Datum to Mean Sea Level: 4759.00 ft.
Plot North is aligned to GRID North.