

N 36°07'15" E  
358.79'  
2638.33' BH- 25' FSL  
2634' FWL } SEC. 15  
N 89°30'07"

N 36°07'15" E 358.79' BH- 25' FSL } SEC. 15  
2634' FWL }  
N 89°29'57" E 2638.33' N 89°30'07" E 2638.39'

N ¼ COR. SEC. 22  
2" ALUM. CAP  
ILLEGIBLE

22

N 89°31'01" | E 2640.55'

**NOTES:**  
BH LOCATION PROVIDED BY CLIENT.  
LAND SURFACE USE-DRYLAND CROP  
SEE ATTACHED MAP FOR ADDITIONAL  
IMPROVEMENTS WITHIN 500'.

**SURFACE LOCATION**  
GROUND ELEVATION= 5053"  
NAD83  
LATITUDE= 40.043452°  
LONGITUDE= 104.650917°

S 00°28'54" E 2642.60'

S ¼ COR. SEC. 22  
2½" ALUM. CAP  
PLS 38149, 2014

## LEGEND

S 89°34'07" W 2637.32'

S 89°34'07" W 2637.32'

**WELL LONG 22-15-6NCH TO BE  
LOCATED 263' FNL AND 2420' FWL**

I, JACOB S. FRISCH, A LICENSED PROFESSIONAL LAND SURVEYOR IN THE STATE OF COLORADO DO HEREBY CERTIFY TO EDGE ENERGY, THAT THE SURVEY AND WELL LOCATION CERTIFICATE SHOWN HEREON WERE DONE BY ME OR UNDER MY DIRECT SUPERVISION AND THAT THE DRAWING SHOWN HEREON ACCURATELY DEPICTS THE PROPOSED LOCATION OF THE WELL. THIS CERTIFICATE DOES NOT REPRESENT A LAND SURVEY PLAT OR IMPROVEMENT SURVEY PLAT AS DEFINED BY C.R.S. 38-51-102 AND CANNOT BE RELIED UPON TO DETERMINE OWNERSHIP.

1. THIS FIELD SURVEY CONFORMS TO THE MINIMUM STANDARDS SET BY THE C.O.G.C.C., RULE NO. 215
2. BEARINGS ARE BASED ON THE ASSUMPTION THAT THE NORTH LINE OF THE NORTHWEST QUARTER OF SECTION 22, BEARS N89°29'57"E BETWEEN THE MONUMENTS SHOWN HEREON.
3. GRID DISTANCES ARE SHOWN, AS GPS MEASURED IN THE FIELD, WITH TIES TO WELLS MEASURED PERPENDICULAR TO SECTION LINES. TO GET GROUND DISTANCES MULTIPLY THE SHOWN DISTANCE BY 1.000270914.
4. ELEVATIONS SHOWN ARE NAVD 88, AS DERIVED BY GPS OBSERVATIONS.
5. FIELD VERIFICATION OF MONUMENTS COMPLETED ON DECEMBER 26, 2014. WELL STAKING COMPLETED ON DECEMBER 09, 2014.

NOTICE: ACCORDING TO COLORADO LAW YOU MUST COMMENCE ANY LEGAL ACTION BASED UPON ANY DEFECT IN THIS SURVEY WITHIN THREE YEARS AFTER YOU FIRST DISCOVER SUCH DEFECT. IN NO EVENT MAY ANY ACTION BASED UPON ANY DEFECT IN THIS SURVEY BE COMMENCED MORE THAN TEN YEARS FROM THIS SAID DATE OF THIS CERTIFICATION SHOWN HEREON.

JACOB S. FRISCH, PLS 44195 38149  
DATE: 04-06-15  
JOB NO: B14.BBH.000  
FOR AND ON BEHALF OF J.S., LLC

SHEET 1 OF 2

REPAIRED BY:

**PFS**  LLC  
Petroleum Field Services, LLC  
7535 Hilltop Circle  
Denver, CO 80221

WELL NAME:  
LONG 22-15-6NCH

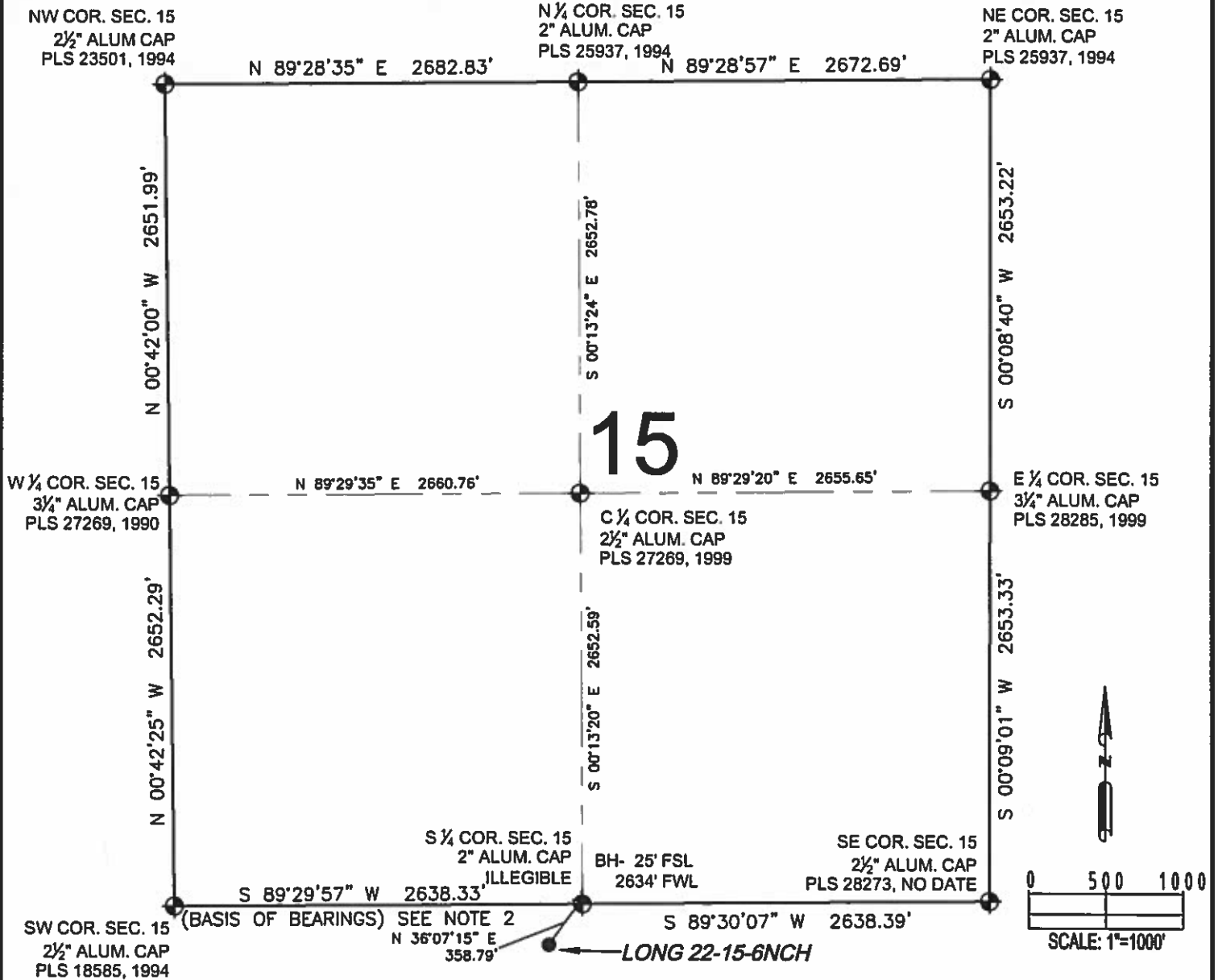
**SURFACE LOCATION:**  
NE 1/4 NW 1/4, SEC. 22, T1N, R65W, 6TH P.M.  
WELD COUNTY, COLORADO

CHECKED BY:  
WDW

PREPARED FOR:

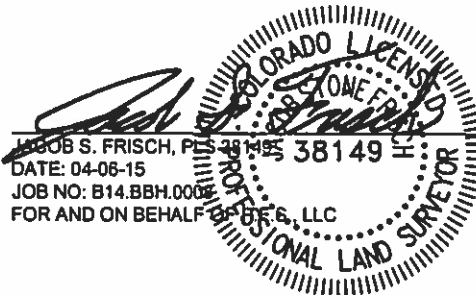
EDGE  
ENERGY

# LONG 22-15-6NCH WELL LOCATION CERTIFICATE



## LEGEND

- ⊙ = EXISTING MONUMENT
- = CALCULATED POSITION
- = PROPOSED WELL
- ◆ = EXISTING WELL
- ⚓ = BOTTOM HOLE
- ▲ = LANDING POINT
- LP = LANDING POINT
- BH = BOTTOM HOLE



SHEET 2 OF 2

PREPARED BY:



FIELD DATE:  
12-09-14

DRAWING DATE:  
04-03-15

BY:  
KAD

CHECKED BY:  
WDW

WELL NAME:

LONG 22-15-6NCH

SURFACE LOCATION:

NE 1/4 NW 1/4, SEC. 22, T1N, R65W, 6TH P.M.  
WELD COUNTY, COLORADO

PREPARED FOR:

EDGE  
ENERGY