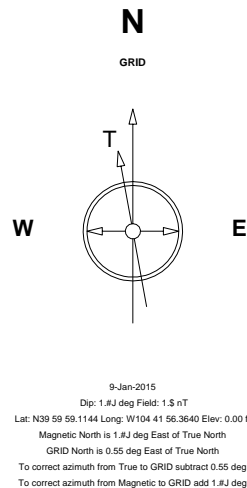
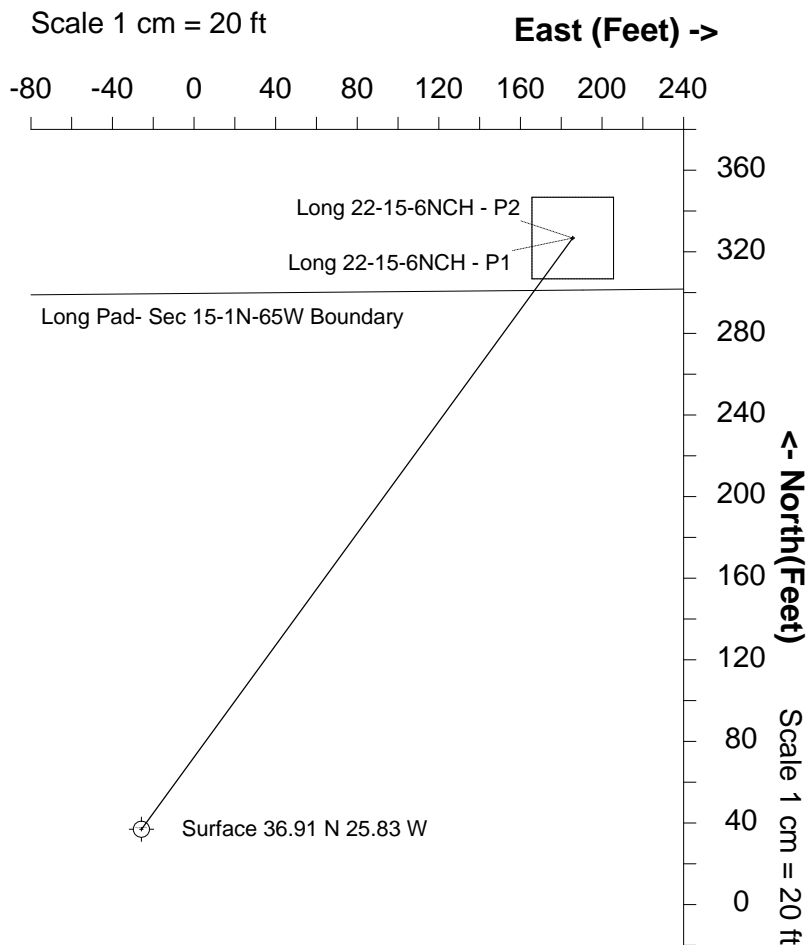
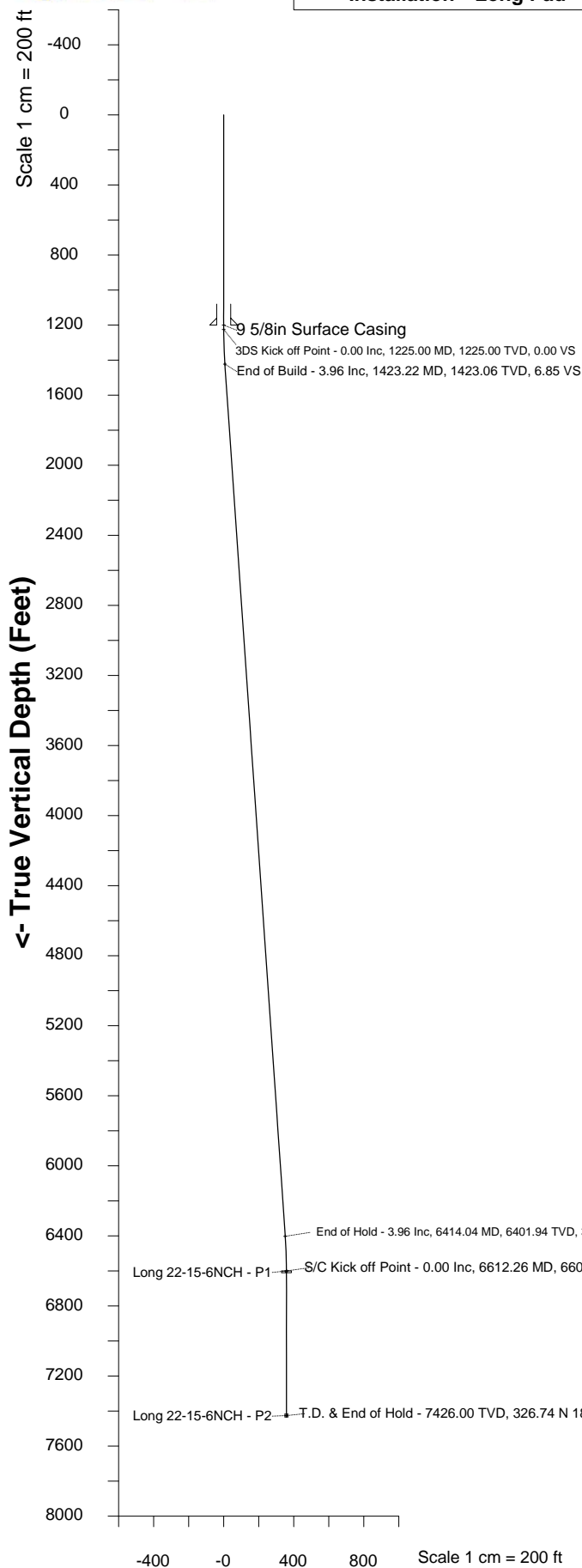




# Edge Energy LLC

Location	DJ Basin	Slot	Long 22-15-6NCH
Field	Wattenberg	Well	Long 22-15-6NCH
Installation	Long Pad	Wellbore	Long 22-15-6NCH



Created by	admin
Date plotted	2-Apr-2015
Plot reference is Long 22-15-6NCH. Ref wellpath is Long 22-15-6NCH. Coordinates are in Feet reference Installation Centre. True Vertical Depths are reference Rig Datum. Measured Depths are reference Rig Datum. Rig Datum: Planned Datum #1 Rig Datum to Mean Sea Level: 5077.00 ft. Plot North is aligned to GRID North.	

Vertical Section (Feet) ->

Azimuth 36.11 with reference 36.91 N, 25.83 W from Installation Centre



Edge Energy, LLC  
SYSDRILL  
Well Design Combined Report  
Wellbore: Long 22-15-6NCH

Wellhead Details							
Name	Northing	Easting	Latitude	Longitude	North	East	Elevation Above Inst.
Long 22-15-6NCH	1259813.4074	3237718.4574	40.04345200	-104.65091700	36.91N	25.83W	-0.00

Declination			
Date	Source	Time	
9-Jan-2015			09:02

Installation Details				
Name	Northing	Easting	Coord System Name	North Alignment
Long Pad	1259776.4969	3237744.2898	CO83-NF on NORTH AMERICAN DATUM 1983 datum	Grid

Summary Wellpath									
MD[ft]	Inc[deg]	Azi[deg]	TVD[ft]	North[ft]	East[ft]	Dogleg [deg/100ft]	Vertical Section[ft]	Northing	Easting
25.00	0.00	0.000	25.00	0.00N	0.00E		0.00	1259813.41	3237718.46
7438.26	0.00	270.000	7426.00	289.83N	211.44E	==>	358.76	1260103.23	3237929.89

Interpolated Wellpath								
MD[ft]	Inc[deg]	Azi[deg]	TVD[ft]	North[ft]	East[ft]	Dogleg [deg/100ft]	Vertical Section[ft]	All Station Comments
0.00	0.00	0.000	0.00	0.00N	0.00E		0.00	Rig Datum Slot Datum
25.00	0.00	0.000	25.00	0.00N	0.00E	==>	0.00	
100.00	0.00	0.000	100.00	0.00N	0.00E	==>	0.00	
200.00	0.00	0.000	200.00	0.00N	0.00E	==>	0.00	
300.00	0.00	0.000	300.00	0.00N	0.00E	==>	0.00	
400.00	0.00	0.000	400.00	0.00N	0.00E	==>	0.00	
500.00	0.00	0.000	500.00	0.00N	0.00E	==>	0.00	
600.00	0.00	0.000	600.00	0.00N	0.00E	==>	0.00	
700.00	0.00	0.000	700.00	0.00N	0.00E	==>	0.00	
800.00	0.00	0.000	800.00	0.00N	0.00E	==>	0.00	
900.00	0.00	0.000	900.00	0.00N	0.00E	==>	0.00	
1000.00	0.00	0.000	1000.00	0.00N	0.00E	==>	0.00	
1100.00	0.00	0.000	1100.00	0.00N	0.00E	==>	0.00	
1200.00	0.00	0.000	1200.00	0.00N	0.00E	==>	0.00	
1300.00	1.50	36.110	1299.99	0.79N	0.58E	2.00	0.98	
1400.00	3.50	36.110	1399.89	4.32N	3.15E	2.00	5.34	
1500.00	3.96	36.110	1499.66	9.83N	7.17E	==>	12.16	
1600.00	3.96	36.110	1599.42	15.41N	11.24E	==>	19.08	
1700.00	3.96	36.110	1699.18	21.00N	15.32E	==>	25.99	
1800.00	3.96	36.110	1798.94	26.58N	19.39E	==>	32.90	
1900.00	3.96	36.110	1898.70	32.17N	23.47E	==>	39.82	
2000.00	3.96	36.110	1998.46	37.75N	27.54E	==>	46.73	
2100.00	3.96	36.110	2098.22	43.34N	31.62E	==>	53.65	
2200.00	3.96	36.110	2197.98	48.92N	35.69E	==>	60.56	
2300.00	3.96	36.110	2297.74	54.51N	39.77E	==>	67.47	
2400.00	3.96	36.110	2397.50	60.09N	43.84E	==>	74.39	
2500.00	3.96	36.110	2497.27	65.68N	47.92E	==>	81.30	
2600.00	3.96	36.110	2597.03	71.27N	51.99E	==>	88.21	
2700.00	3.96	36.110	2696.79	76.85N	56.06E	==>	95.13	
2800.00	3.96	36.110	2796.55	82.44N	60.14E	==>	102.04	
2900.00	3.96	36.110	2896.31	88.02N	64.21E	==>	108.96	
3000.00	3.96	36.110	2996.07	93.61N	68.29E	==>	115.87	
3100.00	3.96	36.110	3095.83	99.19N	72.36E	==>	122.78	
3200.00	3.96	36.110	3195.59	104.78N	76.44E	==>	129.70	
3300.00	3.96	36.110	3295.35	110.36N	80.51E	==>	136.61	
3400.00	3.96	36.110	3395.11	115.95N	84.59E	==>	143.52	
3500.00	3.96	36.110	3494.87	121.53N	88.66E	==>	150.44	
3600.00	3.96	36.110	3594.63	127.12N	92.74E	==>	157.35	
3700.00	3.96	36.110	3694.39	132.70N	96.81E	==>	164.27	
3800.00	3.96	36.110	3794.15	138.29N	100.89E	==>	171.18	
3900.00	3.96	36.110	3893.92	143.88N	104.96E	==>	178.09	

All data is in Feet unless otherwise stated  
Coordinates are from Slot MD's are from Rig and TVD's are from Rig ( Planned Datum #1 5077.0ft above Mean Sea Level )  
Vertical Section is from 0.00N 0.00E on azimuth 36.110 degrees  
Bottom hole distance is 358.76 Feet on azimuth 36.11 degrees from Wellhead  
Calculation method uses Minimum Curvature method  
Prepared by Integrated Petroleum Technologies, Inc.  
Date Printed: 2-Apr-2015



Interpolated Wellpath								
MD[ft]	Inc[deg]	Azi[deg]	TVD[ft]	North[ft]	East[ft]	Dogleg [deg/100ft]	Vertical Section[ft]	All Station Comments
4000.00	3.96	36.110	3993.68	149.46N	109.04E	==>	185.01	
4100.00	3.96	36.110	4093.44	155.05N	113.11E	==>	191.92	
4200.00	3.96	36.110	4193.20	160.63N	117.19E	==>	198.83	
4300.00	3.96	36.110	4292.96	166.22N	121.26E	==>	205.75	
4400.00	3.96	36.110	4392.72	171.80N	125.33E	==>	212.66	
4500.00	3.96	36.110	4492.48	177.39N	129.41E	==>	219.57	
4600.00	3.96	36.110	4592.24	182.97N	133.48E	==>	226.49	
4700.00	3.96	36.110	4692.00	188.56N	137.56E	==>	233.40	
4800.00	3.96	36.110	4791.76	194.14N	141.63E	==>	240.32	
4900.00	3.96	36.110	4891.52	199.73N	145.71E	==>	247.23	
5000.00	3.96	36.110	4991.28	205.31N	149.78E	==>	254.14	
5100.00	3.96	36.110	5091.04	210.90N	153.86E	==>	261.06	
5200.00	3.96	36.110	5190.80	216.48N	157.93E	==>	267.97	
5300.00	3.96	36.110	5290.57	222.07N	162.01E	==>	274.88	
5400.00	3.96	36.110	5390.33	227.66N	166.08E	==>	281.80	
5500.00	3.96	36.110	5490.09	233.24N	170.16E	==>	288.71	
5600.00	3.96	36.110	5589.85	238.83N	174.23E	==>	295.63	
5700.00	3.96	36.110	5689.61	244.41N	178.31E	==>	302.54	
5800.00	3.96	36.110	5789.37	250.00N	182.38E	==>	309.45	
5900.00	3.96	36.110	5889.13	255.58N	186.46E	==>	316.37	
6000.00	3.96	36.110	5988.89	261.17N	190.53E	==>	323.28	
6100.00	3.96	36.110	6088.65	266.75N	194.60E	==>	330.19	
6200.00	3.96	36.110	6188.41	272.34N	198.68E	==>	337.11	
6300.00	3.96	36.110	6288.17	277.92N	202.75E	==>	344.02	
6400.00	3.96	36.110	6387.93	283.51N	206.83E	==>	350.94	
6500.00	2.25	36.110	6487.77	288.05N	210.14E	2.00	356.56	
6600.00	0.25	36.110	6587.74	289.81N	211.43E	2.00	358.73	
6700.00	0.00	36.110	6687.74	289.83N	211.44E	==>	358.76	
6800.00	0.00	36.110	6787.74	289.83N	211.44E	==>	358.76	
6900.00	0.00	36.110	6887.74	289.83N	211.44E	==>	358.76	
7000.00	0.00	36.110	6987.74	289.83N	211.44E	==>	358.76	
7100.00	0.00	36.110	7087.74	289.83N	211.44E	==>	358.76	
7200.00	0.00	36.110	7187.74	289.83N	211.44E	==>	358.76	
7300.00	0.00	36.110	7287.74	289.83N	211.44E	==>	358.76	
7400.00	0.00	36.110	7387.74	289.83N	211.44E	==>	358.76	
7438.26	0.00	270.000	7426.00	289.83N	211.44E	==>	358.76	



### Hole Sections

Diameter [in]	Start MD[ft]	Start TVD[ft]	Start North[ft]	Start East[ft]	End MD[ft]	End TVD[ft]	End North[ft]	End East[ft]
13 1/2	25.00	25.00	0.00N	0.00E	1200.00	1200.00	0.00N	0.00E
8 3/4	1200.00	1200.00	0.00N	0.00E	7438.26	7426.00	289.83N	211.44E

### Casings

Name	Top MD[ft]	Top TVD[ft]	Top North[ft]	Top East[ft]	Shoe MD[ft]	Shoe TVD[ft]	Shoe North[ft]	Shoe East[ft]
9 5/8in Surface Casing	25.00	25.00	0.00N	0.00E	1200.00	1200.00	0.00N	0.00E

### Targets

Name	North[ft]	East[ft]	TVD[ft]	Latitude	Longitude	Northing	Easting	Last Revised
Long 22-15-6NCH - P1	289.83N	211.44E	6600.00	40.04424201	-104.65015193	1260103.23	3237929.89	19-Mar-2015
Long 22-15-6NCH - P2	289.83N	211.44E	7426.00	40.04424201	-104.65015193	1260103.23	3237929.89	19-Mar-2015

### Survey Tool Program

Reference	Survey Name	MD[ft]	TVD[ft]	Survey Tool	Error Model
364975	Planned	7438.26	7426.00	WdW Rate Gyro	Standard

### Notes

SYSDRILL  
Closest Approach + Clearance Factor Summary Report  
Wellbore: Long 22-15-6NCH



Ellipse separations are reported ONLY if BOTH wells have uncertainty data  
Only Depth and Magnetic Reference Field error terms are correlated across tie points  
Proximities beyond 2500.00ft with expansion rate of 0.00ft/1000ft are not reported  
Scan limit is calculated on CENTRE to CENTRE distance

Summary data uses Closest Approach clearance calculation for all minima  
Hole size/Casings ARE included  
Hole size/Casings are NOT subtracted from Centre-Centre distance  
Confidence limit of 95.00% / 2.80 SD.

Wellbore		
Name	Created	Last Revised
Long 22-15-6NCH	31-Mar-2015	2-Apr-2015

Well		
Name	Government ID	Last Revised
Long 22-15-6NCH		19-Mar-2015

Slot						
Name	Grid Northing	Grid Easting	Latitude	Longitude	North	East
Long 22-15-6NCH	1259813.4074	3237718.4574	40.04345200	-104.65091700	36.91N	25.83W

Installation				
Name	Easting	Northing	Coord System Name	North Alignment
Long Pad	3237744.2898	1259776.4969	CO83-NF on NORTH AMERICAN DATUM 1983 datum	Grid

Field				
Name	Easting	Northing	Coord System Name	North Alignment
Wattenberg	3224403.5855	1243770.7568	CO83-NF on NORTH AMERICAN DATUM 1983 datum	Grid

Clearance Summary							
Offset WellName	Separation [ft]	MD[ft]	Diverging From[ft]	Ellipse Separation [ft]	Ellipse MD[ft]	Clearance Factor	Clearance MD[ft]
Long 22-15-6NCH	0.00	6612.26	6612.26	0.04	6685.10	1.05	6685.10
LONG 22-15-5CH	14.97	1225.00	1225.00	12.12	1189.70	5.27	1189.70
Long 22-15-7NBH	15.12	1189.70	1189.70	12.28	1189.70	5.33	1189.70
Long 22-15 11NCH	18.98	1506.17	1506.17	16.22	1506.17	6.86	1517.78
LONG 22-15-4NBH	29.61	1337.34	1337.34	26.84	1353.74	10.48	1402.95
Long 22-15-12NBH	29.91	1189.70	7025.36	27.07	1189.70	10.53	1189.70
Long 22-15-8NCH	30.09	1189.70	7062.40	27.25	1189.70	10.60	1189.70
Long 22-15-10NBH	33.53	1490.79	1490.79	30.80	1490.79	12.20	1517.78
Long 22-15-13CH	34.04	1189.70	7236.72	31.20	1189.70	11.99	1189.70
Long 22-15-14NCH	43.52	1189.70	6936.01	40.68	1189.70	15.33	1189.70
LONG 22-15-3NCH	43.91	1372.59	1372.59	41.08	1386.55	15.16	1452.17
Long 22-15-9CH	45.05	1189.70	1189.70	42.21	1189.70	15.87	1189.70
Long 22-15-2NBH	45.29	1837.51	1837.51	41.54	1862.27	11.53	2026.31
Long 22-15-2NBH	45.29	1837.51	7438.26	41.54	1862.27	11.53	2026.31
Long 22-15-15NBH	55.30	1189.70	1189.70	52.46	1189.70	19.47	1189.70
Long 22-15-1CH	60.00	1818.94	1818.94	56.28	1829.46	15.38	1993.50
Long 22-15-1CH	60.00	1818.94	7438.26	56.28	1829.46	15.38	1993.50
Long 22-15-16NCH	68.35	1189.70	1189.70	65.51	1189.70	24.07	1189.70
Long 22-15-17CH	82.28	1189.70	1189.70	79.44	1189.70	28.97	1189.70
Long 22-15-18NBH	90.11	1189.70	1189.70	87.27	1189.70	31.73	1189.70
Long 22-15-19CH	105.07	1189.70	1189.70	102.23	1189.70	37.00	1189.70

All data is in Feet unless otherwise stated  
Coordinates are from Slot MD's are from Rig and TVD's are from Rig ( Planned Datum #1 5077.0ft above Mean Sea Level )  
Vertical Section is from 0.00N 0.00E on azimuth 36.110 degrees  
Prepared by Integrated Petroleum Technologies, Inc.  
Date Printed: 2-Apr-2015

SYSDRILL  
Closest Approach + Clearance Factor Summary Report  
Wellbore: Long 22-15-6NCH



Clearance Summary							
Offset WellName	Separation [ft]	MD[ft]	Diverging From[ft]	Ellipse Separation [ft]	Ellipse MD[ft]	Clearance Factor	Clearance MD[ft]
Long 22-15-20NBH	120.04	1189.70	1189.70	117.20	1189.70	42.27	1189.70
Drake #01N-65W-22-1C	869.46	7438.26	7438.26	830.23	7438.26	22.16	7438.26
Drake #01N-65W-22-2N	998.54	7384.49	7384.49	956.22	7384.49	23.60	7390.49
Drake #01N-65W-22-3N	1145.09	7384.43	7384.43	1100.82	7384.43	25.87	7390.49
Drake #01N-65W-22-4N	1296.63	7384.43	7384.43	1250.97	7384.43	28.39	7390.49