



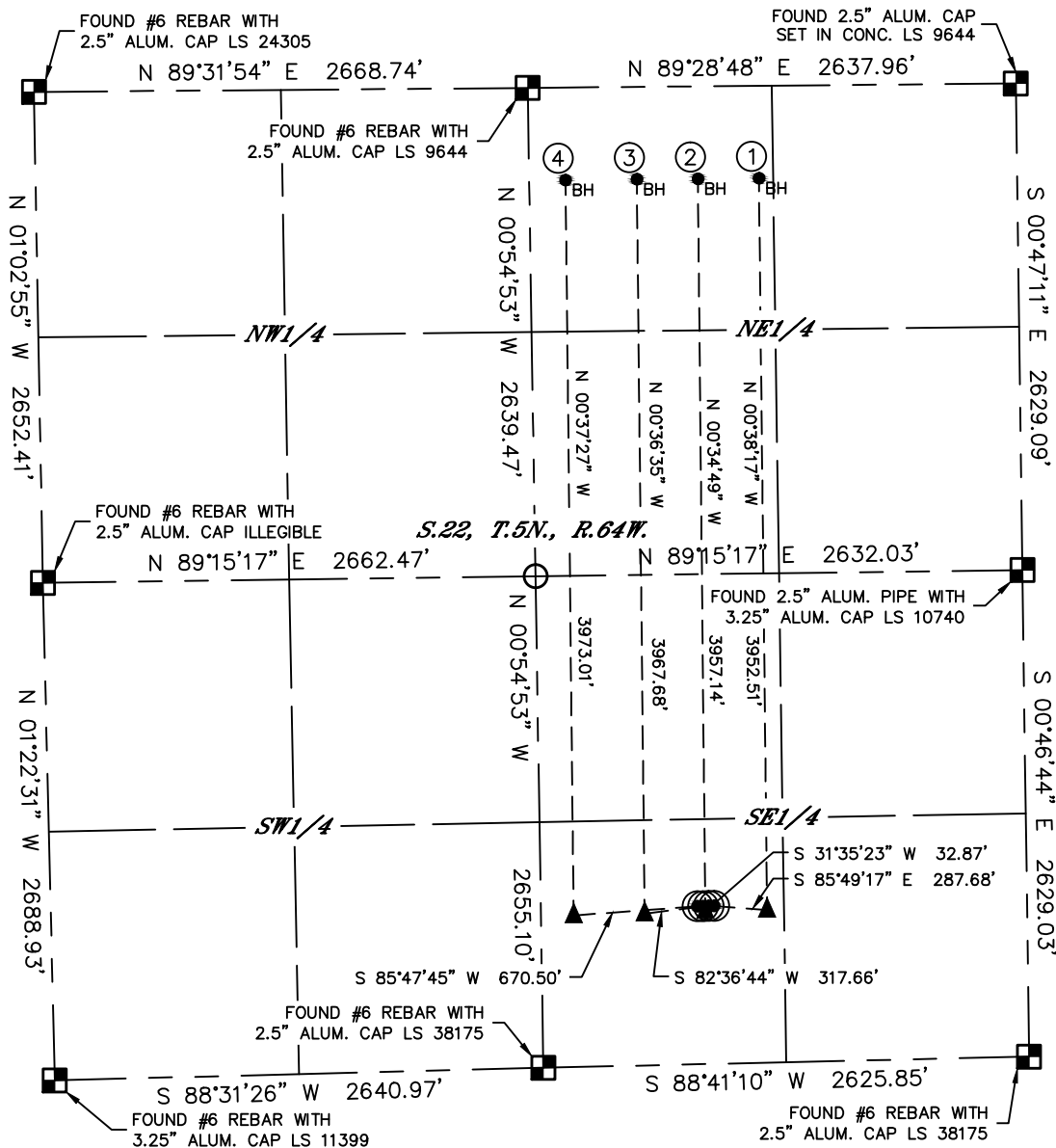
Lat40°, Inc. 6250 W. 10th Street, Unit 2, Greeley, CO 970-515-5294

MULTI-WELL PLAN

SAPPINGTON 5N64W22D PAD

THIS MAP DOES NOT REPRESENT A BOUNDARY SURVEY

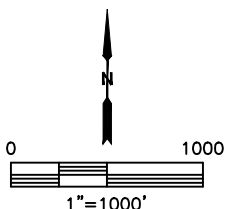
SECTION: 22
TOWNSHIP: 5N
RANGE: 64W
6TH. P.M.
WELD COUNTY, CO



#	WELL NAME	BHL FOOTAGE				BHL LAT °	BHL LONG °	BHL S-T-R
1	SAPPINGTON 22T-201	500	FNL	1395	FEL	40.39071	-104.53142	22-5-64
2	SAPPINGTON 22T-341	500	FNL	1725	FEL	40.39071	-104.53261	22-5-64
3	SAPPINGTON 22Q-221	500	FNL	2055	FEL	40.39071	-104.53379	22-5-64
4	SAPPINGTON 22Q-301	500	FNL	2440	FEL	40.39071	-104.53517	22-5-64

LEGEND

- = ALIQUOT MONUMENT AS DESCRIBED
- = CALCULATED POSITION
- = SURFACE HOLE LOCATION (SHL)
- ▲ = ENTRY POINT LOCATION (EP)
- BH = BOTTOM HOLE LOCATION (BHL)





Lat40°, Inc. 6250 W. 10th Street, Unit 2, Greeley, CO 970-515-5294

MULTI-WELL PLAN

SAPPINGTON 5N64W22D PAD

SECTION: 22
TOWNSHIP: 5N
RANGE: 64W
6TH. P.M.
WELD COUNTY, CO

