

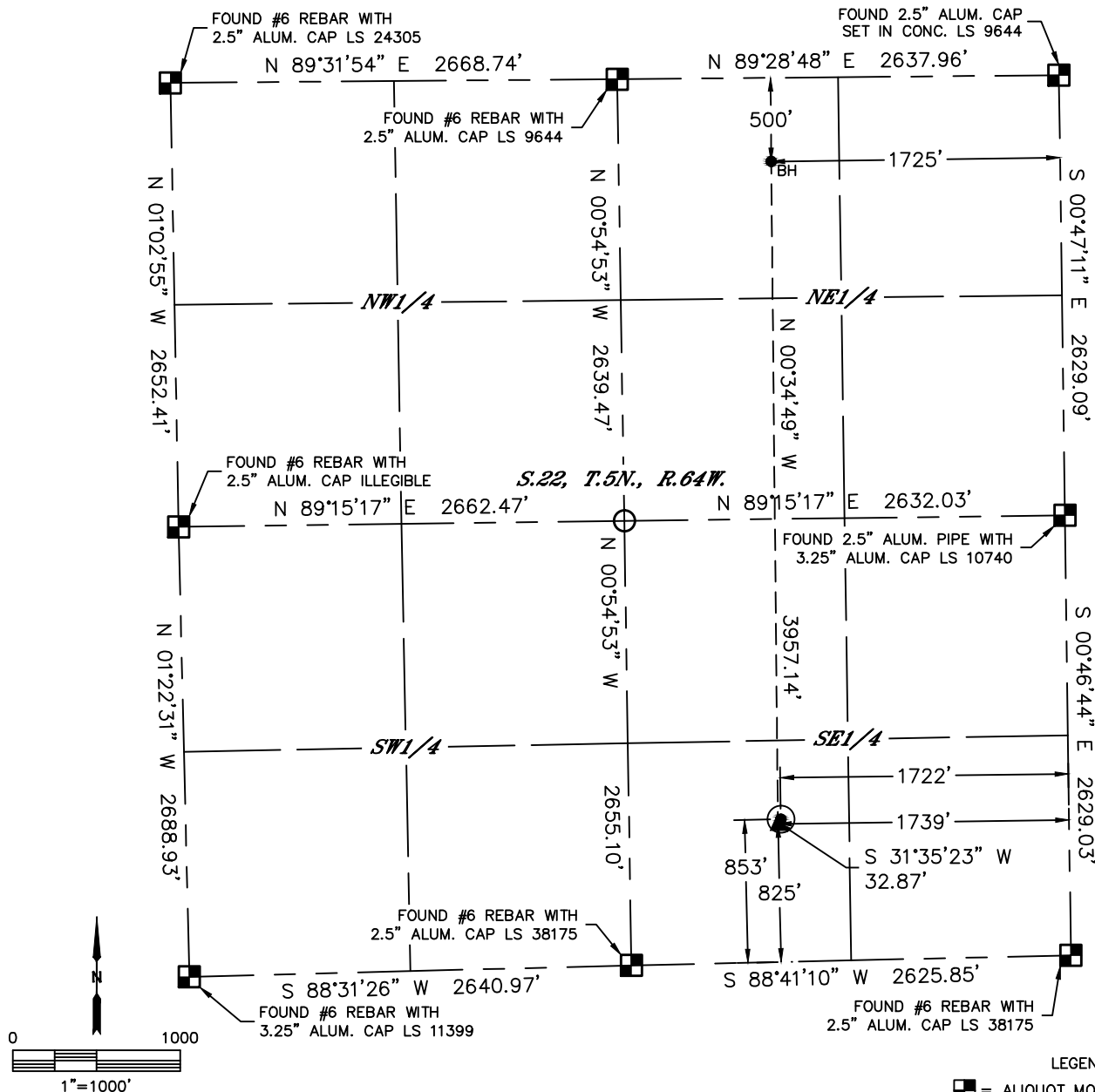


Lat40°, Inc. 6250 W. 10th Street, Unit 2, Greeley, CO 970-515-5294

WELL LOCATION CERTIFICATE

SAPPINGTON 22T-341

SECTION: 22
TOWNSHIP: 5N
RANGE: 64W
6TH. P.M.
WELD COUNTY, CO



CLIENT: PDC ENGERY					LANDMAN: BARNEY HAMMOND				
INSTRUMENT OPERATOR: ADAM KELLY					SURVEY DATE: 12/4/2014		SURFACE USE: CROP LAND		
SHL FOOTAGE		SHL LAT °		SHL LONG °	SHL PDOP	SHL ELEV (FT.)	SHL 1/4/1/4	SHL S-T-R	
853	FSL	1722	FEL	40.37993	-104.53255	2.4	4601	SWSE	22-5-64

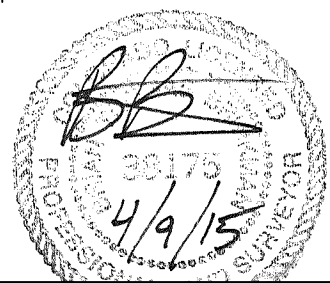
BHL FOOTAGE				BHL LAT °	BHL LONG °	BHL S-T-R	EP LAT °	EP LONG °	EP S-T-R
500	FNL	1725	FEL	40.39071	-104.53261	22-5-64	40.37985	-104.53262	22-5-64

NEAREST CULTURAL ITEMS	
BUILDING	±740' NW
BUILDING UNIT	±838' NW
HIGH OCCUPANCY BUILDING UNIT	5280'+
DESIGNATED OUTSIDE ACTIVITY AREA	5280'+
PUBLIC ROAD (COUNTY ROAD 54)	±844' S
ABOVE GROUND UTILITY	±784' NW
RAILROAD	±1661' NE
PROPERTY LINE	±191' S

NOTE:

- 1) Bearings shown are Grid Bearings of the Colorado State Plane Coordinate System, North Zone, North American Datum 1983. The lineal dimensions as contained herein are based upon the "U.S. Survey Foot."
- 2) Ground elevations are based on an observed GPS elevation (NAVD 1988 DATUM).
- 3) Latitude and Longitude shown are (NAD 83 DATUM).
- 4) IMPROVEMENTS: See LOCATION DRAWING for all visible improvements within 500' of oil and gas location.
- 5) This map does not represent a boundary survey

- LEGEND
- = ALIQUOT MONUMENT AS DESCRIBED
 - = CALCULATED POSITION
 - = SURFACE HOLE LOCATION (SHL)
 - ▲ = ENTRY POINT LOCATION (EP)
 - BH = BOTTOM HOLE LOCATION (BHL)
 - ⊙ = EXISTING WELL
 - ⊙ = ABANDONED WELL



Brian T. Brinkman - On behalf of Lat40°, Inc.
Colorado Licensed Professional Land Surveyor No. 38175
DATE: 4/8/2015
PROJECT#: 2014077

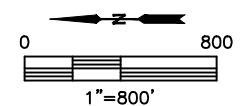
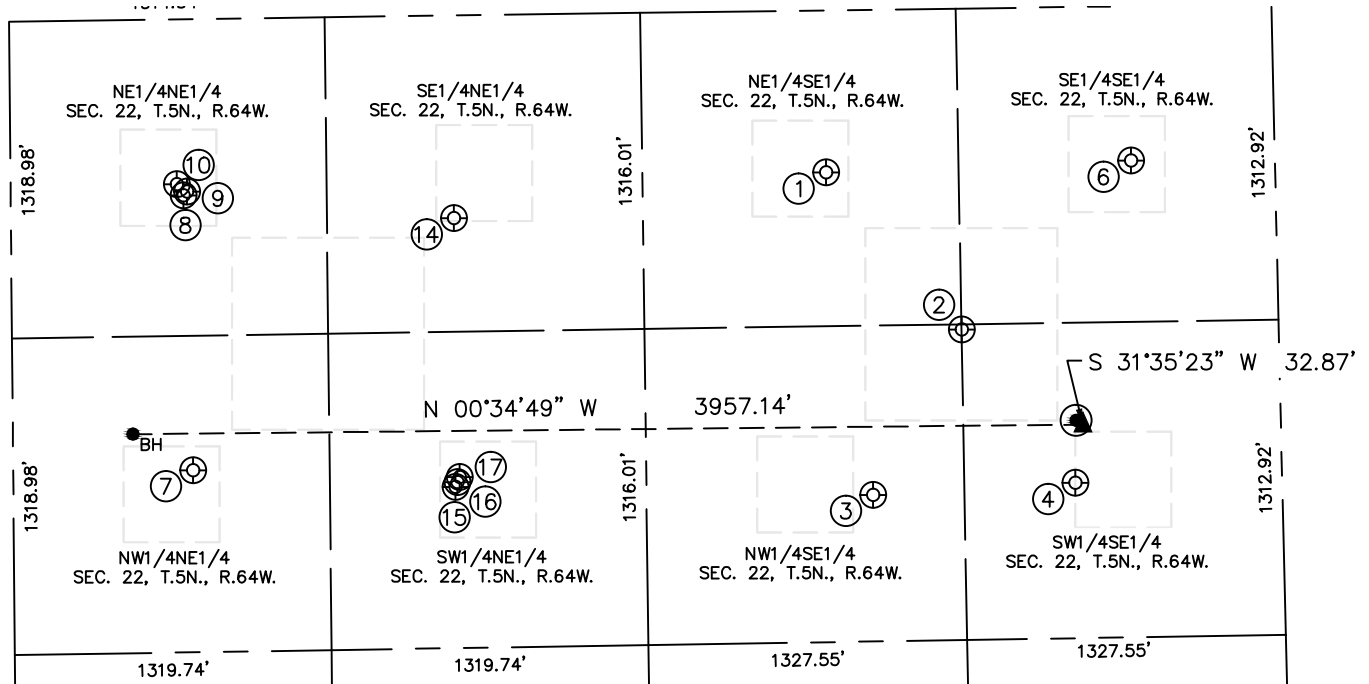


Lat40°, Inc. 6250 W. 10th Street, Unit 2, Greeley, CO 970-515-5294

SITE SKETCH

SAPPINGTON 22T-341

SECTION: 22
TOWNSHIP: 5N
RANGE: 64W
6TH. P.M.
WELD COUNTY, CO



WELL NO.	WELL NAME	SHL FOOTAGE				SHL LAT°	SHL LONG°	PDOP	ELEV (FT.)	1/4/1/4
1	EMANCIPATOR 22-9	1871	FSL	674	FEL	40.38275	-104.52881	2.0	4603	NESE
2	EMANCIPATOR B 22-23	1321	FSL	1337	FEL	40.38122	-104.53118	1.9	4601	SWSE
3	EMANCIPATOR 22-10	1705	FSL	2020	FEL	40.38226	-104.53363	1.7	4604	NWSE
4	EMANCIPATOR 22-15	861	FSL	1981	FEL	40.37994	-104.53349	1.6	4603	SWSE
6	EMANCIPATOR 22-16	599	FSL	642	FEL	40.37927	-104.52868	1.5	4600	SESE
7	TROY 1	749	FNL	1878	FEL	40.39003	-104.53315	1.6	4575	NWNE
8	DOUGHMAN 22RD	720	FNL	734	FEL	40.39010	-104.52905	1.6	4574	NENE
9	DOUGHMAN 22VD	735	FNL	718	FEL	40.39006	-104.52899	1.6	4574	NENE
10	LUCAS 1	692	FNL	686	FEL	40.39018	-104.52888	1.7	4573	NENE
14	P & H 22-42	1845	FNL	843	FEL	40.38702	-104.52943	2.7	4580	SENE
15	P & H 22CD	1842	FNL	1964	FEL	40.38703	-104.53345	3.9	4604	SWNE
16	P & H 22SD	1850	FNL	1943	FEL	40.38700	-104.53337	3.9	4604	SWNE
17	P & H 22-32	1860	FNL	1922	FEL	40.38698	-104.53330	3.8	4603	SWNE

DATE: 4/8/2015
PROJECT#: 2014077