



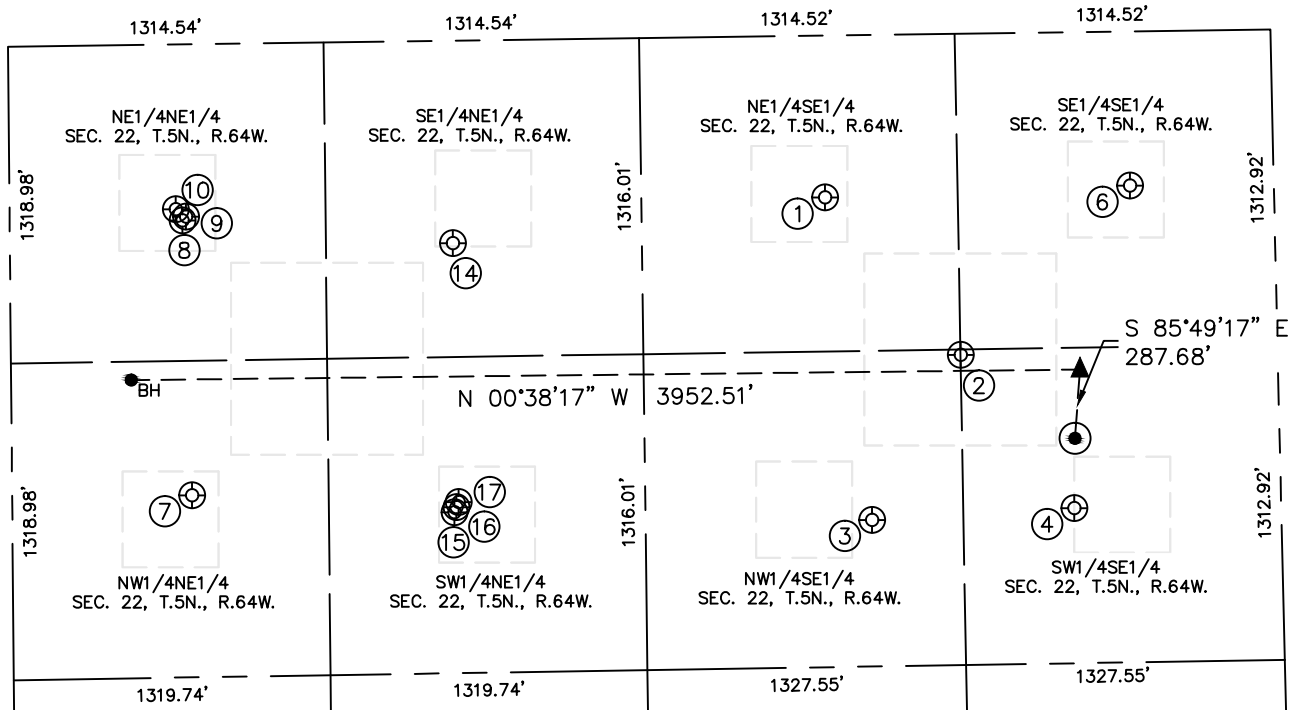


Lat40°, Inc. 6250 W. 10th Street, Unit 2, Greeley, CO 970-515-5294

SITE SKETCH

SAPPINGTON 22T-201

SECTION: 22
TOWNSHIP: 5N
RANGE: 64W
6TH. P.M.
WELD COUNTY, CO



| WELL NO. | WELL NAME | SHL FOOTAGE | | | | SHL LAT° | SHL LONG° | PDOP | ELEV (FT.) | 1/4/1/4 |
|----------|---------------------|-------------|-----|------|-----|----------|------------|------|------------|---------|
| 1 | EMANCIPATOR 22-9 | 1871 | FSL | 674 | FEL | 40.38275 | -104.52881 | 2.0 | 4603 | NESE |
| 2 | EMANCIPATOR B 22-23 | 1321 | FSL | 1337 | FEL | 40.38122 | -104.53118 | 1.9 | 4601 | SWSE |
| 3 | EMANCIPATOR 22-10 | 1705 | FSL | 2020 | FEL | 40.38226 | -104.53363 | 1.7 | 4604 | NWSE |
| 4 | EMANCIPATOR 22-15 | 861 | FSL | 1981 | FEL | 40.37994 | -104.53349 | 1.6 | 4603 | SWSE |
| 6 | EMANCIPATOR 22-16 | 599 | FSL | 642 | FEL | 40.37927 | -104.52868 | 1.5 | 4600 | SESE |
| 7 | TROY 1 | 749 | FNL | 1878 | FEL | 40.39003 | -104.53315 | 1.6 | 4575 | NWNE |
| 8 | DOUGHMAN 22RD | 720 | FNL | 734 | FEL | 40.39010 | -104.52905 | 1.6 | 4574 | NENE |
| 9 | DOUGHMAN 22VD | 735 | FNL | 718 | FEL | 40.39006 | -104.52899 | 1.6 | 4574 | NENE |
| 10 | LUCAS 1 | 692 | FNL | 686 | FEL | 40.39018 | -104.52888 | 1.7 | 4573 | NENE |
| 14 | P & H 22-42 | 1845 | FNL | 843 | FEL | 40.38702 | -104.52943 | 2.7 | 4580 | SENE |
| 15 | P & H 22CD | 1842 | FNL | 1964 | FEL | 40.38703 | -104.53345 | 3.9 | 4604 | SWNE |
| 16 | P & H 22SD | 1850 | FNL | 1943 | FEL | 40.38700 | -104.53337 | 3.9 | 4604 | SWNE |
| 17 | P & H 22-32 | 1860 | FNL | 1922 | FEL | 40.38698 | -104.53330 | 3.8 | 4603 | SWNE |

DATE: 4/8/2015
PROJECT#: 2014077