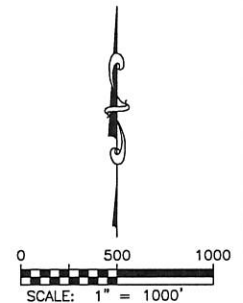
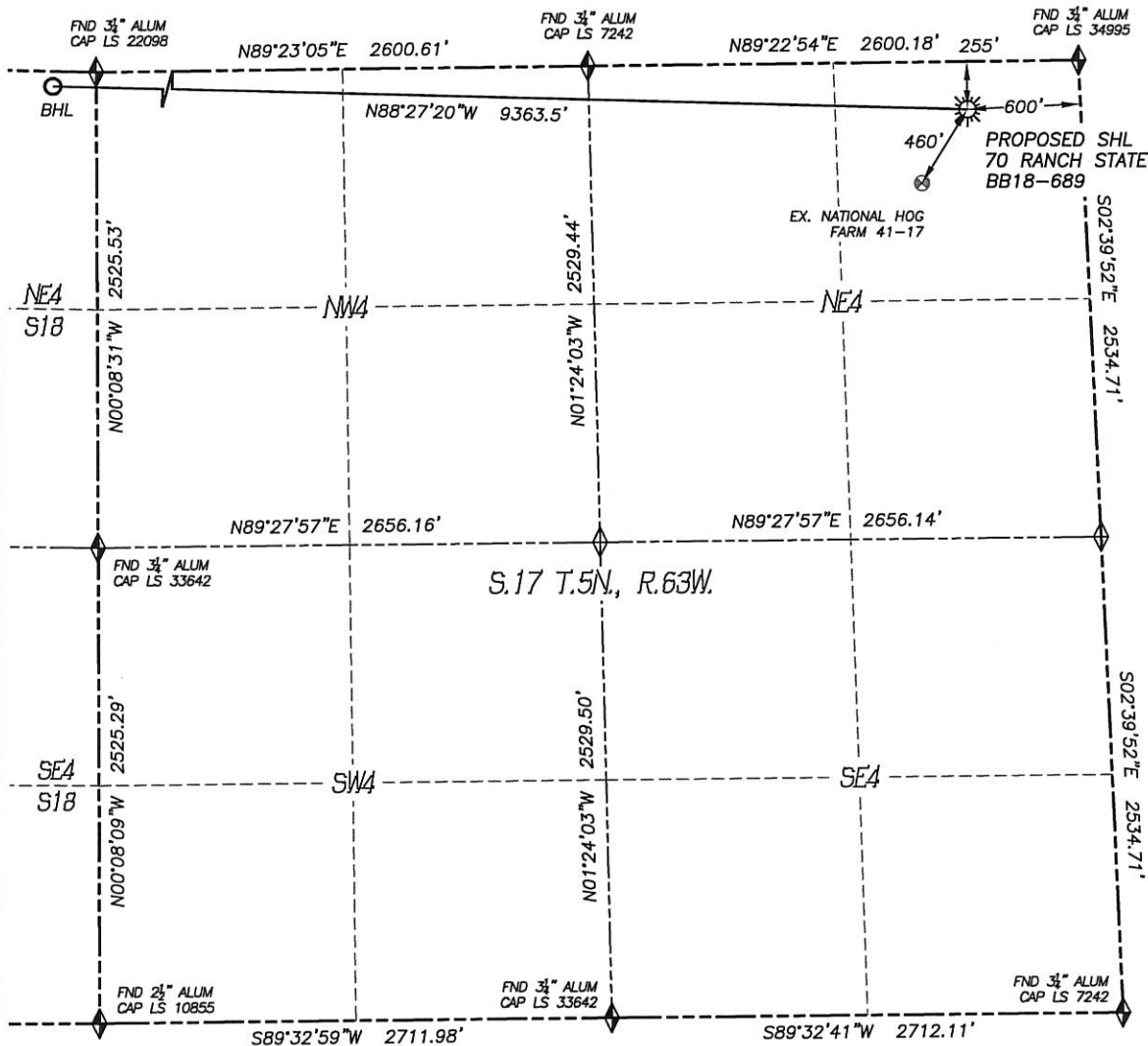


# WELL LOCATION CERTIFICATE

## 70 RANCH STATE BB18-689

SECTION: 17  
TOWNSHIP: 5N  
RANGE: 63W



### LEGEND

- ◆ FOUND MONUMENT AS DESCRIBED
- ☀ PROPOSED WELL
- EXISTING WELL
- BOTTOM HOLE
- ABANDONED WELL
- ◆ CALCULATED POSITION

IN ACCORDANCE WITH A REQUEST FROM CODY BALL OF NOBLE ENERGY INC., DALEY LAND SURVEYING, INC. HAS DETERMINED THE SURFACE LOCATION OF THE 70 RANCH STATE BB18-689 WELL TO BE 255' FNL, 600' FEL, AS MEASURED AT 90 (90) DEGREES FROM THE SECTION LINES OF SECTION 17, TOWNSHIP 5 NORTH, RANGE 63 WEST, AND THE BOTTOM HOLE LOCATION TO BE 66' FNL, 535' FWL, AS MEASURED AT NINETY (90) DEGREES FROM THE SECTION LINES OF SECTION 18, TOWNSHIP 5 NORTH, RANGE 63 WEST, OF THE 6TH PRINCIPAL MERIDIAN, WELD COUNTY, COLORADO.

I HEREBY STATE THAT THIS WELL LOCATION CERTIFICATE WAS PREPARED BY ME OR UNDER MY DIRECT SUPERVISION, THAT THE WORK WAS COMPLETED ON 11/4/2014 FOR AND ON BEHALF OF NOBLE ENERGY, INC., AND THAT THIS MAP DOES NOT REPRESENT A BOUNDARY SURVEY, IT IS NOT A LAND SURVEY PLAT OR AN IMPROVEMENT SURVEY PLAT AND IT IS NOT TO BE RELIED UPON FOR THE ESTABLISHMENT OF FENCE, BUILDING OR OTHER FUTURE IMPROVEMENT LINES.

### NOTES:

- 1) BEARINGS FOR THIS MAP ARE ASSUMED AND BASED UPON GPS OBSERVATIONS MADE BETWEEN MONUMENTS LOCATED AT THE SOUTHEAST CORNER AND SOUTH QUARTER CORNER OF SECTION 17, T.5N., R.63W.
- 2) HORIZONTAL DATUM IS NAD83.
- 3) VERTICAL DATUM IS NAVD88 AND ORIGINATES FROM THE LOCAL C.O.R.S. NETWORK, UTILIZING THE GEOID12A MODEL.
- 4) SEE LOCATION DRAWING FOR VISIBLE IMPROVEMENTS WITHIN 500' OF PROPOSED DISTURBED AREA.
- 5) SURFACE USE: RANGE LAND.
- 6) INST. OPERATOR: TREVOR DALEY.
- 7) NEAREST WELL: 460'± SW - NATIONAL HOG FARM 41-17

### NEAREST CULTURAL ITEMS:

- |                                |         |
|--------------------------------|---------|
| 1) BUILDING:                   | 5280'±  |
| 2) BUILDING UNIT:              | 5280'±  |
| 3) HIGH OCC. BLD. UNIT:        | 5280'±  |
| 4) DES. OUTSIDE ACTIVITY AREA: | 5280'±  |
| 5) PUBLIC ROAD:                | 5280'±  |
| 6) ABOVE GROUND UTILITY:       | 5280'±  |
| 7) RAILROAD:                   | 5280'±  |
| 8) PROPERTY LINE:              | 255'± N |

### NAD 83 LATITUDE AND LONGITUDE

SURFACE LOCATION:		BOTTOM HOLE:	
LATITUDE:	N40.40524°	LATITUDE:	N40.40594°
LONGITUDE:	W104.45361°	LONGITUDE:	W104.48721°
ELEV:	4697'		
PDOP:	1.2		
QTR/QTR:	NE4/NE4		



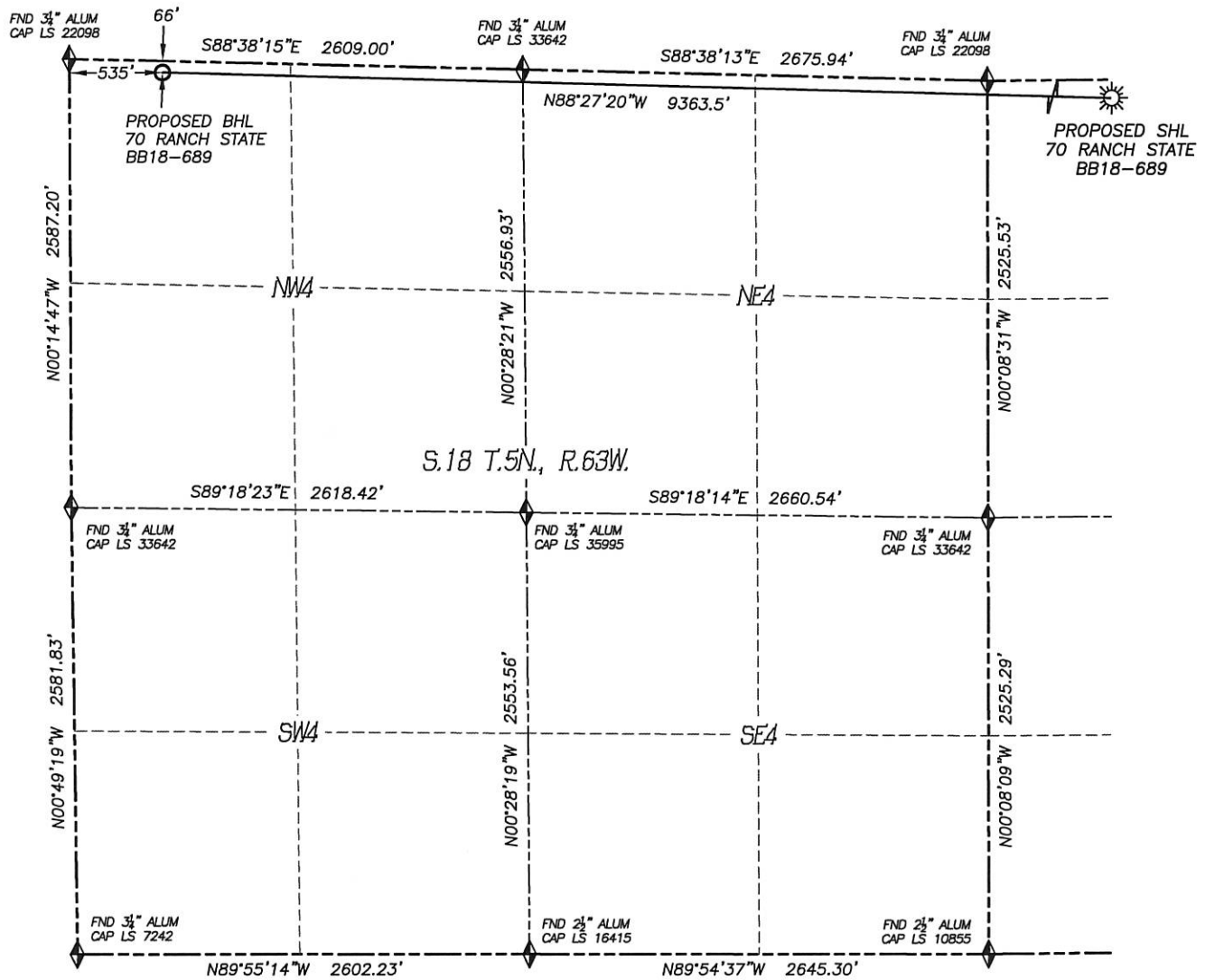
FOR AND ON BEHALF OF  
DALEY LAND SURVEYING, INC.,  
Robert Daley, PLS 35597

SHEET 1 OF 2

# WELL LOCATION CERTIFICATE

## 70 RANCH STATE BB18-689

SECTION: 17  
TOWNSHIP: 5N  
RANGE: 63W



### LEGEND

- ◆ FOUND MONUMENT AS DESCRIBED
- ☀ PROPOSED WELL
- ⊙ EXISTING WELL
- BOTTOM HOLE
- ⊘ ABANDONED WELL
- ◆ CALCULATED POSITION

