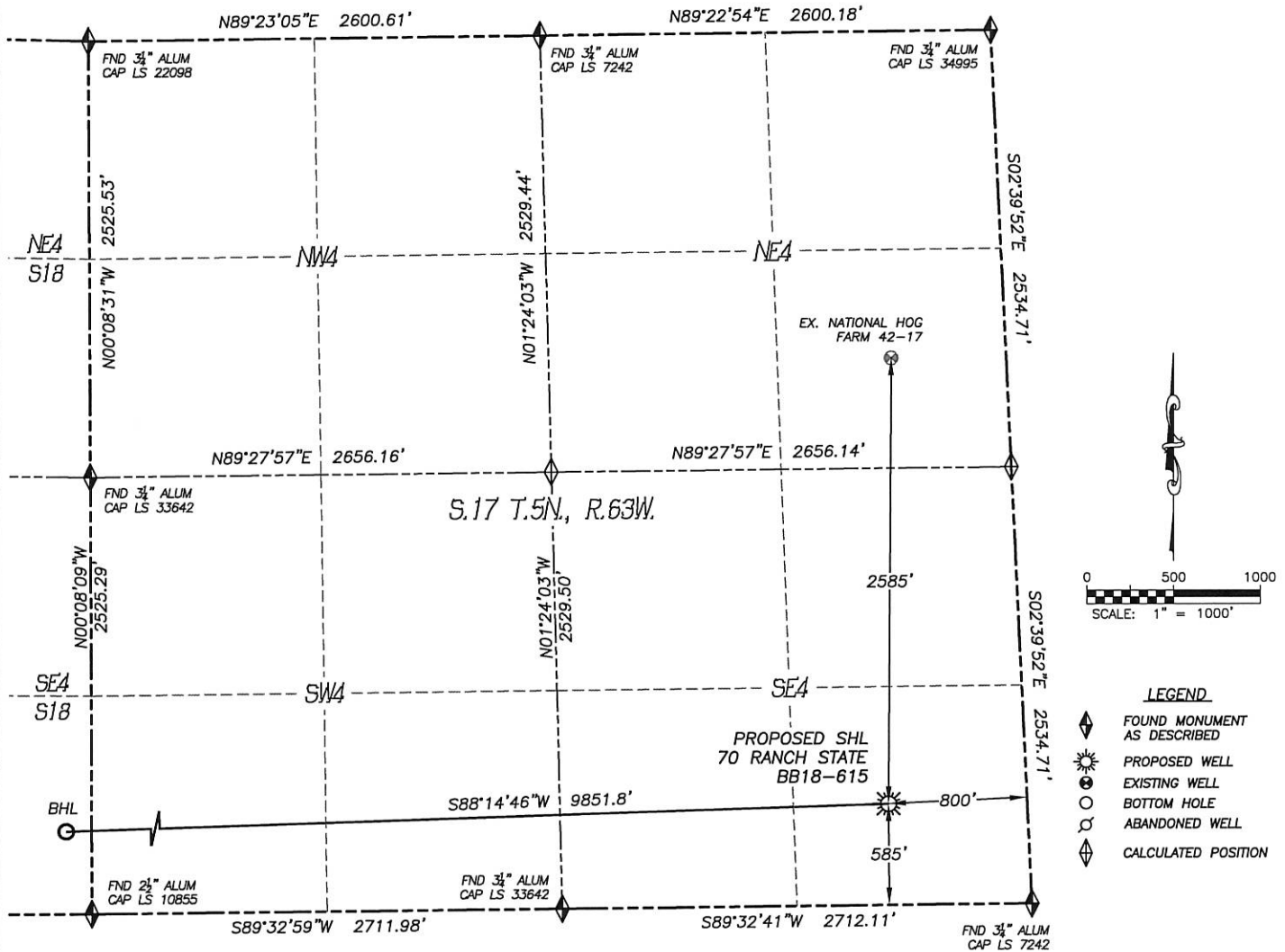


WELL LOCATION CERTIFICATE

70 RANCH STATE BB18-615

SECTION: 17
TOWNSHIP: 5N
RANGE: 63W



IN ACCORDANCE WITH A REQUEST FROM CODY BALL OF NOBLE ENERGY INC., DALEY LAND SURVEYING, INC. HAS DETERMINED THE SURFACE LOCATION OF THE 70 RANCH STATE BB18-615 WELL TO BE 585' FSL, 800' FEL, AS MEASURED AT 90 (90) DEGREES FROM THE SECTION LINES OF SECTION 17, TOWNSHIP 5 NORTH, RANGE 63 WEST, AND THE BOTTOM HOLE LOCATION TO BE 312' FSL, 1' FWL, AS MEASURED AT NINETY (90) DEGREES FROM THE SECTION LINES OF SECTION 18, TOWNSHIP 5 NORTH, RANGE 63 WEST, OF THE 6TH PRINCIPAL MERIDIAN, WELD COUNTY, COLORADO.

I HEREBY STATE THAT THIS WELL LOCATION CERTIFICATE WAS PREPARED BY ME OR UNDER MY DIRECT SUPERVISION, THAT THE WORK WAS COMPLETED ON 11/24/2014 FOR AND ON BEHALF OF NOBLE ENERGY, INC., AND THAT THIS MAP DOES NOT REPRESENT A BOUNDARY SURVEY, IT IS NOT A LAND SURVEY PLAT OR AN IMPROVEMENT SURVEY PLAT AND IT IS NOT TO BE RELIED UPON FOR THE ESTABLISHMENT OF FENCE, BUILDING OR OTHER FUTURE IMPROVEMENT LINES.

NOTES:

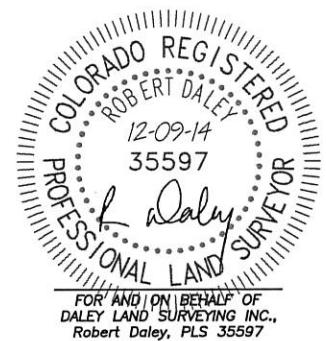
- 1) BEARINGS FOR THIS MAP ARE ASSUMED AND BASED UPON GPS OBSERVATIONS MADE BETWEEN MONUMENTS LOCATED AT THE SOUTHEAST CORNER AND SOUTH QUARTER CORNER OF SECTION 17, T.5N., R.63W.
- 2) HORIZONTAL DATUM IS NAD83.
- 3) VERTICAL DATUM IS NAVD88 AND ORIGINATES FROM THE LOCAL C.O.R.S. NETWORK, UTILIZING THE GEOID12A MODEL.
- 4) SEE LOCATION DRAWING FOR VISIBLE IMPROVEMENTS WITHIN 500' OF PROPOSED DISTURBED AREA.
- 5) SURFACE USE: RANGE LAND.
- 6) INST. OPERATOR: TREVOR DALEY.
- 7) NEAREST WELL: 2585'± N. - NATIONAL HOG FARM 42-17

NEAREST CULTURAL ITEMS:

- 1) BUILDING: 4856'± SW
- 2) BUILDING UNIT: 5280'±
- 3) HIGH OCC. BLD. UNIT: 5280'±
- 4) DES. OUTSIDE ACTIVITY AREA: 5280'±
- 5) PUBLIC ROAD: 5280'±
- 6) ABOVE GROUND UTILITY: 4728'± SW
- 7) RAILROAD: 5280'±
- 8) PROPERTY LINE: 585'± S

NAD 83 LATITUDE AND LONGITUDE

SURFACE LOCATION:		BOTTOM HOLE:	
LATITUDE:	N40.39365°	LATITUDE:	N40.39283°
LONGITUDE:	W104.45363°	LONGITUDE:	W104.48898°
ELEV:	4646'		
PDOP:	1.2		
QTR/QTR:	SE4/SE4		



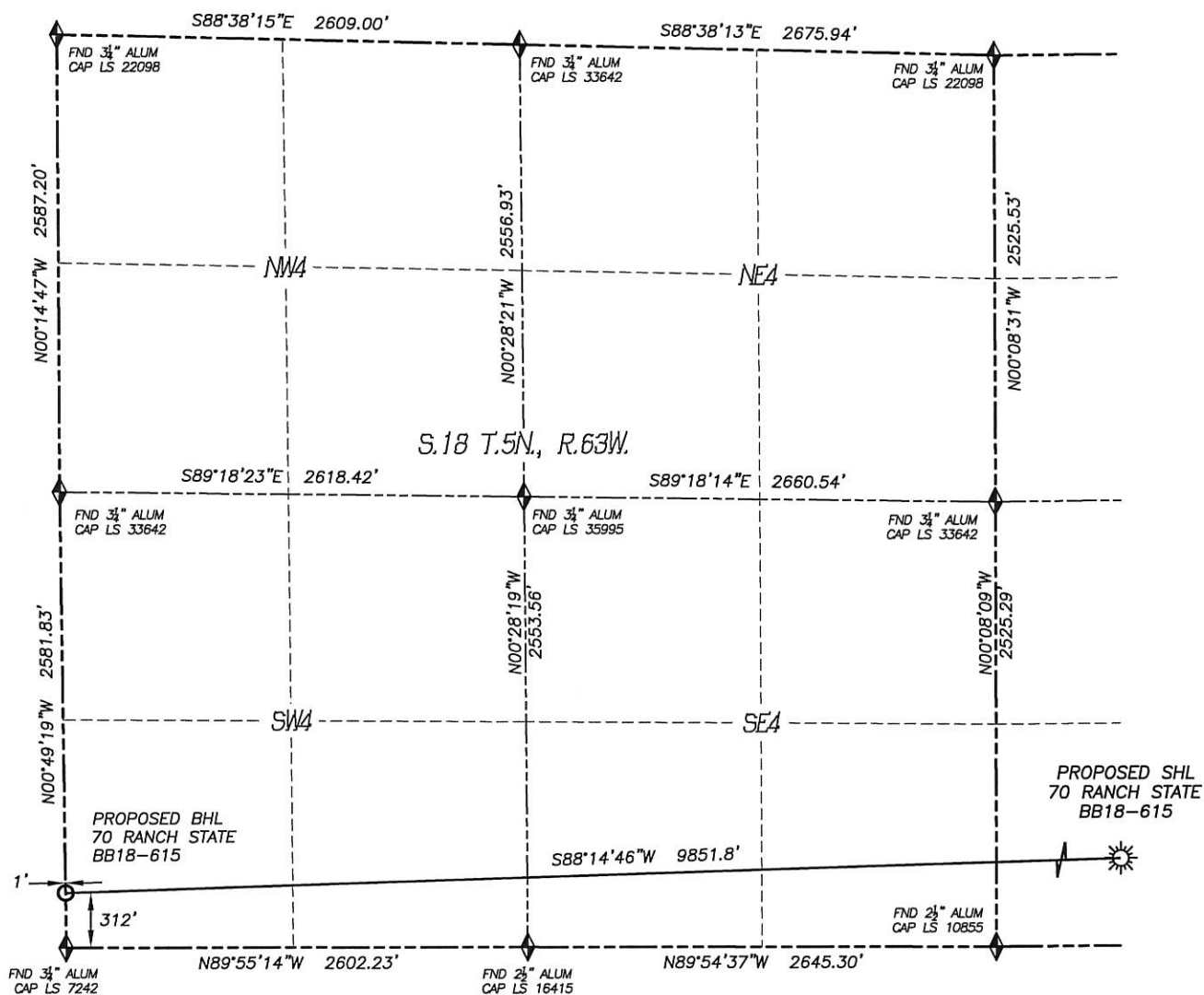
SHEET 1 OF 2

Drawing Date: 12/09/14







303 953 9841

WELL LOCATION CERTIFICATE
70 RANCH STATE BB18-615

SECTION: 17
TOWNSHIP: 5N
RANGE: 63W



LEGEND

- | | |
|---|--------------------------------|
|  | FOUND MONUMENT
AS DESCRIBED |
|  | PROPOSED WELL |
|  | EXISTING WELL |
|  | BOTTOM HOLE |
|  | ABANDONED WELL |
|  | CALCULATED POSITION |

