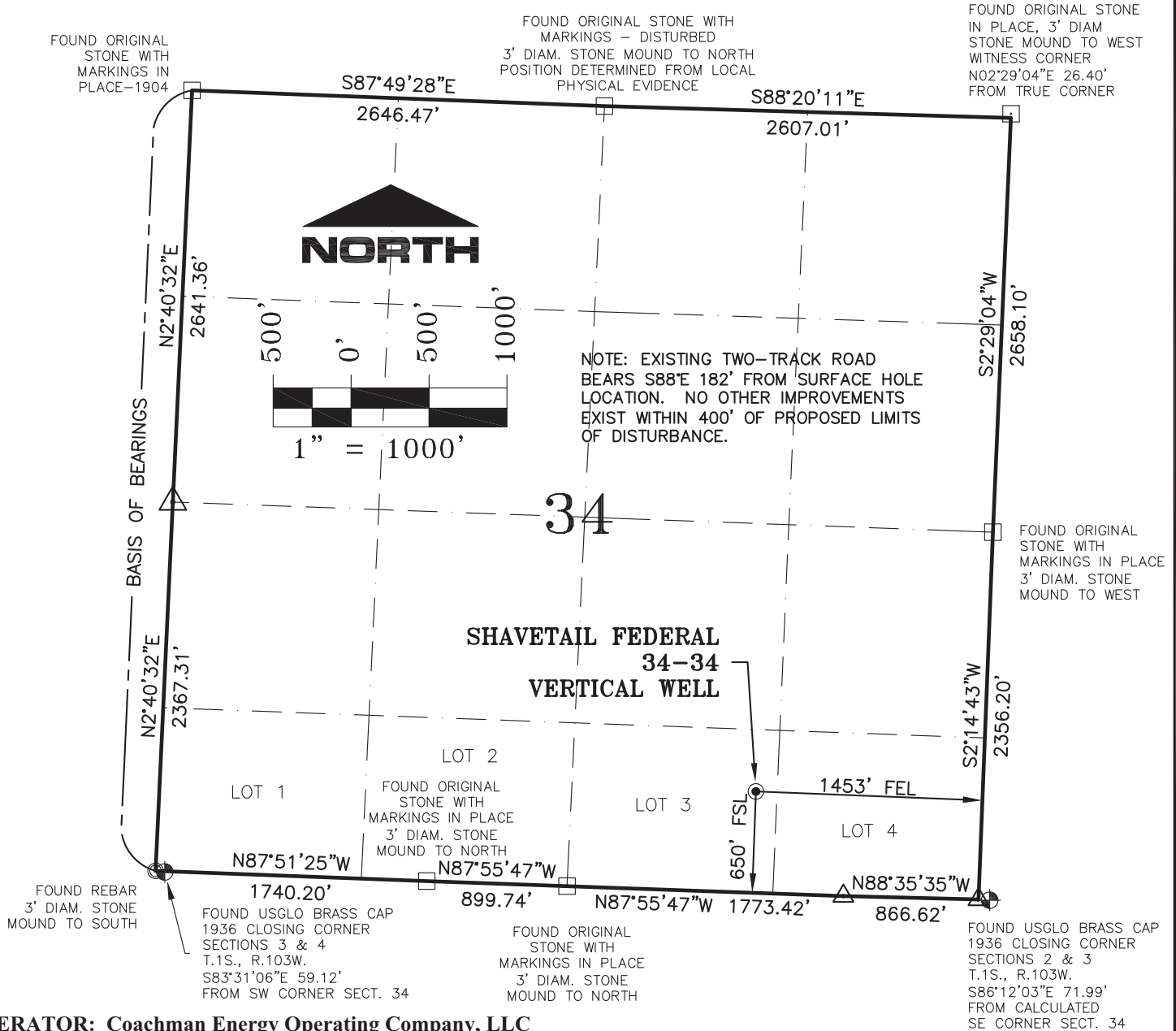


SECTION 34, T1N, R103W, 6th P.M.



OPERATOR: Coachman Energy Operating Company, LLC

NOTES:

1. GEODETIC POSITIONS ARE SHOWN IN DECIMAL DEGREES.
2. UNITS OF LINEAR MEASUREMENT: U.S. SURVEY FOOT
3. ELEVATIONS ARE BASED ON GPS OBSERVATIONS USING GEOID 09, NAVD88.
4. ALL SURFACE (SHL) AND BOTTOM (BHL) HOLE LOCATIONS ARE MEASURED AT 90° ANGLES FROM SECTION LINES.
5. BASIS OF BEARING: N02°40'32"E BETWEEN FOUND MONUMENTS AS SHOWN HEREON.
6. EXISTING GROUND ELEVATION: 5818.3'. PROPOSED PAD ELEVATION: 5816.8'.
7. GPS OPERATOR: KYLE TESKY OBSERVED AN AVERAGE PDOP OF ≤ 3.0 FOR ALL SURVEY MEASUREMENTS DEPICTED ON THIS AND SUBSEQUENT SHEETS. ALL GPS OBSERVATIONS ARE IN COMPLIANCE WITH COGCC RULE NO. 215
8. SURFACE USE: RANGELAND
9. USGS QUAD MAP: BANTY POINT

SURVEYORS STATEMENT:

I, ELWOOD BARRY GILES, BEING A REGISTERED LAND SURVEYOR IN THE STATE OF COLORADO, DO HERBY CERTIFY THAT THIS PLAT REPRESENTS A SURVEY PERFORMED BY ME OR UNDER MY DIRECT SUPERVISION FEBRUARY 7, 2011, AND IS TRUE TO THE BEST OF MY KNOWLEDGE AND BELIEF.

Elwood Barry Giles

10 FEB, 2011

ELWOOD BARRY GILES
COLORADO LS 38150

DATE

LEGEND:

△ - CALCULATED CORNER POSITION

WELL No.	SECTION LINES TIES		NAD 83 COORDINATE	
SHAVETAILE FEDERAL 34-34	FOOTAGES	FOOTAGES	LATITUDE	LONGITUDE
SURFACE & BOTTOM HOLE	650' FSL	1453' FEL	N40.00775°	W108.93846°



SGM INC.
118 W. 6th Street, Suite 200
Glenwood Springs, Colorado 81601
(970) 945-1004 (FAX 945-5948)
Meeker, Colorado (970) 878-5180

Scale: 1"=1000'

Sheet 1 of 8

SHAVETAILE FED 34-34

Well Location Plat For Coachman Energy Shavetail Fed. 34-34
Lot 3 (SW¼ SE¼) Sec. 34, T.1N., R.103W., 6th P.M., Rio Blanco County, CO

Job# 2010-112.005

Date: 2.10.12

By: reb

File: ShaveiaAPD_BM