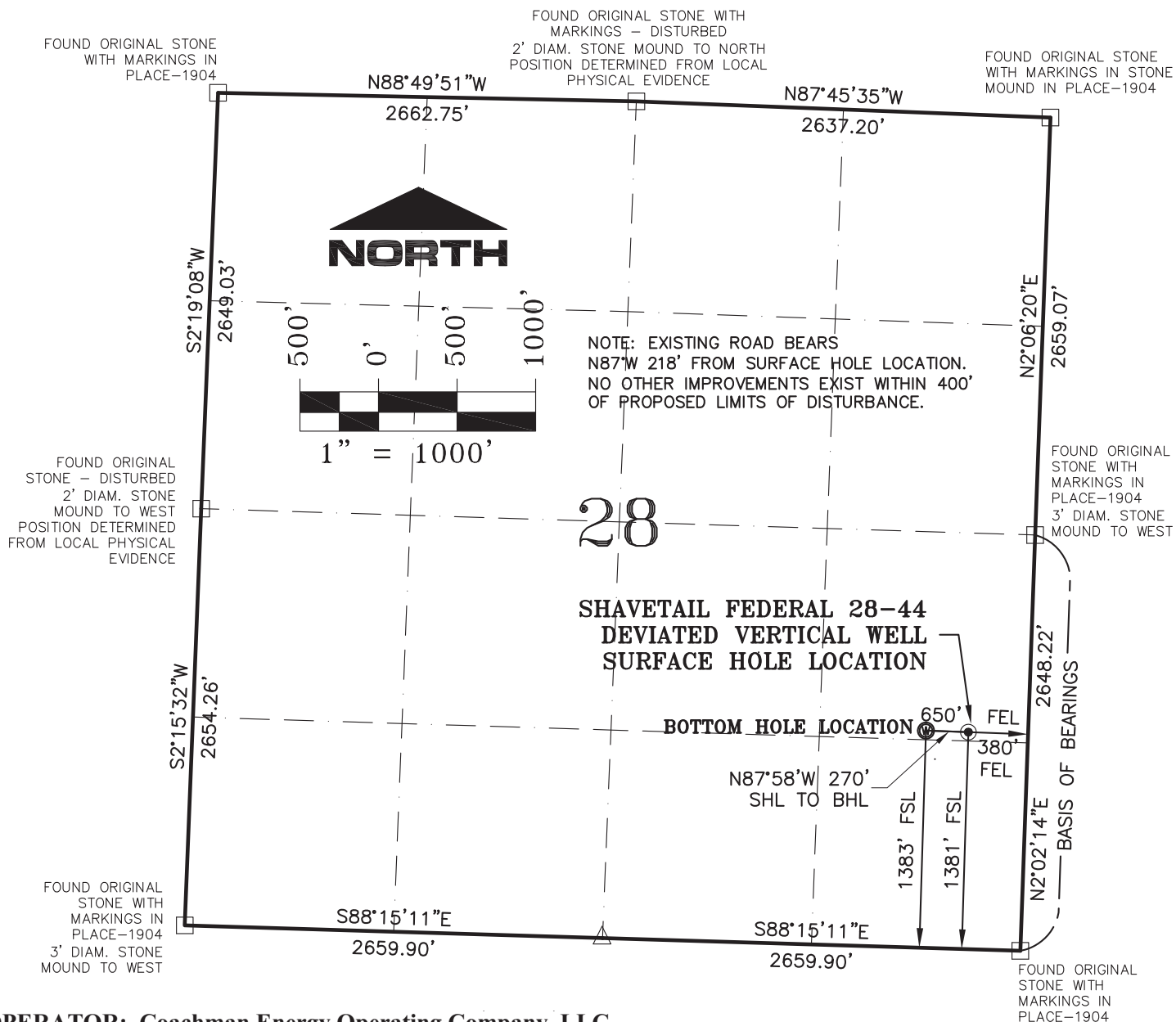


SECTION 28, T1N, R103W, 6th P.M.



OPERATOR: Coachman Energy Operating Company, LLC

NOTES:

1. GEODETIC POSITIONS ARE SHOWN IN DECIMAL DEGREES.
2. UNITS OF LINEAR MEASUREMENT: U.S. SURVEY FOOT
3. ELEVATIONS ARE BASED ON GPS OBSERVATIONS USING GEOID 09, NAVD88.
4. ALL SURFACE (SHL) AND BOTTOM (BHL) HOLE LOCATIONS ARE MEASURED AT 90° ANGLES FROM SECTION LINES.
5. BASIS OF BEARING: N02°02'14"E BETWEEN FOUND MONUMENTS AS SHOWN HEREON.
6. EXISTING GROUND ELEVATION: 5590.1'. PROPOSED PAD ELEVATION: 5590.5'.
7. GPS OPERATOR: KYLE TESKY OBSERVED AN AVERAGE PDOP OF ≤ 3.0 FOR ALL SURVEY MEASUREMENTS DEPICTED ON THIS AND SUBSEQUENT SHEETS. ALL GPS OBSERVATIONS ARE IN COMPLIANCE WITH COGCC RULE NO. 215
8. SURFACE USE: RANGELAND
9. USGS QUAD MAP: BANTY POINT

SURVEYORS STATEMENT:

I, ELWOOD BARRY GILES, BEING A REGISTERED LAND SURVEYOR IN THE STATE OF COLORADO, DO HERBY CERTIFY THAT THIS PLAN REPRESENTS A SURVEY PERFORMED BY ME OR UNDER MY DIRECT SUPERVISION FEBRUARY 7, 2012 AND IS TRUE TO THE BEST OF MY KNOWLEDGE AND BELIEF.

Elwood Barry Giles 10 FEB, 2012
ELWOOD BARRY GILES
COLORADO LS 38150

WELL No.	SECTION	LINES TIES	NAD 83 COORDINATE	
SHAVETAILE FEDERAL 28-44	FOOTAGES	FOOTAGES	LATITUDE	LONGITUDE
SURFACE HOLE LOCATION	1381' FSL	380' FEL	N40.02347°	W108.95335°
BOTTOM HOLE LOCATION	1383' FSL	650' FEL	N40.02347°	W108.95431°

LEGEND:

△ - CALCULATED CORNER POSITION



SGM INC.
118 W. 6th Street, Suite 200
Glenwood Springs, Colorado 81601
(970) 945-1004 (FAX 945-5948)
Meeker, Colorado (970) 878-5180

Scale: $1''=1000'$

Sheet 1 of 8

SHAVETAIL FED 28-44

Well Location Plat For Coachman Energy Shavetail Fed. 28-44

NE¹/₄ SE¹/₄ Sec. 28, T.1N., R.103W., 6th P.M., Rio Blanco County, CO

Job# 2010-112.005

Date: 2.10.12

By: reb

File: Shaveia/APD BM