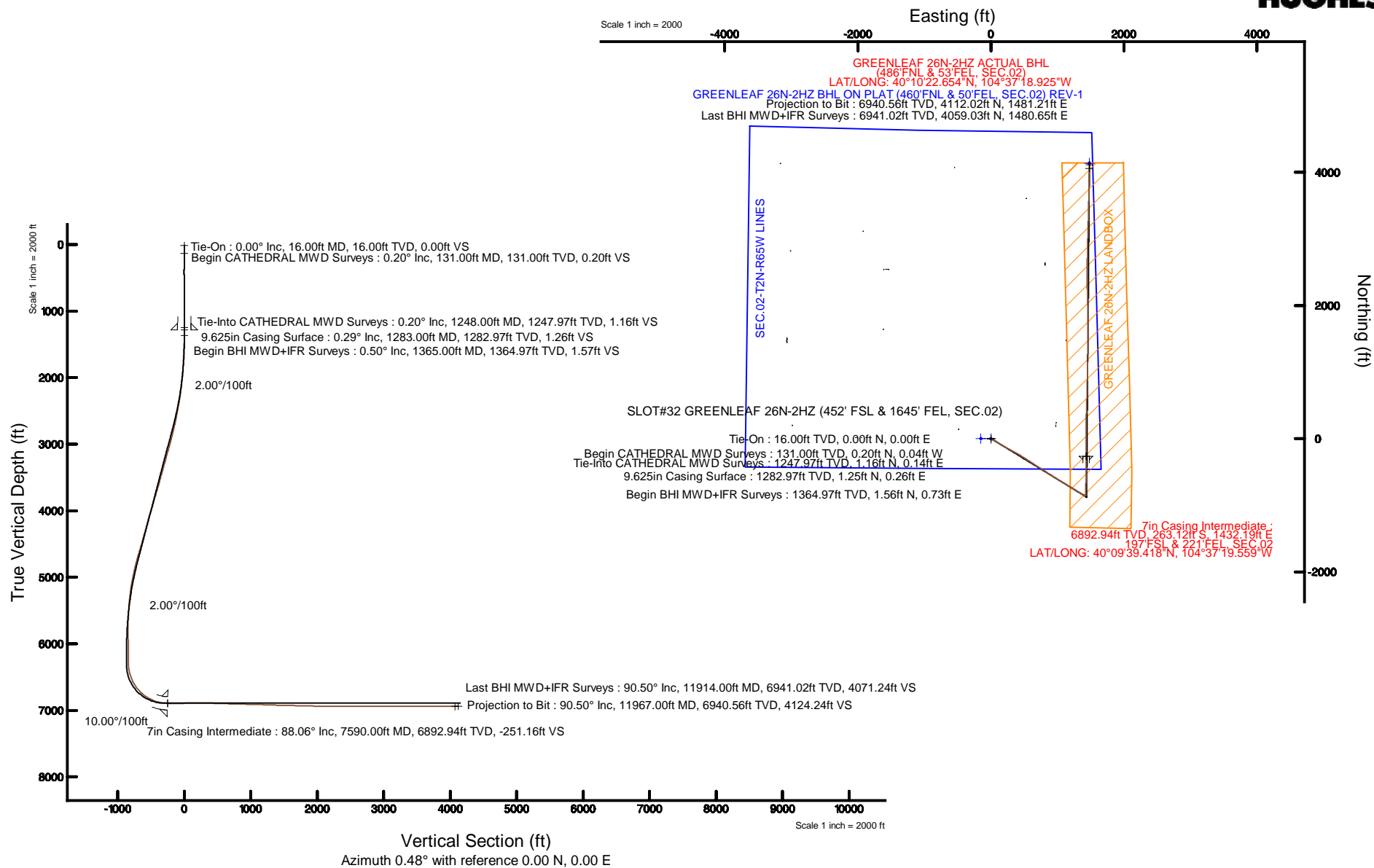


KERR-MCGEE OIL & GAS ONSHORE LP

Location: COLORADO Slot: SLOT#32 GREENLEAF 26N-2HZ (452' FSL & 1645' FEL, SEC.02)
 Field: WELD COUNTY (KERR MCGEE) Well: GREENLEAF 26N-2HZ
 Facility: SEC.02-T2N-R65W Wellbore: GREENLEAF 26N-2HZ PWB

Plot reference wellpath is GREENLEAF 26N-2HZ (REV-A.0) PWP

True vertical depths are referenced to XTREME 23 (16KB) (RKB)	Grid System: NAD83 / Lambert Colorado SP, Northern Zone (501), US feet
Measured depths are referenced to XTREME 23 (16KB) (RKB)	North Reference: True north
XTREME 23 (16KB) (RKB) to Mean Sea Level: 4862 feet	Scale: True distance
Mean Sea Level to Mud line (At Slot SLOT#32 GREENLEAF 26N-2HZ (452' FSL & 1645' FEL, SEC.02)): 0 feet	Depths are in feet
Coordinates are in feet referenced to Slot	Created by: precain on 3/10/2015



Actual Wellpath Report

GREENLEAF 26N-2HZ AWP

Page 1 of 6

REFERENCE WELLPATH IDENTIFICATION

Operator	KERR-MCGEE OIL & GAS ONSHORE LP	Slot	SLOT#32 GREENLEAF 26N-2HZ (452' FSL & 1645' FEL, SEC.02)
Area	COLORADO	Well	GREENLEAF 26N-2HZ
Field	WELD COUNTY (KERR MCGEE)	Wellbore	GREENLEAF 26N-2HZ AWB <11553>
Facility	SEC.02-T2N-R65W		

REPORT SETUP INFORMATION

Projection System	NAD83 / Lambert Colorado SP, Northern Zone (501), US feet	Software System	WellArchitect® 4.1.1
North Reference	True	User	Precain
Scale	0.999958	Report Generated	3/10/2015 at 9:21:24 AM
Convergence at slot	0.56° East	Database/Source file	WellArchitectDB/GREENLEAF_26N-2HZ_AWB__11553_.xml

WELLPATH LOCATION

	Local coordinates		Grid coordinates		Geographic coordinates	
	North[ft]	East[ft]	Easting[US ft]	Northing[US ft]	Latitude	Longitude
Slot Location	-232.42	-979.34	3243927.77	1302940.67	40°09'42.019"N	104°37'38.006"W
Facility Reference Pt			3244904.72	1303182.74	40°09'44.316"N	104°37'25.392"W
Field Reference Pt			3197771.84	1268891.29	40°04'09.600"N	104°47'36.000"W

WELLPATH DATUM

Calculation method	Minimum curvature	XTREME 23 (16'KB) (RKB) to Facility Vertical Datum	4862.00ft
Horizontal Reference Pt	Slot	XTREME 23 (16'KB) (RKB) to Mean Sea Level	4862.00ft
Vertical Reference Pt	XTREME 23 (16'KB) (RKB)	XTREME 23 (16'KB) (RKB) to Mud Line at Slot (SLOT#32 GREENLEAF 26N-2HZ (452' FSL & 1645' FEL, SEC.02))	4862.00ft
MD Reference Pt	XTREME 23 (16'KB) (RKB)	Section Origin	N 0.00, E 0.00 ft
Field Vertical Reference	Mean Sea Level	Section Azimuth	0.48°

Actual Wellpath Report

GREENLEAF 26N-2HZ AWP

Page 2 of 6

REFERENCE WELLPATH IDENTIFICATION

Operator	KERR-MCGEE OIL & GAS ONSHORE LP	Slot	SLOT#32 GREENLEAF 26N-2HZ (452' FSL & 1645' FEL, SEC.02)
Area	COLORADO	Well	GREENLEAF 26N-2HZ
Field	WELD COUNTY (KERR MCGEE)	Wellbore	GREENLEAF 26N-2HZ AWB <11553>
Facility	SEC.02-T2N-R65W		

WELLPATH DATA (140 stations) † = interpolated/extrapolated station

MD [ft]	Inclination [°]	Azimuth [°]	TVD [ft]	Vert Sect [ft]	North [ft]	East [ft]	Latitude	Longitude	DLS [°/100ft]	Comments
0.00†	0.000	348.800	0.00	0.00	0.00	0.00	40°09'42.019"N	104°37'38.006"W	0.00	
16.00	0.000	348.800	16.00	0.00	0.00	0.00	40°09'42.019"N	104°37'38.006"W	0.00	Tie-On
131.00	0.200	348.800	131.00	0.20	0.20	-0.04	40°09'42.021"N	104°37'38.007"W	0.17	Begin CATHEDRAL MWD Surveys
210.00	0.500	200.900	210.00	0.01	0.01	-0.19	40°09'42.019"N	104°37'38.008"W	0.86	
289.00	0.200	61.000	289.00	-0.25	-0.25	-0.19	40°09'42.017"N	104°37'38.008"W	0.84	
369.00	0.500	218.500	369.00	-0.45	-0.45	-0.29	40°09'42.015"N	104°37'38.010"W	0.86	
449.00	0.700	297.300	448.99	-0.51	-0.50	-0.94	40°09'42.014"N	104°37'38.018"W	0.97	
529.00	0.200	341.600	528.99	-0.15	-0.14	-1.42	40°09'42.018"N	104°37'38.024"W	0.72	
609.00	0.100	6.500	608.99	0.05	0.06	-1.45	40°09'42.020"N	104°37'38.025"W	0.15	
689.00	0.700	313.000	688.99	0.45	0.46	-1.80	40°09'42.024"N	104°37'38.029"W	0.81	
769.00	0.600	287.700	768.98	0.90	0.92	-2.56	40°09'42.028"N	104°37'38.039"W	0.38	
849.00	0.400	46.000	848.98	1.22	1.24	-2.76	40°09'42.031"N	104°37'38.042"W	1.08	
929.00	0.900	100.200	928.98	1.31	1.33	-1.94	40°09'42.032"N	104°37'38.031"W	0.93	
1009.00	0.100	44.700	1008.97	1.25	1.26	-1.27	40°09'42.031"N	104°37'38.022"W	1.06	
1089.00	0.600	71.500	1088.97	1.44	1.45	-0.82	40°09'42.033"N	104°37'38.017"W	0.64	
1169.00	0.500	137.800	1168.97	1.32	1.32	-0.19	40°09'42.032"N	104°37'38.008"W	0.76	
1248.00	0.200	47.600	1247.97	1.16	1.16	0.14	40°09'42.030"N	104°37'38.004"W	0.68	Tie-Into CATHEDRAL MWD Surveys
1365.00	0.500	58.400	1364.97	1.57	1.56	0.73	40°09'42.034"N	104°37'37.997"W	0.26	Begin BHI MWD+IFR Surveys
1457.00	2.000	142.400	1456.95	0.52	0.50	2.05	40°09'42.024"N	104°37'37.980"W	2.18	
1549.00	3.600	127.600	1548.83	-2.49	-2.53	5.32	40°09'41.994"N	104°37'37.938"W	1.89	
1646.00	4.800	125.800	1645.57	-6.67	-6.76	11.02	40°09'41.952"N	104°37'37.864"W	1.24	
1737.00	6.100	118.600	1736.16	-11.15	-11.31	18.36	40°09'41.907"N	104°37'37.770"W	1.61	
1829.00	8.000	115.800	1827.46	-16.20	-16.43	28.41	40°09'41.857"N	104°37'37.640"W	2.10	
1922.00	8.600	120.000	1919.49	-22.39	-22.73	40.26	40°09'41.794"N	104°37'37.487"W	0.92	
2016.00	10.000	119.800	2012.25	-29.85	-30.30	53.43	40°09'41.720"N	104°37'37.318"W	1.49	
2108.00	12.600	122.800	2102.46	-39.13	-39.70	68.80	40°09'41.627"N	104°37'37.120"W	2.90	
2201.00	14.700	121.800	2192.83	-50.69	-51.42	87.36	40°09'41.511"N	104°37'36.881"W	2.27	
2294.00	16.200	119.400	2282.46	-63.10	-64.01	108.69	40°09'41.386"N	104°37'36.606"W	1.75	
2386.00	19.000	121.200	2370.15	-76.96	-78.07	132.68	40°09'41.248"N	104°37'36.297"W	3.10	
2480.00	20.000	120.600	2458.76	-92.84	-94.18	159.61	40°09'41.088"N	104°37'35.950"W	1.08	
2571.00	21.100	120.000	2543.96	-108.72	-110.29	187.19	40°09'40.929"N	104°37'35.595"W	1.23	
2664.00	23.000	119.400	2630.16	-125.76	-127.58	217.52	40°09'40.758"N	104°37'35.204"W	2.06	
2756.00	25.700	118.400	2713.97	-143.80	-145.89	250.73	40°09'40.577"N	104°37'34.777"W	2.97	
2849.00	27.500	117.700	2797.12	-163.06	-165.47	287.48	40°09'40.384"N	104°37'34.303"W	1.96	
2934.00	29.900	118.400	2871.67	-181.96	-184.67	323.50	40°09'40.194"N	104°37'33.839"W	2.85	
3019.00	28.900	117.600	2945.73	-201.25	-204.26	360.34	40°09'40.000"N	104°37'33.365"W	1.26	
3105.00	29.200	120.000	3020.91	-221.06	-224.38	396.92	40°09'39.802"N	104°37'32.894"W	1.40	
3190.00	29.000	122.500	3095.18	-242.20	-245.82	432.26	40°09'39.590"N	104°37'32.439"W	1.45	
3275.00	27.400	121.700	3170.09	-263.27	-267.17	466.28	40°09'39.379"N	104°37'32.000"W	1.93	
3360.00	27.300	122.400	3245.59	-283.71	-287.89	499.38	40°09'39.174"N	104°37'31.574"W	0.40	
3446.00	27.900	122.600	3321.80	-304.84	-309.30	532.98	40°09'38.962"N	104°37'31.141"W	0.71	
3531.00	27.200	122.700	3397.16	-325.77	-330.51	566.08	40°09'38.753"N	104°37'30.715"W	0.83	
3616.00	27.600	122.500	3472.63	-346.57	-351.58	599.04	40°09'38.545"N	104°37'30.290"W	0.48	
3703.00	27.100	122.000	3549.90	-367.62	-372.91	632.84	40°09'38.334"N	104°37'29.855"W	0.63	
3789.00	29.100	123.500	3625.76	-389.26	-394.84	666.90	40°09'38.117"N	104°37'29.416"W	2.47	

Actual Wellpath Report

GREENLEAF 26N-2HZ AWP

Page 3 of 6

REFERENCE WELLPATH IDENTIFICATION

Operator	KERR-MCGEE OIL & GAS ONSHORE LP	Slot	SLOT#32 GREENLEAF 26N-2HZ (452' FSL & 1645' FEL, SEC.02)
Area	COLORADO	Well	GREENLEAF 26N-2HZ
Field	WELD COUNTY (KERR MCGEE)	Wellbore	GREENLEAF 26N-2HZ AWB <11553>
Facility	SEC.02-T2N-R65W		

WELLPATH DATA (140 stations) † = interpolated/extrapolated station

MD [ft]	Inclination [°]	Azimuth [°]	TVD [ft]	Vert Sect [ft]	North [ft]	East [ft]	Latitude	Longitude	DLS [°/100ft]	Comments
3874.00	28.600	123.000	3700.21	-411.46	-417.33	701.19	40°09'37.895"N	104°37'28.975"W	0.65	
3961.00	28.800	122.200	3776.52	-433.68	-439.83	736.39	40°09'37.672"N	104°37'28.521"W	0.50	
4046.00	28.700	121.400	3851.05	-454.93	-461.38	771.14	40°09'37.460"N	104°37'28.074"W	0.47	
4131.00	28.200	122.000	3925.78	-475.92	-482.65	805.59	40°09'37.249"N	104°37'27.630"W	0.68	
4217.00	29.200	125.600	4001.22	-498.61	-505.64	839.88	40°09'37.022"N	104°37'27.188"W	2.32	
4302.00	29.500	126.100	4075.31	-522.73	-530.04	873.65	40°09'36.781"N	104°37'26.754"W	0.46	
4387.00	29.100	120.500	4149.45	-545.27	-552.86	908.38	40°09'36.555"N	104°37'26.306"W	3.26	
4474.00	27.200	120.600	4226.16	-565.83	-573.72	943.72	40°09'36.349"N	104°37'25.851"W	2.18	
4559.00	27.700	120.100	4301.59	-585.34	-593.52	977.54	40°09'36.154"N	104°37'25.416"W	0.65	
4644.00	30.300	121.700	4375.92	-606.23	-614.70	1012.88	40°09'35.944"N	104°37'24.960"W	3.19	
4732.00	28.300	120.100	4452.66	-628.05	-636.83	1049.82	40°09'35.726"N	104°37'24.485"W	2.44	
4819.00	28.900	121.600	4529.05	-649.11	-658.19	1085.57	40°09'35.515"N	104°37'24.024"W	1.08	
4904.00	29.800	123.600	4603.14	-671.27	-680.64	1120.65	40°09'35.293"N	104°37'23.572"W	1.57	
4991.00	29.700	122.700	4678.67	-694.57	-704.25	1156.80	40°09'35.059"N	104°37'23.107"W	0.53	
5076.00	27.300	121.500	4753.37	-715.85	-725.81	1191.14	40°09'34.846"N	104°37'22.664"W	2.90	
5163.00	25.600	118.300	4831.26	-734.90	-745.15	1224.71	40°09'34.655"N	104°37'22.232"W	2.55	
5248.00	24.100	120.900	4908.39	-752.26	-762.77	1255.77	40°09'34.481"N	104°37'21.832"W	2.18	
5333.00	22.400	122.500	4986.49	-769.64	-780.38	1284.32	40°09'34.307"N	104°37'21.464"W	2.13	
5418.00	19.900	121.600	5065.75	-785.71	-796.67	1310.31	40°09'34.146"N	104°37'21.130"W	2.97	
5503.00	16.600	120.700	5146.47	-799.30	-810.45	1333.07	40°09'34.010"N	104°37'20.836"W	3.90	
5589.00	13.400	120.600	5229.53	-810.49	-821.80	1352.22	40°09'33.898"N	104°37'20.590"W	3.72	
5674.00	11.900	119.500	5312.46	-819.68	-831.13	1368.32	40°09'33.805"N	104°37'20.382"W	1.79	
5761.00	10.000	119.000	5397.87	-827.64	-839.21	1382.74	40°09'33.726"N	104°37'20.197"W	2.19	
5846.00	8.300	115.700	5481.79	-833.78	-845.45	1394.72	40°09'33.664"N	104°37'20.042"W	2.09	
5933.00	6.300	120.900	5568.08	-838.87	-850.62	1404.48	40°09'33.613"N	104°37'19.917"W	2.42	
6020.00	3.800	125.500	5654.74	-842.95	-854.75	1410.92	40°09'33.572"N	104°37'19.834"W	2.91	
6108.00	2.600	117.300	5742.60	-845.52	-857.36	1415.07	40°09'33.546"N	104°37'19.780"W	1.46	
6193.00	1.800	57.300	5827.54	-845.66	-857.52	1417.91	40°09'33.545"N	104°37'19.744"W	2.71	
6280.00	2.500	20.700	5914.49	-843.13	-855.01	1419.73	40°09'33.569"N	104°37'19.720"W	1.73	
6365.00	0.900	72.100	5999.45	-841.18	-853.07	1421.02	40°09'33.589"N	104°37'19.704"W	2.43	
6538.00	0.400	104.400	6172.44	-840.90	-852.80	1422.90	40°09'33.591"N	104°37'19.680"W	0.35	
6625.00	0.500	71.500	6259.44	-840.85	-852.75	1423.55	40°09'33.592"N	104°37'19.671"W	0.31	
6712.00	4.600	9.800	6346.34	-837.28	-849.19	1424.51	40°09'33.627"N	104°37'19.659"W	5.04	
6797.00	14.300	3.900	6430.09	-823.40	-835.33	1425.80	40°09'33.764"N	104°37'19.642"W	11.45	
6884.00	21.800	359.500	6512.75	-796.49	-808.42	1426.39	40°09'34.030"N	104°37'19.635"W	8.76	
6970.00	29.500	1.500	6590.22	-759.29	-771.22	1426.81	40°09'34.397"N	104°37'19.629"W	9.01	
7057.00	37.400	2.100	6662.75	-711.39	-723.33	1428.34	40°09'34.871"N	104°37'19.609"W	9.09	
7144.00	44.500	2.900	6728.42	-654.44	-666.40	1430.85	40°09'35.433"N	104°37'19.577"W	8.18	
7229.00	55.700	1.300	6782.86	-589.37	-601.34	1433.16	40°09'36.076"N	104°37'19.547"W	13.25	
7314.00	63.300	359.900	6825.97	-516.19	-528.17	1433.90	40°09'36.799"N	104°37'19.538"W	9.05	
7401.00	70.000	359.700	6860.43	-436.36	-448.34	1433.61	40°09'37.588"N	104°37'19.541"W	7.70	
7486.00	79.000	358.900	6883.12	-354.56	-366.52	1432.60	40°09'38.397"N	104°37'19.554"W	10.63	
7555.00	87.100	0.200	6891.46	-286.13	-298.09	1432.07	40°09'39.073"N	104°37'19.561"W	11.89	
7590.00†	88.058	0.200	6892.94	-251.16	-263.12	1432.19	40°09'39.418"N	104°37'19.559"W	2.74	7" Casing Point
7661.00	90.000	0.200	6894.15	-180.18	-192.13	1432.44	40°09'40.120"N	104°37'19.556"W	2.74	

Actual Wellpath Report

GREENLEAF 26N-2HZ AWP

Page 4 of 6

REFERENCE WELLPATH IDENTIFICATION

Operator	KERR-MCGEE OIL & GAS ONSHORE LP	Slot	SLOT#32 GREENLEAF 26N-2HZ (452' FSL & 1645' FEL, SEC.02)
Area	COLORADO	Well	GREENLEAF 26N-2HZ
Field	WELD COUNTY (KERR MCGEE)	Wellbore	GREENLEAF 26N-2HZ AWB <11553>
Facility	SEC.02-T2N-R65W		

WELLPATH DATA (140 stations)

MD [ft]	Inclination [°]	Azimuth [°]	TVD [ft]	Vert Sect [ft]	North [ft]	East [ft]	Latitude	Longitude	DLS [°/100ft]	Comments
7748.00	89.800	359.800	6894.30	-93.18	-105.13	1432.44	40°09'40.980"N	104°37'19.556"W	0.51	
7833.00	91.500	359.700	6893.33	-8.20	-20.14	1432.07	40°09'41.820"N	104°37'19.561"W	2.00	
7918.00	91.700	359.800	6890.96	76.76	64.82	1431.70	40°09'42.659"N	104°37'19.566"W	0.26	
8006.00	91.500	0.700	6888.50	164.73	152.79	1432.08	40°09'43.528"N	104°37'19.561"W	1.05	
8091.00	89.400	1.400	6887.84	249.72	237.76	1433.64	40°09'44.368"N	104°37'19.540"W	2.60	
8176.00	88.600	2.100	6889.32	334.68	322.71	1436.24	40°09'45.208"N	104°37'19.507"W	1.25	
8261.00	87.500	1.900	6892.21	419.60	407.61	1439.20	40°09'46.047"N	104°37'19.469"W	1.32	
8347.00	87.900	1.700	6895.66	505.51	493.50	1441.90	40°09'46.895"N	104°37'19.434"W	0.52	
8432.00	88.900	1.500	6898.04	590.46	578.43	1444.27	40°09'47.735"N	104°37'19.403"W	1.20	
8519.00	88.100	1.600	6900.31	677.41	665.37	1446.62	40°09'48.594"N	104°37'19.373"W	0.93	
8604.00	88.800	1.200	6902.61	762.37	750.31	1448.70	40°09'49.433"N	104°37'19.346"W	0.95	
8689.00	88.100	1.600	6904.91	847.33	835.25	1450.78	40°09'50.273"N	104°37'19.319"W	0.95	
8777.00	89.000	1.300	6907.14	935.28	923.20	1453.00	40°09'51.142"N	104°37'19.291"W	1.08	
8864.00	88.200	1.300	6909.26	1022.25	1010.15	1454.98	40°09'52.001"N	104°37'19.265"W	0.92	
8949.00	88.600	1.500	6911.64	1107.20	1095.09	1457.05	40°09'52.840"N	104°37'19.238"W	0.53	
9036.00	87.800	1.600	6914.37	1194.15	1182.01	1459.40	40°09'53.699"N	104°37'19.208"W	0.93	
9121.00	88.000	1.800	6917.48	1279.07	1266.92	1461.92	40°09'54.538"N	104°37'19.175"W	0.33	
9208.00	88.200	0.300	6920.37	1366.01	1353.85	1463.52	40°09'55.397"N	104°37'19.155"W	1.74	
9292.00	88.600	0.700	6922.71	1449.98	1437.82	1464.25	40°09'56.227"N	104°37'19.145"W	0.67	
9377.00	89.000	0.500	6924.49	1534.96	1522.79	1465.14	40°09'57.067"N	104°37'19.134"W	0.53	
9463.00	87.900	359.200	6926.82	1620.92	1608.76	1464.92	40°09'57.916"N	104°37'19.137"W	1.98	
9548.00	88.800	359.700	6929.27	1705.87	1693.72	1464.10	40°09'58.756"N	104°37'19.147"W	1.21	
9634.00	88.600	359.300	6931.22	1791.84	1779.69	1463.35	40°09'59.606"N	104°37'19.157"W	0.52	
9719.00	88.600	359.000	6933.30	1876.79	1864.66	1462.09	40°10'00.445"N	104°37'19.173"W	0.35	
9806.00	88.900	358.800	6935.19	1963.74	1951.62	1460.42	40°10'01.305"N	104°37'19.194"W	0.41	
9891.00	89.300	358.400	6936.53	2048.68	2036.58	1458.34	40°10'02.144"N	104°37'19.221"W	0.67	
9979.00	89.700	358.300	6937.30	2136.62	2124.54	1455.81	40°10'03.013"N	104°37'19.253"W	0.47	
10066.00	89.900	358.100	6937.60	2223.55	2211.50	1453.08	40°10'03.873"N	104°37'19.289"W	0.33	
10153.00	90.300	358.200	6937.45	2310.47	2298.45	1450.27	40°10'04.732"N	104°37'19.325"W	0.47	
10238.00	90.100	359.300	6937.15	2395.43	2383.43	1448.41	40°10'05.572"N	104°37'19.349"W	1.32	
10326.00	90.200	0.000	6936.92	2483.42	2471.43	1447.88	40°10'06.441"N	104°37'19.355"W	0.80	
10411.00	89.800	0.800	6936.92	2568.42	2556.43	1448.47	40°10'07.281"N	104°37'19.348"W	1.05	
10498.00	89.100	1.500	6937.76	2655.41	2643.40	1450.21	40°10'08.141"N	104°37'19.325"W	1.14	
10583.00	89.200	1.100	6939.02	2740.39	2728.37	1452.14	40°10'08.980"N	104°37'19.300"W	0.49	
10670.00	90.100	1.100	6939.55	2827.39	2815.35	1453.81	40°10'09.840"N	104°37'19.279"W	1.03	
10755.00	89.600	1.700	6939.77	2912.37	2900.33	1455.89	40°10'10.680"N	104°37'19.252"W	0.92	
10842.00	89.800	1.500	6940.23	2999.36	2987.29	1458.32	40°10'11.539"N	104°37'19.220"W	0.33	
10928.00	90.100	1.600	6940.30	3085.34	3073.26	1460.65	40°10'12.389"N	104°37'19.190"W	0.37	
11015.00	90.200	1.800	6940.07	3172.32	3160.22	1463.23	40°10'13.248"N	104°37'19.157"W	0.26	
11102.00	90.300	1.100	6939.70	3259.31	3247.19	1465.43	40°10'14.107"N	104°37'19.129"W	0.81	
11187.00	90.500	0.900	6939.10	3344.30	3332.18	1466.91	40°10'14.947"N	104°37'19.110"W	0.33	
11272.00	89.400	1.500	6939.18	3429.29	3417.16	1468.69	40°10'15.787"N	104°37'19.087"W	1.47	
11359.00	89.700	1.400	6939.86	3516.28	3504.13	1470.89	40°10'16.646"N	104°37'19.058"W	0.36	
11445.00	90.100	1.500	6940.01	3602.26	3590.10	1473.07	40°10'17.496"N	104°37'19.030"W	0.48	
11535.00	89.400	0.800	6940.40	3692.26	3680.08	1474.88	40°10'18.385"N	104°37'19.007"W	1.10	

Actual Wellpath Report

GREENLEAF 26N-2HZ AWP

Page 5 of 6

REFERENCE WELLPATH IDENTIFICATION

Operator	KERR-MCGEE OIL & GAS ONSHORE LP	Slot	SLOT#32 GREENLEAF 26N-2HZ (452' FSL & 1645' FEL, SEC.02)
Area	COLORADO	Well	GREENLEAF 26N-2HZ
Field	WELD COUNTY (KERR MCGEE)	Wellbore	GREENLEAF 26N-2HZ AWB <11553>
Facility	SEC.02-T2N-R65W		

WELLPATH DATA (140 stations)

MD [ft]	Inclination [°]	Azimuth [°]	TVD [ft]	Vert Sect [ft]	North [ft]	East [ft]	Latitude	Longitude	DLS [°/100ft]	Comments
11617.00	89.600	1.100	6941.12	3774.25	3762.06	1476.23	40°10'19.195"N	104°37'18.989"W	0.44	
11702.00	89.900	1.100	6941.49	3859.24	3847.05	1477.87	40°10'20.035"N	104°37'18.968"W	0.35	
11789.00	90.000	0.700	6941.56	3946.24	3934.04	1479.23	40°10'20.895"N	104°37'18.950"W	0.47	
11914.00	90.500	0.600	6941.02	4071.24	4059.03	1480.65	40°10'22.130"N	104°37'18.932"W	0.41	Last BHI MWD+IFR Surveys
11967.00	90.500	0.600	6940.56	4124.24	4112.02	1481.21	40°10'22.654"N	104°37'18.925"W	0.00	Projection to Bit

HOLE & CASING SECTIONS - Ref Wellbore: GREENLEAF 26N-2HZ AWB <11553> Ref Wellpath: GREENLEAF 26N-2HZ AWP

String/Diameter	Start MD [ft]	End MD [ft]	Interval [ft]	Start TVD [ft]	End TVD [ft]	Start N/S [ft]	Start E/W [ft]	End N/S [ft]	End E/W [ft]
13.5in Open Hole	16.00	1293.00	1277.00	16.00	1292.97	0.00	0.00	1.28	0.30
9.625in Casing Surface	16.00	1283.00	1267.00	16.00	1282.97	0.00	0.00	1.25	0.26
8.75in Open Hole	1293.00	7600.00	6307.00	1292.97	6893.26	1.28	0.30	-253.12	1432.23
7in Casing Intermediate	16.00	7590.00	7574.00	16.00	6892.94	0.00	0.00	-263.12	1432.19
6.125in Open Hole	7600.00	11967.00	4367.00	6893.26	6940.56	-253.12	1432.23	4112.02	1481.21

TARGETS

Name	TVD [ft]	North [ft]	East [ft]	Grid East [US ft]	Grid North [US ft]	Latitude	Longitude	Shape
SEC.02-T2N-R65W LINES	0.00	1.11	-149.84	3243777.93	1302940.31	40°09'42.030"N	104°37'39.936"W	polygon
GREENLEAF 26N-2HZ BHL ON PLAT (460'FNL & 50'FEL, SEC.02) REV-1	6892.00	4138.12	1482.76	3245369.66	1307093.00	40°10'22.912"N	104°37'18.905"W	point
GREENLEAF 26N-2HZ LANDBOX	6892.00	0.00	0.00	3243927.77	1302940.67	40°09'42.019"N	104°37'38.006"W	polygon

WELLPATH COMPOSITION - Ref Wellbore: GREENLEAF 26N-2HZ AWB <11553> Ref Wellpath: GREENLEAF 26N-2HZ AWP

Start MD [ft]	End MD [ft]	Positional Uncertainty Model	Log Name/Comment	Wellbore
16.00	1248.00	ISCWSA MWD, Rev. 3 (Standard)	CATHEDRAL ENERGY MWD SURVEYS <131-1248>	GREENLEAF 26N-2HZ AWB <11553>
1248.00	7555.00	NaviTrak (MAGCORR,IFR)	BHI MWD+IFR SURVEYS 8 3/4" HOLE <1365-7555>	GREENLEAF 26N-2HZ AWB <11553>
7555.00	11914.00	NaviTrak (MAGCORR,IFR)	BHI MWD+IFR SURVEYS 6 1/8" HOLE <7661-11914>	GREENLEAF 26N-2HZ AWB <11553>
11914.00	11967.00	Blind Drilling (std)	Projection to bit	GREENLEAF 26N-2HZ AWB <11553>

Actual Wellpath Report

GREENLEAF 26N-2HZ AWP

Page 6 of 6

REFERENCE WELLPATH IDENTIFICATION

Operator	KERR-MCGEE OIL & GAS ONSHORE LP	Slot	SLOT#32 GREENLEAF 26N-2HZ (452' FSL & 1645' FEL, SEC.02)
Area	COLORADO	Well	GREENLEAF 26N-2HZ
Field	WELD COUNTY (KERR MCGEE)	Wellbore	GREENLEAF 26N-2HZ AWB <11553>
Facility	SEC.02-T2N-R65W		

WELLPATH COMMENTS

MD [ft]	Inclination [°]	Azimuth [°]	TVD [ft]	Comment
16.00	0.000	348.800	16.00	Tie-On
131.00	0.200	348.800	131.00	Begin CATHEDRAL MWD Surveys
1248.00	0.200	47.600	1247.97	Tie-Into CATHEDRAL MWD Surveys
1365.00	0.500	58.400	1364.97	Begin BHI MWD+IFR Surveys
7590.00	88.058	0.200	6892.94	7" Casing Point
11914.00	90.500	0.600	6941.02	Last BHI MWD+IFR Surveys
11967.00	90.500	0.600	6940.56	Projection to Bit