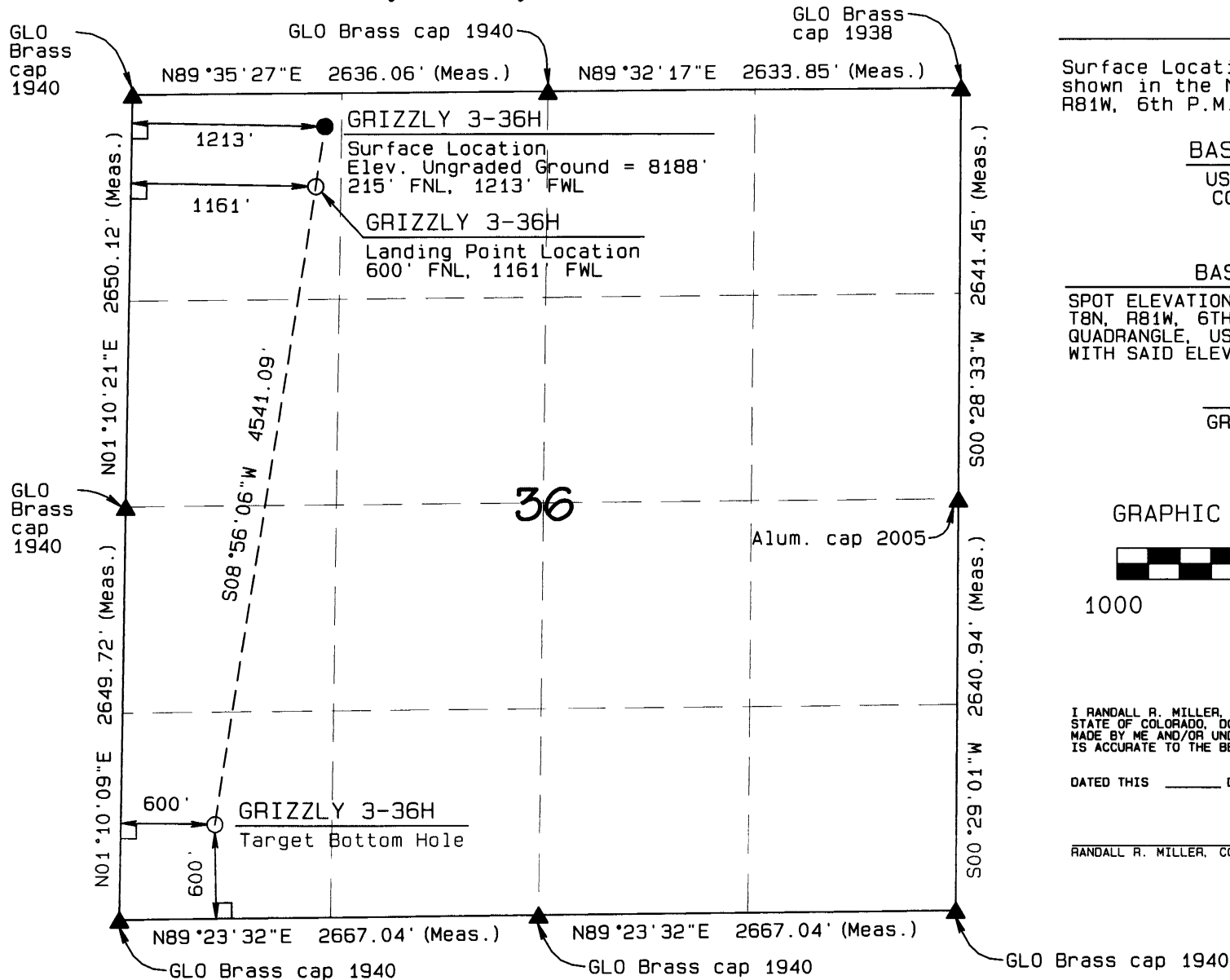


T8N, R81W, 6th P.M.

EE3 LLC



Surface Location, GRIZZLY 3-36H as shown in the NW1/4NW1/4 of Section 36, T8N, R81W, 6th P.M., Jackson County, Colorado.

BASIS OF BEARINGS:

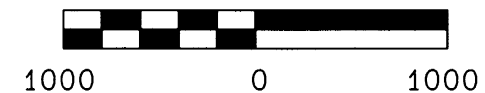
US STATE PLANE 1983
CO NORTH 0501 GRID

BASIS OF ELEVATION

SPOT ELEVATION AT THE NE CORNER OF SECTION 36, T8N, R81W, 6TH PM, TAKEN FROM THE DELANEY BUTTE QUADRANGLE, USGS 7.5 MIN QUAD (TOPOGRAPHIC MAP) WITH SAID ELEVATION MARKED AS BEING 8121 FEET.

SURFACE USE
GRAZING/RANGELAND

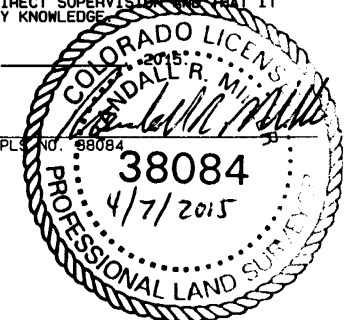
GRAPHIC SCALE 1"=1000'



I RANDALL R. MILLER, BEING A REGISTERED LAND SURVEYOR IN THE STATE OF COLORADO, DO HEREBY CERTIFY THAT THIS PLAT WAS MADE BY ME AND/OR UNDER MY DIRECT SUPERVISION AND THAT IT IS ACCURATE TO THE BEST OF MY KNOWLEDGE.

DATED THIS _____ DAY OF _____, 2015.

RANDALL R. MILLER, COLORADO PLS. NO. 68084



LEGEND

90° SYMBOL
FOUND CORNER
PROPOSED WELL
PROPOSED BHL/LPL



	NAD 83 (SURFACE LOCATION)
	LATITUDE=40.628725°N
	LONGITUDE=106.439683°W PDOP=0.836
NAD 83 (TARGET BOTTOM HOLE)	NAD 83 (LANDING POINT LOCATION)
LATITUDE=40.616396°N	LATITUDE=40.627665°N
LONGITUDE=106.442051°W	LONGITUDE=106.439887°W

NORTH PARK ENGINEERING & CONSULTING, INC.

P.O. BOX 395
WALDEN, CO 80480
(970) 723-3725

DATE OF FIELD WORK: 11-03-2014 DRAWING COMPLETION: 12-11-2014
SURVEYED BY: ARM DRAWN BY: TKH CHECKED BY: ARM