

HSR-Stanley Odenbaugh 13-12

Existing Features	
KB	10

Surface csg shoe at	658
---------------------	-----

Bottom of Foxhills (FHM)	843
--------------------------	-----

Sussex Top	4166
Not producing Sussex w/in 1 mile	
Sussex Bottom	4402

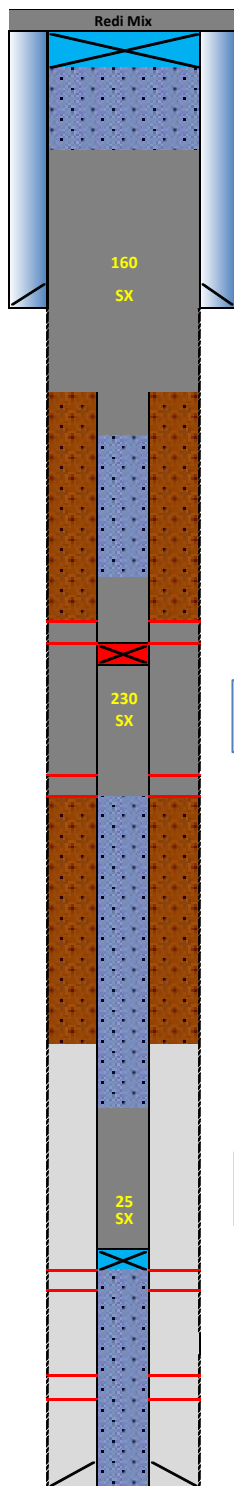
Shannon Base	4747
Not producing Shannon w/in 1 mile	

TOC (CBL)	6160
-----------	------

Niobrara Top	6986
Perf Top	7002
Perf Bottom	7005

Codell Top	7231
Perf Top	7231
Perf Bottom	7240

PBMD	7345
4 1/2" 11.6# CSG	7373



Proposed Additions for P&A

80	CIBP 8 5/8" 24#
----	-----------------

558	TOC
-----	-----

Cement Blend: Type III w/cello flake and CaCl₂ as necessary, mixed at 14.8 ppg and 1.33 cuft/sk yield.

950	Casing Stub
1050	BOC

3760	TOC
------	-----

3960	Top Squeeze Holes
3990	CICR 4 1/2" 11.6#

Cement Blend: "G" w/ 0.25 pps cello flake, 0.4% CD-32, 0.4% ASA-301, mixed at 15.8 ppg and 1.15 cuft/sk yield.

4450	BOC/Bottom Squeeze Holes
------	--------------------------

6550	TOC
------	-----

Cement Blend: "G" w/ 20% silica flour, 0.4% CD-32, 0.4% ASA-301 and R-3 to achieve 2:30 pump time, mixed at 15.8 ppg and 1.38 cuft/sk yield.

6950	CIBP 4 1/2" 11.6#
------	-------------------

API#	05-123-17888			
WINS:	76257			
Equipment	Specs.	Depth	Capacity (bbl/ft)	Capacity ft ³ /ft
Surface Casing	8 5/8" (24#)	658	0.0637	0.3576
Production Casing	4 1/2" (11.6#)	7373	0.0155	0.0873
Production Tubing	2 3/8" (4.7#)	7205	0.0039	0.0217
Hole Size (TOP)	8	N/A	0.0622	0.3491
Hole Size (SU/SH)	9	N/A	0.0787	0.4418
OH X CSG Annulus (SU/SH)	N/A	N/A	0.0590	0.3313

Cement Calculations				
Section	Volume cu-ft	Cement Sacks	Excess	
Open Hole	122.31	91.96	20%	Foxhills Plug 8 in. hole
Surface Casing	35.76	26.89		
Production Casing	8.73	6.56		
FX Total	158.07	125.42	160	
OH X CSG Annulus	194.82	169.4107	20%	Sussex Squeeze 9 in. hole
Production Casing	60.237	52.38		
SU Total	255.06	221.7907	230	
OH X CSG Annulus				
Production Casing	34.92	25.30		
NB/CD Total	34.92	25.30	25	

Cement Yield	1.33	1.15	1.38
	FX	SX/SH	NB

Legend	
	Existing cement with CBL
	New cement
	Assumed cement w/ no CBL
	Cast Iron Cement Retainer
	Cast Iron Bridge Plug
	Mud
	Water + Biocide