

PSC 14-9-5Y

Existing Features	
KB	12

Surface csg shoe at	540
---------------------	-----

Bottom of Foxhills (FHM)	659
--------------------------	-----

Sussex Top	3919
------------	------

TOC (CBL)	3976
-----------	------

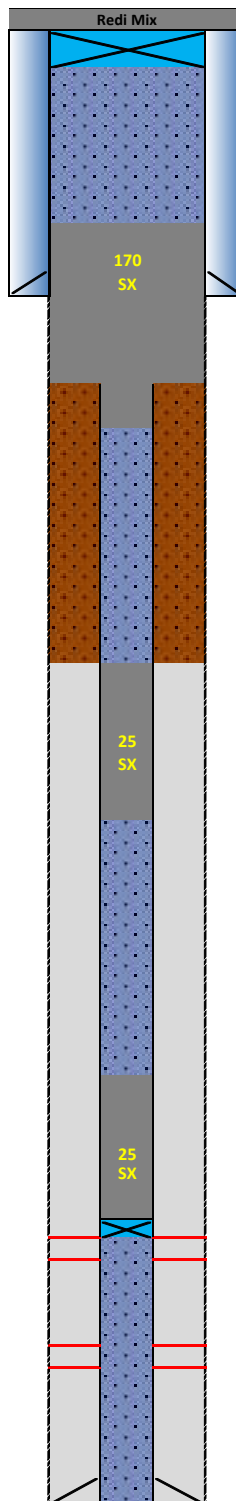
Sussex Bottom	4202
Not producing Sussex w/in 1 mile	

Shannon Base	4538
Not producing Shannon w/in 1 mile	

Niobrara Top	6798
Perf Top	6801
Perf Bottom	6885

Codell	7073
Perf Top	7074
Perf Bottom	7094

PBMD	7193
4 1/2" 11.6# CSG	7221



Proposed Additions for P&A	
80	CIBP 8 5/8" 24#

440	TOC
-----	-----

Cement Blend: Type III w/cello flake and CaCl₂ as necessary, mixed at 14.8 ppg and 1.33 cuft/sk yield.

760	Casing Stub
860	BOC

3950	TOC
------	-----

Cement Blend: "G" w/ 0.4% CD-32, 0.4% ASA-301, mixed at 15.8 ppg and 1.15 cuft/sk yield.

4250	BOC
------	-----

6350	TOC
------	-----

Cement Blend: "G" w/ 20% silica flour, 0.4% CD-32, 0.4% ASA-301 and R-3 to achieve 2:30 pump time, mixed at 15.8 ppg and 1.38 cuft/sk yield.

6750	CIBP 4 1/2" 11.6#
------	-------------------

API#	05-123-21563			
Wins:	75681			
Equipment	Specs.	Depth	Capacity (bbl/ft)	Capacity ft ³ /ft
Surface Casing	8 5/8" (24#)	540	0.0636	0.3575
Production Casing	4 1/2" (11.6#)	7221	0.0155	0.0873
Production Tubing	2 3/8" (4.7#)	7041	0.0039	0.0217
Hole Size (TOP)	9	N/A	0.0787	0.4418
Hole Size (SU/SH)	N/A	N/A	N/A	N/A
Hole Size (NB)	N/A	N/A	N/A	N/A

Cement Calculations				
Section	Volume cu-ft	Cement Sacks	Excess	
Open Hole	136.07	102.31	40%	Foxhills Plug 9 in. hole
Surface casing	35.75	26.88		
Production casing	8.73	6.56		
FX Total	171.82	135.75	170	
Production casing	26.19	22.77391		
SU Total	26.19	22.77391	25	
Open Hole				
Production	34.92	25.30		
NB/CD Total	34.92	25.30	25	

Cement Yield	1.33	1.15	1.38
	FX	SX/SH	NB

Legend	
	Existing cement with CBL
	New cement
	Assumed cement w/ no CBL
	Cast Iron Cement Retainer
	Cast Iron Bridge Plug
	Mud
	Water + Biocide