



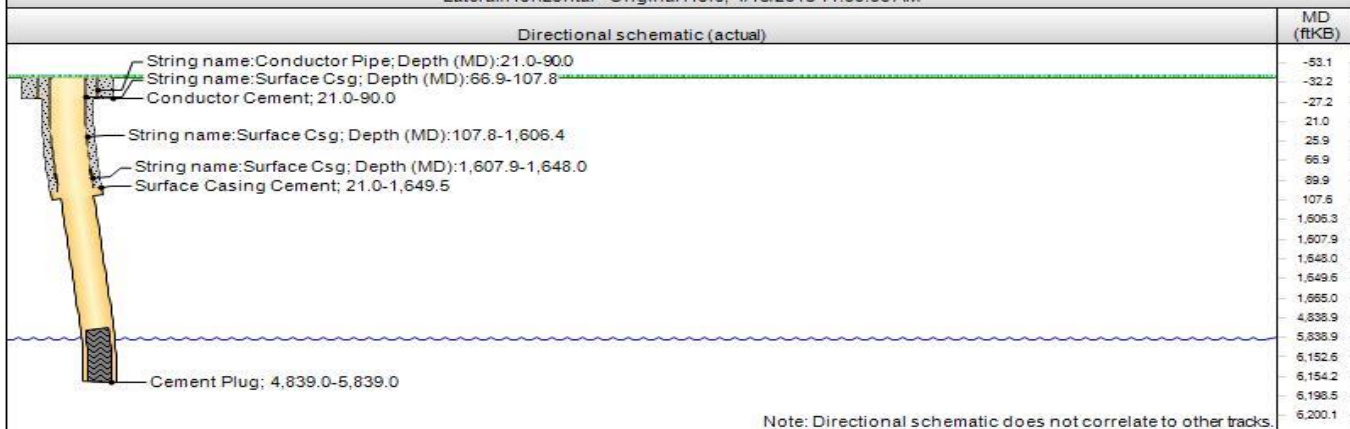
Wellbore Schematic

Well Name: HORSETAIL 08D-1704

Well Information

API Number 051234102400				WPC ID 1CO0761188		Field Name Wildcat			KB-Grd (ft) 21.00		Original Spud Date 4/10/2015	
Lot	Quarter 1 NW	Quarter 2 NW	Quarter 3	Quarter 4	Section 8	Township	Twnshp.... 10 N	Range	Rng E.... 57 W	County Weld	State CO	Well Configuration Type Lateral/Horizontal
Section		Township		Block		Survey					Abstract	

Lateral/Horizontal - Original Hole, 4/15/2015 11:08:06 AM



Wellbore Sections

Section Des	Start Date	Size (in)	Act Top (ftKB)	Act Btm (ftKB)
Conductor	3/31/2015	24	21.0	90.0
Surface	4/10/2015	13 1/2	90.0	1,665.0
Intermediate	4/11/2015	8 3/4	1,665.0	5,839.0

Casing

Cement Retainer, <depth>ftKB

Run Date			Comment			
OD (in)	Wt (lb/ft)	Grade	Top (ft\B)	Btm (ft\B)	Len (ft)	Item Des

Conductor Pipe, 90.0ftKB

Run Date: 3/31/2015		Comment:				
OD (in)	Wt (lb/ft)	Grade	Top (ftKB)	Btm (ftKB)	Len (ft)	Item Des
16	65.00	H-40	21.0	90.0	69.00	Casing Joints

Surface Csg, 1,649.5ftKB

Run Date			Comment			
4/11/2015						
OD (in)	Wt (lb/ft)	Grade	Top (ftKB)	Btm (ftKB)	Len (ft)	Item Des
9 5/8	36.00	J-55	21.0	21.0	0.00	Landing Joint
9 5/8	36.00	J-55	21.0	26.0	5.00	Pup joints / Wellhead
9 5/8	36.00	J-55	26.0	66.9	40.90	Casing Joints
9 5/8	36.00	J-55	66.9	107.8	40.88	Casing Joints
9 5/8	36.00	J-55	107.8	1,606.4	1,498.63	Casing Joints
9 5/8	36.00	J-55	1,606.4	1,607.9	1.50	Float Collar
9 5/8	36.00	J-55	1,607.9	1,648.0	40.12	Casing Joints
9 5/8	36.00	J-55	1,648.0	1,649.5	1.50	Float Shoe

Cement

Description Conductor Cement			Cementing Start Date 3/31/2015		Top Depth (ft/B) 21.0		Bottom Depth (ft/B) 90.0		
Fluid		Est Top (ft/B)		Est Btm (ft/B)		Amount (sacks)		Class	
Description Surface Casing Cement			Cementing Start Date 4/11/2015		Top Depth (ft/B) 21.0		Bottom Depth (ft/B) 1,649.5		
Fluid		Est Top (ft/B)		Est Btm (ft/B)		Amount (sacks)		Class	
Spacer		21.0		21.0					
Surface Cement		16.8		1,724.3		778		Type III Cement	
Displacement		21.0		1,724.3					
Description Cement Plug			Cementing Start Date 4/15/2015		Top Depth (ft/B) 4,839.0		Bottom Depth (ft/B) 5,839.0		
Fluid		Est Top (ft/B)		Est Btm (ft/B)		Amount (sacks)		Class	
Spacer		21.0		21.0					
Plug Back Cement		21.0		21.0		422		G	