

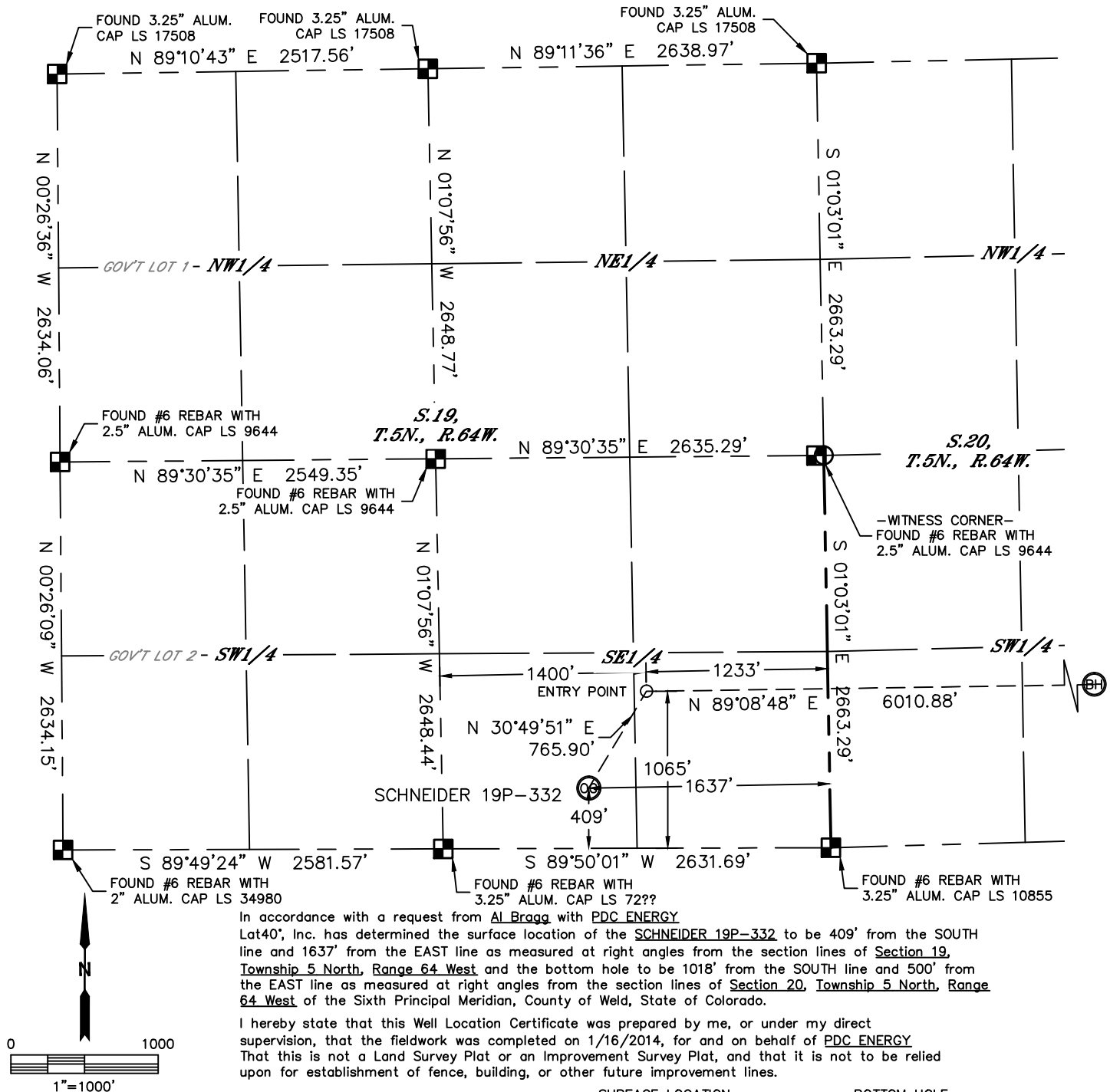


Lat40°, Inc. 1635 Foxtrail Drive, Suite 325 Loveland, CO 970-776-3321

# WELL LOCATION CERTIFICATE

THIS MAP DOES NOT REPRESENT A BOUNDARY SURVEY

SECTION: 19  
TOWNSHIP: 5N  
RANGE: 64W



NOTE:

- 1) Bearings shown are Grid Bearings of the Colorado State Plane Coordinate System, North Zone, North American Datum 1983/2007. The lineal dimensions as contained herein are based upon the "U.S. Survey Foot."
- 2) Ground elevations are based on an observed GPS elevation (NAVD 1988 DATUM).
- 3) IMPROVEMENTS: See LOCATION DRAWING for all visible improvements within 500' of disturbed area.
- 4) SURFACE USE: RANGE LAND
- 5) INSTRUMENT OPERATOR: BRIAN ROTTINGHAUS
- 6) NEAREST CULTURAL ITEMS:  
BUILDING: 500' SW  
BUILDING UNIT: 505' NW  
HIGH OCCUPANCY BUILDING UNIT: 5280'+  
DESIGNATED OUTSIDE ACTIVITY AREA: 5280'+  
PUBLIC ROAD: (COUNTY ROAD 54) 399' S  
ABOVEGROUND UTILITY: 356' S  
RAILROAD: ±1045' NW  
PROPERTY LINE: 409' S

**SURFACE LOCATION**  
LAT: 40.37844°N  
LONG: 104.58911°W  
PDOP: 3.5  
ELEV: 4652'  
1/4,1/4: SW1/4SE1/4

**ENTRY POINT**  
LAT: 40.38023°N  
LONG: 104.58768°W  
1/4,1/4: SE1/4SE1/4

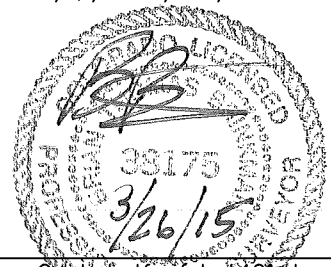
**BOTTOM HOLE**  
LAT: 40.38031°N  
LONG: 104.56611°W  
1/4,1/4: SE1/4SE1/4

## LEGEND

- = ALIQUOT MONUMENT AS DESCRIBED  
○ = CALCULATED POSITION

## SHEET 1 OF 2

Brian T. Brinkman—On behalf of Lat40° Inc.  
Colorado Licensed Professional  
Land Surveyor No. 38175  
DATE: 03/26/2015  
PROJECT#: 2013130



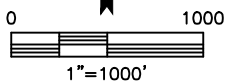
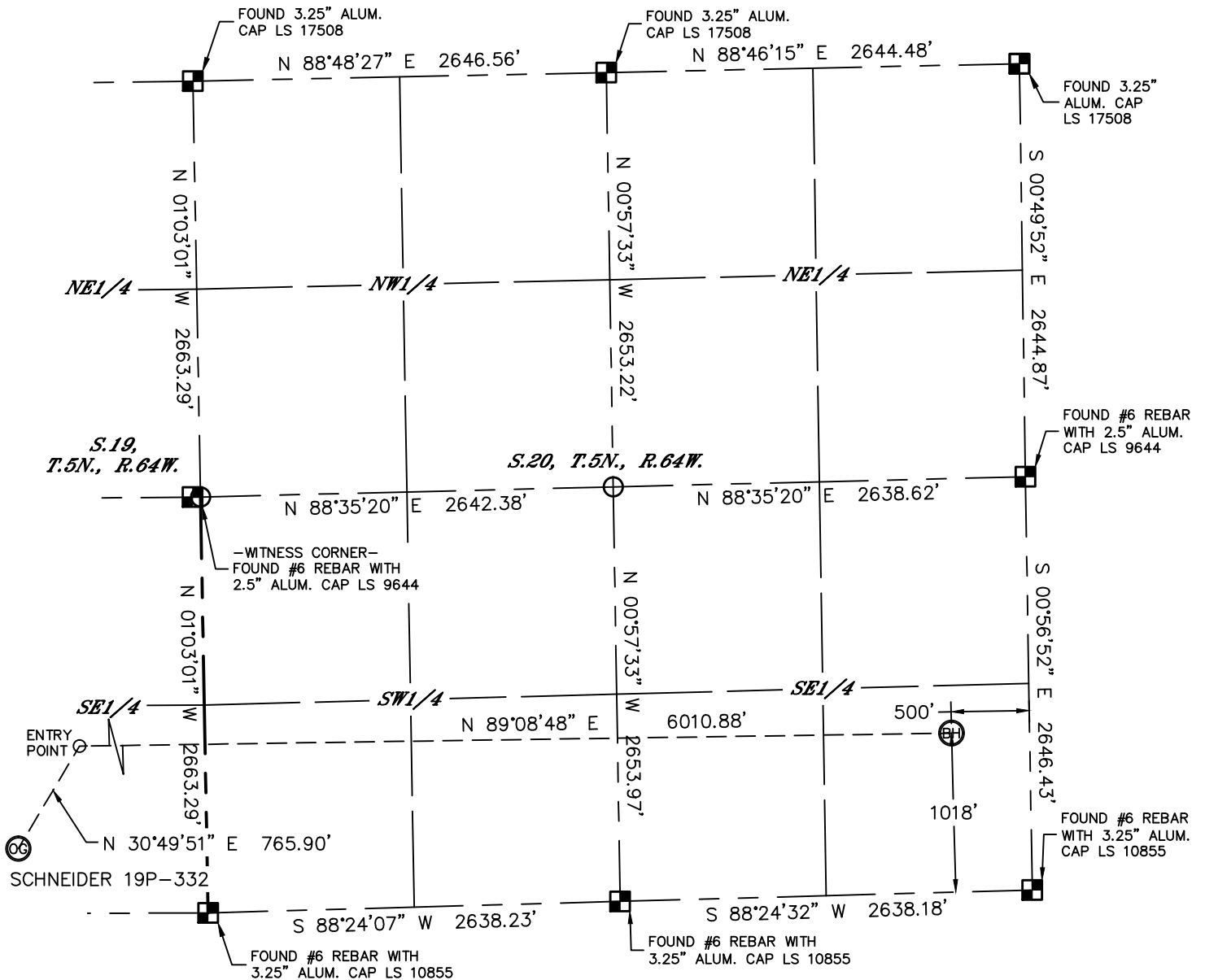


Lat40°, Inc. 1635 Foxtrail Drive, Suite 325 Loveland, CO 970-776-3321

# WELL LOCATION CERTIFICATE

THIS MAP DOES NOT REPRESENT A BOUNDARY SURVEY

SECTION: 19  
TOWNSHIP: 5N  
RANGE: 64W

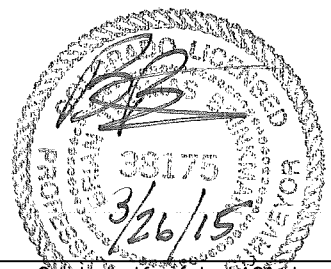


## LEGEND

- = ALIQUOT MONUMENT AS DESCRIBED
- = CALCULATED POSITION

## SHEET 2 OF 2

Brian T. Brinkman—On behalf of Lat40°, Inc.  
Colorado Licensed Professional Land Surveyor No. 38175  
DATE: 03/26/2015  
PROJECT#: 2013130



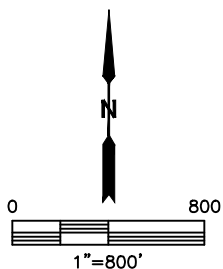
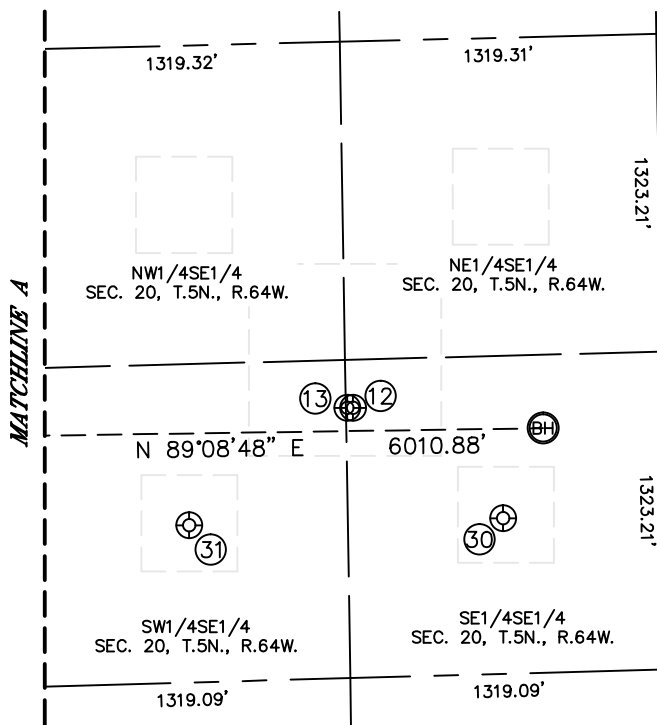
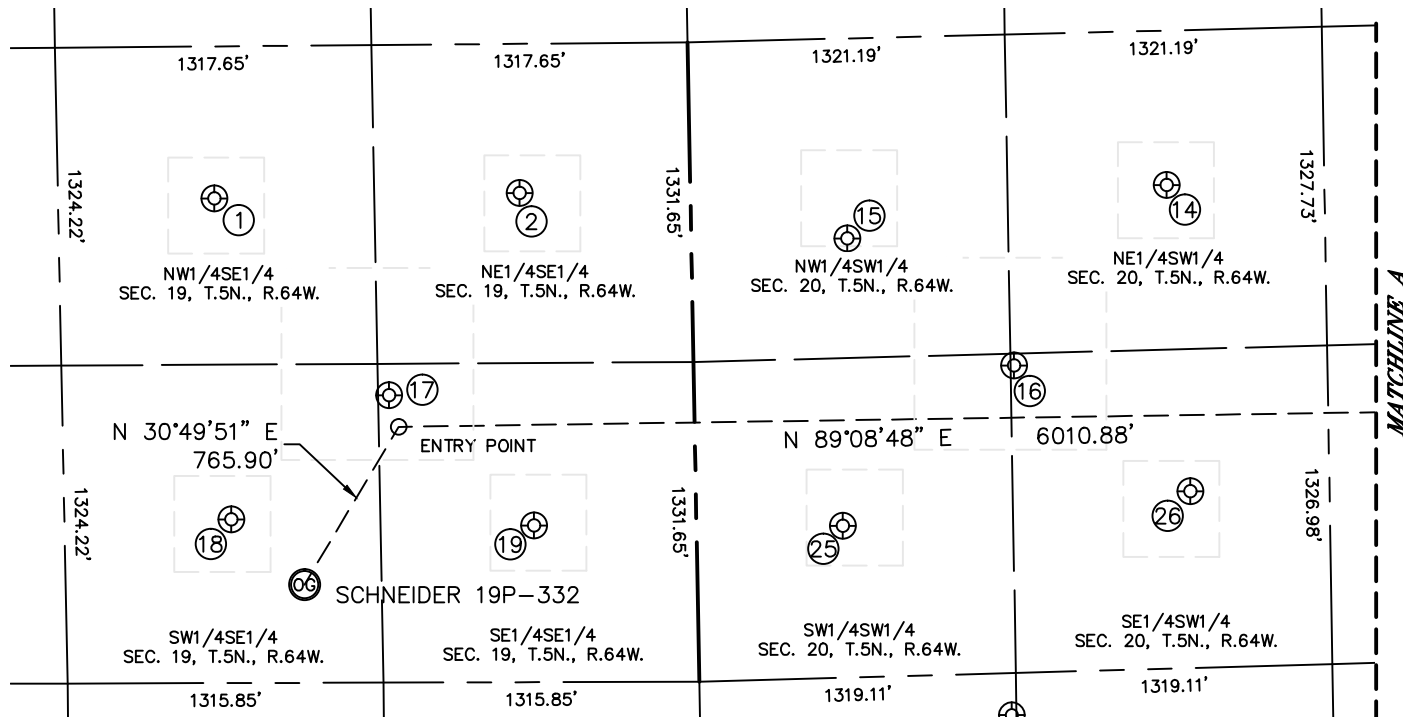


Lat40°, Inc. 1635 Foxtrail Drive, Suite 325 Loveland, CO 970-776-3321

# SITE SKETCH

SCHNEIDER 19P-332

SECTION: 19  
TOWNSHIP: 5N  
RANGE: 64W



SHEET 1 OF 2

DATE: 03/26/2015  
PROJECT#: 2013130



Lat40°, Inc. 1635 Foxtrail Drive, Suite 325 Loveland, CO 970-776-3321

# SITE SKETCH

SCHNEIDER 19P-332

SECTION: 19  
TOWNSHIP: 5N  
RANGE: 64W

WELL NO.	WELL NAME	SHL FOOTAGE				SHL LAT°	SHL LONG°	PDOP	ELEV (FT.)	1/4/1/4
1	AUSTIN 1	2018	FSL	1984	FEL	40.38286	-104.59040	2.0	4626	NWSE
2	MOWERY 19-1	2037	FSL	711	FEL	40.38289	-104.58583	2.1	4624	NESE
12	DANLEY 43-20	1125	FSL	1290	FEL	40.38056	-104.56894	1.7	4659	SESE
13	DANLEY 33-20	1125	FSL	1313	FEL	40.38056	-104.56903	1.7	4659	SESE
14	EVERT 20-1	2013	FSL	1984	FWL	40.38291	-104.57616	1.6	4634	NESW
15	IVAN KLEIN 13-20	1828	FSL	650	FWL	40.38233	-104.58094	1.5	4624	NWSW
16	EVERT 5	1280	FSL	1334	FWL	40.38086	-104.57847	1.8	4638	SESW
17	MOWERY 5	1196	FSL	1271	FEL	40.38059	-104.58782	1.6	4626	SESE
18	PHIL WILSON 19-1	681	FSL	1937	FEL	40.37919	-104.59019	2.3	4641	SWSE
19	MOWERY 19-2	653	FSL	677	FEL	40.37909	-104.58567	1.9	4653	SESE
25	IVAN KLEIN 20-2	632	FSL	609	FWL	40.37905	-104.58106	2.0	4662	SWSW
26	EVERT 20-2	736	FSL	2059	FWL	40.37940	-104.57586	2.0	4659	SESW
30	GILBERT DANLEY 20-1	648	FSL	672	FEL	40.37928	-104.56672	1.9	4655	SESE
31	HOFF 20-1	654	FSL	1981	FEL	40.37924	-104.57141	2.1	4673	SWSE

*SHEET 2 OF 2*

DATE: 3/26/2015  
PROJECT#: 2013130