

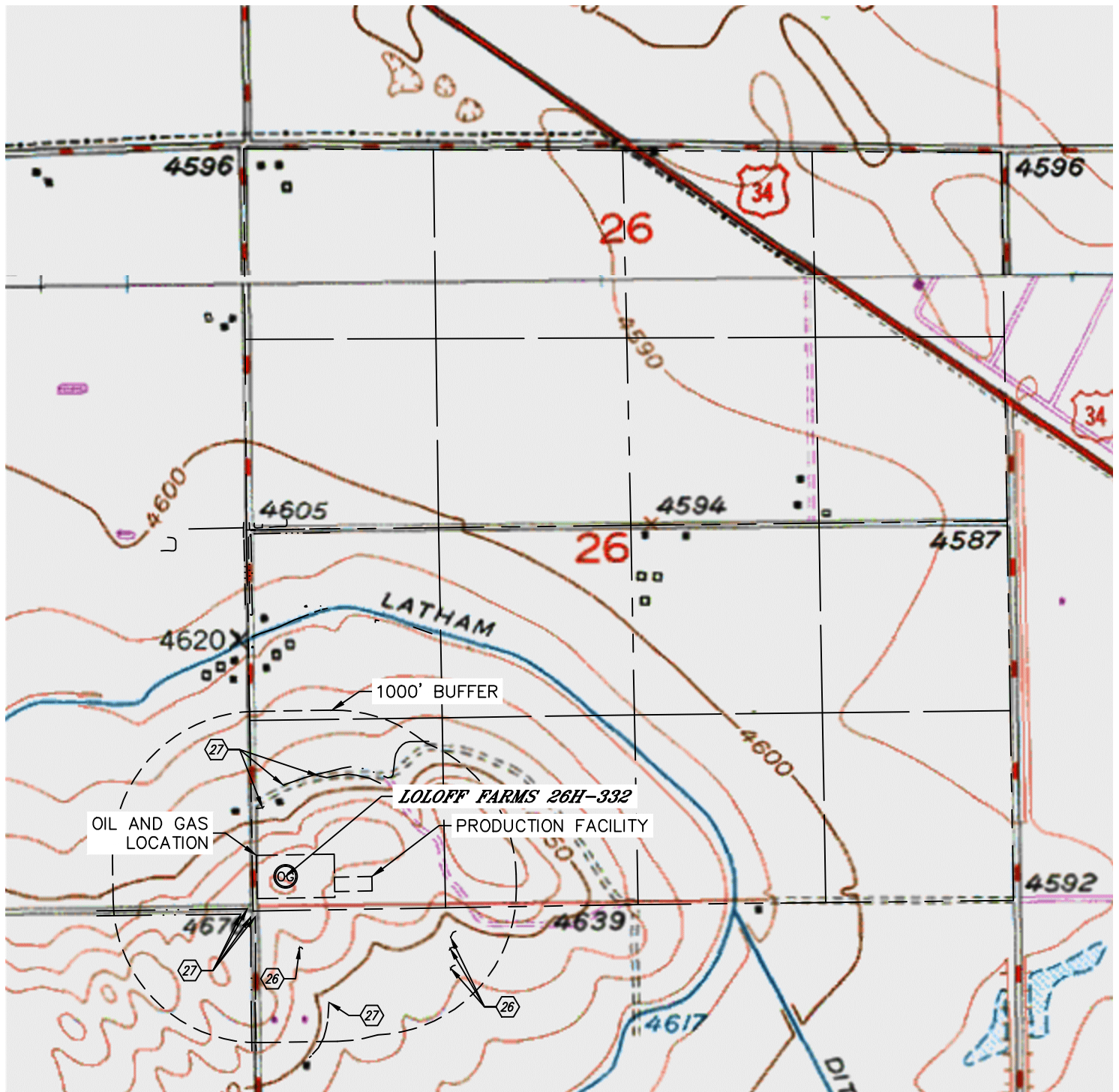


Lat40°, Inc. 1635 Foxtrail Drive, Suite 325 Loveland, CO 970-776-3321

# HYDROLOGY MAP

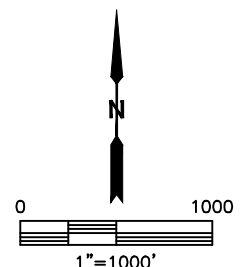
LOLOFF FARMS 5N64W26I PAD

SECTION: 26  
TOWNSHIP: 5N  
RANGE: 64W



DISTANCES MEASURED FROM EDGE OF OIL AND GAS LOCATION:

- ②⑥ POND 343' S, 631', 672' & 765' SE
- ②⑦ DITCH 98', 127', 136' & 157' SW, 330', 485' & 533' N, 730' S



NEAREST DOWN GRADIENT SURFACE WATER: DITCH 98' SW

DATE: 3/11/2015  
PROJECT#: 2014021