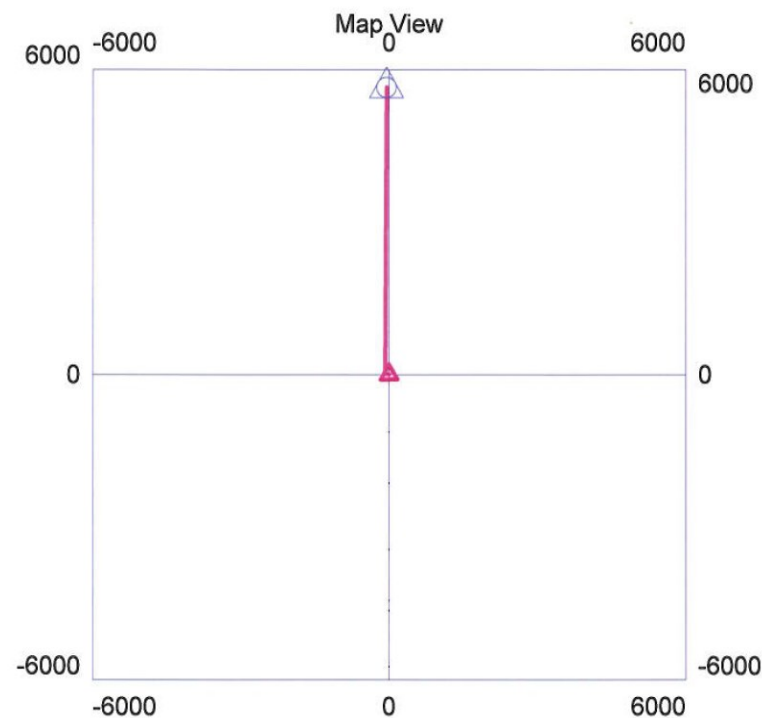
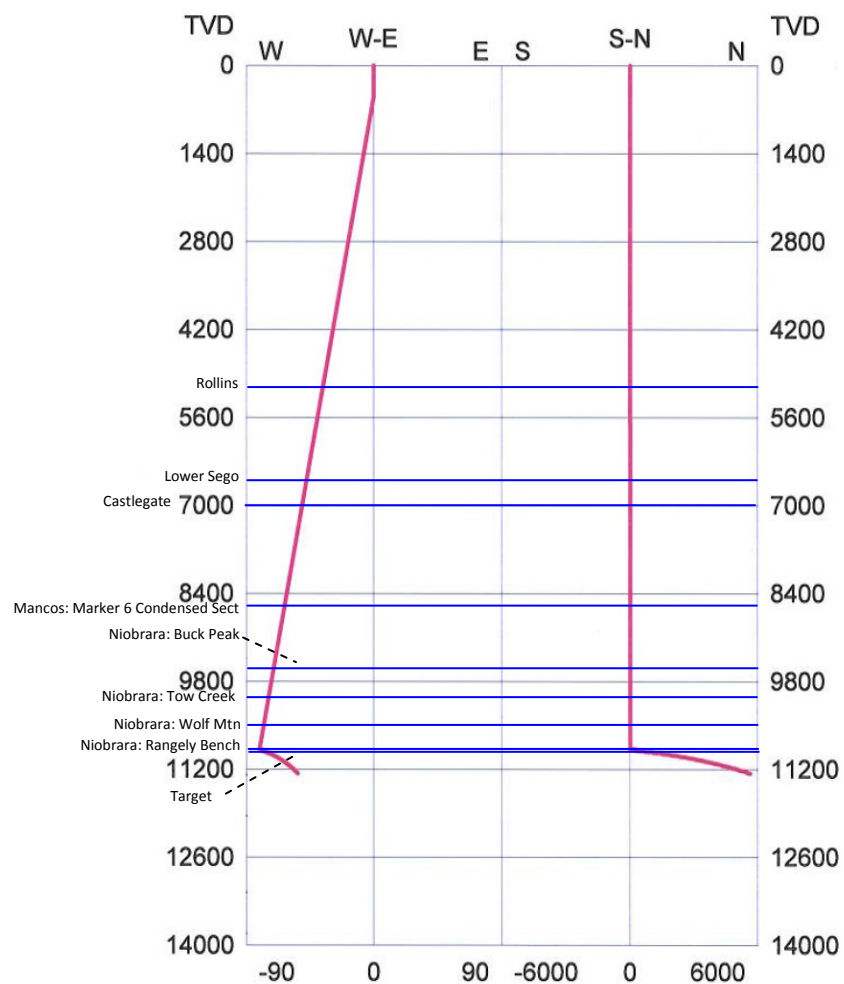




Wsn:104192 WELL: WU_23-3-97_O-4H (WU 23-3-97_O-4H) [DEV]

Directional Survey



WELL DETAILS: Wiley Unit 23-3-97 O-4H, G.L. = 6,022 Ft above S.L.

Geodetic Sys: US State Plane NAD27

Utah North 4301

XY in U.S. Feet

Surface Location:

+N/-S: 0.00

+E/-W: 0.00

Lat: 40.209897° N

Long: 108.240461° W

Bottom Hole Location:

+N/-S: 5649.11

+E/-W: -53.73

Lat: 40.225322° N

Long: 108.240642° W

Project: uinta basin
Date: Tuesday, March 10, 2015 at 08:04 AM

Directional Survey Data - WU 23-3-97_O-4H GEODETIC SYS: US STATE PLANE NAD27 UTAH NORTH 4301

Depth Units = US Feet
X,Y Units = US Feet

MD	TVD	EW	NS	LAT	LONG
-----	-----	-----	-----	-----	-----
0.00	0.00	0.00	0.00	40.209897 N	108.240461 W
500.00	500.00	0.00	0.00		
10882.98	10882.65	-80.71	16.68		
10932.98	10883.06	-80.47	66.68		
10983.02	10881.26	-80.23	116.68		
11033.03	10880.09	-79.99	166.68		
11083.07	10882.16	-79.75	216.68		
11133.42	10888.09	-79.51	266.68		
11184.06	10896.08	-79.27	316.68		
11234.52	10902.88	-79.03	366.68		
11284.60	10905.72	-78.79	416.68		
11334.61	10906.84	-78.55	466.68		
11384.64	10905.22	-78.31	516.68		
11434.65	10903.91	-78.07	566.68		
11484.67	10905.24	-77.84	616.68		
11534.89	10909.90	-77.60	666.67		
11585.33	10916.53	-77.36	716.67		
11635.67	10922.43	-77.12	766.67		
11685.72	10924.52	-76.88	816.67		
11735.74	10926.13	-76.64	866.67		
11785.76	10924.74	-76.40	916.67		
11835.78	10923.46	-76.16	966.67		
11885.79	10924.46	-75.92	1016.67		
11935.95	10928.44	-75.68	1066.67		
11986.29	10934.31	-75.44	1116.67		
12036.58	10939.74	-75.20	1166.67		
12086.60	10941.13	-74.96	1216.67		
12136.65	10943.33	-74.72	1266.67		
12186.66	10942.20	-74.48	1316.67		
12236.67	10941.17	-74.24	1366.67		
12286.69	10942.32	-74.00	1416.67		
12336.85	10946.33	-73.76	1466.67		
12387.20	10952.26	-73.52	1516.66		
12437.52	10957.91	-73.28	1566.66		
12487.52	10958.84	-73.04	1616.66		
12537.61	10961.81	-72.80	1666.66		
12587.62	10960.94	-72.57	1716.66		
12637.63	10960.17	-72.33	1766.66		
12687.65	10961.56	-72.09	1816.66		
12737.83	10965.84	-71.85	1866.66		
12788.22	10972.15	-71.61	1916.66		
12838.29	10974.66	-71.37	1966.66		
12888.47	10978.88	-71.13	2016.66		
12938.49	10980.58	-70.89	2066.66		
12988.52	10982.15	-70.65	2116.66		
13038.52	10981.64	-70.41	2166.66		
13088.55	10983.28	-70.17	2216.66		
13138.75	10987.82	-69.93	2266.66		
13189.20	10994.49	-69.69	2316.66		
13239.28	10997.29	-69.45	2366.66		
13289.44	11001.38	-69.21	2416.65		
13339.48	11003.22	-68.97	2466.65		
13389.55	11005.87	-68.73	2516.65		
13439.55	11005.67	-68.49	2566.65		
13489.58	11007.55	-68.25	2616.65		
13539.81	11012.29	-68.01	2666.65		
13590.29	11019.23	-67.77	2716.65		
13640.38	11022.36	-67.53	2766.65		
13690.53	11026.19	-67.30	2816.65		
13740.56	11028.03	-67.06	2866.65		
13790.70	11031.73	-66.82	2916.65		
13840.70	11031.88	-66.58	2966.65		
13890.75	11034.00	-66.34	3016.65		
13940.98	11038.82	-66.10	3066.65		
13991.46	11045.82	-65.86	3116.65		
14041.59	11049.39	-65.62	3166.65		
14091.71	11052.83	-65.38	3216.65		
14141.74	11054.50	-65.14	3266.64		
14191.95	11059.13	-64.90	3316.64		
14241.96	11059.76	-64.66	3366.64		
14292.02	11062.25	-64.42	3416.64		
14342.27	11067.24	-64.18	3466.64		
14392.69	11073.73	-63.94	3516.64		
14442.92	11078.58	-63.70	3566.64		
14493.01	11081.62	-63.46	3616.64		
14543.03	11083.01	-63.22	3666.64		
14593.31	11088.30	-62.98	3716.64		
14643.32	11089.44	-62.74	3766.64		
14693.41	11092.36	-62.50	3816.64		
14743.68	11097.56	-62.27	3866.64		
14794.24	11105.07	-62.03	3916.64		
14844.47	11109.92	-61.79	3966.64		
14894.55	11112.63	-61.55	4016.64		
14944.56	11113.70	-61.31	4066.64		
14994.88	11119.35	-61.07	4116.64		

15044.90	11121.00	-60.83	4166.63		
15095.02	11124.44	-60.59	4216.63		
15145.33	11129.98	-60.35	4266.63		
15196.13	11138.97	-60.11	4316.63		
15246.39	11144.05	-59.87	4366.63		
15296.45	11146.61	-59.63	4416.63		
15346.46	11147.40	-59.39	4466.63		
15396.78	11153.05	-59.15	4516.63		
15446.82	11155.13	-58.91	4566.63		
15496.98	11159.08	-58.67	4616.63		
15547.72	11167.71	-58.43	4666.63		
15598.38	11175.91	-58.19	4716.63		
15648.69	11181.48	-57.95	4766.63		
15698.77	11184.14	-57.71	4816.63		
15748.77	11184.80	-57.47	4866.63		
15799.04	11190.02	-57.23	4916.63		
15849.09	11192.30	-57.00	4966.63		
15899.27	11196.54	-56.76	5016.62		
15950.26	11206.52	-56.52	5066.62		
16001.03	11215.34	-56.28	5116.62		
16051.40	11221.45	-56.04	5166.62		
16101.49	11224.41	-55.80	5216.62		
16151.50	11225.16	-55.56	5266.62		
16201.72	11229.88	-55.32	5316.62		
16251.78	11232.28	-55.08	5366.62		
16301.99	11236.92	-54.84	5416.62		
16353.32	11248.53	-54.60	5466.62		
16404.22	11258.07	-54.36	5516.62		
16454.66	11264.66	-54.12	5566.62		
16504.75	11267.68	-53.88	5616.62		
16537.25	11268.16	-53.73	5649.11	40.225322 N	108.240642 W

FORMATION:	TVD (GL)	MD (GL)
Rollins	5,304	5,325
Lower Sego	6,584	6,600
Castlegate	7,005	7,035
Mancos - Marker 6	8,362	8,400
Niobrara - Buck Peak	9,691	9,732
Niobrara - Tow Creek	10,151	10,196
Niobrara - Wolf Mountain	10,528	10,598
Niobrara - Rangely Bench	10,861	11,021
Target	10,919	11,203

End of Report