

WELLBORE DIAGRAM

Apollo 41-18

Bayswater E & P

API#: 05-123-26073

NENE Sec. 18-T6N-R63W

470' FNL & 657' FEL

Lat. 40.4924 & Long. -104.4727

Weld County CO

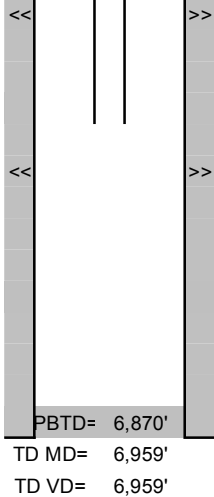
Directions: WCR 70 & 61-1/2, N 5/10 through cattle guard,
E 5/10 to tank battery, SW 1/10 into
Tight location.

Updated
6/18/2014
JLF

G.L.= 4660
K.B.= 4670
10

8-5/8, 24# set @ 475' (12-1/4 O.H.)
Cmtd w/ 220 sx to surf.

TOC: 2400' CBL



Niobrara B, 6580'-6610', 4 spf

Initial frac 10/22/11: 45082 gal pad, 164,231 gal sand-laden fluid w/ 151,080 lbs 30/50 sand.

Well landed with SN/NC + 216 jtns 2-3/8, J-55 tubing + 10' + 4' subs @ 6746' KB (6/18/14)

Codell: 6762-6775

Cleaned out to 6870' on 6/18/14

4-1/2, 11.6# set @ 6947' (7-7/8 O.H.)
Cmtd w/ 490 sx

PBTD= 6,870'
TD MD= 6,959'
TD VD= 6,959'