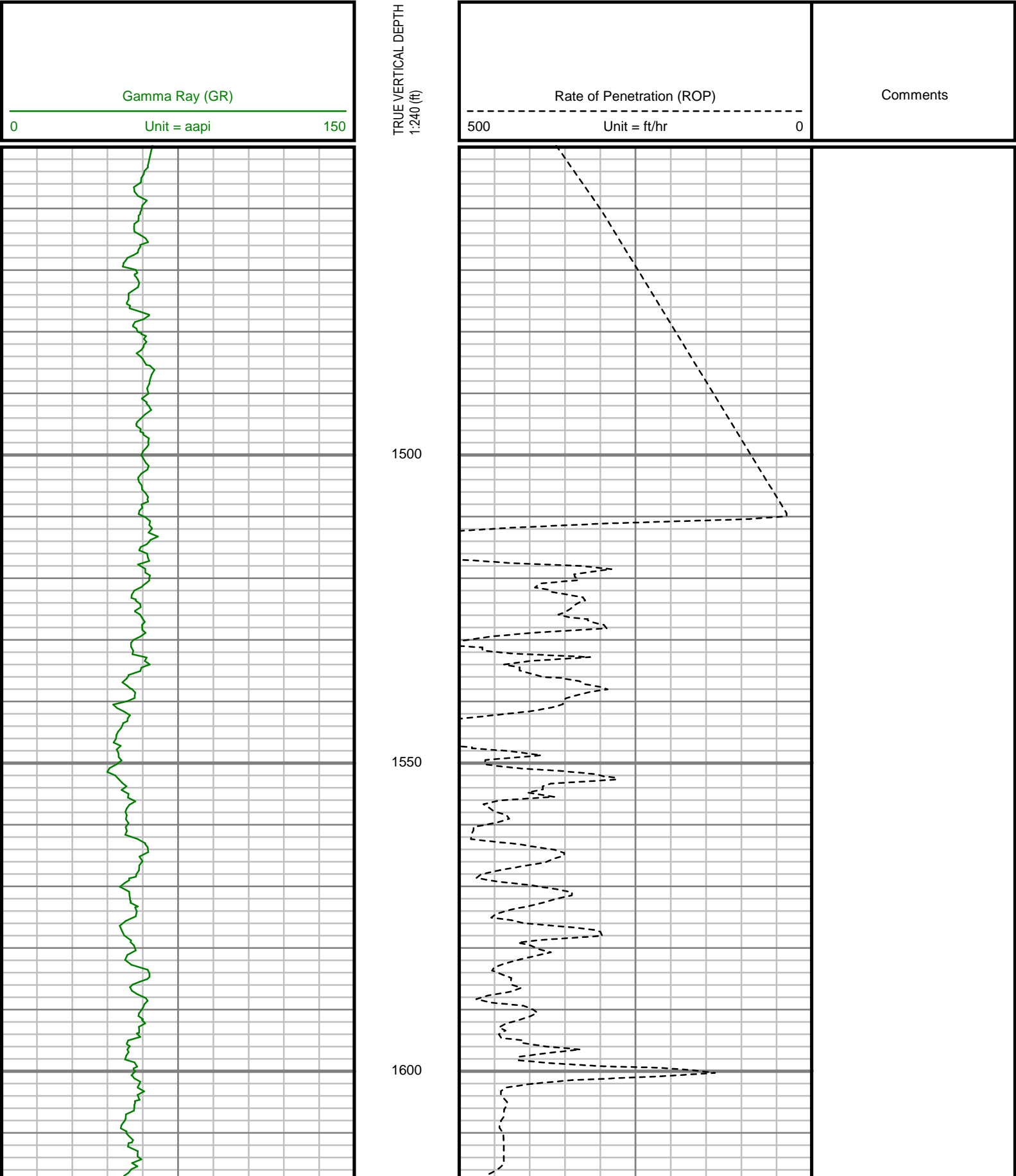


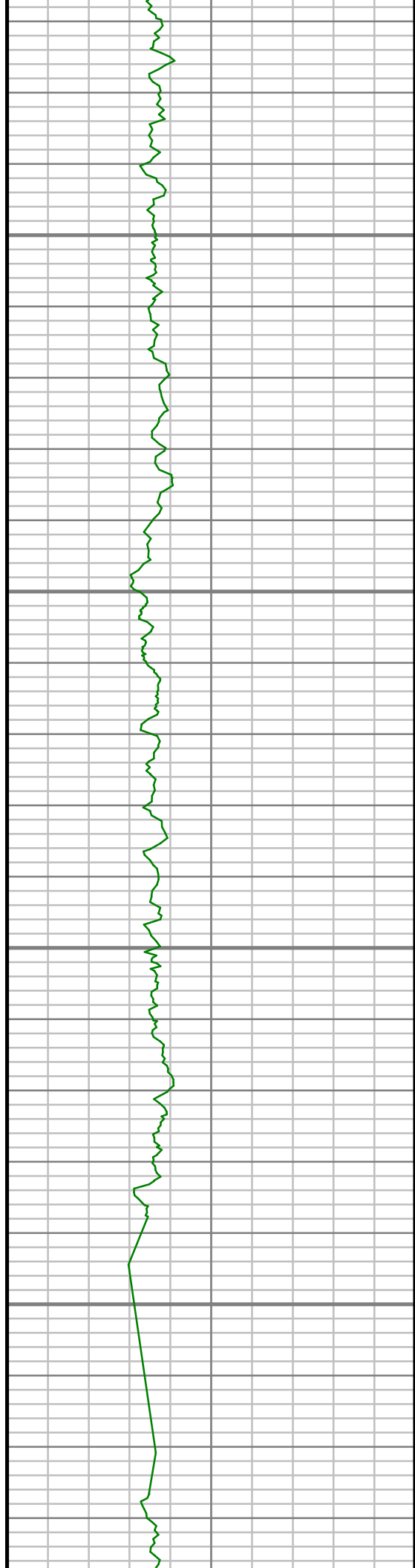
5" = 100' FEET TVD

COMPANY : ENCANA OIL AND GAS (U.S.A.) INC WELL : NEWNAM 2E-32H-C264 FIELD : WATTENBERG COUNTY : WELD STATE : COLORADO COUNTRY : U.S.A. UWI : 05-123-39776										COMPANY : ENCANA OIL AND GAS (U.S.A.) INC WELL : NEWNAM 2E-32H-C264 FIELD : WATTENBERG COUNTY : WELD STATE : COLORADO COUNTRY : U.S.A. UWI : 05-123-39776																			
DEPTH REF. : RKB REF. HEIGHT : 13.000 ft GROUND LEVEL : 4953.000 ft										WELL LOCATION LAT:40°6'5.281"N LONG:104°34'42.838"W N:1281147.94 ft E:3257754.33 ft SEC:32 TWP:2N RANGE:64W										OTHER SERVICES DIRECTIONAL ROP									
BOREHOLE RECORD										DEVIATION RECORD																			
HOLE SIZE in		FROM ft		TO ft		INCLINATION deg		FROM ft		TO ft																			
12.25		0		1040		0 - 9		0		1040																			
8.25		1040		7440		9 - 86		1040		7440																			
6.125		7440		11410		86 - 92		7440		11410																			
CASING RECORD																													
CASING SIZE in		FROM ft		TO ft																									
9.625		0		1026																									
7		0		7426																									
										DRILLING CO.: ENSIGN RIG: 124 LWD UNIT NO.: C70-EM4#8DISTRICT: CASPER SPUD DATE: 11/27/2014 LWD START DATE: 11/28/2014 LWD END DATE: 12/06/2014																			
										DEPTH: 5000 ft DEPTH: 11410 ft TOTAL DEPTH: 11410 ft																			

All interpretations are opinions based on inferences from electrical or other measurements and we cannot, and do not guarantee the accuracy or correctness of any interpretations, and we shall not, except in the case of gross or willful negligence on our part, be liable or responsible for any loss, costs, damages or expenses incurred or sustained by anyone resulting from any interpretation made by any of our officers, agents or employees. These interpretations are also subject to our general terms and conditions as set out in our current price schedule.

ENCANA OIL AND GAS (U.S.A.) INC
NEWNAM 2E-32H-C264
WATTENBERG FIELD
WELD COUNTY, COLORADO
05-123-39776



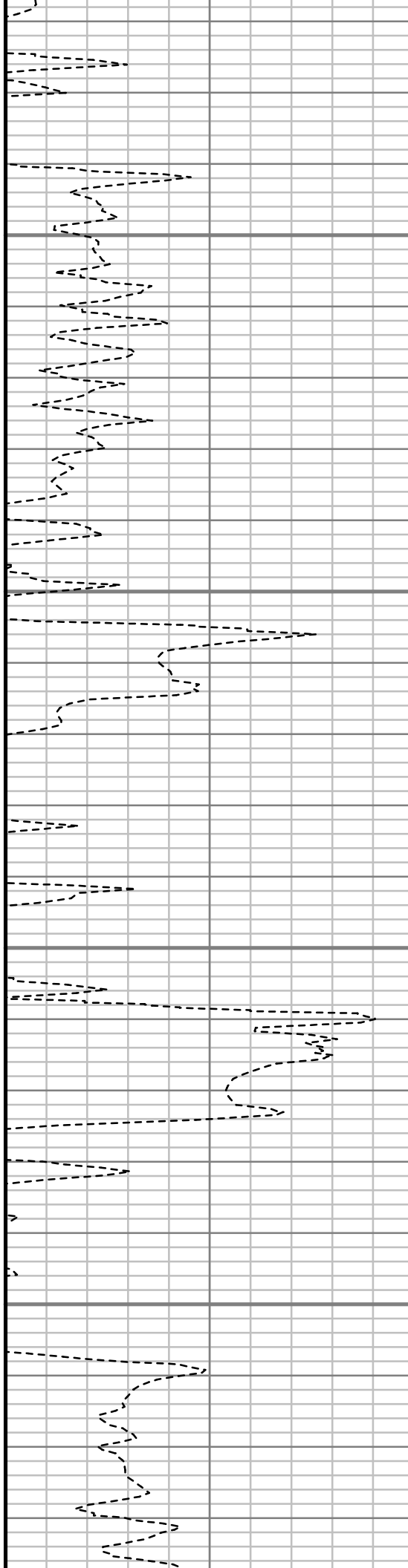


1650

1700

1750

1800





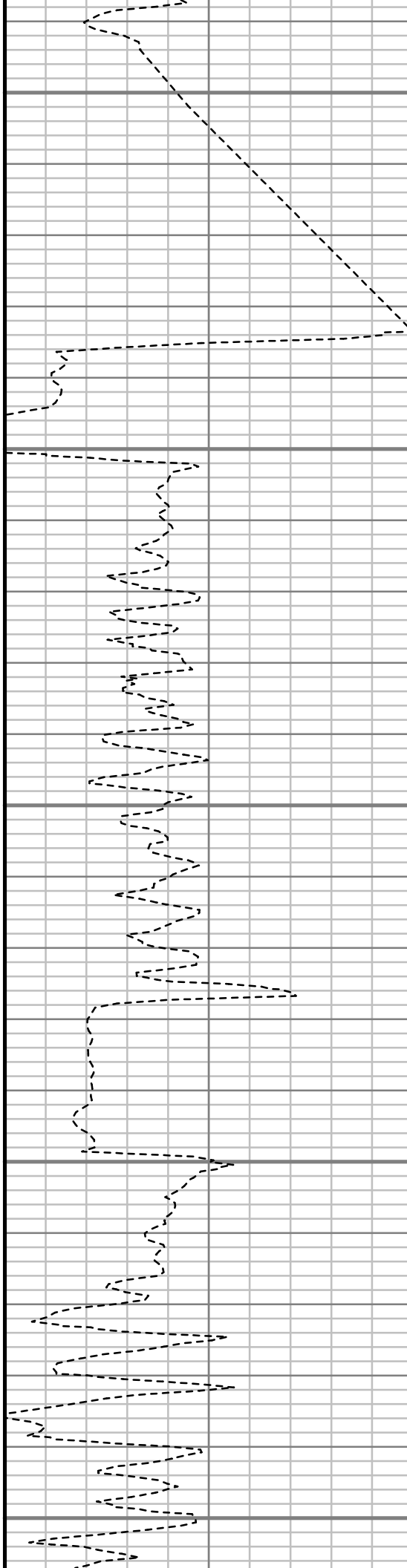
1850

1900

1950

2000

2050



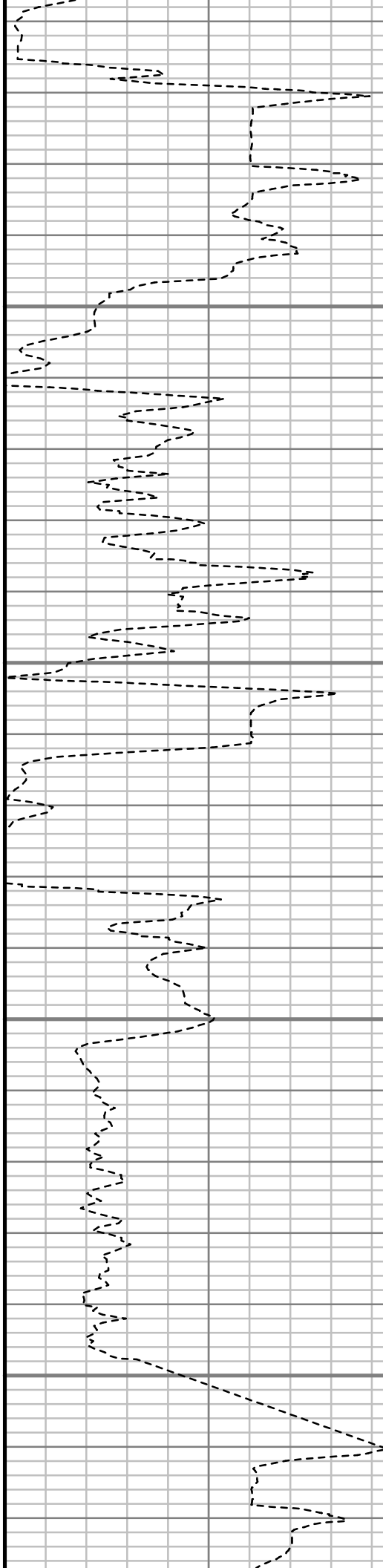


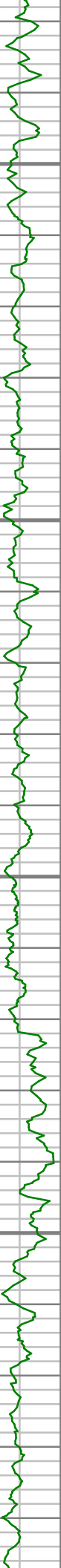
2100

2150

2200

2250



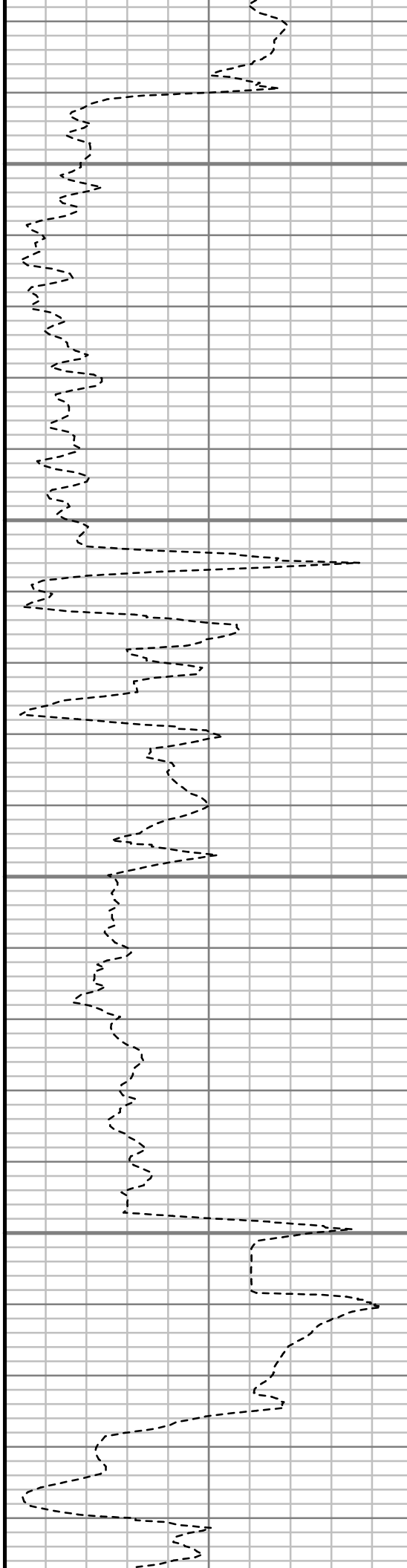


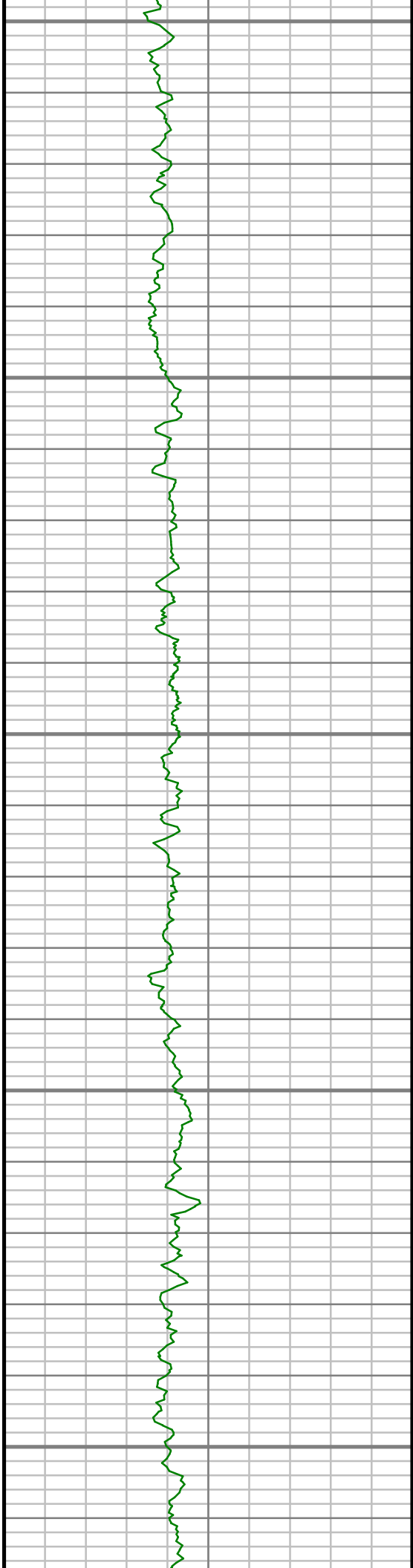
2300

2350

2400

2450





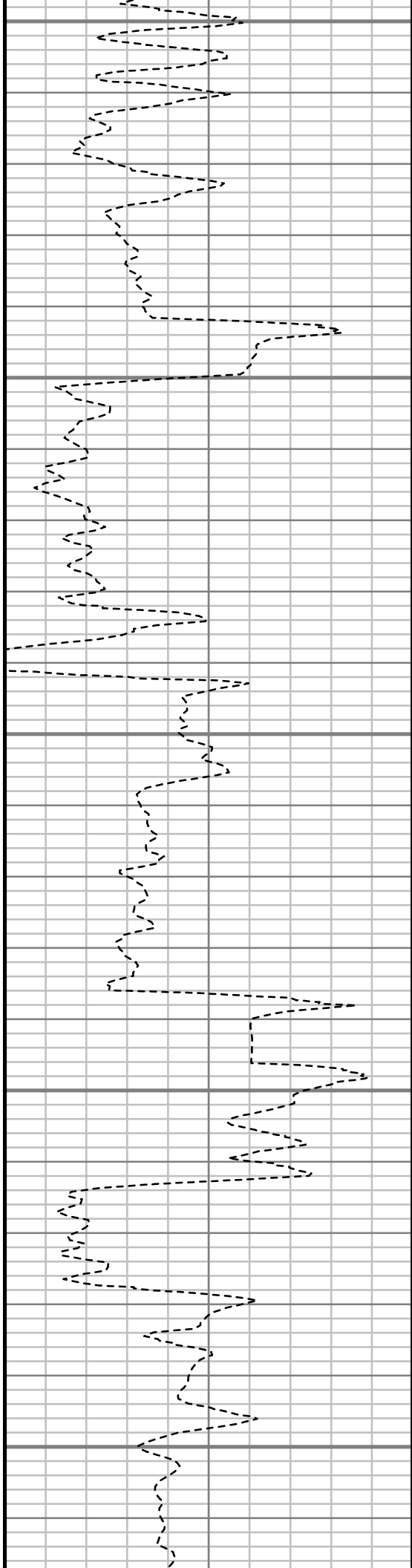
2500

2550

2600

2650

2700



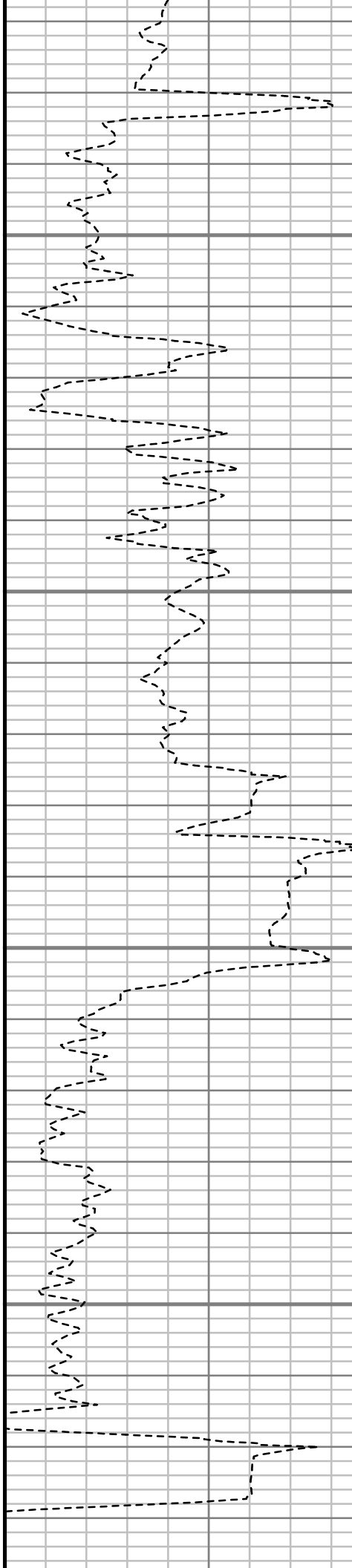


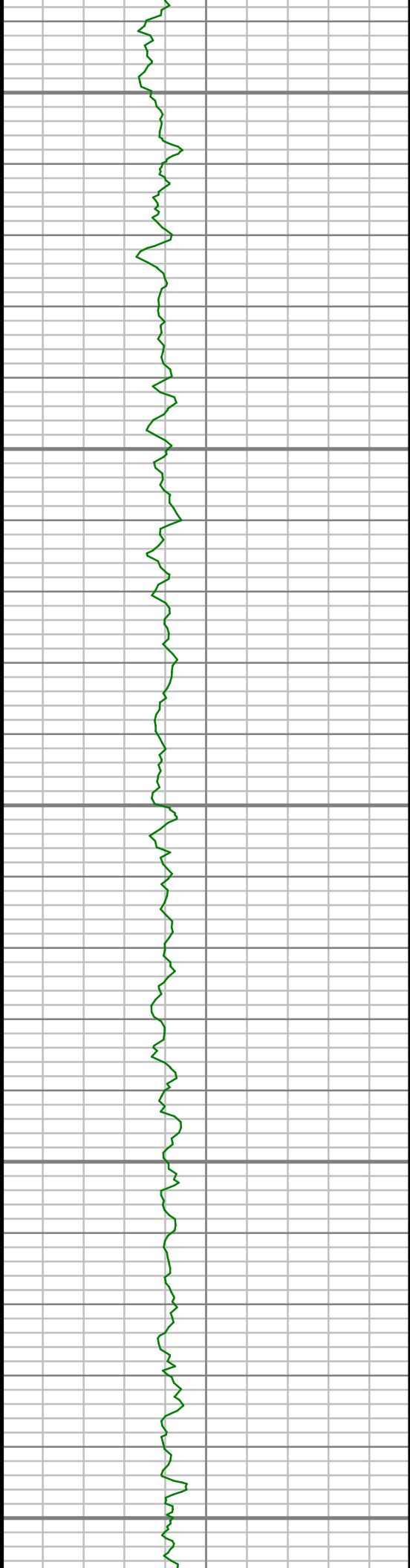
2750

2800

2850

2900





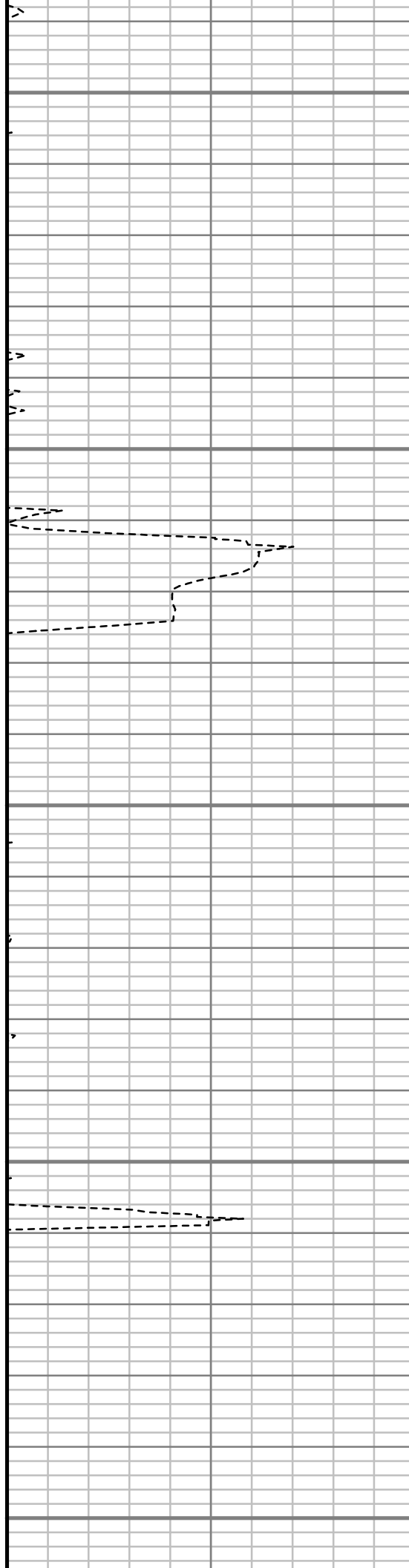
2950

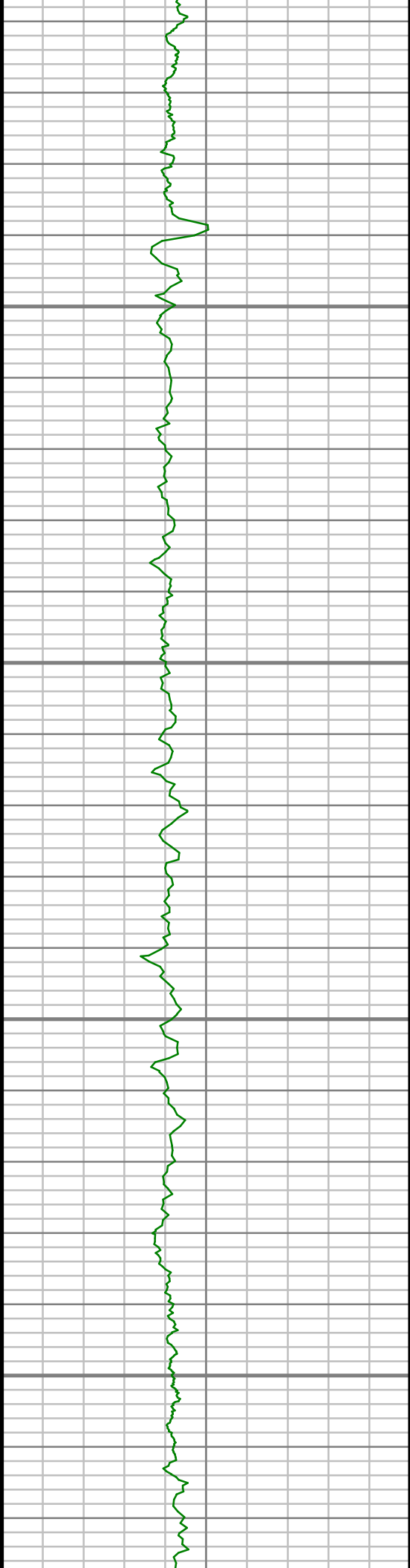
3000

3050

3100

3150



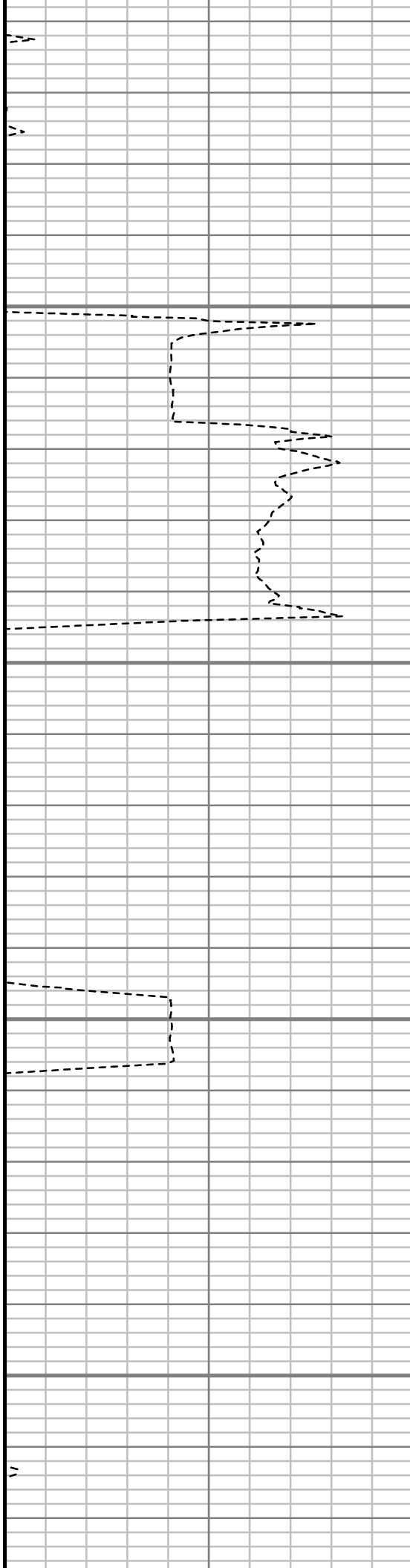


3200

3250

3300

3350



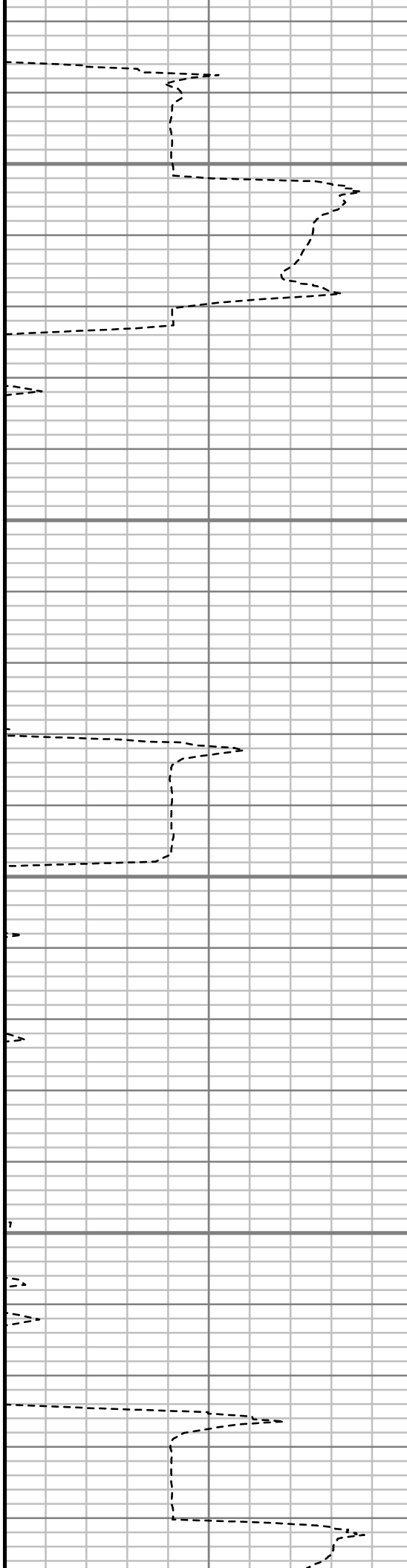


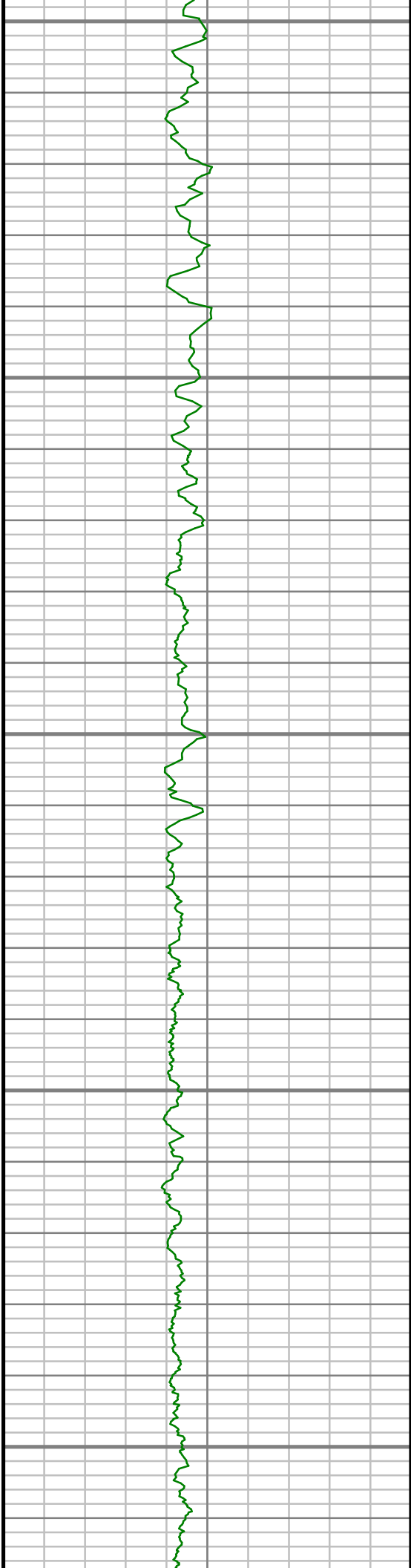
3400

3450

3500

3550





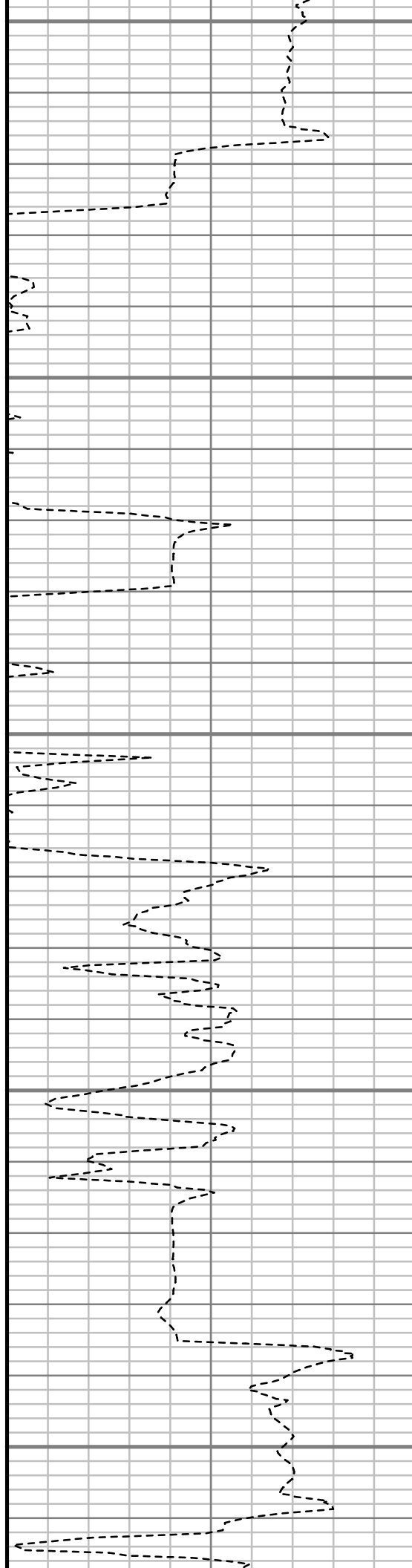
3600

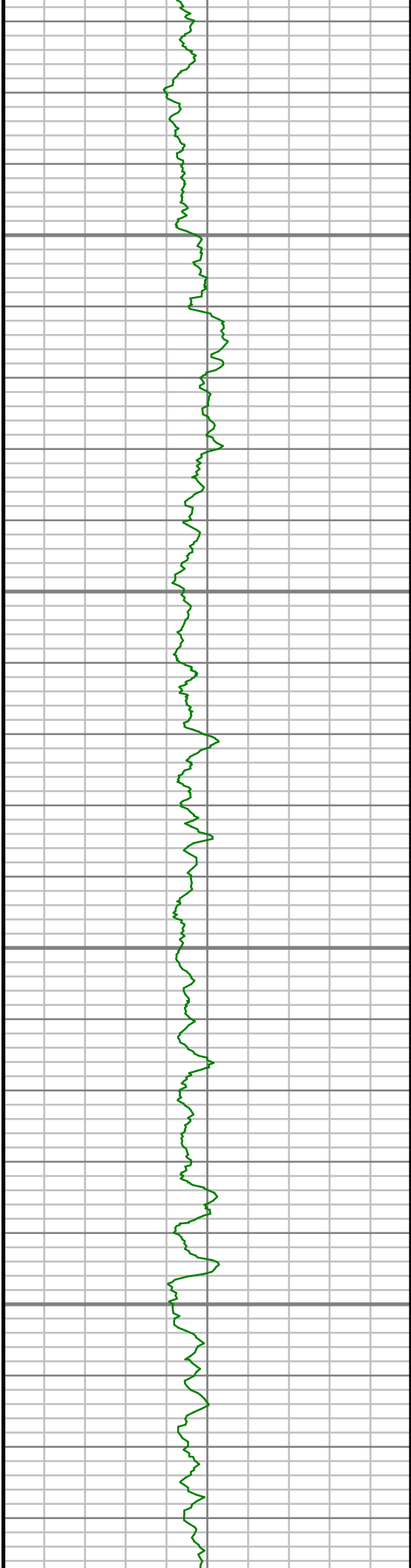
3650

3700

3750

3800



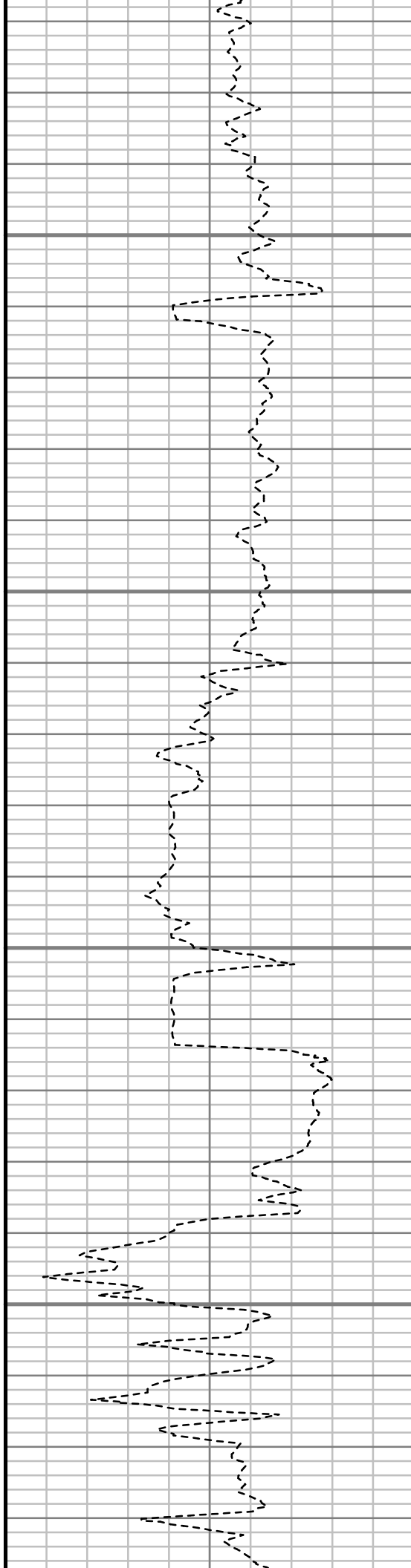


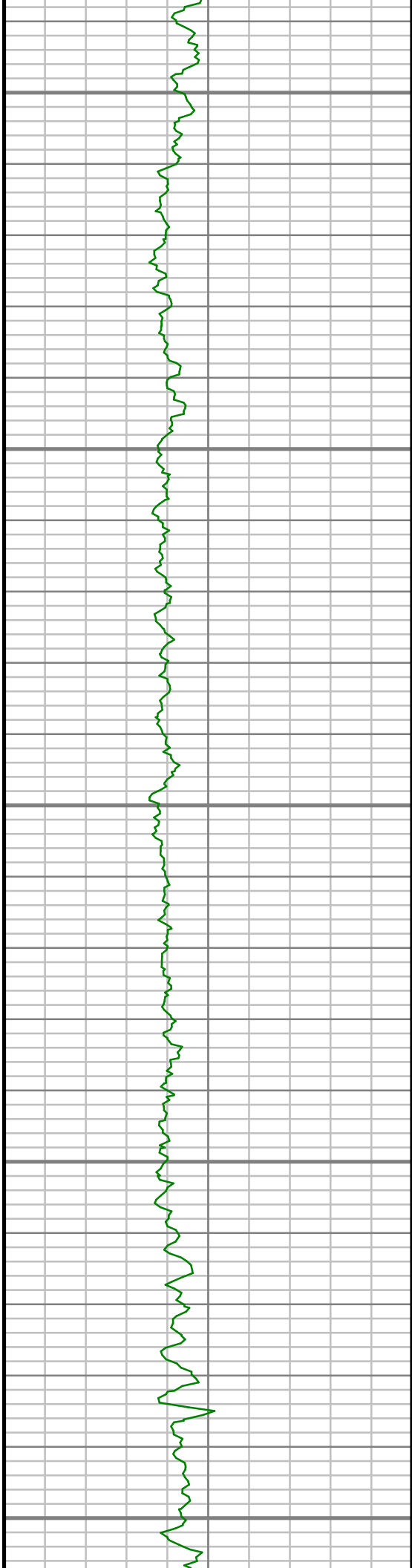
3850

3900

3950

4000





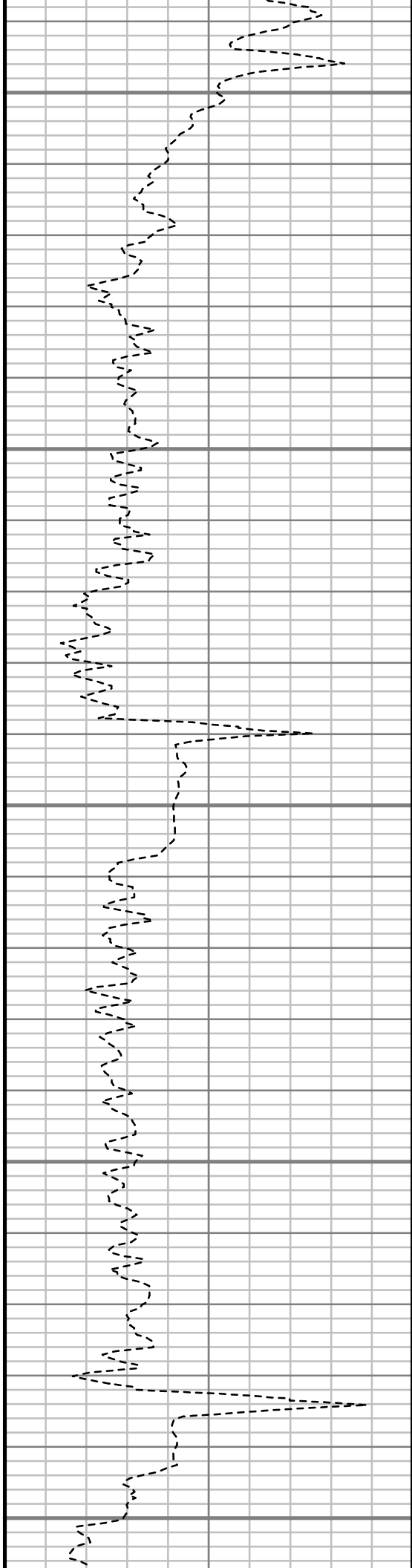
4050

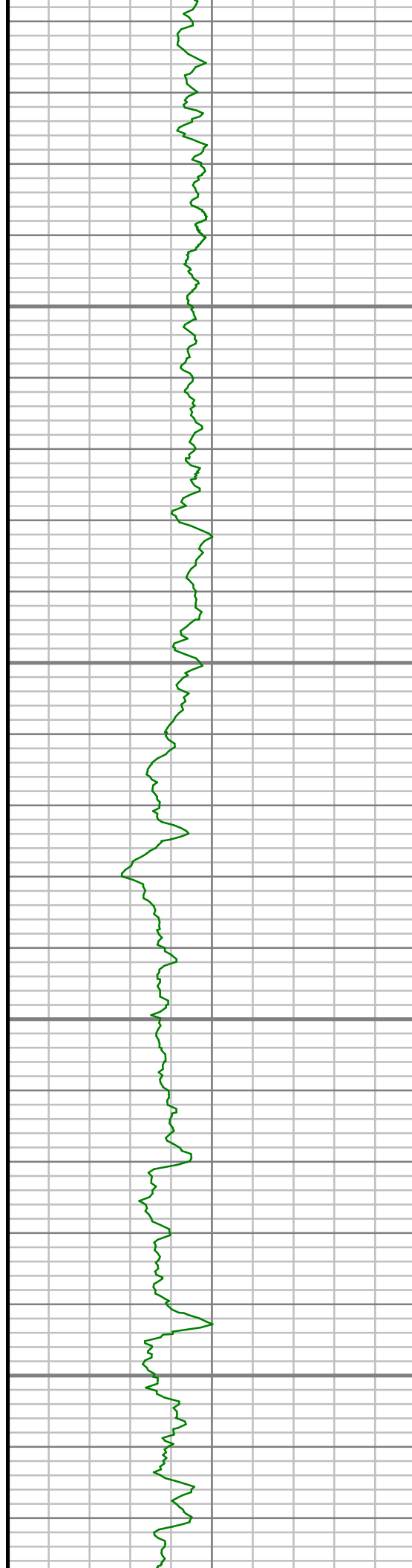
4100

4150

4200

4250



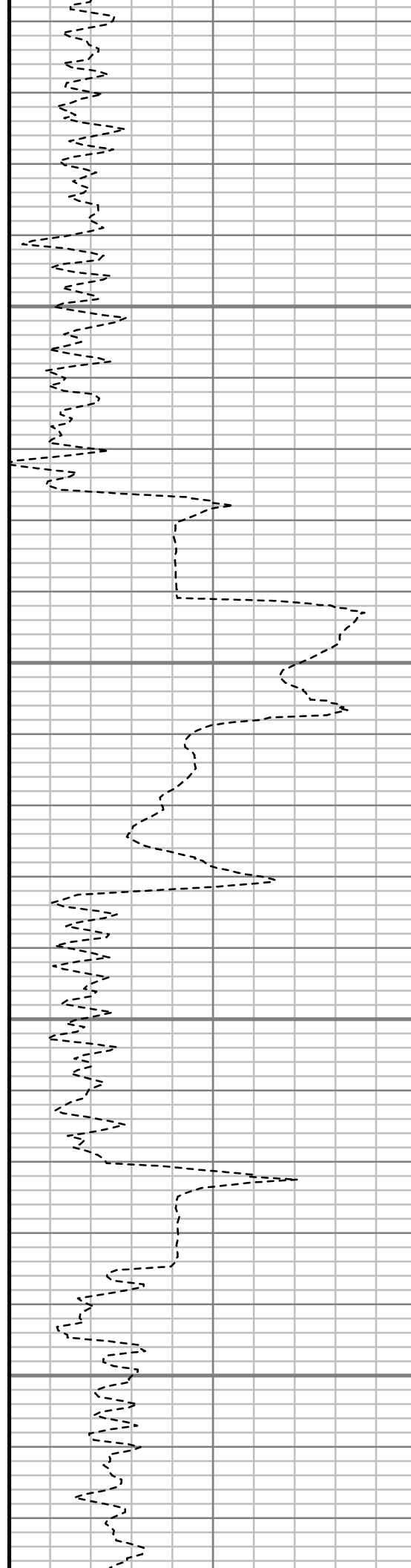


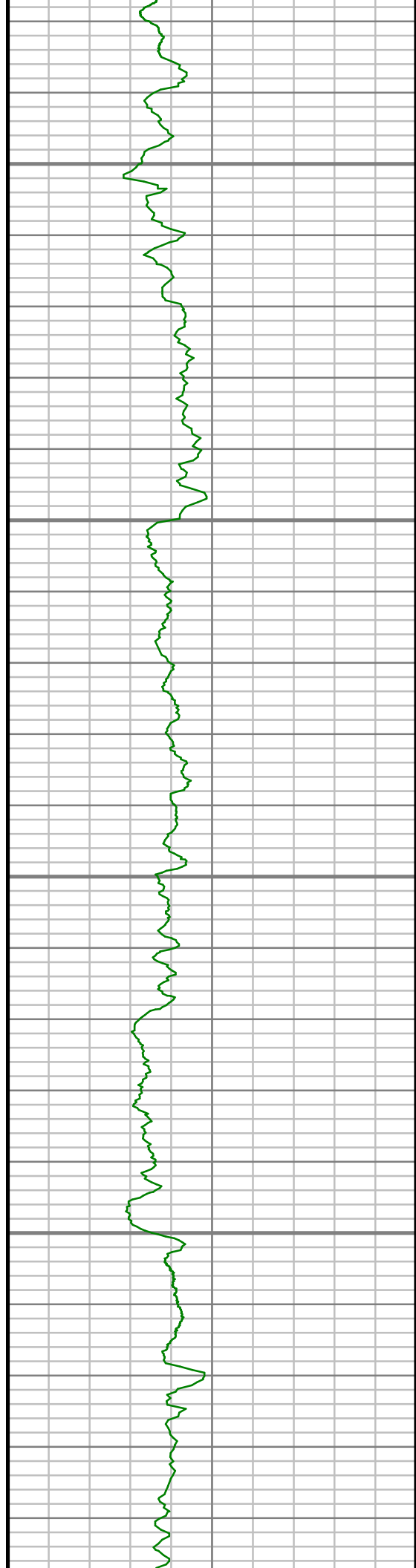
4300

4350

4400

4450



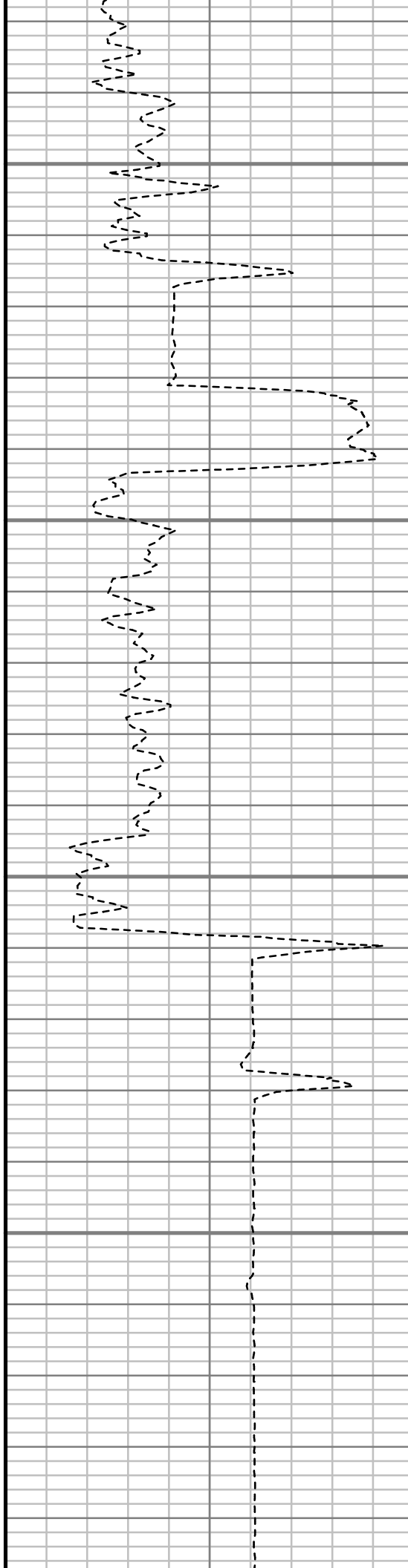


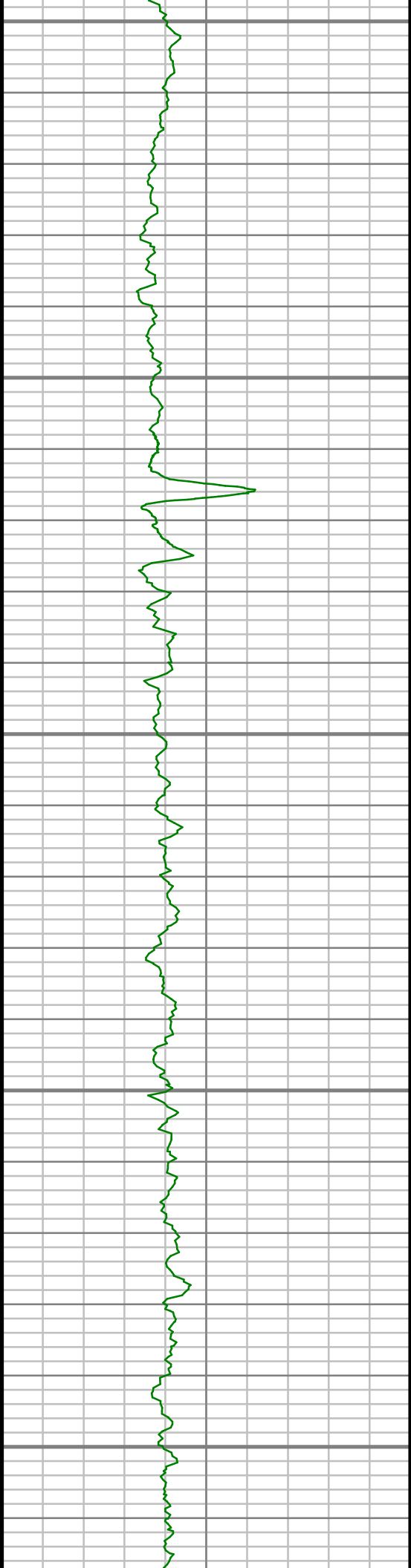
4500

4550

4600

4650





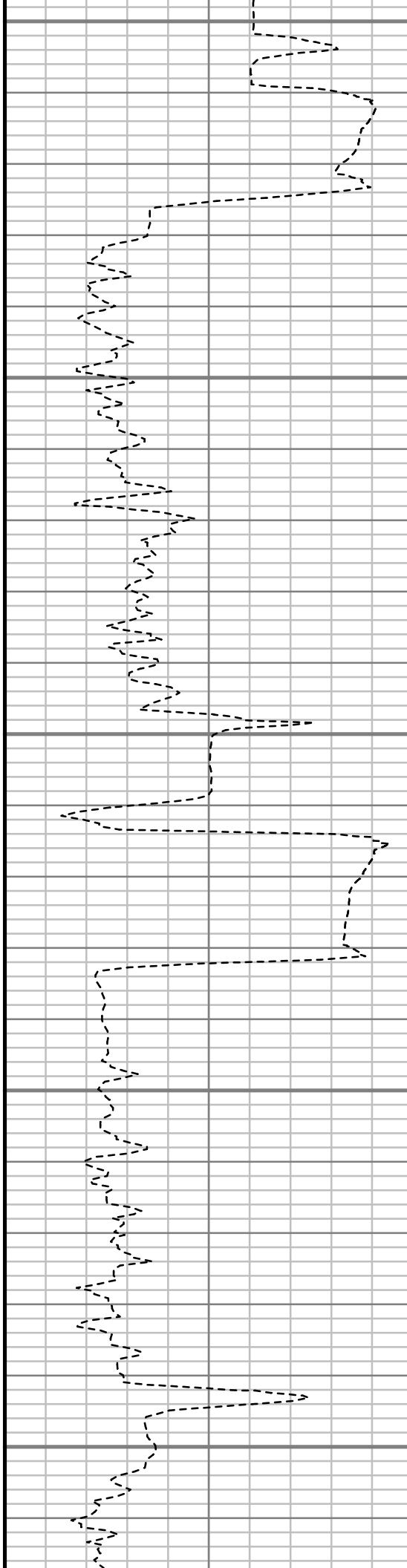
4700

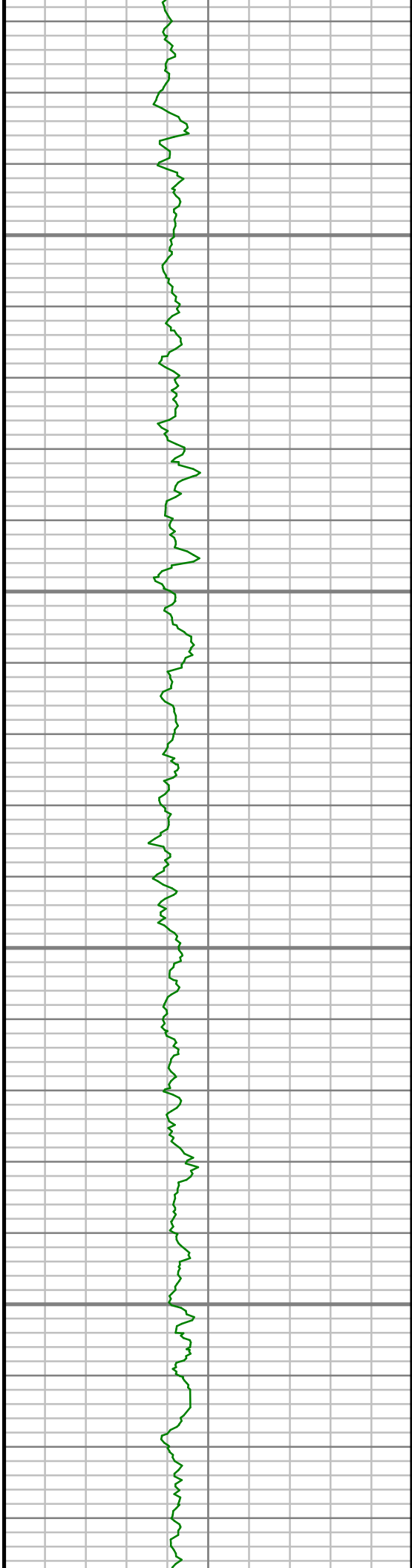
4750

4800

4850

4900



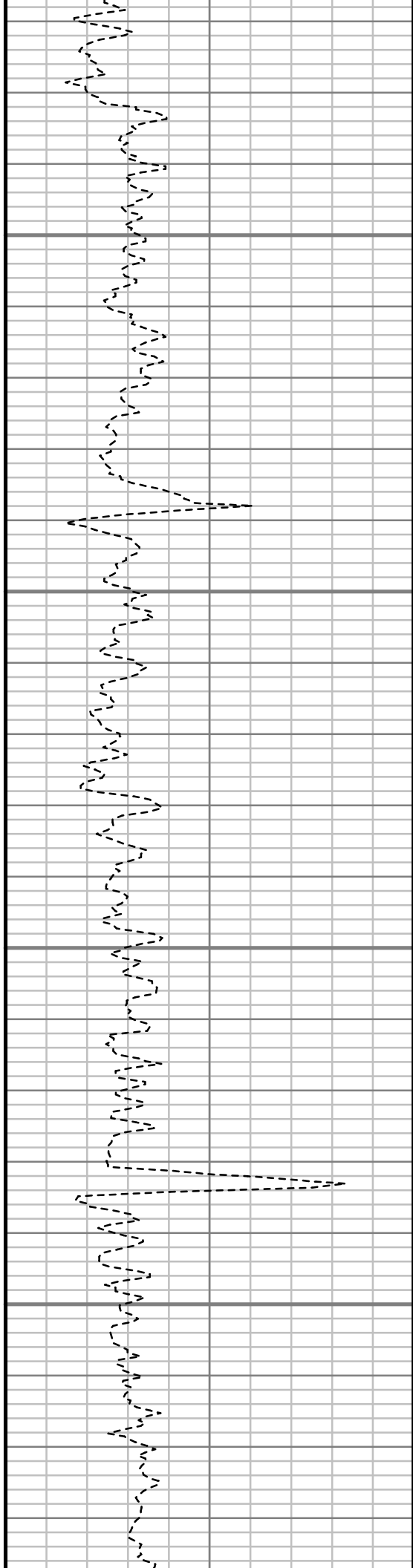


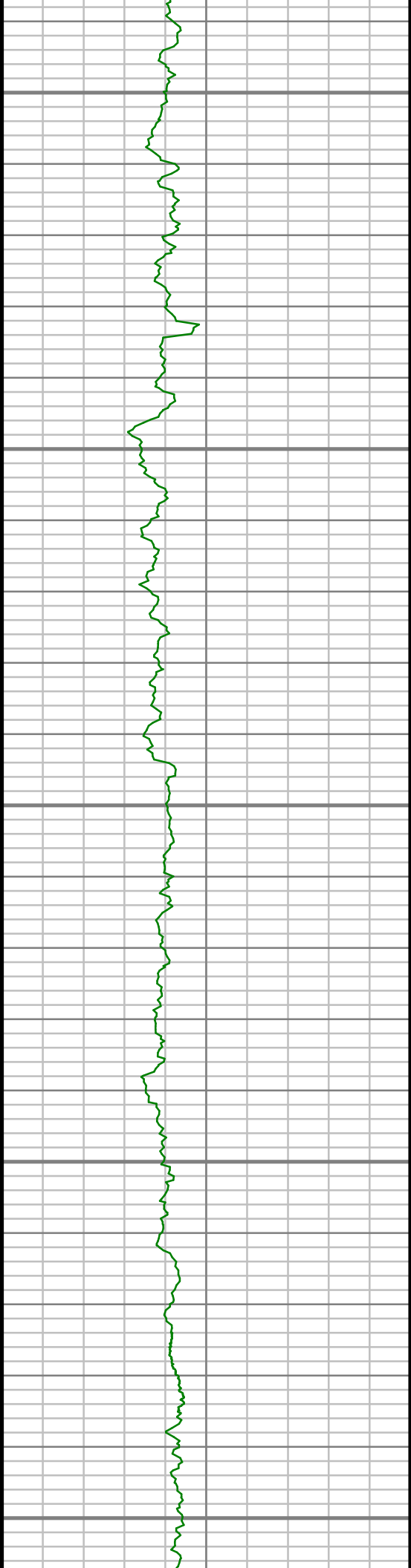
4950

5000

5050

5100





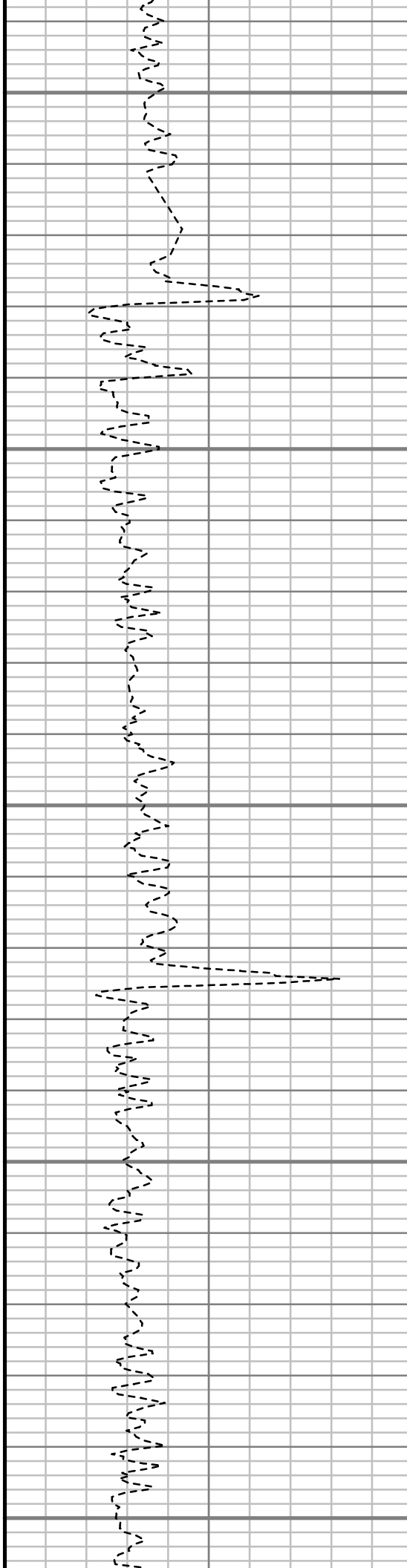
5150

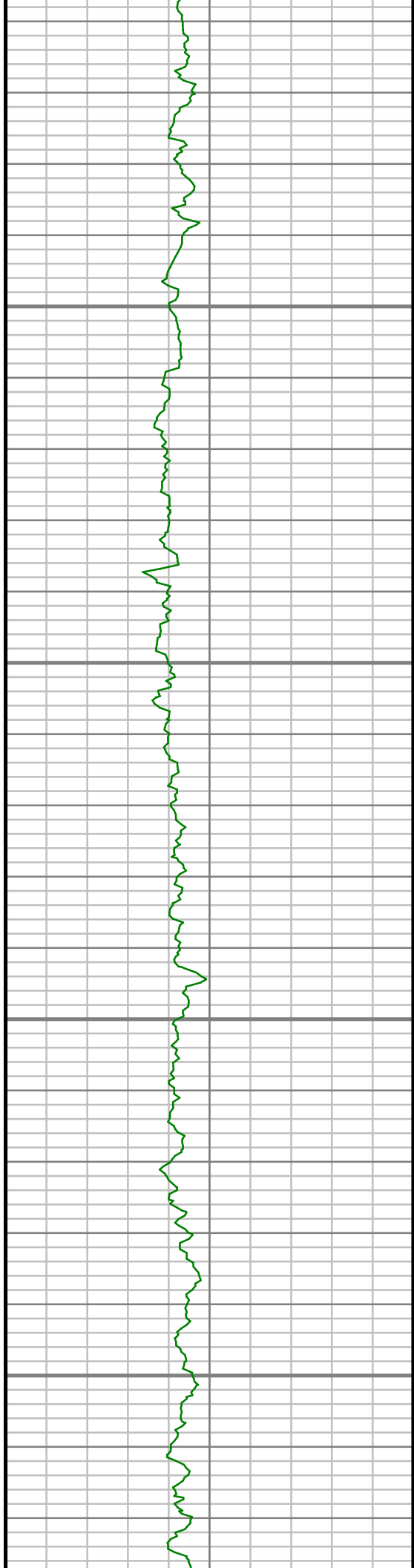
5200

5250

5300

5350



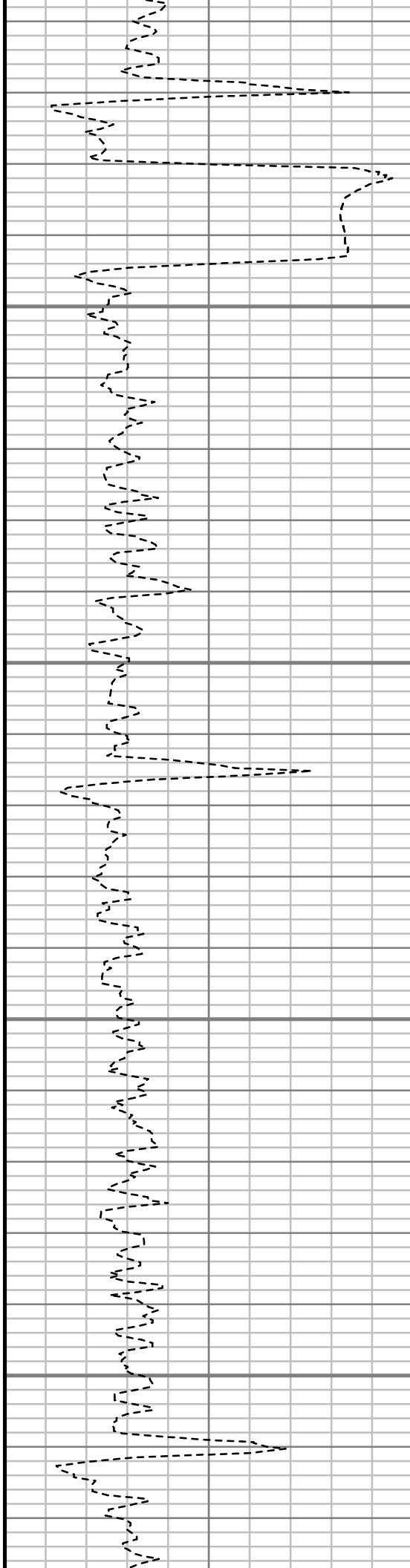


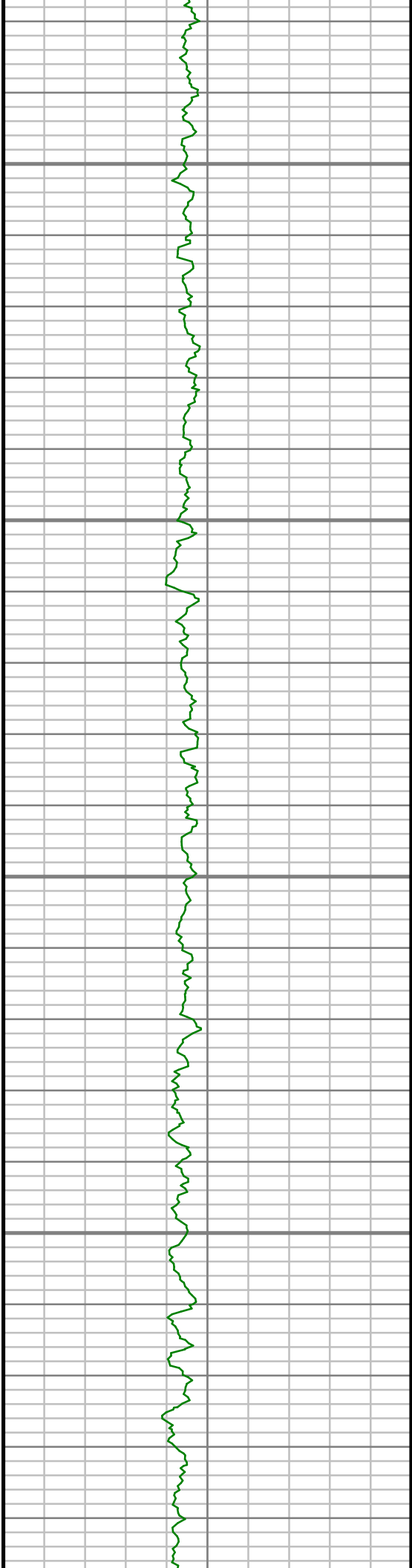
5400

5450

5500

5550



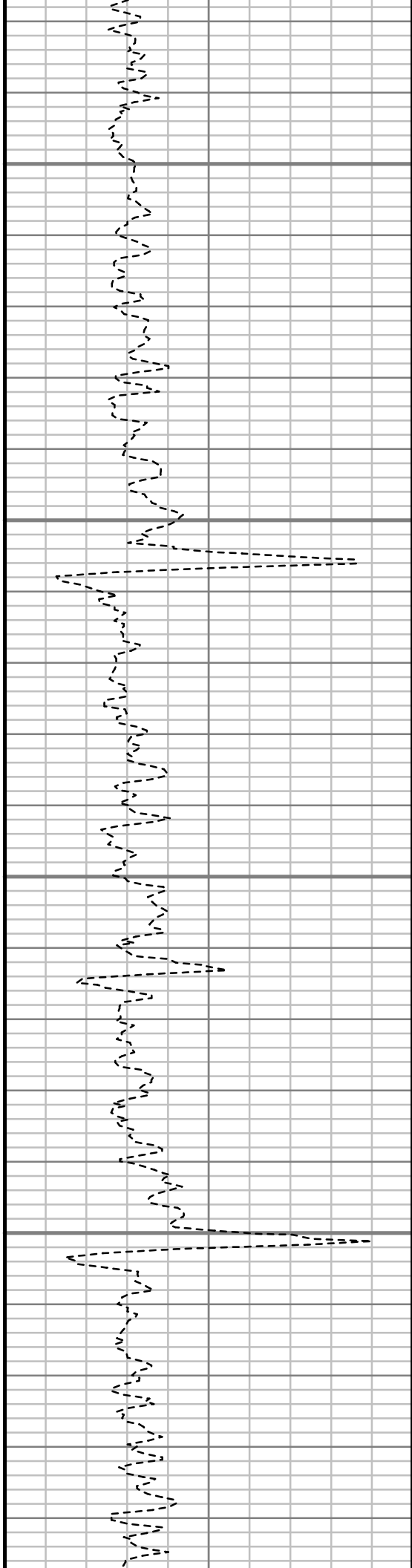


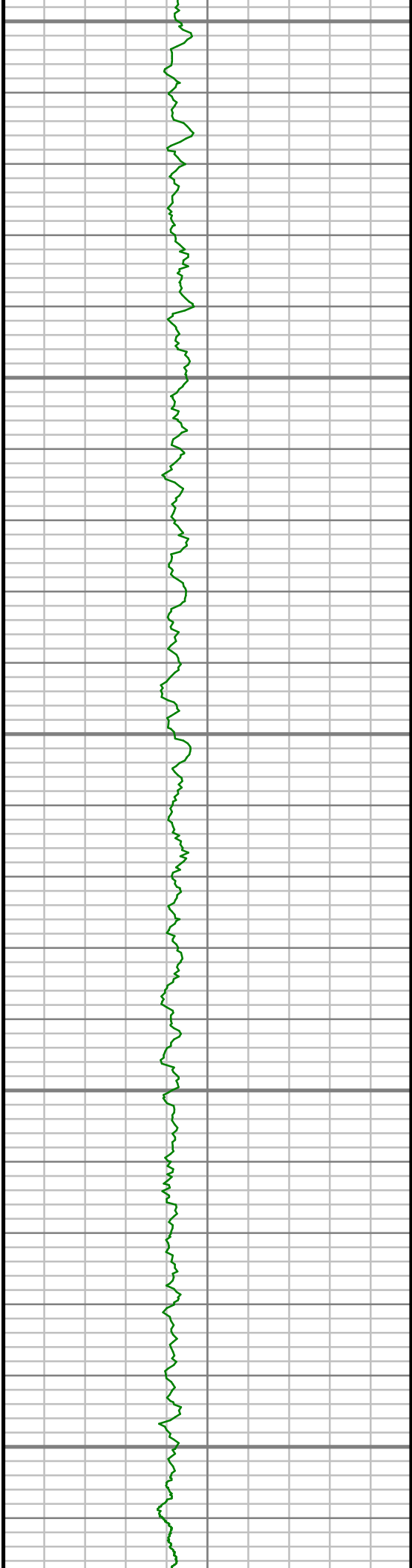
5600

5650

5700

5750





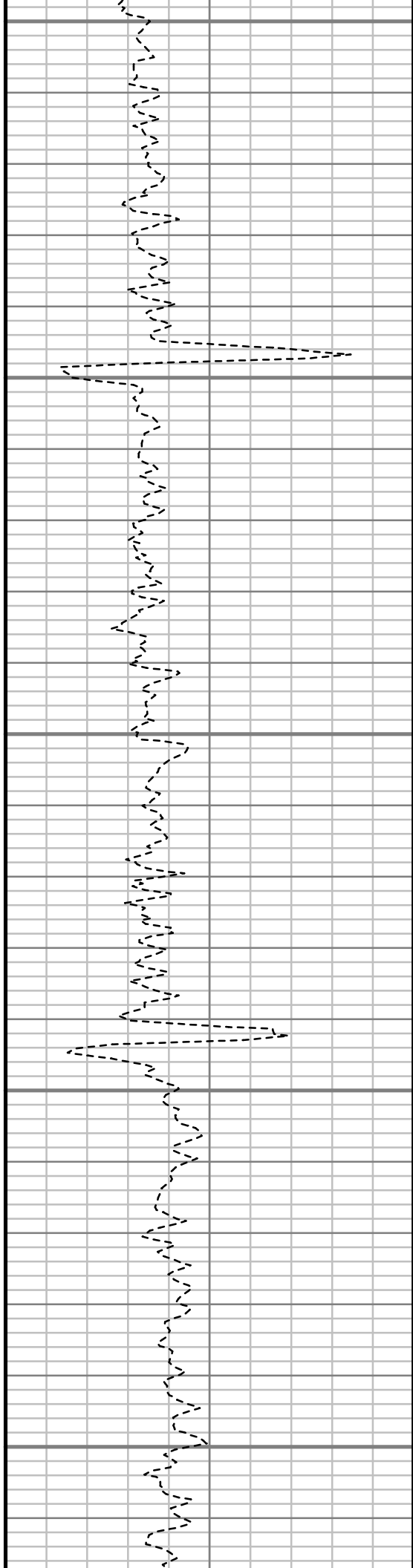
5800

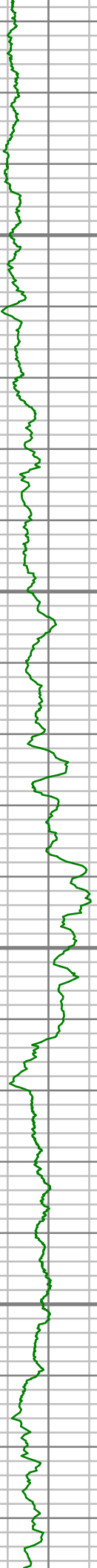
5850

5900

5950

6000



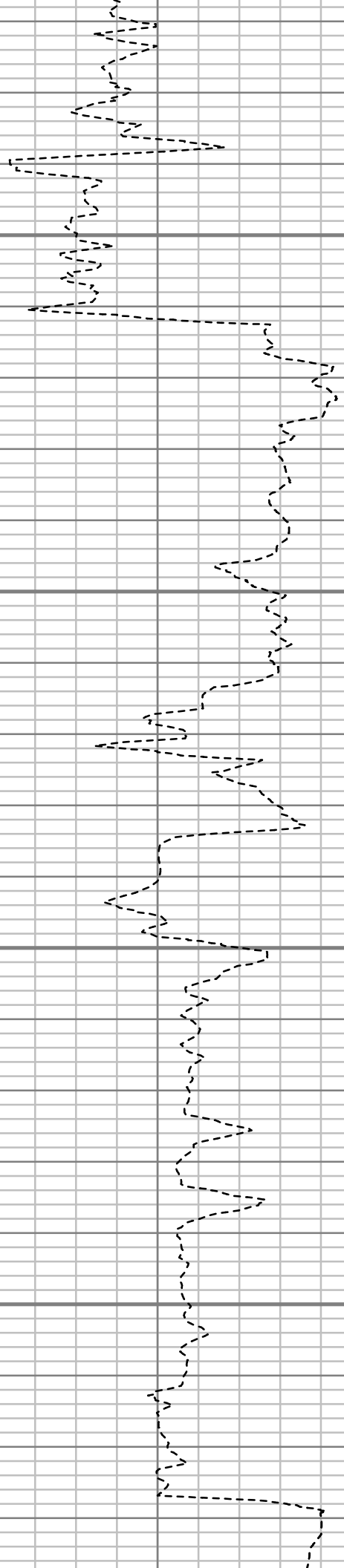


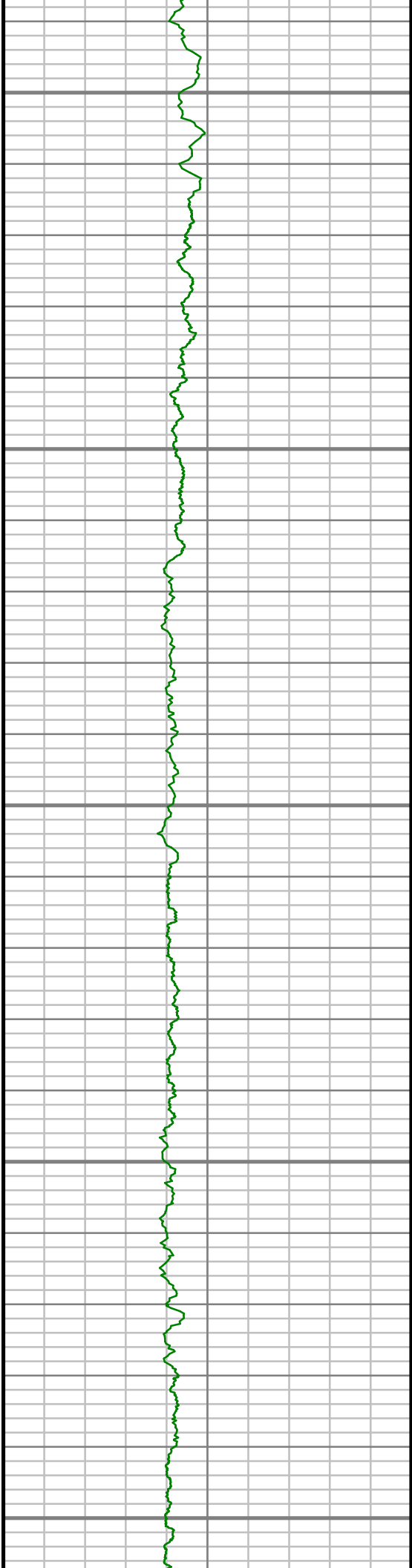
6050

6100

6150

6200





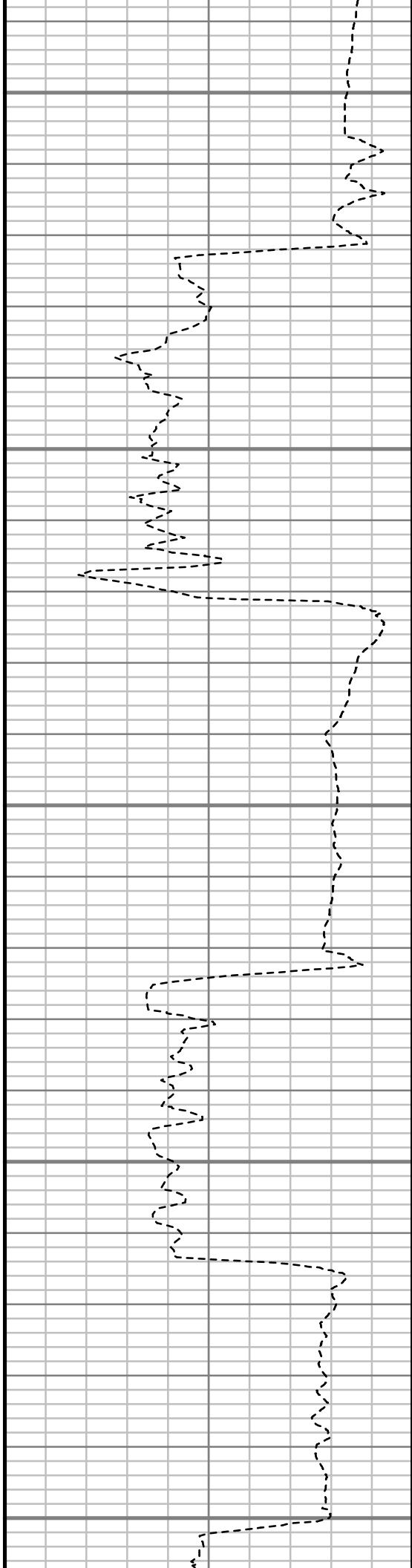
6250

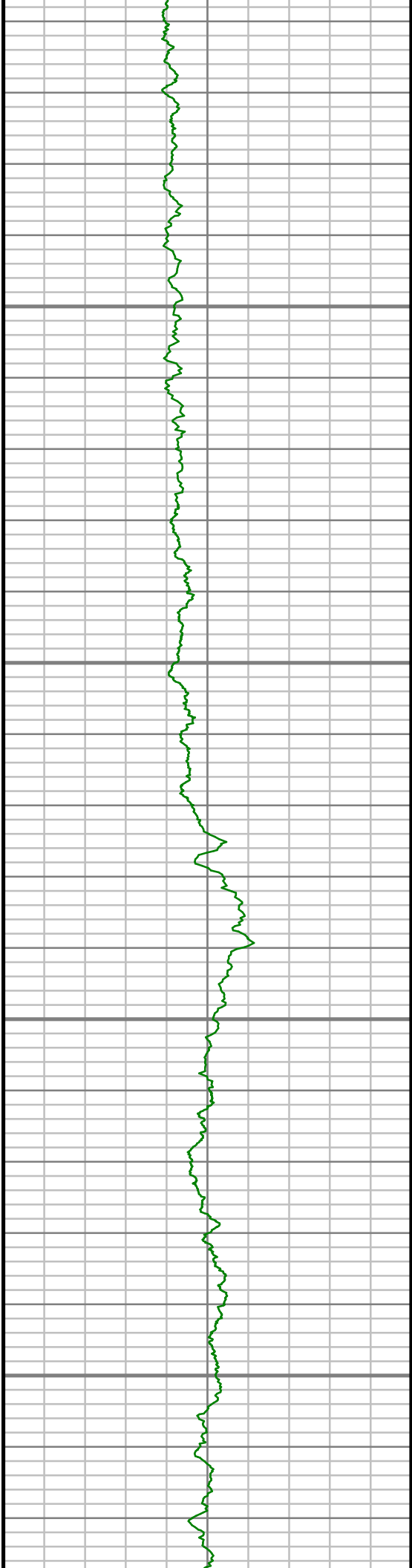
6300

6350

6400

6450



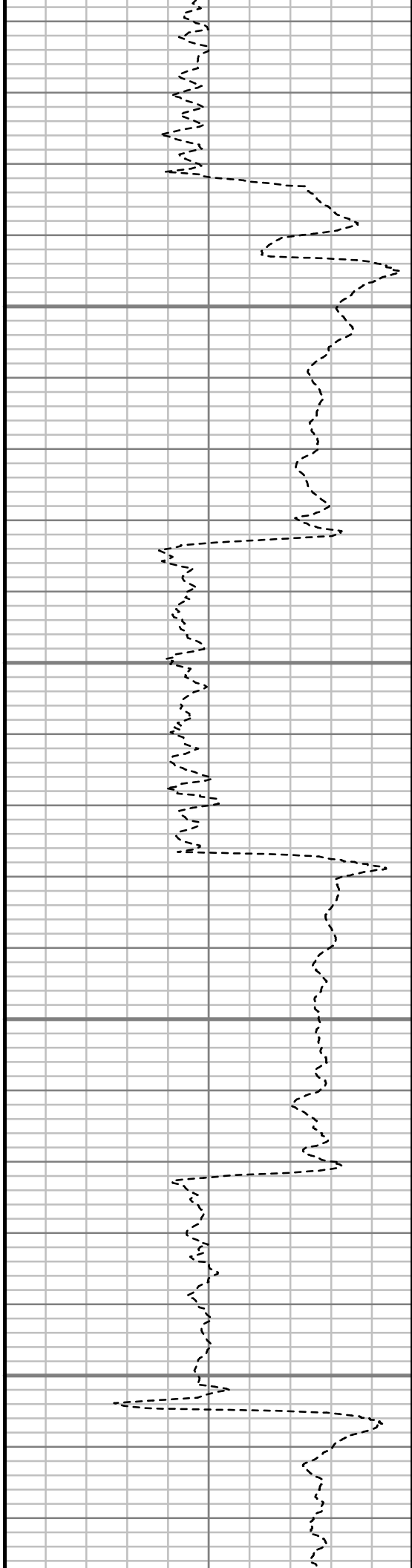


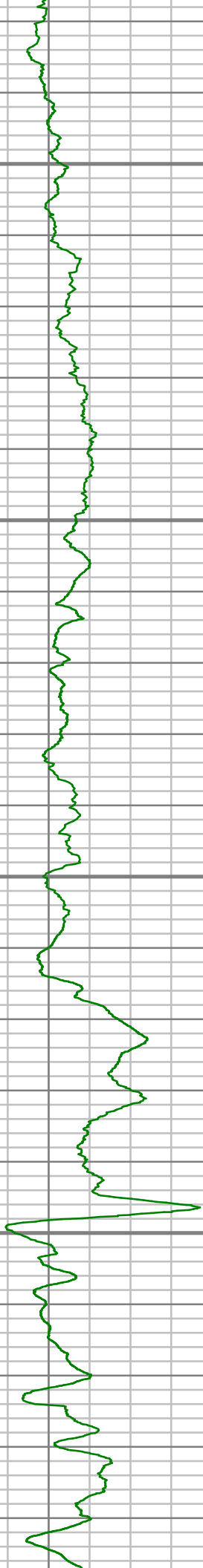
6500

6550

6600

6650



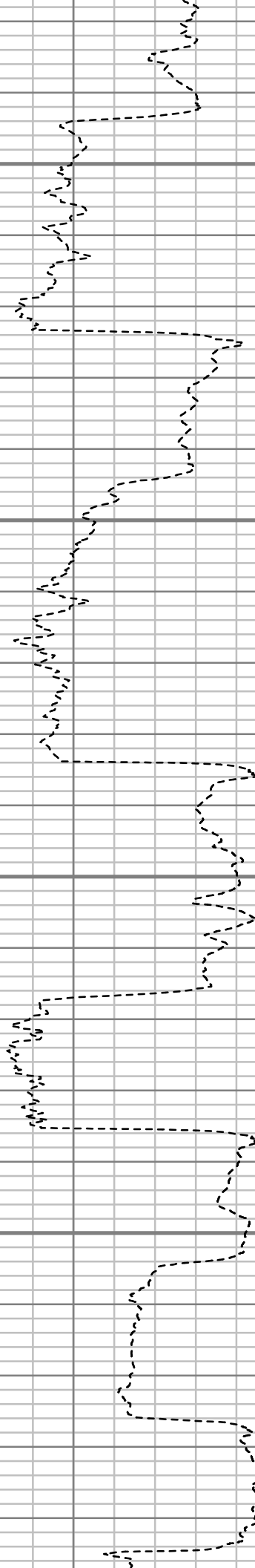


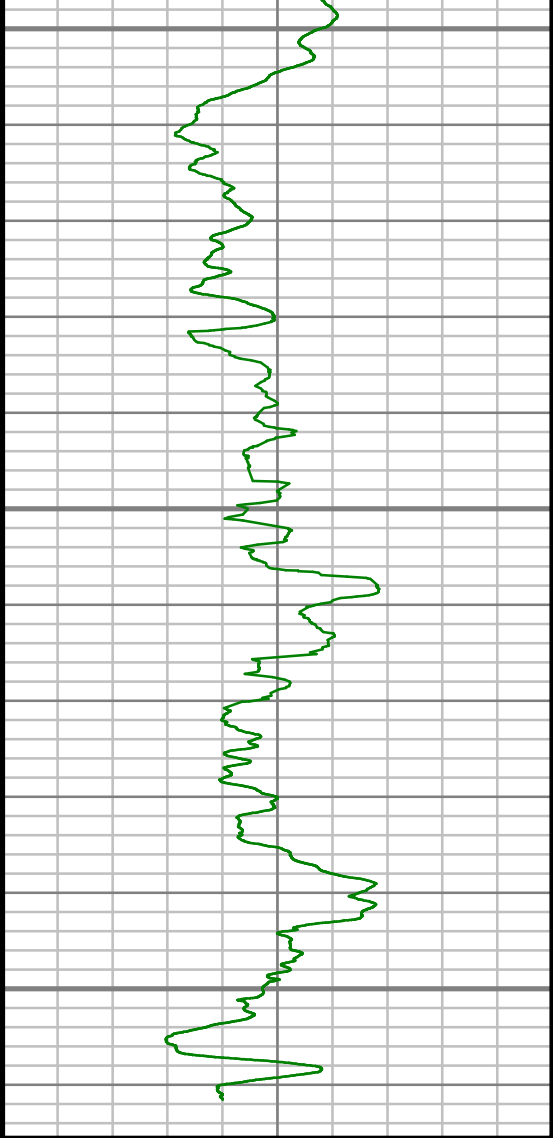
6700

6750

6800

6850





Gamma Ray (GR)

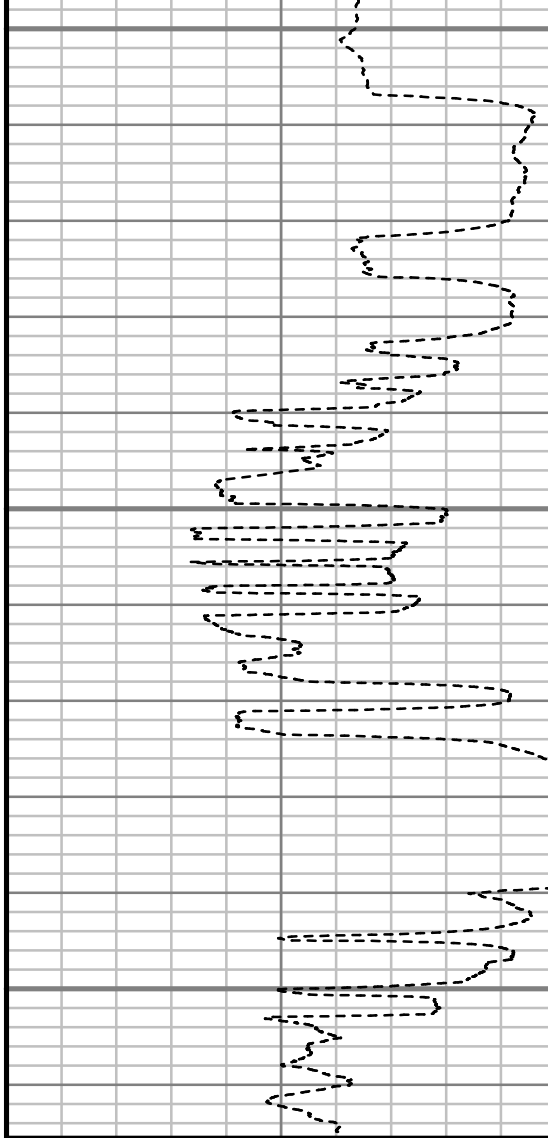
0 Unit = aapi 150

6900

6950

7000

TRUE VERTICAL DEPTH
1-240 (ft)



Rate of Penetration (ROP)

500 Unit = ft/hr 0

Comments



MWD Survey Report

Well Location	NEWNAM
Well Name	NEWNAM 2E-32H-C264
Survey Date	11/25/2014
Latitude	40°6'5.281"N
Longitude	104°34'42.838"W
Btotal	52517 nT
Dip	66.71 deg
Magnetic Declination	8.37 deg
North Reference	True North
Grid Correction	None
Depth Reference	RKB (13.00 ft)
Calculation Method	Minimum Curvature
Section (VS) Ref	0.00N (ft), 0.00E (ft), 180.00Azim (deg)
Operator(s)	J. SMITH, M. SMITH, T. MORGAN, T. WHEELER

Well Notes

SURVEYS FROM 100 FT. - 960 FT. WERE ACQUIRED BY VEST GYRO.

SURVEYS FROM 1085 FT. - 11346 FT. WERE ACQUIRED BY SCIENTIFIC DRILLING INTERNATIONAL MWD.

MD	Inc	Azim	TVD	VS	+N/-S	+E/-W	Closure Direction	Closure Distance	DLS
ft	deg	deg	ft	ft	ft	ft	deg	ft	"/100ft
0.00	0.00	0.00	0.00	0.00	0.00	0.00	0.00	0.00	Invalid
100.00	0.45	292.44	100.00	-0.15	0.15	-0.36	292.44	0.39	0.45
200.00	0.74	258.58	199.99	-0.17	0.17	-1.36	277.21	1.37	0.44
300.00	0.52	244.84	299.99	0.15	-0.15	-2.40	266.45	2.41	0.27
400.00	0.57	247.33	399.98	0.53	-0.53	-3.27	260.74	3.32	0.06
500.00	2.09	300.93	499.96	-0.21	0.21	-5.30	272.29	5.30	1.81
600.00	3.64	305.59	599.83	-3.00	3.00	-9.44	287.61	9.91	1.57
700.00	5.70	308.99	699.49	-7.97	7.97	-15.88	296.65	17.77	2.08
800.00	7.11	299.09	798.87	-14.10	14.10	-25.15	299.28	28.84	1.79
900.00	7.39	290.91	898.07	-19.41	19.41	-36.57	297.96	41.40	1.07
960.00	8.51	281.32	957.50	-21.66	21.66	-44.53	295.94	49.51	2.89
1085.00	8.35	287.44	1081.15	-26.19	26.19	-62.25	292.82	67.54	0.73
1271.00	11.41	293.93	1264.37	-37.70	37.70	-91.95	292.29	99.38	1.75
1457.00	11.46	292.47	1446.68	-52.22	52.22	-125.84	292.54	136.25	0.16
1647.00	11.97	290.16	1632.73	-66.23	66.23	-161.78	292.26	174.82	0.37
1838.00	9.78	294.14	1820.29	-79.69	79.69	-195.18	292.21	210.83	1.22
2028.00	8.54	294.28	2007.86	-92.09	92.09	-222.76	292.46	241.05	0.65
2219.00	8.74	294.22	2196.69	-103.88	103.88	-248.92	292.65	269.73	0.10
2409.00	10.00	290.96	2384.16	-115.70	115.70	-277.49	292.63	300.64	0.72

MD	Inc	Azim	TVD	VS	+N/-S	+E/-W	Closure Direction	Closure Distance	DLS
ft	deg	deg	ft	ft	ft	ft	deg	ft	°/100ft
2600.00	10.67	288.38	2572.06	-127.20	127.20	-309.74	292.33	334.85	0.42
2791.00	10.00	288.44	2759.96	-138.02	138.02	-342.24	291.96	369.03	0.35
2981.00	11.15	290.64	2946.73	-149.71	149.71	-375.08	291.76	403.86	0.64
3172.00	8.66	288.99	3134.87	-160.91	160.91	-405.97	291.62	436.69	1.31
3362.00	9.51	289.83	3322.49	-170.89	170.89	-434.26	291.48	466.67	0.45
3552.00	9.31	286.84	3509.93	-180.66	180.66	-463.73	291.29	497.68	0.28
3743.00	10.23	292.75	3698.16	-191.70	191.70	-494.16	291.20	530.04	0.71
3933.00	9.46	293.10	3885.37	-204.35	204.35	-524.08	291.30	562.51	0.41
4124.00	10.62	288.39	4073.44	-216.06	216.06	-555.21	291.26	595.77	0.74
4314.00	9.88	290.14	4260.41	-227.20	227.20	-587.14	291.15	629.56	0.42
4505.00	11.04	286.57	4448.23	-238.05	238.05	-620.05	291.00	664.18	0.69
4695.00	9.65	281.81	4635.14	-246.50	246.50	-653.09	290.68	698.06	0.86
4886.00	6.73	274.99	4824.18	-250.76	250.76	-679.92	290.24	724.68	1.61
5076.00	4.33	272.08	5013.28	-251.98	251.98	-698.17	289.85	742.25	1.27
5266.00	3.21	267.32	5202.87	-252.00	252.00	-710.65	289.52	754.01	0.61
5457.00	1.27	262.24	5393.71	-251.46	251.46	-718.10	289.30	760.85	1.02
5646.00	0.71	260.14	5582.68	-250.98	250.98	-721.33	289.18	763.74	0.30
5837.00	1.55	142.07	5773.66	-248.74	248.74	-720.90	289.04	762.61	1.04

MD	Inc	Azim	TVD	VS	+N/-S	+E/-W	Closure Direction	Closure Distance	DLS
ft	deg	deg	ft	ft	ft	ft	deg	ft	°/100ft
6027.00	2.16	123.64	5963.56	-244.73	244.73	-716.34	288.86	756.99	0.45
6217.00	2.37	129.81	6153.41	-240.23	240.23	-710.34	288.68	749.86	0.17
6312.00	5.91	172.46	6248.17	-234.12	234.12	-708.19	288.29	745.89	4.70
6407.00	12.54	180.97	6341.89	-218.94	218.94	-707.72	287.19	740.82	7.11
6502.00	20.14	182.76	6432.98	-192.25	192.25	-708.69	285.18	734.30	8.01
6597.00	27.14	181.97	6519.96	-154.21	154.21	-710.22	282.25	726.77	7.38
6692.00	33.17	180.95	6602.07	-106.53	106.53	-711.40	278.52	719.33	6.37
6787.00	42.56	181.36	6676.98	-48.30	48.30	-712.59	273.88	714.23	9.89
6883.00	49.90	180.23	6743.35	20.97	-20.97	-713.51	268.32	713.82	7.68
6978.00	55.37	179.95	6800.98	96.45	-96.45	-713.63	262.30	720.11	5.77
7073.00	63.98	180.07	6848.90	178.37	-178.37	-713.64	255.97	735.60	9.07
7168.00	69.27	182.42	6886.58	265.52	-265.52	-715.58	249.64	763.25	6.01
7264.00	76.76	181.96	6914.60	357.20	-357.20	-719.08	243.58	802.91	7.82
7359.00	85.96	182.17	6928.86	450.96	-450.96	-722.46	238.03	851.65	9.69
7539.00	87.42	177.63	6939.25	630.60	-630.60	-722.13	228.87	958.71	2.65
7632.00	88.26	179.24	6942.76	723.50	-723.50	-719.58	224.84	1020.42	1.95
7725.00	88.86	180.92	6945.11	816.47	-816.47	-719.71	221.40	1088.39	1.92
7818.00	90.64	179.32	6945.52	909.46	-909.46	-719.90	218.36	1159.90	2.58

MD	Inc	Azim	TVD	VS	+N/-S	+E/-W	Closure Direction	Closure Distance	DLS
ft	deg	deg	ft	ft	ft	ft	deg	ft	°/100ft
7913.00	92.75	180.24	6942.71	1004.41	-1004.41	-719.54	215.62	1235.54	2.43
8008.00	89.90	179.38	6940.51	1099.37	-1099.37	-719.23	213.19	1313.74	3.13
8103.00	89.90	178.54	6940.68	1194.36	-1194.36	-717.51	211.00	1393.31	0.89
8198.00	90.87	179.28	6940.04	1289.33	-1289.33	-715.70	209.03	1474.66	1.29
8293.00	90.77	178.79	6938.68	1384.31	-1384.31	-714.10	207.29	1557.64	0.53
8388.00	92.01	182.09	6936.37	1479.26	-1479.26	-714.83	205.79	1642.93	3.72
8483.00	91.04	180.24	6933.85	1574.21	-1574.21	-716.76	204.48	1729.70	2.21
8578.00	90.17	180.58	6932.85	1669.20	-1669.20	-717.44	203.26	1816.85	0.98
8673.00	89.63	179.13	6933.01	1764.19	-1764.19	-717.19	202.12	1904.40	1.62
8769.00	88.56	178.53	6934.53	1860.16	-1860.16	-715.23	201.03	1992.93	1.29
8864.00	88.29	180.15	6937.15	1955.11	-1955.11	-714.14	200.07	2081.46	1.73
8959.00	89.46	181.04	6939.01	2050.09	-2050.09	-715.12	199.23	2171.24	1.55
9054.00	88.96	181.23	6940.31	2145.06	-2145.06	-717.00	198.48	2261.72	0.57
9150.00	91.37	180.63	6940.03	2241.04	-2241.04	-718.56	197.78	2353.42	2.59
9245.00	90.23	181.12	6938.70	2336.02	-2336.02	-720.01	197.13	2444.46	1.31
9340.00	90.44	180.86	6938.14	2431.00	-2431.00	-721.66	196.53	2535.86	0.35
9436.00	90.50	180.90	6937.35	2526.99	-2526.99	-723.14	195.97	2628.42	0.08
9531.00	89.46	180.38	6937.38	2621.98	-2621.98	-724.20	195.44	2720.16	1.22

MD	Inc	Azim	TVD	VS	+N/-S	+E/-W	Closure Direction	Closure Distance	DLS
ft	deg	deg	ft	ft	ft	ft	deg	ft	°/100ft
9626.00	89.36	179.95	6938.35	2716.97	-2716.97	-724.48	194.93	2811.91	0.47
9721.00	89.06	180.09	6939.66	2811.97	-2811.97	-724.51	194.45	2903.80	0.35
9817.00	88.09	180.36	6942.04	2907.93	-2907.93	-724.89	194.00	2996.92	1.05
9911.00	89.03	178.32	6944.41	3001.89	-3001.89	-723.80	193.56	3087.92	2.39
10007.00	87.89	178.84	6946.99	3097.83	-3097.83	-721.42	193.11	3180.72	1.31
10102.00	87.52	178.57	6950.80	3192.72	-3192.72	-719.28	192.70	3272.74	0.48
10197.00	88.29	178.82	6954.28	3287.64	-3287.64	-717.12	192.30	3364.94	0.85
10292.00	88.35	178.86	6957.06	3382.58	-3382.58	-715.20	191.94	3457.36	0.08
10388.00	88.22	179.67	6959.93	3478.52	-3478.52	-713.97	191.60	3551.04	0.85
10483.00	89.40	181.22	6961.90	3573.50	-3573.50	-714.71	191.31	3644.27	2.04
10578.00	87.39	182.38	6964.57	3668.41	-3668.41	-717.70	191.07	3737.95	2.45
10674.00	86.78	182.01	6969.45	3764.21	-3764.21	-721.37	190.85	3832.71	0.74
10769.00	85.93	182.27	6975.49	3858.95	-3858.95	-724.91	190.64	3926.45	0.93
10864.00	83.90	182.94	6983.91	3953.47	-3953.47	-729.21	190.45	4020.16	2.25
10960.00	85.02	183.39	6993.17	4048.88	-4048.88	-734.50	190.28	4114.96	1.25
11055.00	88.05	182.64	6998.91	4143.56	-4143.56	-739.48	190.12	4209.03	3.29
11150.00	88.45	181.68	7001.81	4238.45	-4238.45	-743.06	189.94	4303.09	1.10
11246.00	87.11	181.14	7005.53	4334.34	-4334.34	-745.42	189.76	4397.98	1.51

MD	Inc	Azim	TVD	VS	+N/-S	+E/-W	Closure Direction	Closure Distance	DLS
ft	deg	deg	ft	ft	ft	ft	deg	ft	°/100ft
11346.00	86.50	180.51	7011.10	4434.18	-4434.18	-746.85	189.56	4496.63	0.88

MD	Inc	Azim	TVD	VS	+N/-S	+E/-W	Closure Direction	Closure Distance	DLS
ft	deg	deg	ft	ft	ft	ft	deg	ft	°/100ft

5" = 100' FEET TVD