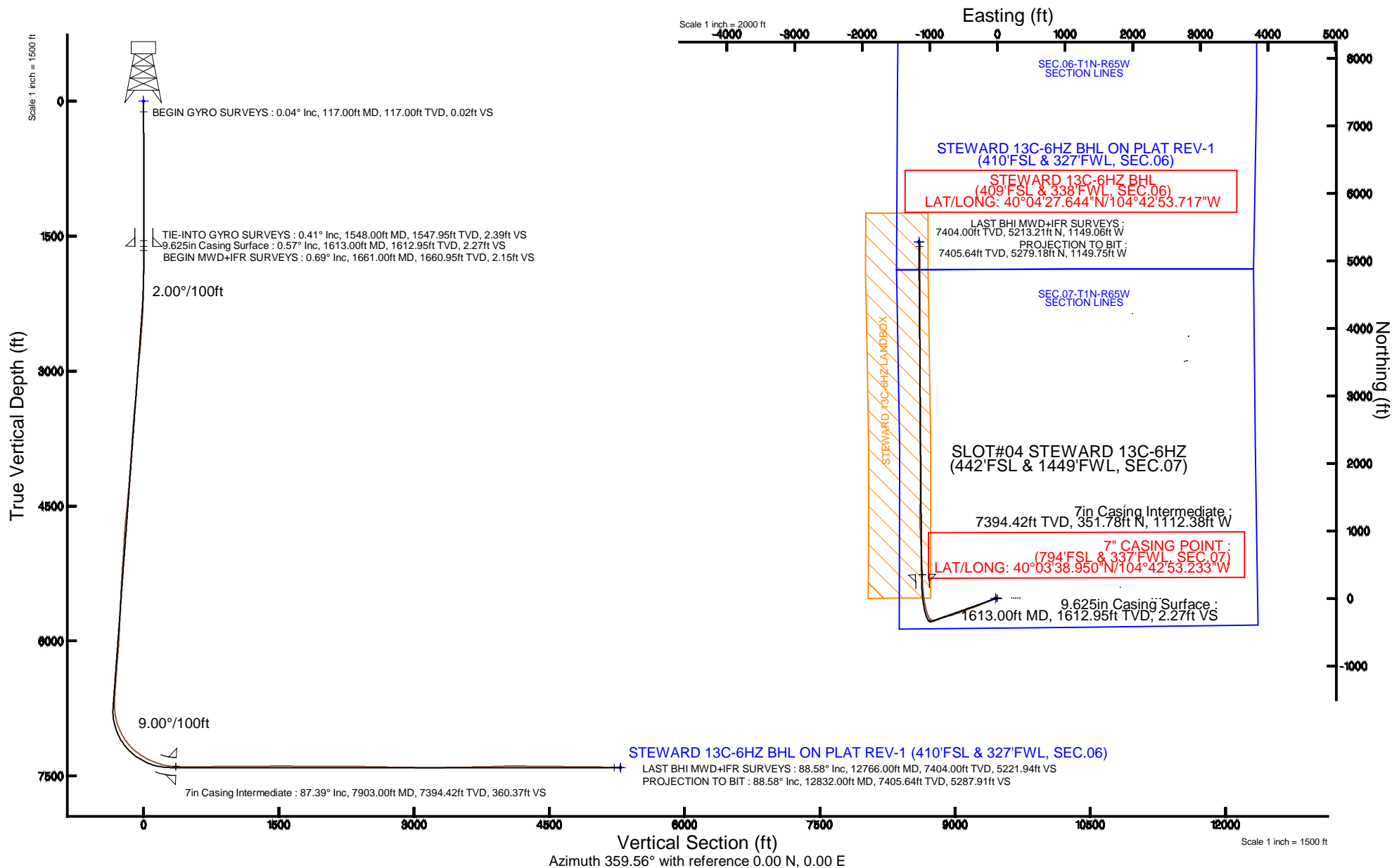


Location: COLORADO Slot: SLOT#04 STEWARD 13C-6HZ (442'FSL & 1449'FWL, SEC.07)
Field: WELD COUNTY (KERR MCGEE)Well: STEWARD 13C-6HZ
Facility: SEC.07-T1N-R65W Wellbore: STEWARD 13C-6HZ PWB

Plot reference wellpath is STEWARD 13C-6HZ (REV-A 1) PWP	
True vertical depths are referenced to XTREME 8 (17KB) (RKB)	Grid System: NAD83 / Lambert Colorado SP, Northern Zone (501), US feet
Measured depths are referenced to XTREME 8 (17KB) (RKB)	North Reference: True north
XTREME 8 (17KB) (RKB) to Mean Sea Level: 5021 feet	Scale: True distance
Mean Sea Level to Mud line (At Slot: SLOT#04 STEWARD 13C-6HZ (442FSL & 1449FWL, SEC.07)): 0 feet	Depths are in feet
Coordinates are in feet referenced to Slot	
Created by: amarcar on 1/5/2015	



REFERENCE WELLPATH IDENTIFICATION			
Operator	KERR-MCGEE OIL & GAS ONSHORE LP	Slot	SLOT#04 STEWARD 13C-6HZ (442'FSL & 1449'FWL, SEC.07)
Area	COLORADO	Well	STEWARD 13C-6HZ
Field	WELD COUNTY (KERR MCGEE)	Wellbore	STEWARD 13C-6HZ AWB (117'-12832'MD)
Facility	SEC.07-T1N-R65W		

REPORT SETUP INFORMATION			
Projection System	NAD83 / Lambert Colorado SP, Northern Zone (501), US feet	Software System	WellArchitect® 4.0.0
North Reference	True	User	Amarcar
Scale	0.999962	Report Generated	12/30/2014 at 3:51:13 PM
Convergence at slot	n/a	Database/Source file	WellArchitectDB/STEWARD_13C-6HZ_AWB_117_-12832_MD_.xml

WELLPATH LOCATION						
	Local coordinates		Grid coordinates		Geographic coordinates	
	North[ft]	East[ft]	Easting[US ft]	Northing[US ft]	Latitude	Longitude
Slot Location	-76.27	-3366.02	3220896.60	1265633.08	40°03'35.474"N	104°42'38.927"W
Facility Reference Pt			3224261.66	1265739.76	40°03'36.230"N	104°41'55.637"W
Field Reference Pt			3197771.84	1268891.29	40°04'09.600"N	104°47'36.000"W

WELLPATH DATUM			
Calculation method	Minimum curvature	XTREME 8 (17'KB) (RKB) to Facility Vertical Datum	5021.00ft
Horizontal Reference Pt	Slot	XTREME 8 (17'KB) (RKB) to Mean Sea Level	5021.00ft
Vertical Reference Pt	XTREME 8 (17'KB) (RKB)	XTREME 8 (17'KB) (RKB) to Mud Line at Slot (SLOT#04 STEWARD 13C-6HZ (442'FSL & 1449'FWL, SEC.07))	5021.00ft
MD Reference Pt	XTREME 8 (17'KB) (RKB)	Section Origin	N 0.00, E 0.00 ft
Field Vertical Reference	Mean Sea Level	Section Azimuth	359.56°

REFERENCE WELLPATH IDENTIFICATION

Operator	KERR-MCGEE OIL & GAS ONSHORE LP	Slot	SLOT#04 STEWARD 13C-6HZ (442'FSL & 1449'FWL, SEC.07)
Area	COLORADO	Well	STEWARD 13C-6HZ
Field	WELD COUNTY (KERR MCGEE)	Wellbore	STEWARD 13C-6HZ AWB (117'-12832'MD)
Facility	SEC.07-T1N-R65W		

WELLPATH DATA (148 stations) † = interpolated/extrapolated station

MD [ft]	Inclination [°]	Azimuth [°]	TVD [ft]	Vert Sect [ft]	North [ft]	East [ft]	Latitude	Longitude	DLS [°/100ft]	Comments
0.00†	0.000	46.240	0.00	0.00	0.00	0.00	40°03'35.474"N	104°42'38.927"W	0.00	
17.00	0.000	46.240	17.00	0.00	0.00	0.00	40°03'35.474"N	104°42'38.927"W	0.00	
117.00	0.040	46.240	117.00	0.02	0.02	0.03	40°03'35.474"N	104°42'38.927"W	0.04	BEGIN GYRO SURVEYS
217.00	0.390	333.580	217.00	0.35	0.35	-0.10	40°03'35.477"N	104°42'38.928"W	0.38	
317.00	0.310	311.600	317.00	0.84	0.84	-0.45	40°03'35.482"N	104°42'38.933"W	0.15	
417.00	0.250	21.380	417.00	1.22	1.22	-0.58	40°03'35.486"N	104°42'38.934"W	0.32	
517.00	0.450	349.260	516.99	1.81	1.81	-0.57	40°03'35.492"N	104°42'38.934"W	0.27	
617.00	0.310	298.410	616.99	2.33	2.32	-0.88	40°03'35.497"N	104°42'38.938"W	0.35	
717.00	0.340	11.200	716.99	2.75	2.74	-1.06	40°03'35.501"N	104°42'38.941"W	0.39	
817.00	0.530	331.900	816.99	3.45	3.44	-1.22	40°03'35.508"N	104°42'38.943"W	0.34	
917.00	0.180	325.270	916.99	3.99	3.98	-1.53	40°03'35.513"N	104°42'38.947"W	0.35	
1017.00	0.310	293.130	1016.99	4.23	4.21	-1.87	40°03'35.516"N	104°42'38.951"W	0.18	
1117.00	0.650	250.890	1116.98	4.16	4.14	-2.65	40°03'35.515"N	104°42'38.961"W	0.47	
1217.00	0.700	223.090	1216.98	3.53	3.50	-3.61	40°03'35.509"N	104°42'38.973"W	0.33	
1317.00	0.590	266.770	1316.97	3.06	3.03	-4.54	40°03'35.504"N	104°42'38.985"W	0.49	
1417.00	0.810	253.080	1416.96	2.84	2.79	-5.73	40°03'35.502"N	104°42'39.001"W	0.27	
1517.00	0.490	245.160	1516.96	2.46	2.41	-6.79	40°03'35.498"N	104°42'39.014"W	0.33	
1548.00	0.410	259.370	1547.95	2.39	2.33	-7.02	40°03'35.497"N	104°42'39.017"W	0.44	TIE-INTO GYRO SURVEYS
1661.00	0.690	255.800	1660.95	2.15	2.09	-8.08	40°03'35.495"N	104°42'39.031"W	0.25	BEGIN MWD+IFR SURVEYS
1753.00	0.730	257.340	1752.94	1.90	1.83	-9.19	40°03'35.492"N	104°42'39.045"W	0.05	
1845.00	1.890	252.830	1844.92	1.34	1.25	-11.21	40°03'35.486"N	104°42'39.071"W	1.26	
1937.00	1.730	251.800	1936.87	0.48	0.37	-13.98	40°03'35.478"N	104°42'39.107"W	0.18	
2029.00	3.140	256.320	2028.79	-0.52	-0.66	-17.75	40°03'35.467"N	104°42'39.155"W	1.55	
2121.00	5.110	258.130	2120.54	-1.91	-2.10	-24.20	40°03'35.453"N	104°42'39.238"W	2.15	
2213.00	6.980	257.240	2212.03	-3.92	-4.18	-33.67	40°03'35.433"N	104°42'39.360"W	2.04	
2305.00	8.540	253.850	2303.18	-6.96	-7.31	-45.68	40°03'35.402"N	104°42'39.514"W	1.77	
2396.00	9.880	249.280	2393.01	-11.49	-11.95	-59.47	40°03'35.356"N	104°42'39.692"W	1.68	
2488.00	11.600	249.000	2483.39	-17.48	-18.06	-75.49	40°03'35.296"N	104°42'39.898"W	1.87	
2580.00	13.270	251.550	2573.23	-23.99	-24.72	-94.14	40°03'35.230"N	104°42'40.138"W	1.91	
2672.00	12.540	250.740	2662.91	-30.48	-31.36	-113.59	40°03'35.164"N	104°42'40.388"W	0.82	
2764.00	13.840	247.740	2752.48	-37.79	-38.82	-133.20	40°03'35.090"N	104°42'40.640"W	1.60	
2855.00	13.590	242.650	2840.89	-46.67	-47.85	-152.77	40°03'35.001"N	104°42'40.892"W	1.35	
2947.00	12.540	240.890	2930.51	-56.35	-57.68	-171.10	40°03'34.904"N	104°42'41.127"W	1.22	
3038.00	11.660	249.650	3019.49	-64.22	-65.68	-188.35	40°03'34.825"N	104°42'41.349"W	2.23	
3130.00	13.020	251.370	3109.36	-70.63	-72.23	-206.89	40°03'34.760"N	104°42'41.588"W	1.53	
3221.00	11.590	248.220	3198.27	-77.15	-78.89	-225.10	40°03'34.694"N	104°42'41.822"W	1.74	
3312.00	12.250	242.090	3287.31	-84.93	-86.81	-242.12	40°03'34.616"N	104°42'42.041"W	1.57	
3399.00	12.760	242.640	3372.25	-93.54	-95.54	-258.81	40°03'34.530"N	104°42'42.255"W	0.60	
3484.00	13.240	247.010	3455.07	-101.52	-103.66	-276.10	40°03'34.450"N	104°42'42.478"W	1.29	
3571.00	13.580	249.630	3539.70	-108.82	-111.10	-294.85	40°03'34.376"N	104°42'42.719"W	0.80	
3657.00	11.740	246.430	3623.61	-115.70	-118.12	-312.34	40°03'34.307"N	104°42'42.944"W	2.29	
3744.00	12.050	248.770	3708.74	-122.40	-124.94	-328.92	40°03'34.239"N	104°42'43.157"W	0.66	
3829.00	11.800	252.950	3791.91	-128.03	-130.71	-345.49	40°03'34.182"N	104°42'43.370"W	1.06	
3916.00	12.630	252.750	3876.94	-133.32	-136.13	-363.08	40°03'34.129"N	104°42'43.597"W	0.96	
4004.00	12.910	254.970	3962.76	-138.58	-141.54	-381.77	40°03'34.075"N	104°42'43.837"W	0.64	

REFERENCE WELLPATH IDENTIFICATION

Operator	KERR-MCGEE OIL & GAS ONSHORE LP	Slot	SLOT#04 STEWARD 13C-6HZ (442'FSL & 1449'FWL, SEC.07)
Area	COLORADO	Well	STEWARD 13C-6HZ
Field	WELD COUNTY (KERR MCGEE)	Wellbore	STEWARD 13C-6HZ AWP (117'-12832'MD)
Facility	SEC.07-T1N-R65W		

WELLPATH DATA (148 stations)

MD [ft]	Inclination [°]	Azimuth [°]	TVD [ft]	Vert Sect [ft]	North [ft]	East [ft]	Latitude	Longitude	DLS [°/100ft]	Comments
4089.00	12.330	249.010	4045.71	-144.16	-147.25	-399.41	40°03'34.019"N	104°42'44.064"W	1.68	
4175.00	13.300	249.230	4129.57	-150.82	-154.05	-417.23	40°03'33.952"N	104°42'44.293"W	1.13	
4260.00	13.970	252.420	4212.17	-157.24	-160.61	-436.16	40°03'33.887"N	104°42'44.536"W	1.18	
4345.00	14.590	250.760	4294.55	-163.71	-167.24	-456.05	40°03'33.821"N	104°42'44.792"W	0.87	
4430.00	13.590	249.280	4376.99	-170.62	-174.30	-475.49	40°03'33.751"N	104°42'45.042"W	1.25	
4515.00	12.290	245.070	4459.83	-177.83	-181.65	-493.04	40°03'33.679"N	104°42'45.268"W	1.89	
4603.00	12.260	240.660	4545.82	-186.23	-190.18	-509.68	40°03'33.595"N	104°42'45.482"W	1.07	
4688.00	13.970	246.310	4628.60	-194.64	-198.72	-526.94	40°03'33.510"N	104°42'45.704"W	2.51	
4773.00	14.540	247.210	4710.99	-202.75	-206.98	-546.17	40°03'33.429"N	104°42'45.951"W	0.72	
4856.00	13.130	251.280	4791.58	-209.67	-214.04	-564.71	40°03'33.359"N	104°42'46.190"W	2.06	
4941.00	13.090	256.170	4874.36	-214.92	-219.44	-583.20	40°03'33.305"N	104°42'46.427"W	1.31	
5026.00	12.150	257.900	4957.31	-218.96	-223.61	-601.29	40°03'33.264"N	104°42'46.660"W	1.19	
5112.00	11.720	252.190	5041.45	-223.39	-228.18	-618.46	40°03'33.219"N	104°42'46.881"W	1.46	
5197.00	11.520	245.720	5124.72	-229.40	-234.31	-634.42	40°03'33.158"N	104°42'47.086"W	1.55	
5282.00	10.850	248.160	5208.10	-235.75	-240.78	-649.58	40°03'33.094"N	104°42'47.281"W	0.96	
5367.00	11.070	252.750	5291.55	-241.03	-246.18	-664.80	40°03'33.041"N	104°42'47.477"W	1.06	
5453.00	12.340	255.030	5375.76	-245.72	-251.00	-681.56	40°03'32.993"N	104°42'47.692"W	1.57	
5538.00	12.370	256.700	5458.79	-250.03	-255.44	-699.20	40°03'32.950"N	104°42'47.919"W	0.42	
5623.00	12.430	260.770	5541.81	-253.45	-259.00	-717.09	40°03'32.914"N	104°42'48.149"W	1.03	
5708.00	13.310	259.820	5624.68	-256.50	-262.20	-735.75	40°03'32.883"N	104°42'48.389"W	1.06	
5793.00	11.010	257.440	5707.76	-259.86	-265.69	-753.30	40°03'32.848"N	104°42'48.615"W	2.77	
5878.00	11.160	252.260	5791.18	-264.01	-269.96	-769.06	40°03'32.806"N	104°42'48.818"W	1.18	
5963.00	11.350	258.610	5874.55	-268.04	-274.12	-785.10	40°03'32.765"N	104°42'49.024"W	1.47	
6051.00	11.530	255.060	5960.80	-271.89	-278.10	-802.08	40°03'32.726"N	104°42'49.242"W	0.83	
6140.00	11.610	249.280	6048.00	-277.22	-283.56	-819.05	40°03'32.672"N	104°42'49.461"W	1.31	
6225.00	12.680	248.410	6131.09	-283.55	-290.02	-835.73	40°03'32.608"N	104°42'49.675"W	1.28	
6310.00	12.890	248.450	6213.99	-290.33	-296.94	-853.22	40°03'32.539"N	104°42'49.900"W	0.25	
6397.00	12.350	249.240	6298.88	-297.06	-303.80	-870.95	40°03'32.472"N	104°42'50.128"W	0.65	
6485.00	12.500	252.360	6384.82	-303.14	-310.02	-888.82	40°03'32.410"N	104°42'50.358"W	0.78	
6572.00	12.830	248.990	6469.71	-309.32	-316.34	-906.81	40°03'32.348"N	104°42'50.589"W	0.93	
6659.00	12.100	249.400	6554.66	-315.85	-323.01	-924.36	40°03'32.282"N	104°42'50.815"W	0.85	
6744.00	11.800	257.020	6637.82	-320.81	-328.09	-941.17	40°03'32.232"N	104°42'51.031"W	1.89	
6830.00	11.230	272.060	6722.11	-322.35	-329.77	-958.12	40°03'32.215"N	104°42'51.249"W	3.54	
6873.00	13.260	292.300	6764.15	-320.26	-327.75	-966.87	40°03'32.235"N	104°42'51.362"W	10.97	
6917.00	15.410	300.550	6806.78	-315.30	-322.86	-976.57	40°03'32.283"N	104°42'51.486"W	6.73	
6960.00	17.430	306.490	6848.03	-308.49	-316.12	-986.67	40°03'32.350"N	104°42'51.616"W	6.10	
7002.00	19.600	316.800	6887.86	-299.53	-307.24	-996.56	40°03'32.438"N	104°42'51.743"W	9.33	
7045.00	21.930	326.220	6928.08	-287.52	-295.31	-1005.96	40°03'32.555"N	104°42'51.864"W	9.45	
7088.00	24.640	331.500	6967.57	-272.90	-280.75	-1014.71	40°03'32.699"N	104°42'51.977"W	7.95	
7130.00	27.270	334.880	7005.34	-256.43	-264.34	-1022.97	40°03'32.862"N	104°42'52.083"W	7.18	
7173.00	29.870	338.410	7043.10	-237.48	-245.46	-1031.09	40°03'33.048"N	104°42'52.188"W	7.21	
7216.00	33.360	342.070	7079.72	-216.21	-224.25	-1038.68	40°03'33.258"N	104°42'52.285"W	9.26	
7258.00	36.420	344.190	7114.16	-193.17	-201.26	-1045.63	40°03'33.485"N	104°42'52.375"W	7.84	
7301.00	40.480	345.330	7147.83	-167.32	-175.46	-1052.65	40°03'33.740"N	104°42'52.465"W	9.58	
7343.00	44.410	346.000	7178.82	-139.81	-148.01	-1059.66	40°03'34.011"N	104°42'52.555"W	9.42	

REFERENCE WELLPATH IDENTIFICATION

Operator	KERR-MCGEE OIL & GAS ONSHORE LP	Slot	SLOT#04 STEWARD 13C-6HZ (442'FSL & 1449'FWL, SEC.07)
Area	COLORADO	Well	STEWARD 13C-6HZ
Field	WELD COUNTY (KERR MCGEE)	Wellbore	STEWARD 13C-6HZ AWB (117'-12832'MD)
Facility	SEC.07-T1N-R65W		

WELLPATH DATA (148 stations) † = interpolated/extrapolated station

MD [ft]	Inclination [°]	Azimuth [°]	TVD [ft]	Vert Sect [ft]	North [ft]	East [ft]	Latitude	Longitude	DLS [°/100ft]	Comments
7386.00	49.450	347.690	7208.18	-109.17	-117.43	-1066.78	40°03'34.313"N	104°42'52.647"W	12.07	
7429.00	53.880	349.660	7234.84	-76.06	-84.36	-1073.39	40°03'34.640"N	104°42'52.732"W	10.91	
7473.00	56.690	350.830	7259.90	-40.37	-48.72	-1079.51	40°03'34.992"N	104°42'52.810"W	6.75	
7518.00	58.580	351.830	7283.99	-2.75	-11.15	-1085.23	40°03'35.364"N	104°42'52.884"W	4.60	
7562.00	62.040	352.860	7305.78	35.16	26.73	-1090.32	40°03'35.738"N	104°42'52.949"W	8.12	
7607.00	65.320	353.830	7325.73	75.25	66.79	-1094.99	40°03'36.134"N	104°42'53.010"W	7.54	
7650.00	68.230	354.060	7342.68	114.57	106.08	-1099.16	40°03'36.522"N	104°42'53.063"W	6.79	
7692.00	70.670	355.430	7357.42	153.76	145.24	-1102.75	40°03'36.909"N	104°42'53.109"W	6.56	
7736.00	74.140	356.220	7370.72	195.61	187.06	-1105.80	40°03'37.322"N	104°42'53.149"W	8.07	
7779.00	78.170	357.210	7381.01	237.30	228.73	-1108.19	40°03'37.734"N	104°42'53.179"W	9.63	
7823.00	82.600	358.410	7388.36	280.65	272.07	-1109.85	40°03'38.162"N	104°42'53.201"W	10.42	
7853.00	85.710	358.090	7391.41	310.48	301.90	-1110.76	40°03'38.457"N	104°42'53.212"W	10.42	
7903.00†	87.390	358.185	7394.42	360.37	351.78	-1112.38	40°03'38.950"N	104°42'53.233"W	3.37	7" CASING POINT
7964.00	89.440	358.300	7396.11	421.33	412.73	-1114.25	40°03'39.552"N	104°42'53.257"W	3.37	
8049.00	89.440	357.720	7396.94	506.29	497.67	-1117.20	40°03'40.392"N	104°42'53.295"W	0.68	
8134.00	89.470	357.510	7397.75	591.24	582.59	-1120.74	40°03'41.231"N	104°42'53.341"W	0.25	
8223.00	91.050	358.020	7397.34	680.19	671.52	-1124.21	40°03'42.110"N	104°42'53.386"W	1.87	
8313.00	91.320	356.920	7395.48	770.11	761.41	-1128.18	40°03'42.998"N	104°42'53.437"W	1.26	
8402.00	89.750	356.000	7394.65	858.97	850.23	-1133.68	40°03'43.876"N	104°42'53.508"W	2.04	
8489.00	89.530	356.930	7395.20	945.85	937.07	-1139.04	40°03'44.734"N	104°42'53.577"W	1.10	
8574.00	89.870	358.260	7395.64	1030.79	1021.99	-1142.61	40°03'45.573"N	104°42'53.623"W	1.62	
8661.00	90.490	359.780	7395.37	1117.79	1108.97	-1144.10	40°03'46.433"N	104°42'53.642"W	1.89	
8747.00	90.830	359.440	7394.38	1203.78	1194.96	-1144.68	40°03'47.283"N	104°42'53.649"W	0.56	
8832.00	90.950	0.610	7393.06	1288.76	1279.95	-1144.64	40°03'48.123"N	104°42'53.649"W	1.38	
8917.00	91.410	0.960	7391.31	1373.73	1364.93	-1143.48	40°03'48.962"N	104°42'53.634"W	0.68	
9002.00	90.490	0.990	7389.90	1458.69	1449.90	-1142.03	40°03'49.802"N	104°42'53.615"W	1.08	
9088.00	90.240	1.180	7389.35	1544.66	1535.88	-1140.40	40°03'50.652"N	104°42'53.595"W	0.37	
9173.00	88.520	0.280	7390.27	1629.63	1620.87	-1139.32	40°03'51.492"N	104°42'53.581"W	2.28	
9260.00	88.110	359.740	7392.83	1716.59	1707.83	-1139.31	40°03'52.351"N	104°42'53.580"W	0.78	
9345.00	90.400	0.190	7393.93	1801.57	1792.82	-1139.36	40°03'53.191"N	104°42'53.581"W	2.75	
9431.00	90.860	0.130	7392.99	1887.56	1878.81	-1139.12	40°03'54.041"N	104°42'53.578"W	0.54	
9518.00	90.030	0.250	7392.31	1974.55	1965.81	-1138.83	40°03'54.900"N	104°42'53.575"W	0.96	
9603.00	90.550	0.010	7391.88	2059.55	2050.81	-1138.64	40°03'55.740"N	104°42'53.572"W	0.67	
9689.00	89.160	359.480	7392.10	2145.54	2136.80	-1139.02	40°03'56.590"N	104°42'53.577"W	1.73	
9776.00	90.060	359.270	7392.69	2232.54	2223.79	-1139.97	40°03'57.450"N	104°42'53.589"W	1.06	
9863.00	88.910	358.420	7393.47	2319.53	2310.77	-1141.72	40°03'58.309"N	104°42'53.612"W	1.64	
9948.00	89.010	359.020	7395.02	2404.51	2395.74	-1143.62	40°03'59.149"N	104°42'53.636"W	0.72	
10035.00	89.440	359.820	7396.19	2491.50	2482.72	-1144.50	40°04'00.009"N	104°42'53.648"W	1.04	
10119.00	88.580	359.440	7397.65	2575.48	2566.71	-1145.04	40°04'00.838"N	104°42'53.655"W	1.12	
10290.00	88.640	359.640	7401.79	2746.43	2737.65	-1146.42	40°04'02.528"N	104°42'53.673"W	0.12	
10375.00	88.640	359.390	7403.81	2831.41	2822.62	-1147.13	40°04'03.368"N	104°42'53.682"W	0.29	
10458.00	89.470	359.880	7405.18	2914.40	2905.61	-1147.66	40°04'04.188"N	104°42'53.689"W	1.16	
10543.00	89.720	359.160	7405.78	2999.39	2990.60	-1148.38	40°04'05.028"N	104°42'53.698"W	0.90	
10628.00	89.350	0.160	7406.47	3084.39	3075.60	-1148.88	40°04'05.867"N	104°42'53.704"W	1.25	
10716.00	89.780	0.110	7407.14	3172.38	3163.60	-1148.67	40°04'06.737"N	104°42'53.702"W	0.49	

REFERENCE WELLPATH IDENTIFICATION

Operator	KERR-MCGEE OIL & GAS ONSHORE LP	Slot	SLOT#04 STEWARD 13C-6HZ (442'FSL & 1449'FWL, SEC.07)
Area	COLORADO	Well	STEWARD 13C-6HZ
Field	WELD COUNTY (KERR MCGEE)	Wellbore	STEWARD 13C-6HZ AWB (117'-12832'MD)
Facility	SEC.07-T1N-R65W		

WELLPATH DATA (148 stations)

MD [ft]	Inclination [°]	Azimuth [°]	TVD [ft]	Vert Sect [ft]	North [ft]	East [ft]	Latitude	Longitude	DLS [°/100ft]	Comments
10805.00	90.890	0.070	7406.62	3261.38	3252.59	-1148.53	40°04'07.617"N	104°42'53.700"W	1.25	
10892.00	90.270	0.650	7405.74	3348.36	3339.59	-1147.99	40°04'08.476"N	104°42'53.693"W	0.98	
10977.00	91.290	0.330	7404.58	3433.34	3424.57	-1147.26	40°04'09.316"N	104°42'53.684"W	1.26	
11062.00	91.070	359.460	7402.83	3518.32	3509.55	-1147.42	40°04'10.156"N	104°42'53.686"W	1.06	
11150.00	90.920	359.520	7401.30	3606.31	3597.54	-1148.20	40°04'11.025"N	104°42'53.696"W	0.18	
11320.00	91.270	0.490	7398.05	3776.27	3767.50	-1148.18	40°04'12.705"N	104°42'53.696"W	0.61	
11491.00	92.370	1.340	7392.62	3947.13	3938.39	-1145.45	40°04'14.394"N	104°42'53.661"W	0.81	
11576.00	90.610	0.720	7390.41	4032.07	4023.35	-1143.93	40°04'15.233"N	104°42'53.641"W	2.20	
11831.00	88.950	359.270	7391.39	4287.04	4278.33	-1143.95	40°04'17.753"N	104°42'53.642"W	0.86	
12091.00	89.530	0.300	7394.84	4547.02	4538.30	-1144.92	40°04'20.322"N	104°42'53.654"W	0.45	
12435.00	89.380	359.440	7398.11	4890.99	4882.28	-1145.71	40°04'23.721"N	104°42'53.665"W	0.25	
12766.00	88.580	359.400	7404.00	5221.94	5213.21	-1149.06	40°04'26.992"N	104°42'53.708"W	0.24	LAST BHI MWD+IFR SURVEYS
12832.00	88.580	359.400	7405.64	5287.91	5279.18	-1149.75	40°04'27.644"N	104°42'53.717"W	0.00	PROJECTION TO BIT

HOLE & CASING SECTIONS -

Ref Wellbore: STEWARD 13C-6HZ AWB (117'-12832'MD) Ref Wellpath: STEWARD 13C-6HZ AWP (117'-12832'MD)

String/Diameter	Start MD [ft]	End MD [ft]	Interval [ft]	Start TVD [ft]	End TVD [ft]	Start N/S [ft]	Start E/W [ft]	End N/S [ft]	End E/W [ft]
13.5in Open Hole	17.00	1624.00	1607.00	17.00	1623.95	0.00	0.00	2.19	-7.67
9.625in Casing Surface	17.00	1613.00	1596.00	17.00	1612.95	0.00	0.00	2.22	-7.57
8.75in Open Hole	1624.00	7913.00	6289.00	1623.95	7394.85	2.19	-7.67	361.77	-1112.69
7in Casing Intermediate	17.00	7903.00	7886.00	17.00	7394.42	0.00	0.00	351.78	-1112.38
6.125in Open Hole	7913.00	12832.00	4919.00	7394.85	7405.64	361.77	-1112.69	5279.18	-1149.75

REFERENCE WELLPATH IDENTIFICATION			
Operator	KERR-MCGEE OIL & GAS ONSHORE LP	Slot	SLOT#04 STEWARD 13C-6HZ (442'FSL & 1449'FWL, SEC.07)
Area	COLORADO	Well	STEWARD 13C-6HZ
Field	WELD COUNTY (KERR MCGEE)	Wellbore	STEWARD 13C-6HZ AWB (117'-12832'MD)
Facility	SEC.07-T1N-R65W		

TARGETS									
Name	MD [ft]	TVD [ft]	North [ft]	East [ft]	Grid East [US ft]	Grid North [US ft]	Latitude	Longitude	Shape
SEC.06-T1N-R65W SECTION LINES		0.00	0.00	-29.94	3220866.66	1265632.81	40°03'35.474"N	104°42'39.312"W	polygon
SEC.07-T1N-R65W SECTION LINES		0.00	0.00	-29.94	3220866.66	1265632.81	40°03'35.474"N	104°42'39.312"W	polygon
STEWARD 13C-6HZ BHL ON PLAT REV-1 (410'FSL & 327'FWL, SEC.06)		7406.00	5280.42	-1160.56	3219689.13	1270902.76	40°04'27.656"N	104°42'53.856"W	point
STEWARD 13C-6HZ LANDBOX		7406.00	5280.42	-1160.56	3219689.13	1270902.76	40°04'27.656"N	104°42'53.856"W	polygon

WELLPATH COMPOSITION -				
Ref Wellbore: STEWARD 13C-6HZ AWB (117'-12832'MD)		Ref Wellpath: STEWARD 13C-6HZ AWP (117'-12832'MD)		
Start MD [ft]	End MD [ft]	Positional Uncertainty Model	Log Name/Comment	Wellbore
17.00	1548.00	Generic gyro - continuous (Standard)	MS ENERGY GYRO SURVEYS 13.5" <117-1548>	STEWARD 13C-6HZ AWB (117'-12832'MD)
1548.00	7853.00	NaviTrak (MAGCORR,IFR)	BHI MWD+IFR SURVEYS 8.75" <1661-7853>	STEWARD 13C-6HZ AWB (117'-12832'MD)
7853.00	12766.00	NaviTrak (MAGCORR,IFR)	BHI MWD+IFR SURVEYS 6.125" <7964-12766>	STEWARD 13C-6HZ AWB (117'-12832'MD)
12766.00	12832.00	Blind Drilling (std)	Projection to bit	STEWARD 13C-6HZ AWB (117'-12832'MD)

REFERENCE WELLPATH IDENTIFICATION			
Operator	KERR-MCGEE OIL & GAS ONSHORE LP	Slot	SLOT#04 STEWARD 13C-6HZ (442'FSL & 1449'FWL, SEC.07)
Area	COLORADO	Well	STEWARD 13C-6HZ
Field	WELD COUNTY (KERR MCGEE)	Wellbore	STEWARD 13C-6HZ AWB (117'-12832'MD)
Facility	SEC.07-T1N-R65W		

WELLPATH COMMENTS				
MD [ft]	Inclination [°]	Azimuth [°]	TVD [ft]	Comment
117.00	0.040	46.240	117.00	BEGIN GYRO SURVEYS
1548.00	0.410	259.370	1547.95	TIE-INTO GYRO SURVEYS
1661.00	0.690	255.800	1660.95	BEGIN MWD+IFR SURVEYS
7903.00	87.390	358.185	7394.42	7" CASING POINT
12766.00	88.580	359.400	7404.00	LAST BHI MWD+IFR SURVEYS
12832.00	88.580	359.400	7405.64	PROJECTION TO BIT