

# Verdad Oil & Gas Corporation

Well Name: **Cervi 03N-63W-26-1N**

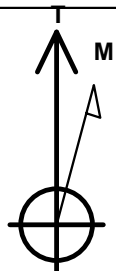
Surface Location: Cervi 03N-63W-26-1N Sec.26-T3N-R63W  
North American Datum 1983 , US State Plane 1983 , Colorado Northern Zone  
Ground Elevation: 4712.0

+N/-S	+E/-W	Northing	Easting	Latitude	Longitude	Slot
0.0	0.0	1313793.55	3307290.66	40.189528	-104.400050	

Xtreme 6 RKB - 16.2' WELL @ 4728.2ft (Xtreme 6 RKB - 16.2')

## WELLBORE TARGET DETAILS

Name	TVD	+N/-S	+E/-W	Shape
460' Setback BHL	1.0	4691.5	-800.0	Polygon
460' Setback SHL	1.0	300.0	-800.0	Polygon
Sectionline	1.0	-160.0	-800.0	Polygon
SHL 160'FSL & 1317'FEL	1.0	0.0	0.0	Point
BHL 460'FNL & 1320'FEL	6458.2	4692.2	-12.8	Point

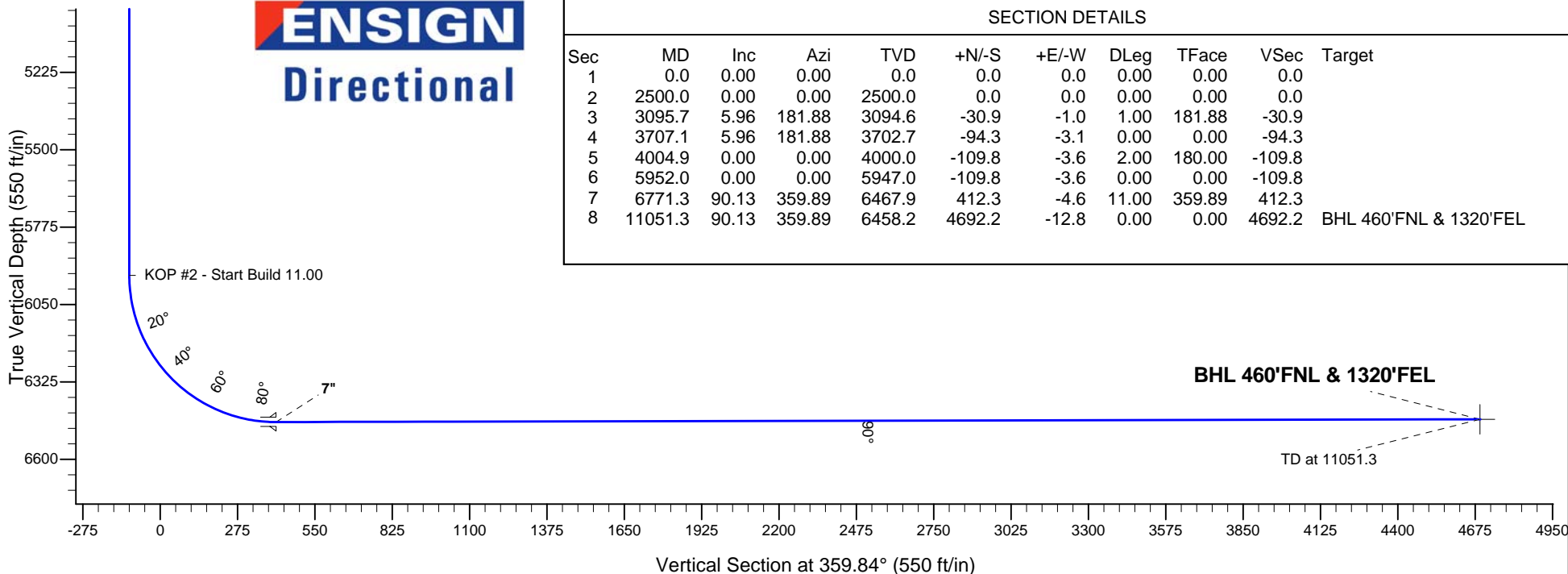
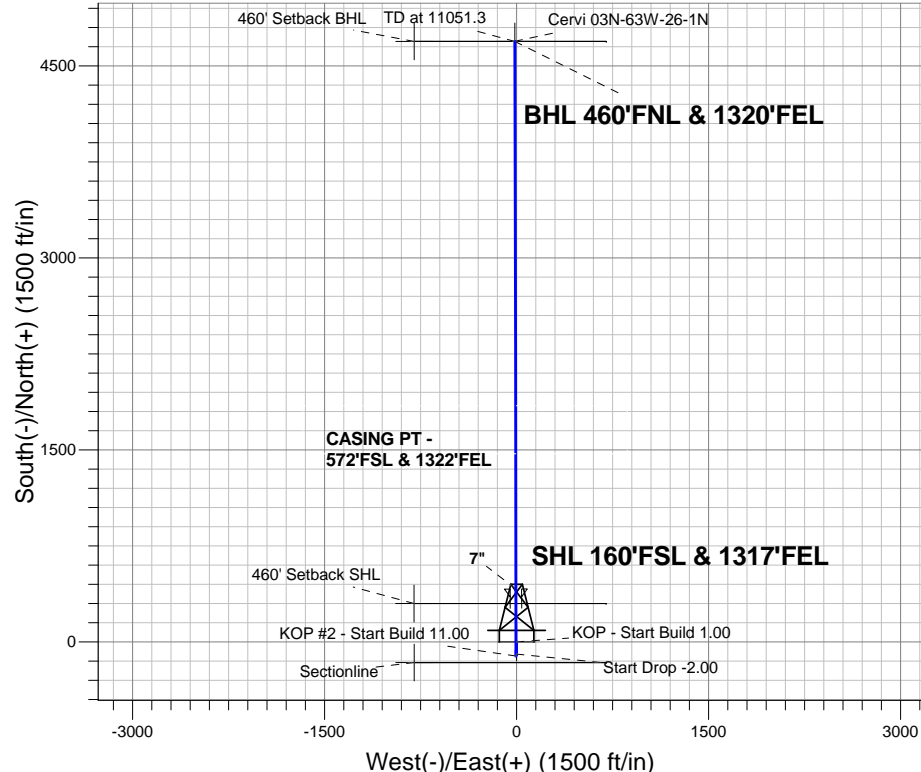


Azimuths to True North  
Magnetic North: 8.13°  
Magnetic Field  
Strength: 52657.5snT  
Dip Angle: 66.81°  
Date: 4/9/2015  
Model: IGRF2010

Cervi 03N-63W-26-1N Sec.26-T3N-R63W  
Cervi 03N-63W-26-1N  
Plan #4 (4-9-15)

## ANNOTATIONS

TVD	MD	Annotation
2500.0	2500.0	KOP - Start Build 1.00
3702.7	3707.1	Start Drop -2.00
5947.1	5952.0	KOP #2 - Start Build 11.00
6458.2	11051.3	TD at 11051.3



**ENSIGN**  
Directional

## SECTION DETAILS

Sec	MD	Inc	Azi	TVD	+N/-S	+E/-W	DLeg	TFace	VSec	Target
1	0.0	0.00	0.00	0.0	0.0	0.0	0.00	0.00	0.0	
2	2500.0	0.00	0.00	2500.0	0.0	0.0	0.00	0.00	0.0	
3	3095.7	5.96	181.88	3094.6	-30.9	-1.0	1.00	181.88	-30.9	
4	3707.1	5.96	181.88	3702.7	-94.3	-3.1	0.00	0.00	-94.3	
5	4004.9	0.00	0.00	4000.0	-109.8	-3.6	2.00	180.00	-109.8	
6	5952.0	0.00	0.00	5947.0	-109.8	-3.6	0.00	0.00	-109.8	
7	6771.3	90.13	359.89	6467.9	412.3	-4.6	11.00	359.89	412.3	
8	11051.3	90.13	359.89	6458.2	4692.2	-12.8	0.00	0.00	4692.2	BHL 460'FNL & 1320'FEL



# **Verdad Oil & Gas Corporation**

**SEC.26-T3N-R63W**

**Cervi 03N-63W-26-1N Sec.26-T3N-R63W**

**Cervi 03N-63W-26-1N**

**Wellbore #1**

**Plan: Plan #4 (4-9-15)**

## **Standard Planning Report**

**09 April, 2015**

<b>Database:</b>	landmark	<b>Local Co-ordinate Reference:</b>	Well Cervi 03N-63W-26-1N
<b>Company:</b>	Verdad Oil & Gas Corporation	<b>TVD Reference:</b>	WELL @ 4728.2ft (Xtreme 6 RKB - 16.2')
<b>Project:</b>	SEC.26-T3N-R63W	<b>MD Reference:</b>	WELL @ 4728.2ft (Xtreme 6 RKB - 16.2')
<b>Site:</b>	Cervi 03N-63W-26-1N Sec.26-T3N-R63W	<b>North Reference:</b>	True
<b>Well:</b>	Cervi 03N-63W-26-1N	<b>Survey Calculation Method:</b>	Minimum Curvature
<b>Wellbore:</b>	Wellbore #1		
<b>Design:</b>	Plan #4 (4-9-15)		

<b>Project</b>	SEC.26-T3N-R63W, Weld County, Colorado		
<b>Map System:</b>	US State Plane 1983	<b>System Datum:</b>	Mean Sea Level
<b>Geo Datum:</b>	North American Datum 1983		Using Well Reference Point
<b>Map Zone:</b>	Colorado Northern Zone		Using geodetic scale factor

Site Cervi 03N-63W-26-1N Sec.26-T3N-R63W					
Site Position:		Northing:		1,313,793.58 ft	
From:	Lat/Long	Easting:		Latitude:	40.189528
		3,307,290.66 ft		Longitude:	-104.400050
Position Uncertainty:		Slot Radius:		Grid Convergence:	
0.0 ft		"		0.71 °	

Well	Cervi 03N-63W-26-1N					
Well Position	+N-S	0.0 ft	Northing:	1,313,793.55 ft	Latitude:	40.189528
	+E-W	0.0 ft	Easting:	3,307,290.66 ft	Longitude:	-104.400050
Position Uncertainty		0.0 ft	Wellhead Elevation:	ft	Ground Level:	4,712.0 ft

<b>Wellbore</b>	Wellbore #1				
<b>Magnetics</b>	<b>Model Name</b>	<b>Sample Date</b>	<b>Declination (°)</b>	<b>Dip Angle (°)</b>	<b>Field Strength (nT)</b>
	IGRF2010	4/9/2015	8.14	66.81	52,657

<b>Design</b>	Plan #4 (4-9-15)			
<b>Audit Notes:</b>				
<b>Version:</b>	<b>Phase:</b>	PROTOTYPE	<b>Tie On Depth:</b>	0.0
<b>Vertical Section:</b>	<b>Depth From (TVD) (ft)</b>	<b>+N/-S (ft)</b>	<b>+E/-W (ft)</b>	<b>Direction (°)</b>
	0.0	0.0	0.0	359.84

<b>Plan Sections</b>										
Measured Depth (ft)	Inclination (°)	Azimuth (°)	Vertical Depth (ft)	+N/-S (ft)	+E/-W (ft)	Dogleg Rate (°/100ft)	Build Rate (°/100ft)	Turn Rate (°/100ft)	TFO (°)	Target
0.0	0.00	0.00	0.0	0.0	0.0	0.00	0.00	0.00	0.00	
2,500.0	0.00	0.00	2,500.0	0.0	0.0	0.00	0.00	0.00	0.00	
3,095.7	5.96	181.88	3,094.6	-30.9	-1.0	1.00	1.00	0.00	181.88	
3,707.1	5.96	181.88	3,702.7	-94.3	-3.1	0.00	0.00	0.00	0.00	
4,004.9	0.00	0.00	4,000.0	-109.8	-3.6	2.00	-2.00	0.00	180.00	
5,952.0	0.00	0.00	5,947.0	-109.8	-3.6	0.00	0.00	0.00	0.00	
6,771.3	90.13	359.89	6,467.9	412.3	-4.6	11.00	11.00	0.00	359.89	
11,051.3	90.13	359.89	6,458.2	4,692.2	-12.8	0.00	0.00	0.00	0.00	BHL 460'FNL & 132

<b>Database:</b>	landmark	<b>Local Co-ordinate Reference:</b>	Well Cervi 03N-63W-26-1N
<b>Company:</b>	Verdad Oil & Gas Corporation	<b>TVD Reference:</b>	WELL @ 4728.2ft (Xtreme 6 RKB - 16.2')
<b>Project:</b>	SEC.26-T3N-R63W	<b>MD Reference:</b>	WELL @ 4728.2ft (Xtreme 6 RKB - 16.2')
<b>Site:</b>	Cervi 03N-63W-26-1N Sec.26-T3N-R63W	<b>North Reference:</b>	True
<b>Well:</b>	Cervi 03N-63W-26-1N	<b>Survey Calculation Method:</b>	Minimum Curvature
<b>Wellbore:</b>	Wellbore #1		
<b>Design:</b>	Plan #4 (4-9-15)		

Planned Survey									
Measured Depth (ft)	Inclination (°)	Azimuth (°)	Vertical Depth (ft)	+N/-S (ft)	+E/-W (ft)	Vertical Section (ft)	Dogleg Rate (°/100ft)	Build Rate (°/100ft)	Turn Rate (°/100ft)
0.0	0.00	0.00	0.0	0.0	0.0	0.0	0.00	0.00	0.00
100.0	0.00	0.00	100.0	0.0	0.0	0.0	0.00	0.00	0.00
200.0	0.00	0.00	200.0	0.0	0.0	0.0	0.00	0.00	0.00
300.0	0.00	0.00	300.0	0.0	0.0	0.0	0.00	0.00	0.00
400.0	0.00	0.00	400.0	0.0	0.0	0.0	0.00	0.00	0.00
500.0	0.00	0.00	500.0	0.0	0.0	0.0	0.00	0.00	0.00
600.0	0.00	0.00	600.0	0.0	0.0	0.0	0.00	0.00	0.00
700.0	0.00	0.00	700.0	0.0	0.0	0.0	0.00	0.00	0.00
800.0	0.00	0.00	800.0	0.0	0.0	0.0	0.00	0.00	0.00
900.0	0.00	0.00	900.0	0.0	0.0	0.0	0.00	0.00	0.00
1,000.0	0.00	0.00	1,000.0	0.0	0.0	0.0	0.00	0.00	0.00
1,100.0	0.00	0.00	1,100.0	0.0	0.0	0.0	0.00	0.00	0.00
1,200.0	0.00	0.00	1,200.0	0.0	0.0	0.0	0.00	0.00	0.00
1,300.0	0.00	0.00	1,300.0	0.0	0.0	0.0	0.00	0.00	0.00
1,400.0	0.00	0.00	1,400.0	0.0	0.0	0.0	0.00	0.00	0.00
1,500.0	0.00	0.00	1,500.0	0.0	0.0	0.0	0.00	0.00	0.00
1,600.0	0.00	0.00	1,600.0	0.0	0.0	0.0	0.00	0.00	0.00
1,700.0	0.00	0.00	1,700.0	0.0	0.0	0.0	0.00	0.00	0.00
1,800.0	0.00	0.00	1,800.0	0.0	0.0	0.0	0.00	0.00	0.00
1,900.0	0.00	0.00	1,900.0	0.0	0.0	0.0	0.00	0.00	0.00
2,000.0	0.00	0.00	2,000.0	0.0	0.0	0.0	0.00	0.00	0.00
2,100.0	0.00	0.00	2,100.0	0.0	0.0	0.0	0.00	0.00	0.00
2,200.0	0.00	0.00	2,200.0	0.0	0.0	0.0	0.00	0.00	0.00
2,300.0	0.00	0.00	2,300.0	0.0	0.0	0.0	0.00	0.00	0.00
2,400.0	0.00	0.00	2,400.0	0.0	0.0	0.0	0.00	0.00	0.00
2,500.0	0.00	0.00	2,500.0	0.0	0.0	0.0	0.00	0.00	0.00
<b>KOP - Start Build 1.00</b>									
2,600.0	1.00	181.88	2,600.0	-0.9	0.0	-0.9	1.00	1.00	0.00
2,700.0	2.00	181.88	2,700.0	-3.5	-0.1	-3.5	1.00	1.00	0.00
2,800.0	3.00	181.88	2,799.9	-7.8	-0.3	-7.8	1.00	1.00	0.00
2,900.0	4.00	181.88	2,899.7	-13.9	-0.5	-13.9	1.00	1.00	0.00
3,000.0	5.00	181.88	2,999.4	-21.8	-0.7	-21.8	1.00	1.00	0.00
3,095.7	5.96	181.88	3,094.6	-30.9	-1.0	-30.9	1.00	1.00	0.00
3,100.0	5.96	181.88	3,098.9	-31.4	-1.0	-31.4	0.00	0.00	0.00
3,200.0	5.96	181.88	3,198.4	-41.7	-1.4	-41.7	0.00	0.00	0.00
3,300.0	5.96	181.88	3,297.8	-52.1	-1.7	-52.1	0.00	0.00	0.00
3,400.0	5.96	181.88	3,397.3	-62.5	-2.0	-62.5	0.00	0.00	0.00
3,500.0	5.96	181.88	3,496.7	-72.9	-2.4	-72.9	0.00	0.00	0.00
3,600.0	5.96	181.88	3,596.2	-83.2	-2.7	-83.2	0.00	0.00	0.00
3,700.0	5.96	181.88	3,695.7	-93.6	-3.1	-93.6	0.00	0.00	0.00
3,707.1	5.96	181.88	3,702.7	-94.3	-3.1	-94.3	0.00	0.00	0.00
<b>Start Drop -2.00</b>									
3,800.0	4.10	181.88	3,795.3	-102.5	-3.4	-102.5	2.00	-2.00	0.00
3,900.0	2.10	181.88	3,895.1	-107.9	-3.5	-107.9	2.00	-2.00	0.00
4,000.0	0.10	181.88	3,995.1	-109.8	-3.6	-109.8	2.00	-2.00	0.00
4,004.9	0.00	0.00	4,000.0	-109.8	-3.6	-109.8	2.00	-2.00	0.00
4,100.0	0.00	0.00	4,095.1	-109.8	-3.6	-109.8	0.00	0.00	0.00
4,200.0	0.00	0.00	4,195.1	-109.8	-3.6	-109.8	0.00	0.00	0.00
4,300.0	0.00	0.00	4,295.1	-109.8	-3.6	-109.8	0.00	0.00	0.00
4,400.0	0.00	0.00	4,395.1	-109.8	-3.6	-109.8	0.00	0.00	0.00
4,500.0	0.00	0.00	4,495.1	-109.8	-3.6	-109.8	0.00	0.00	0.00
4,600.0	0.00	0.00	4,595.1	-109.8	-3.6	-109.8	0.00	0.00	0.00
4,700.0	0.00	0.00	4,695.1	-109.8	-3.6	-109.8	0.00	0.00	0.00
4,800.0	0.00	0.00	4,795.1	-109.8	-3.6	-109.8	0.00	0.00	0.00

<b>Database:</b>	landmark	<b>Local Co-ordinate Reference:</b>	Well Cervi 03N-63W-26-1N
<b>Company:</b>	Verdad Oil & Gas Corporation	<b>TVD Reference:</b>	WELL @ 4728.2ft (Xtreme 6 RKB - 16.2')
<b>Project:</b>	SEC.26-T3N-R63W	<b>MD Reference:</b>	WELL @ 4728.2ft (Xtreme 6 RKB - 16.2')
<b>Site:</b>	Cervi 03N-63W-26-1N Sec.26-T3N-R63W	<b>North Reference:</b>	True
<b>Well:</b>	Cervi 03N-63W-26-1N	<b>Survey Calculation Method:</b>	Minimum Curvature
<b>Wellbore:</b>	Wellbore #1		
<b>Design:</b>	Plan #4 (4-9-15)		

Planned Survey									
Measured Depth (ft)	Inclination (°)	Azimuth (°)	Vertical Depth (ft)	+N/-S (ft)	+E/-W (ft)	Vertical Section (ft)	Dogleg Rate (°/100ft)	Build Rate (°/100ft)	Turn Rate (°/100ft)
4,900.0	0.00	0.00	4,895.1	-109.8	-3.6	-109.8	0.00	0.00	0.00
5,000.0	0.00	0.00	4,995.1	-109.8	-3.6	-109.8	0.00	0.00	0.00
5,100.0	0.00	0.00	5,095.1	-109.8	-3.6	-109.8	0.00	0.00	0.00
5,200.0	0.00	0.00	5,195.1	-109.8	-3.6	-109.8	0.00	0.00	0.00
5,300.0	0.00	0.00	5,295.1	-109.8	-3.6	-109.8	0.00	0.00	0.00
5,400.0	0.00	0.00	5,395.1	-109.8	-3.6	-109.8	0.00	0.00	0.00
5,500.0	0.00	0.00	5,495.1	-109.8	-3.6	-109.8	0.00	0.00	0.00
5,600.0	0.00	0.00	5,595.1	-109.8	-3.6	-109.8	0.00	0.00	0.00
5,700.0	0.00	0.00	5,695.1	-109.8	-3.6	-109.8	0.00	0.00	0.00
5,800.0	0.00	0.00	5,795.1	-109.8	-3.6	-109.8	0.00	0.00	0.00
5,900.0	0.00	0.00	5,895.1	-109.8	-3.6	-109.8	0.00	0.00	0.00
5,952.0	0.00	0.00	5,947.1	-109.8	-3.6	-109.8	0.00	0.00	0.00
<b>KOP #2 - Start Build 11.00</b>									
6,000.0	5.29	359.89	5,995.0	-107.6	-3.6	-107.6	11.01	11.01	0.00
6,100.0	16.29	359.89	6,093.1	-88.9	-3.6	-88.9	11.00	11.00	0.00
6,200.0	27.29	359.89	6,185.8	-51.8	-3.7	-51.8	11.00	11.00	0.00
6,300.0	38.29	359.89	6,269.8	2.2	-3.8	2.2	11.00	11.00	0.00
6,400.0	49.29	359.89	6,341.8	71.3	-3.9	71.3	11.00	11.00	0.00
6,500.0	60.29	359.89	6,399.4	152.9	-4.1	152.9	11.00	11.00	0.00
6,600.0	71.29	359.89	6,440.4	243.9	-4.3	244.0	11.00	11.00	0.00
6,700.0	82.29	359.89	6,463.2	341.1	-4.5	341.2	11.00	11.00	0.00
6,771.3	90.13	359.89	6,467.9	412.2	-4.6	412.2	11.00	11.00	0.00
<b>7"</b>									
6,800.0	90.13	359.89	6,467.8	440.9	-4.7	440.9	0.01	0.01	0.00
6,900.0	90.13	359.89	6,467.6	540.9	-4.9	540.9	0.00	0.00	0.00
7,000.0	90.13	359.89	6,467.4	640.9	-5.0	640.9	0.00	0.00	0.00
7,100.0	90.13	359.89	6,467.2	740.9	-5.2	740.9	0.00	0.00	0.00
7,200.0	90.13	359.89	6,466.9	840.9	-5.4	840.9	0.00	0.00	0.00
7,300.0	90.13	359.89	6,466.7	940.9	-5.6	940.9	0.00	0.00	0.00
7,400.0	90.13	359.89	6,466.5	1,040.9	-5.8	1,040.9	0.00	0.00	0.00
7,500.0	90.13	359.89	6,466.3	1,140.9	-6.0	1,140.9	0.00	0.00	0.00
7,600.0	90.13	359.89	6,466.0	1,240.9	-6.2	1,240.9	0.00	0.00	0.00
7,700.0	90.13	359.89	6,465.8	1,340.9	-6.4	1,340.9	0.00	0.00	0.00
7,800.0	90.13	359.89	6,465.6	1,440.9	-6.6	1,440.9	0.00	0.00	0.00
7,900.0	90.13	359.89	6,465.4	1,540.9	-6.8	1,540.9	0.00	0.00	0.00
8,000.0	90.13	359.89	6,465.1	1,640.9	-7.0	1,640.9	0.00	0.00	0.00
8,100.0	90.13	359.89	6,464.9	1,740.9	-7.2	1,740.9	0.00	0.00	0.00
8,200.0	90.13	359.89	6,464.7	1,840.9	-7.4	1,840.9	0.00	0.00	0.00
8,300.0	90.13	359.89	6,464.4	1,940.9	-7.6	1,940.9	0.00	0.00	0.00
8,400.0	90.13	359.89	6,464.2	2,040.9	-7.7	2,040.9	0.00	0.00	0.00
8,500.0	90.13	359.89	6,464.0	2,140.9	-7.9	2,140.9	0.00	0.00	0.00
8,600.0	90.13	359.89	6,463.8	2,240.9	-8.1	2,240.9	0.00	0.00	0.00
8,700.0	90.13	359.89	6,463.5	2,340.9	-8.3	2,340.9	0.00	0.00	0.00
8,800.0	90.13	359.89	6,463.3	2,440.9	-8.5	2,440.9	0.00	0.00	0.00
8,900.0	90.13	359.89	6,463.1	2,540.9	-8.7	2,540.9	0.00	0.00	0.00
9,000.0	90.13	359.89	6,462.9	2,640.9	-8.9	2,640.9	0.00	0.00	0.00
9,100.0	90.13	359.89	6,462.6	2,740.9	-9.1	2,740.9	0.00	0.00	0.00
9,200.0	90.13	359.89	6,462.4	2,840.9	-9.3	2,840.9	0.00	0.00	0.00
9,300.0	90.13	359.89	6,462.2	2,940.9	-9.5	2,940.9	0.00	0.00	0.00
9,400.0	90.13	359.89	6,461.9	3,040.9	-9.7	3,040.9	0.00	0.00	0.00
9,500.0	90.13	359.89	6,461.7	3,140.9	-9.9	3,140.9	0.00	0.00	0.00
9,600.0	90.13	359.89	6,461.5	3,240.9	-10.1	3,240.9	0.00	0.00	0.00
9,700.0	90.13	359.89	6,461.3	3,340.9	-10.2	3,340.9	0.00	0.00	0.00
9,800.0	90.13	359.89	6,461.0	3,440.9	-10.4	3,440.9	0.00	0.00	0.00

<b>Database:</b>	landmark	<b>Local Co-ordinate Reference:</b>	Well Cervi 03N-63W-26-1N
<b>Company:</b>	Verdad Oil & Gas Corporation	<b>TVD Reference:</b>	WELL @ 4728.2ft (Xtreme 6 RKB - 16.2')
<b>Project:</b>	SEC.26-T3N-R63W	<b>MD Reference:</b>	WELL @ 4728.2ft (Xtreme 6 RKB - 16.2')
<b>Site:</b>	Cervi 03N-63W-26-1N Sec.26-T3N-R63W	<b>North Reference:</b>	True
<b>Well:</b>	Cervi 03N-63W-26-1N	<b>Survey Calculation Method:</b>	Minimum Curvature
<b>Wellbore:</b>	Wellbore #1		
<b>Design:</b>	Plan #4 (4-9-15)		

Planned Survey										
Measured Depth (ft)	Inclination (°)	Azimuth (°)	Vertical Depth (ft)	+N/-S (ft)	+E/-W (ft)	Vertical Section (ft)	Dogleg Rate (°/100ft)	Build Rate (°/100ft)	Turn Rate (°/100ft)	
9,900.0	90.13	359.89	6,460.8	3,540.9	-10.6	3,540.9	0.00	0.00	0.00	
10,000.0	90.13	359.89	6,460.6	3,640.9	-10.8	3,640.9	0.00	0.00	0.00	
10,100.0	90.13	359.89	6,460.4	3,740.9	-11.0	3,740.9	0.00	0.00	0.00	
10,200.0	90.13	359.89	6,460.1	3,840.9	-11.2	3,840.9	0.00	0.00	0.00	
10,300.0	90.13	359.89	6,459.9	3,940.9	-11.4	3,940.9	0.00	0.00	0.00	
10,400.0	90.13	359.89	6,459.7	4,040.9	-11.6	4,040.9	0.00	0.00	0.00	
10,500.0	90.13	359.89	6,459.5	4,140.9	-11.8	4,140.9	0.00	0.00	0.00	
10,600.0	90.13	359.89	6,459.2	4,240.9	-12.0	4,240.9	0.00	0.00	0.00	
10,700.0	90.13	359.89	6,459.0	4,340.9	-12.2	4,340.9	0.00	0.00	0.00	
10,800.0	90.13	359.89	6,458.8	4,440.9	-12.4	4,440.9	0.00	0.00	0.00	
10,900.0	90.13	359.89	6,458.5	4,540.9	-12.6	4,540.9	0.00	0.00	0.00	
11,000.0	90.13	359.89	6,458.3	4,640.9	-12.8	4,640.9	0.00	0.00	0.00	
11,051.3	90.13	359.89	6,458.2	4,692.2	-12.8	4,692.2	0.00	0.00	0.00	

Targets										
Target Name	Dip Angle (°)	Dip Dir. (°)	TVD (ft)	+N/-S (ft)	+E/-W (ft)	Northing (ft)	Easting (ft)	Latitude	Longitude	
460' Setback BHL	0.00	0.00	1.0	4,691.5	-1,300.0	1,318,468.36	3,305,932.63	40.202406	-104.404704	
- plan misses by 4868.3ft at 1.0ft MD (1.0 TVD, 0.0 N, 0.0 E)										
- Polygon										
Point 1			1.0	0.0	0.0	1,318,468.36	3,305,932.63			
Point 2			1.0	0.0	1,500.0	1,318,486.96	3,307,432.44			
460' Setback SHL	0.00	0.00	1.0	300.0	-1,300.0	1,314,077.39	3,305,987.10	40.190351	-104.404703	
- plan misses by 1334.2ft at 1.0ft MD (1.0 TVD, 0.0 N, 0.0 E)										
- Polygon										
Point 1			1.0	0.0	0.0	1,314,077.39	3,305,987.10			
Point 2			1.0	0.0	1,500.0	1,314,096.00	3,307,486.91			
SHL 160'FSL & 1317'I	0.00	0.00	1.0	0.0	0.0	1,313,793.58	3,307,290.66	40.189528	-104.400050	
- plan hits target										
- Point										
BHL 460'FNL & 1320'	0.00	0.00	6,458.2	4,692.2	-12.8	1,318,485.02	3,307,219.61	40.202408	-104.400096	
- plan hits target										
- Point										
Sectionline	0.00	0.00	1.0	-160.0	-1,300.0	1,313,617.46	3,305,992.80	40.189089	-104.404703	
- plan misses by 1309.8ft at 1.0ft MD (1.0 TVD, 0.0 N, 0.0 E)										
- Polygon										
Point 1			1.0	0.0	0.0	1,313,617.46	3,305,992.80			
Point 2			1.0	0.0	1,500.0	1,313,636.06	3,307,492.62			

Casing Points					
Measured Depth (ft)	Vertical Depth (ft)	Name	Casing Diameter (")	Hole Diameter (")	
6,771.3	6,467.9	7"	7	7-1/2	

<b>Database:</b>	landmark	<b>Local Co-ordinate Reference:</b>	Well Cervi 03N-63W-26-1N
<b>Company:</b>	Verdad Oil & Gas Corporation	<b>TVD Reference:</b>	WELL @ 4728.2ft (Xtreme 6 RKB - 16.2')
<b>Project:</b>	SEC.26-T3N-R63W	<b>MD Reference:</b>	WELL @ 4728.2ft (Xtreme 6 RKB - 16.2')
<b>Site:</b>	Cervi 03N-63W-26-1N Sec.26-T3N-R63W	<b>North Reference:</b>	True
<b>Well:</b>	Cervi 03N-63W-26-1N	<b>Survey Calculation Method:</b>	Minimum Curvature
<b>Wellbore:</b>	Wellbore #1		
<b>Design:</b>	Plan #4 (4-9-15)		

Plan Annotations				
Measured Depth (ft)	Vertical Depth (ft)	Local Coordinates		Comment
		+N/-S (ft)	+E/-W (ft)	
2,500.0	2,500.0	0.0	0.0	KOP - Start Build 1.00
3,707.1	3,702.7	-94.3	-3.1	Start Drop -2.00
5,952.0	5,947.1	-109.8	-3.6	KOP #2 - Start Build 11.00
11,051.3	6,458.2	4,692.2	-12.8	TD at 11051.3