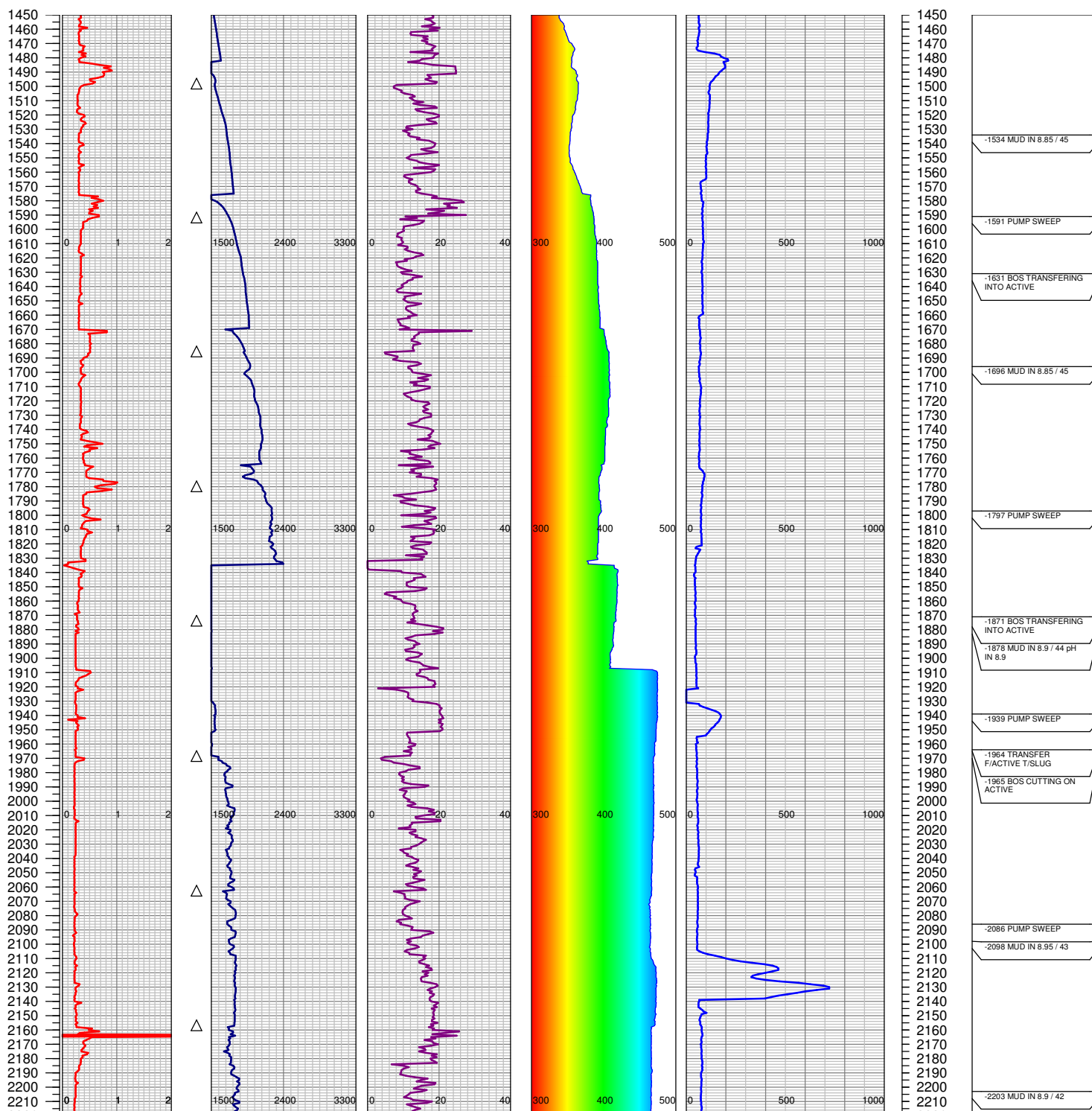
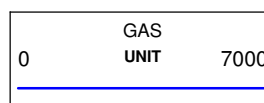
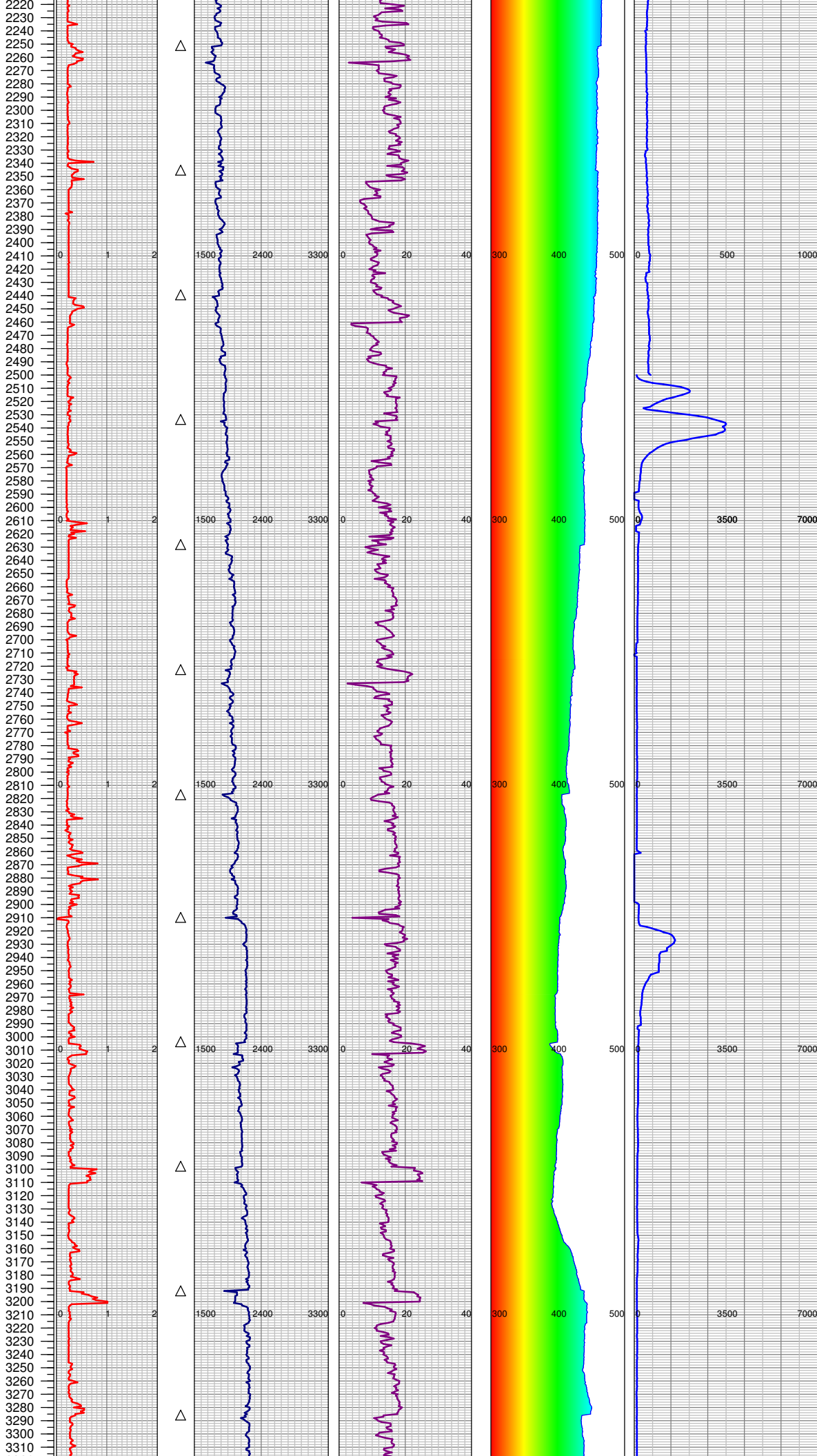


LOCATION: SEC. 28 T6S R96W
SURFACE HOLE: 1506' FSL , 2358' FWL
BOTTOM HOLE: 2329' FSL , 1526' FEL
SCALE: 1"=100'

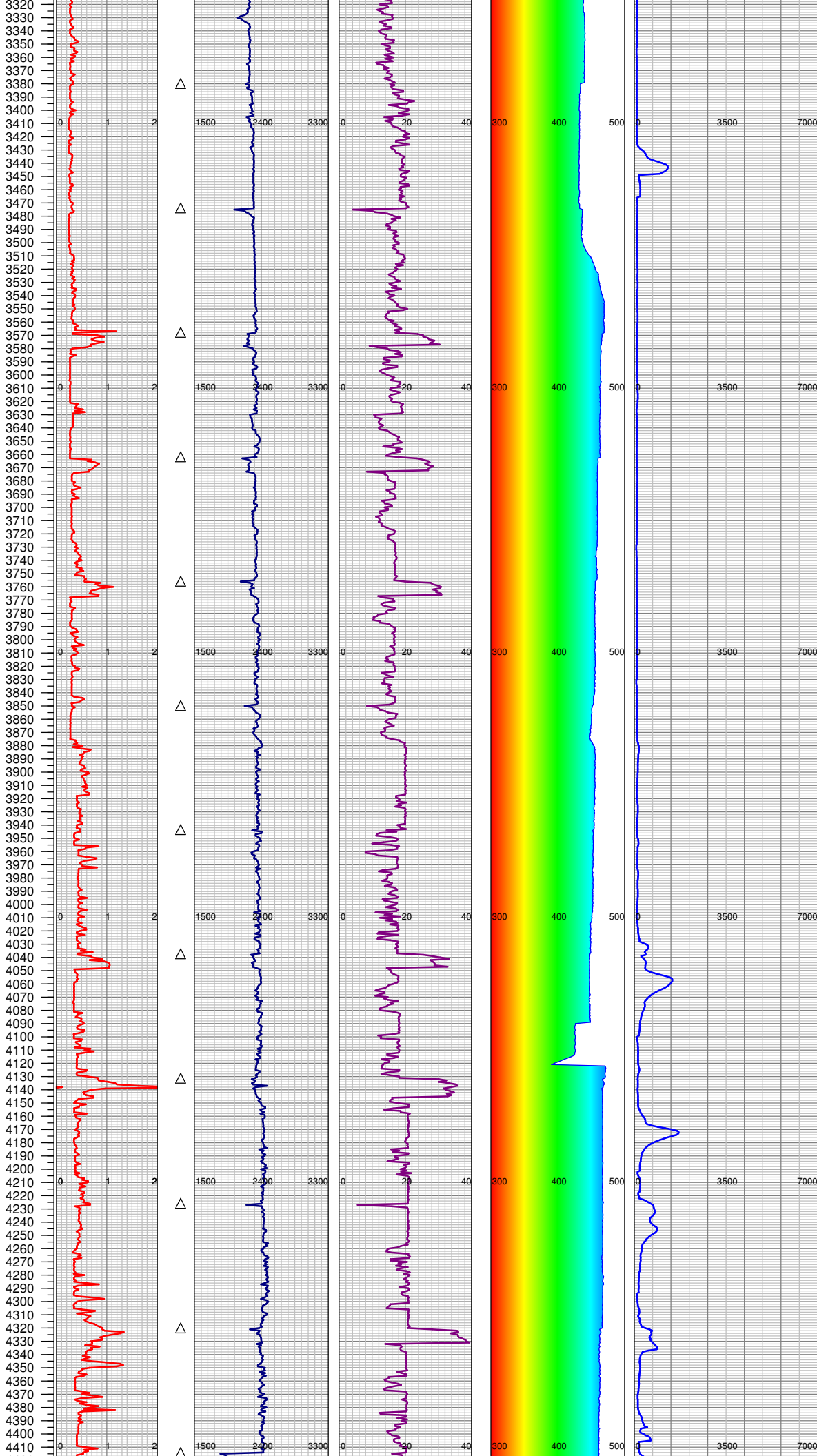


SPUD DATE: 11/24/2014
FGS BEGIN LOGGING: 11/27/2014
TD DATE: 11/30/2014
DATES LOGGED: 11/27/2014-11/30/2014

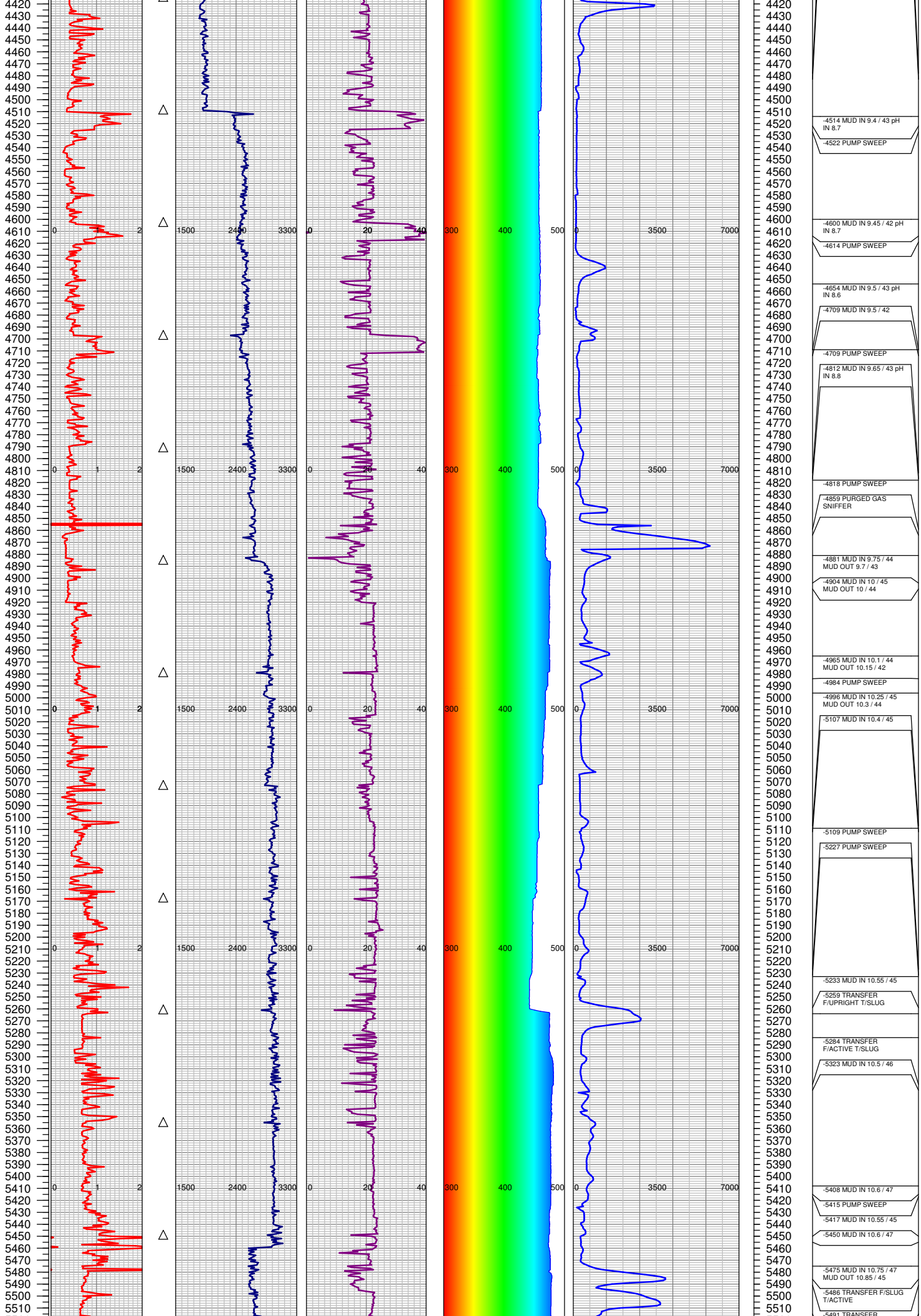


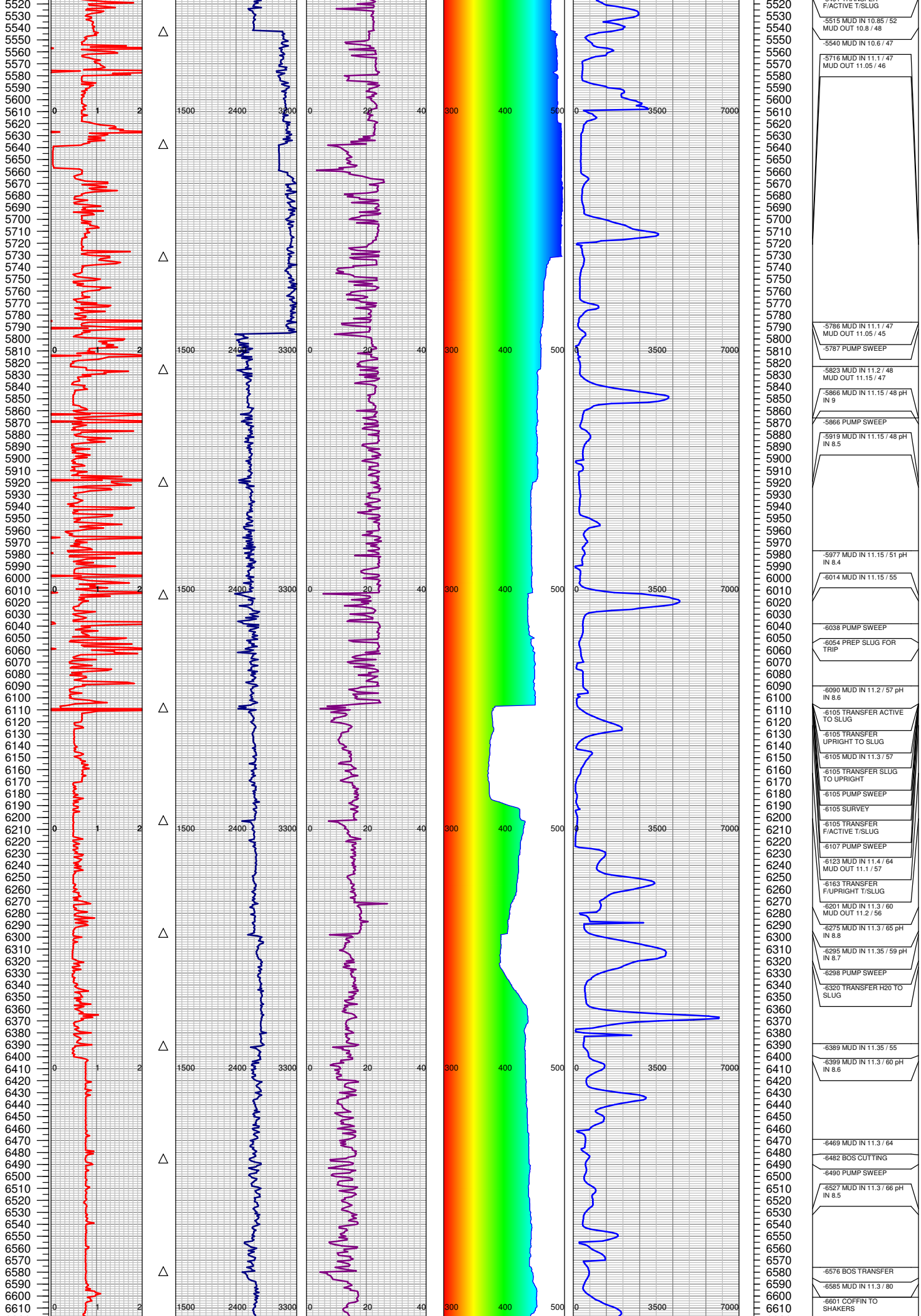


2220	
2230	
2240	
2250	
2260	-2263 PUMP SWEEP
2270	
2280	
2290	
2300	
2310	
2320	-2316 MUD IN 8.8 / 42 pH
2330	IN 8.9
2340	
2350	
2360	
2370	
2380	
2390	-2394 PUMP SWEEP
2400	
2410	
2420	-2421 MUD IN 8.95 / 43 pH
2430	IN 9
2440	-2436 MUD IN 9 / 41 pH IN
2450	8.8
2460	-2436 MUD IN 9.05 / 40
2470	
2480	-2436 PUMP SWEEP
2490	-2436 TRANSFER WATER
2500	TO SLUG
2510	
2520	
2530	
2540	
2550	
2560	
2570	
2580	
2590	
2600	
2610	
2620	
2630	
2640	
2650	
2660	
2670	
2680	
2690	
2700	
2710	
2720	
2730	
2740	
2750	
2760	
2770	
2780	
2790	
2800	
2810	
2820	
2830	
2840	
2850	
2860	
2870	
2880	
2890	
2900	
2910	-2910 GA - ZEROED
2920	
2930	
2940	
2950	
2960	
2970	
2980	
2990	-2988 MUD IN 9.1 / 42
3000	
3010	
3020	
3030	
3040	
3050	
3060	
3070	
3080	
3090	
3100	
3110	-3111 PUMP SWEEP
3120	
3130	-3124 TRANSFER WATER
3140	TO SLUG
3150	
3160	
3170	-3172 MUD IN 9.2 / 41
3180	
3190	-3189 RIG SERVICE
3200	
3210	-3201 MUD IN 9.2 / 40
3220	
3230	
3240	
3250	
3260	
3270	
3280	
3290	
3300	
3310	-3312 PUMP SWEEP

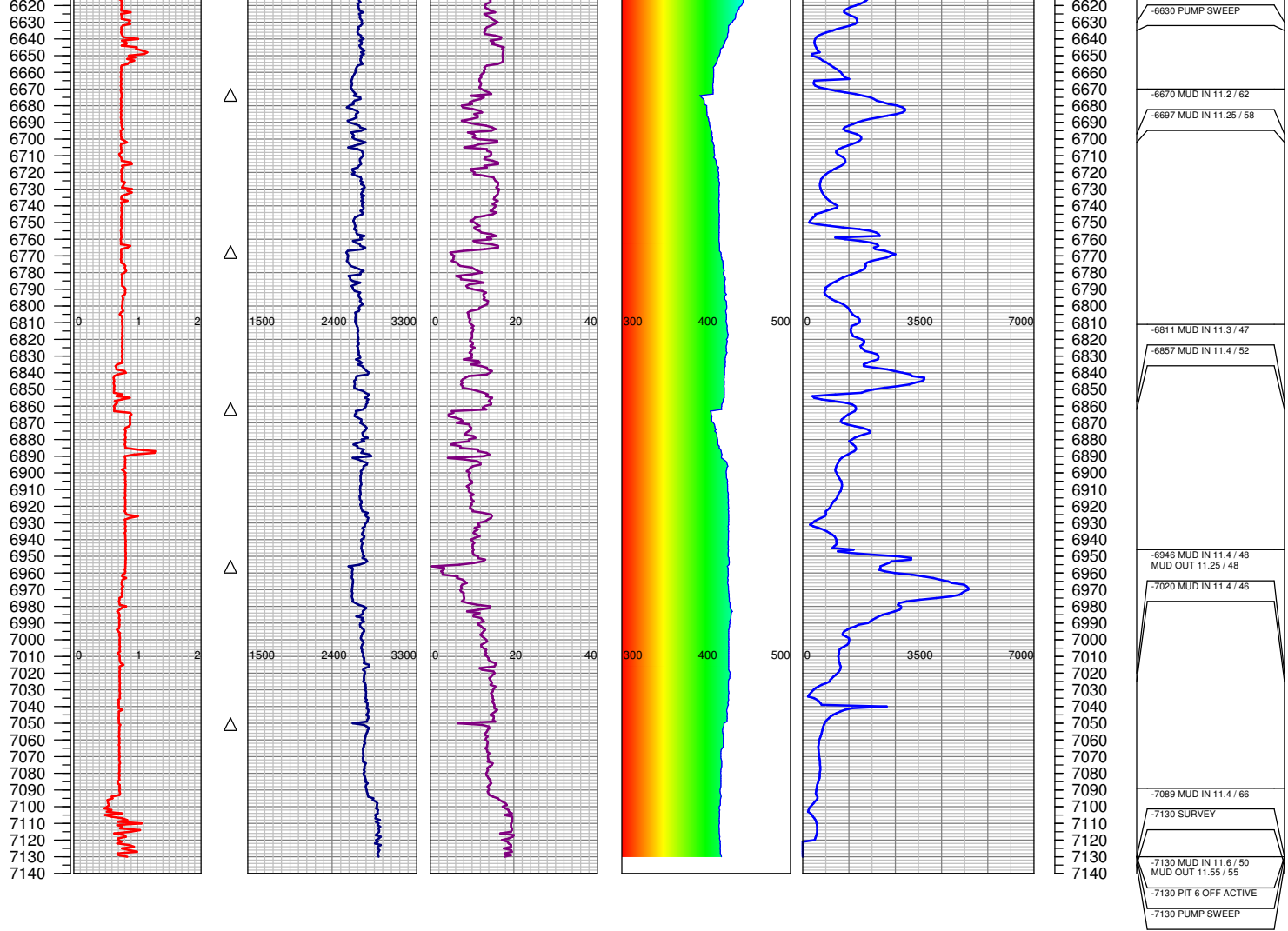


3320	-3315 PUMP SWEEP
3330	
3340	
3350	-3341 MUD IN 9.3 / 40
3360	
3370	
3380	
3390	
3400	
3410	
3420	
3430	
3440	
3450	
3460	
3470	-3470 TRANSFER F/SLUG T/ACTIVE
3480	-3470 TRANSFER WATER TO SLUG
3490	
3500	-3485 MUD IN 9.25 / 40
3510	
3520	-3489 TRANSFER WATER TO SLUG
3530	
3540	-3523 TRANSFER F/ACTIVE T/SLUG
3550	
3560	
3570	
3580	
3590	
3600	
3610	
3620	
3630	
3640	
3650	
3660	-3657 MUD IN 9.25 / 42
3670	-3666 PUMP SWEEP
3680	
3690	
3700	
3710	
3720	
3730	
3740	
3750	-3751 MUD IN 9.3 / 42
3760	
3770	
3780	
3790	
3800	
3810	
3820	
3830	
3840	
3850	-3848 MUD IN 9.25 / 43
3860	-3858 PUMP SWEEP
3870	-3869 BOS TRANSFERRING INTO ACTIVE
3880	
3890	
3900	
3910	
3920	
3930	
3940	
3950	
3960	
3970	
3980	
3990	
4000	
4010	
4020	
4030	
4040	-4043 MUD IN 9.3 / 43
4050	
4060	-4066 PUMP SWEEP
4070	
4080	-4082 PIT 6 OFF ACTIVE
4090	
4100	
4110	-4112 TRANSFER F/ACTIVE T/SLUG
4120	
4130	-4115 PIT 6 ON ACTIVE
4140	-4126 MUD IN 9.3 / 42
4150	-4303 MUD IN 9.3 / 42
4160	
4170	
4180	
4190	
4200	
4210	
4220	
4230	
4240	
4250	
4260	
4270	
4280	
4290	
4300	
4310	
4320	
4330	-4329 PUMP SWEEP
4340	
4350	-4476 MUD IN 9.4 / 41 pH IN 8.8
4360	
4370	
4380	
4390	
4400	
4410	





F/ACTIVE T/SLUG
-5515 MUD IN 10.85 / 52
MUD OUT 10.8 / 48
-5540 MUD IN 10.6 / 47
-5716 MUD IN 11.1 / 47
MUD OUT 11.05 / 46
-5786 MUD IN 11.1 / 47
MUD OUT 11.05 / 45
-5787 PUMP SWEEP
-5823 MUD IN 11.2 / 48
MUD OUT 11.15 / 47
-5866 MUD IN 11.15 / 48 pH
IN 9
-5866 PUMP SWEEP
-5819 MUD IN 11.15 / 48 pH
IN 8.5
-5977 MUD IN 11.15 / 51 pH
IN 8.4
-6014 MUD IN 11.15 / 55
-6038 PUMP SWEEP
-6054 PREP SLUG FOR
TRIP
-6090 MUD IN 11.2 / 57 pH
IN 8.6
-6105 TRANSFER ACTIVE
TO SLUG
-6105 TRANSFER
UPRIGHT TO SLUG
-6105 MUD IN 11.3 / 57
-6105 TRANSFER SLUG
TO UPRIGHT
-6105 PUMP SWEEP
-6105 SURVEY
-6105 TRANSFER
F/ACTIVE T/SLUG
-6107 PUMP SWEEP
-6123 MUD IN 11.4 / 64
MUD OUT 11.1 / 57
-6163 TRANSFER
F/UPRIGHT T/SLUG
-6201 MUD IN 11.3 / 60
MUD OUT 11.2 / 56
-6275 MUD IN 11.3 / 65 pH
IN 8.8
-6295 MUD IN 11.35 / 59 pH
IN 8.7
-6298 PUMP SWEEP
-6320 TRANSFER H2O TO
SLUG
-6389 MUD IN 11.35 / 55
-6399 MUD IN 11.3 / 60 pH
IN 8.6
-6469 MUD IN 11.3 / 64
-6482 BOS CUTTING
-6490 PUMP SWEEP
-6527 MUD IN 11.3 / 66 pH
IN 8.5
-6576 BOS TRANSFER
-6585 MUD IN 11.3 / 80
-6601 COFFIN TO
SHAKERS



TOTAL DEPTH = 7130'

FGS RELEASED: 11/30/2014