



FILE NO: CH093576	COMPANY WELL FIELD COUNTY	WPX ENERGY WPX GM 333-28 GRAND VALLEY GARFIELD	STATE COLORADO
API NO: 05045225000000			

Version 28 GS 96W GM 323-28 PAD H&P 318	LOCATION: SHL: 1506' FSL & 2358' FWL BHL: 2329' FSL & 1526' FEL (NWSE) SEC 28 TWP 6S RGE 96W	OTHER SERVICES BOND LOG
--	---	----------------------------

PERMANENT DATUM LOG MEASURED FROM DRILL. MEAS. FROM	GL KB KB GL	ELEVATION 24 FT 5476 FT ABOVE P.D.	ELEVATIONS: KB 5500 FT DF GL 5476 FT
---	----------------------	---	---

DATE	1-Jan-2015		
RUN	TRIP	1	1
SERVICE ORDER	US093576		
DEPTH DRILLER	7088 FT		
DEPTH LOGGER	7040 FT		
BOTTOM LOGGED INTERVAL	7030 FT		
TOP LOGGED INTERVAL	24 FT		
TIME STARTED	1300		
TIME FINISHED	1830		
OPERATOR RIG TIME	5 HOURS		
TYPE OF FLUID IN HOLE	WATER		
FLUID DENSITY	NA		
FLUID SALINITY	NA		
FLUID LEVEL	60 FT		
LOGGED CEMENT TOP	NA		
WELLHEAD PRESSURE	0 PSI		
MAXIMUM HOLE DEVIATION	NA		
NOMINAL LOGGING SPEED	10 FMIN		
MAX. RECORDED TEMP.	231 DEGF		
REFERENCE LOG	BAKER HUGHES BOND LOG		
REFERENCE LOG DATE	1-Jan-2015		
EQUIP. NO.	LOCATION	4271	GRAND JCT.
RECORDED BY	FLOYD RENEAU		
WITNESSED BY	JEFF BRADY		

IN MAKING INTERPRETATIONS OF LOGS OUR EMPLOYEES WILL GIVE THE CUSTOMER THE BENEFIT OF THEIR BEST JUDGEMENT. BUT SINCE ALL INTERPRETATIONS ARE OPINIONS BASED ON INFERENCES FROM ELECTRICAL OR OTHER MEASUREMENTS, WE CANNOT, AND WE DO NOT GUARANTEE THE ACCURACY OR CORRECTNESS OF ANY INTERPRETATION. WE SHALL NOT BE LIABLE OR RESPONSIBLE FOR ANY LOSS, COST, DAMAGES, OR EXPENSES WHATSOEVER INCURRED OR SUSTAINED BY THE CUSTOMER RESULTING FROM ANY INTERPRETATION MADE BY ANY OF OUR EMPLOYEES.

BOREHOLE RECORD		
BIT SIZE	FROM	TO
13.5 IN	24 FT	1343 FT
8.75 IN	1343 FT	7088 FT

CASING RECORD				
SIZE	WEIGHT	GRADE	FROM	TO
9.625 IN			24 FT	1343 FT
4.5 IN	11.6 LB/F	I-80	24 FT	7088 FT

REMARKS

RUN 1 TRIP 1: All data on this log is shifted and depth matched using the Gamma Ray curve to the Baker Hughes bond log dated 1/1/2015 at the client's request.

The amount of linear shift is feet.

Logged in PNC-3D mode.

BHT = 231degF

SJ = 3837'- 3860'

Thanks you for choosing Baker-Hughes.

EQUIPMENT DATA

RUN	TRIP	TOOL	SERIES NO.	SERIAL NO.	POSITION
1	1	PCM	8250EA	10397894	FREE
1	1	TEL/CCL	8248ED	10387150	FREE
1	1	GR	2812LA	10274382	FREE
1	1	RPM	8281EA	10423671	FREE
1	1	RPM	8283PA	10585555	FREE
1	1	RPM	8281FA	10460082	FREE
1	1	TEMP	8255XA	Z120516	FREE

MAIN SECTION PNC-3D MODE

ECLIPS 6.2wu1 PC-ECLIPS General Release Rel 6.2w Update 1 Fri Apr 25 10:54:53 Central Daylight Time 2014
Updates: 46 Patches: 5

Plotted: Fri Jan 02 10:09:01 2015

PARAMETER AND FILTER SUMMARY REPORT

FILE: C:\dat1a\093576\333\333_RPM_MAIN.fvpdf
LOGGING MODE: DEPTH 3726.750 ft DIRECTION: UP
TOP DEPTH: 3726.750 ft BOTTOM DEPTH: 7041.750 ft

SYMMETRIC FILTER

MEASUREMENT TYPE	PARAMETER	VALUE	UNITS	INTERVAL (ft)
GR	FILTER ()	medium (1)		TOP BOTTOM

RPM PROCESSING

MEASUREMENT TYPE	PARAMETER	VALUE	UNITS	INTERVAL (ft)
PNC Parameters	BOREHOLE CONTENTS	FLUID		TOP BOTTOM
	OPEN/CASED HOLE	CASED HOLE		" "
	BOREHOLE SIZE	8.50	in	" "
	CASING SIZE	4.50	in	" "
	MATRIX	SANDSTONE		" "
	CORRECTION BUFFER	11		" "

CURVE DESCRIPTION REPORT

CURVE NAME	CREATION DATE	CURVE DESCRIPTION
F1:CCL	Jan 2 09:39:48 2015	CASING COLLAR LOCATOR
F1:GR	Jan 2 09:39:49 2015	GAMMA RAY
F1:ISS	Jan 2 09:39:49 2015	INELASTIC SHORT SPACE COUNT RATE
F1:LS	Jan 2 09:39:49 2015	LONG SPACE COUNT RATE
F1:RATO	Jan 2 09:39:49 2015	SHORT/LONG SPACE COUNT RATE RATIO
F1:RICS	Jan 2 09:39:49 2015	SHORT SPACE INELASTIC TO CAPTURE COUNT RATE RATIO (ISS/CSS)
F1:SGFC	Jan 2 09:39:50 2015	CORRECTED FORMATION SIGMA
F1:SS	Jan 2 09:39:50 2015	SHORT SPACE COUNT RATE

CURVE MEASURE POINT OFFSET

CURVE	OFFSET (ft)	CURVE	OFFSET (ft)	CURVE	OFFSET (ft)	CURVE	OFFSET (ft)
CCL	25.00	ISS	12.75	RATO	12.75	SGFC	12.75
GR	22.75	LS	12.75	RICS	12.75	SS	12.75

Presentation : BHUGHES-06627:C:\dat1a\093576\333_RPM_MAIN.fvpdf [5"/100' Scale]
Plot Interval : 3728 - 7050 Feet

Data File 1 : F1 : BHUGHES-06627:C:\dat1a\093576\333_RPM_MAIN.xtf
Created On : Jan 2 09:39:48 2015
Company : WBY ENERGY

Company : WPX ENERGY
Well : WPX GM 333-28
Field : GRAND VALLEY
File Interval : 21.25 - 7041 Feet
OCT : n354h

GR BACKUP

FEET

ISS [iss]

1E+006

(1)

GAMMA RAY [gr]

150

(gAPI)

ISS

GR

3800

SHORT JOINT

LS [ls]

29000

(1)

SS [ss]

290000

(1)

RATO [rato]

17

0

(1)

RICS [rics]

36

6

(1)

SGFC [sgfc]

60

0

(1)

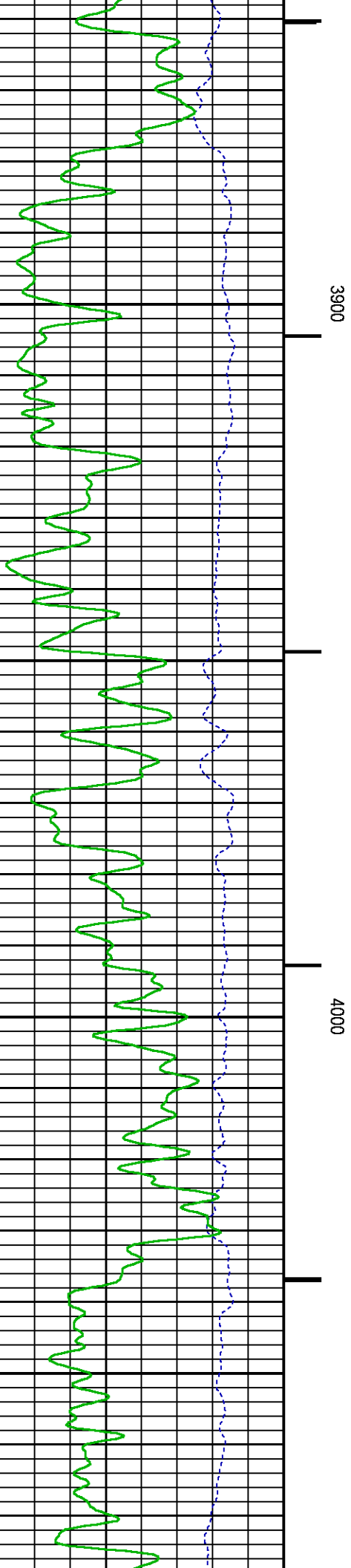
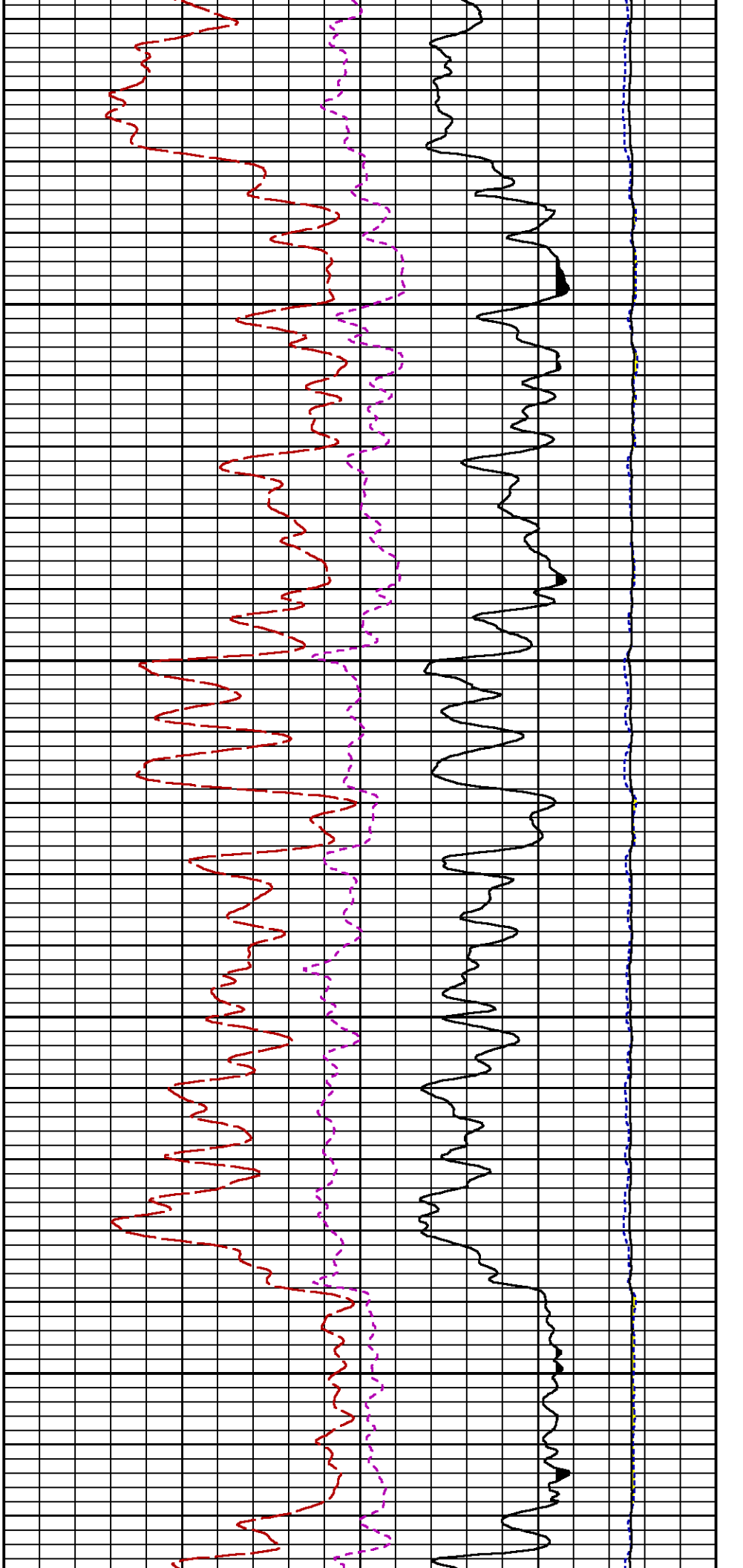
LS

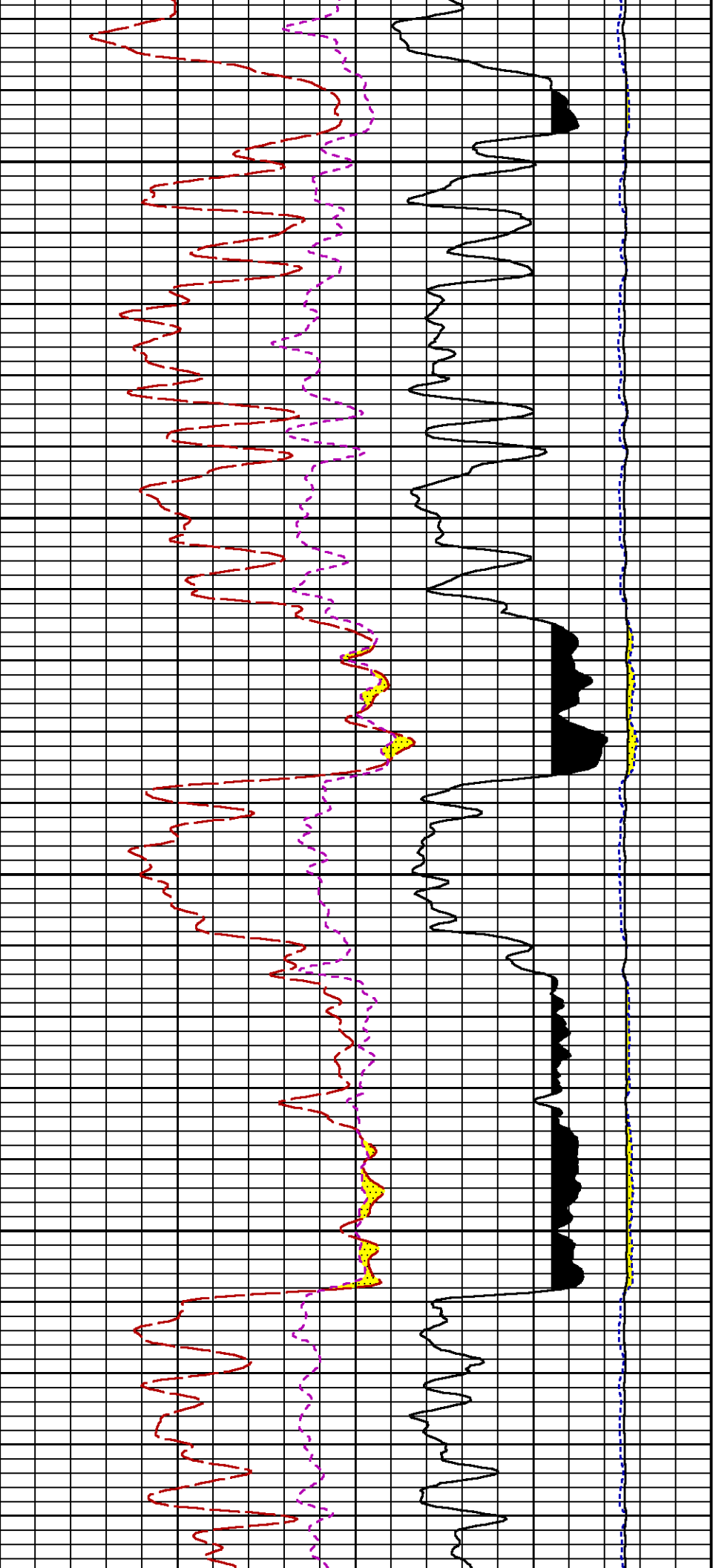
SS

RATO

RICS

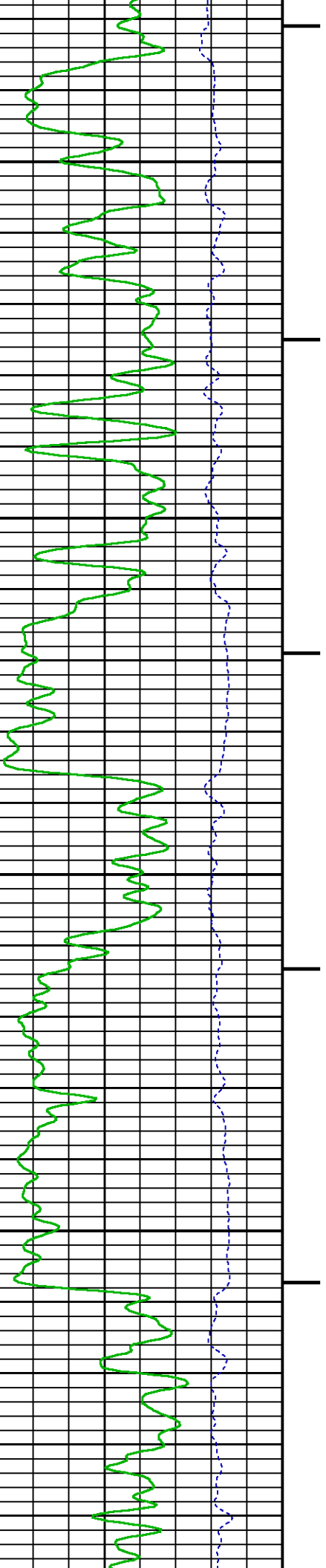
SGFC

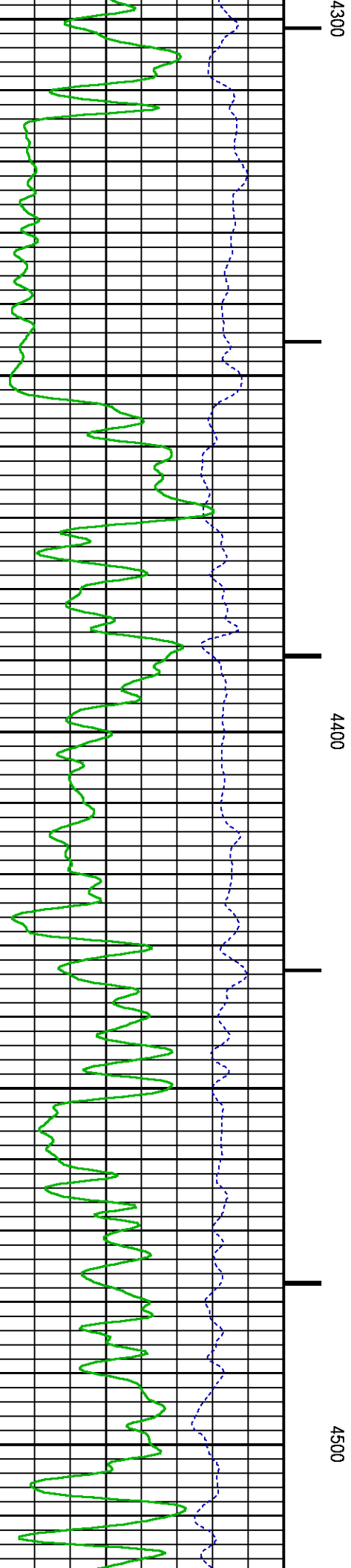
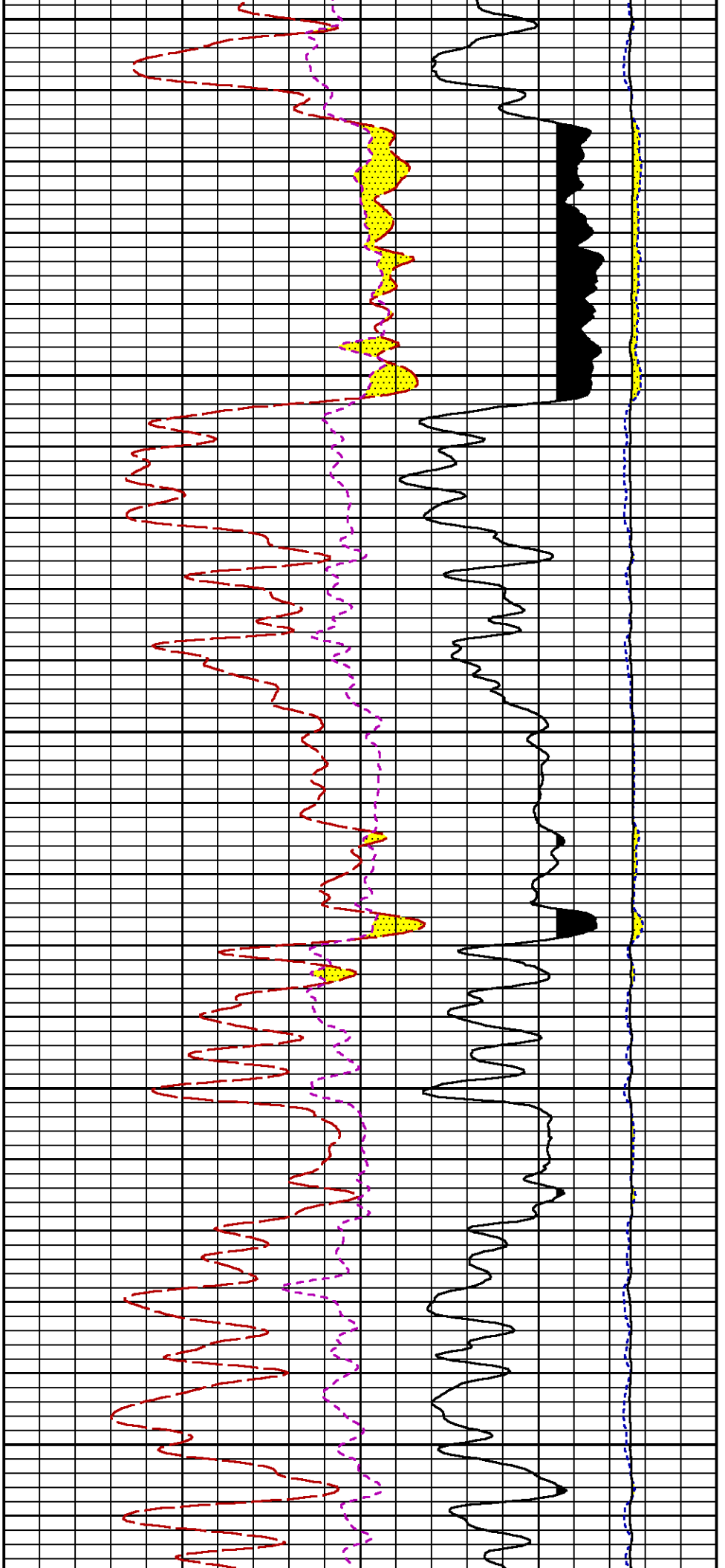


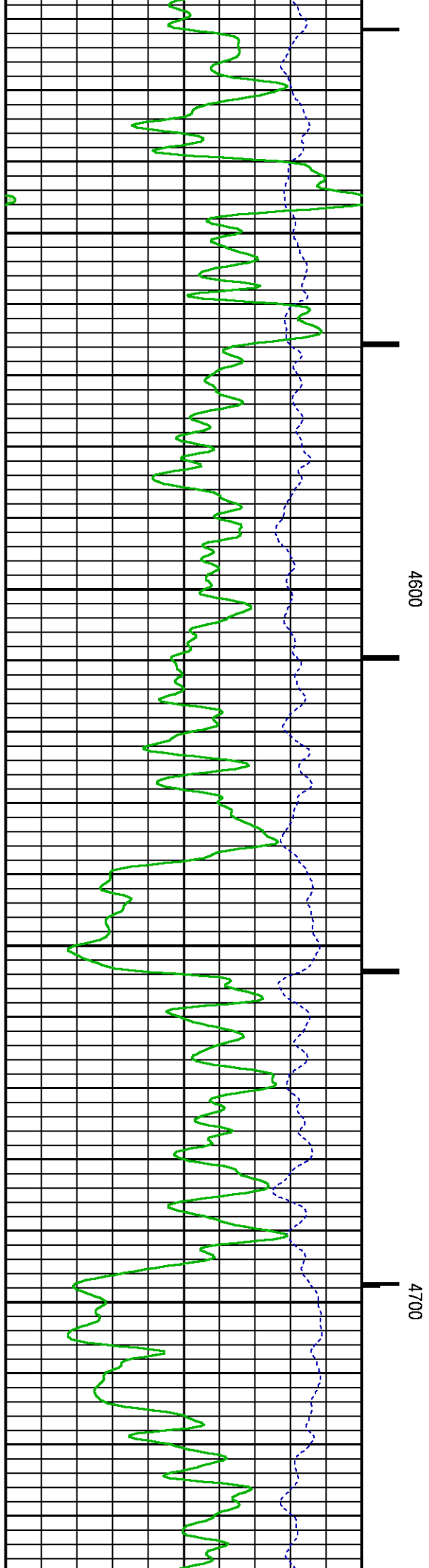
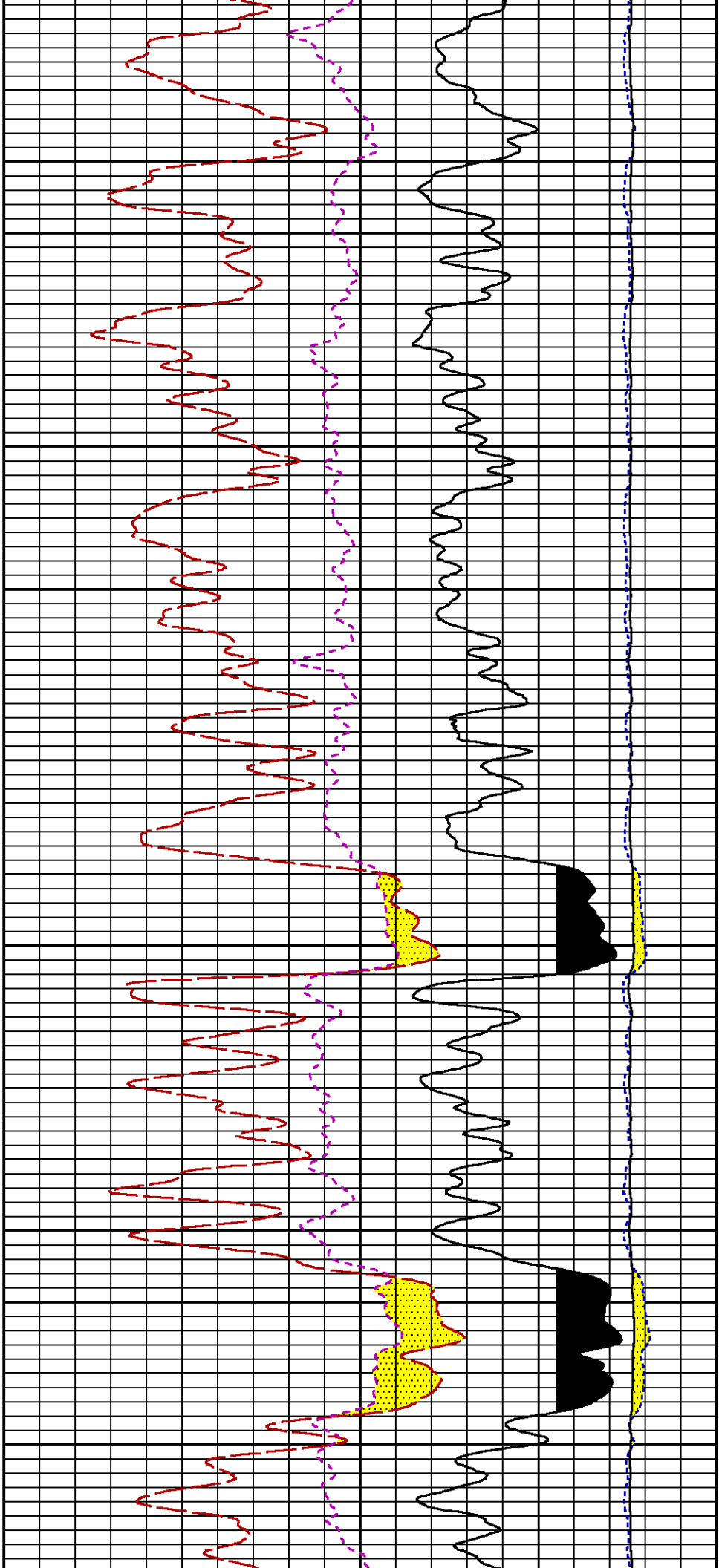


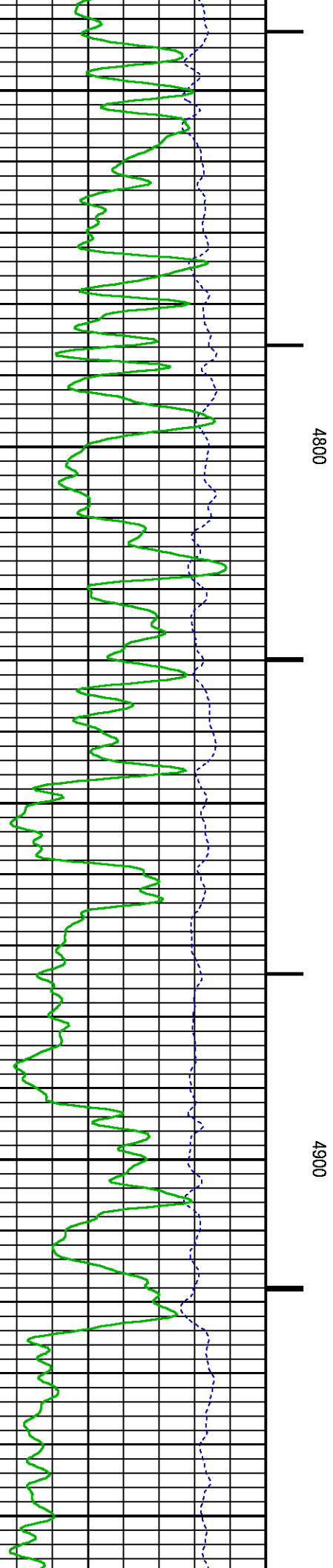
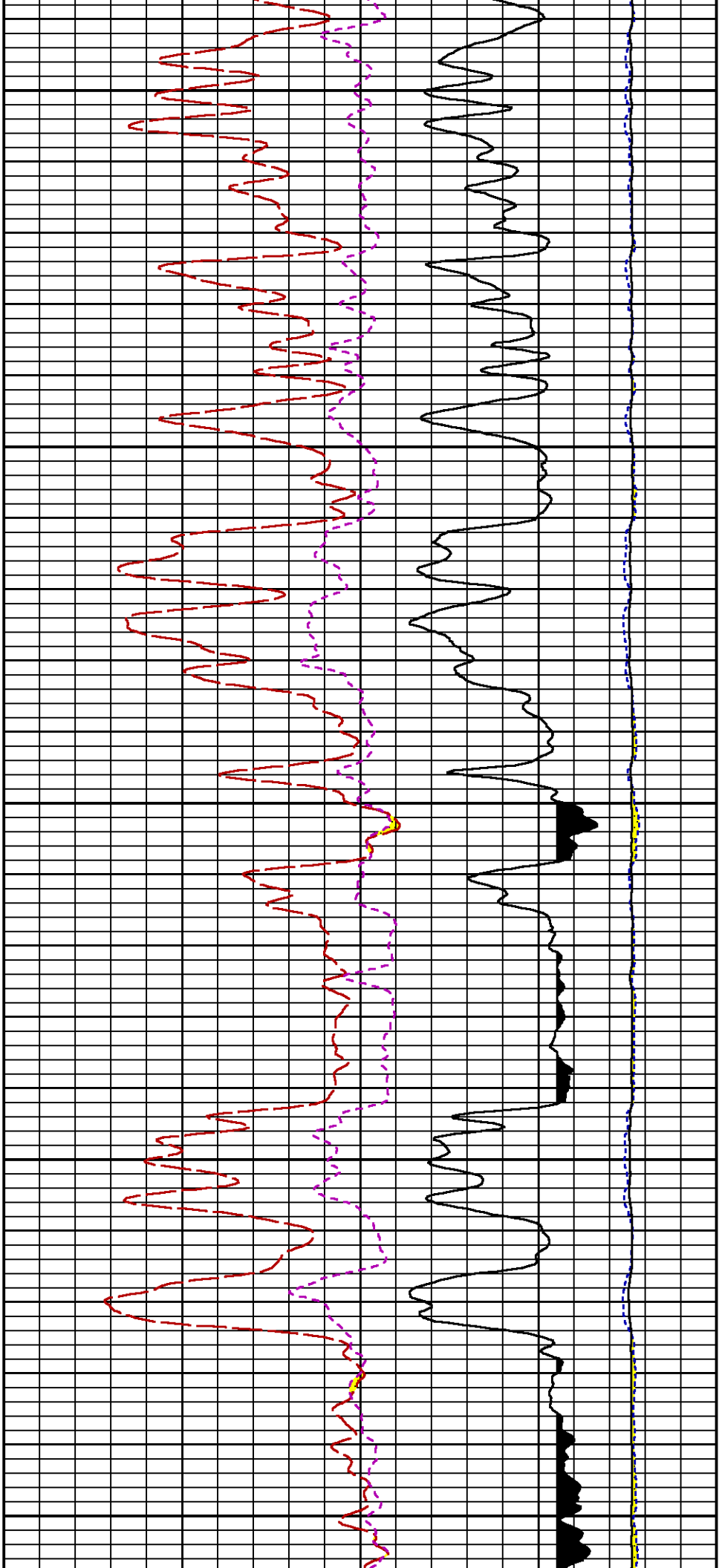
4100

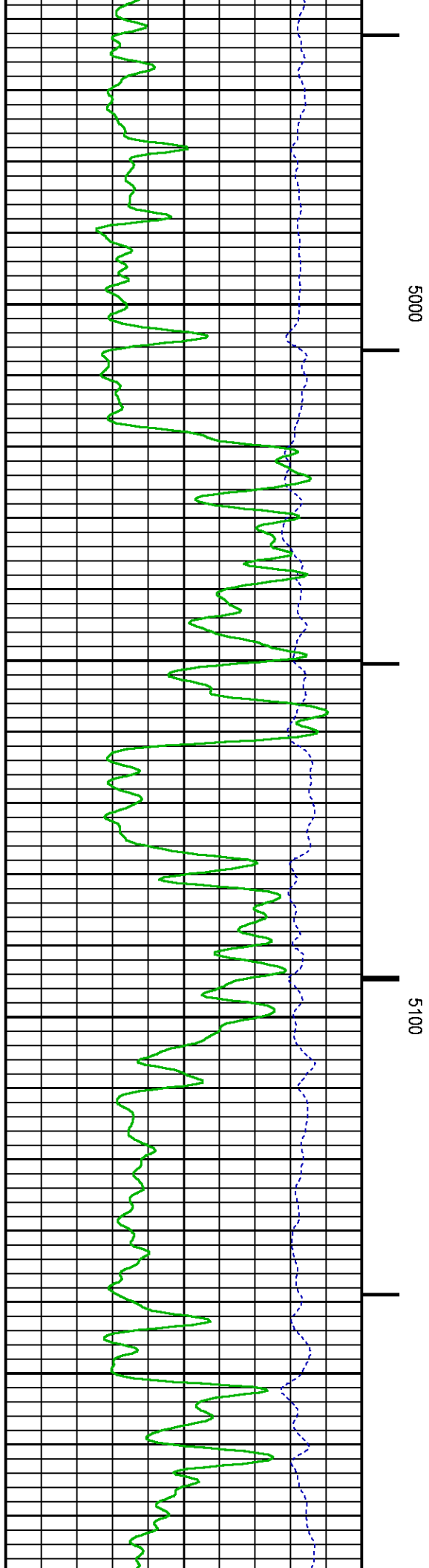
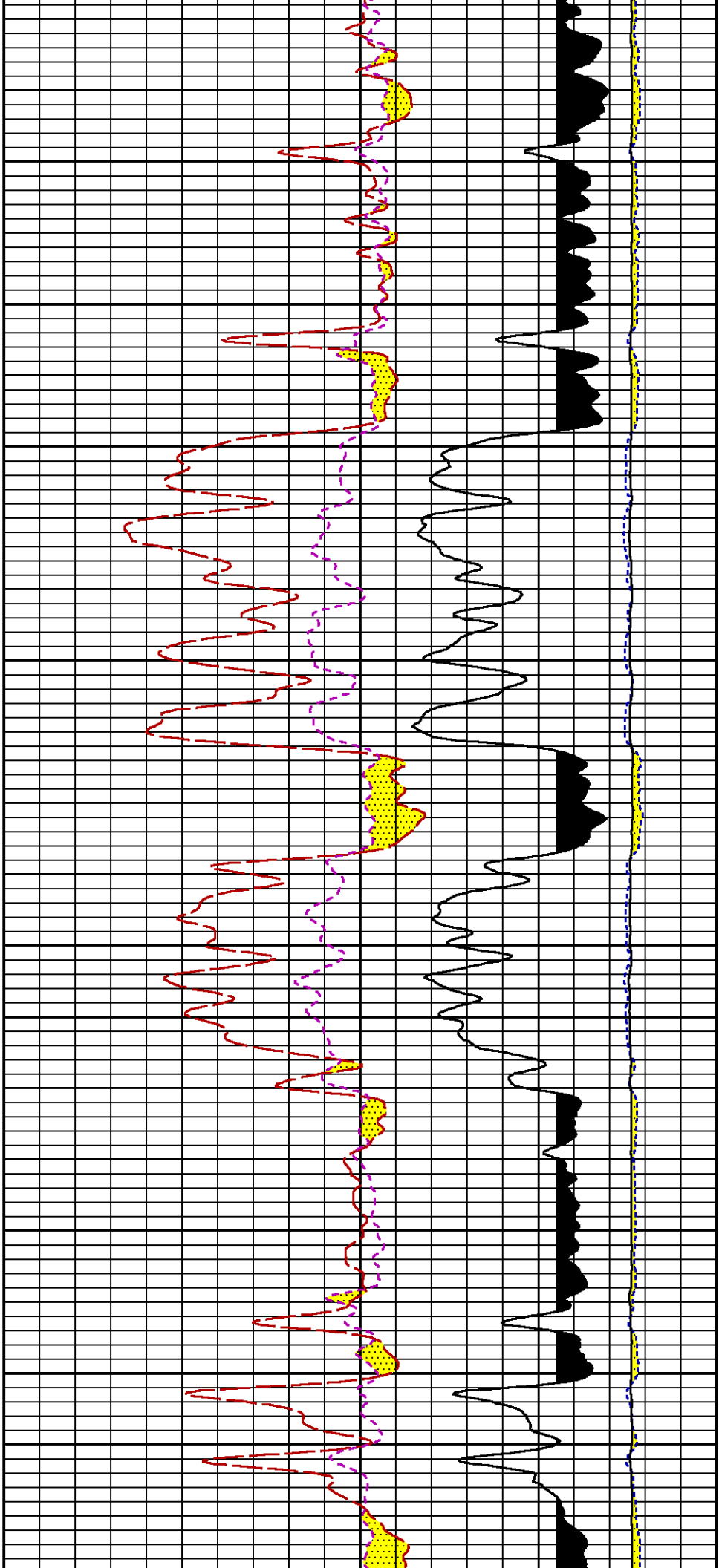
4200

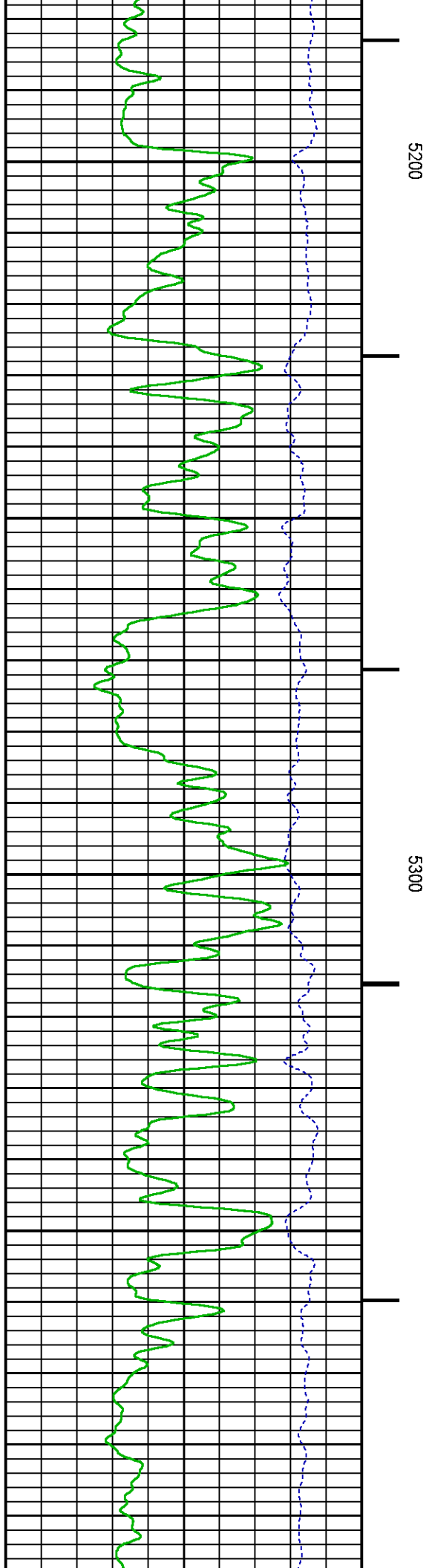
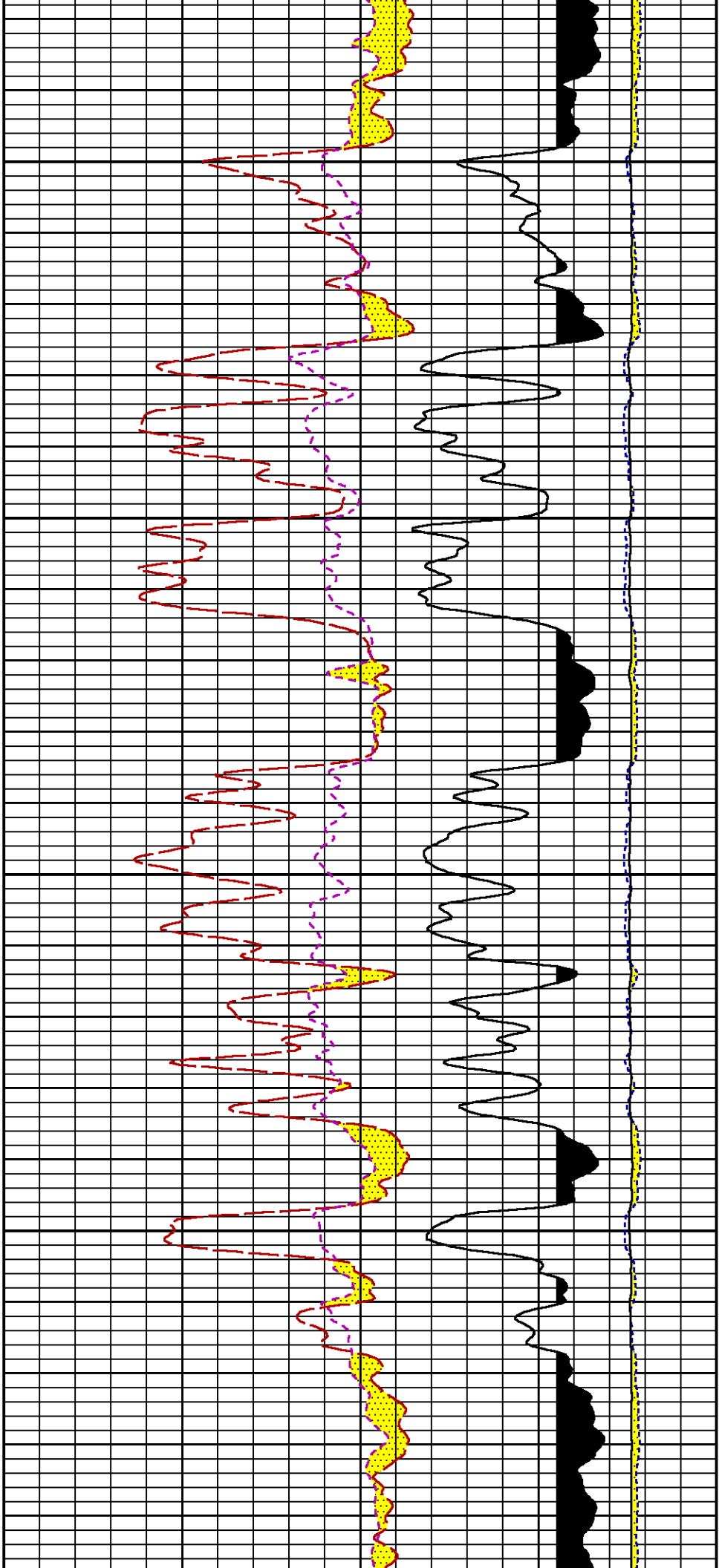


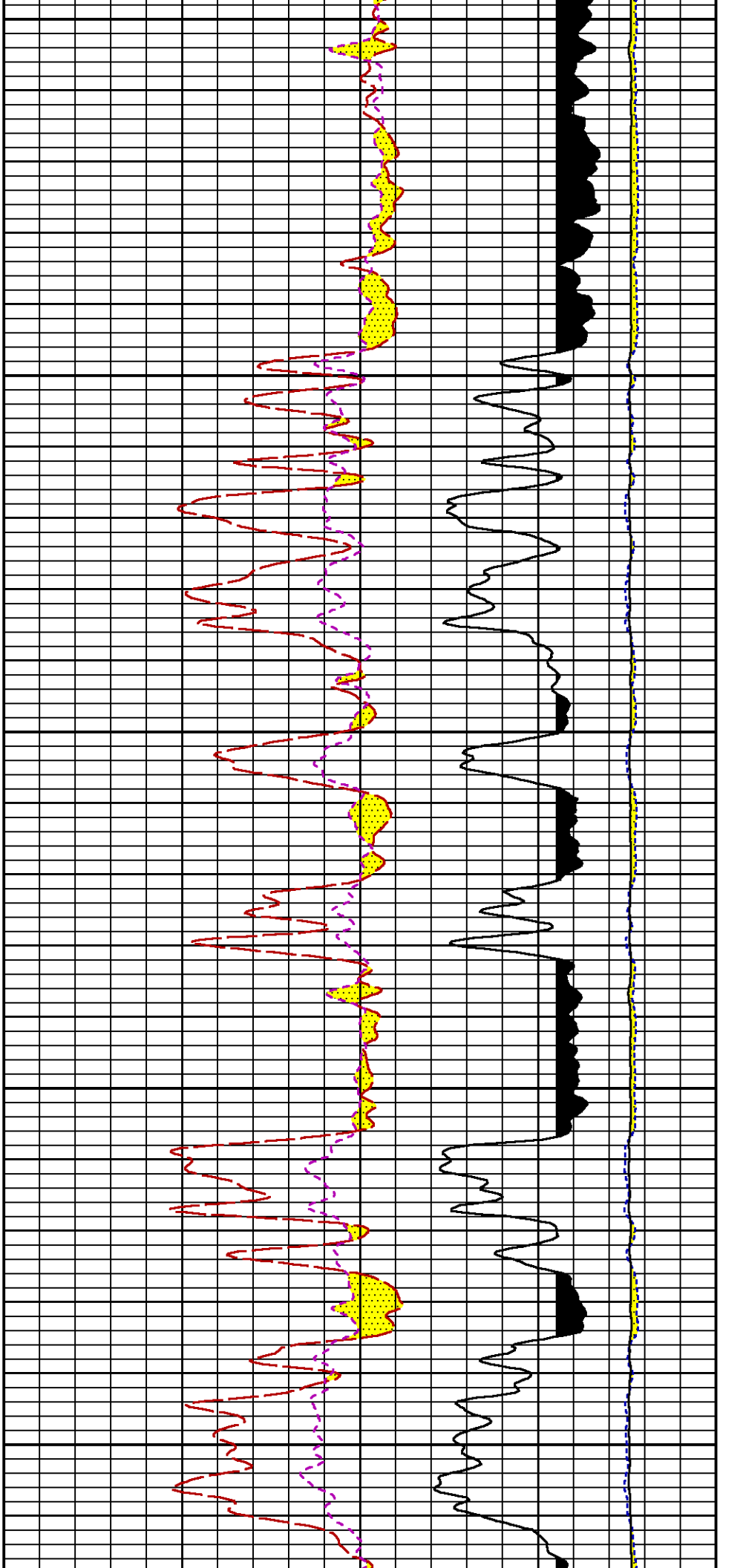








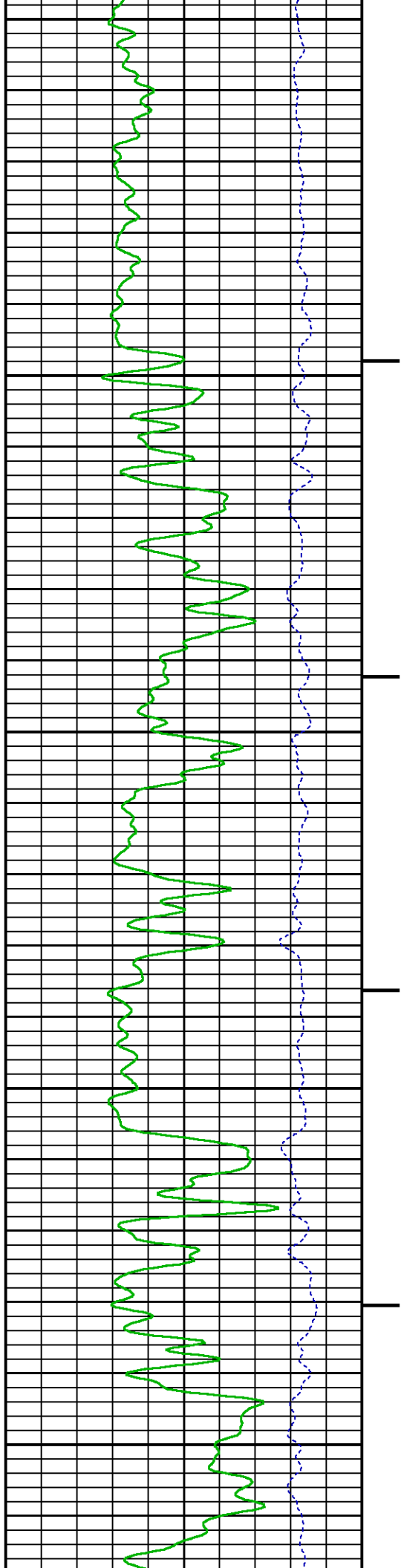


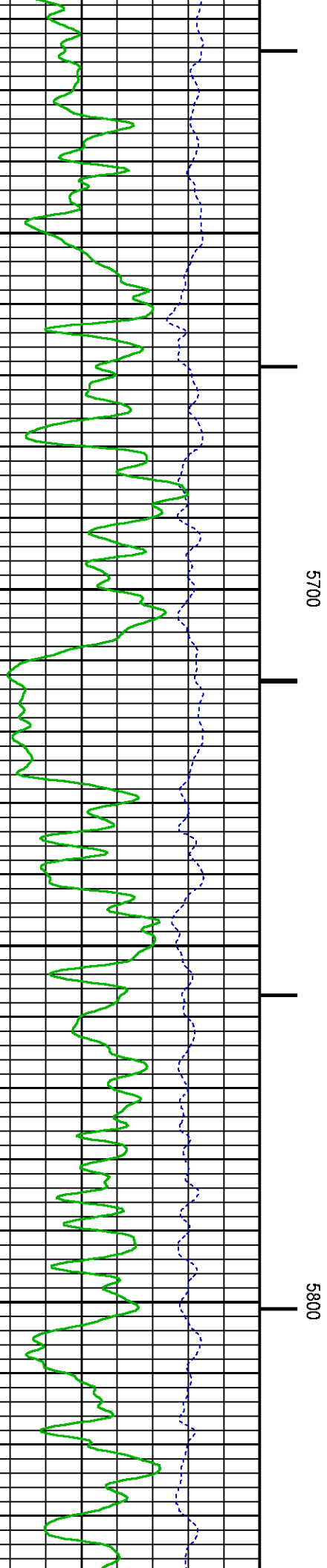
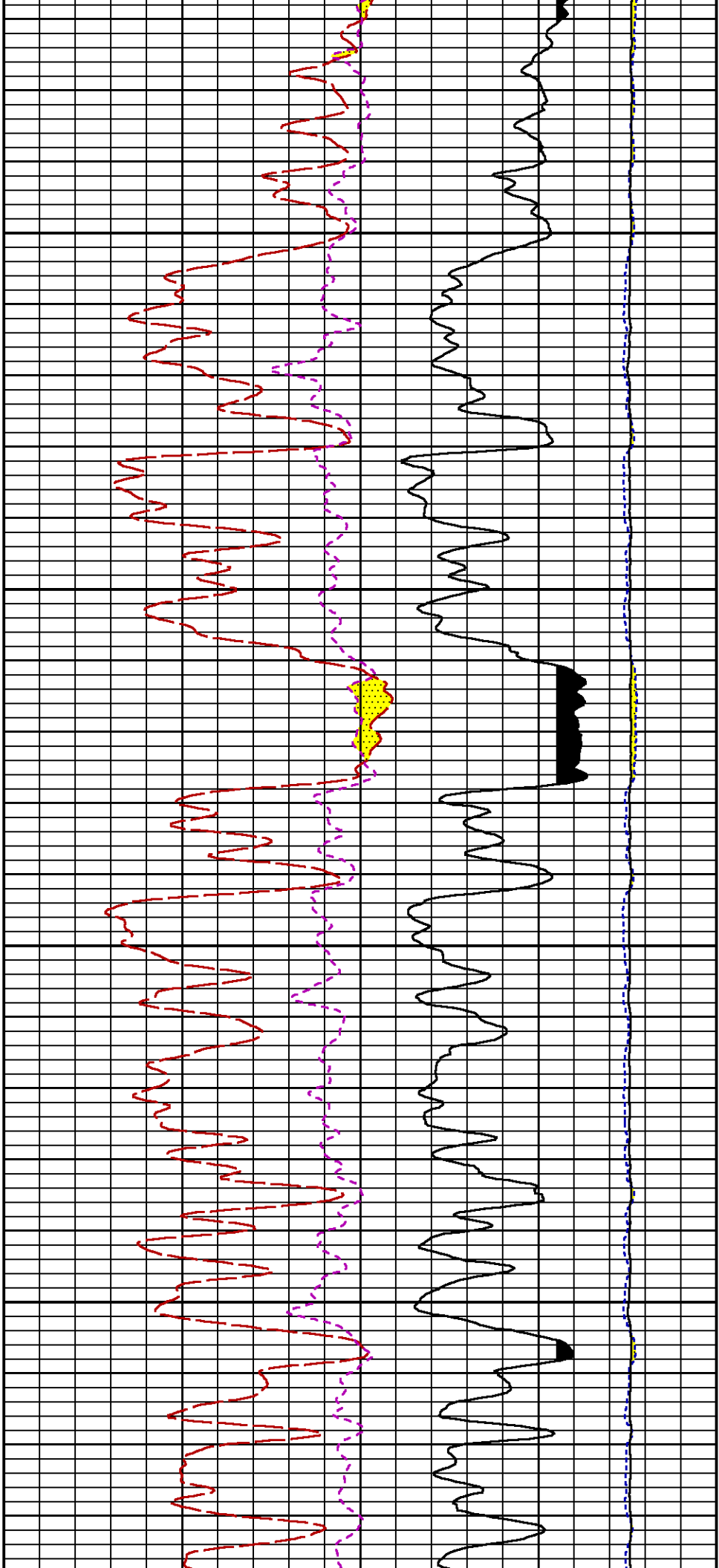


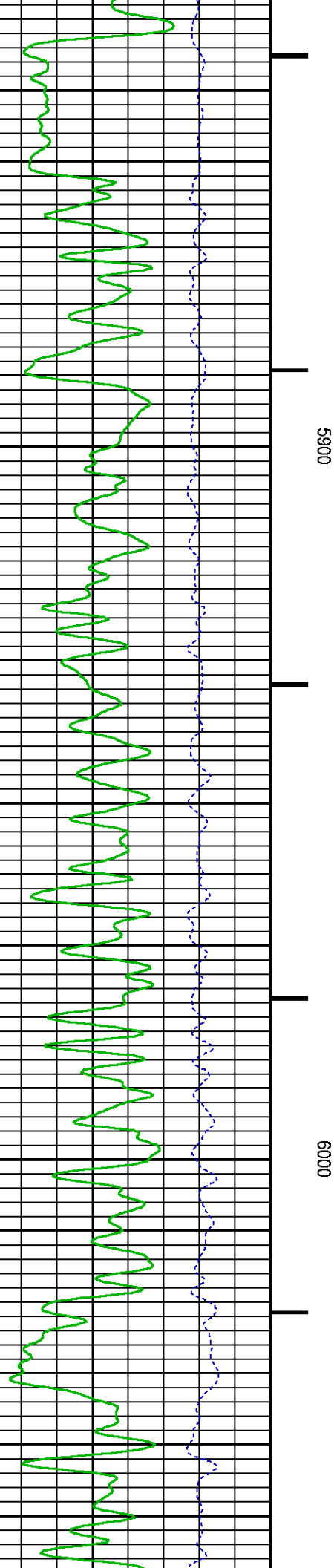
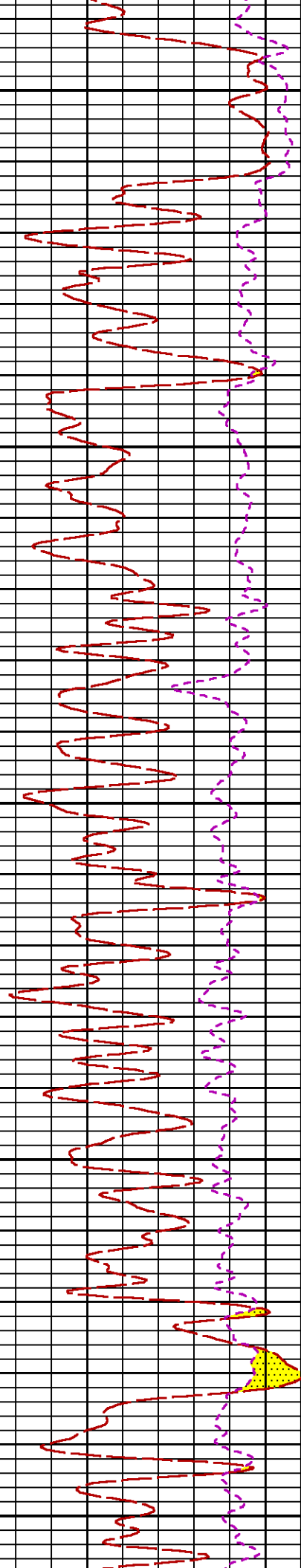
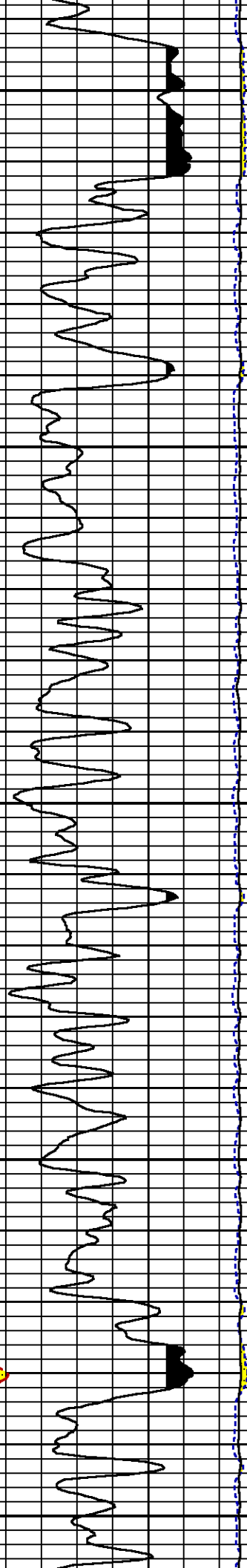
5400

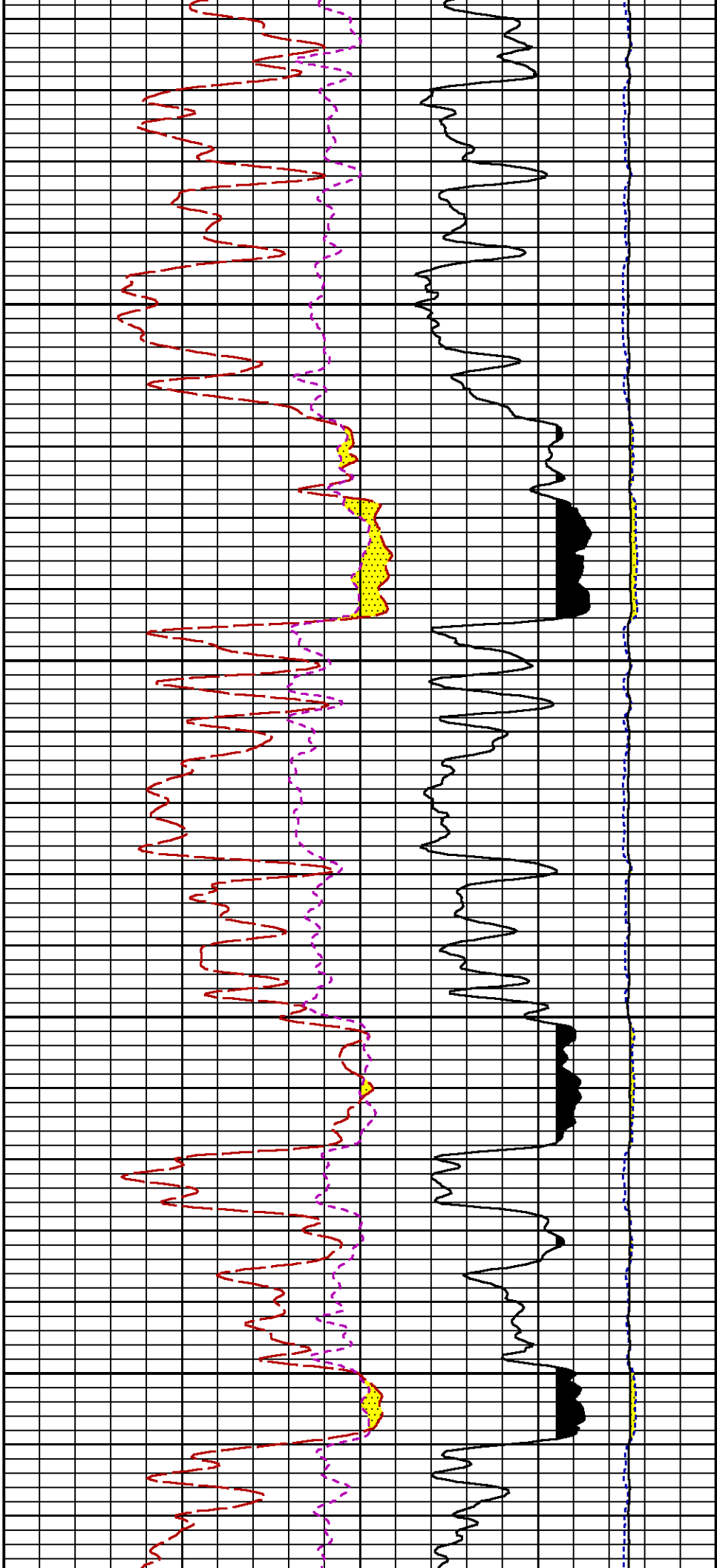
5500

5600



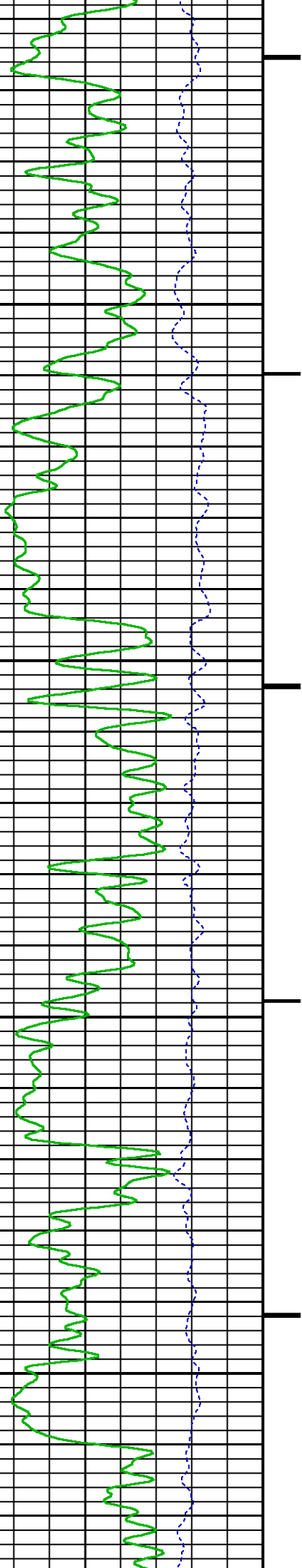


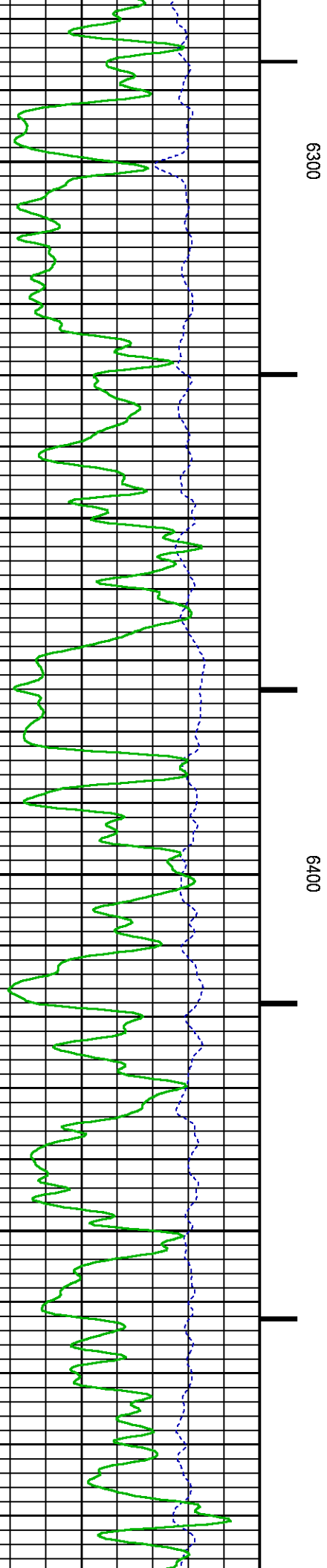
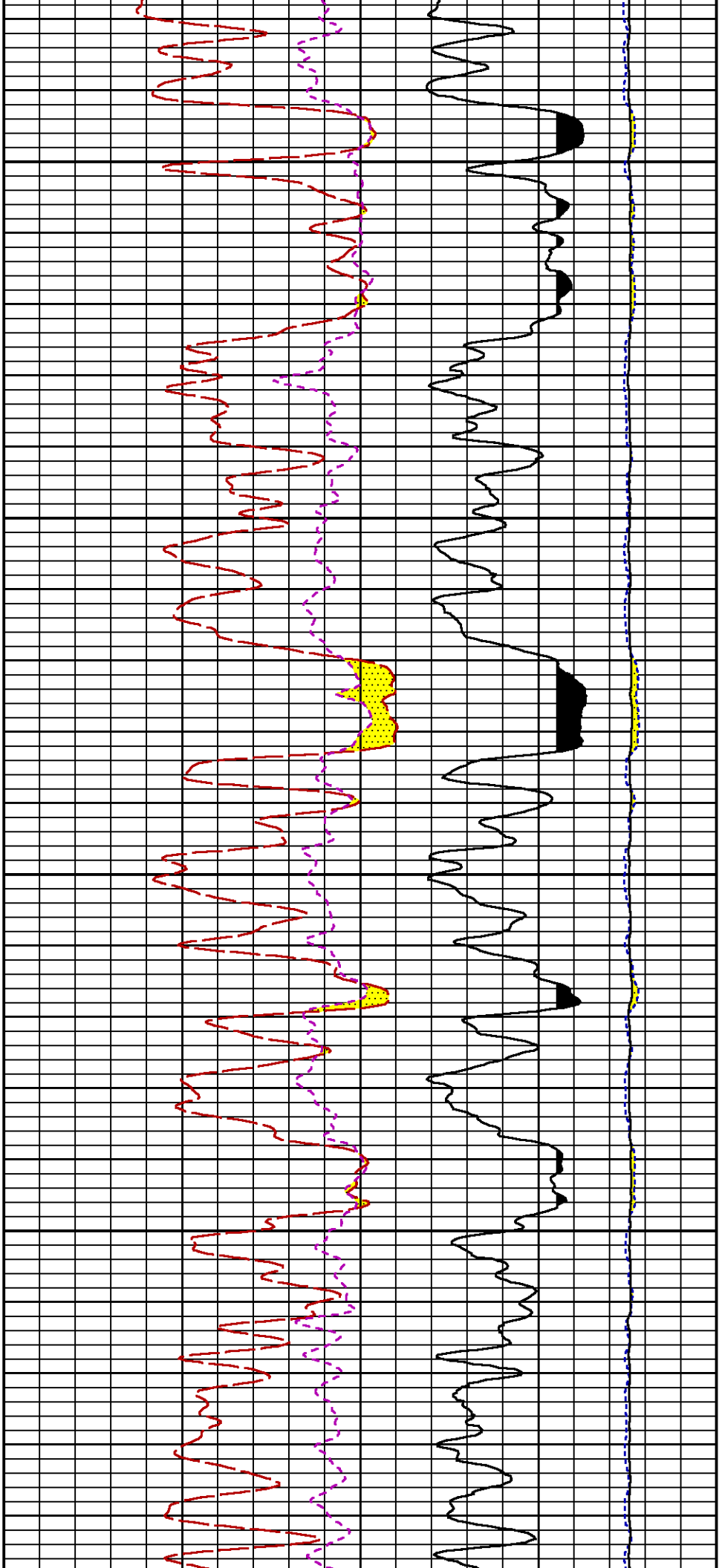


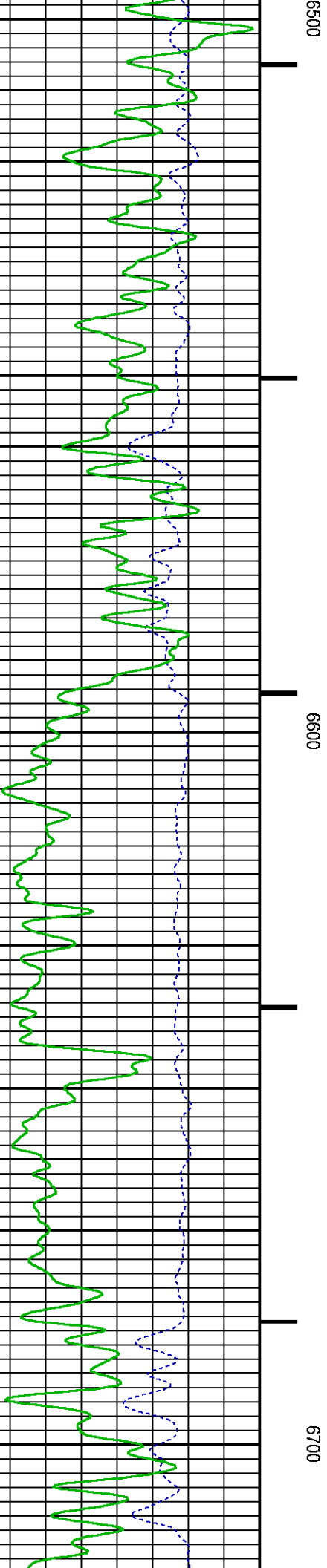
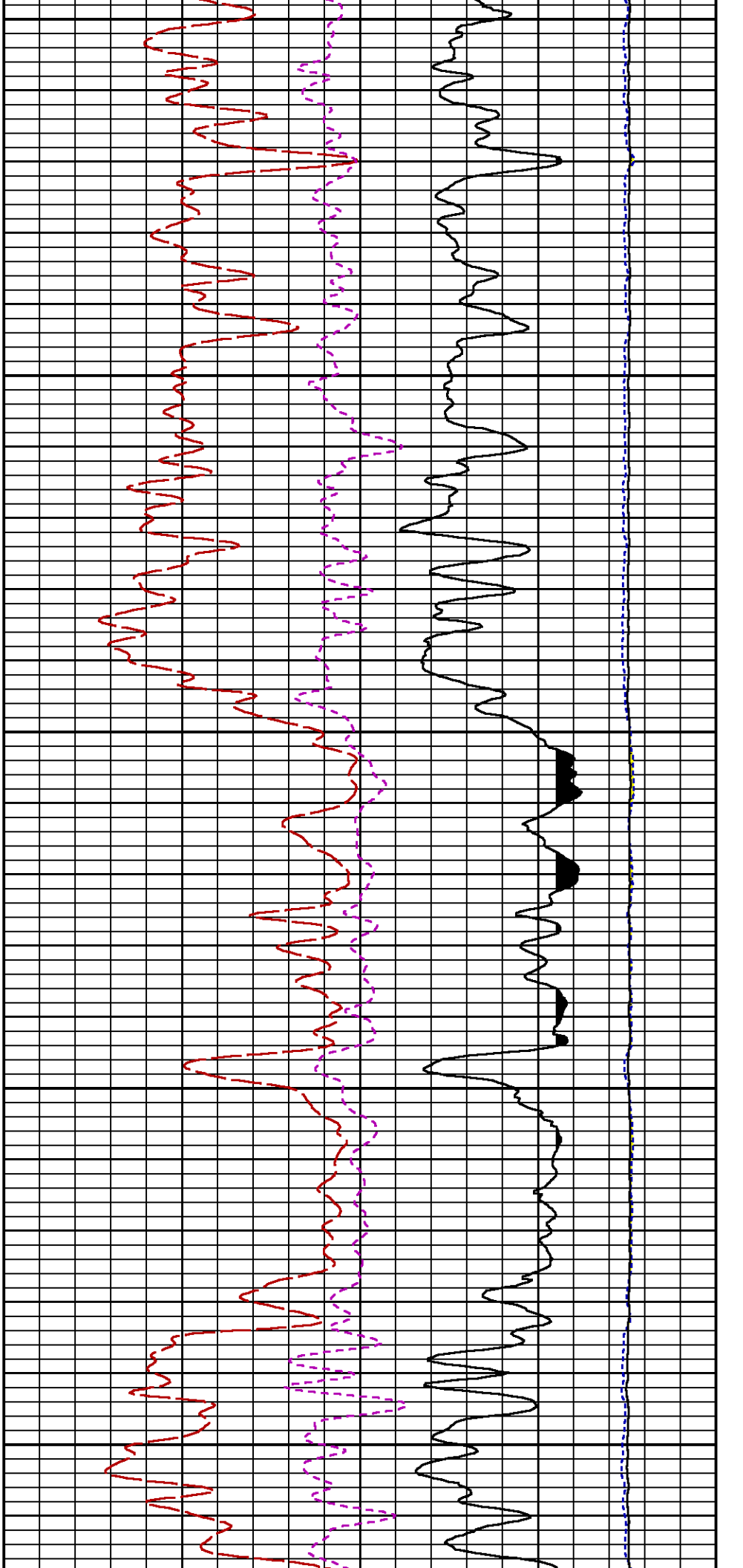


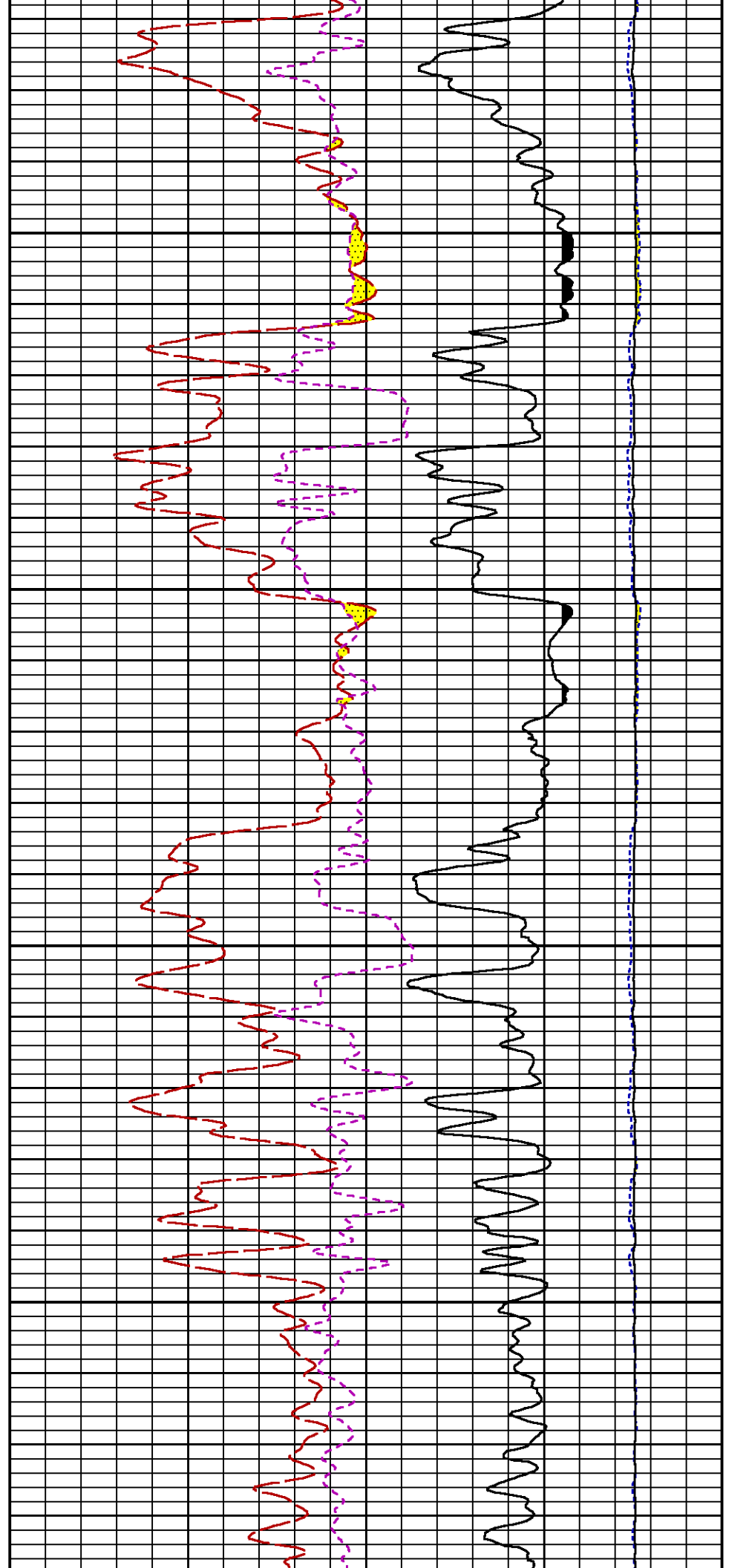
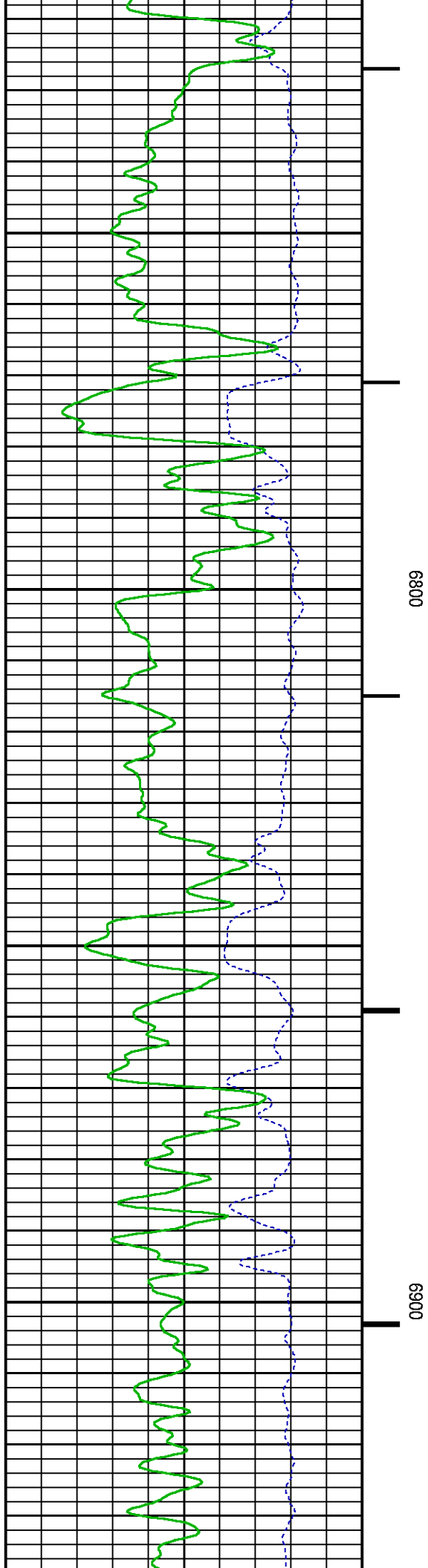
6100

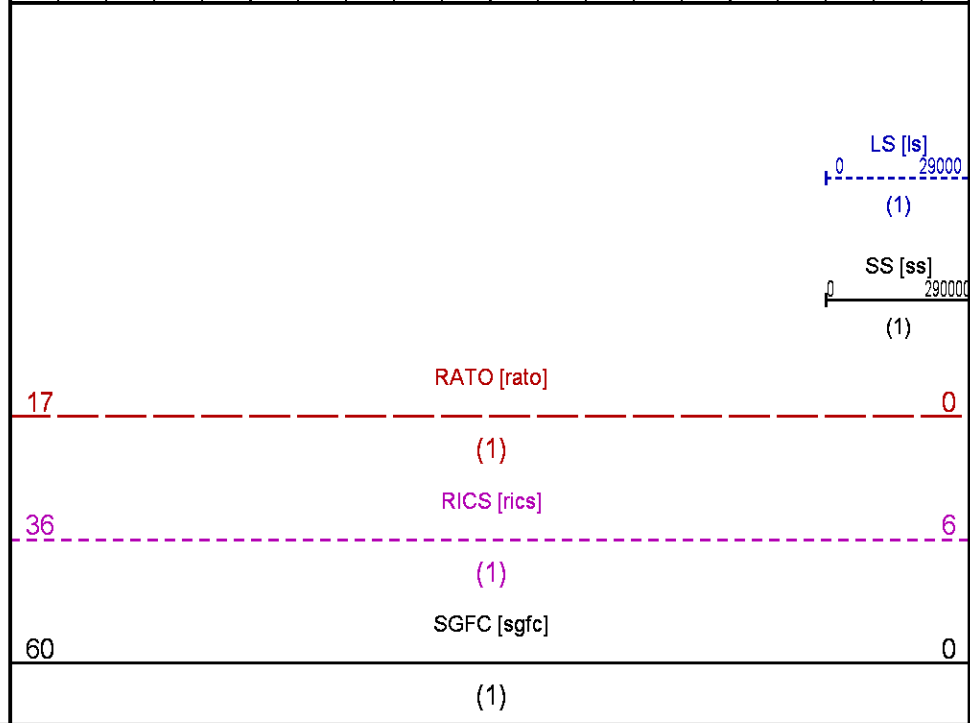
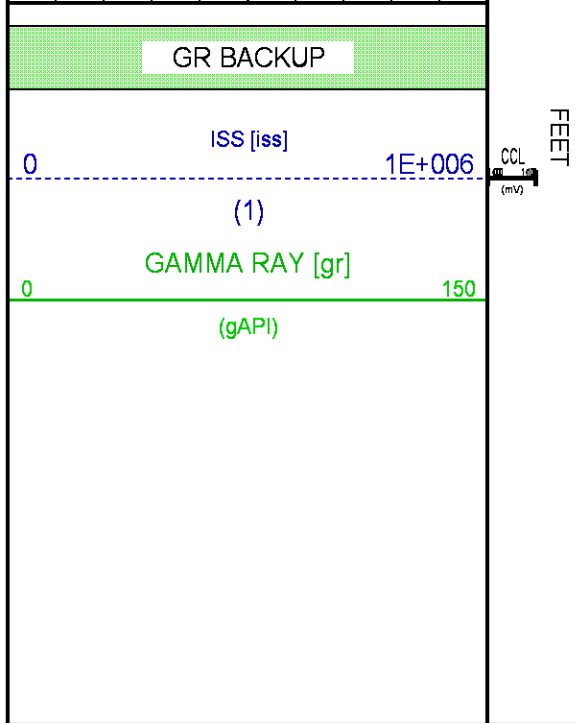
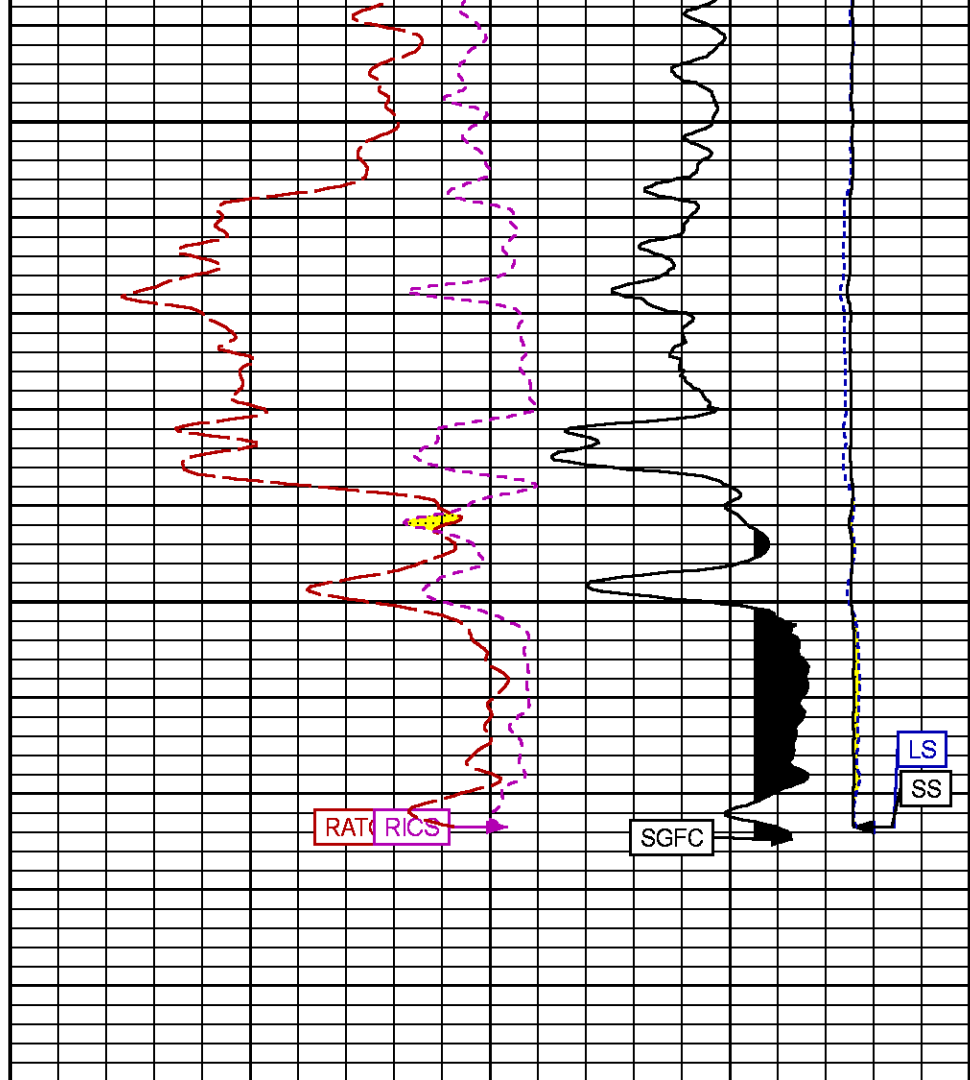
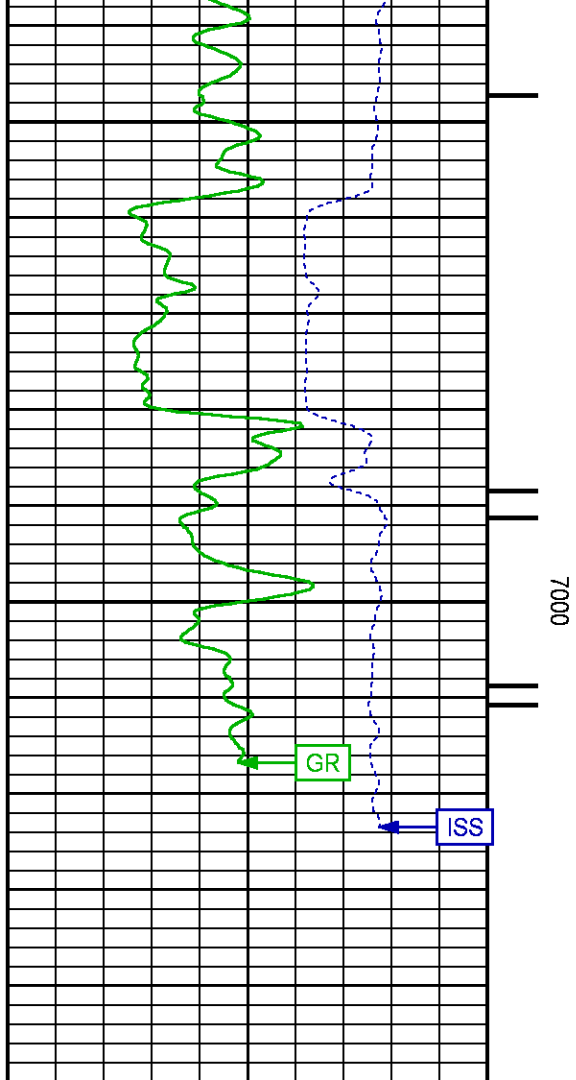
6200











REPEAT SECTION PNC-3D MODE

Plotted: Thu Jan 01 14:40:48 2015

PARAMETER AND FILTER SUMMARY REPORT

FILE: C:\dat1a\093576\333\01.prm
LOGGING MODE: DEPTH DIRECTION: UP
TOP DEPTH: 6133.500 ft BOTTOM DEPTH: 6493.000 ft

SYMMETRIC FILTER

MEASUREMENT TYPE	PARAMETER	VALUE	UNITS	INTERVAL (ft)
GR	FILTER ()	medium (1)		TOP BOTTOM

RPM PROCESSING

MEASUREMENT TYPE	PARAMETER	VALUE	UNITS	INTERVAL (ft)
PNC Parameters	BOREHOLE CONTENTS	FLUID		TOP BOTTOM
	OPEN/CASED HOLE	CASED HOLE		" "
	BOREHOLE SIZE	8.50	in	" "
	CASING SIZE	4.50	in	" "
	MATRIX	SANDSTONE		" "
	CORRECTION BUFFER	11		" "

CURVE DESCRIPTION REPORT

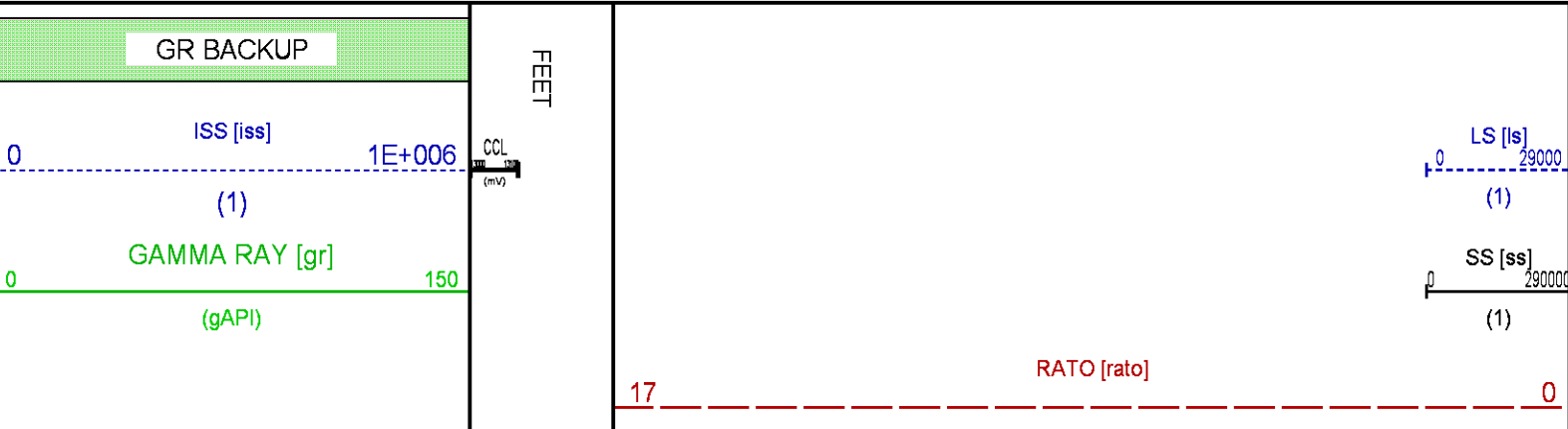
CURVE NAME	CREATION DATE	CURVE DESCRIPTION
F1:CCL	Jan 1 14:05:05 2015	CASING COLLAR LOCATOR
F1:GR	Jan 1 14:05:05 2015	GAMMA RAY
F1:ISS	Jan 1 14:05:05 2015	INELASTIC SHORT SPACE COUNT RATE
F1:LS	Jan 1 14:05:05 2015	LONG SPACE COUNT RATE
F1:RATO	Jan 1 14:05:05 2015	SHORT/LONG SPACE COUNT RATE RATIO
F1:RICS	Jan 1 14:05:05 2015	SHORT SPACE INELASTIC TO CAPTURE COUNT RATE RATIO (ISS/CSS)
F1:SGFC	Jan 1 14:05:05 2015	CORRECTED FORMATION SIGMA
F1:SS	Jan 1 14:05:05 2015	SHORT SPACE COUNT RATE

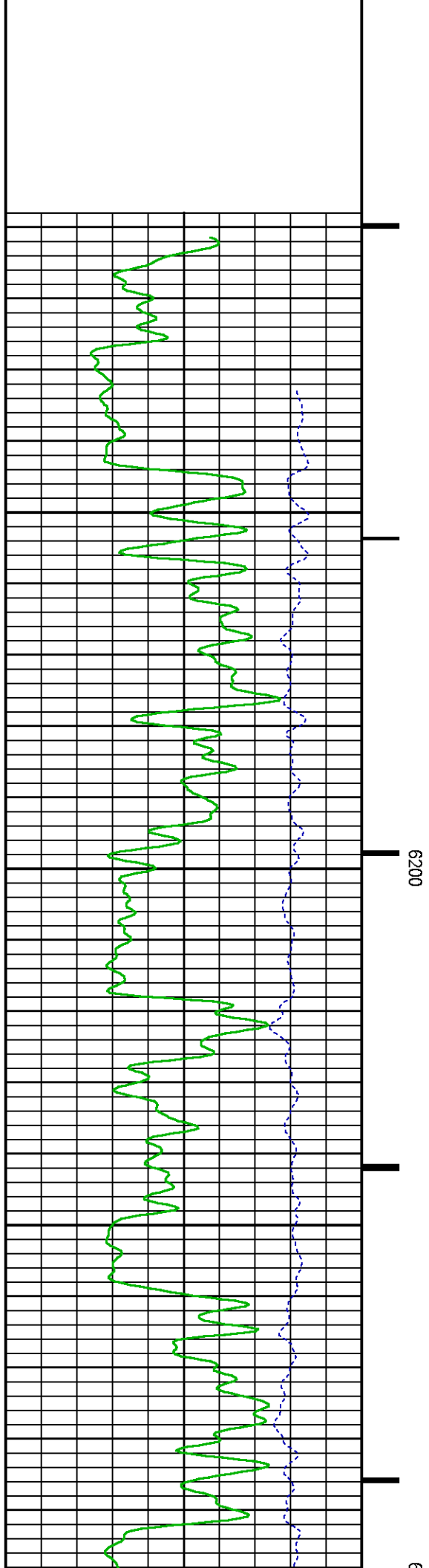
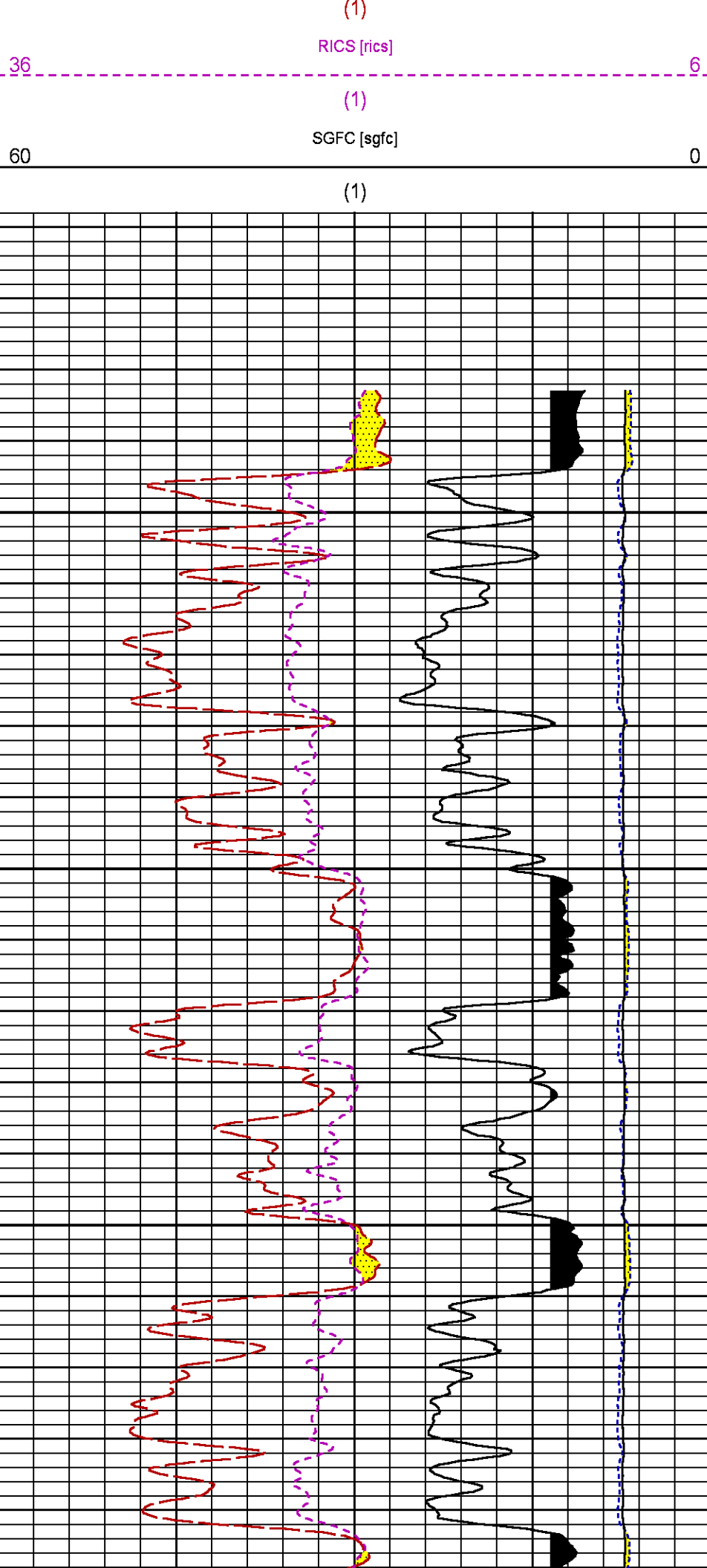
CURVE MEASURE POINT OFFSET

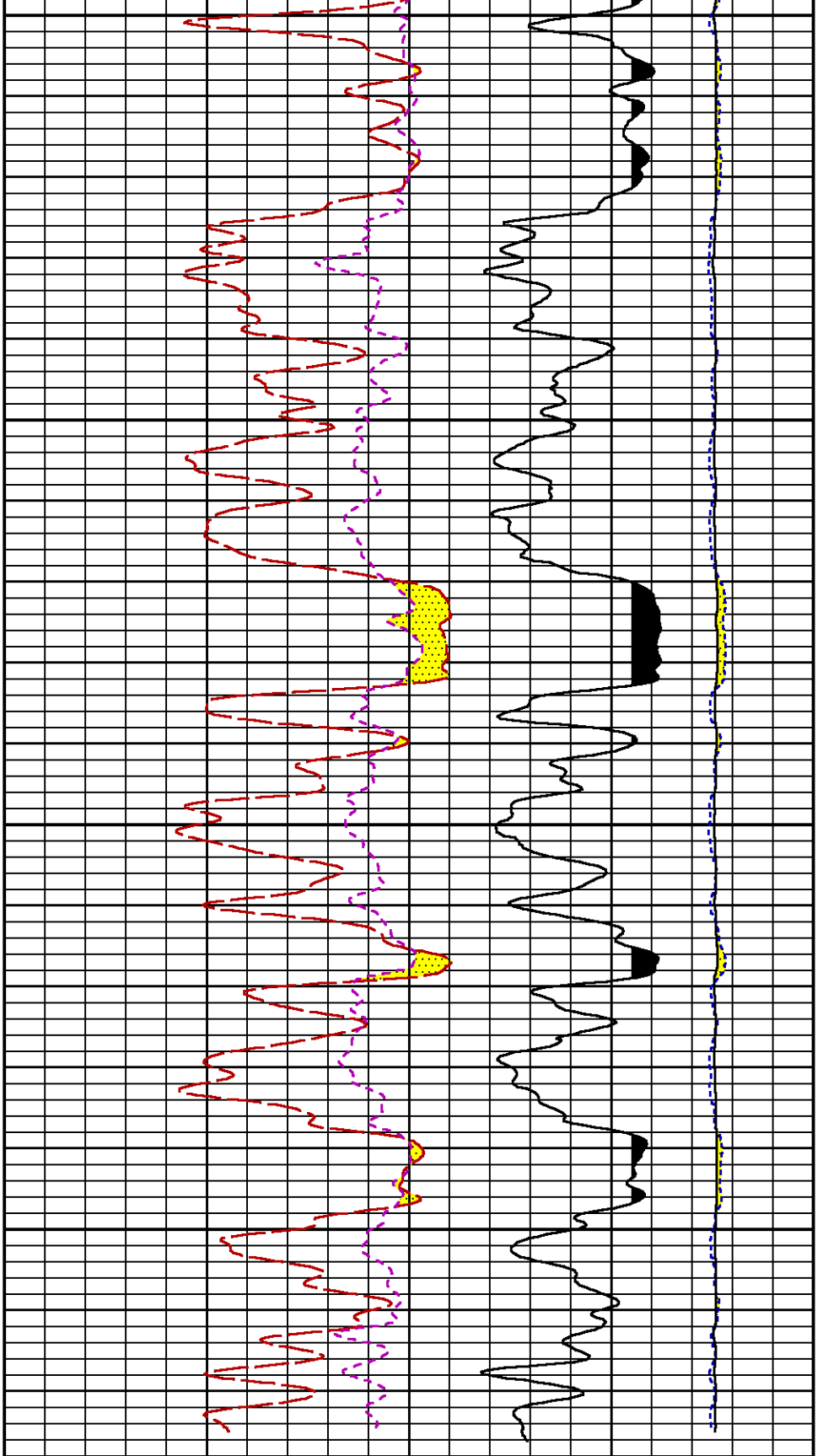
CURVE	OFFSET (ft)	CURVE	OFFSET (ft)	CURVE	OFFSET (ft)	CURVE	OFFSET (ft)
CCL	25.00	ISS	12.75	RATO	12.75	SGFC	12.75
GR	22.75	LS	12.75	RICS	12.75	SS	12.75

Presentation : BHUGHES-06627:C:\dat1a\093576\333_RPM_REPEAT.fvpdf [5"/100" Scale]
Plot Interval : 6108 - 6476.25 Feet

Data File 1 : F1 : BHUGHES-06627:C:\dat1a\093576\333_RPM_REPEAT.xtf
Created On : Jan 1 14:05:05 2015
Company : WPX ENERGY
Well : WPX GM 333-28
Field : GRAND VALLEY
File Interval : 6107.25 - 6491 Feet
OCT : n354h



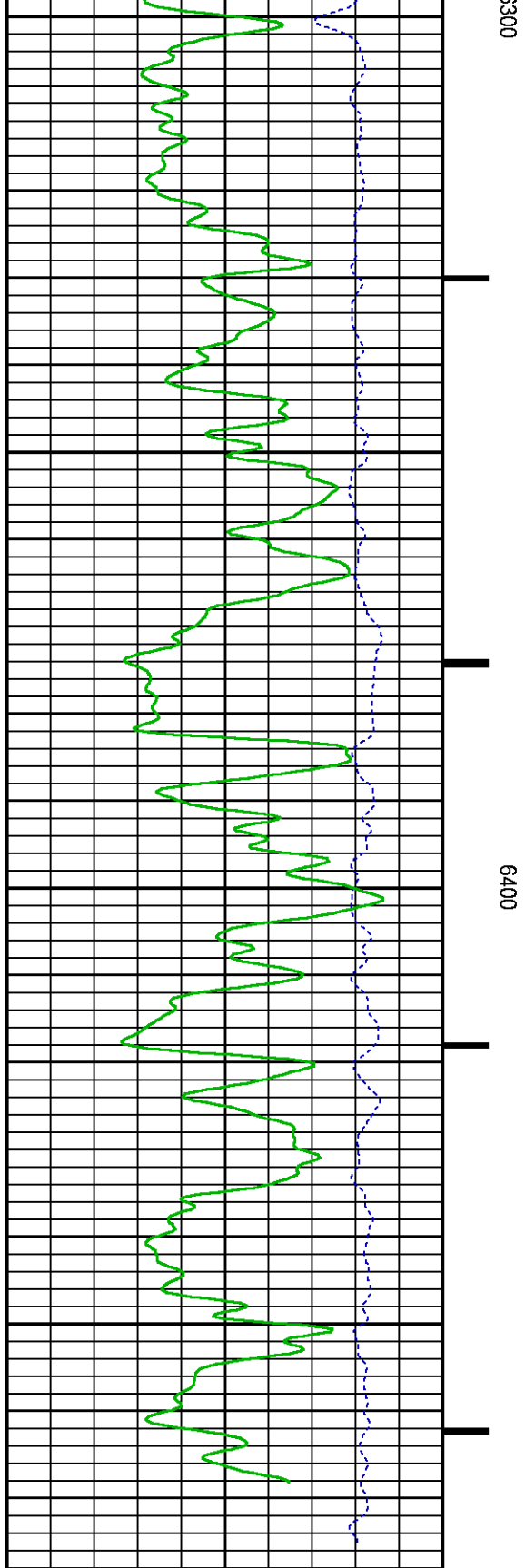




LS [ls]
0 29000
(1)

SS [ss]
0 29000
(1)

RATO [rato]



GR BACKUP

ISS [iss]
0 1E+006
(1)

GAMMA RAY [gr]
0 150
(gAPI)

FEET

CCL (mV)

		17		0
		(1)		
		RICS [rics]		
		36		6
		(1)		
		SGFC [sgfc]		
		60		0
		(1)		

CALIBRATION / VERIFICATION SUMMARY

Source File: C:\dat1a\093576\354h.tp1

GR PRIMARY CALIBRATION SUMMARY

TOOL #: 2812LA 10274382

DATE/TIME PERFORMED: Tue Dec 09 14:04:49 2014

UNIT #: 3885TD Z004271

CALB JIG #: 4702NK WA-612

	BACKGROUND (cts/s)	CALBRTR ON (cts/s)	CR DIFF (cts/s)	MULT	BACKGROUND (gAPI)	CALBRTR ON (gAPI)	CALBRTR (gAPI)
GR	61.18	268.02	206.8	1.015	62.11	272.11	210

GR PRIMARY VERIFICATION SUMMARY

TOOL #: 2812LA 10274382

DATE/TIME PERFORMED: Tue Dec 09 14:07:05 2014

UNIT #: 3885TD Z004271

VERI JIG #: 4702NK WA-612

	BACKGROUND (cts/s)	CALBRTR ON (cts/s)	MULT	BACKGROUND (gAPI)	CALBRTR ON (gAPI)	DIFF. (gAPI)
GR	63.11	273.93	1.015	64.07	278.11	214.04
						200.00 220.00

RPM_PNC_3D PRIMARY CALIBRATION SUMMARY

TOOL: 8283PA 10585555

DATE/TIME PERFORMED: Tue Dec 09 13:08:21 2014

UNIT: 3885TD Z004271

CALIBRATOR: 2437XB 112674

SOURCE: 8281AA 11765054

HOURS: 8281AA 670

ISS	Mtr Vlt	SS Gain	LS Gain	XLS Gain	EA Temp	Sync Delay	RCAL
	(V)				(degF)	(usec)	

Raw Data	801712	124	2342	2286	2235	111	7	0.9721
Interpolated	1300000	147	2317	2281	2228			
	ISS	BKS	BKL	BKX	SGA1	SDA1	SGA2	SDA2
Raw Data	801712	6404	989	140	26.08	0.15	24.23	0.33
					25.35 26.40	0.00 0.20	23.60 24.80	0.00 0.40
	ISS	ILS	IXS	SS	SS2	LS	CSS	CLS
Raw Data	801712	170477	26574	89502	31836	8242	54189	13205
Fit Quality %		0.952	0.776	0.752	0.741	1.017	0.683	0.990
	ISS	RBOR	RIN	RIN13	RICS	RATO	RTWO	RONE
			ISS/ILS	ISS/IXS	ISS/CSS	SS/LS	SS2/LS	CSS/CLS
Raw Data	801712	1.43	4.70	30.18	14.80	10.86	3.86	4.10
		1.42 1.45	3.55 5.52	22.20 32.70	10.99 16.34	10.06 11.10	3.57 3.95	3.76 4.22
Fit Quality %		0.051	0.164	0.223	0.184	0.174	0.189	0.168
Reduced	1392560	1.43	4.71	30.20	14.80	10.88	3.87	4.11
		1.42 1.45	4.33 5.52	27.60 32.70	13.70 16.34	10.06 11.10	3.57 3.95	3.76 4.22

INSTRUMENT CONFIGURATION

Source File: C:\dat1a\093576\VRPM-tdg.meta

A3 CABLEHEAD
Diameter : 1.37"

PCM POWER SUPPLY
Diameter : 1.70"
Length : 3.86'
Weight : 18 lbs
Series : 8250EA
Mnemonic : PCM

TELEMETRY / CCL
Diameter : 1.70"
Length : 4.46'
Weight : 20 lbs
Series : 8248ED
Mnemonic : PCM
Measure Point: 1.00': CCL MP

33.24'

CCL MP 25.19'

SONDEX GAMMA RAY

Diameter : 1.69"
Length : 2.17'
Weight : 11 lbs
Series : 2812LA
Mnemonic : GR
Measure Point: 0.63': GR MP

GR MP — 22.64'

RPM ELECTRONICS

Diameter : 1.70"
Length : 4.48'
Weight : 16 lbs
Series : 8281EA
Mnemonic : RPM

RPM C DETECTOR SECTION

Diameter : 1.70"
Length : 9.40'
Weight : 41 lbs
Series : 8283PA
Mnemonic : RPM
Measure Point: 5.45': XLS DETECTOR
Measure Point: 5.04': LS DETECTOR
Measure Point: 4.79': SS DETECTOR

XLS DETECTOR — 13.58'
LS DETECTOR — 13.16'
SS DETECTOR — 12.91'

RPM SOURCE SECTION

Diameter : 1.70"
Length : 4.70'
Weight : 18 lbs
Series : 8281FA
Mnemonic : RPM

TEMPERATURE / PRESSURE


Diameter : 1.70"
Length : 3.30'
Weight : 13 lbs
Series : 8255XA
Mnemonic : SRPL
Measure Point: 1.52': TEMP MP

TEMP MP — 1.65'
PRES MP —

BULL PLUG 1 11/16

0.00'

TOTAL LENGTH: 33.24'
TOTAL WEIGHT: 140 lbs
MAX DIAMETER: 0'1.70"

	COMPANY <u>WPX ENERGY</u>		FILE NO: <u>CH093576</u>
	WELL <u>WPX GM 333-28</u>		API NO: <u>05045225000000</u>
	FIELD <u>GRAND VALLEY</u>		
	COUNTY <u>GARFIELD</u>	STATE <u>COLORADO</u>	
LOCATION: SHL: 1506' FSL & 2358' FWL BHL: 2329' FSL & 1526' FEL (NWSE)		ELEVATIONS: KB 5500 FT DF GL 5476 FT	28 6S 96W GM 323-28 PAD H&P 318
SEC <u>28</u> TWP <u>6S</u> RGE <u>96W</u>		DATE <u>1-Jan-2015</u>	

