

# **BILL BARRETT CORP**

**WELD COUNTY, COLORADO**

**Will 6-62-15 NENW**

**Will 6-62-15-0362AH2**

**Wellbore #1**

**Plan: Design #1**

## **Standard Planning Report**

**12 March, 2015**



**Bill Barrett Corporation**

## COMPANY DETAILS: BILL BARRETT CORP

Calculation Method: Minimum Curvature  
Error System: ISCWSA  
Scan Method: Closest Approach 3D  
Error Surface: Elliptical Conic  
Warning Method: Error Ratio

## REFERENCE INFORMATION

Co-ordinate (N/E) Reference: Well Will 6-62-15-0362AH2, True North  
Vertical (TVD) Reference: WELL @ 4766.0ft (Original Well Elev)  
Section (VS) Reference: Slot - (0.0N, 0.0E)  
Measured Depth Reference: WELL @ 4766.0ft (Original Well Elev)  
Calculation Method: Minimum Curvature

## WELL DETAILS: Will 6-62-15-0362AH2

+N/-S	+E/-W	Northing	Easting	Latitude	Longitude
0.0	0.0	1424895.73	3331015.21	40° 29' 37.111 N	104° 18' 35.280 W

## SECTION DETAILS

Sec	MD	Inc	Azi	TVD	+N/-S	+E/-W	DLeg	TFace	VSec	Target
1	0.0	0.00	0.00	0.0	0.0	0.0	0.00	0.00	0.0	
2	800.0	0.00	0.00	800.0	0.0	0.0	0.00	0.00	0.0	
3	1065.3	5.31	310.84	1065.0	8.0	-9.3	2.00	310.84	-7.7	
4	5404.6	5.31	310.84	5385.6	270.5	-312.9	0.00	0.00	-258.9	
5	5669.9	0.00	180.19	5650.5	278.5	-322.2	2.00	180.00	-266.6	
6	5919.9	0.00	180.19	5900.5	278.5	-322.2	0.00	180.19	-266.6	
7	6672.4	90.30	180.19	6378.0	-201.5	-323.7	12.00	180.19	213.1	Will 6-6215-0362AH2_LP
8	16193.0	90.30	180.19	6328.0	-9721.8	-354.8	0.00	0.00	9728.3	Will 6-6215-0362AH2_PBHL

## PROJECT DETAILS: WELD COUNTY, COLORADO

Geodetic System: US State Plane 1983  
Datum: North American Datum 1983  
Ellipsoid: GRS 1980  
Zone: Colorado Northern Zone

## FORMATION TOP DETAILS

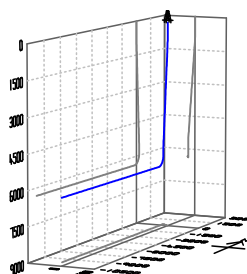
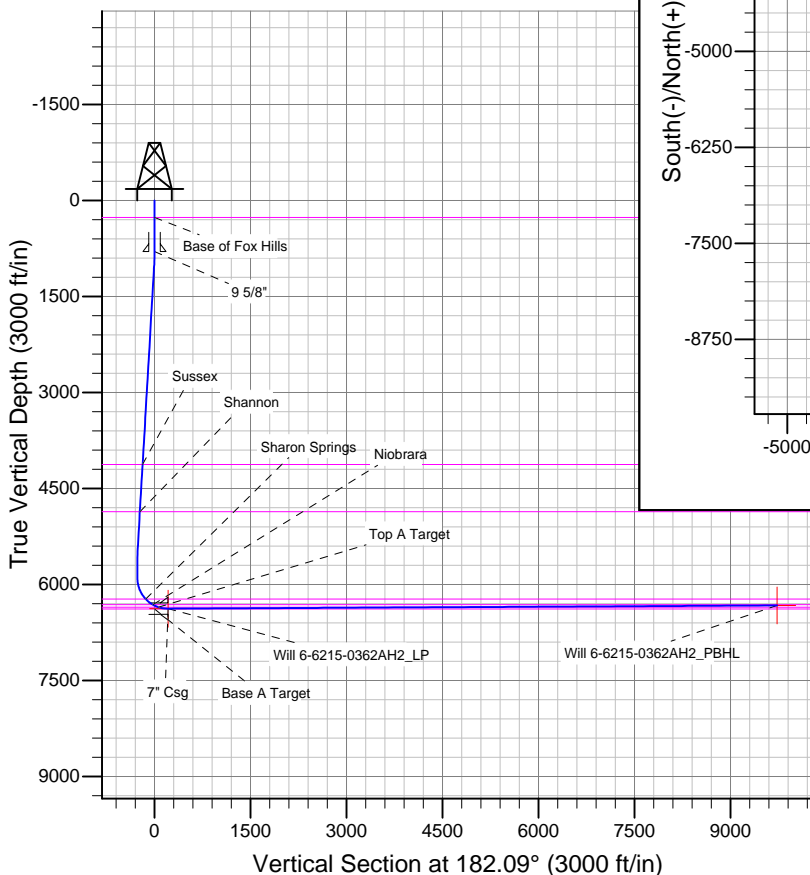
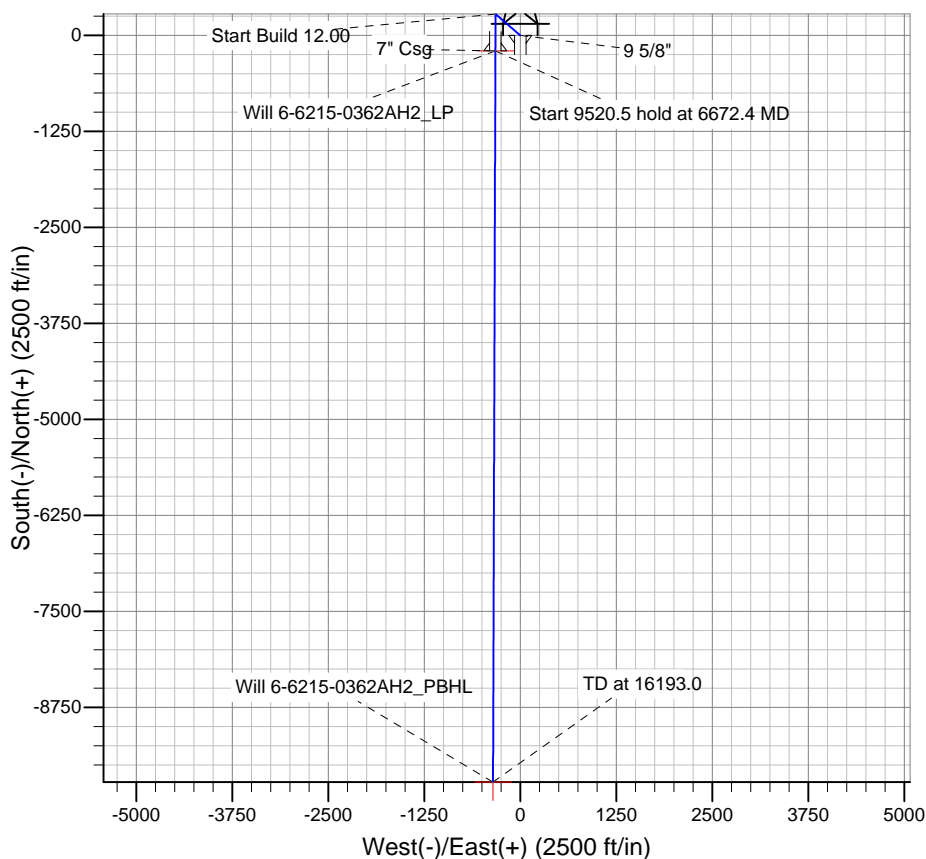
TVDPath	MDPath	Formation
266.0	266.0	Base A Target
4127.0	4140.6	Base of Fox Hills
4863.0	4879.7	Sussex
6228.0	6280.7	Shannon
6316.0	6423.9	Sharon Springs
6354.0	6517.8	Niobrara
		Top A Target

## WELLBORE TARGET DETAILS

Name	TVD	+N/-S	+E/-W	Shape
Will 6-6215-0362AH2_PBHL	6328.0	-9721.8	-354.8	Point
Will 6-6215-0362AH2_LP	6378.0	-201.5	-323.7	Point

## CASING DETAILS

TVD	MD	Name	Size
800.0	800.0	9 5/8"	9-5/8
6378.0	6672.4	7" Csg	7



Azimuths to True North  
Magnetic North: 8.15°  
Magnetic Field  
Strength: 52853.8snT  
Dip Angle: 67.07°  
Date: 12/31/2014  
Model: IGRF2010

**Bill Barrett Corp**  
Planning Report

<b>Database:</b>	Compass	<b>Local Co-ordinate Reference:</b>	Well Will 6-62-15-0362AH2
<b>Company:</b>	BILL BARRETT CORP	<b>TVD Reference:</b>	WELL @ 4766.0ft (Original Well Elev)
<b>Project:</b>	WELD COUNTY, COLORADO	<b>MD Reference:</b>	WELL @ 4766.0ft (Original Well Elev)
<b>Site:</b>	Will 6-62-15 NENW	<b>North Reference:</b>	True
<b>Well:</b>	Will 6-62-15-0362AH2	<b>Survey Calculation Method:</b>	Minimum Curvature
<b>Wellbore:</b>	Wellbore #1		
<b>Design:</b>	Design #1		

<b>Project</b>	WELD COUNTY, COLORADO		
<b>Map System:</b>	US State Plane 1983	<b>System Datum:</b>	Mean Sea Level
<b>Geo Datum:</b>	North American Datum 1983		
<b>Map Zone:</b>	Colorado Northern Zone		

Site		Will 6-62-15 NENW				
Site Position:		Northing:	1,424,895.52 ft	Latitude:	40° 29' 37.111 N	
From:	Lat/Long	Easting:	3,330,999.60 ft	Longitude:	104° 18' 35.482 W	
Position Uncertainty:		0.0 ft	Slot Radius:	"	Grid Convergence:	0.77 °

Well		Will 6-62-15-0362AH2				
Well Position	+N-S	0.0 ft	Northing:	1,424,895.73 ft	Latitude:	40° 29' 37.111 N
	+E-W	15.6 ft	Easting:	3,331,015.21 ft	Longitude:	104° 18' 35.280 W
Position Uncertainty		0.0 ft	Wellhead Elevation:	ft	Ground Level:	4,750.0ft

<b>Wellbore</b>	Wellbore #1				
-----------------	-------------	--	--	--	--

Magnetics	Model Name	Sample Date	Declination (°)	Dip Angle (°)	Field Strength (nT)
	IGRF2010	12/31/2014	8.15	67.07	52,854

<b>Design</b>	Design #1				
---------------	-----------	--	--	--	--

<b>Audit Notes:</b>					
<b>Version:</b>	<b>Phase:</b>	PLAN	<b>Tie On Depth:</b>	0.0	
<b>Vertical Section:</b>	<b>Depth From (TVD)</b>	<b>+N/-S</b>	<b>+E/-W</b>	<b>Direction</b>	
	(ft)	(ft)	(ft)	(°)	
	0.0	0.0	0.0	182.09	

Plan Sections										
Measured Depth (ft)	Inclination (°)	Azimuth (°)	Vertical Depth (ft)	+N/-S (ft)	+E/-W (ft)	Dogleg Rate (°/100ft)	Build Rate (°/100ft)	Turn Rate (°/100ft)	TFO (°)	Target
0.0	0.00	0.00	0.0	0.0	0.0	0.00	0.00	0.00	0.00	
800.0	0.00	0.00	800.0	0.0	0.0	0.00	0.00	0.00	0.00	
1,065.3	5.31	310.84	1,065.0	8.0	-9.3	2.00	2.00	0.00	310.84	
5,404.6	5.31	310.84	5,385.6	270.5	-312.9	0.00	0.00	0.00	0.00	
5,669.9	0.00	180.19	5,650.5	278.5	-322.2	2.00	-2.00	0.00	180.00	
5,919.9	0.00	180.19	5,900.5	278.5	-322.2	0.00	0.00	0.00	180.19	
6,672.4	90.30	180.19	6,378.0	-201.5	-323.7	12.00	12.00	0.00	180.19	Will 6-6215-0362AH
16,193.0	90.30	180.19	6,328.0	-9,721.8	-354.8	0.00	0.00	0.00	0.00	Will 6-6215-0362AH

**Bill Barrett Corp**  
Planning Report

<b>Database:</b>	Compass	<b>Local Co-ordinate Reference:</b>	Well Will 6-62-15-0362AH2
<b>Company:</b>	BILL BARRETT CORP	<b>TVD Reference:</b>	WELL @ 4766.0ft (Original Well Elev)
<b>Project:</b>	WELD COUNTY, COLORADO	<b>MD Reference:</b>	WELL @ 4766.0ft (Original Well Elev)
<b>Site:</b>	Will 6-62-15 NENW	<b>North Reference:</b>	True
<b>Well:</b>	Will 6-62-15-0362AH2	<b>Survey Calculation Method:</b>	Minimum Curvature
<b>Wellbore:</b>	Wellbore #1		
<b>Design:</b>	Design #1		

Planned Survey									
Measured Depth (ft)	Inclination (°)	Azimuth (°)	Vertical Depth (ft)	+N/-S (ft)	+E/-W (ft)	Vertical Section (ft)	Dogleg Rate (°/100ft)	Build Rate (°/100ft)	Turn Rate (°/100ft)
0.0	0.00	0.00	0.0	0.0	0.0	0.0	0.00	0.00	0.00
100.0	0.00	0.00	100.0	0.0	0.0	0.0	0.00	0.00	0.00
200.0	0.00	0.00	200.0	0.0	0.0	0.0	0.00	0.00	0.00
266.0	0.00	0.00	266.0	0.0	0.0	0.0	0.00	0.00	0.00
<b>Base of Fox Hills</b>									
300.0	0.00	0.00	300.0	0.0	0.0	0.0	0.00	0.00	0.00
400.0	0.00	0.00	400.0	0.0	0.0	0.0	0.00	0.00	0.00
500.0	0.00	0.00	500.0	0.0	0.0	0.0	0.00	0.00	0.00
600.0	0.00	0.00	600.0	0.0	0.0	0.0	0.00	0.00	0.00
700.0	0.00	0.00	700.0	0.0	0.0	0.0	0.00	0.00	0.00
800.0	0.00	0.00	800.0	0.0	0.0	0.0	0.00	0.00	0.00
<b>9 5/8"</b>									
900.0	2.00	310.84	900.0	1.1	-1.3	-1.1	2.00	2.00	0.00
1,000.0	4.00	310.84	999.8	4.6	-5.3	-4.4	2.00	2.00	0.00
1,065.3	5.31	310.84	1,065.0	8.0	-9.3	-7.7	2.00	2.00	0.00
1,100.0	5.31	310.84	1,099.5	10.1	-11.7	-9.7	0.00	0.00	0.00
1,200.0	5.31	310.84	1,199.0	16.2	-18.7	-15.5	0.00	0.00	0.00
1,300.0	5.31	310.84	1,298.6	22.2	-25.7	-21.3	0.00	0.00	0.00
1,400.0	5.31	310.84	1,398.2	28.3	-32.7	-27.1	0.00	0.00	0.00
1,500.0	5.31	310.84	1,497.8	34.3	-39.7	-32.9	0.00	0.00	0.00
1,600.0	5.31	310.84	1,597.3	40.4	-46.7	-38.6	0.00	0.00	0.00
1,700.0	5.31	310.84	1,696.9	46.4	-53.7	-44.4	0.00	0.00	0.00
1,800.0	5.31	310.84	1,796.5	52.5	-60.7	-50.2	0.00	0.00	0.00
1,900.0	5.31	310.84	1,896.0	58.5	-67.7	-56.0	0.00	0.00	0.00
2,000.0	5.31	310.84	1,995.6	64.6	-74.7	-61.8	0.00	0.00	0.00
2,100.0	5.31	310.84	2,095.2	70.6	-81.7	-67.6	0.00	0.00	0.00
2,200.0	5.31	310.84	2,194.8	76.7	-88.7	-73.4	0.00	0.00	0.00
2,300.0	5.31	310.84	2,294.3	82.7	-95.7	-79.2	0.00	0.00	0.00
2,400.0	5.31	310.84	2,393.9	88.8	-102.7	-85.0	0.00	0.00	0.00
2,500.0	5.31	310.84	2,493.5	94.8	-109.7	-90.7	0.00	0.00	0.00
2,600.0	5.31	310.84	2,593.0	100.9	-116.7	-96.5	0.00	0.00	0.00
2,700.0	5.31	310.84	2,692.6	106.9	-123.7	-102.3	0.00	0.00	0.00
2,800.0	5.31	310.84	2,792.2	113.0	-130.7	-108.1	0.00	0.00	0.00
2,900.0	5.31	310.84	2,891.8	119.0	-137.7	-113.9	0.00	0.00	0.00
3,000.0	5.31	310.84	2,991.3	125.0	-144.7	-119.7	0.00	0.00	0.00
3,100.0	5.31	310.84	3,090.9	131.1	-151.6	-125.5	0.00	0.00	0.00
3,200.0	5.31	310.84	3,190.5	137.1	-158.6	-131.3	0.00	0.00	0.00
3,300.0	5.31	310.84	3,290.0	143.2	-165.6	-137.1	0.00	0.00	0.00
3,400.0	5.31	310.84	3,389.6	149.2	-172.6	-142.8	0.00	0.00	0.00
3,500.0	5.31	310.84	3,489.2	155.3	-179.6	-148.6	0.00	0.00	0.00
3,600.0	5.31	310.84	3,588.8	161.3	-186.6	-154.4	0.00	0.00	0.00
3,700.0	5.31	310.84	3,688.3	167.4	-193.6	-160.2	0.00	0.00	0.00
3,800.0	5.31	310.84	3,787.9	173.4	-200.6	-166.0	0.00	0.00	0.00
3,900.0	5.31	310.84	3,887.5	179.5	-207.6	-171.8	0.00	0.00	0.00
4,000.0	5.31	310.84	3,987.0	185.5	-214.6	-177.6	0.00	0.00	0.00
4,100.0	5.31	310.84	4,086.6	191.6	-221.6	-183.4	0.00	0.00	0.00
4,140.6	5.31	310.84	4,127.0	194.0	-224.5	-185.7	0.00	0.00	0.00
<b>Sussex</b>									
4,200.0	5.31	310.84	4,186.2	197.6	-228.6	-189.2	0.00	0.00	0.00
4,300.0	5.31	310.84	4,285.8	203.7	-235.6	-195.0	0.00	0.00	0.00
4,400.0	5.31	310.84	4,385.3	209.7	-242.6	-200.7	0.00	0.00	0.00
4,500.0	5.31	310.84	4,484.9	215.8	-249.6	-206.5	0.00	0.00	0.00
4,600.0	5.31	310.84	4,584.5	221.8	-256.6	-212.3	0.00	0.00	0.00

**Bill Barrett Corp**  
Planning Report

<b>Database:</b>	Compass	<b>Local Co-ordinate Reference:</b>	Well Will 6-62-15-0362AH2
<b>Company:</b>	BILL BARRETT CORP	<b>TVD Reference:</b>	WELL @ 4766.0ft (Original Well Elev)
<b>Project:</b>	WELD COUNTY, COLORADO	<b>MD Reference:</b>	WELL @ 4766.0ft (Original Well Elev)
<b>Site:</b>	Will 6-62-15 NENW	<b>North Reference:</b>	True
<b>Well:</b>	Will 6-62-15-0362AH2	<b>Survey Calculation Method:</b>	Minimum Curvature
<b>Wellbore:</b>	Wellbore #1		
<b>Design:</b>	Design #1		

Planned Survey									
Measured Depth (ft)	Inclination (°)	Azimuth (°)	Vertical Depth (ft)	+N/-S (ft)	+E/-W (ft)	Vertical Section (ft)	Dogleg Rate (°/100ft)	Build Rate (°/100ft)	Turn Rate (°/100ft)
4,700.0	5.31	310.84	4,684.0	227.9	-263.6	-218.1	0.00	0.00	0.00
4,800.0	5.31	310.84	4,783.6	233.9	-270.6	-223.9	0.00	0.00	0.00
4,879.7	5.31	310.84	4,863.0	238.7	-276.2	-228.5	0.00	0.00	0.00
<b>Shannon</b>									
4,900.0	5.31	310.84	4,883.2	240.0	-277.6	-229.7	0.00	0.00	0.00
5,000.0	5.31	310.84	4,982.8	246.0	-284.6	-235.5	0.00	0.00	0.00
5,100.0	5.31	310.84	5,082.3	252.1	-291.6	-241.3	0.00	0.00	0.00
5,200.0	5.31	310.84	5,181.9	258.1	-298.6	-247.1	0.00	0.00	0.00
5,300.0	5.31	310.84	5,281.5	264.2	-305.6	-252.8	0.00	0.00	0.00
5,400.0	5.31	310.84	5,381.0	270.2	-312.6	-258.6	0.00	0.00	0.00
5,404.6	5.31	310.84	5,385.6	270.5	-312.9	-258.9	0.00	0.00	0.00
5,500.0	3.40	310.84	5,480.7	275.2	-318.4	-263.4	2.00	-2.00	0.00
5,600.0	1.40	310.84	5,580.7	278.0	-321.5	-266.1	2.00	-2.00	0.00
5,669.9	0.00	180.19	5,650.5	278.5	-322.2	-266.6	2.00	-2.00	0.00
5,700.0	0.00	180.19	5,680.6	278.5	-322.2	-266.6	0.00	0.00	0.00
5,800.0	0.00	180.19	5,780.6	278.5	-322.2	-266.6	0.00	0.00	0.00
5,900.0	0.00	180.19	5,880.6	278.5	-322.2	-266.6	0.00	0.00	0.00
5,919.9	0.00	180.19	5,900.5	278.5	-322.2	-266.6	0.00	0.00	0.00
6,000.0	9.61	180.19	5,980.3	271.8	-322.2	-259.9	12.00	12.00	0.00
6,100.0	21.61	180.19	6,076.4	245.0	-322.3	-233.0	12.00	12.00	0.00
6,200.0	33.61	180.19	6,164.9	198.7	-322.4	-186.8	12.00	12.00	0.00
6,280.7	43.30	180.19	6,228.0	148.5	-322.6	-136.7	12.00	12.00	0.00
<b>Sharon Springs</b>									
6,300.0	45.61	180.19	6,241.7	135.0	-322.6	-123.2	12.00	12.00	0.00
6,400.0	57.61	180.19	6,303.7	56.8	-322.9	-45.0	12.00	12.00	0.00
6,423.9	60.47	180.19	6,316.0	36.4	-323.0	-24.6	12.00	12.00	0.00
<b>Niobrara</b>									
6,500.0	69.61	180.19	6,348.1	-32.6	-323.2	44.4	12.00	12.00	0.00
6,517.8	71.75	180.19	6,354.0	-49.5	-323.2	61.2	12.00	12.00	0.00
<b>Top A Target</b>									
6,600.0	81.61	180.19	6,372.9	-129.3	-323.5	141.0	12.00	12.00	0.00
6,672.4	90.30	180.19	6,378.0	-201.4	-323.7	213.1	12.00	12.00	0.00
<b>7" Csg</b>									
6,700.0	90.30	180.19	6,377.9	-229.0	-323.8	240.7	0.00	0.00	0.00
6,800.0	90.30	180.19	6,377.3	-329.0	-324.2	340.6	0.00	0.00	0.00
6,900.0	90.30	180.19	6,376.8	-429.0	-324.5	440.6	0.00	0.00	0.00
7,000.0	90.30	180.19	6,376.3	-529.0	-324.8	540.5	0.00	0.00	0.00
7,100.0	90.30	180.19	6,375.8	-629.0	-325.1	640.5	0.00	0.00	0.00
7,200.0	90.30	180.19	6,375.2	-729.0	-325.5	740.4	0.00	0.00	0.00
7,300.0	90.30	180.19	6,374.7	-829.0	-325.8	840.4	0.00	0.00	0.00
7,400.0	90.30	180.19	6,374.2	-929.0	-326.1	940.3	0.00	0.00	0.00
7,500.0	90.30	180.19	6,373.7	-1,029.0	-326.4	1,040.2	0.00	0.00	0.00
7,600.0	90.30	180.19	6,373.1	-1,129.0	-326.8	1,140.2	0.00	0.00	0.00
7,700.0	90.30	180.19	6,372.6	-1,229.0	-327.1	1,240.1	0.00	0.00	0.00
7,800.0	90.30	180.19	6,372.1	-1,329.0	-327.4	1,340.1	0.00	0.00	0.00
7,900.0	90.30	180.19	6,371.6	-1,429.0	-327.7	1,440.0	0.00	0.00	0.00
8,000.0	90.30	180.19	6,371.0	-1,529.0	-328.1	1,540.0	0.00	0.00	0.00
8,100.0	90.30	180.19	6,370.5	-1,629.0	-328.4	1,639.9	0.00	0.00	0.00
8,200.0	90.30	180.19	6,370.0	-1,729.0	-328.7	1,739.9	0.00	0.00	0.00
8,300.0	90.30	180.19	6,369.5	-1,829.0	-329.0	1,839.8	0.00	0.00	0.00
8,400.0	90.30	180.19	6,368.9	-1,929.0	-329.4	1,939.7	0.00	0.00	0.00
8,500.0	90.30	180.19	6,368.4	-2,029.0	-329.7	2,039.7	0.00	0.00	0.00
8,600.0	90.30	180.19	6,367.9	-2,129.0	-330.0	2,139.6	0.00	0.00	0.00
8,700.0	90.30	180.19	6,367.4	-2,229.0	-330.3	2,239.6	0.00	0.00	0.00

# Bill Barrett Corp

## Planning Report

<b>Database:</b>	Compass	<b>Local Co-ordinate Reference:</b>	Well Will 6-62-15-0362AH2
<b>Company:</b>	BILL BARRETT CORP	<b>TVD Reference:</b>	WELL @ 4766.0ft (Original Well Elev)
<b>Project:</b>	WELD COUNTY, COLORADO	<b>MD Reference:</b>	WELL @ 4766.0ft (Original Well Elev)
<b>Site:</b>	Will 6-62-15 NENW	<b>North Reference:</b>	True
<b>Well:</b>	Will 6-62-15-0362AH2	<b>Survey Calculation Method:</b>	Minimum Curvature
<b>Wellbore:</b>	Wellbore #1		
<b>Design:</b>	Design #1		

Planned Survey									
Measured Depth (ft)	Inclination (°)	Azimuth (°)	Vertical Depth (ft)	+N/-S (ft)	+E/-W (ft)	Vertical Section (ft)	Dogleg Rate (°/100ft)	Build Rate (°/100ft)	Turn Rate (°/100ft)
8,800.0	90.30	180.19	6,366.8	-2,329.0	-330.7	2,339.5	0.00	0.00	0.00
8,900.0	90.30	180.19	6,366.3	-2,429.0	-331.0	2,439.5	0.00	0.00	0.00
9,000.0	90.30	180.19	6,365.8	-2,529.0	-331.3	2,539.4	0.00	0.00	0.00
9,100.0	90.30	180.19	6,365.3	-2,629.0	-331.6	2,639.3	0.00	0.00	0.00
9,200.0	90.30	180.19	6,364.7	-2,729.0	-332.0	2,739.3	0.00	0.00	0.00
9,300.0	90.30	180.19	6,364.2	-2,829.0	-332.3	2,839.2	0.00	0.00	0.00
9,400.0	90.30	180.19	6,363.7	-2,929.0	-332.6	2,939.2	0.00	0.00	0.00
9,500.0	90.30	180.19	6,363.2	-3,029.0	-333.0	3,039.1	0.00	0.00	0.00
9,600.0	90.30	180.19	6,362.6	-3,129.0	-333.3	3,139.1	0.00	0.00	0.00
9,700.0	90.30	180.19	6,362.1	-3,229.0	-333.6	3,239.0	0.00	0.00	0.00
9,800.0	90.30	180.19	6,361.6	-3,329.0	-333.9	3,338.9	0.00	0.00	0.00
9,900.0	90.30	180.19	6,361.0	-3,429.0	-334.3	3,438.9	0.00	0.00	0.00
10,000.0	90.30	180.19	6,360.5	-3,529.0	-334.6	3,538.8	0.00	0.00	0.00
10,100.0	90.30	180.19	6,360.0	-3,629.0	-334.9	3,638.8	0.00	0.00	0.00
10,200.0	90.30	180.19	6,359.5	-3,729.0	-335.2	3,738.7	0.00	0.00	0.00
10,300.0	90.30	180.19	6,358.9	-3,829.0	-335.6	3,838.7	0.00	0.00	0.00
10,400.0	90.30	180.19	6,358.4	-3,929.0	-335.9	3,938.6	0.00	0.00	0.00
10,500.0	90.30	180.19	6,357.9	-4,029.0	-336.2	4,038.6	0.00	0.00	0.00
10,600.0	90.30	180.19	6,357.4	-4,129.0	-336.5	4,138.5	0.00	0.00	0.00
10,700.0	90.30	180.19	6,356.8	-4,229.0	-336.9	4,238.4	0.00	0.00	0.00
10,800.0	90.30	180.19	6,356.3	-4,329.0	-337.2	4,338.4	0.00	0.00	0.00
10,900.0	90.30	180.19	6,355.8	-4,429.0	-337.5	4,438.3	0.00	0.00	0.00
11,000.0	90.30	180.19	6,355.3	-4,529.0	-337.8	4,538.3	0.00	0.00	0.00
11,100.0	90.30	180.19	6,354.7	-4,629.0	-338.2	4,638.2	0.00	0.00	0.00
11,200.0	90.30	180.19	6,354.2	-4,729.0	-338.5	4,738.2	0.00	0.00	0.00
11,300.0	90.30	180.19	6,353.7	-4,829.0	-338.8	4,838.1	0.00	0.00	0.00
11,400.0	90.30	180.19	6,353.2	-4,929.0	-339.1	4,938.0	0.00	0.00	0.00
11,500.0	90.30	180.19	6,352.6	-5,029.0	-339.5	5,038.0	0.00	0.00	0.00
11,600.0	90.30	180.19	6,352.1	-5,129.0	-339.8	5,137.9	0.00	0.00	0.00
11,700.0	90.30	180.19	6,351.6	-5,228.9	-340.1	5,237.9	0.00	0.00	0.00
11,800.0	90.30	180.19	6,351.1	-5,328.9	-340.4	5,337.8	0.00	0.00	0.00
11,900.0	90.30	180.19	6,350.5	-5,428.9	-340.8	5,437.8	0.00	0.00	0.00
12,000.0	90.30	180.19	6,350.0	-5,528.9	-341.1	5,537.7	0.00	0.00	0.00
12,100.0	90.30	180.19	6,349.5	-5,628.9	-341.4	5,637.6	0.00	0.00	0.00
12,200.0	90.30	180.19	6,349.0	-5,728.9	-341.7	5,737.6	0.00	0.00	0.00
12,300.0	90.30	180.19	6,348.4	-5,828.9	-342.1	5,837.5	0.00	0.00	0.00
12,400.0	90.30	180.19	6,347.9	-5,928.9	-342.4	5,937.5	0.00	0.00	0.00
12,500.0	90.30	180.19	6,347.4	-6,028.9	-342.7	6,037.4	0.00	0.00	0.00
12,600.0	90.30	180.19	6,346.9	-6,128.9	-343.0	6,137.4	0.00	0.00	0.00
12,700.0	90.30	180.19	6,346.3	-6,228.9	-343.4	6,237.3	0.00	0.00	0.00
12,800.0	90.30	180.19	6,345.8	-6,328.9	-343.7	6,337.3	0.00	0.00	0.00
12,900.0	90.30	180.19	6,345.3	-6,428.9	-344.0	6,437.2	0.00	0.00	0.00
13,000.0	90.30	180.19	6,344.8	-6,528.9	-344.4	6,537.1	0.00	0.00	0.00
13,100.0	90.30	180.19	6,344.2	-6,628.9	-344.7	6,637.1	0.00	0.00	0.00
13,200.0	90.30	180.19	6,343.7	-6,728.9	-345.0	6,737.0	0.00	0.00	0.00
13,300.0	90.30	180.19	6,343.2	-6,828.9	-345.3	6,837.0	0.00	0.00	0.00
13,400.0	90.30	180.19	6,342.7	-6,928.9	-345.7	6,936.9	0.00	0.00	0.00
13,500.0	90.30	180.19	6,342.1	-7,028.9	-346.0	7,036.9	0.00	0.00	0.00
13,600.0	90.30	180.19	6,341.6	-7,128.9	-346.3	7,136.8	0.00	0.00	0.00
13,700.0	90.30	180.19	6,341.1	-7,228.9	-346.6	7,236.7	0.00	0.00	0.00
13,800.0	90.30	180.19	6,340.6	-7,328.9	-347.0	7,336.7	0.00	0.00	0.00
13,900.0	90.30	180.19	6,340.0	-7,428.9	-347.3	7,436.6	0.00	0.00	0.00
14,000.0	90.30	180.19	6,339.5	-7,528.9	-347.6	7,536.6	0.00	0.00	0.00
14,100.0	90.30	180.19	6,339.0	-7,628.9	-347.9	7,636.5	0.00	0.00	0.00

**Bill Barrett Corp**  
Planning Report

<b>Database:</b>	Compass	<b>Local Co-ordinate Reference:</b>	Well Will 6-62-15-0362AH2
<b>Company:</b>	BILL BARRETT CORP	<b>TVD Reference:</b>	WELL @ 4766.0ft (Original Well Elev)
<b>Project:</b>	WELD COUNTY, COLORADO	<b>MD Reference:</b>	WELL @ 4766.0ft (Original Well Elev)
<b>Site:</b>	Will 6-62-15 NENW	<b>North Reference:</b>	True
<b>Well:</b>	Will 6-62-15-0362AH2	<b>Survey Calculation Method:</b>	Minimum Curvature
<b>Wellbore:</b>	Wellbore #1		
<b>Design:</b>	Design #1		

Planned Survey										
Measured Depth (ft)	Inclination (°)	Azimuth (°)	Vertical Depth (ft)	+N/-S (ft)	+E/-W (ft)	Vertical Section (ft)	Dogleg Rate (°/100ft)	Build Rate (°/100ft)	Turn Rate (°/100ft)	
14,200.0	90.30	180.19	6,338.5	-7,728.9	-348.3	7,736.5	0.00	0.00	0.00	
14,300.0	90.30	180.19	6,337.9	-7,828.9	-348.6	7,836.4	0.00	0.00	0.00	
14,400.0	90.30	180.19	6,337.4	-7,928.9	-348.9	7,936.3	0.00	0.00	0.00	
14,500.0	90.30	180.19	6,336.9	-8,028.9	-349.2	8,036.3	0.00	0.00	0.00	
14,600.0	90.30	180.19	6,336.4	-8,128.9	-349.6	8,136.2	0.00	0.00	0.00	
14,700.0	90.30	180.19	6,335.8	-8,228.9	-349.9	8,236.2	0.00	0.00	0.00	
14,800.0	90.30	180.19	6,335.3	-8,328.9	-350.2	8,336.1	0.00	0.00	0.00	
14,900.0	90.30	180.19	6,334.8	-8,428.9	-350.5	8,436.1	0.00	0.00	0.00	
15,000.0	90.30	180.19	6,334.3	-8,528.9	-350.9	8,536.0	0.00	0.00	0.00	
15,100.0	90.30	180.19	6,333.7	-8,628.9	-351.2	8,636.0	0.00	0.00	0.00	
15,200.0	90.30	180.19	6,333.2	-8,728.9	-351.5	8,735.9	0.00	0.00	0.00	
15,300.0	90.30	180.19	6,332.7	-8,828.9	-351.8	8,835.8	0.00	0.00	0.00	
15,400.0	90.30	180.19	6,332.2	-8,928.9	-352.2	8,935.8	0.00	0.00	0.00	
15,500.0	90.30	180.19	6,331.6	-9,028.9	-352.5	9,035.7	0.00	0.00	0.00	
15,600.0	90.30	180.19	6,331.1	-9,128.9	-352.8	9,135.7	0.00	0.00	0.00	
15,700.0	90.30	180.19	6,330.6	-9,228.9	-353.1	9,235.6	0.00	0.00	0.00	
15,800.0	90.30	180.19	6,330.1	-9,328.9	-353.5	9,335.6	0.00	0.00	0.00	
15,900.0	90.30	180.19	6,329.5	-9,428.9	-353.8	9,435.5	0.00	0.00	0.00	
16,000.0	90.30	180.19	6,329.0	-9,528.9	-354.1	9,535.4	0.00	0.00	0.00	
16,100.0	90.30	180.19	6,328.5	-9,628.9	-354.4	9,635.4	0.00	0.00	0.00	
16,193.0	90.30	180.19	6,328.0	-9,721.8	-354.8	9,728.3	0.00	0.00	0.00	

Casing Points					
Measured Depth (ft)	Vertical Depth (ft)	Name	Casing Diameter (")	Hole Diameter (")	
800.0	800.0	9 5/8"	9-5/8	13-1/2	
6,672.4	6,378.0	7" Csg	7	8-3/4	

Formations						
Measured Depth (ft)	Vertical Depth (ft)	Name	Lithology	Dip (°)	Dip Direction (°)	
266.0	266.0	Base of Fox Hills		0.00		
4,140.6	4,127.0	Sussex		0.00		
4,879.7	4,863.0	Shannon		0.00		
6,280.7	6,228.0	Sharon Springs		0.00		
6,423.9	6,316.0	Niobrara		0.00		
6,517.8	6,354.0	Top A Target		0.00		
	6,383.0	Base A Target		0.00		