

PSC 6-10

Existing Features	
KB	12

Surface csg shoe at	536
---------------------	-----

Bottom of Foxhills (FHM)	711
--------------------------	-----

TOC (CBL)	4000
-----------	------

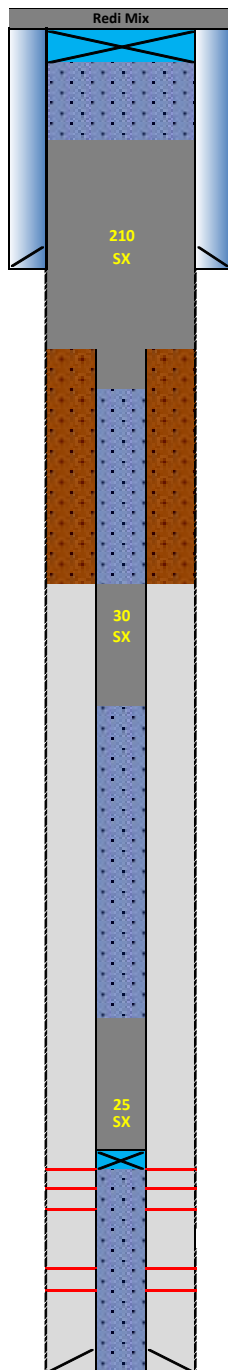
Sussex Top	4006
Not producing Sussex w/in 1 mile	
Sussex Bottom	4241

Shannon Base	4643
Not producing Shannon w/in 1 mile	

Niobrara Top	6817
Perf Top	6854
Perf Bottom	6922

Codell Top	7110
Perf Top	7110
Perf Bottom	7129

PBMD	7248
4 1/2" 11.6# CSG	7266



Proposed Additions for P&A

80	CIBP 8 5/8" 24#
----	-----------------

436	TOC
-----	-----

Cement Blend: Type III w/ cello flake and CaCl₂ as necessary, mixed at 14.8 ppg and 1.33 cuft/sk yield.

850	Casing Stub
950	BOC

3900	TOC
------	-----

Cement Blend: "G" w/ 0.4% CD-32, 0.4% ASA-301, mixed at 15.8 ppg and 1.15 cuft/sk yield.

4300	BOC
------	-----

6390	TOC
------	-----

Cement Blend: "G" w/ 20% silica flour, 0.4% CD-32, 0.4% ASA-301 and R-3 to achieve 2:30 pump time, mixed at 15.8 ppg and 1.38 cuft/sk yield.

6790	CIBP 4 1/2" 11.6#
------	-------------------

API#	05-123-21620			
WINS:	75684			
Equipment	Specs.	Depth	Capacity (bbl/ft)	Capacity ft ³ /ft
Surface Casing	8 5/8" (24#)	536	0.0637	0.3576
Production Casina	4 1/2" (11.6#)	7266	0.0155	0.0873
Production Tubing	2 3/8" (4.7#)	7064	0.0039	0.0217
Hole Size (TOP)	9	N/A	0.0787	0.4418
Hole Size (SU/SH)	N/A	N/A	N/A	N/A
Hole Size (NB)	N/A	N/A	N/A	N/A

Cement Calculations				
Section	Volume cu-ft	Cement Sacks	Excess	
Open Hole	194.21	146.02	40%	Foxhills Plug 9 in. hole
Surface Casing	35.76	26.89		
Production Casing	8.73	6.56		
FX Total	229.97	179.47	210	
OH X CSG Annulus				
Production Casing	34.92	30.36522		
SU Total	34.92	30.36522	30	
OH X CSG Annulus				
Production Casing	34.92	25.30		
NB/CD Total	34.92	25.30	25	

Cement Yield	1.33	1.15	1.38
	FX	SX/SH	NB

Legend	
	Existing cement with CBL
	New cement
	Assumed cement w/ no CBL
	Cast Iron Cement Retainer
	Cast Iron Bridge Plug
	Mud
	Water + Biocide