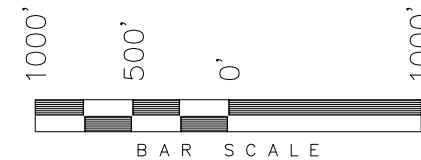
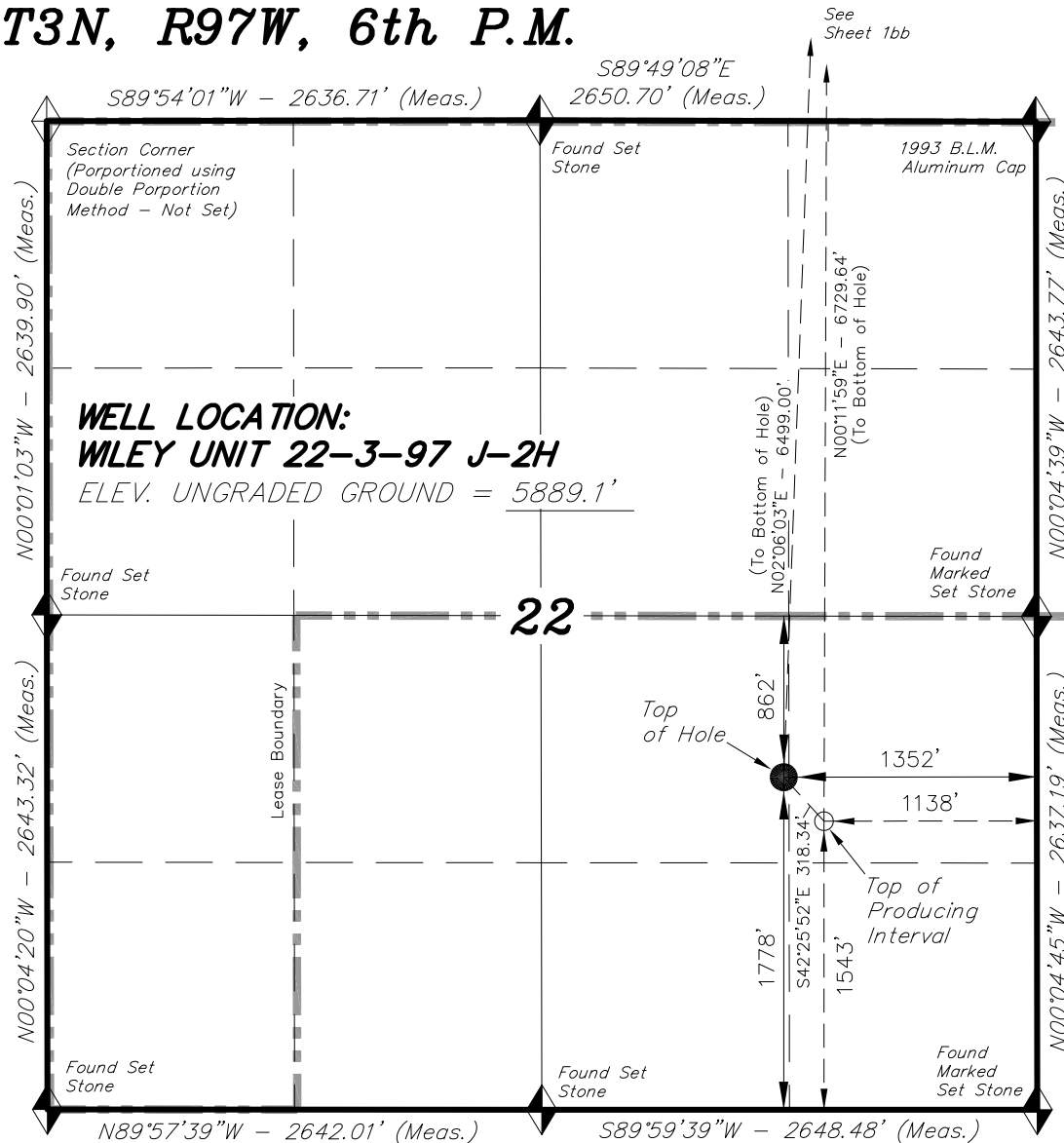


T3N, R97W, 6th P.M.

ENDEAVOUR OPERATING CORPORATION

WELL LOCATION, WILEY UNIT 22-3-97 J-2H,
LOCATED AS SHOWN IN THE NW 1/4 SE 1/4
OF SECTION 22, T3N, R97W, 6TH P.M.
RIO BLANCO COUNTY, COLORADO.



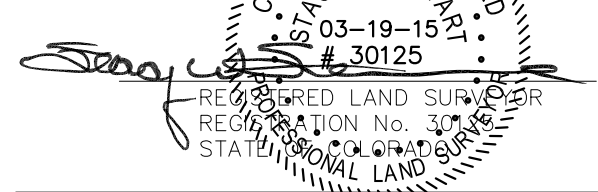
NOTES:

1. Well footages are measured at right angles to the Section Lines.
2. Bearings are based on Global Positioning Satellite observations.
3. G.P.S. Operator: K. Stewart, (PDOP) = 1.4



= SECTION CORNERS LOCATED

THIS IS TO CERTIFY THAT THE ABOVE PLAT WAS
PREPARED FROM FIELD NOTES OF ACTUAL SURVEYS
MADE BY ME OR UNDER MY SUPERVISION AND THAT
THE SAME ARE TRUE AND CORRECT TO THE BEST
OF MY KNOWLEDGE AND BELIEF.



BASIS OF ELEV;
U.S.G.S. 7-1/2 min
QUAD (Smizer Gulch)

| NAD 83 (SURFACE LOCATION) | |
|--------------------------------|-------------------------------|
| LATITUDE | = 40°12'43.47" (40.212075°) |
| LONGITUDE | = 108°15'35.37" (108.259826°) |
| NAD 27 (SURFACE LOCATION) | |
| LATITUDE | = 40°12'43.58" (40.212105°) |
| LONGITUDE | = 108°15'33.06" (108.259182°) |
| NAD 83 (TOP OF PROD. INTERVAL) | |
| LATITUDE | = 40°12'41.15" (40.211430°) |
| LONGITUDE | = 108°15'32.61" (108.259058°) |
| NAD 27 (TOP OF PROD. INTERVAL) | |
| LATITUDE | = 40°12'41.26" (40.211460°) |
| LONGITUDE | = 108°15'30.29" (108.258414°) |

TRI STATE LAND SURVEYING & CONSULTING

180 NORTH VERNAL AVE. - VERNAL, UTAH 84078
(435) 781-2501

| | | |
|-----------------------------|---------------------|-------------|
| DATE SURVEYED: 10-02-14 | SURVEYED BY: K.G.S. | SHEET 1b |
| DATE DRAWN: 08-30-12 | DRAWN BY: M.W. | |
| REVISED: 03-19-15 R.V.C. | SCALE: 1" = 1000' | |

See
Sheet 1b