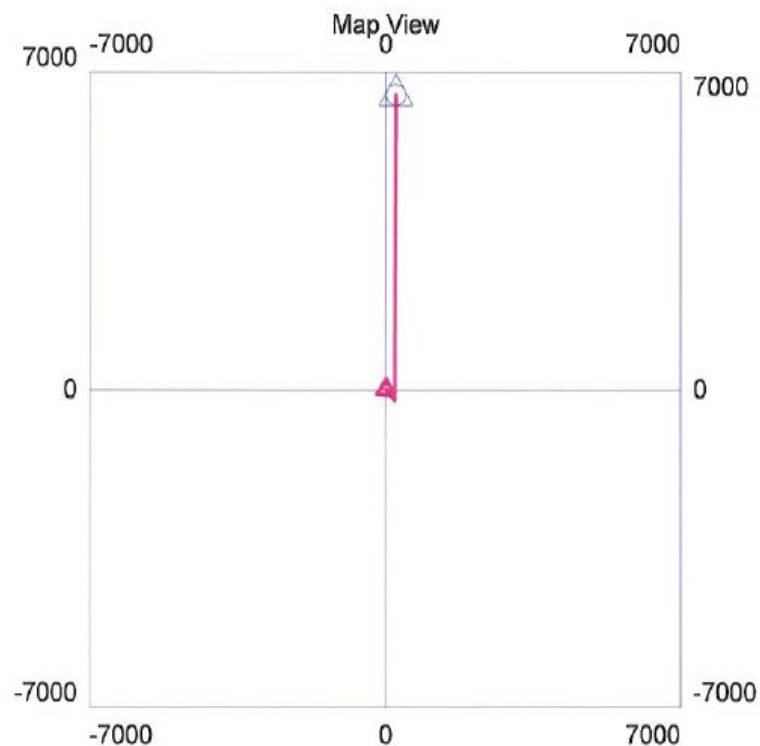
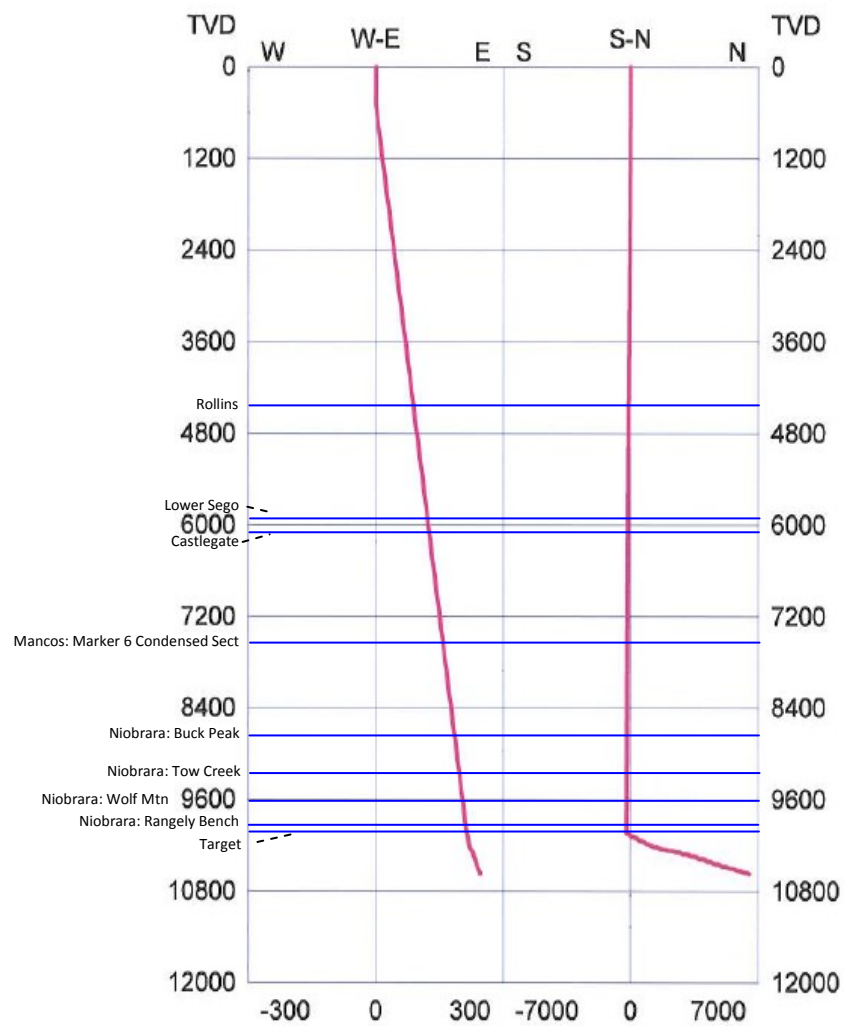


# WU 22-3-97\_J-2H

## Directional Survey



WELL DETAILS: Wiley Unit 22-3-97 J-2H, G.L. = 5,889 Ft above S.L.

Geodetic Sys: US State Plane NAD27

Utah North 4301

XY in U.S. Feet

Surface Location:

+N/-S: 0.00

+E/-W: 0.00

Lat: 40.212105° N

Long: 108.259182° W

Bottom Hole Location:

+N/-S: 6,493.40

+E/-W: 245.60

Lat: 40.2299280° N

Long: 108.2583161° W

Project: uinta basin  
Date: Monday, March 23, 2015 at 01:34 PM

Directional Survey Data - WU\_22-3-97\_J-2H

GEODETIC SYS: US STATE PLANE NAD27 UTAH NORTH 4301

Depth Units = Feet  
X,Y Units = Feet

MD	TVD	EW	NS	LAT	LONG
-----	-----	-----	-----	-----	-----
0.00	0.00	0.00	0.00	40.212105 N	108.259182 W
500.00	500.00	0.00	0.00		
10049.02	10043.71	214.41	-235.13		
10099.67	10051.80	214.64	-185.13		
10149.74	10054.50	214.87	-135.14		
10200.07	10060.28	215.10	-85.14		
10250.83	10069.02	215.33	-35.14		
10301.37	10076.35	215.57	14.86		
10352.07	10084.77	215.80	64.86		
10402.21	10088.52	216.03	114.86		
10452.21	10088.83	216.26	164.86		
10502.74	10096.12	216.49	214.86		
10552.85	10099.40	216.73	264.86		
10603.32	10106.27	216.96	314.86		
10653.64	10111.96	217.19	364.86		
10705.45	10125.55	217.42	414.86		
10756.35	10135.06	217.65	464.86		
10806.53	10139.27	217.88	514.86		
10856.53	10139.53	218.12	564.86		
10906.84	10145.14	218.35	614.86		
10956.93	10148.16	218.58	664.86		
11007.37	10154.77	218.81	714.86		
11057.69	10160.47	219.04	764.85		
11109.22	10172.94	219.28	814.85		
11160.03	10181.97	219.51	864.85		
11210.22	10186.28	219.74	914.85		
11260.22	10186.90	219.97	964.85		
11310.35	10190.56	220.20	1014.85		
11360.40	10192.71	220.43	1064.85		
11410.67	10197.93	220.67	1114.85		
11460.94	10203.13	220.90	1164.85		
11511.84	10212.67	221.13	1214.85		
11562.34	10219.76	221.36	1264.85		
11612.46	10223.24	221.59	1314.85		
11662.47	10223.80	221.82	1364.85		
11712.47	10223.52	222.06	1414.85		
11762.60	10227.15	222.29	1464.85		
11812.76	10231.09	222.52	1514.85		
11862.95	10235.50	222.75	1564.85		
11913.46	10242.65	222.98	1614.85		
11963.75	10248.05	223.22	1664.85		
12013.82	10250.68	223.45	1714.84		
12063.82	10251.02	223.68	1764.84		
12113.82	10250.66	223.91	1814.84		
12163.87	10252.83	224.14	1864.84		
12213.90	10254.53	224.37	1914.84		
12264.15	10259.58	224.61	1964.84		
12314.47	10265.20	224.84	2014.84		
12364.64	10269.40	225.07	2064.84		
12414.68	10271.24	225.30	2114.84		
12464.68	10271.12	225.53	2164.84		
12514.68	10270.50	225.77	2214.84		
12564.70	10272.00	226.00	2264.84		
12614.75	10274.09	226.23	2314.84		
12665.01	10279.27	226.46	2364.84		
12715.36	10285.15	226.69	2414.84		
12765.54	10289.47	226.92	2464.84		
12815.57	10291.07	227.16	2514.84		
12865.57	10290.44	227.39	2564.84		
12915.58	10289.37	227.62	2614.84		
12965.60	10290.49	227.85	2664.83		
13015.68	10293.34	228.08	2714.83		
13066.10	10299.88	228.32	2764.83		
13116.71	10307.71	228.55	2814.83		
13167.10	10313.90	228.78	2864.83		
13217.18	10316.77	229.01	2914.83		
13267.18	10316.70	229.24	2964.83		
13317.19	10315.68	229.47	3014.83		
13367.19	10316.05	229.71	3064.83		
13417.31	10319.56	229.94	3114.83		
13467.82	10326.71	230.17	3164.83		
13518.62	10335.67	230.40	3214.83		
13569.18	10343.18	230.63	3264.83		
13619.33	10347.11	230.86	3314.83		
13669.33	10347.67	231.10	3364.83		
13719.34	10346.85	231.33	3414.83		
13769.34	10347.02	231.56	3464.83		
13819.45	10350.34	231.79	3514.83		
13869.96	10357.51	232.02	3564.82		
13920.28	10351.92	232.26	3614.82		
13970.91	10359.89	232.49	3664.82		
14021.75	10369.13	232.72	3714.82		
14072.28	10376.39	232.95	3764.82		
14122.40	10379.92	233.18	3814.82		
14172.40	10380.29	233.41	3864.82		

14222.41	10379.60	233.65	3914.82
14272.41	10380.29	233.88	3964.82
14322.58	10384.42	234.11	4014.82
14373.21	10392.35	234.34	4064.82
14424.13	10402.00	234.57	4114.82
14474.75	10409.92	234.81	4164.82
14524.92	10414.00	235.04	4214.82
14574.92	10414.66	235.27	4264.82
14624.93	10413.81	235.50	4314.82
14674.93	10414.07	235.73	4364.82
14725.06	10417.69	235.96	4414.82
14775.63	10425.23	236.20	4464.82
14826.54	10434.83	236.43	4514.81
14877.21	10443.05	236.66	4564.81
14927.35	10446.71	236.89	4614.81
14977.38	10448.55	237.12	4664.81
15027.39	10447.60	237.36	4714.81
15077.39	10447.40	237.59	4764.81
15127.47	10450.26	237.82	4814.81
15177.91	10456.87	238.05	4864.81
15228.68	10465.70	238.28	4914.81
15279.30	10473.62	238.51	4964.81
15329.41	10476.84	238.75	5014.81
15379.47	10479.44	238.98	5064.81
15429.48	10478.53	239.21	5114.81
15479.48	10478.06	239.44	5164.81
15529.53	10480.28	239.67	5214.81
15579.86	10485.97	239.91	5264.81
15630.48	10493.91	240.14	5314.81
15681.03	10501.34	240.37	5364.81
15731.10	10503.90	240.60	5414.81
15781.21	10507.26	240.83	5464.80
15831.22	10506.55	241.06	5514.80
15881.22	10506.14	241.30	5564.80
15931.26	10508.19	241.53	5614.80
15981.54	10513.47	241.76	5664.80
16032.10	10521.01	241.99	5714.80
16082.32	10525.70	242.22	5764.80
16132.53	10530.22	242.45	5814.80
16182.56	10532.07	242.69	5864.80
16232.60	10534.00	242.92	5914.80
16282.60	10533.82	243.15	5964.80
16332.65	10536.06	243.38	6014.80
16382.94	10541.52	243.61	6064.80
16433.55	10549.35	243.85	6114.80
16483.74	10553.71	244.08	6164.80
16533.95	10558.27	244.31	6214.80
16584.00	10560.36	244.54	6264.80
16634.09	10563.51	244.77	6314.80
16684.09	10563.58	245.00	6364.79
16734.16	10566.20	245.24	6414.79
16784.53	10572.29	245.47	6464.79
16813.54	10577.12	245.60	6493.40

40.2299280 N 108.2583161 W

FORMATION:	TVD (GL)	MD (GL)
Rollins	4,434	4,455
Lower Sego	5,965	5,981
Castlegate	6,126	6,156
Mancos - Marker 6	7,491	7,529
Niobrara - Buck Peak	8,820	8,861
Niobrara - Tow Creek	9,285	9,330
Niobrara - Wolf Mountain	9,631	9,701
Niobrara - Rangely Bench	9,991	10,151
Target	10,049	10,369

End of Report