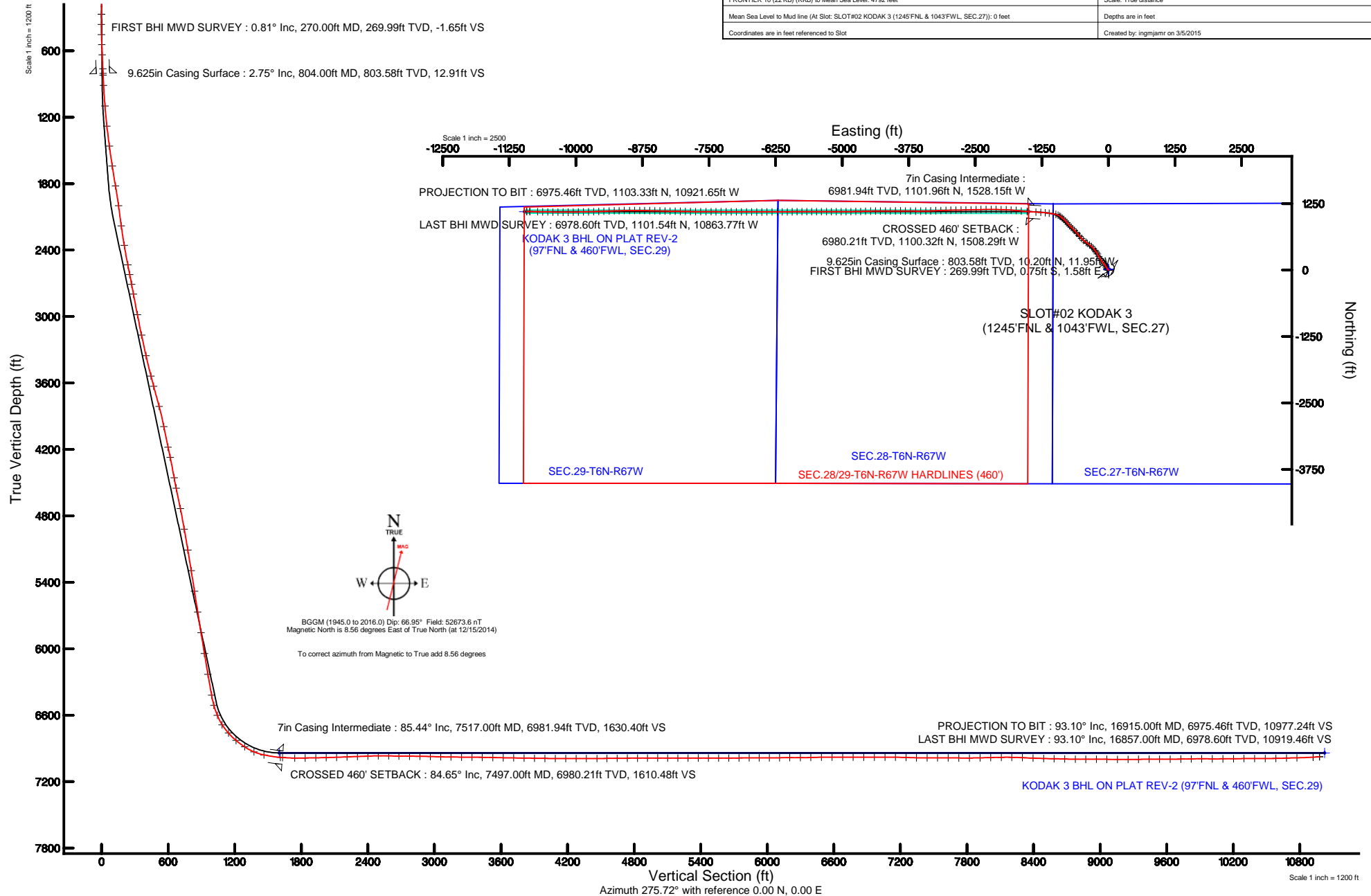




# EXTRACTION OIL & GAS

Location: COLORADO Slot: SLOT#02 KODAK 3 (1245'FNL & 1043'FWL, SEC.27)  
Field: WELD COUNTY (NAD83/TRUE NORTH) Well: KODAK 3  
Facility: SEC.27-T06N-R67W Wellbore: KODAK 3 PWB

Plot reference wellpath is KODAK 3 PWP (REV-B.0)	
True vertical depths are referenced to FRONTIER 10 (22'KB) (RKB)	Grid System: NAD83 / Lambert Colorado SP, Northern Zone (501), US feet
Measured depths are referenced to FRONTIER 10 (22'KB) (RKB)	North Reference: True north
FRONTIER 10 (22'KB) (RKB) to Mean Sea Level: 4792 feet	Scale: True distance
Mean Sea Level to Mud line (At Slot: SLOT#02 KODAK 3 (1245'FNL & 1043'FWL, SEC.27)): 0 feet	Depths are in feet
Coordinates are in feet referenced to Slot	Created by: ingmjmr on 3/5/2015





# Actual Wellpath Report

KODAK 3 AWP

Page 1 of 9



## REFERENCE WELLPATH IDENTIFICATION

Operator	EXTRACTION OIL & GAS	Slot	SLOT#02 KODAK 3 (1245'FNL & 1043'FWL, SEC.27)
Area	COLORADO	Well	KODAK 3
Field	WELD COUNTY (NAD83/TRUE NORTH)	Wellbore	KODAK 3 AWB
Facility	SEC.27-T06N-R67W		

## REPORT SETUP INFORMATION

Projection System	NAD83 / Lambert Colorado SP, Northern Zone (501), US feet	Software System	WellArchitect® 4.1.1
North Reference	True	User	Ingmjamr
Scale	0.999964	Report Generated	3/5/2015 at 6:33:23 PM
Convergence at slot	0.40° East	Database/Source file	Denver/KODAK_3_AWB.xml

## WELLPATH LOCATION

	Local coordinates		Grid coordinates		Geographic coordinates	
	North[ft]	East[ft]	Easting[US ft]	Northing[US ft]	Latitude	Longitude
Slot Location	-14.57	0.00	3171020.75	1411648.57	40°27'42.300"N	104°53'07.368"W
Facility Reference Pt			3171020.65	1411663.14	40°27'42.444"N	104°53'07.368"W
Field Reference Pt			3185481.27	1419166.81	40°28'55.560"N	104°49'59.556"W

## WELLPATH DATUM

Calculation method	Minimum curvature	FRONTIER 10 (22'KB) (RKB) to Facility Vertical Datum	4792.00ft
Horizontal Reference Pt	Slot	FRONTIER 10 (22'KB) (RKB) to Mean Sea Level	4792.00ft
Vertical Reference Pt	FRONTIER 10 (22'KB) (RKB)	FRONTIER 10 (22'KB) (RKB) to Mud Line at Slot (SLOT#02 KODAK 3 (1245'FNL & 1043'FWL, SEC.27))	4792.00ft
MD Reference Pt	FRONTIER 10 (22'KB) (RKB)	Section Origin	N 0.00, E 0.00 ft
Field Vertical Reference	Mean Sea Level	Section Azimuth	275.72°



# Actual Wellpath Report

KODAK 3 AWP

Page 2 of 9



## REFERENCE WELLPATH IDENTIFICATION

Operator	EXTRACTION OIL & GAS	Slot	SLOT#02 KODAK 3 (1245'FNL & 1043'FWL, SEC.27)
Area	COLORADO	Well	KODAK 3
Field	WELD COUNTY (NAD83/TRUE NORTH)	Wellbore	KODAK 3 AWP
Facility	SEC.27-T06N-R67W		

## WELLPATH DATA (151 stations) † = interpolated/extrapolated station

MD [ft]	Inclination [°]	Azimuth [°]	TVD [ft]	Vert Sect [ft]	North [ft]	East [ft]	DLS [°/100ft]	Comments
0.00†	0.000	115.510	0.00	0.00	0.00	0.00	0.00	
22.00	0.000	115.510	22.00	0.00	0.00	0.00	0.00	
270.00	0.810	115.510	269.99	-1.65	-0.75	1.58	0.33	FIRST BHI MWD SURVEY
362.00	0.550	22.650	361.99	-2.39	-0.63	2.34	1.09	
454.00	1.850	313.050	453.97	-1.34	0.79	1.42	1.89	
545.00	2.950	305.870	544.89	1.86	3.17	-1.55	1.25	
637.00	2.680	306.430	636.78	5.75	5.83	-5.20	0.29	
762.00	2.830	301.020	761.63	11.05	9.16	-10.19	0.24	
821.00	2.720	300.190	820.56	13.65	10.61	-12.65	0.20	
914.00	4.890	329.180	913.36	18.01	15.13	-16.59	3.05	
1101.00	8.050	329.240	1099.15	30.55	33.23	-27.37	1.69	
1285.00	9.850	326.910	1280.90	48.07	57.49	-42.55	1.00	
1469.00	12.370	326.810	1461.44	70.32	87.17	-61.94	1.37	
1652.00	11.460	318.200	1640.51	96.04	117.13	-84.79	1.09	
1836.00	13.190	318.010	1820.26	125.06	146.36	-111.02	0.94	
2020.00	12.190	327.170	1999.78	152.70	178.29	-135.60	1.22	
2205.00	13.740	331.440	2180.06	177.25	214.01	-156.69	0.98	
2389.00	15.880	330.240	2357.94	204.17	255.06	-179.64	1.17	
2573.00	18.230	328.120	2533.84	236.35	301.36	-207.34	1.32	
2665.00	17.090	326.380	2621.50	253.70	324.83	-222.42	1.37	
2757.00	16.200	325.080	2709.64	270.63	346.61	-237.25	1.05	
2849.00	15.740	324.510	2798.09	287.21	367.30	-251.84	0.53	
3041.00	14.980	318.920	2983.24	322.46	407.21	-283.27	0.87	
3232.00	14.840	313.030	3167.82	359.91	442.51	-317.37	0.80	
3424.00	14.460	304.520	3353.60	400.48	472.87	-355.10	1.14	
3615.00	17.010	307.300	3537.43	445.18	503.32	-396.98	1.39	
3711.00	17.350	306.750	3629.15	469.41	520.40	-419.62	0.39	
3903.00	18.220	310.730	3811.98	518.53	557.11	-465.31	0.78	
4093.00	14.550	316.610	3994.24	560.92	593.85	-504.23	2.12	
4285.00	16.270	318.680	4179.34	598.84	631.58	-538.56	0.94	



# Actual Wellpath Report

KODAK 3 AWP

Page 3 of 9



## REFERENCE WELLPATH IDENTIFICATION

Operator	EXTRACTION OIL & GAS	Slot	SLOT#02 KODAK 3 (1245'FNL & 1043'FWL, SEC.27)
Area	COLORADO	Well	KODAK 3
Field	WELD COUNTY (NAD83/TRUE NORTH)	Wellbore	KODAK 3 AWP
Facility	SEC.27-T06N-R67W		

## WELLPATH DATA (151 stations) † = interpolated/extrapolated station

MD [ft]	Inclination [°]	Azimuth [°]	TVD [ft]	Vert Sect [ft]	North [ft]	East [ft]	DLS [°/100ft]	Comments
4381.00	15.740	318.280	4271.62	618.27	651.40	-556.10	0.56	
4572.00	13.820	319.410	4456.29	653.86	688.06	-588.19	1.02	
4668.00	15.990	317.720	4549.05	671.98	706.56	-604.55	2.31	
4860.00	14.880	317.250	4734.12	710.08	744.23	-639.07	0.58	
5051.00	12.700	314.450	4919.61	744.83	776.94	-670.71	1.19	
5243.00	11.920	312.640	5107.19	777.15	805.15	-700.36	0.45	
5435.00	11.430	314.100	5295.22	807.91	831.83	-728.61	0.30	
5625.00	12.530	320.750	5481.09	837.24	860.89	-755.17	0.93	
5816.00	12.430	320.460	5667.58	866.48	892.79	-781.37	0.06	
6008.00	12.290	317.600	5855.13	896.38	923.81	-808.30	0.33	
6200.00	11.690	312.890	6042.94	927.09	952.14	-836.33	0.60	
6392.00	11.820	310.770	6230.92	958.69	978.22	-865.48	0.23	
6583.00	11.690	305.920	6417.92	991.43	1002.35	-895.96	0.52	
6679.00	17.230	303.510	6510.84	1012.43	1015.91	-915.71	5.80	
6775.00	23.050	292.420	6600.96	1043.05	1030.95	-944.97	7.23	
6871.00	32.190	287.500	6685.95	1086.18	1045.84	-986.83	9.81	
6966.00	42.690	278.830	6761.32	1143.31	1058.44	-1042.98	12.34	
7062.00	49.870	277.440	6827.63	1212.58	1068.20	-1111.63	7.55	
7158.00	56.420	276.120	6885.18	1289.34	1077.22	-1187.86	6.91	
7254.00	66.760	273.280	6930.80	1373.64	1084.03	-1271.90	11.08	
7349.00	78.780	273.730	6958.89	1464.14	1089.58	-1362.30	12.66	
7497.00†	84.646	274.677	6980.21	1610.48	1100.32	-1508.29	4.01	CROSSED 460' SETBACK
7628.00	89.840	275.500	6986.51	1741.27	1111.92	-1638.58	4.01	
7722.00	90.580	274.780	6986.16	1835.27	1120.34	-1732.20	1.10	
7817.00	91.100	274.130	6984.77	1930.23	1127.72	-1826.90	0.88	
7911.00	91.380	272.690	6982.74	2024.13	1133.31	-1920.71	1.56	
8006.00	92.180	271.330	6979.79	2118.88	1136.64	-2015.61	1.66	
8100.00	92.180	270.490	6976.21	2212.48	1138.13	-2109.52	0.89	
8194.00	92.340	269.730	6972.50	2305.96	1138.31	-2203.45	0.83	
8289.00	91.690	269.810	6969.16	2400.39	1137.93	-2298.39	0.69	



# Actual Wellpath Report

KODAK 3 AWP

Page 4 of 9



## REFERENCE WELLPATH IDENTIFICATION

Operator	EXTRACTION OIL & GAS	Slot	SLOT#02 KODAK 3 (1245'FNL & 1043'FWL, SEC.27)
Area	COLORADO	Well	KODAK 3
Field	WELD COUNTY (NAD83/TRUE NORTH)	Wellbore	KODAK 3 AWP
Facility	SEC.27-T06N-R67W		

## WELLPATH DATA (151 stations)

MD [ft]	Inclination [°]	Azimuth [°]	TVD [ft]	Vert Sect [ft]	North [ft]	East [ft]	DLS [°/100ft]	Comments
8383.00	90.520	269.160	6967.35	2493.81	1137.09	-2392.37	1.42	
8477.00	89.420	268.400	6967.40	2587.12	1135.09	-2486.34	1.42	
8571.00	88.920	268.630	6968.76	2680.37	1132.65	-2580.30	0.59	
8667.00	89.910	268.640	6969.74	2775.63	1130.36	-2676.27	1.03	
8761.00	89.110	269.370	6970.54	2868.98	1128.73	-2770.25	1.15	
8855.00	88.150	268.840	6972.79	2962.32	1127.26	-2864.21	1.17	
8950.00	88.430	268.780	6975.63	3056.59	1125.29	-2959.15	0.30	
9044.00	89.720	268.720	6977.14	3149.88	1123.24	-3053.11	1.37	
9139.00	88.890	267.610	6978.30	3244.05	1120.20	-3148.05	1.46	
9234.00	89.850	267.540	6979.34	3338.08	1116.18	-3242.96	1.01	
9328.00	89.350	268.280	6980.00	3431.21	1112.75	-3336.89	0.95	
9423.00	88.310	268.720	6981.94	3525.43	1110.27	-3431.84	1.19	
9518.00	89.170	269.160	6984.03	3619.74	1108.51	-3526.80	1.02	
9613.00	88.950	270.750	6985.58	3714.25	1108.44	-3621.78	1.69	
9707.00	89.290	270.830	6987.03	3807.89	1109.73	-3715.76	0.37	
9802.00	88.920	270.520	6988.51	3902.51	1110.85	-3810.75	0.51	
9896.00	89.450	270.950	6989.85	3996.14	1112.06	-3904.73	0.73	
9990.00	89.410	269.270	6990.78	4089.68	1112.24	-3998.72	1.79	
10085.00	89.780	269.360	6991.46	4184.09	1111.10	-4093.71	0.40	
10178.00	90.460	269.540	6991.26	4276.53	1110.21	-4186.71	0.76	
10272.00	89.910	269.910	6990.96	4370.02	1109.76	-4280.70	0.71	
10367.00	90.210	269.350	6990.86	4464.48	1109.14	-4375.70	0.67	
10459.00	91.100	269.340	6989.81	4555.90	1108.09	-4467.69	0.97	
10551.00	90.460	268.310	6988.55	4647.23	1106.21	-4559.66	1.32	
10643.00	90.270	267.840	6987.97	4738.41	1103.11	-4651.60	0.55	
10735.00	90.000	269.070	6987.75	4829.67	1100.63	-4743.57	1.37	
10826.00	90.760	269.130	6987.15	4920.06	1099.20	-4834.55	0.84	
10918.00	90.400	269.700	6986.22	5011.49	1098.27	-4926.54	0.73	
11010.00	89.070	269.940	6986.64	5103.00	1097.98	-5018.54	1.47	
11102.00	89.780	269.900	6987.57	5194.53	1097.85	-5110.54	0.77	



# Actual Wellpath Report

KODAK 3 AWP

Page 5 of 9



## REFERENCE WELLPATH IDENTIFICATION

Operator	EXTRACTION OIL & GAS	Slot	SLOT#02 KODAK 3 (1245'FNL & 1043'FWL, SEC.27)
Area	COLORADO	Well	KODAK 3
Field	WELD COUNTY (NAD83/TRUE NORTH)	Wellbore	KODAK 3 AWP
Facility	SEC.27-T06N-R67W		

## WELLPATH DATA (151 stations)

MD [ft]	Inclination [°]	Azimuth [°]	TVD [ft]	Vert Sect [ft]	North [ft]	East [ft]	DLS [°/100ft]	Comments
11194.00	90.770	269.900	6987.12	5286.05	1097.69	-5202.53	1.08	
11287.00	90.390	270.250	6986.18	5378.59	1097.81	-5295.53	0.56	
11379.00	88.980	270.120	6986.69	5470.16	1098.11	-5387.52	1.54	
11471.00	89.930	269.870	6987.56	5561.70	1098.10	-5479.52	1.07	
11563.00	90.330	270.040	6987.35	5653.23	1098.03	-5571.52	0.47	
11655.00	91.290	270.100	6986.05	5744.77	1098.14	-5663.51	1.05	
11747.00	90.640	269.390	6984.50	5836.26	1097.73	-5755.49	1.05	
11839.00	89.530	269.430	6984.37	5927.70	1096.78	-5847.49	1.21	
11931.00	90.090	269.460	6984.67	6019.15	1095.89	-5939.48	0.61	
12023.00	90.730	269.690	6984.01	6110.61	1095.21	-6031.48	0.74	
12116.00	89.840	269.600	6983.55	6203.09	1094.63	-6124.47	0.96	
12211.00	90.490	269.510	6983.28	6297.54	1093.89	-6219.47	0.69	
12307.00	91.440	269.610	6981.66	6392.97	1093.16	-6315.45	1.00	
12403.00	91.350	269.700	6979.32	6488.40	1092.58	-6411.42	0.13	
12499.00	89.750	269.610	6978.40	6583.86	1092.00	-6507.41	1.67	
12595.00	89.420	270.640	6979.10	6679.40	1092.21	-6603.41	1.13	
12690.00	90.770	270.930	6978.94	6774.04	1093.51	-6698.40	1.45	
12786.00	90.060	270.500	6978.25	6869.67	1094.71	-6794.38	0.86	
12882.00	89.570	269.590	6978.56	6965.20	1094.79	-6890.38	1.08	
12978.00	89.970	270.780	6978.94	7060.75	1095.10	-6986.38	1.31	
13073.00	89.510	269.920	6979.37	7155.33	1095.68	-7081.38	1.03	
13169.00	88.060	269.970	6981.41	7250.82	1095.58	-7177.35	1.51	
13264.00	88.640	270.130	6984.14	7345.31	1095.67	-7272.31	0.63	
13360.00	89.630	270.260	6985.59	7440.86	1095.99	-7368.30	1.04	
13455.00	90.740	270.730	6985.29	7535.46	1096.81	-7463.29	1.27	
13551.00	89.750	270.370	6984.88	7631.07	1097.74	-7559.29	1.10	
13647.00	89.020	269.930	6985.91	7726.61	1097.99	-7655.28	0.89	
13743.00	90.430	270.550	6986.37	7822.16	1098.39	-7751.27	1.60	
13839.00	91.630	271.430	6984.64	7917.82	1100.05	-7847.24	1.55	
13935.00	91.380	270.840	6982.12	8013.48	1101.95	-7943.19	0.67	



# Actual Wellpath Report

KODAK 3 AWP

Page 6 of 9



## REFERENCE WELLPATH IDENTIFICATION

Operator	EXTRACTION OIL & GAS	Slot	SLOT#02 KODAK 3 (1245'FNL & 1043'FWL, SEC.27)
Area	COLORADO	Well	KODAK 3
Field	WELD COUNTY (NAD83/TRUE NORTH)	Wellbore	KODAK 3 AWP
Facility	SEC.27-T06N-R67W		

## WELLPATH DATA (151 stations)

MD [ft]	Inclination [°]	Azimuth [°]	TVD [ft]	Vert Sect [ft]	North [ft]	East [ft]	DLS [°/100ft]	Comments
14031.00	90.950	271.550	6980.17	8109.16	1103.95	-8039.15	0.86	
14126.00	88.890	270.830	6980.30	8203.85	1105.92	-8134.12	2.30	
14222.00	87.340	271.130	6983.46	8299.47	1107.56	-8230.05	1.64	
14318.00	87.740	271.300	6987.58	8395.09	1109.60	-8325.94	0.45	
14414.00	88.330	271.560	6990.87	8490.76	1111.99	-8421.86	0.67	
14509.00	88.980	271.630	6993.10	8585.49	1114.63	-8516.79	0.69	
14605.00	88.450	270.690	6995.25	8681.16	1116.58	-8612.75	1.12	
14701.00	89.200	270.860	6997.22	8776.78	1117.88	-8708.72	0.80	
14795.00	90.150	270.890	6997.75	8870.44	1119.31	-8802.70	1.01	
14891.00	90.400	269.940	6997.29	8966.03	1120.01	-8898.70	1.02	
14987.00	88.950	269.060	6997.84	9061.46	1119.17	-8994.69	1.77	
15083.00	89.570	268.820	6999.08	9156.78	1117.39	-9090.67	0.69	
15179.00	90.680	269.120	6998.87	9252.11	1115.67	-9186.65	1.20	
15274.00	90.250	268.190	6998.10	9346.38	1113.44	-9281.62	1.08	
15370.00	90.650	267.550	6997.34	9441.48	1109.87	-9377.55	0.79	
15466.00	89.660	267.910	6997.08	9536.54	1106.07	-9473.47	1.10	
15562.00	90.740	267.760	6996.75	9631.63	1102.44	-9569.40	1.14	
15658.00	90.250	268.270	6995.92	9726.76	1099.12	-9665.34	0.74	
15754.00	91.320	268.020	6994.60	9821.91	1096.01	-9761.28	1.14	
15849.00	89.780	268.730	6993.69	9916.13	1093.32	-9856.23	1.79	
15945.00	89.690	268.700	6994.14	10011.41	1091.16	-9952.21	0.10	
16041.00	90.830	268.760	6993.70	10106.69	1089.03	-10048.18	1.19	
16137.00	90.280	269.900	6992.77	10202.09	1087.91	-10144.17	1.32	
16232.00	91.360	269.780	6991.41	10296.58	1087.65	-10239.16	1.14	
16328.00	89.440	270.930	6990.74	10392.15	1088.24	-10335.15	2.33	
16424.00	90.400	271.540	6990.88	10487.85	1090.31	-10431.12	1.18	
16520.00	90.920	271.010	6989.77	10583.56	1092.45	-10527.09	0.77	
16616.00	92.060	271.370	6987.27	10679.22	1094.44	-10623.04	1.25	
16712.00	91.440	271.760	6984.34	10774.92	1097.06	-10718.95	0.76	
16857.00	93.100	271.780	6978.60	10919.46	1101.54	-10863.77	1.14	LAST BHI MWD SURVEY





# Actual Wellpath Report

KODAK 3 AWP

Page 7 of 9



## REFERENCE WELLPATH IDENTIFICATION

Operator	EXTRACTION OIL & GAS	Slot	SLOT#02 KODAK 3 (1245'FNL & 1043'FWL, SEC.27)
Area	COLORADO	Well	KODAK 3
Field	WELD COUNTY (NAD83/TRUE NORTH)	Wellbore	KODAK 3 AWB
Facility	SEC.27-T06N-R67W		

## WELLPATH DATA (151 stations)

MD [ft]	Inclination [°]	Azimuth [°]	TVD [ft]	Vert Sect [ft]	North [ft]	East [ft]	DLS [°/100ft]	Comments
16915.00	93.100	271.780	6975.46	10977.24	1103.33	-10921.65	0.00	PROJECTION TO BIT

## HOLE & CASING SECTIONS - Ref Wellbore: KODAK 3 AWB Ref Wellpath: KODAK 3 AWP

String/Diameter	Start MD [ft]	End MD [ft]	Interval [ft]	Start TVD [ft]	End TVD [ft]	Start N/S [ft]	Start E/W [ft]	End N/S [ft]	End E/W [ft]
9.625in Casing Surface	22.00	804.00	782.00	22.00	803.58	0.00	0.00	10.20	-11.95
8.75in Open Hole	804.00	7349.00	6545.00	803.58	6958.89	10.20	-11.95	1089.58	-1362.30
7in Casing Intermediate	22.00	7517.00	7495.00	22.00	6981.94	0.00	0.00	1101.96	-1528.15
6in Open Hole	7349.00	16915.00	9566.00	6958.89	6975.46	1089.58	-1362.30	1103.33	-10921.65





# Actual Wellpath Report

KODAK 3 AWP

Page 8 of 9



## REFERENCE WELLPATH IDENTIFICATION

Operator	EXTRACTION OIL & GAS	Slot	SLOT#02 KODAK 3 (1245'FNL & 1043'FWL, SEC.27)
Area	COLORADO	Well	KODAK 3
Field	WELD COUNTY (NAD83/TRUE NORTH)	Wellbore	KODAK 3 AWB
Facility	SEC.27-T06N-R67W		

## TARGETS

Name	TVD [ft]	North [ft]	East [ft]	Grid East [US ft]	Grid North [US ft]	Latitude	Longitude	Shape
SEC.27-T6N-R67W	0.00	14.57	0.00	3171020.64	1411663.14	40°27'42.444"N	104°53'07.368"W	polygon
SEC.28-T6N-R67W	0.00	14.57	0.00	3171020.64	1411663.14	40°27'42.444"N	104°53'07.368"W	polygon
SEC.29-T6N-R67W	0.00	14.57	0.00	3171020.64	1411663.14	40°27'42.444"N	104°53'07.368"W	polygon
KODAK 3 BHL ON PLAT REV-2 (97'FNL & 460'FWL, SEC.29)	6940.00	1099.03	-10968.81	3160045.00	1412671.51	40°27'53.136"N	104°55'29.280"W	point
KODAK 3 DRILLING CORRIDOR (60')	6940.00	0.00	0.00	3171020.75	1411648.57	40°27'42.300"N	104°53'07.368"W	polygon
KODAK 3 LANDING POINT REV-2	6940.00	1096.64	-1499.79	3169513.44	1412734.74	40°27'53.136"N	104°53'26.772"W	point
SEC.28/29-T6N-R67W HARDLINES (460')	7150.00	14.57	0.00	3171020.64	1411663.14	40°27'42.444"N	104°53'07.368"W	polygon

## WELLPATH COMPOSITION - Ref Wellbore: KODAK 3 AWB Ref Wellpath: KODAK 3 AWP

Start MD [ft]	End MD [ft]	Positional Uncertainty Model	Log Name/Comment	Wellbore
22.00	762.00	NaviTrak (Standard)	BHI MWD/NAVITRAK (STD) 13.5" HOLE <270-762>	KODAK 3 AWB
762.00	7349.00	NaviTrak (Standard)	BHI MWD/NAVITRAK (STD) 8.75" HOLE <821-7349>	KODAK 3 AWB
7349.00	16857.00	NaviTrak (Standard)	BHI MWD/NAVITRAK (STD) 6.125" HOLE <7628-16857>	KODAK 3 AWB
16857.00	16915.00	Blind Drilling (std)	Projection to bit	KODAK 3 AWB



# Actual Wellpath Report

KODAK 3 AWP

Page 9 of 9



## REFERENCE WELLPATH IDENTIFICATION

Operator	EXTRACTION OIL & GAS	Slot	SLOT#02 KODAK 3 (1245'FNL & 1043'FWL, SEC.27)
Area	COLORADO	Well	KODAK 3
Field	WELD COUNTY (NAD83/TRUE NORTH)	Wellbore	KODAK 3 AWB
Facility	SEC.27-T06N-R67W		

## WELLPATH COMMENTS

MD [ft]	Inclination [°]	Azimuth [°]	TVD [ft]	Comment
270.00	0.810	115.510	269.99	FIRST BHI MWD SURVEY
7497.00	84.646	274.677	6980.21	CROSSED 460' SETBACK
16857.00	93.100	271.780	6978.60	LAST BHI MWD SURVEY
16915.00	93.100	271.780	6975.46	PROJECTION TO BIT