

**Scale: 4.20" / 100'**  
**Measured Depth Log**

**Bottom Hole Coordinates** 470' FSL x 1988' FWL (LAT: 40.33529, -104.33290) PROJECTED

Type of Drilling Fluid LSND, H2O

UNKNOWN	COAL	MARLSTONE
ANHYDRITE	CLAYSTONE	SHALE
GYPSSUM	SALT	SILTSTONE
SIDERITE or LIMONITE	SHALE GRAY	SANDSTONE
LIMESTONE	SHALE COLORED	
DOLOMITE		
CHERT		

## Accessories

### Fossils

F FOSSIL	- ARGILLACEOUS	GLAUCONITE
GASTROPOD	ARGILLITE GRAIN	GYPSIFEROUS
OOLITE	B BENTONITE	HEAVY MINERAL
OSTRACOD	BITUMENOUS SUBSTANCE	KAOLIN
PELECYPOD	BRECCIA FRAGMENTS	MARLSTONE
PELLET	CALCAREOUS	MINERAL CRYSTALS
PISOLITE	CARBONACEOUS FLAKES	NODULES
PLANT REMAINS	CHTK	PHOSPHATE PELLETS
PLANT SPORES	CHTLT	PYRITE
SCAPHOPOD	COAL - THIN BEDS	SALT CAST
CRINOID	DOLOMITIC	SANDY
ECHINOID	FELDSPAR	SILICEOUS
FISH	FERRUGINOUS PELLET	SILTY
FORAMINIFERA	ANHYDRITIC	FERRUGINOUS
		TUFFACEOUS

### Stringer

ANHYDRITE STRINGER
BENTONITE STRINGER
COAL STRINGER
DOLOMITE STRINGER
GYPSUM STRINGER
LIMESTONE STRINGER
MARLSTONE (CALC) STRG
MARLSTONE (DOL) STRG
SANDSTONE STRINGER
SHALE STRINGER
SILTSTONE STRINGER

### Minerals

## Other Symbols

### Oil Show

O ORGANIC	FORMATION TOP	CONNECTION GAS	CRYPTOXLN
P PINPOINT	GAS SHOW	CONNECTION DOWN	E EARTHY
V VUGGY	MINDEPTH MN DEPTH	CASING	FX FINELYXLN

- EVEN
- QUESTIONABLE
- SPOTTED STAINING

### Engineering

NORMAL FAULT
OIL SHOW
OVERTURNED STRATA
REVERSE FAULT
CASING

### Rounding

CONNECTION (LEFT)	ANGULAR	MUDSTONE
CONNECTION (RIGHT)	ROUNDED	PACKSTONE
CONNECTION GAS	SIDEWALL CORE (RIGHT)	WACKSTONE
F FRACTURE	SLIDE	
INTERCRYSTALLINE	CORE - LOST	
INTEROOLITIC	DST INTERVAL	
MOULDIC	FAULT	

### Textures

WIRELINE TESTED - LEFT	BOUNDSTONE	MODERATE
WIRELINE TESTED - RT	CHALKY	POOR
		WELL

### Sorting

--	--	--



ing

O 80202

2

CONGLOMERATE	CHALK
BRECCIA	SILTY SHALE
TILL	NO SAMPLE
BENTONITE	SHALY SANDSTONE
TUFF	SHALY SILTSTONE
IGNEOUS	
METAMORPHIC	
CEMENT	


Year	Number of people in the workforce (millions)	Number of people aged 65 and over (millions)
1990	65	15
1995	75	18
2000	85	20
2005	95	22
2010	100	25


0

— — — — —

MD: 6,052'	
Inclination: 34.1	
Azimuth: 178.64	
VS: -134.8'	
TVD: 5,924.77'	

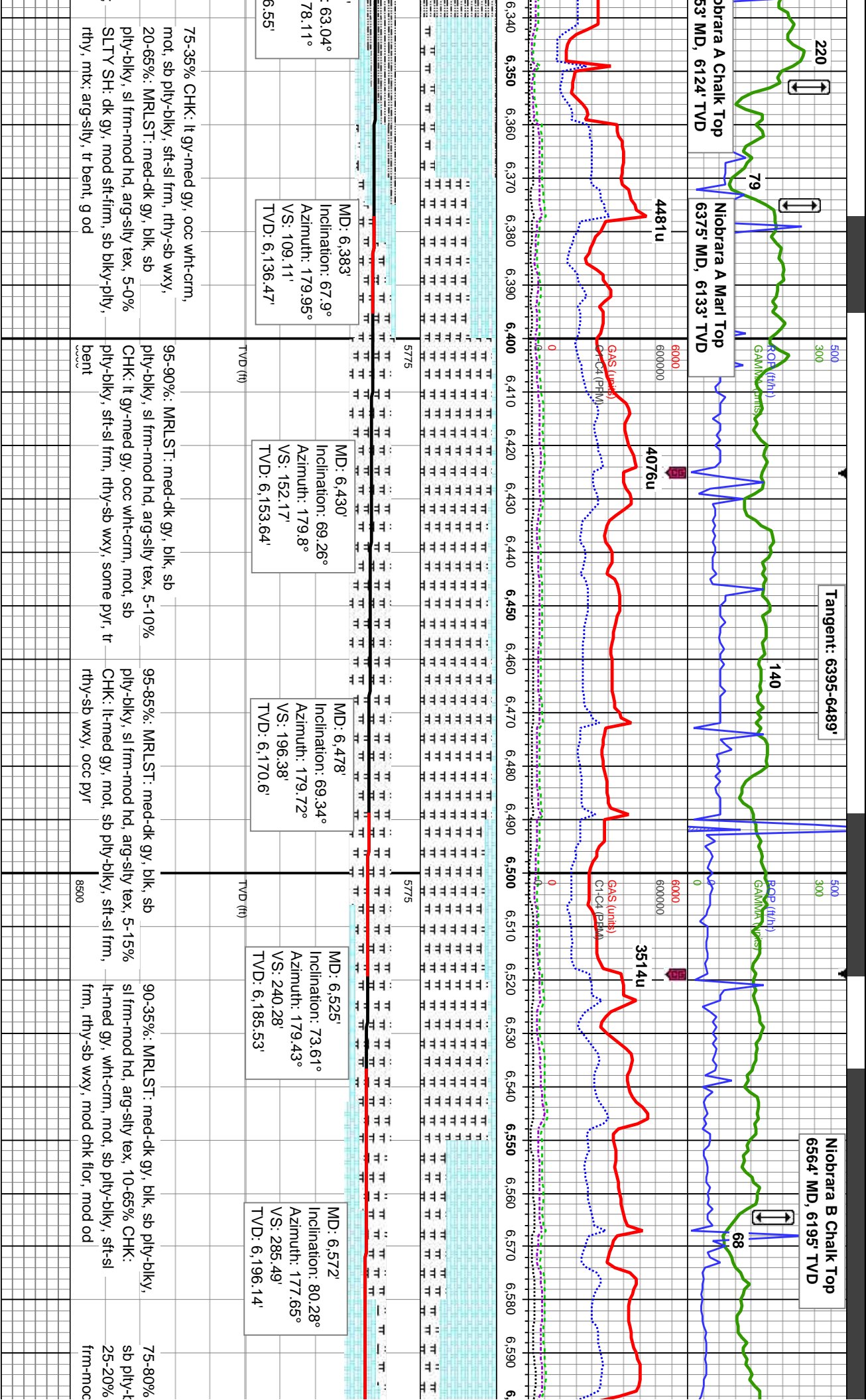
1

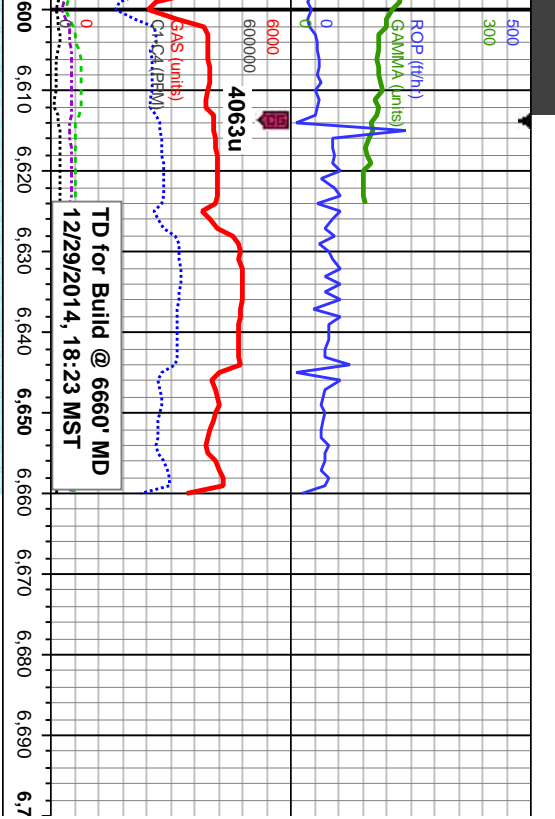












MD: 6,618'  
Inclination: 87.24°  
Azimuth: 176.35°  
VS: 330.82'  
TVD: 6,201.14'

CHK: lt-med gy, wht-crm, occ dk gy, mot,  
lky, sft-sl frm, rhy-sb wxy, tr imbd cal,  
MRLST: dk gy-blk, sb pty-blky, sl  
hd, arg-sily tex, mtx; calc, g od