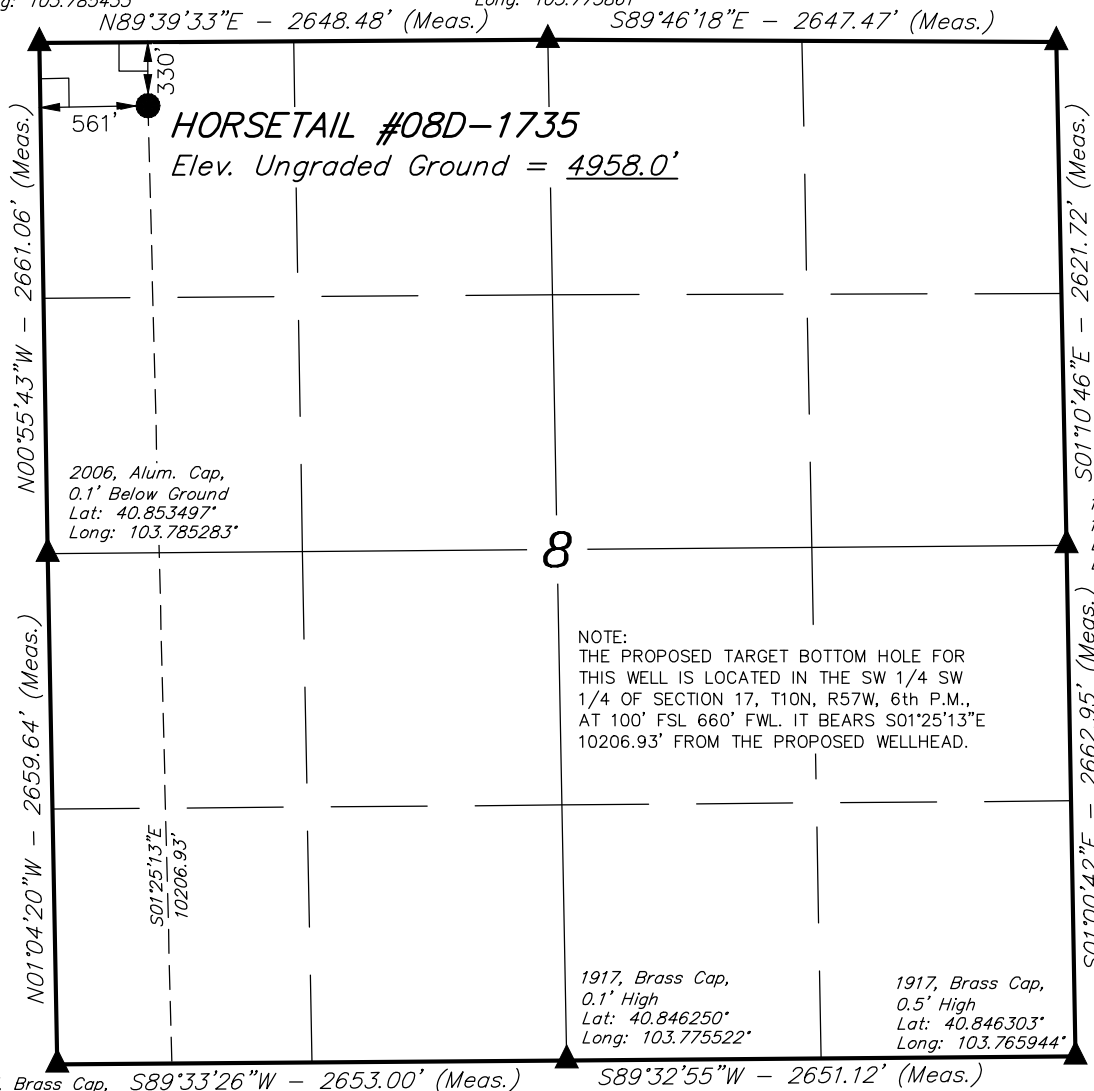


T10N, R57W, 6th P.M.

2006, Alum. Cap,
0.9' Below Ground
Lat: 40.860797°
Long: 103.785433°

2006, Alum. Cap,
0.8' Below Ground
Lat: 40.860836°
Long: 103.775861°

1917, Brass Cap,
1.2' High
Lat: 40.860800°
Long: 103.766292°



1917, Brass Cap, S89°33'26"W - 2653.00' (Meas.)
0.4' High
Lat: 40.846200°
Long: 103.785111°

Target
Bottom Hole

LEGEND:

- └─┘ = 90° SYMBOL
- = PROPOSED WELLHEAD.
- ▲ = SECTION CORNERS LOCATED.
- = TARGET BOTTOM HOLE.

PDOP = 1.6

NAD 83 (SURFACE LOCATION)	
LATITUDE	= 40°51'35.64" (40.859900)
LONGITUDE	= 103°47'00.20" (103.783389)
NAD 27 (SURFACE LOCATION)	
LATITUDE	= 40°51'35.69" (40.859914)
LONGITUDE	= 103°46'58.39" (103.782886)

WHITING OIL & GAS CORP.

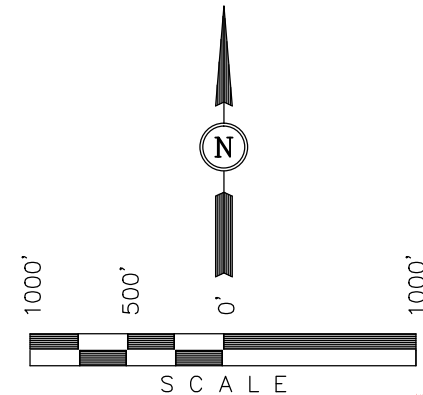
Well location, HORSETAIL #08D-1735, (SURFACE LOCATION), located as shown in the NW 1/4 NW 1/4 of Section 8, T10N, R57W, 6th P.M., Weld County, Colorado.

BASIS OF ELEVATION

SPOT ELEVATION LOCATED AT THE NORTHEAST CORNER OF SECTION 15, T9N, R58W, 6th P.M. TAKEN FROM THE GATEHOOK SPRING, QUADRANGLE, COLORADO, WELD COUNTY, 7.5 MINUTE QUAD (TOPOGRAPHIC MAP) PUBLISHED BY THE UNITED STATES DEPARTMENT OF THE INTERIOR, GEOLOGICAL SURVEY. SAID ELEVATION IS MARKED AS BEING 4679 FEET.

BASIS OF BEARINGS

BASIS OF BEARINGS IS A G.P.S. OBSERVATION.



CERTIFICATION

THIS IS TO CERTIFY THAT THE ABOVE PLAT WAS PREPARED FROM FIELD NOTES OF ACTUAL SURVEYS MADE BY ME OR UNDER MY SUPERVISION AND THAT THE SAME ARE TRUE AND CORRECT TO THE BEST OF MY KNOWLEDGE AND BELIEF.

REGISTERED LAND SURVEYOR
REGISTRATION NO. 28285
STATE OF COLORADO
02-13-15

REV: 02-13-15 K.B.

UINTAH ENGINEERING & LAND SURVEYING
85 SOUTH 200 EAST - VERNAL, UTAH 84078
(435) 789-1017

SCALE 1" = 1000'	DATE SURVEYED: 12-09-14	DATE DRAWN: 12-29-14
PARTY DALLAS NIELSEN J.S. K.B.	REFERENCES G.L.O. PLAT	
WEATHER COLD	FILE WHITING OIL & GAS CORP.	

T10N, R57W, 6th P.M.

1917, Brass Cap,
0.4' High
Lat: 40.846200°
Long: 103.785111°

Surface
Location

1917, Brass Cap,
0.1' High
Lat: 40.846250°
Long: 103.775522°

1917, Brass Cap,
0.5' High
Lat: 40.846303°
Long: 103.765944°

N89°33'26"E - 2653.00' (Meas.)

N89°32'55"E - 2651.12' (Meas.)

N00°42'39"W - 2657.16' (Meas.)

S00°40'22"E - 2657.00' (Meas.)

2011, Alum. Cap,
0.4' Below Ground
Lat: 40.838908°
Long: 103.784997°

2011, Alum. Cap,
0.4' High
Lat: 40.839011°
Long: 103.765839°

NOTE:
THE PROPOSED TARGET BOTTOM HOLE
BEARS S01°25'13"E 10206.93' FROM THE
PROPOSED WELLHEAD WHICH IS LOCATED IN
THE NW 1/4 NW 1/4 OF SECTION 8, T10N,
R57W, 6th P.M. AT 330' FNL 561' FWL.

HORSETAIL #08D-1735
Target Bottom Hole

1917, Brass Cap,
0.5' High
Lat: 40.831661°
Long: 103.784878°

S89°34'38"W
2653.48' (Meas.)

1917, Brass Cap,
0.5' High
Lat: 40.831661°
Long: 103.775292°

S89°32'06"W - 2651.09' (Meas.)

1917, Brass Cap,
0.6' High
Lat: 40.831714°
Long: 103.765714°

LEGEND:

└─┘ = 90° SYMBOL

● = PROPOSED WELLHEAD.

▲ = SECTION CORNERS LOCATED.

○ = TARGET BOTTOM HOLE.

NAD 83 (TARGET BOTTOM HOLE)

LATITUDE = 40°49'54.84" (40.831900)
LONGITUDE = 103°46'56.99" (103.782497)

NAD 27 (TARGET BOTTOM HOLE)

LATITUDE = 40°49'54.89" (40.831914)
LONGITUDE = 103°46'55.19" (103.781997)

WHITING OIL & GAS CORP.

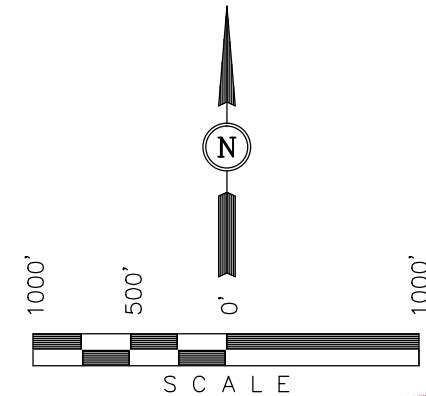
Well location, HORSETAIL #08D-1735 (TARGET
BOTTOM HOLE), located as shown in the SW 1/4
SW 1/4 of Section 17, T10N, R57W, 6th P.M.,
Weld County, Colorado.

BASIS OF ELEVATION

SPOT ELEVATION LOCATED AT THE NORTHEAST CORNER OF
SECTION 15, T9N, R58W, 6th P.M. TAKEN FROM THE
GATEHOOK SPRING, QUADRANGLE, COLORADO, WELD COUNTY,
7.5 MINUTE QUAD (TOPOGRAPHIC MAP) PUBLISHED BY THE
UNITED STATES DEPARTMENT OF THE INTERIOR, GEOLOGICAL
SURVEY. SAID ELEVATION IS MARKED AS BEING 4679 FEET.

BASIS OF BEARINGS

BASIS OF BEARINGS IS A G.P.S. OBSERVATION.



CERTIFICATION

THIS IS TO CERTIFY THAT THE ABOVE PLAT WAS PREPARED FROM
FIELD NOTES OF ACTUAL SURVEYS MADE BY ME OR UNDER MY
SUPERVISION AND THAT THE SAME ARE TRUE AND CORRECT TO THE
BEST OF MY KNOWLEDGE AND BELIEF.

REGISTERED LAND SURVEYOR
REGISTRATION NO. 28285
STATE OF COLORADO 02-13-15

REV: 02-13-15 K.B.

UINTAH ENGINEERING & LAND SURVEYING
85 SOUTH 200 EAST - VERNAL, UTAH 84078
(435) 789-1017

SCALE 1" = 1000'	DATE SURVEYED: 12-09-14	DATE DRAWN: 12-29-14
PARTY DALLAS NIELSEN J.S. K.B.	REFERENCES G.L.O. PLAT	
WEATHER COLD	FILE WHITING OIL & GAS CORP.	