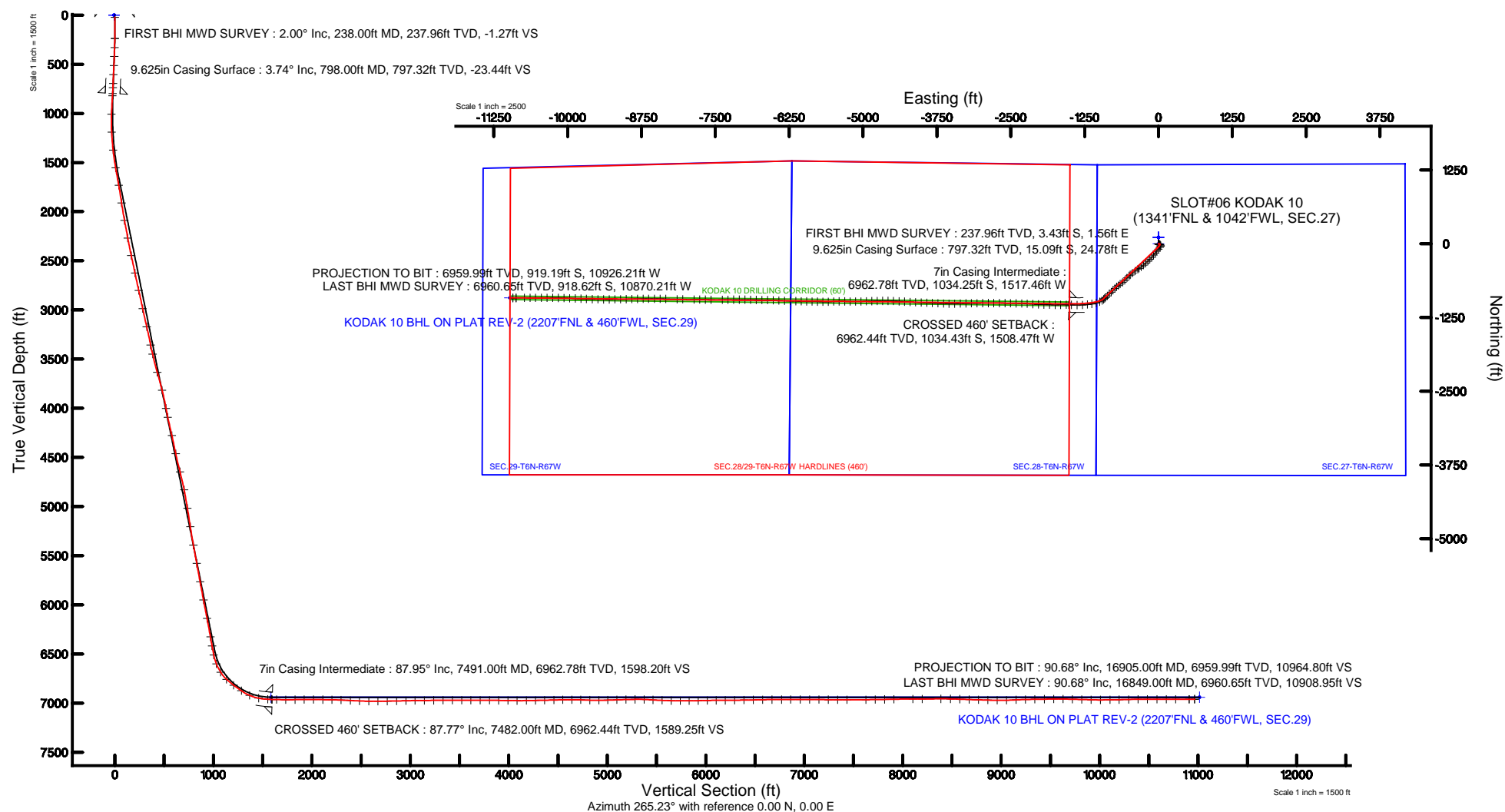
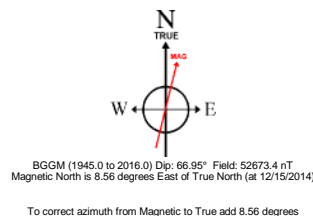


Location:	COLORADO	Slot:	SLOT#06 KODAK 10 (1341'FNL & 1042'FWL, SEC.27)
Field:	WELD COUNTY (NAD83/TRUE NORTH)	Well:	KODAK 10
Facility:	SEC.27-T06N-R67W	Wellbore:	KODAK 10 PWB

Location:	COLORADO	Slot:	SLOT#06 KODAK 10 (1341'FNL & 1042'FWL, SEC.27)
Field:	WELD COUNTY (NAD83/TRUE NORTH)	Well:	KODAK 10
Facility:	SEC.27-T06N-R67W	Wellbore:	KODAK 10 PWB

True vertical depths are referenced to FRONTIER 10 (22KB) (RKB)	Grid System: NAD83 / Lambert Colorado SP, Northern Zone (501), US feet
Measured depths are referenced to FRONTIER 10 (22KB) (RKB)	North Reference: True north
FRONTIER 10 (22KB) (RKB) to Mean Sea Level: 4792 feet	Scale: True distance
Mean Sea Level to Mud line (At Slot: SLOT#06 KODAK 10 (1341FNL & 1042FWL, SEC.27): 0 feet	Depths are in feet
Coordinates are in feet referenced to Slot	Created by: ingimiamr on 2/9/2015





Actual Wellpath Report

KODAK 10 AWP

Page 1 of 8



REFERENCE WELLPATH IDENTIFICATION

Operator	EXTRACTION OIL & GAS	Slot	SLOT#06 KODAK 10 (1341'FNL & 1042'FWL, SEC.27)
Area	COLORADO	Well	KODAK 10
Field	WELD COUNTY (NAD83/TRUE NORTH)	Wellbore	KODAK 10 AWB
Facility	SEC.27-T06N-R67W		

REPORT SETUP INFORMATION

Projection System	NAD83 / Lambert Colorado SP, Northern Zone (501), US feet	Software System	WellArchitect® 4.1.1
North Reference	True	User	Ingmjmr
Scale	0.999964	Report Generated	2/9/2015 at 12:14:22 PM
Convergence at slot	0.40° East	Database/Source file	Denver/KODAK_10_AWB.xml

WELLPATH LOCATION

	Local coordinates		Grid coordinates		Geographic coordinates	
	North[ft]	East[ft]	Easting[US ft]	Northing[US ft]	Latitude	Longitude
Slot Location	-109.29	0.00	3171021.40	1411553.85	40°27'41.364"N	104°53'07.368"W
Facility Reference Pt			3171020.65	1411663.14	40°27'42.444"N	104°53'07.368"W
Field Reference Pt			3185481.27	1419166.81	40°28'55.560"N	104°49'59.556"W

WELLPATH DATUM

Calculation method	Minimum curvature	FRONTIER 10 (22'KB) (RKB) to Facility Vertical Datum	4792.00ft
Horizontal Reference Pt	Slot	FRONTIER 10 (22'KB) (RKB) to Mean Sea Level	4792.00ft
Vertical Reference Pt	FRONTIER 10 (22'KB) (RKB)	FRONTIER 10 (22'KB) (RKB) to Mud Line at Slot (SLOT#06 KODAK 10 (1341'FNL & 1042'FWL, SEC.27))	4792.00ft
MD Reference Pt	FRONTIER 10 (22'KB) (RKB)	Section Origin	N 0.00, E 0.00 ft
Field Vertical Reference	Mean Sea Level	Section Azimuth	265.23°



Actual Wellpath Report

KODAK 10 AWP

Page 2 of 8



REFERENCE WELLPATH IDENTIFICATION

Operator	EXTRACTION OIL & GAS	Slot	SLOT#06 KODAK 10 (1341'FNL & 1042'FWL, SEC.27)
Area	COLORADO	Well	KODAK 10
Field	WELD COUNTY (NAD83/TRUE NORTH)	Wellbore	KODAK 10 AWB
Facility	SEC.27-T06N-R67W		

WELLPATH DATA (149 stations) † = interpolated/extrapolated station

MD [ft]	Inclination [°]	Azimuth [°]	TVD [ft]	Vert Sect [ft]	North [ft]	East [ft]	DLS [°/100ft]	Comments
0.00†	0.000	155.530	0.00	0.00	0.00	0.00	0.00	
22.00	0.000	155.530	22.00	0.00	0.00	0.00	0.00	
238.00	2.000	155.530	237.96	-1.27	-3.43	1.56	0.93	FIRST BHI MWD SURVEY
330.00	2.300	126.930	329.89	-3.19	-6.00	3.70	1.20	
422.00	2.800	114.200	421.80	-6.53	-8.03	7.23	0.82	
514.00	2.840	112.380	513.69	-10.53	-9.82	11.38	0.11	
606.00	2.770	109.230	605.58	-14.59	-11.42	15.59	0.18	
697.00	2.690	110.740	696.48	-18.52	-12.90	19.66	0.12	
740.00	3.030	114.540	739.42	-20.43	-13.73	21.64	0.90	
822.00	4.040	112.000	821.27	-24.89	-15.71	26.29	1.25	
1009.00	5.190	148.660	1007.70	-34.56	-25.41	36.80	1.66	
1193.00	6.350	204.960	1190.90	-33.24	-41.75	36.84	3.01	
1377.00	9.440	217.090	1373.14	-18.12	-63.02	23.44	1.90	
1560.00	13.590	219.830	1552.42	7.00	-91.52	0.61	2.29	
1744.00	13.970	222.800	1731.13	38.58	-124.41	-28.33	0.44	
1928.00	12.200	216.990	1910.35	67.92	-156.24	-55.12	1.20	
2113.00	15.220	218.960	2090.06	97.73	-190.75	-82.16	1.65	
2297.00	14.390	220.120	2267.95	130.56	-227.01	-112.08	0.48	
2481.00	15.220	227.210	2445.86	165.73	-260.91	-144.54	1.08	
2665.00	15.140	226.160	2623.44	203.41	-293.96	-179.60	0.16	
2850.00	15.770	227.380	2801.75	242.02	-327.71	-215.52	0.38	
3041.00	15.010	227.500	2985.90	282.08	-362.00	-252.86	0.40	
3233.00	14.630	237.260	3171.54	323.16	-391.91	-291.59	1.31	
3424.00	12.890	233.800	3357.05	362.65	-417.54	-329.07	1.01	
3520.00	15.210	236.990	3450.18	382.88	-430.73	-348.28	2.55	
3712.00	17.770	234.070	3634.27	430.15	-461.65	-393.13	1.40	
3903.00	17.320	232.490	3816.38	479.00	-496.06	-439.28	0.34	
4094.00	12.280	227.100	4000.99	518.92	-527.22	-476.74	2.73	
4189.00	15.570	228.650	4093.19	537.11	-542.53	-493.72	3.49	
4381.00	16.970	221.940	4277.51	578.21	-580.40	-531.79	1.22	



Actual Wellpath Report

KODAK 10 AWP

Page 3 of 8



REFERENCE WELLPATH IDENTIFICATION

Operator	EXTRACTION OIL & GAS	Slot	SLOT#06 KODAK 10 (1341'FNL & 1042'FWL, SEC.27)
Area	COLORADO	Well	KODAK 10
Field	WELD COUNTY (NAD83/TRUE NORTH)	Wellbore	KODAK 10 AWB
Facility	SEC.27-T06N-R67W		

WELLPATH DATA (149 stations) † = interpolated/extrapolated station

MD [ft]	Inclination [°]	Azimuth [°]	TVD [ft]	Vert Sect [ft]	North [ft]	East [ft]	DLS [°/100ft]	Comments
4573.00	15.370	223.100	4461.91	617.47	-619.82	-567.91	0.85	
4765.00	17.040	234.900	4646.33	660.64	-654.59	-608.32	1.92	
4956.00	13.020	232.330	4830.76	702.88	-683.84	-648.27	2.13	
5148.00	10.560	235.060	5018.69	736.25	-707.14	-679.81	1.31	
5339.00	11.150	226.950	5206.29	765.88	-729.77	-707.66	0.86	
5529.00	12.820	227.050	5392.14	796.87	-756.68	-736.52	0.88	
5721.00	13.520	225.210	5579.09	830.81	-787.00	-768.03	0.42	
5913.00	13.530	224.670	5765.76	865.06	-818.79	-799.75	0.07	
6104.00	13.850	225.150	5951.34	899.52	-850.80	-831.67	0.18	
6296.00	13.620	228.320	6137.85	935.18	-882.04	-864.84	0.41	
6488.00	12.990	225.440	6324.70	969.84	-912.21	-897.10	0.48	
6583.00	13.050	227.520	6417.26	986.53	-926.95	-912.62	0.50	
6679.00	14.490	222.310	6510.50	1003.90	-943.15	-928.70	1.98	
6775.00	24.550	239.120	6600.93	1030.69	-962.33	-953.99	11.90	
6871.00	33.750	246.340	6684.71	1073.93	-983.32	-995.63	10.24	
6967.00	46.610	254.600	6757.95	1133.74	-1003.38	-1053.97	14.48	
7062.00	54.210	260.440	6818.48	1206.21	-1018.98	-1125.39	9.29	
7158.00	54.920	262.900	6874.15	1284.26	-1030.30	-1202.77	2.21	
7254.00	66.180	266.430	6921.28	1367.70	-1037.92	-1285.86	12.16	
7350.00	79.500	271.570	6949.56	1458.98	-1039.37	-1377.34	14.78	
7446.00	87.030	272.790	6960.81	1553.55	-1035.74	-1472.53	7.94	
7482.00†	87.765	271.361	6962.44	1589.25	-1034.43	-1508.47	4.46	CROSSED 460' SETBACK
7534.00	88.830	269.300	6963.99	1641.02	-1034.13	-1560.44	4.46	
7628.00	89.570	269.370	6965.30	1734.77	-1035.23	-1654.43	0.79	
7722.00	91.510	270.060	6964.42	1828.47	-1035.69	-1748.42	2.19	
7817.00	89.660	271.750	6963.45	1922.99	-1034.19	-1843.39	2.64	
7911.00	89.720	272.100	6963.95	2016.35	-1031.04	-1937.34	0.38	
8006.00	89.540	272.480	6964.57	2110.63	-1027.24	-2032.26	0.44	
8100.00	88.710	272.960	6966.00	2203.81	-1022.78	-2126.14	1.02	
8194.00	87.810	273.230	6968.86	2296.89	-1017.71	-2219.96	1.00	



Actual Wellpath Report

KODAK 10 AWP

Page 4 of 8



REFERENCE WELLPATH IDENTIFICATION

Operator	EXTRACTION OIL & GAS	Slot	SLOT#06 KODAK 10 (1341'FNL & 1042'FWL, SEC.27)
Area	COLORADO	Well	KODAK 10
Field	WELD COUNTY (NAD83/TRUE NORTH)	Wellbore	KODAK 10 AWB
Facility	SEC.27-T06N-R67W		

WELLPATH DATA (149 stations)

MD [ft]	Inclination [°]	Azimuth [°]	TVD [ft]	Vert Sect [ft]	North [ft]	East [ft]	DLS [°/100ft]	Comments
8289.00	86.680	272.060	6973.42	2390.98	-1013.33	-2314.75	1.71	
8383.00	87.660	271.810	6978.06	2484.22	-1010.16	-2408.58	1.08	
8477.00	88.890	270.880	6980.89	2577.64	-1007.95	-2502.51	1.64	
8571.00	90.770	270.950	6981.17	2671.18	-1006.45	-2596.49	2.00	
8667.00	90.770	269.740	6979.88	2766.78	-1005.87	-2692.48	1.26	
8761.00	91.260	270.350	6978.22	2860.44	-1005.80	-2786.46	0.83	
8855.00	91.660	269.690	6975.82	2954.08	-1005.77	-2880.43	0.82	
8950.00	90.580	269.830	6973.97	3048.76	-1006.16	-2975.41	1.15	
9045.00	90.620	268.990	6972.97	3143.50	-1007.14	-3070.40	0.89	
9139.00	90.680	268.780	6971.90	3237.30	-1008.97	-3164.38	0.23	
9234.00	90.650	268.760	6970.80	3332.12	-1011.01	-3259.35	0.04	
9328.00	89.880	267.970	6970.37	3425.97	-1013.69	-3353.31	1.17	
9423.00	89.570	269.350	6970.82	3520.80	-1015.91	-3448.28	1.49	
9518.00	90.680	271.250	6970.62	3615.42	-1015.42	-3543.27	2.32	
9613.00	89.480	271.860	6970.48	3709.84	-1012.84	-3638.23	1.42	
9707.00	89.570	272.180	6971.26	3803.18	-1009.53	-3732.17	0.35	
9802.00	89.510	272.740	6972.02	3897.42	-1005.45	-3827.08	0.59	
9896.00	88.890	272.380	6973.34	3990.64	-1001.25	-3920.98	0.76	
9990.00	89.510	273.040	6974.65	4083.83	-996.81	-4014.86	0.96	
10085.00	91.020	272.730	6974.21	4177.98	-992.02	-4109.74	1.62	
10178.00	90.980	273.170	6972.59	4270.13	-987.24	-4202.60	0.47	
10273.00	91.200	273.370	6970.78	4364.18	-981.82	-4297.43	0.31	
10367.00	91.790	273.020	6968.33	4457.24	-976.58	-4391.25	0.73	
10459.00	90.740	273.010	6966.30	4548.37	-971.75	-4483.10	1.14	
10551.00	90.370	270.570	6965.41	4639.75	-968.87	-4575.04	2.68	
10643.00	88.000	269.130	6966.71	4731.44	-969.11	-4667.02	3.01	
10735.00	88.060	268.440	6969.88	4823.20	-971.06	-4758.95	0.75	
10826.00	90.620	268.560	6970.92	4914.04	-973.44	-4849.90	2.82	
10918.00	91.380	268.530	6969.32	5005.87	-975.78	-4941.86	0.83	
11010.00	91.970	268.260	6966.63	5097.69	-978.36	-5033.78	0.71	



Actual Wellpath Report

KODAK 10 AWP

Page 5 of 8



REFERENCE WELLPATH IDENTIFICATION

Operator	EXTRACTION OIL & GAS	Slot	SLOT#06 KODAK 10 (1341'FNL & 1042'FWL, SEC.27)
Area	COLORADO	Well	KODAK 10
Field	WELD COUNTY (NAD83/TRUE NORTH)	Wellbore	KODAK 10 AWB
Facility	SEC.27-T06N-R67W		

WELLPATH DATA (149 stations)

MD [ft]	Inclination [°]	Azimuth [°]	TVD [ft]	Vert Sect [ft]	North [ft]	East [ft]	DLS [°/100ft]	Comments
11102.00	91.050	270.390	6964.21	5189.42	-979.44	-5125.74	2.52	
11194.00	91.790	270.790	6961.93	5280.99	-978.49	-5217.70	0.91	
11287.00	87.300	271.060	6962.66	5373.50	-976.99	-5310.66	4.84	
11379.00	86.680	268.890	6967.50	5465.06	-977.03	-5402.53	2.45	
11471.00	87.940	267.940	6971.81	5556.81	-979.57	-5494.39	1.71	
11563.00	88.340	268.500	6974.80	5648.64	-982.43	-5586.30	0.75	
11655.00	89.660	270.850	6976.41	5740.34	-982.95	-5678.28	2.93	
11747.00	89.850	271.780	6976.80	5831.82	-980.84	-5770.25	1.03	
11839.00	91.910	270.720	6975.39	5923.29	-978.83	-5862.21	2.52	
11931.00	91.320	271.430	6972.79	6014.78	-977.11	-5954.16	1.00	
12023.00	89.880	271.280	6971.83	6106.25	-974.93	-6046.12	1.57	
12115.00	90.060	271.360	6971.88	6197.73	-972.81	-6138.10	0.21	
12211.00	91.230	272.740	6970.80	6293.04	-969.38	-6234.03	1.88	
12307.00	90.580	272.140	6969.28	6388.27	-965.29	-6329.93	0.92	
12403.00	91.660	272.600	6967.40	6483.50	-961.32	-6425.82	1.22	
12498.00	90.990	272.010	6965.21	6577.75	-957.50	-6520.72	0.94	
12594.00	89.820	270.430	6964.53	6673.22	-955.46	-6616.69	2.05	
12690.00	90.090	271.210	6964.60	6768.76	-954.09	-6712.68	0.86	
12785.00	90.340	271.450	6964.25	6863.23	-951.88	-6807.66	0.36	
12881.00	90.860	271.410	6963.24	6958.66	-949.49	-6903.62	0.54	
12977.00	89.380	270.010	6963.04	7054.21	-948.30	-6999.61	2.12	
13073.00	89.390	270.140	6964.07	7149.87	-948.17	-7095.60	0.14	
13168.00	89.480	269.750	6965.01	7244.54	-948.26	-7190.60	0.42	
13264.00	89.880	269.790	6965.54	7340.24	-948.65	-7286.59	0.42	
13359.00	89.510	269.750	6966.05	7434.94	-949.03	-7381.59	0.39	
13551.00	90.890	270.560	6965.38	7626.22	-948.51	-7573.58	0.83	
13647.00	90.680	270.280	6964.06	7721.82	-947.81	-7669.57	0.36	
13742.00	91.200	270.740	6962.51	7816.40	-946.96	-7764.56	0.73	
13838.00	91.080	270.680	6960.60	7911.95	-945.77	-7860.53	0.14	
14030.00	90.060	271.160	6958.69	8102.99	-942.69	-8052.49	0.59	



Actual Wellpath Report

KODAK 10 AWP

Page 6 of 8



REFERENCE WELLPATH IDENTIFICATION

Operator	EXTRACTION OIL & GAS	Slot	SLOT#06 KODAK 10 (1341'FNL & 1042'FWL, SEC.27)
Area	COLORADO	Well	KODAK 10
Field	WELD COUNTY (NAD83/TRUE NORTH)	Wellbore	KODAK 10 AWB
Facility	SEC.27-T06N-R67W		

WELLPATH DATA (149 stations)

MD [ft]	Inclination [°]	Azimuth [°]	TVD [ft]	Vert Sect [ft]	North [ft]	East [ft]	DLS [°/100ft]	Comments
14126.00	90.590	271.730	6958.14	8198.42	-940.27	-8148.46	0.81	
14317.00	90.190	271.130	6956.84	8388.30	-935.50	-8339.39	0.38	
14413.00	89.020	270.400	6957.50	8483.85	-934.22	-8435.38	1.44	
14509.00	88.120	270.110	6959.90	8579.45	-933.79	-8531.35	0.98	
14605.00	87.690	270.130	6963.41	8675.03	-933.59	-8627.28	0.45	
14700.00	88.800	269.680	6966.32	8769.67	-933.75	-8722.24	1.26	
14795.00	88.090	268.400	6968.90	8864.42	-935.34	-8817.19	1.54	
14890.00	89.230	268.450	6971.12	8959.25	-937.95	-8912.12	1.20	
14986.00	91.820	269.400	6970.24	9055.04	-939.75	-9008.09	2.87	
15082.00	92.680	269.060	6966.47	9150.73	-941.04	-9104.01	0.96	
15178.00	91.170	268.810	6963.24	9246.47	-942.82	-9199.94	1.59	
15274.00	90.860	269.990	6961.54	9342.20	-943.83	-9295.91	1.27	
15370.00	90.980	270.190	6960.00	9437.84	-943.68	-9391.90	0.24	
15466.00	91.050	271.490	6958.30	9533.37	-942.27	-9487.87	1.36	
15562.00	88.550	271.860	6958.64	9628.75	-939.46	-9583.82	2.63	
15658.00	88.710	272.480	6960.93	9724.02	-935.83	-9679.73	0.67	
15753.00	88.640	272.680	6963.13	9818.21	-931.56	-9774.61	0.22	
15849.00	88.120	272.240	6965.84	9913.41	-927.44	-9870.48	0.71	
15945.00	90.150	271.830	6967.29	10008.72	-924.03	-9966.40	2.16	
16041.00	90.860	271.930	6966.45	10104.07	-920.88	-10062.35	0.75	
16136.00	90.980	271.300	6964.92	10198.47	-918.20	-10157.30	0.67	
16232.00	91.660	270.950	6962.71	10293.93	-916.32	-10253.25	0.80	
16328.00	89.850	269.270	6961.44	10389.57	-916.13	-10349.23	2.57	
16424.00	90.830	269.520	6960.87	10485.32	-917.15	-10445.23	1.05	
16520.00	89.660	270.110	6960.46	10581.01	-917.46	-10541.22	1.36	
16615.00	89.600	269.810	6961.08	10675.68	-917.52	-10636.22	0.32	
16711.00	89.970	269.890	6961.44	10771.37	-917.77	-10732.22	0.39	
16849.00	90.680	269.410	6960.65	10908.95	-918.62	-10870.21	0.62	LAST BHI MWD SURVEY
16905.00	90.680	269.410	6959.99	10964.80	-919.19	-10926.21	0.00	PROJECTION TO BIT

HOLE & CASING SECTIONS - Ref Wellbore: KODAK 10 AWB Ref Wellpath: KODAK 10 AWP

String/Diameter	Start MD [ft]	End MD [ft]	Interval [ft]	Start TVD [ft]	End TVD [ft]	Start N/S [ft]	Start E/W [ft]	End N/S [ft]	End E/W [ft]
9.625in Casing Surface	22.00	798.00	776.00	22.00	797.32	0.00	0.00	-15.09	24.78
8.75in Open Hole	798.00	7504.00	6706.00	797.32	6963.22	-15.09	24.78	-1034.08	-1530.46
7in Casing Intermediate	22.00	7491.00	7469.00	22.00	6962.78	0.00	0.00	-1034.25	-1517.46
6.125in Open Hole	7504.00	16905.00	9401.00	6963.22	6959.99	-1034.08	-1530.46	-919.19	-10926.21

TARGETS

Name	TVD [ft]	North [ft]	East [ft]	Grid East [US ft]	Grid North [US ft]	Latitude	Longitude	Shape
SEC.27-T6N-R67W	0.00	109.29	0.00	3171020.64	1411663.14	40°27'42.444"N	104°53'07.368"W	polygon
SEC.28-T6N-R67W	0.00	109.29	0.00	3171020.64	1411663.14	40°27'42.444"N	104°53'07.368"W	polygon

SEC.29-T6N-R67W	0.00	109.29	0.00	3171020.64	1411663.14	40°27'42.444"N	104°53'07.368"W	polygon
KODAK 10 BHL ON PLAT REV-2 (2207'FNL & 460'FWL, SEC.29)	6940.00	-915.64	-10975.31	3160053.12	1410562.21	40°27'32.292"N	104°55'29.352"W	point
KODAK 10 DRILLING CORRIDOR (60')	6940.00	0.00	0.00	3171021.40	1411553.85	40°27'41.364"N	104°53'07.368"W	polygon
KODAK 10 LANDING POINT REV-2	6940.00	-1018.00	-1505.49	3169523.06	1410525.48	40°27'31.304"N	104°53'26.844"W	point
SEC.28/29-T6N-R67W HARDLINES (460')	7150.00	109.29	0.00	3171020.64	1411663.14	40°27'42.444"N	104°53'07.368"W	polygon



Actual Wellpath Report

KODAK 10 AWP

Page 7 of 8



REFERENCE WELLPATH IDENTIFICATION

Operator	EXTRACTION OIL & GAS	Slot	SLOT#06 KODAK 10 (1341'FNL & 1042'FWL, SEC.27)
Area	COLORADO	Well	KODAK 10
Field	WELD COUNTY (NAD83/TRUE NORTH)	Wellbore	KODAK 10 AWB
Facility	SEC.27-T06N-R67W		

WELLPATH COMPOSITION - Ref Wellbore: KODAK 10 AWB Ref Wellpath: KODAK 10 AWP

Start MD [ft]	End MD [ft]	Positional Uncertainty Model	Log Name/Comment	Wellbore
22.00	740.00	NaviTrak (Standard)	BHI MW/NAVITRAK (STD) 13.5" HOLE <238-740>	KODAK 10 AWB
740.00	7446.00	NaviTrak (Standard)	BHI MWD/NAVITRAK (STD) 8.75" HOLE <822-7446>	KODAK 10 AWB
7446.00	16849.00	NaviTrak (Standard)	BHI MWD/NAVITRAK (STD) 6.125" HOLE <7534-16849>	KODAK 10 AWB
16849.00	16905.00	Blind Drilling (std)	Projection to bit	KODAK 10 AWB



Actual Wellpath Report

KODAK 10 AWP

Page 8 of 8



REFERENCE WELLPATH IDENTIFICATION

Operator	EXTRACTION OIL & GAS	Slot	SLOT#06 KODAK 10 (1341'FNL & 1042'FWL, SEC.27)
Area	COLORADO	Well	KODAK 10
Field	WELD COUNTY (NAD83/TRUE NORTH)	Wellbore	KODAK 10 AWB
Facility	SEC.27-T06N-R67W		

WELLPATH COMMENTS

MD [ft]	Inclination [°]	Azimuth [°]	TVD [ft]	Comment
238.00	2.000	155.530	237.96	FIRST BHI MWD SURVEY
7482.00	87.765	271.361	6962.44	CROSSED 460' SETBACK
16849.00	90.680	269.410	6960.65	LAST BHI MWD SURVEY
16905.00	90.680	269.410	6959.99	PROJECTION TO BIT