

**T10N, R57W, 6th P.M.**

2006, Alum. Cap,  
0.9' Below Ground  
Lat: 40.860797"  
Long: 103.785433"

2006, Alum. Cap,  
0.8' Below Ground  
Lat: 40.860836"  
Long: 103.775861"

1917, Brass Cap,  
1.2' High  
Lat: 40.860800"  
Long: 103.766292"

N89°39'33"E - 2648.48' (Meas.)

S89°46'18"E - 2647.47' (Meas.)

**HORSETAIL #08B-1742**

Elev. Ungraded Ground = 4892.1'

N00°55'43"W - 2661.06' (Meas.)

S01°10'46"E - 2621.72' (Meas.)

2006, Alum. Cap,  
0.1' Below Ground  
Lat: 40.853497"  
Long: 103.785283"

1917, Brass Cap,  
1.6' High  
Lat: 40.853608"  
Long: 103.766106"

NOTE:  
THE PROPOSED TARGET BOTTOM HOLE FOR  
THIS WELL IS LOCATED IN THE SW 1/4 SE  
1/4 OF SECTION 17, T10N, R57W, 6th P.M.,  
AT 100' FSL 2310' FEL. IT BEARS  
S01°07'20"W 10198.42' FROM THE PROPOSED  
WELLHEAD.

N01°04'20"W - 2659.64' (Meas.)

S01°00'42"E - 2662.95' (Meas.)

1917, Brass Cap,  
0.4' High  
Lat: 40.846200"  
Long: 103.785111"

1917, Brass Cap,  
0.1' High  
Lat: 40.846250"  
Long: 103.775522"

1917, Brass Cap,  
0.5' High  
Lat: 40.846303"  
Long: 103.765944"

S89°33'26"W - 2653.00' (Meas.)

N89°32'55"E - 2651.12' (Meas.)



Target Bottom Hole

**LEGEND:**

└─┘ = 90° SYMBOL

● = PROPOSED WELLHEAD.

▲ = SECTION CORNERS LOCATED.

○ = TARGET BOTTOM HOLE.

PDOP = 2.4

**NAD 83 (SURFACE LOCATION)**

LATITUDE = 40°51'35.72" (40.859922)  
LONGITUDE = 103°46'23.93" (103.773314)

**NAD 27 (SURFACE LOCATION)**

LATITUDE = 40°51'35.77" (40.859936)  
LONGITUDE = 103°46'22.13" (103.772814)

**WHITING OIL & GAS CORP.**

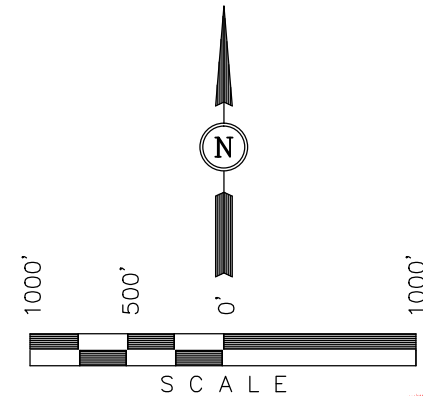
Well location, HORSETAIL #08B-1742 (SURFACE LOCATION), located as shown in the NW 1/4 NE 1/4 of Section 8, T10N, R57W, 6th P.M., Weld County, Colorado.

**BASIS OF ELEVATION**

SPOT ELEVATION LOCATED AT THE NORTHEAST CORNER OF SECTION 15, T9N, R58W, 6th P.M. TAKEN FROM THE GATEHOOK SPRING, QUADRANGLE, COLORADO, WELD COUNTY, 7.5 MINUTE QUAD (TOPOGRAPHIC MAP) PUBLISHED BY THE UNITED STATES DEPARTMENT OF THE INTERIOR, GEOLOGICAL SURVEY. SAID ELEVATION IS MARKED AS BEING 4679 FEET.

**BASIS OF BEARINGS**

BASIS OF BEARINGS IS A G.P.S. OBSERVATION.



**CERTIFICATION**

THIS IS TO CERTIFY THAT THE ABOVE PLAT WAS PREPARED FROM FIELD NOTES OF ACTUAL SURVEYS MADE BY ME OR UNDER MY SUPERVISION AND THAT THE SAME ARE TRUE AND CORRECT TO THE BEST OF MY KNOWLEDGE AND BELIEF.

REGISTERED LAND SURVEYOR  
REGISTRATION NO. 28285  
STATE OF COLORADO 02-13-15

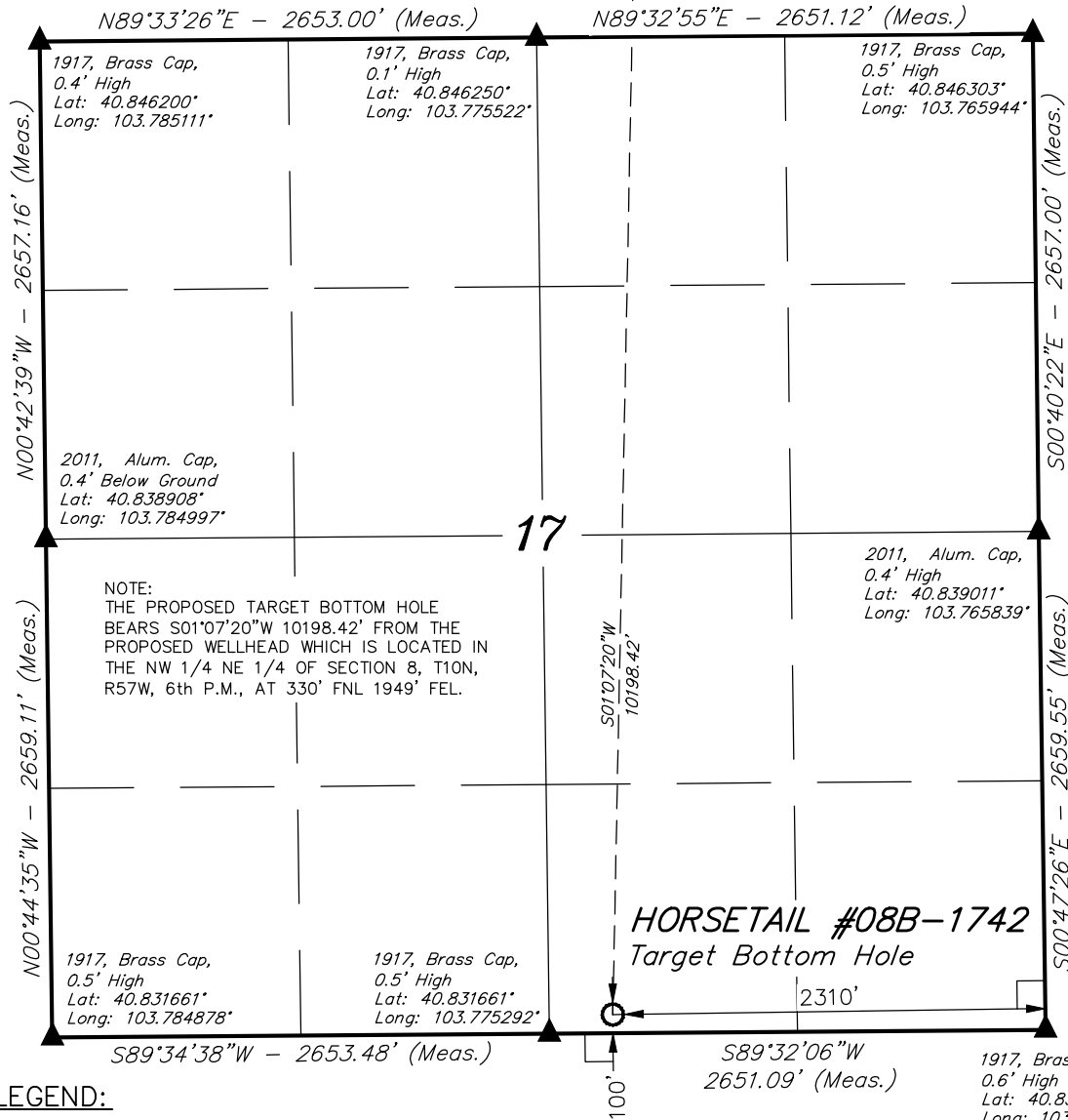
REV: 02-13-15 K.B.

**UINTAH ENGINEERING & LAND SURVEYING**  
85 SOUTH 200 EAST - VERNAL, UTAH 84078  
(435) 789-1017

SCALE 1" = 1000'	DATE SURVEYED: 12-09-14	DATE DRAWN: 12-31-14
PARTY DALLAS NIELSEN J.S. K.B.	REFERENCES G.L.O. PLAT	
WEATHER COLD	FILE WHITING OIL & GAS CORP.	

T10N, R57W, 6th P.M.

● Surface Location



LEGEND:

- └─┘ = 90° SYMBOL
- = PROPOSED WELLHEAD.
- ▲ = SECTION CORNERS LOCATED.
- = TARGET BOTTOM HOLE.

NAD 83 (TARGET BOTTOM HOLE)	
LATITUDE	= 40°49'54.99" (40.831942)
LONGITUDE	= 103°46'26.63" (103.774064)
NAD 27 (TARGET BOTTOM HOLE)	
LATITUDE	= 40°49'55.04" (40.831956)
LONGITUDE	= 103°46'24.83" (103.773564)

WHITING OIL & GAS CORP.

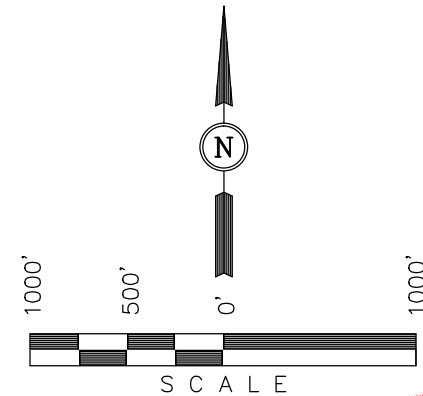
Well location, HORSETAIL #08B-1742 (TARGET BOTTOM HOLE), located as shown in the SW 1/4 SE 1/4 of Section 17, T10N, R57W, 6th P.M., Weld County, Colorado.

BASIS OF ELEVATION

SPOT ELEVATION LOCATED AT THE NORTHEAST CORNER OF SECTION 15, T9N, R58W, 6th P.M. TAKEN FROM THE GATEHOOK SPRING, QUADRANGLE, COLORADO, WELD COUNTY, 7.5 MINUTE QUAD (TOPOGRAPHIC MAP) PUBLISHED BY THE UNITED STATES DEPARTMENT OF THE INTERIOR, GEOLOGICAL SURVEY. SAID ELEVATION IS MARKED AS BEING 4679 FEET.

BASIS OF BEARINGS

BASIS OF BEARINGS IS A G.P.S. OBSERVATION.



CERTIFICATION

THIS IS TO CERTIFY THAT THE ABOVE PLAT WAS PREPARED FROM FIELD NOTES OF ACTUAL SURVEYS MADE BY ME OR UNDER MY SUPERVISION AND THAT THE SAME ARE TRUE AND CORRECT TO THE BEST OF MY KNOWLEDGE AND BELIEF.

REGISTERED LAND SURVEYOR  
REGISTRATION NO. 28285  
STATE OF COLORADO  
02-13-15

REV: 02-13-15 K.B.

UINTAH ENGINEERING & LAND SURVEYING  
85 SOUTH 200 EAST - VERNAL, UTAH 84078  
(435) 789-1017

SCALE 1" = 1000'	DATE SURVEYED: 12-09-14	DATE DRAWN: 12-31-14
PARTY DALLAS NIELSEN J.S. K.B.	REFERENCES G.L.O. PLAT	
WEATHER COLD	FILE WHITING OIL & GAS CORP.	