

Verdad Oil & Gas Corporation

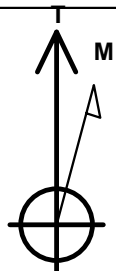
Well Name: **Cervi 03N-63W-26-1N**

Surface Location: Cervi 03N-63W-26-1N Sec.26-T3N-R63W
North American Datum 1983 , US State Plane 1983 , Colorado Northern Zone
Ground Elevation: 4712.0

+N/-S	+E/-W	Northing	Easting	Latitude	Longitude	Slot
0.0	0.0	1313793.55	3307290.66	40.189528	-104.400050	
RKB - 16.2' WELL @ 4728.2ft (RKB - 16.2')						

WELLBORE TARGET DETAILS

Name	TVD	+N/-S	+E/-W	Shape
460' Setback BHL	1.0	4691.5	-1300.0	Polygon
460' Setback SHL	1.0	300.0	-1300.0	Polygon
Sectionline	1.0	-160.0	-1300.0	Polygon
SHL 160'FSL & 1317'FEL	1.0	0.0	0.0	Point
BHL 460'FNL & 1815'FEL	6466.2	4691.5	-507.8	Point

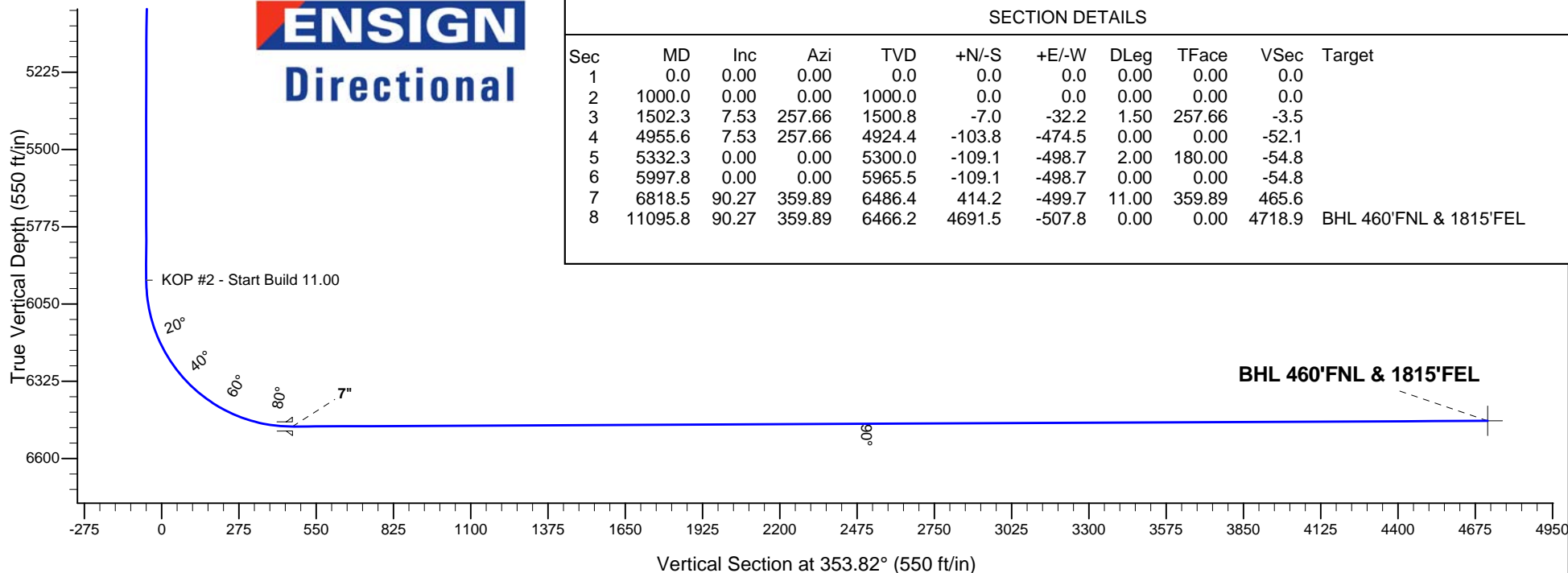
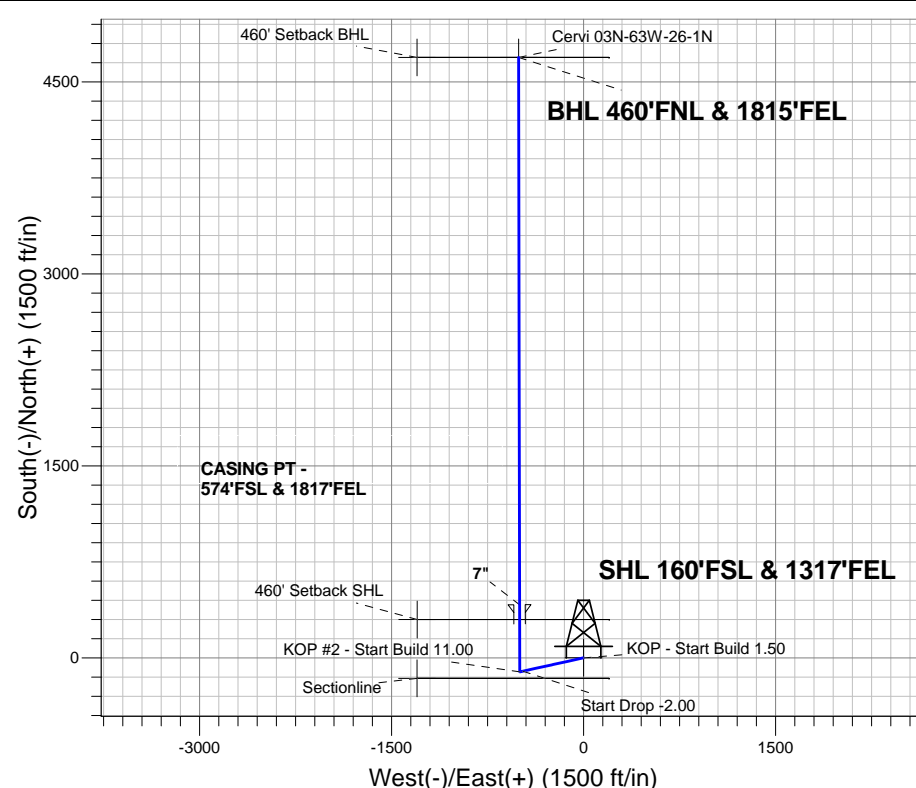


Azimuths to True North
Magnetic North: 8.17°
Magnetic Field
Strength: 52686.1snT
Dip Angle: 66.82°
Date: 12/31/2014
Model: IGRF2010

Cervi 03N-63W-26-1N Sec.26-T3N-R63W
Cervi 03N-63W-26-1N
Plan #3 (3-26-15)

ANNOTATIONS

TVD	MD	Annotation
1000.0	1000.0	KOP - Start Build 1.50
4924.4	4955.6	Start Drop -2.00
5965.5	5997.8	KOP #2 - Start Build 11.00
6466.2	11095.8	TD at 11095.8



ENSIGN
Directional

SECTION DETAILS

Sec	MD	Inc	Azi	TVD	+N/-S	+E/-W	DLeg	TFace	VSec	Target
1	0.0	0.00	0.00	0.0	0.0	0.0	0.00	0.00	0.0	
2	1000.0	0.00	0.00	1000.0	0.0	0.0	0.00	0.00	0.0	
3	1502.3	7.53	257.66	1500.8	-7.0	-32.2	1.50	257.66	-3.5	
4	4955.6	7.53	257.66	4924.4	-103.8	-474.5	0.00	0.00	-52.1	
5	5332.3	0.00	0.00	5300.0	-109.1	-498.7	2.00	180.00	-54.8	
6	5997.8	0.00	0.00	5965.5	-109.1	-498.7	0.00	0.00	-54.8	
7	6818.5	90.27	359.89	6486.4	414.2	-499.7	11.00	359.89	465.6	
8	11095.8	90.27	359.89	6466.2	4691.5	-507.8	0.00	0.00	4718.9	BHL 460'FNL & 1815'FEL



Verdad Oil & Gas Corporation

SEC.26-T3N-R63W

Cervi 03N-63W-26-1N Sec.26-T3N-R63W

Cervi 03N-63W-26-1N

Wellbore #1

Plan: Plan #3 (3-26-15)

Standard Planning Report

26 March, 2015

Database:	landmark	Local Co-ordinate Reference:	Well Cervi 03N-63W-26-1N
Company:	Verdad Oil & Gas Corporation	TVD Reference:	WELL @ 4728.2ft (RKB - 16.2')
Project:	SEC.26-T3N-R63W	MD Reference:	WELL @ 4728.2ft (RKB - 16.2')
Site:	Cervi 03N-63W-26-1N Sec.26-T3N-R63W	North Reference:	True
Well:	Cervi 03N-63W-26-1N	Survey Calculation Method:	Minimum Curvature
Wellbore:	Wellbore #1		
Design:	Plan #3 (3-26-15)		

Project	SEC.26-T3N-R63W, Weld County, Colorado		
Map System:	US State Plane 1983	System Datum:	Mean Sea Level
Geo Datum:	North American Datum 1983		Using Well Reference Point
Map Zone:	Colorado Northern Zone		Using geodetic scale factor

Site		Cervi 03N-63W-26-1N Sec.26-T3N-R63W									
Site Position:				Northing:		1,313,793.58 ft		Latitude:		40.189528	
From:		Lat/Long		Easting:		3,307,290.66 ft		Longitude:		-104.400050	
Position Uncertainty:		0.0 ft		Slot Radius:		"		Grid Convergence:		0.71 °	

Well	Cervi 03N-63W-26-1N					
Well Position	+N/-S	0.0 ft	Northing:	1,313,793.55 ft	Latitude:	40.189528
	+E/-W	0.0 ft	Easting:	3,307,290.66 ft	Longitude:	-104.400050
Position Uncertainty		0.0 ft	Wellhead Elevation:	ft	Ground Level:	4,712.0 ft

Wellbore #1					
Magnetics	Model Name	Sample Date	Declination (°)	Dip Angle (°)	Field Strength (nT)
	IGRF2010	12/31/2014	8.17	66.82	52,686

Design	Plan #3 (3-26-15)			
Audit Notes:				
Version:	Phase:	PROTOTYPE	Tie On Depth:	0.0
Vertical Section:	Depth From (TVD) (ft)	+N/-S (ft)	+E/-W (ft)	Direction (°)
	0.0	0.0	0.0	353.82

Plan Sections										
Measured Depth (ft)	Inclination (°)	Azimuth (°)	Vertical Depth (ft)	+N/-S (ft)	+E/-W (ft)	Dogleg Rate (°/100ft)	Build Rate (°/100ft)	Turn Rate (°/100ft)	TFO (°)	Target
0.0	0.00	0.00	0.0	0.0	0.0	0.00	0.00	0.00	0.00	
1,000.0	0.00	0.00	1,000.0	0.0	0.0	0.00	0.00	0.00	0.00	
1,502.3	7.53	257.66	1,500.8	-7.0	-32.2	1.50	1.50	0.00	257.66	
4,955.6	7.53	257.66	4,924.4	-103.8	-474.5	0.00	0.00	0.00	0.00	
5,332.3	0.00	0.00	5,300.0	-109.1	-498.7	2.00	-2.00	0.00	180.00	
5,997.8	0.00	0.00	5,965.5	-109.1	-498.7	0.00	0.00	0.00	0.00	
6,818.5	90.27	359.89	6,486.4	414.2	-499.7	11.00	11.00	0.00	359.89	
11,095.8	90.27	359.89	6,466.2	4,691.5	-507.8	0.00	0.00	0.00	0.00	BHL 460'FNL & 181

Database: landmark
Company: Verdad Oil & Gas Corporation
Project: SEC.26-T3N-R63W
Site: Cervi 03N-63W-26-1N Sec.26-T3N-R63W
Well: Cervi 03N-63W-26-1N
Wellbore: Wellbore #1
Design: Plan #3 (3-26-15)

Local Co-ordinate Reference: Well Cervi 03N-63W-26-1N
TVD Reference: WELL @ 4728.2ft (RKB - 16.2')
MD Reference: WELL @ 4728.2ft (RKB - 16.2')
North Reference: True
Survey Calculation Method: Minimum Curvature

Planned Survey									
Measured Depth (ft)	Inclination (°)	Azimuth (°)	Vertical Depth (ft)	+N/-S (ft)	+E/-W (ft)	Vertical Section (ft)	Dogleg Rate (°/100ft)	Build Rate (°/100ft)	Turn Rate (°/100ft)
0.0	0.00	0.00	0.0	0.0	0.0	0.0	0.00	0.00	0.00
100.0	0.00	0.00	100.0	0.0	0.0	0.0	0.00	0.00	0.00
200.0	0.00	0.00	200.0	0.0	0.0	0.0	0.00	0.00	0.00
300.0	0.00	0.00	300.0	0.0	0.0	0.0	0.00	0.00	0.00
400.0	0.00	0.00	400.0	0.0	0.0	0.0	0.00	0.00	0.00
500.0	0.00	0.00	500.0	0.0	0.0	0.0	0.00	0.00	0.00
600.0	0.00	0.00	600.0	0.0	0.0	0.0	0.00	0.00	0.00
700.0	0.00	0.00	700.0	0.0	0.0	0.0	0.00	0.00	0.00
800.0	0.00	0.00	800.0	0.0	0.0	0.0	0.00	0.00	0.00
900.0	0.00	0.00	900.0	0.0	0.0	0.0	0.00	0.00	0.00
1,000.0	0.00	0.00	1,000.0	0.0	0.0	0.0	0.00	0.00	0.00
KOP - Start Build 1.50									
1,100.0	1.50	257.66	1,100.0	-0.3	-1.3	-0.1	1.50	1.50	0.00
1,200.0	3.00	257.66	1,199.9	-1.1	-5.1	-0.6	1.50	1.50	0.00
1,300.0	4.50	257.66	1,299.7	-2.5	-11.5	-1.3	1.50	1.50	0.00
1,400.0	6.00	257.66	1,399.3	-4.5	-20.4	-2.2	1.50	1.50	0.00
1,500.0	7.50	257.66	1,498.6	-7.0	-31.9	-3.5	1.50	1.50	0.00
1,502.3	7.53	257.66	1,500.8	-7.0	-32.2	-3.5	1.50	1.50	0.00
1,600.0	7.53	257.66	1,597.7	-9.8	-44.7	-4.9	0.00	0.00	0.00
1,700.0	7.53	257.66	1,696.8	-12.6	-57.5	-6.3	0.00	0.00	0.00
1,800.0	7.53	257.66	1,796.0	-15.4	-70.3	-7.7	0.00	0.00	0.00
1,900.0	7.53	257.66	1,895.1	-18.2	-83.2	-9.1	0.00	0.00	0.00
2,000.0	7.53	257.66	1,994.3	-21.0	-96.0	-10.5	0.00	0.00	0.00
2,100.0	7.53	257.66	2,093.4	-23.8	-108.8	-12.0	0.00	0.00	0.00
2,200.0	7.53	257.66	2,192.5	-26.6	-121.6	-13.4	0.00	0.00	0.00
2,300.0	7.53	257.66	2,291.7	-29.4	-134.4	-14.8	0.00	0.00	0.00
2,400.0	7.53	257.66	2,390.8	-32.2	-147.2	-16.2	0.00	0.00	0.00
2,500.0	7.53	257.66	2,489.9	-35.0	-160.0	-17.6	0.00	0.00	0.00
2,600.0	7.53	257.66	2,589.1	-37.8	-172.8	-19.0	0.00	0.00	0.00
2,700.0	7.53	257.66	2,688.2	-40.6	-185.6	-20.4	0.00	0.00	0.00
2,800.0	7.53	257.66	2,787.4	-43.4	-198.4	-21.8	0.00	0.00	0.00
2,900.0	7.53	257.66	2,886.5	-46.2	-211.2	-23.2	0.00	0.00	0.00
3,000.0	7.53	257.66	2,985.6	-49.0	-224.1	-24.6	0.00	0.00	0.00
3,100.0	7.53	257.66	3,084.8	-51.8	-236.9	-26.0	0.00	0.00	0.00
3,200.0	7.53	257.66	3,183.9	-54.6	-249.7	-27.4	0.00	0.00	0.00
3,300.0	7.53	257.66	3,283.0	-57.4	-262.5	-28.8	0.00	0.00	0.00
3,400.0	7.53	257.66	3,382.2	-60.2	-275.3	-30.2	0.00	0.00	0.00
3,500.0	7.53	257.66	3,481.3	-63.0	-288.1	-31.7	0.00	0.00	0.00
3,600.0	7.53	257.66	3,580.4	-65.8	-300.9	-33.1	0.00	0.00	0.00
3,700.0	7.53	257.66	3,679.6	-68.6	-313.7	-34.5	0.00	0.00	0.00
3,800.0	7.53	257.66	3,778.7	-71.4	-326.5	-35.9	0.00	0.00	0.00
3,900.0	7.53	257.66	3,877.9	-74.2	-339.3	-37.3	0.00	0.00	0.00
4,000.0	7.53	257.66	3,977.0	-77.0	-352.1	-38.7	0.00	0.00	0.00
4,100.0	7.53	257.66	4,076.1	-79.8	-364.9	-40.1	0.00	0.00	0.00
4,200.0	7.53	257.66	4,175.3	-82.6	-377.8	-41.5	0.00	0.00	0.00
4,300.0	7.53	257.66	4,274.4	-85.4	-390.6	-42.9	0.00	0.00	0.00
4,400.0	7.53	257.66	4,373.5	-88.2	-403.4	-44.3	0.00	0.00	0.00
4,500.0	7.53	257.66	4,472.7	-91.0	-416.2	-45.7	0.00	0.00	0.00
4,600.0	7.53	257.66	4,571.8	-93.8	-429.0	-47.1	0.00	0.00	0.00
4,700.0	7.53	257.66	4,670.9	-96.7	-441.8	-48.5	0.00	0.00	0.00
4,800.0	7.53	257.66	4,770.1	-99.5	-454.6	-50.0	0.00	0.00	0.00
4,900.0	7.53	257.66	4,869.2	-102.3	-467.4	-51.4	0.00	0.00	0.00
4,955.6	7.53	257.66	4,924.3	-103.8	-474.5	-52.1	0.00	0.00	0.00
Start Drop -2.00									

Database: landmark
Company: Verdad Oil & Gas Corporation
Project: SEC.26-T3N-R63W
Site: Cervi 03N-63W-26-1N Sec.26-T3N-R63W
Well: Cervi 03N-63W-26-1N
Wellbore: Wellbore #1
Design: Plan #3 (3-26-15)

Local Co-ordinate Reference: Well Cervi 03N-63W-26-1N
TVD Reference: WELL @ 4728.2ft (RKB - 16.2')
MD Reference: WELL @ 4728.2ft (RKB - 16.2')
North Reference: True
Survey Calculation Method: Minimum Curvature

Planned Survey									
Measured Depth (ft)	Inclination (°)	Azimuth (°)	Vertical Depth (ft)	+N/-S (ft)	+E/-W (ft)	Vertical Section (ft)	Dogleg Rate (°/100ft)	Build Rate (°/100ft)	Turn Rate (°/100ft)
5,000.0	6.65	257.66	4,968.4	-105.0	-479.9	-52.7	2.00	-2.00	0.00
5,100.0	4.65	257.66	5,067.9	-107.1	-489.5	-53.8	2.00	-2.00	0.00
5,200.0	2.65	257.66	5,167.7	-108.4	-495.7	-54.5	2.00	-2.00	0.00
5,300.0	0.65	257.66	5,267.7	-109.1	-498.5	-54.8	2.00	-2.00	0.00
5,332.3	0.00	0.00	5,300.0	-109.1	-498.7	-54.8	2.00	-2.00	0.00
5,400.0	0.00	0.00	5,367.7	-109.1	-498.7	-54.8	0.00	0.00	0.00
5,500.0	0.00	0.00	5,467.7	-109.1	-498.7	-54.8	0.00	0.00	0.00
5,600.0	0.00	0.00	5,567.7	-109.1	-498.7	-54.8	0.00	0.00	0.00
5,700.0	0.00	0.00	5,667.7	-109.1	-498.7	-54.8	0.00	0.00	0.00
5,800.0	0.00	0.00	5,767.7	-109.1	-498.7	-54.8	0.00	0.00	0.00
5,900.0	0.00	0.00	5,867.7	-109.1	-498.7	-54.8	0.00	0.00	0.00
5,997.8	0.00	0.00	5,965.5	-109.1	-498.7	-54.8	0.00	0.00	0.00
KOP #2 - Start Build 11.00									
6,000.0	0.24	359.89	5,967.7	-109.1	-498.7	-54.8	10.83	10.83	0.00
6,100.0	11.24	359.89	6,067.0	-99.1	-498.7	-44.9	11.00	11.00	0.00
6,200.0	22.24	359.89	6,162.6	-70.4	-498.8	-16.3	11.00	11.00	0.00
6,300.0	33.24	359.89	6,251.0	-23.9	-498.9	29.9	11.00	11.00	0.00
6,400.0	44.24	359.89	6,328.9	38.6	-499.0	92.1	11.00	11.00	0.00
6,500.0	55.24	359.89	6,393.4	114.8	-499.1	167.8	11.00	11.00	0.00
6,600.0	66.24	359.89	6,442.2	201.9	-499.3	254.5	11.00	11.00	0.00
6,700.0	77.24	359.89	6,473.5	296.7	-499.5	348.7	11.00	11.00	0.00
6,800.0	88.24	359.89	6,486.1	395.8	-499.7	447.2	11.00	11.00	0.00
6,818.5	90.27	359.89	6,486.4	414.3	-499.7	465.6	10.98	10.98	0.00
7"									
6,900.0	90.27	359.89	6,486.0	495.8	-499.9	546.7	0.00	0.00	0.00
7,000.0	90.27	359.89	6,485.5	595.8	-500.0	646.1	0.00	0.00	0.00
7,100.0	90.27	359.89	6,485.0	695.8	-500.2	745.5	0.00	0.00	0.00
7,200.0	90.27	359.89	6,484.6	795.7	-500.4	845.0	0.00	0.00	0.00
7,300.0	90.27	359.89	6,484.1	895.7	-500.6	944.4	0.00	0.00	0.00
7,400.0	90.27	359.89	6,483.6	995.7	-500.8	1,043.9	0.00	0.00	0.00
7,500.0	90.27	359.89	6,483.1	1,095.7	-501.0	1,143.3	0.00	0.00	0.00
7,600.0	90.27	359.89	6,482.7	1,195.7	-501.2	1,242.7	0.00	0.00	0.00
7,700.0	90.27	359.89	6,482.2	1,295.7	-501.4	1,342.2	0.00	0.00	0.00
7,800.0	90.27	359.89	6,481.7	1,395.7	-501.6	1,441.6	0.00	0.00	0.00
7,900.0	90.27	359.89	6,481.3	1,495.7	-501.8	1,541.1	0.00	0.00	0.00
8,000.0	90.27	359.89	6,480.8	1,595.7	-501.9	1,640.5	0.00	0.00	0.00
8,100.0	90.27	359.89	6,480.3	1,695.7	-502.1	1,739.9	0.00	0.00	0.00
8,200.0	90.27	359.89	6,479.8	1,795.7	-502.3	1,839.4	0.00	0.00	0.00
8,300.0	90.27	359.89	6,479.4	1,895.7	-502.5	1,938.8	0.00	0.00	0.00
8,400.0	90.27	359.89	6,478.9	1,995.7	-502.7	2,038.2	0.00	0.00	0.00
8,500.0	90.27	359.89	6,478.4	2,095.7	-502.9	2,137.7	0.00	0.00	0.00
8,600.0	90.27	359.89	6,478.0	2,195.7	-503.1	2,237.1	0.00	0.00	0.00
8,700.0	90.27	359.89	6,477.5	2,295.7	-503.3	2,336.6	0.00	0.00	0.00
8,800.0	90.27	359.89	6,477.0	2,395.7	-503.5	2,436.0	0.00	0.00	0.00
8,900.0	90.27	359.89	6,476.5	2,495.7	-503.7	2,535.4	0.00	0.00	0.00
9,000.0	90.27	359.89	6,476.1	2,595.7	-503.8	2,634.9	0.00	0.00	0.00
9,100.0	90.27	359.89	6,475.6	2,695.7	-504.0	2,734.3	0.00	0.00	0.00
9,200.0	90.27	359.89	6,475.1	2,795.7	-504.2	2,833.7	0.00	0.00	0.00
9,300.0	90.27	359.89	6,474.7	2,895.7	-504.4	2,933.2	0.00	0.00	0.00
9,400.0	90.27	359.89	6,474.2	2,995.7	-504.6	3,032.6	0.00	0.00	0.00
9,500.0	90.27	359.89	6,473.7	3,095.7	-504.8	3,132.1	0.00	0.00	0.00
9,600.0	90.27	359.89	6,473.2	3,195.7	-505.0	3,231.5	0.00	0.00	0.00
9,700.0	90.27	359.89	6,472.8	3,295.7	-505.2	3,330.9	0.00	0.00	0.00
9,800.0	90.27	359.89	6,472.3	3,395.7	-505.4	3,430.4	0.00	0.00	0.00

Database: landmark
Company: Verdad Oil & Gas Corporation
Project: SEC.26-T3N-R63W
Site: Cervi 03N-63W-26-1N Sec.26-T3N-R63W
Well: Cervi 03N-63W-26-1N
Wellbore: Wellbore #1
Design: Plan #3 (3-26-15)

Local Co-ordinate Reference: Well Cervi 03N-63W-26-1N
TVD Reference: WELL @ 4728.2ft (RKB - 16.2')
MD Reference: WELL @ 4728.2ft (RKB - 16.2')
North Reference: True
Survey Calculation Method: Minimum Curvature

Planned Survey										
Measured Depth (ft)	Inclination (°)	Azimuth (°)	Vertical Depth (ft)	+N/-S (ft)	+E/-W (ft)	Vertical Section (ft)	Dogleg Rate (°/100ft)	Build Rate (°/100ft)	Turn Rate (°/100ft)	
9,900.0	90.27	359.89	6,471.8	3,495.7	-505.6	3,529.8	0.00	0.00	0.00	
10,000.0	90.27	359.89	6,471.4	3,595.7	-505.7	3,629.3	0.00	0.00	0.00	
10,100.0	90.27	359.89	6,470.9	3,695.7	-505.9	3,728.7	0.00	0.00	0.00	
10,200.0	90.27	359.89	6,470.4	3,795.7	-506.1	3,828.1	0.00	0.00	0.00	
10,300.0	90.27	359.89	6,469.9	3,895.7	-506.3	3,927.6	0.00	0.00	0.00	
10,400.0	90.27	359.89	6,469.5	3,995.7	-506.5	4,027.0	0.00	0.00	0.00	
10,500.0	90.27	359.89	6,469.0	4,095.7	-506.7	4,126.4	0.00	0.00	0.00	
10,600.0	90.27	359.89	6,468.5	4,195.7	-506.9	4,225.9	0.00	0.00	0.00	
10,700.0	90.27	359.89	6,468.1	4,295.7	-507.1	4,325.3	0.00	0.00	0.00	
10,800.0	90.27	359.89	6,467.6	4,395.7	-507.3	4,424.8	0.00	0.00	0.00	
10,900.0	90.27	359.89	6,467.1	4,495.7	-507.5	4,524.2	0.00	0.00	0.00	
11,000.0	90.27	359.89	6,466.7	4,595.7	-507.6	4,623.6	0.00	0.00	0.00	
11,095.8	90.27	359.89	6,466.2	4,691.5	-507.8	4,718.9	0.00	0.00	0.00	

Targets										
Target Name	Dip Angle (°)	Dip Dir. (°)	TVD (ft)	+N/-S (ft)	+E/-W (ft)	Northing (ft)	Easting (ft)	Latitude	Longitude	
460' Setback BHL	0.00	0.00	1.0	4,691.5	-1,300.0	1,318,468.36	3,305,932.63	40.202406	-104.404704	
- plan misses by 4868.3ft at 1.0ft MD (1.0 TVD, 0.0 N, 0.0 E)										
- Polygon										
Point 1			1.0	0.0	0.0	1,318,468.36	3,305,932.63			
Point 2			1.0	0.0	1,500.0	1,318,486.96	3,307,432.44			
460' Setback SHL	0.00	0.00	1.0	300.0	-1,300.0	1,314,077.39	3,305,987.10	40.190351	-104.404703	
- plan misses by 1334.2ft at 1.0ft MD (1.0 TVD, 0.0 N, 0.0 E)										
- Polygon										
Point 1			1.0	0.0	0.0	1,314,077.39	3,305,987.10			
Point 2			1.0	0.0	1,500.0	1,314,096.00	3,307,486.91			
SHL 160'FSL & 1317'	0.00	0.00	1.0	0.0	0.0	1,313,793.58	3,307,290.66	40.189528	-104.400050	
- plan hits target										
- Point										
BHL 460'FNL & 1815'	0.00	0.00	6,466.2	4,691.5	-507.8	1,318,478.16	3,306,724.70	40.202406	-104.401868	
- plan hits target										
- Point										
Sectionline	0.00	0.00	1.0	-160.0	-1,300.0	1,313,617.46	3,305,992.80	40.189089	-104.404703	
- plan misses by 1309.8ft at 1.0ft MD (1.0 TVD, 0.0 N, 0.0 E)										
- Polygon										
Point 1			1.0	0.0	0.0	1,313,617.46	3,305,992.80			
Point 2			1.0	0.0	1,500.0	1,313,636.06	3,307,492.62			

Casing Points					
Measured Depth (ft)	Vertical Depth (ft)	Name	Casing Diameter (")	Hole Diameter (")	
6,818.5	6,486.4	7"	7	7-1/2	

Database:	landmark	Local Co-ordinate Reference:	Well Cervi 03N-63W-26-1N
Company:	Verdad Oil & Gas Corporation	TVD Reference:	WELL @ 4728.2ft (RKB - 16.2')
Project:	SEC.26-T3N-R63W	MD Reference:	WELL @ 4728.2ft (RKB - 16.2')
Site:	Cervi 03N-63W-26-1N Sec.26-T3N-R63W	North Reference:	True
Well:	Cervi 03N-63W-26-1N	Survey Calculation Method:	Minimum Curvature
Wellbore:	Wellbore #1		
Design:	Plan #3 (3-26-15)		

Plan Annotations				
Measured Depth (ft)	Vertical Depth (ft)	Local Coordinates		Comment
		+N/-S (ft)	+E/-W (ft)	
1,000.0	1,000.0	0.0	0.0	KOP - Start Build 1.50
4,955.6	4,924.4	-7.0	-32.2	Start Drop -2.00
5,997.8	5,965.5	-103.8	-474.5	KOP #2 - Start Build 11.00
11,095.8	6,466.2	-109.1	-498.7	TD at 11095.8