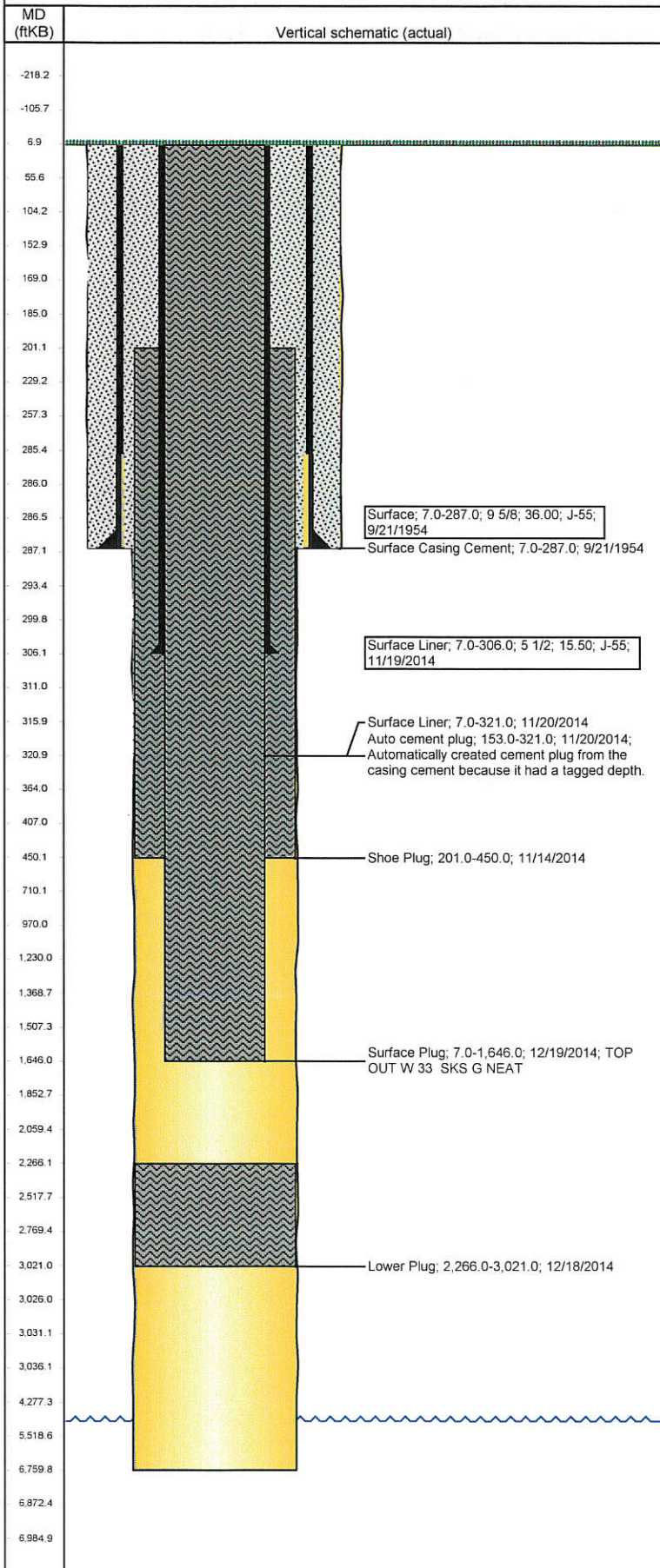


Well Name: GOVT-ADKISSON 1

VERTICAL - ORIGINAL HOLE, 2/27/2015 9:45:42 AM



Well Header

API	Business Unit	District	Well Config
05-123-05669	DJ BASIN	15	VERTICAL
Original KB Elevation (ft)	KB - GL / MSL (ftKB)	Spud Date	P & A Date
4,918.00	7.00	9/21/1954	12/19/2014

Comment
WBI RE-ENTRY P&A FOR HORIZONTAL WELL:
Washington LC13-775
AFE: 200491

MINIMAL DATA FOR WELL ON COGCC

Directions To Well
CO HWY 14 & WCR 105, North to WCR 104, East to WCR 119, North 0.5 mi ,
West 0.2 mi Into

Current PBTD (ftKB)

Surface Location (Congressional)

Quarter 1	Quarter 2	Quarter 3	Quarter 4	Section	Township	Twship N...	Range	Rng E/W Dir
				14	9	N	59	W

Bottom Hole Location

North-South Distance (ft)	From N or S Line	East-West Distance (ft)	From E or W Line

Plug Back Total Depths

Date	Depth (ftKB)	Method	Com

Wellbore Sections

Section Des	Size (in)	Act Top, MD (ftKB)	Act Btm, MD (ftKB)
SURFACE	12 1/4	7.0	287.0
OPENHOLE	7 7/8	287.0	6,760.0

Zone Statuses

Zone Name	Status Date	Status	Fluid Type	Job
NIOBRARA	12/19/2014	P&A	None	HORIZONTAL WELL PREP, 11/5/2014 06:00

Casing Strings

Csg Des	Run Date	OD (in)	Wt/Len (lb/ft)	Grade	Top, MD (ftKB)	MD (ftKB)
Surface	9/21/1954	9 5/8	36.00	J-55	7.0	287.0
Surface Liner	11/19/2014	5 1/2	15.50	J-55	7.0	306.0

Cement

Des	Top (ftKB)	Btm (ftKB)
Surface Casing Cement	7.0	287.0
Shoe Plug	201.0	450.0
Surface Liner	7.0	321.0
Lower Plug	2,266.0	3,021.0
Surface Plug	7.0	1,646.0

Tubing Components

Item Des	OD (in)	Wt (lb/ft)	Grade	Jts	Len (ft)

Perforation Data

Zone	Bch/St g	Entered Shot Total	Top (ftKB)	Btm (ftKB)	Date

Other In Hole

Run Date	Des	OD (in)	Top (ftKB)	Btm (ftKB)

Logs

Date	Type	Top, MD (ftKB)	Btm, MD (ftKB)