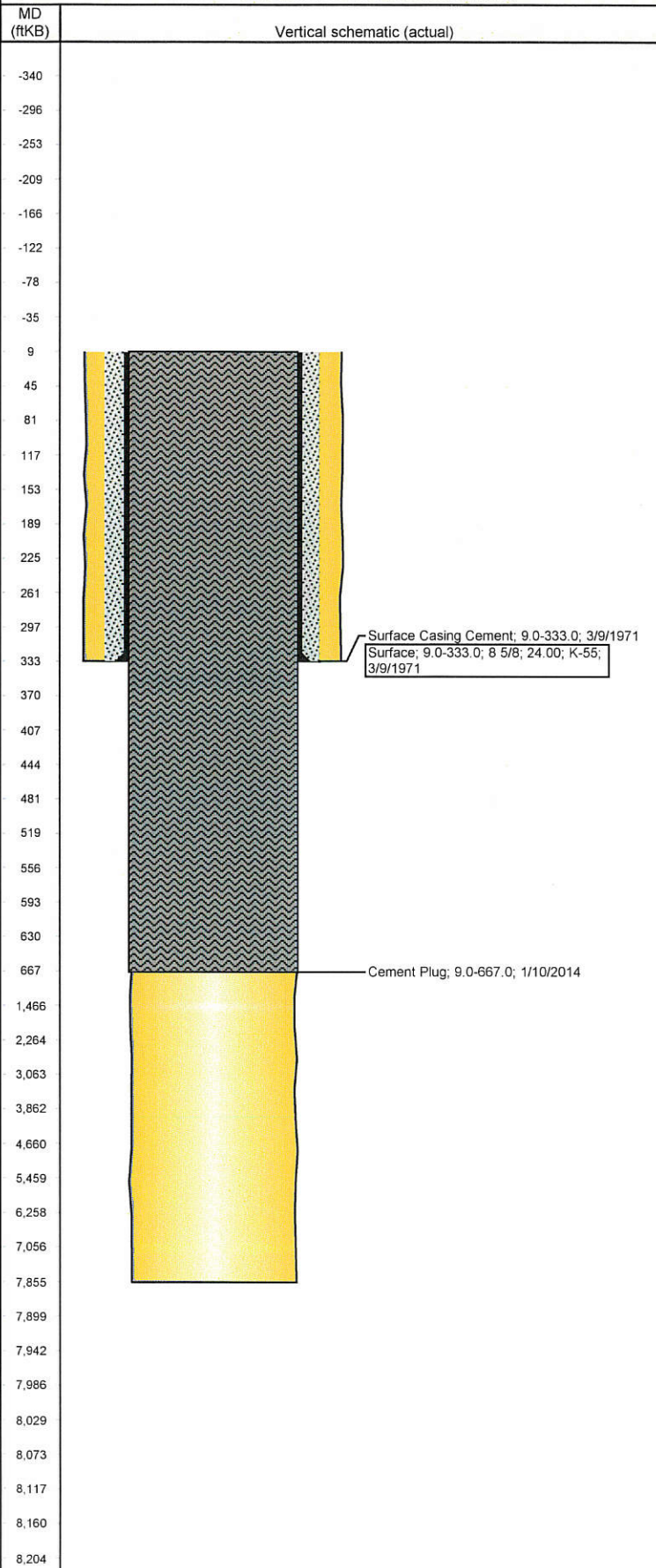


Well Name: UPRR PAN AM 01-61

VERTICAL - ORIGINAL HOLE, 3/31/2015 7:09:42 AM



## Well Header

API	Business Unit	District	Well Config
05-123-07269	DJ BASIN	15	VERTICAL
Original KB Elevation (ft)	KB - GL / MSL (ftKB)	Spud Date	P & A Date
			1/10/2014

## Comment

RE- ENTRY P&A CHARGED TO: FIVE RIVERS K07-63-1HN AFE: 142007

## Directions To Well

WCR 46 & 29. GO NORTH 0.1 MILE, TURN RIGHT GO THOUGH GATE INTO FEEDLOT. HEAD NORTHEAST 0.3 MILES. TURN RIGHT JUST BEFORE CEMENT MOUNTAIN & GO EAST 500', TURN RIGHT & GO SOUTH 500' & TURN RIGHT INTO 2ND CORRAL. LOCATION IN FAR SOUTHEAST CORNER OF CORRAL.

## Congressional Location

Quarter 1	Quarter 2	Quarter 3	Quarter 4	Section	Township	Twnshp N...	Range	Rng E/W Dir
NWSW				9	4	N	66	W

## Bottom Hole Location

North-South Distance (ft)	From N or S Line	East-West Distance (ft)	From E or W Line

## Plug Back Total Depths

Date	Depth (ftKB)	Method	Com

## Wellbore Sections

Section Des	Size (in)	Act Top, MD (ftKB)	Act Btm, MD (ftKB)
SURFACE	12 1/4	9.0	333.0
OPENHOLE	7 7/8	333.0	7,855.0

## Zone Statuses

Zone Name	Status Date	Status	Job

## Casing Strings

### Surface, 333.0ftKB

Casing Description	Run Date	OD (in)	W/Len (l...	Grade	Top, MD (ft...	MD (ftKB)
Surface	3/9/1971	8 5/8	24.00	K-55	9.0	333.0

## Cement

Description	Top Depth (ftKB)	Bottom Depth (ftKB)
Surface Casing Cement	9.0	333.0
Description	Top Depth (ftKB)	Bottom Depth (ftKB)
Cement Plug	9.0	667.0

## Tubing Strings

Tubing Description	Run Date	String...	ID (in)	Wt (lb/ft)	Grade	Len (ft)	Set De...

## Perforation Data

Zone	Bnch/St g	Entered Shot Total	Top (ftKB)	Btm (ftKB)	Date

## Other In Hole

Run Date	Des	OD (in)	Top (ftKB)	Btm (ftKB)

## Logs

Date	Type	Top, MD (ftKB)	Btm, MD (ftKB)