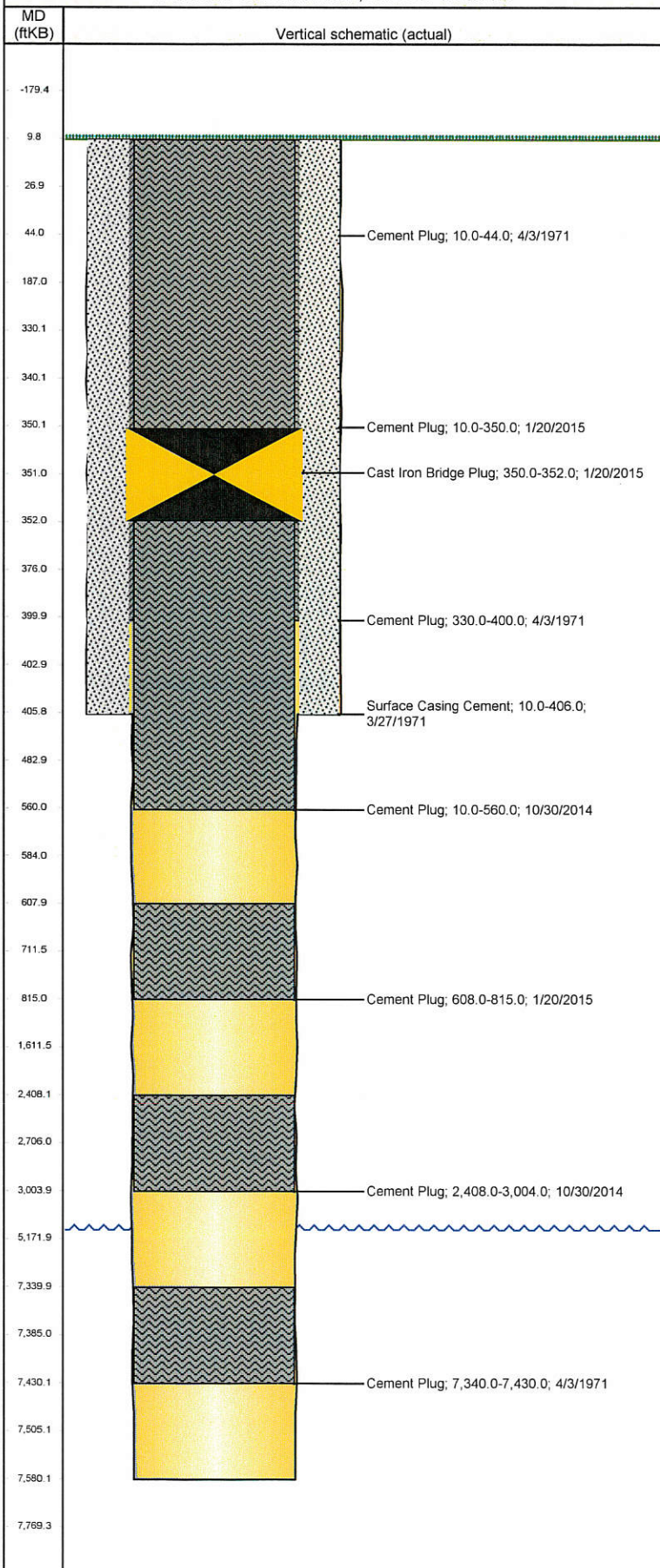


Well Name: UPRR 36 PAN AM B 1

VERTICAL - ORIGINAL HOLE, 2/24/2015 4:29:50 PM



Well Header			
API	Business Unit	District	Well Config
05-123-07280	DJ BASIN	15	VERTICAL
Original KB Elevation (ft)	KB - GL / MSL (ftKB)	Spud Date	P & A Date
4,754.00	10.00	3/27/1971	1/21/2015
Comment			
WBI - RE-ENTRY - MINIMAL DATA			
Directions To Well			
CR 51 AND CR 44 NORTH 1/10 MILE EAST 2/10 MILE INTO			
Current PBTD (ftKB)			
Surface Location (Congressional)			
Quarter 1	Quarter 2	Quarter 3	Quarter 4
Section	Township	Twntshp N...	Range
	4 N		64 W
Bottom Hole Location			
North-South Distance (ft)	From N or S Line	East-West Distance (ft)	From E or W Line
Plug Back Total Depths			
Date	Depth (ftKB)	Method	Com
Wellbore Sections			
Section Des	Size (in)	Act Top, MD (ftKB)	Act Btm, MD (ftKB)
SURFACE	12 1/4	10.0	406.0
OPENHOLE	7 7/8	406.0	7,580.0
Zone Statuses			
Zone Name	Status Date	Status	Fluid Type
Casing Strings			
Csg Des	Run Date	OD (in)	Wt/Len (lb/ft)
Surface	3/27/2971	8 5/8	24.00
			Grade
			Top, MD (ftKB)
			MD (ftKB)
Cement			
Des	Top (ftKB)	Btm (ftKB)	
Surface Casing Cement	10.0	406.0	
Cement Plug	10.0	44.0	
Cement Plug	330.0	400.0	
Cement Plug	7,340.0	7,430.0	
Cement Plug	2,408.0	3,004.0	
Cement Plug	10.0	560.0	
Cement Plug	10.0	350.0	
Cement Plug	608.0	815.0	
Tubing Components			
Item Des	OD (in)	Wt (lb/ft)	Grade
			Jts
			Len (ft)
Perforation Data			
Zone	Bnch/St g	Entered Shot Total	Top (ftKB)
			Btm (ftKB)
			Date
Other In Hole			
Run Date	Des	OD (in)	Top (ftKB)
1/20/2015	Cast Iron Bridge Plug	8 5/8	350.0
			Btm (ftKB)
Logs			
Date	Type	Top, MD (ftKB)	Btm, MD (ftKB)