

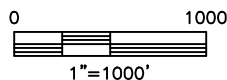
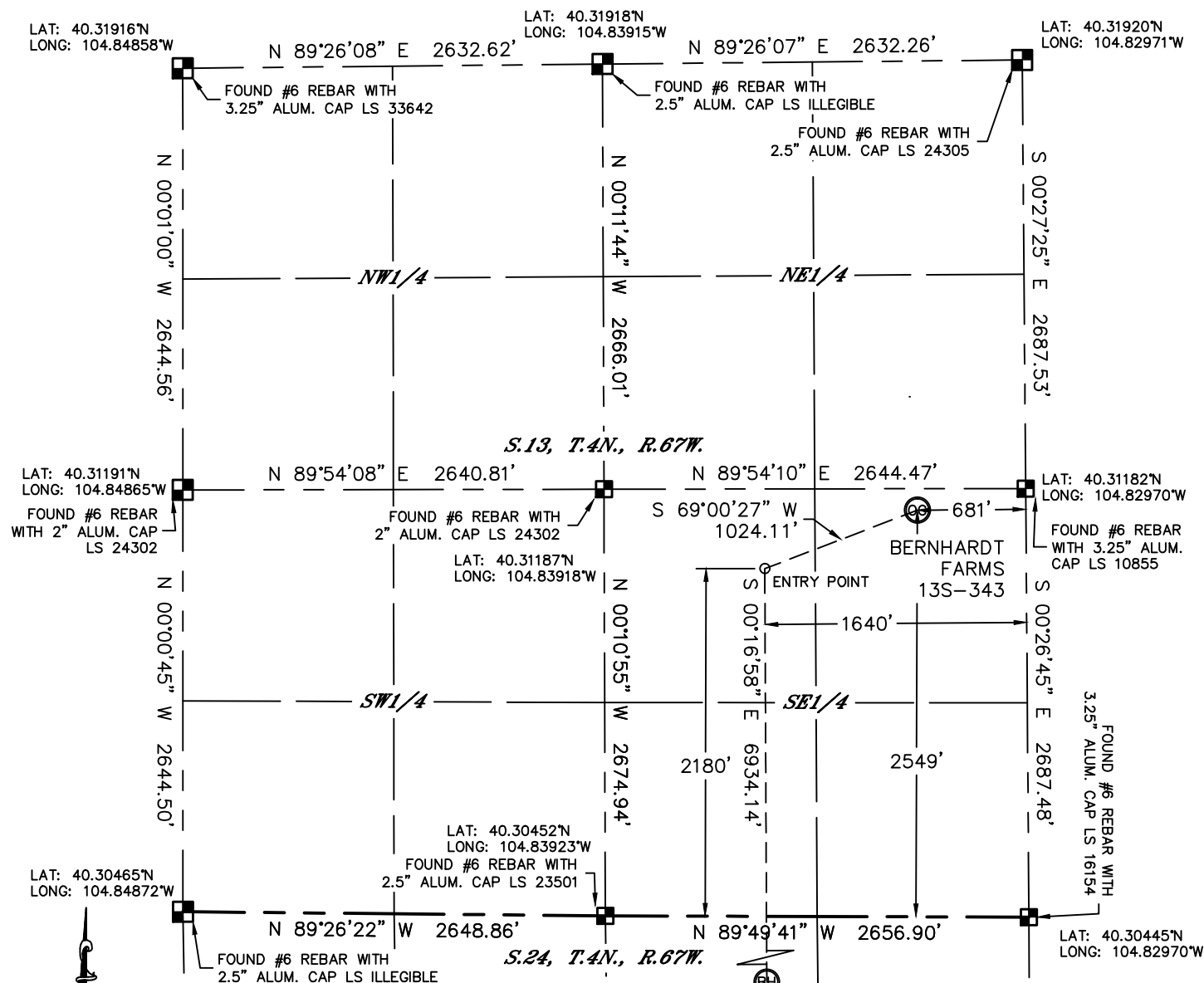


Lat40°, Inc. 1635 Foxtrail Drive, Suite 325 Loveland, CO 970-776-3321

WELL LOCATION CERTIFICATE

THIS MAP DOES NOT REPRESENT A BOUNDARY SURVEY

SECTION: 13
TOWNSHIP: 4N
RANGE: 67W



NOTE:

- 1) Bearings shown are Grid Bearings of the Colorado State Plane Coordinate System, North Zone, North American Datum 1983/2007. The lineal dimensions as contained herein are based upon the "U.S. Survey Foot."
- 2) Ground elevations are based on an observed GPS elevation (NAVD 1988 DATUM).
- 3) IMPROVEMENTS: See LOCATION DRAWING for all visible improvements within 500' of disturbed area.
- 4) SURFACE USE: CROP LAND
- 5) INSTRUMENT OPERATOR: BRIAN ROTTINGHAUS
- 6) NEAREST CULTURAL ITEMS:
BUILDING: 1455' NE
BUILDING UNIT: 1455' NE
HIGH OCCUPANCY BUILDING UNIT: ±4400' NW
DESIGNATED OUTSIDE ACTIVITY AREA: ±4180' NW
PUBLIC ROAD: ±2780' N
ABOVE-GROUND UTILITY: 582' E
RAILROAD: 253' NW
PROPERTY LINE: 456' E

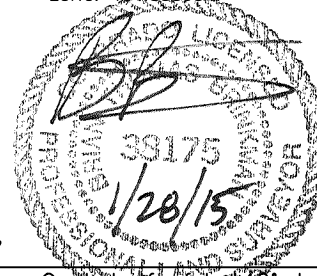
LEGEND

- = ALIQUOT MONUMENT AS DESCRIBED
- = CALCULATED POSITION

SHEET 1 OF 3

Brian T. Brinkman—On Behalf of Lat40°, Inc.
Colorado Licensed Professional
Land Surveyor No. 38175

DATE: rev1/28/2015
PROJECT#: 2013095



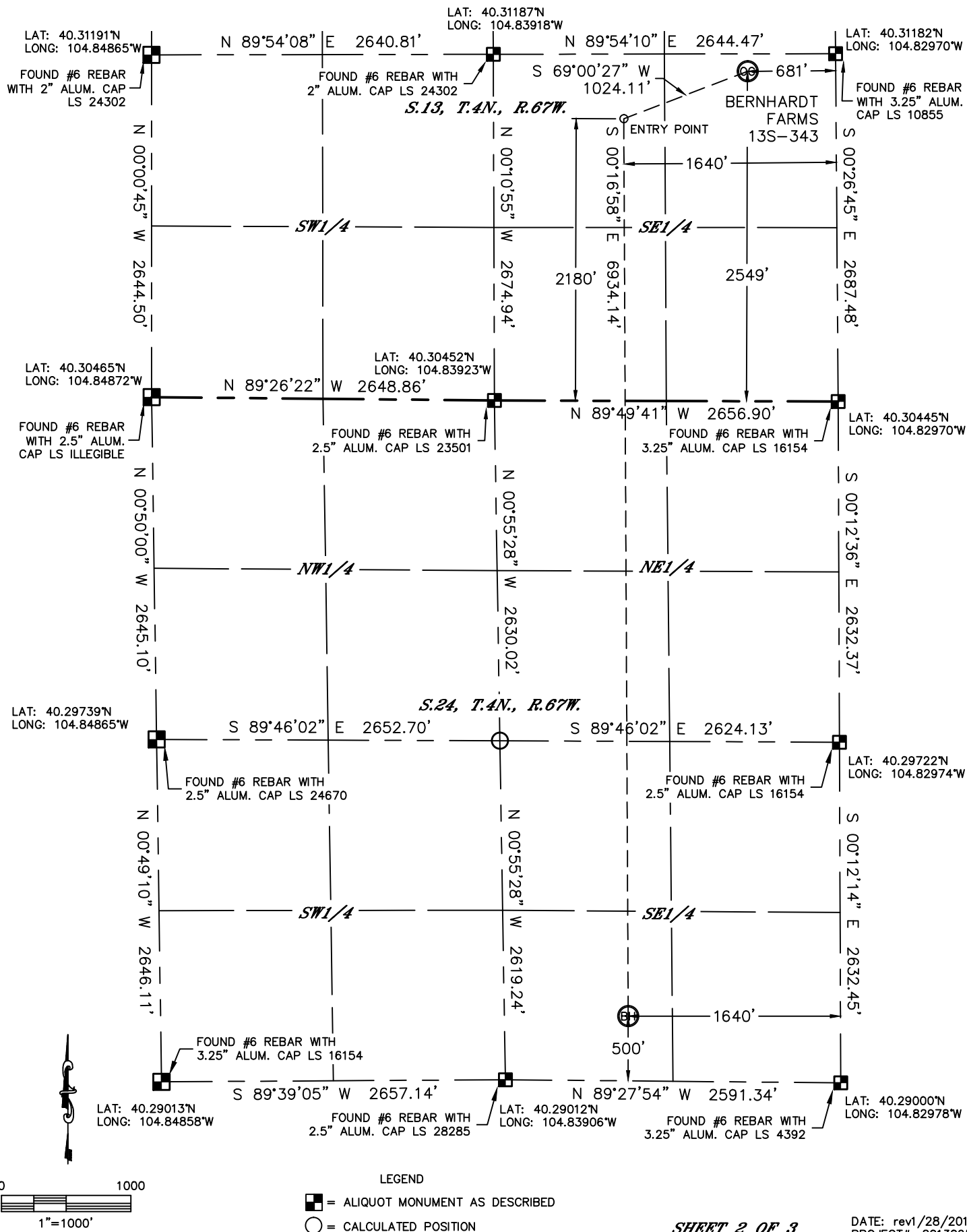


Lat40°, Inc. 1635 Foxtrail Drive, Suite 325 Loveland, CO 970-776-3321

WELL LOCATION CERTIFICATE

THIS MAP DOES NOT REPRESENT A BOUNDARY SURVEY

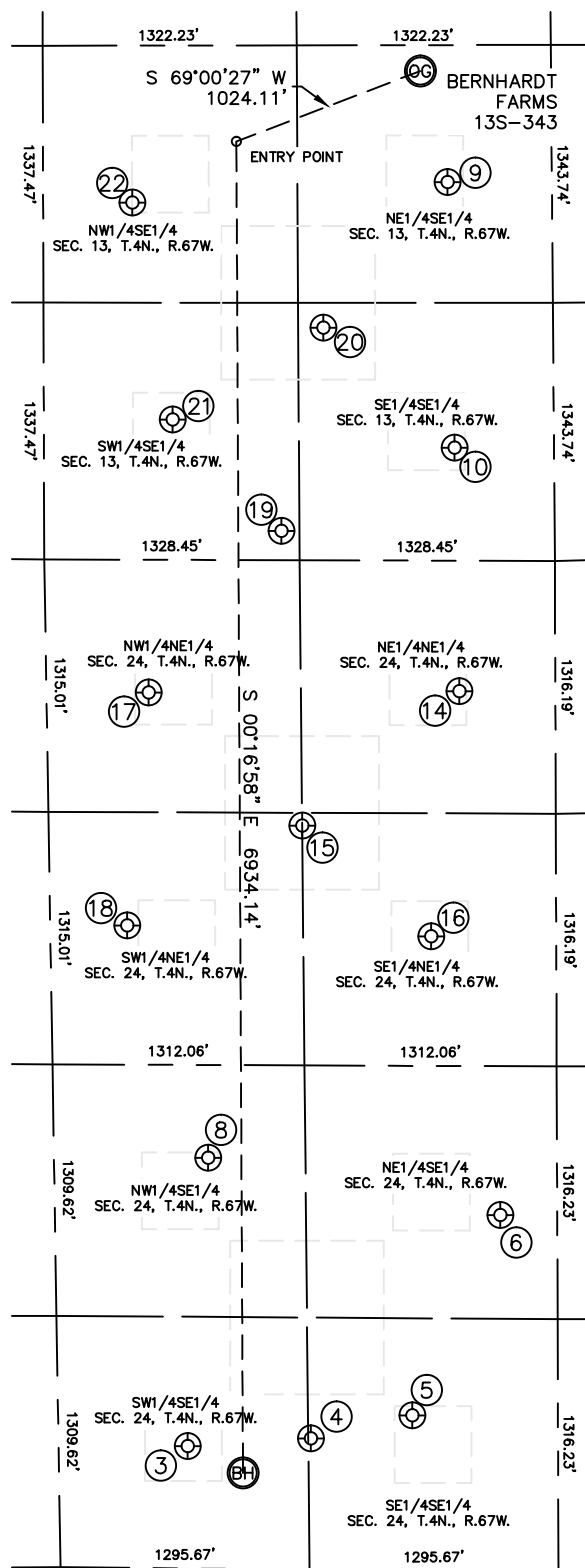
SECTION: 13
TOWNSHIP: 4N
RANGE: 67W



SITE SKETCH

BERNHARDT FARMS 13S-343

SECTION: 13
TOWNSHIP: 4N
RANGE: 67W



WELL NO.	WELL NAME	SHL FOOTAGE				SHL LAT°	SHL LONG°	PDOP	ELEV (FT.)	1/4,1/4
3	JOHNSTON 34-24	637	FSL	1927	FEL	40.29184	-104.83667	3.1	4726	SWSE
4	JOHNSTON 5	683	FSL	1287	FEL	40.29193	-104.83438	2.7	4725	SESE
5	JOHNSTON 44-24	808	FSL	759	FEL	40.29225	-104.83248	2.7	4724	SESE
6	JOHNSTON 43-24	1856	FSL	297	FEL	40.29511	-104.83082	2.3	4723	NESE
8	ORR 33-24	2139	FSL	1816	FEL	40.29595	-104.83625	2.9	4725	NWSE
9	BOUGE 1	1971	FSL	544	FEL	40.30987	-104.83165	2.0	4715	NESE
10	MESHA 1	587	FSL	518	FEL	40.30607	-104.83156	1.9	4717	SESE
14	KRISTIN 1	680	FNL	500	FEL	40.30260	-104.83150	2.2	4719	NENE
15	BERNHARDT 24C	1383	FNL	1320	FEL	40.30069	-104.83445	1.8	4721	SENE
16	SARAH 1	1958	FNL	651	FEL	40.29909	-104.83206	2.2	4721	SENE
17	JOHNNY 1	691	FNL	2117	FEL	40.30261	-104.83730	2.2	4722	NWNE
18	JENNIFER 1	1905	FNL	2233	FEL	40.29929	-104.83773	2.0	4724	SWNE
19	BERNHARDT 13T	152	FSL	1423	FEL	40.30491	-104.83480	2.4	4718	SWSE
20	BERNHARDT 13D	1210	FSL	1195	FEL	40.30780	-104.83399	2.3	4716	SESE
21	BRYCE 1	731	FSL	1984	FEL	40.30651	-104.83681	1.8	4810	SWSE
22	BRINDL 1	1860	FSL	2184	FEL	40.30962	-104.83753	2.4	4779	NWSE



0 1000

1" = 1000'