



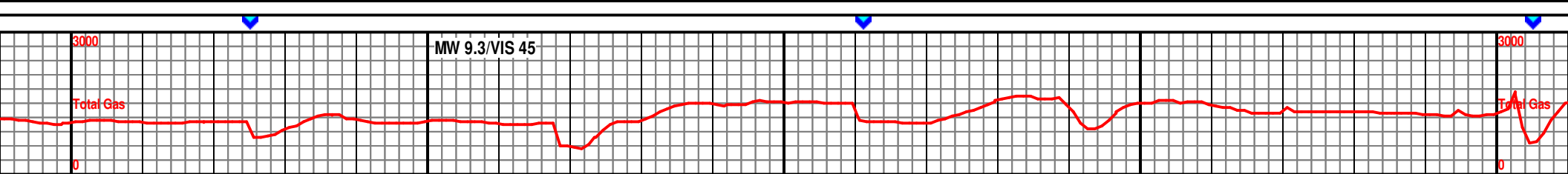
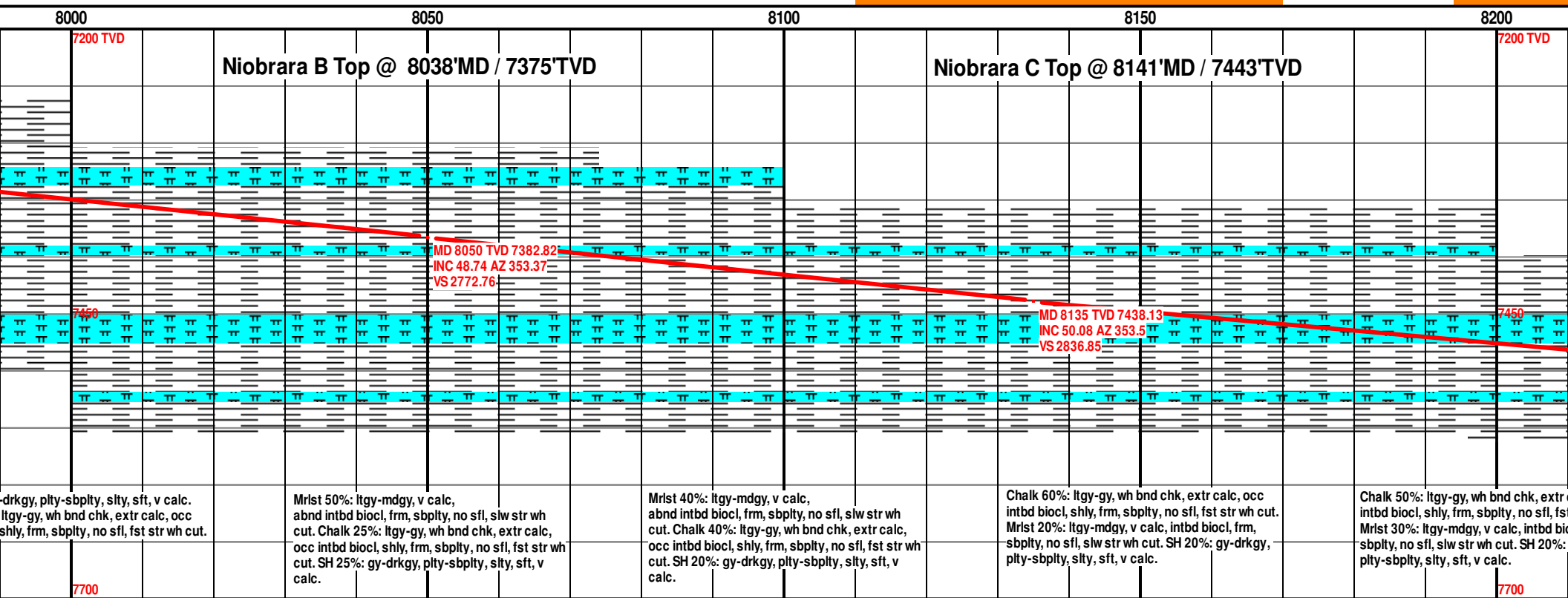
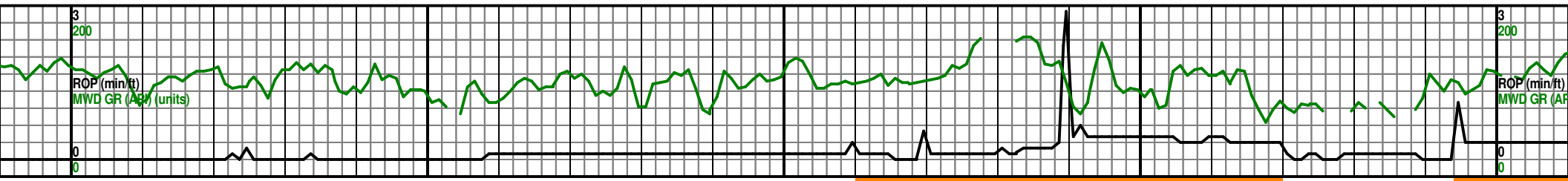
Scale 1:240 (5"=100') Imperial
Measured Depth Log

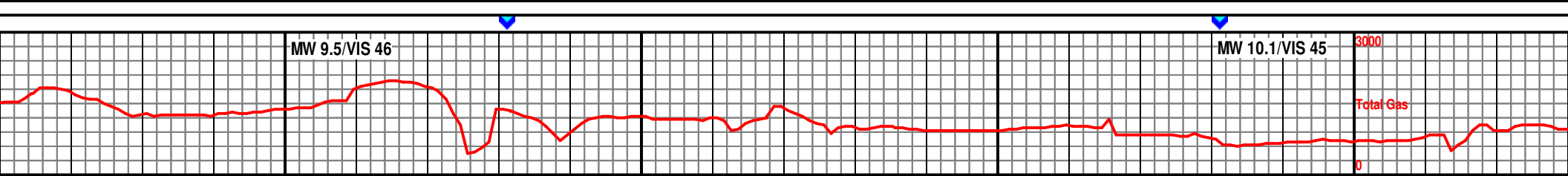
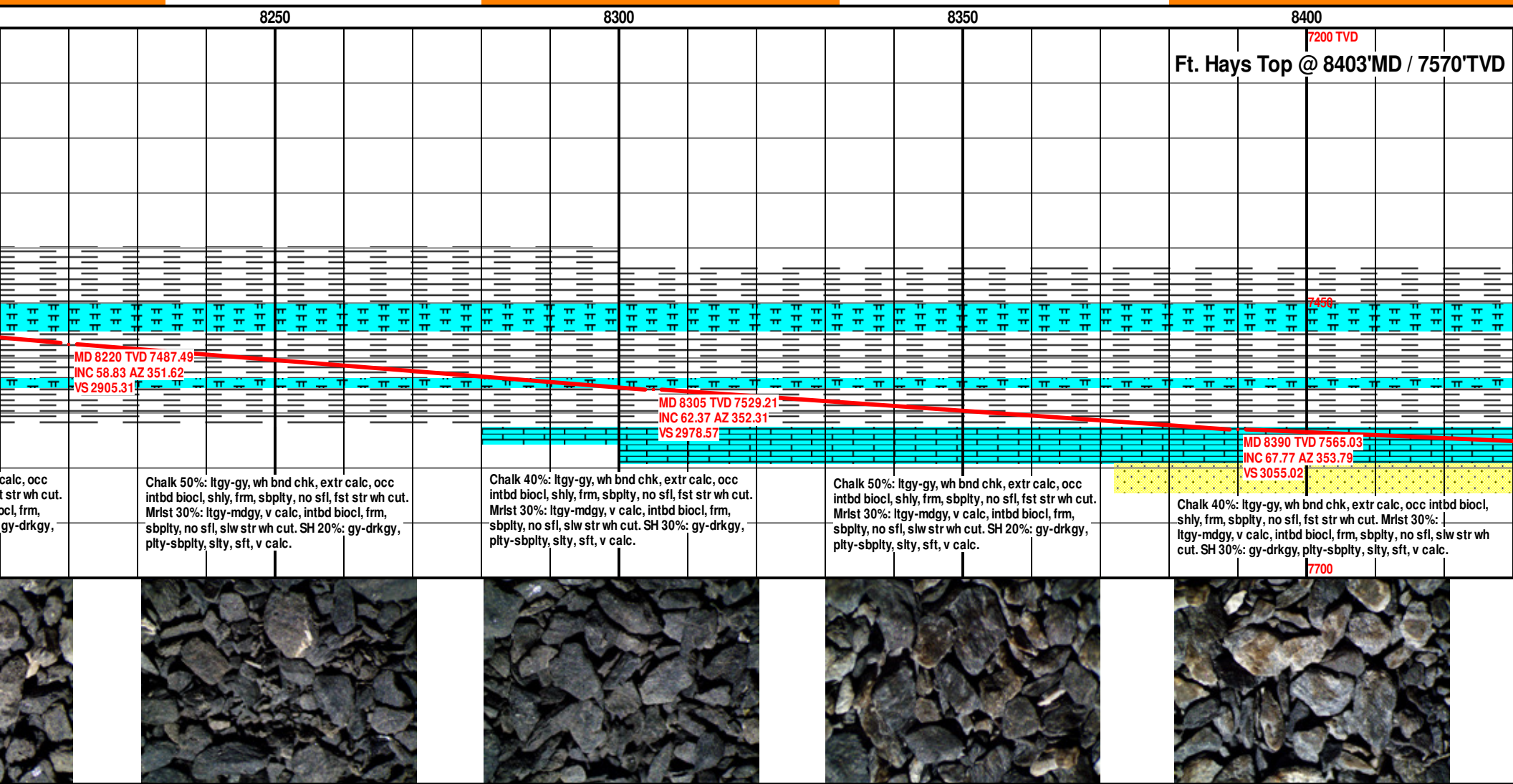
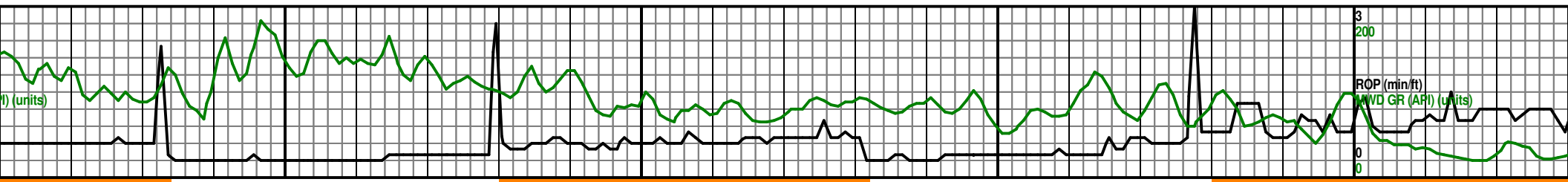
Well Name: Taipan 27C-15HZ
API: 05123406050000
Location: Weld County, CO.
License Number:
Spud Date: 1/24/2015
Surface Coordinates: 2192'FSL & 530'FEL, SEC.22 T2N R67W
Region: DJ Basin
Drilling Completed: 1/30/15
Bottom Hole Coordinates: 50'FNL & 743'FEL, SEC.15 T2N R67W
Ground Elevation (ft): 4998' K.B. Elevation (ft): 4899'
Logged Interval (ft): 7800' To: 13627' Total Depth (ft): 13627'
Formation: Codell
Type of Drilling Fluid: Water Base Mud

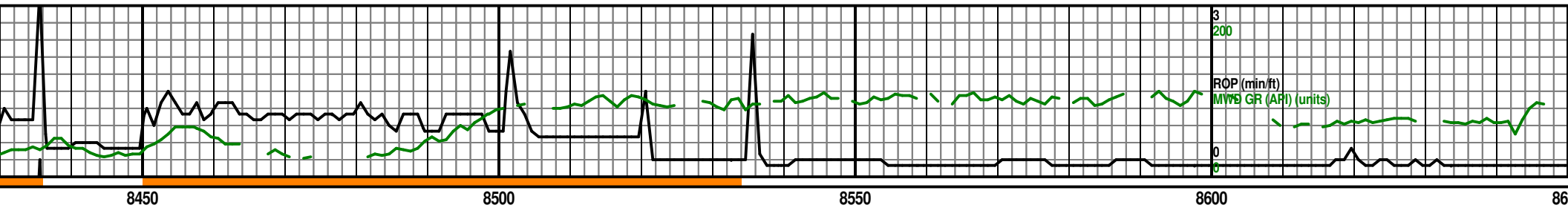
Printed by HORIZONTAL.LOG from WellSight Systems 1-800-447-1534 www.WellSight.com

OPERATOR

Company: Anadarko Petroleum Corporation
Address: 1099 18th Street, Suite 1800
Denver, CO 80202-1918

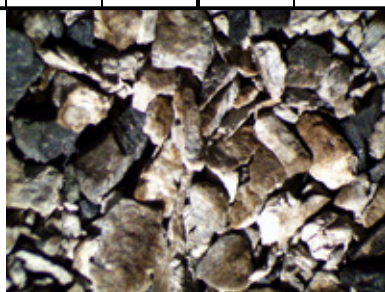
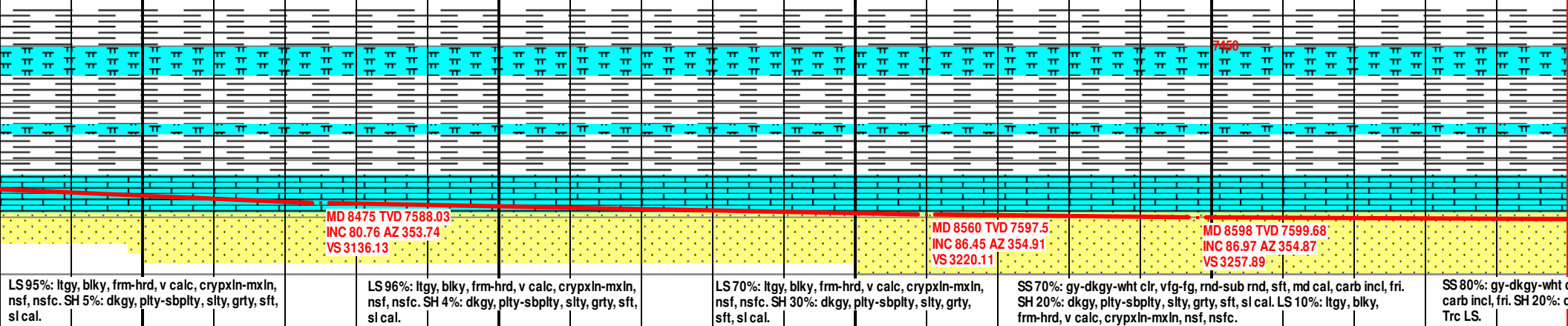






Codell Top @ 8497'MD / 7591'TVD

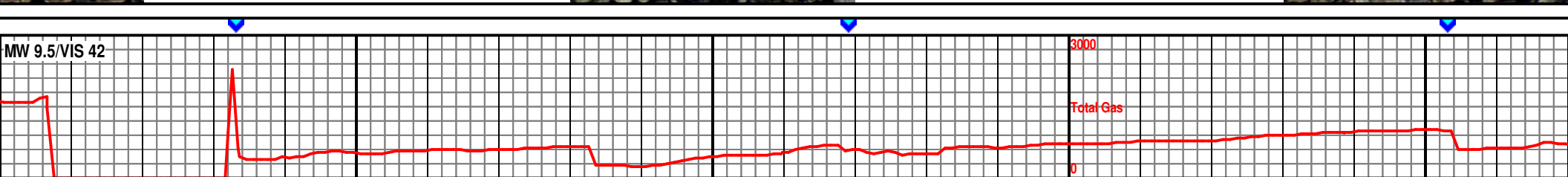
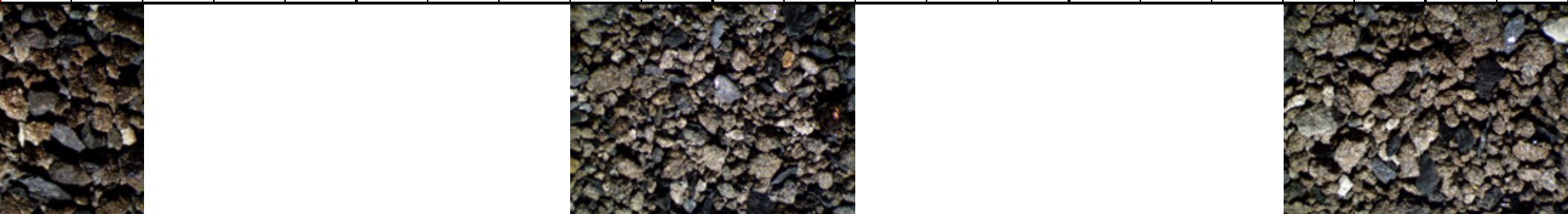
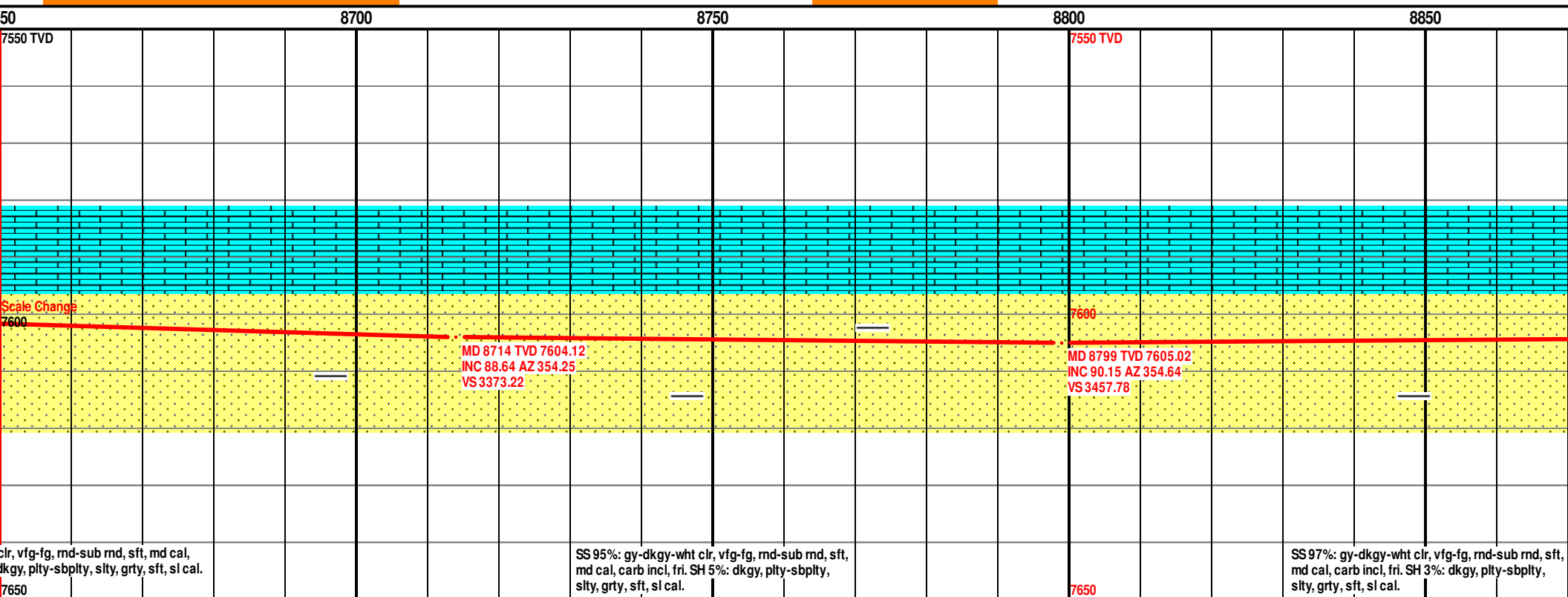
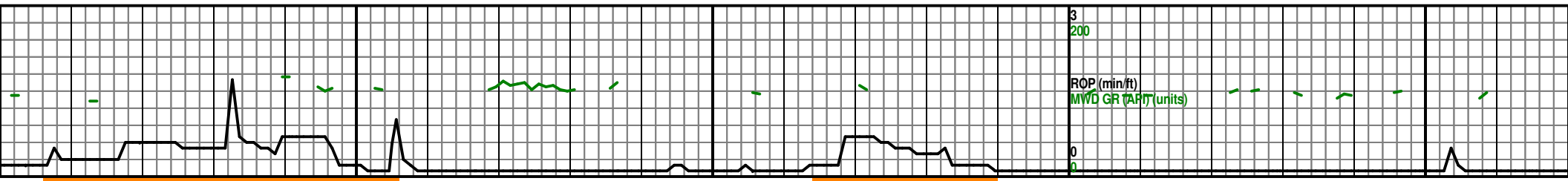
TD of 8657' MD Achieved at 8:30pm
1/26/2015. B.O.B. and drilling ahead in the
horizontal section @ 7:30pm 1/28/2015.

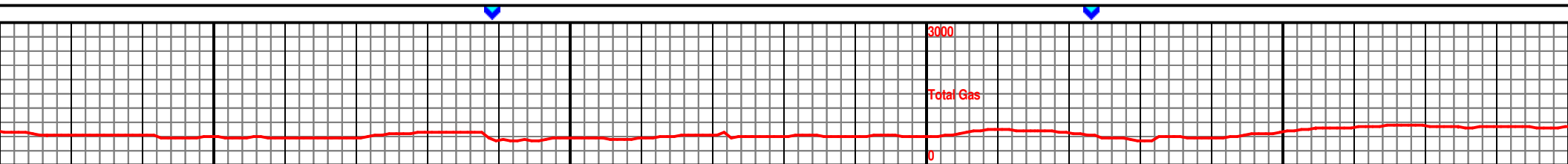
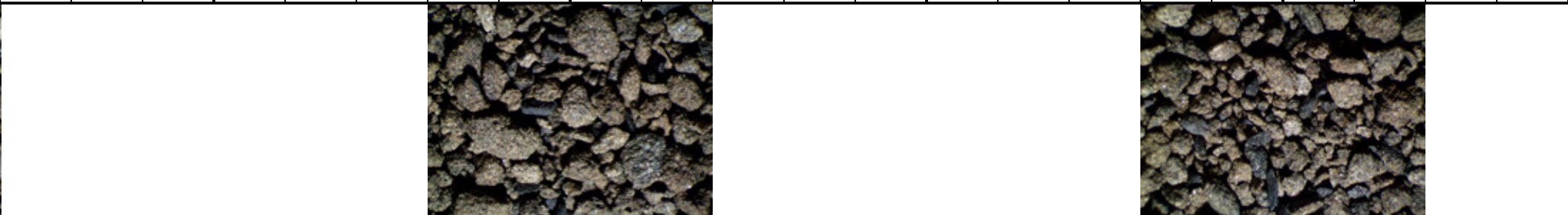
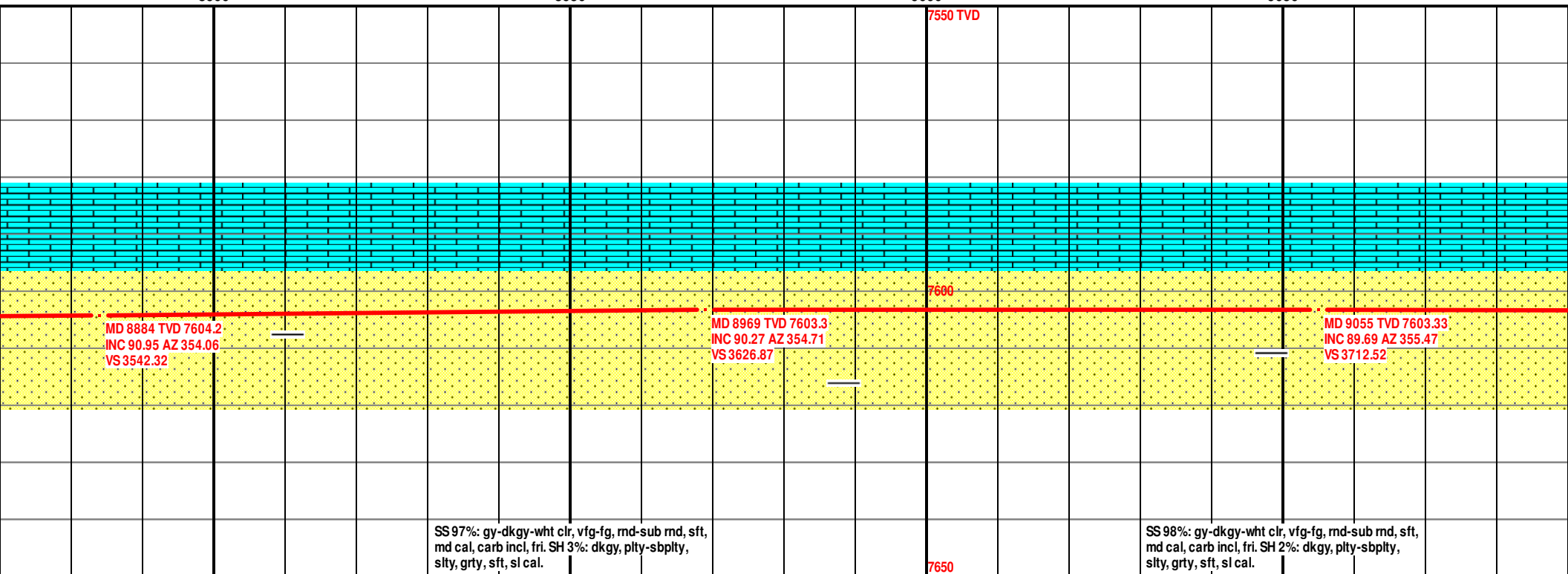
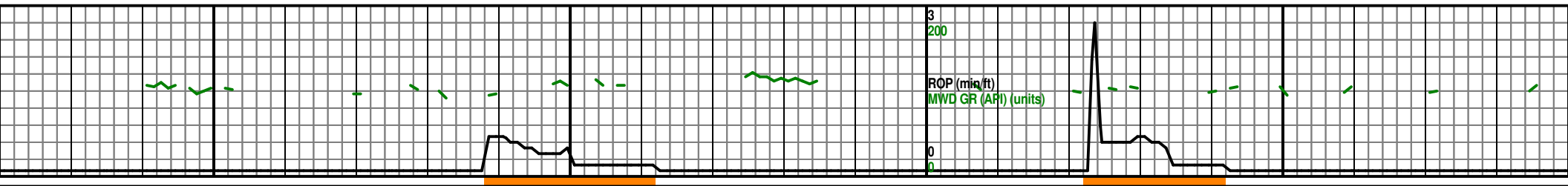


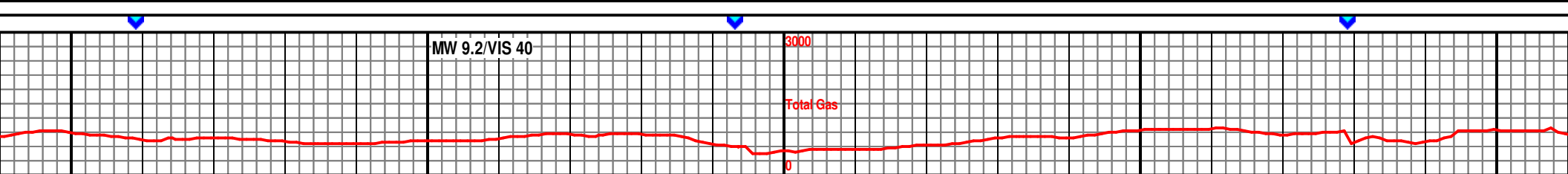
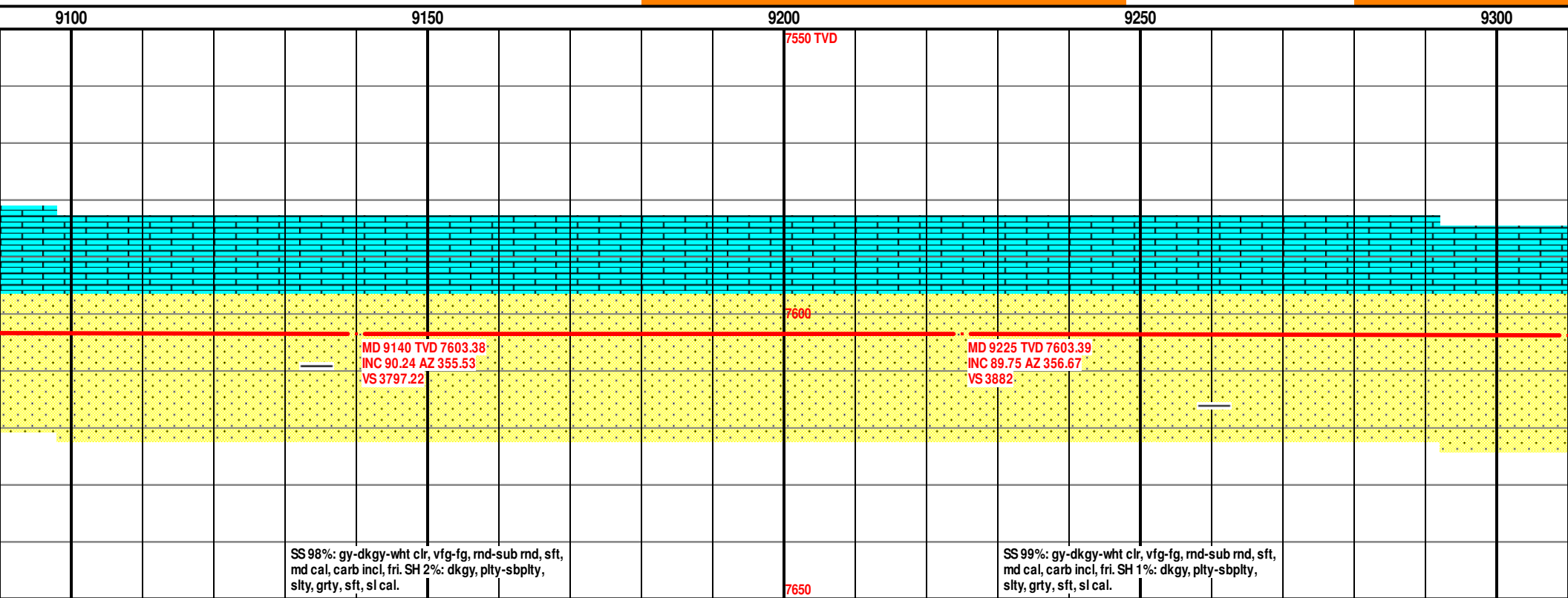
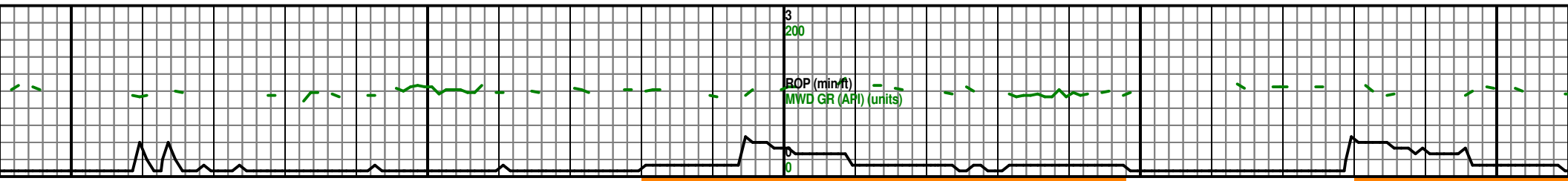
MW 10.1/VIS 48

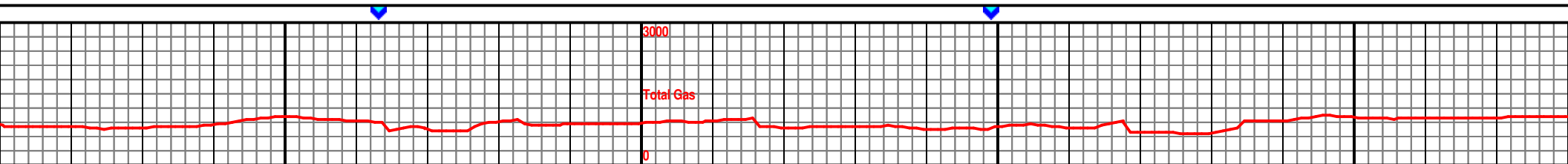
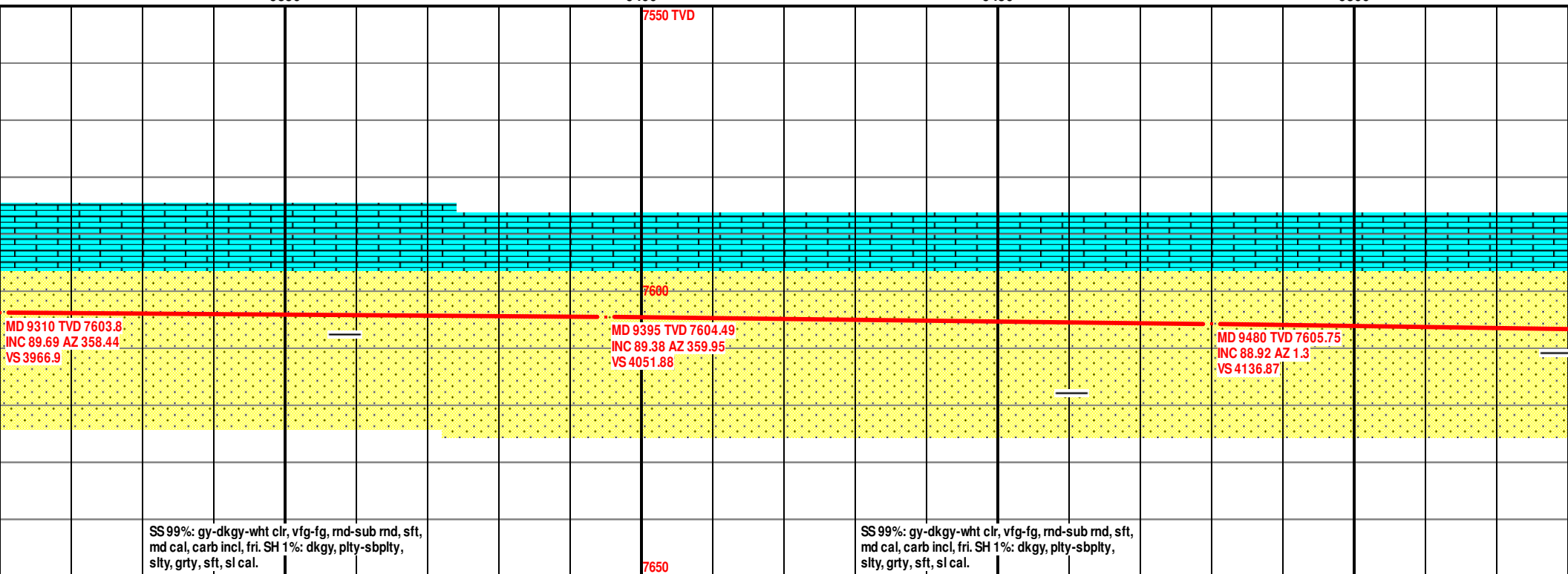
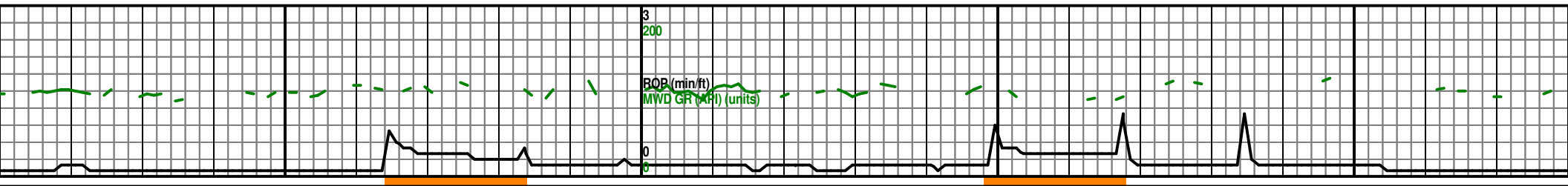
MW 10.2/VIS 49

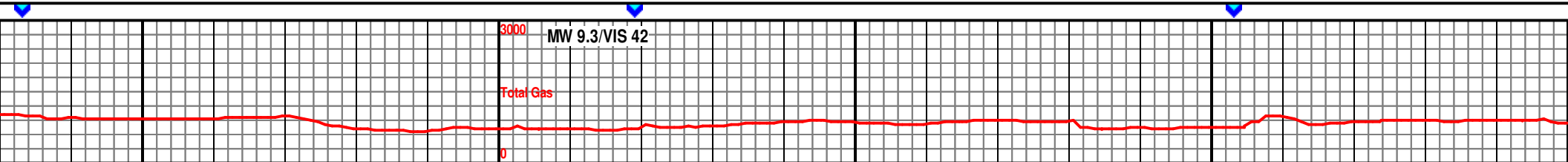
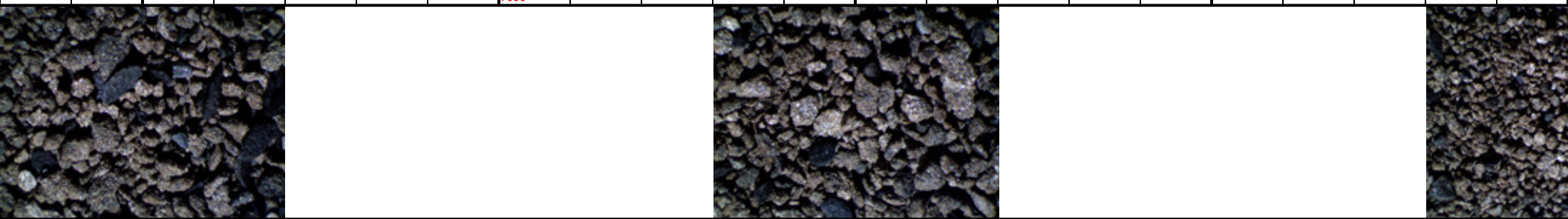
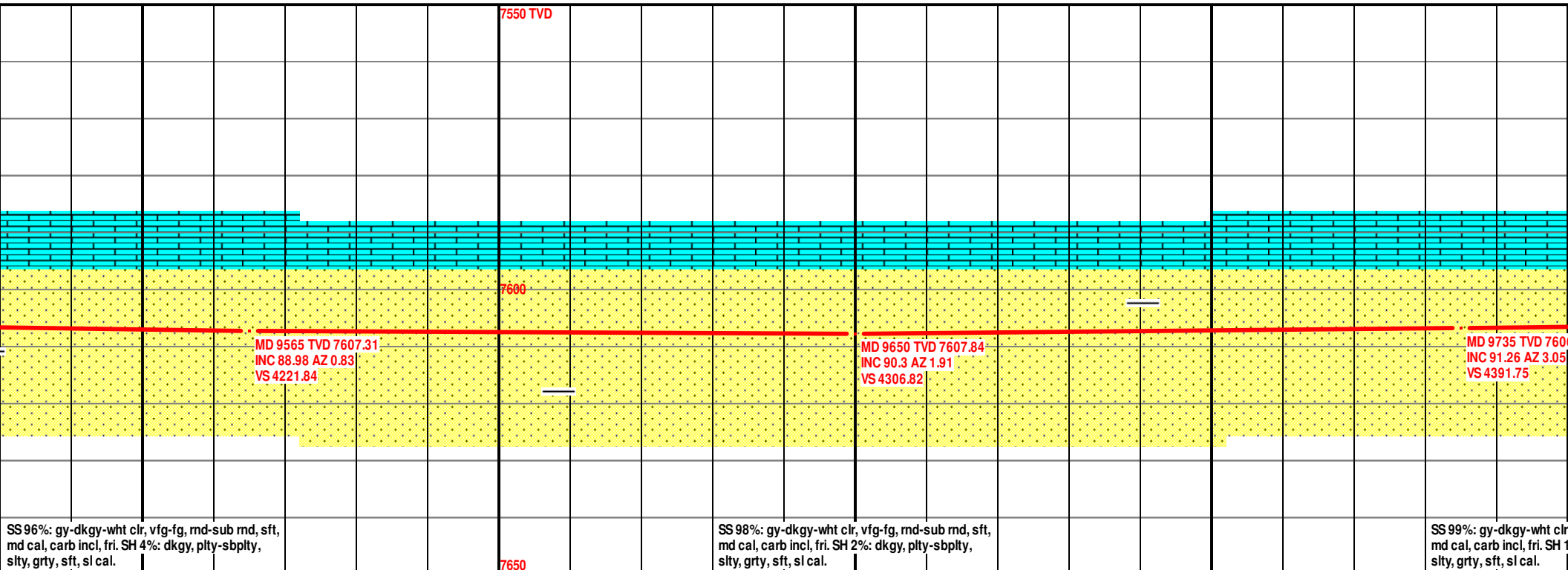
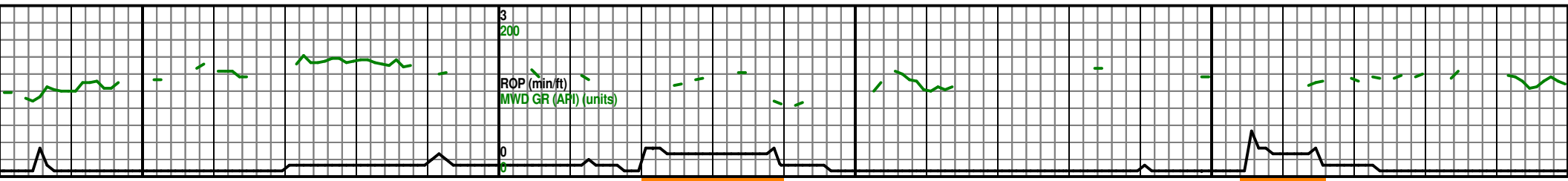
Total Gas
3000
0

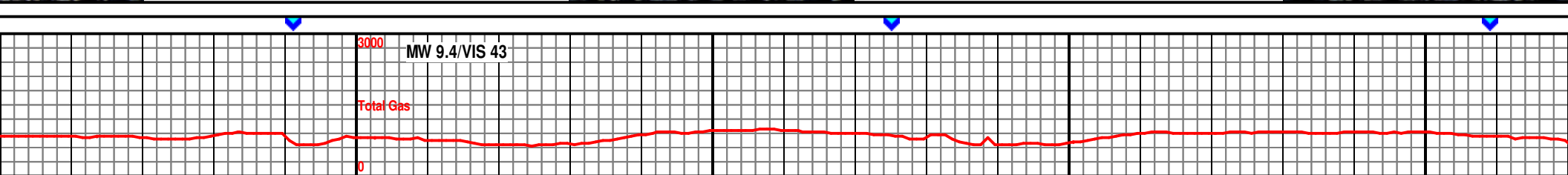
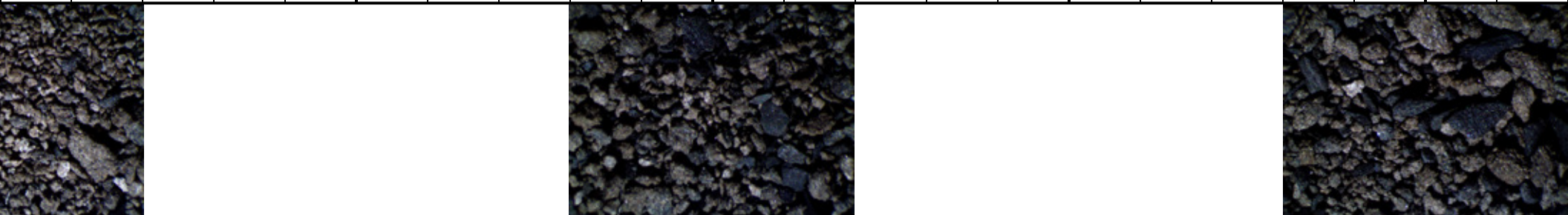
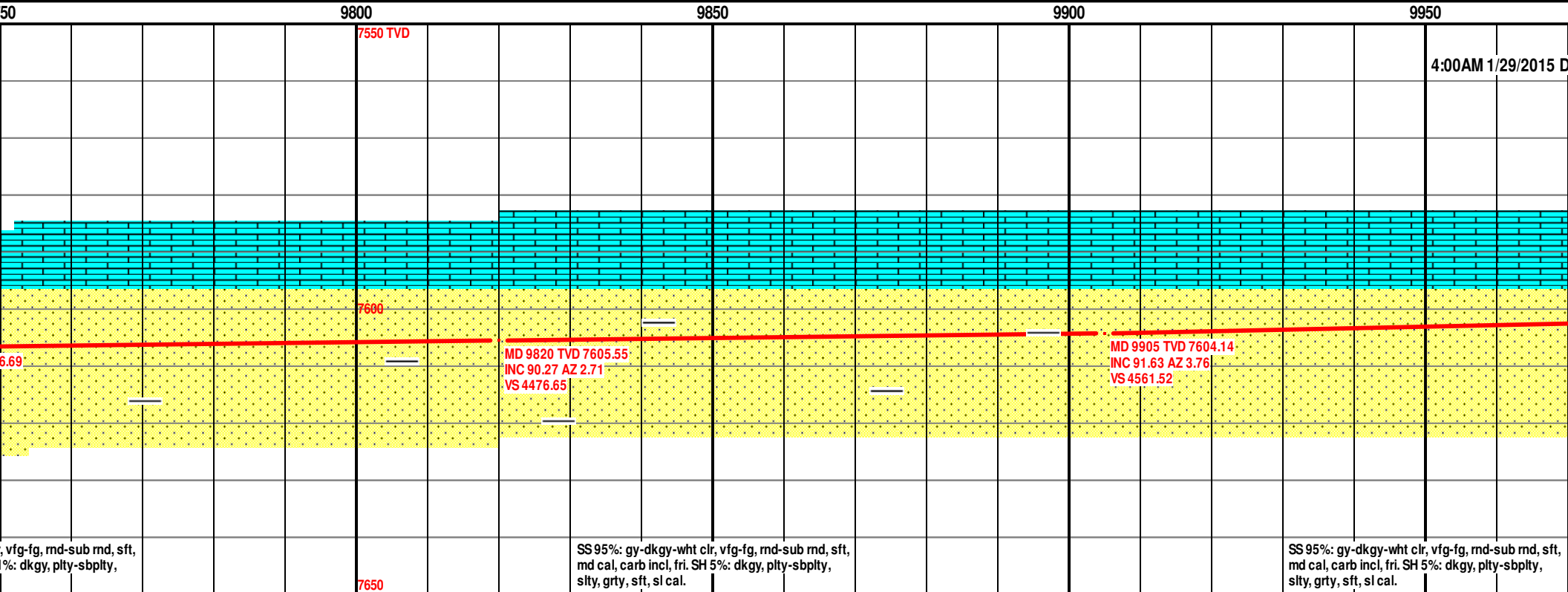
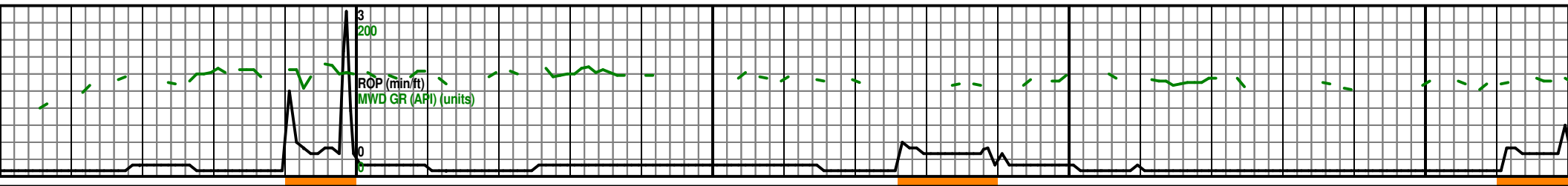


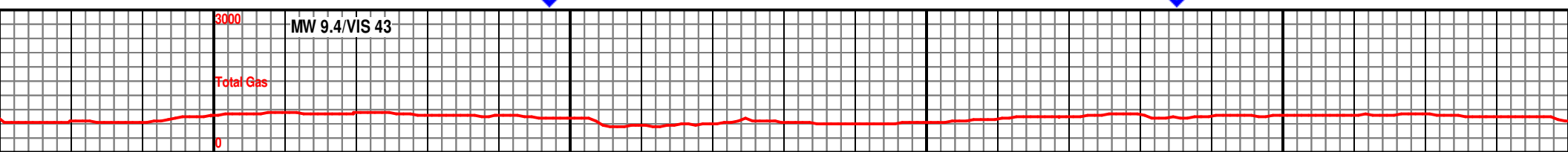
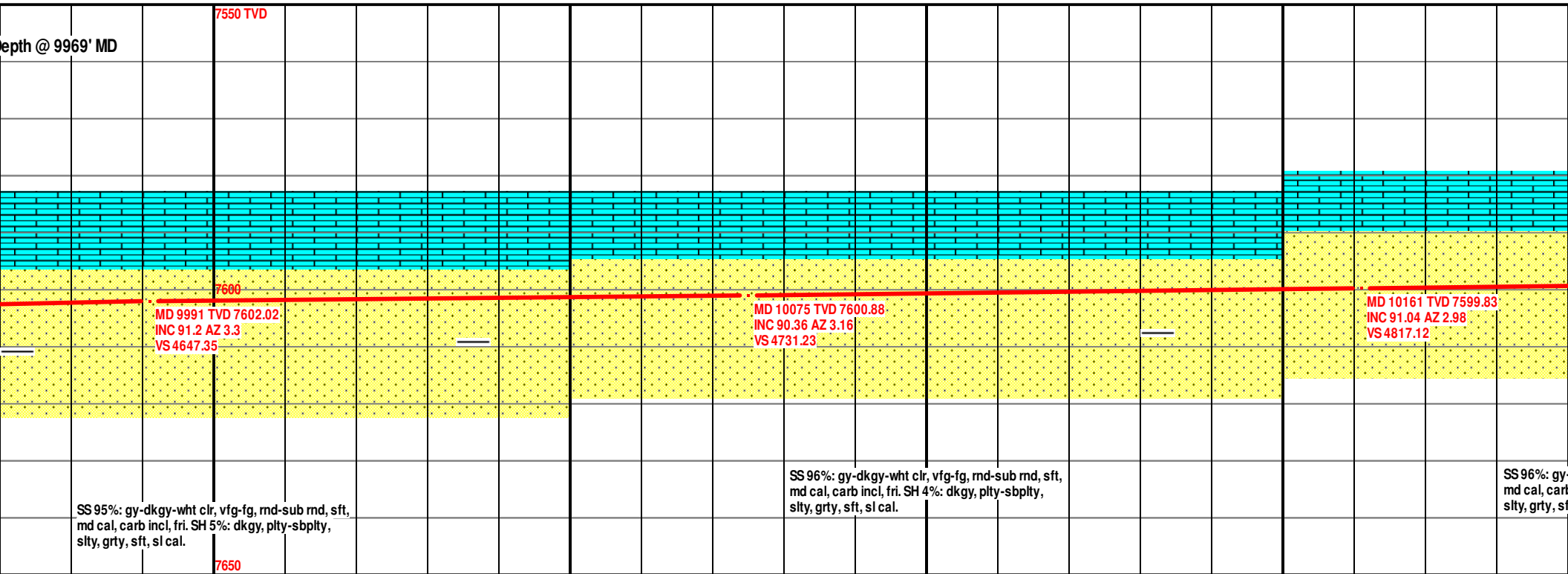
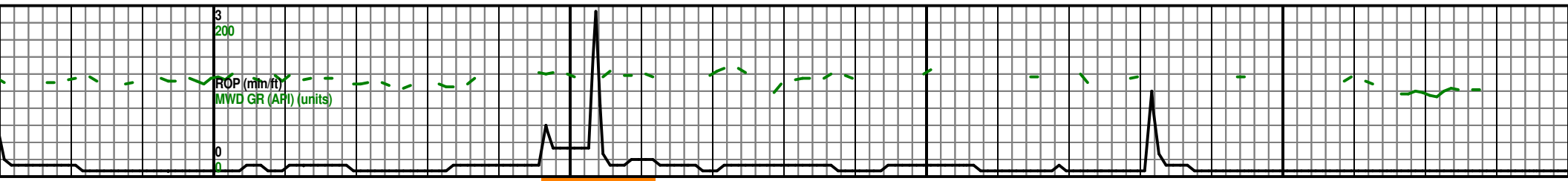


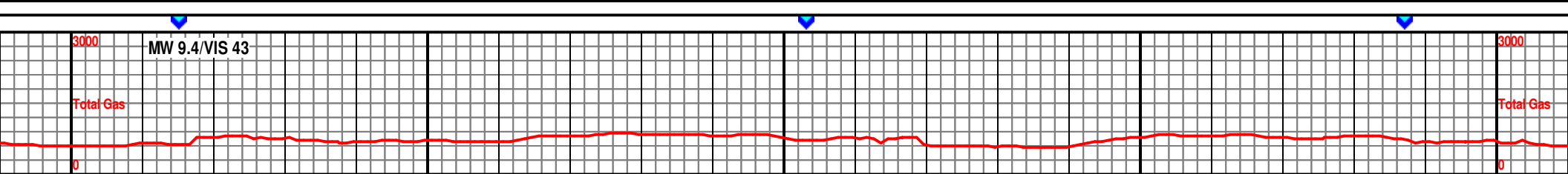
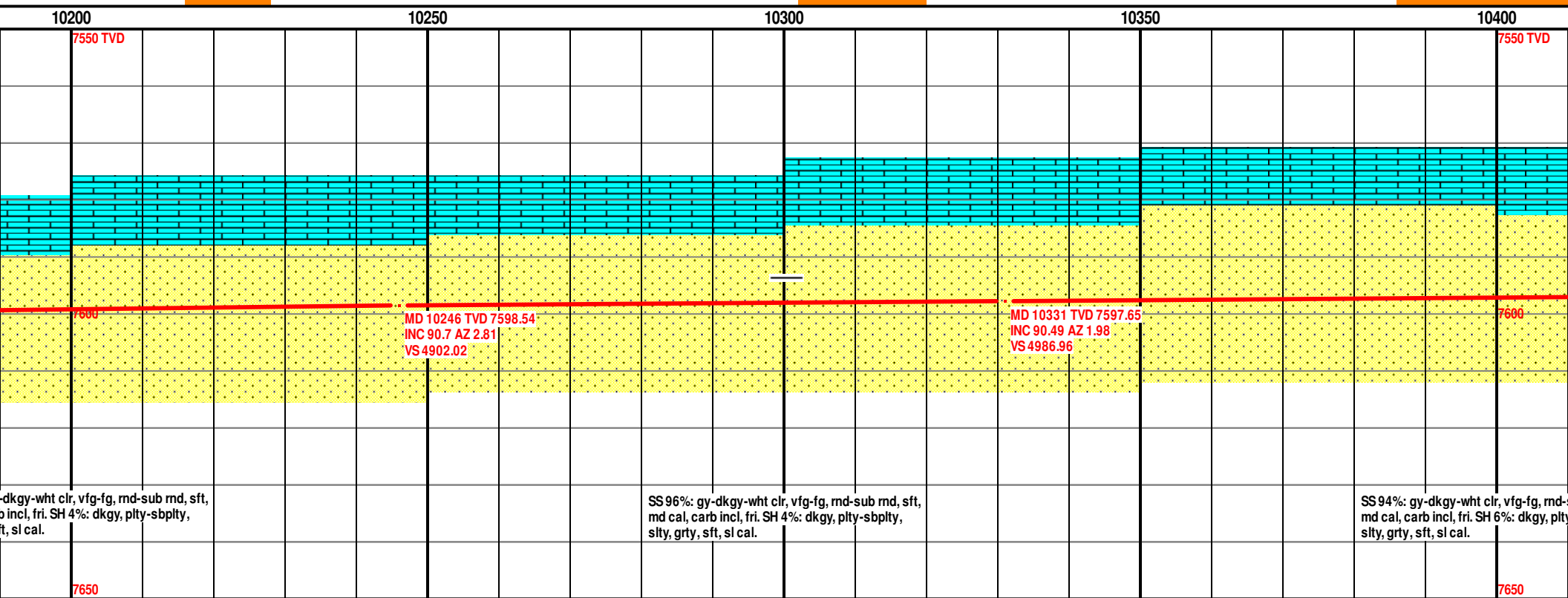
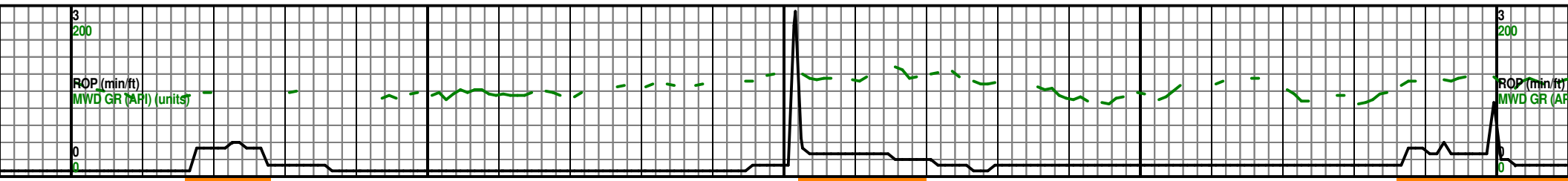


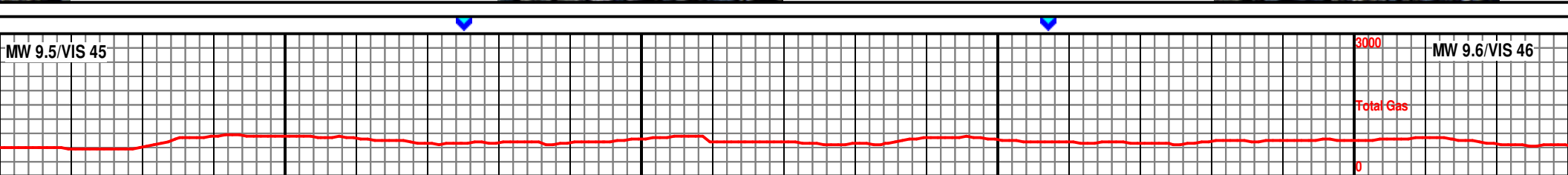
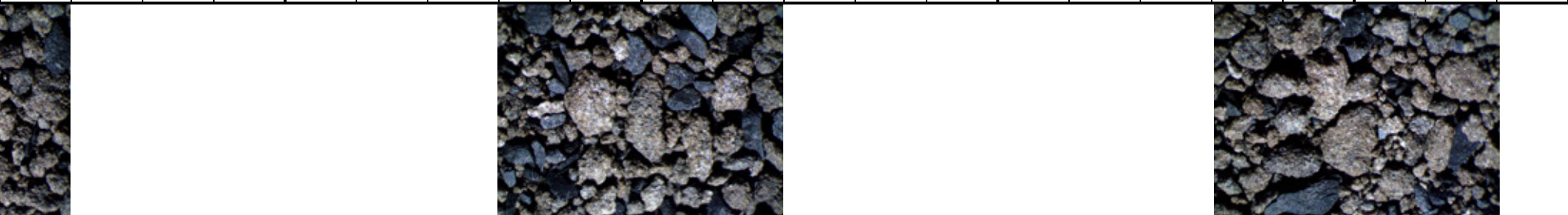
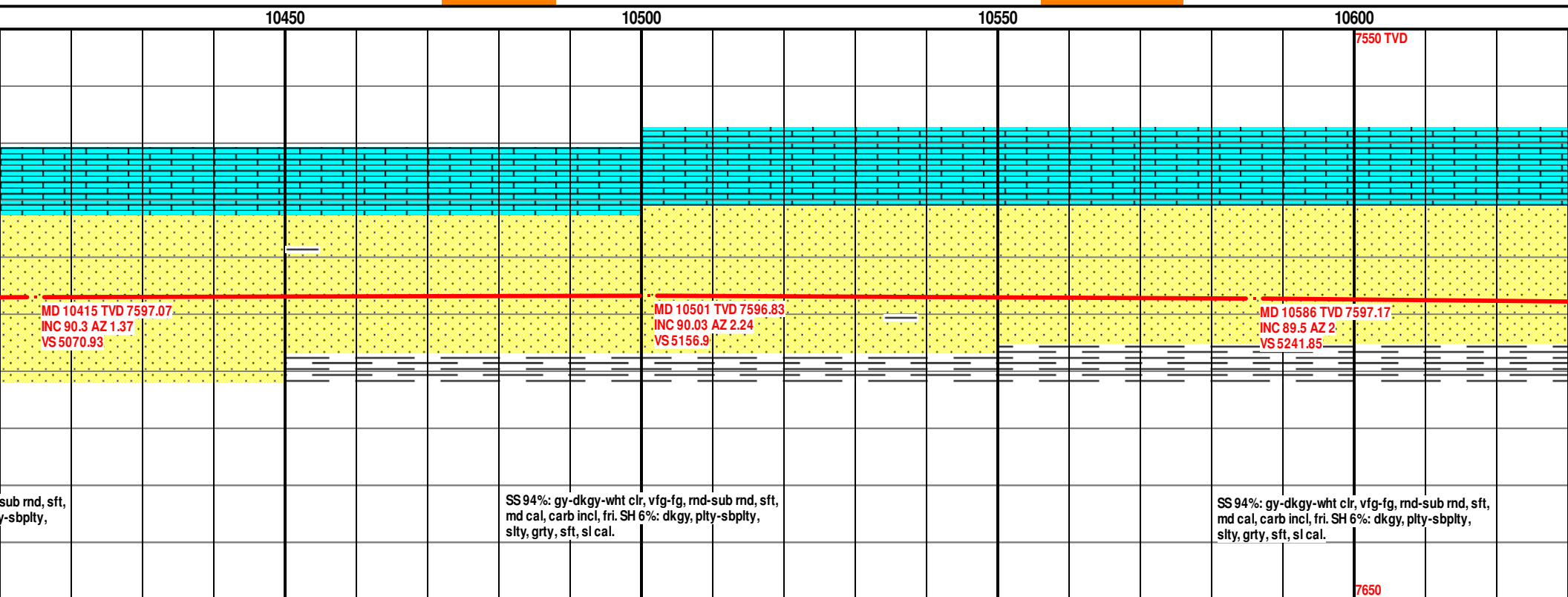
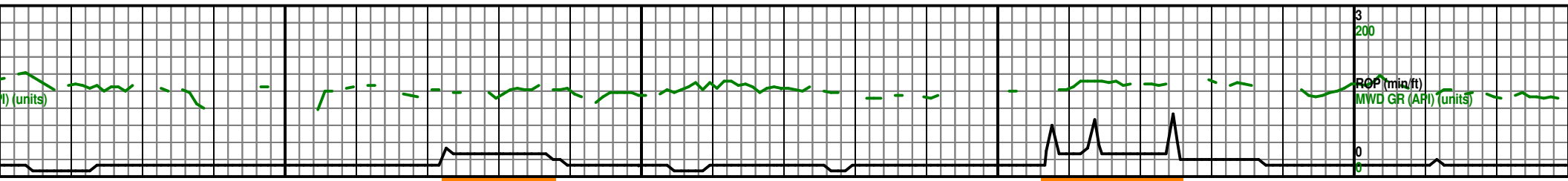


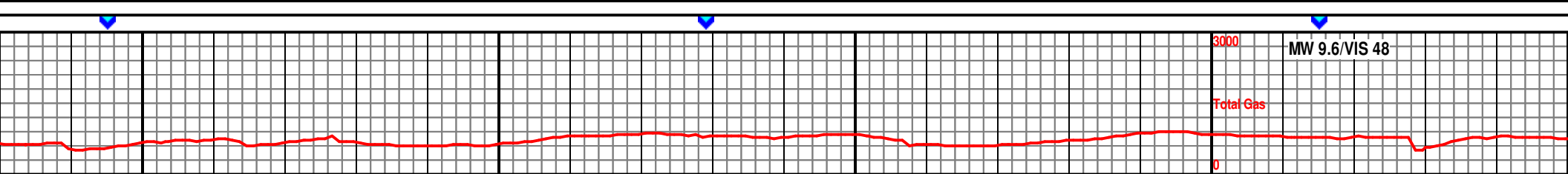
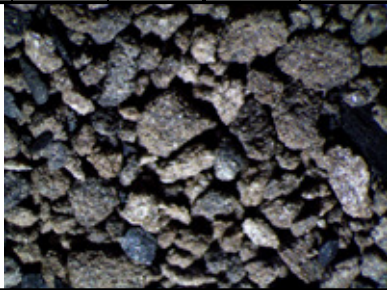
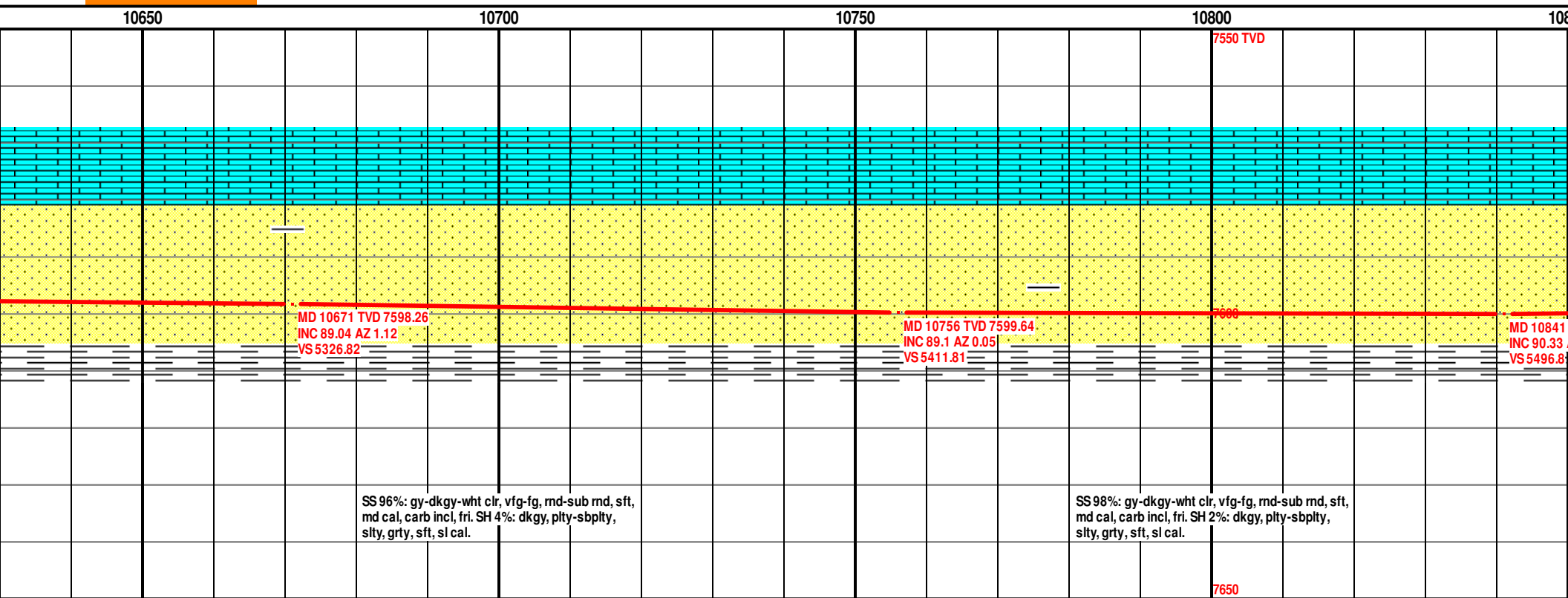
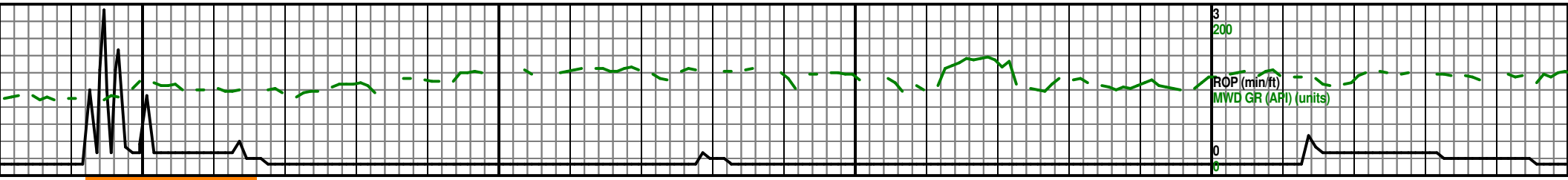


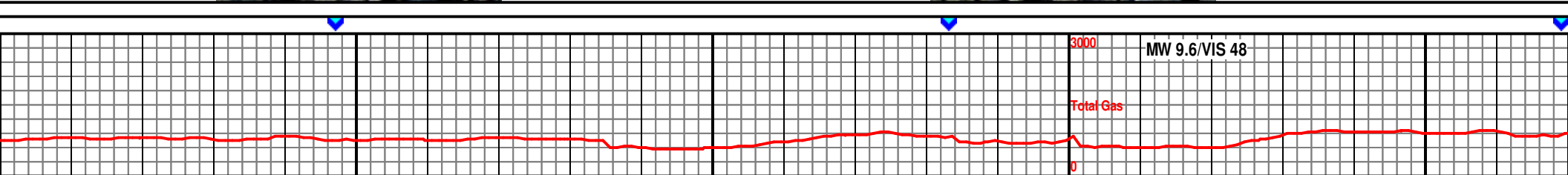
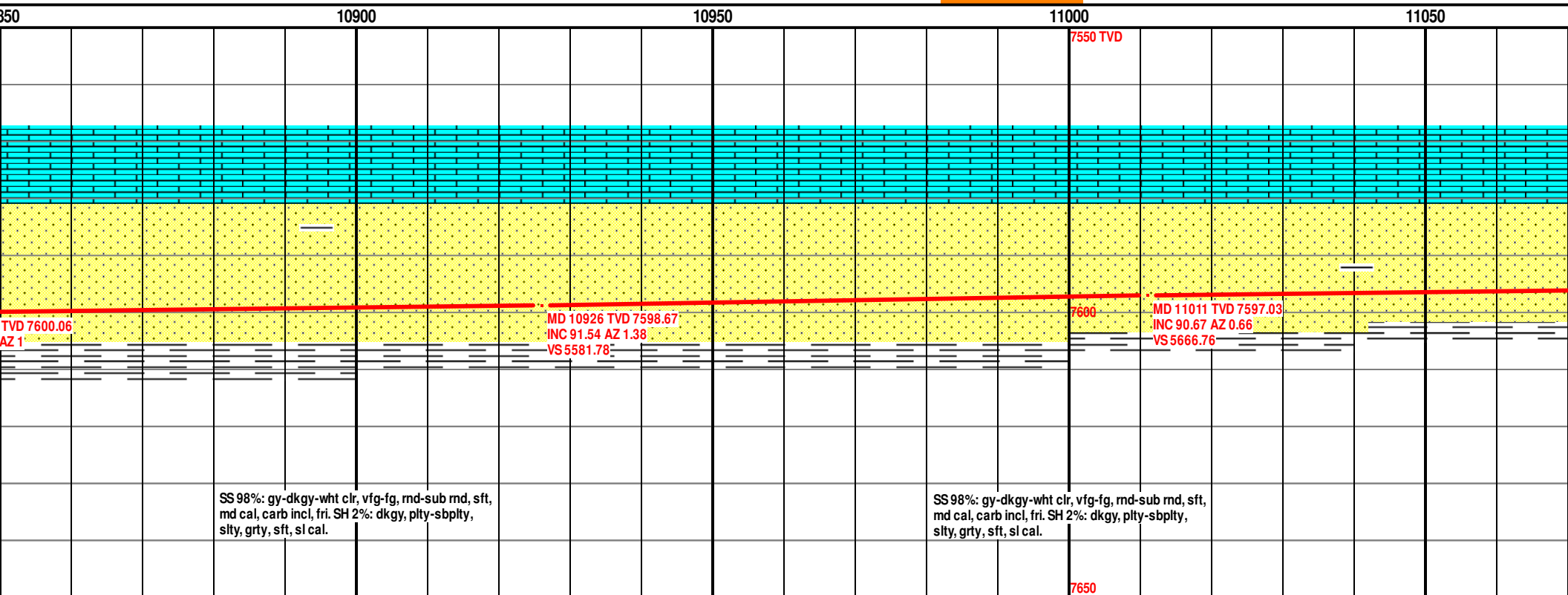
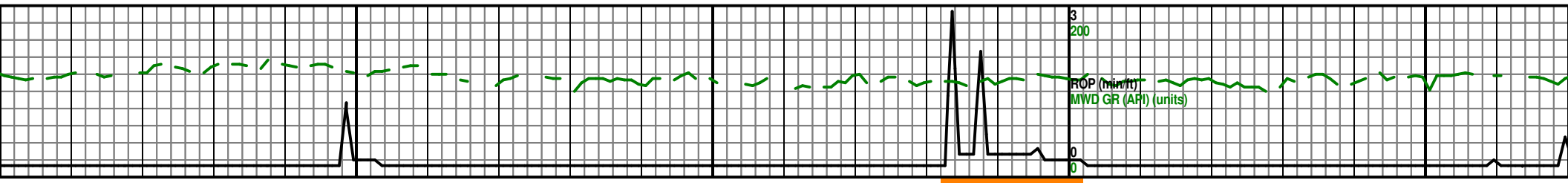


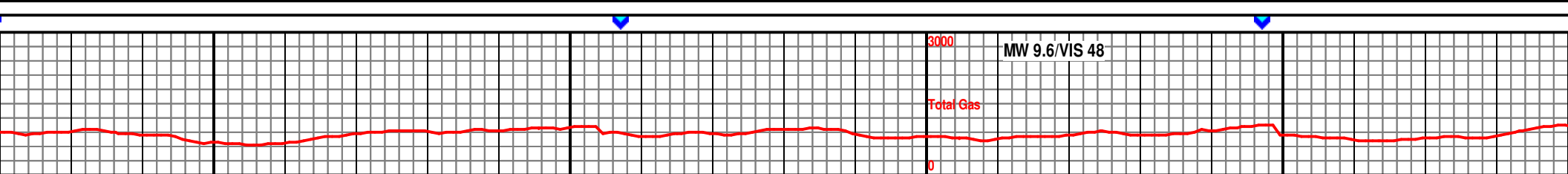
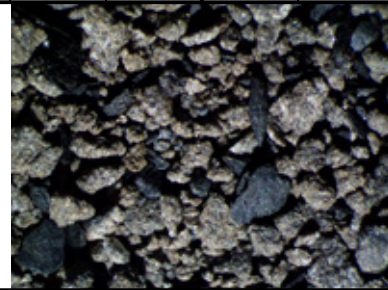
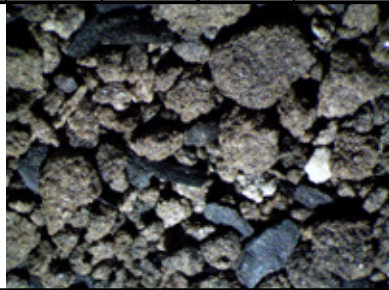
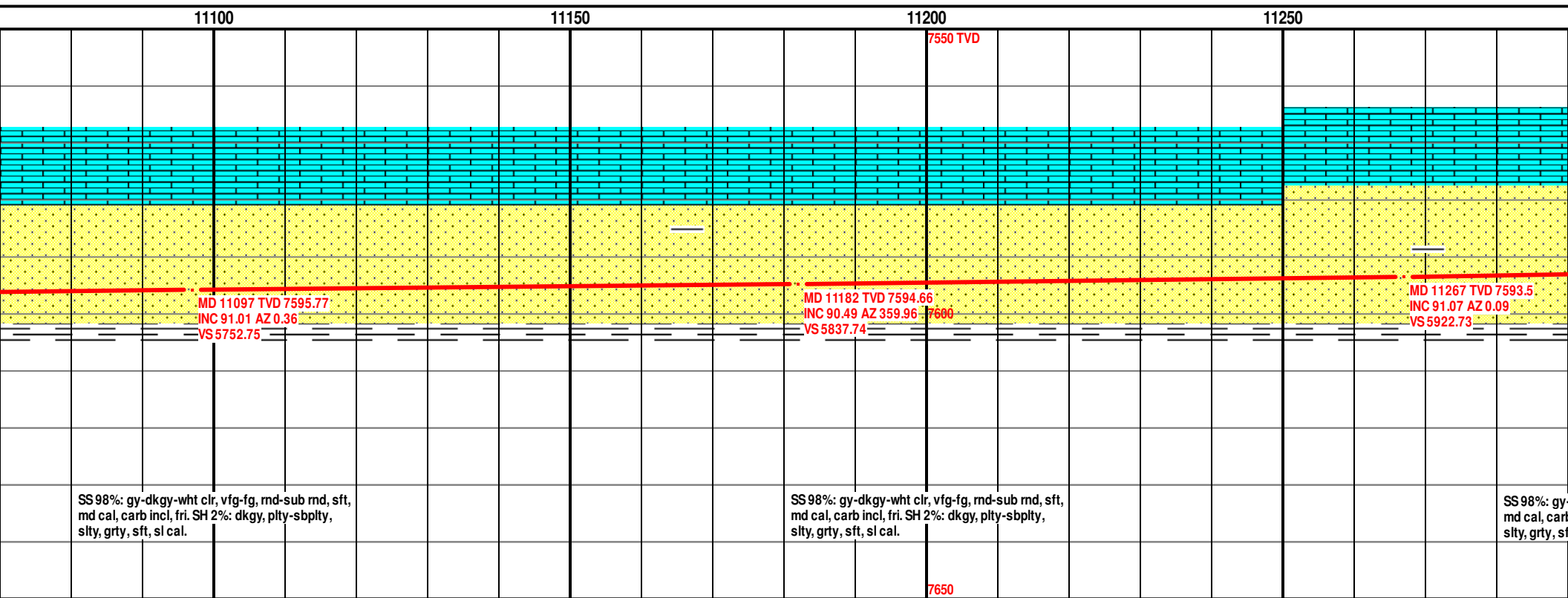
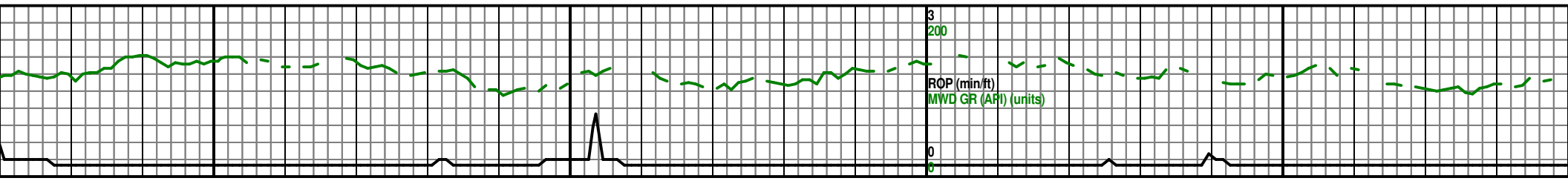


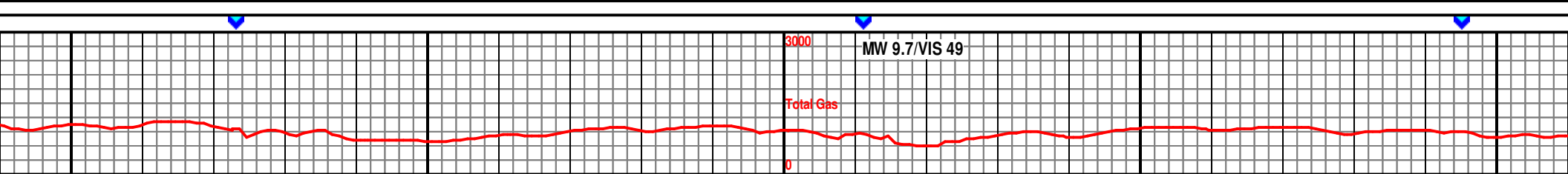
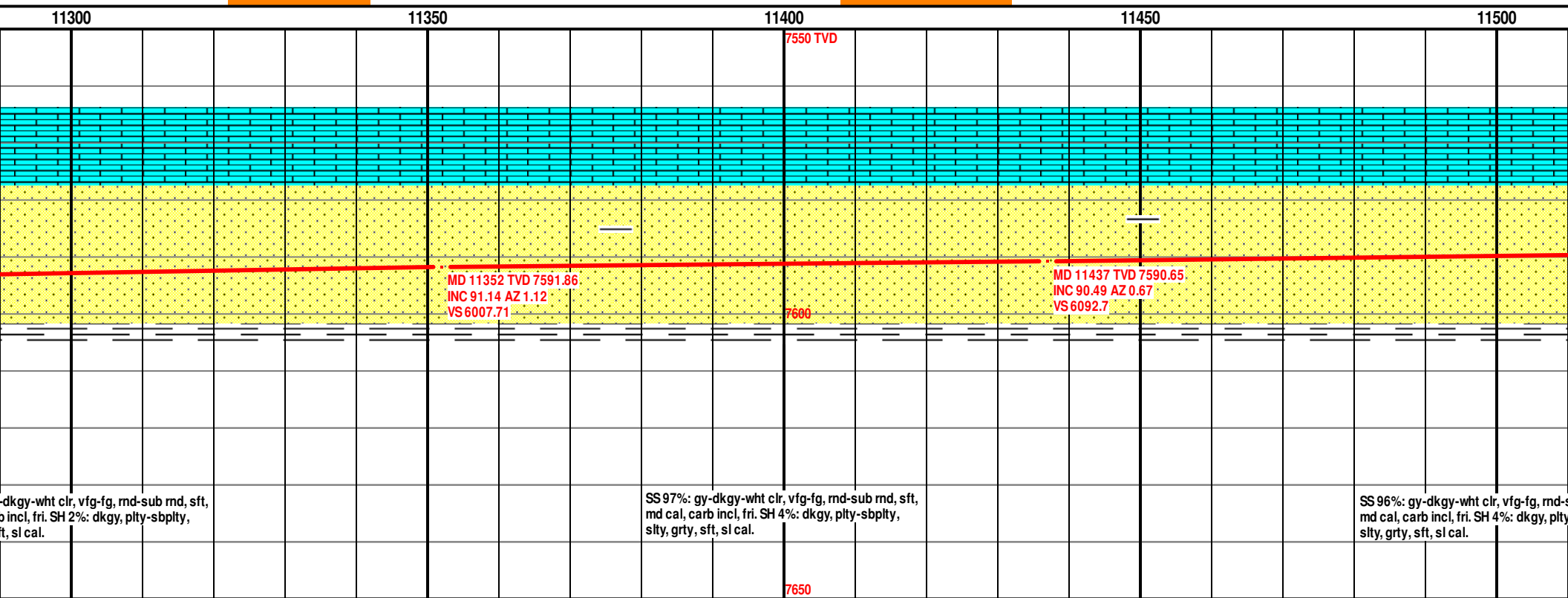
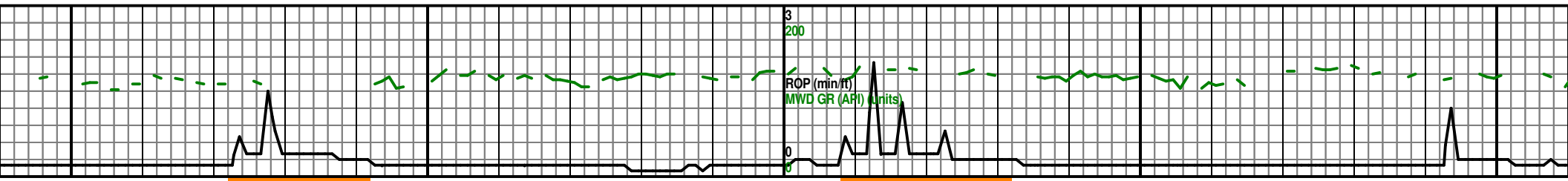


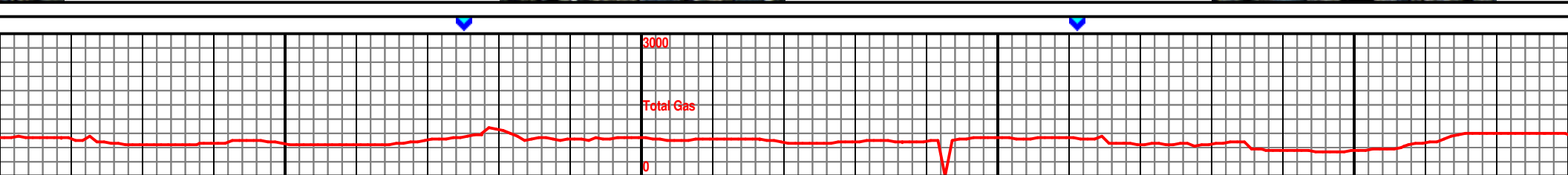
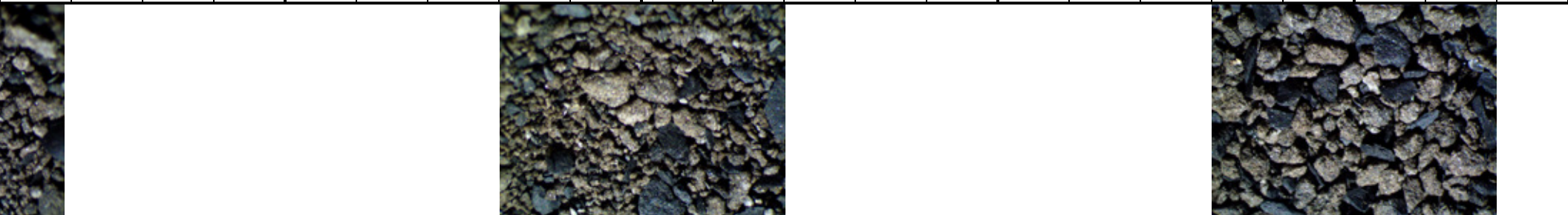
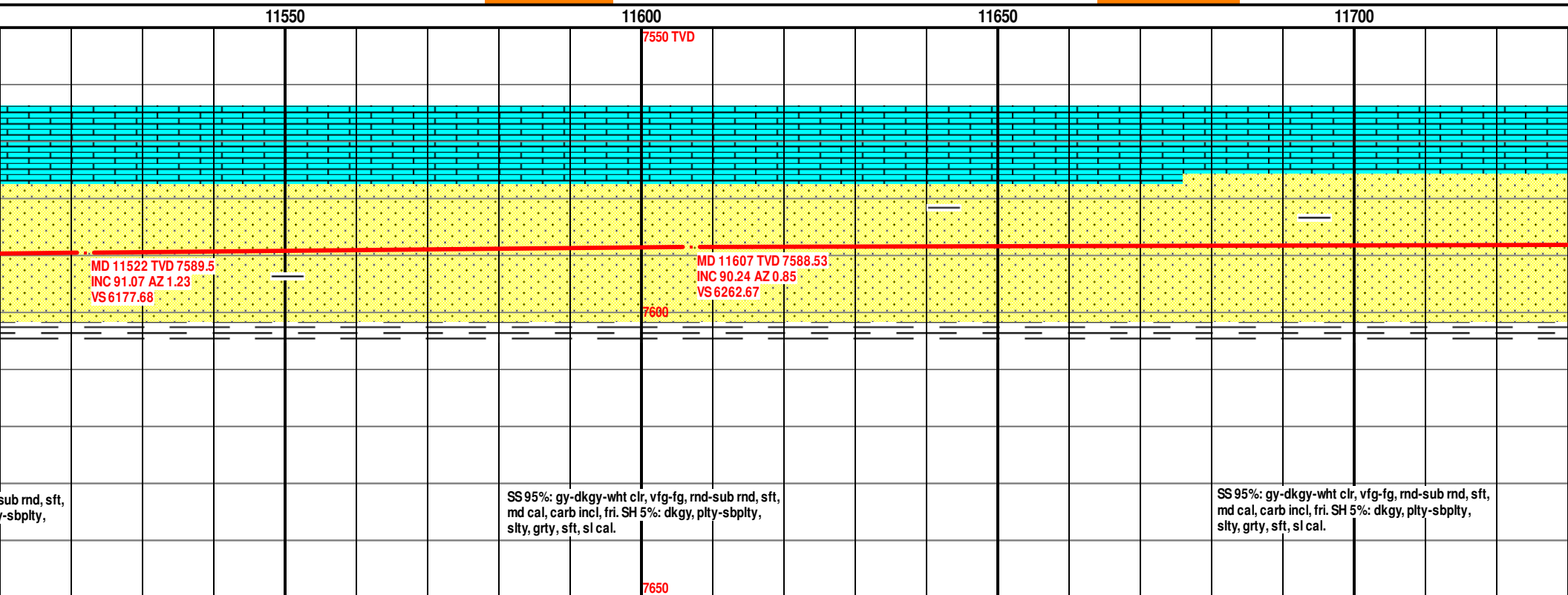
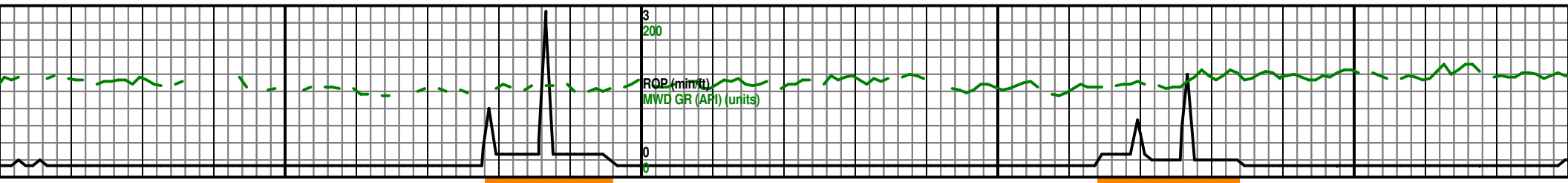


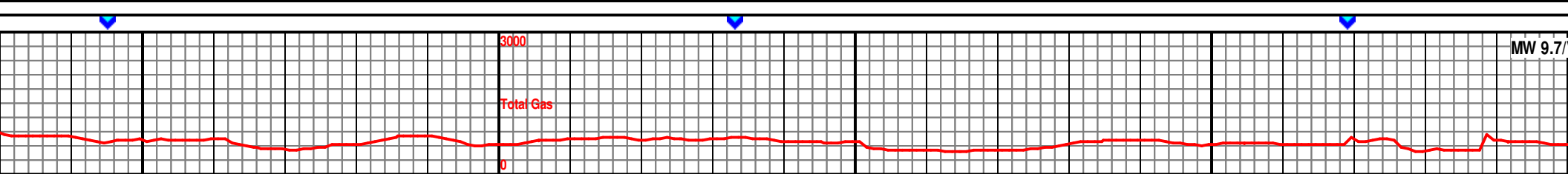
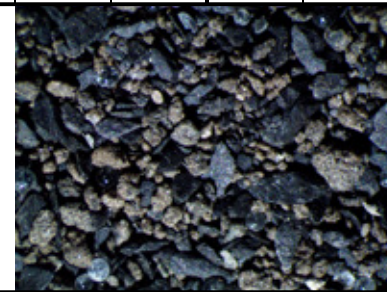
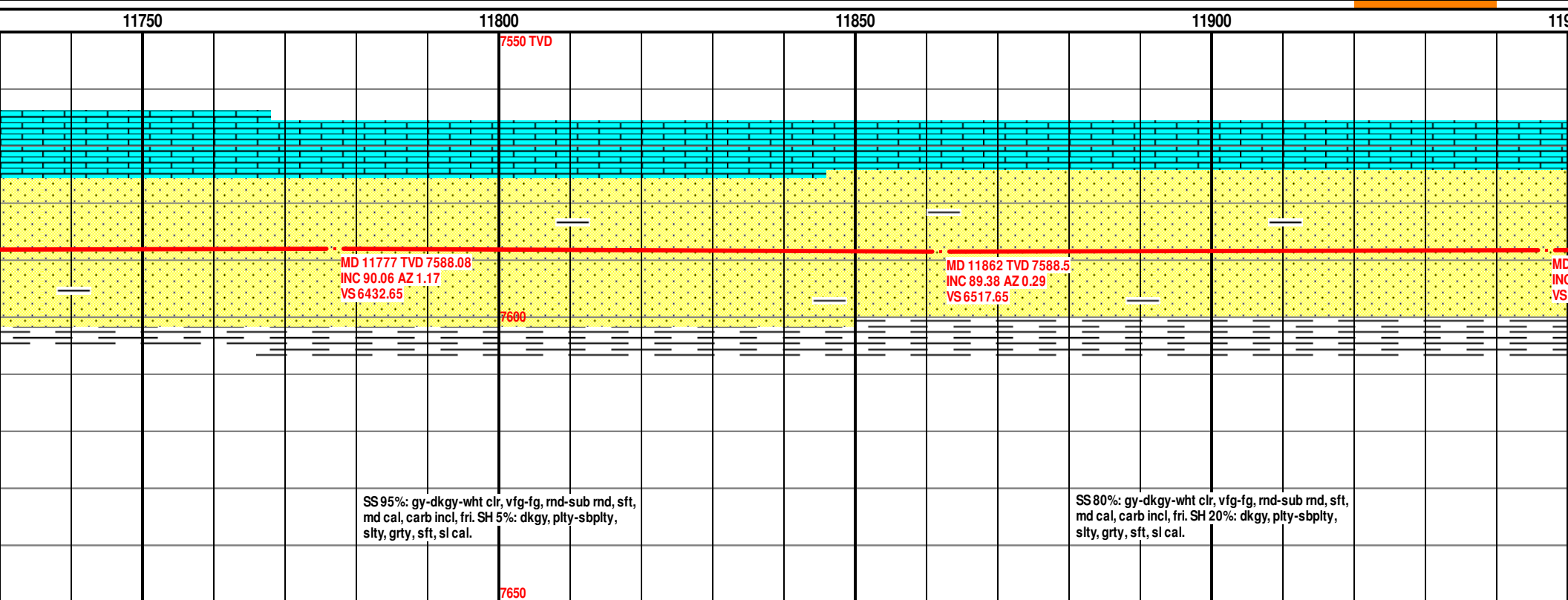
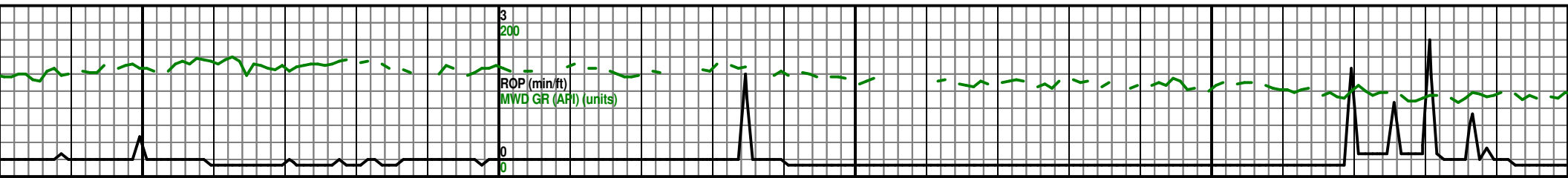


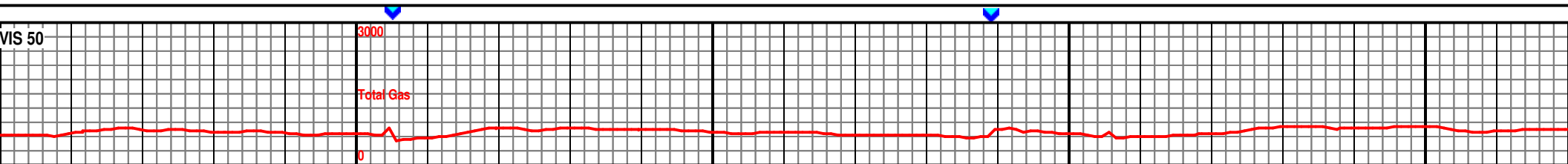
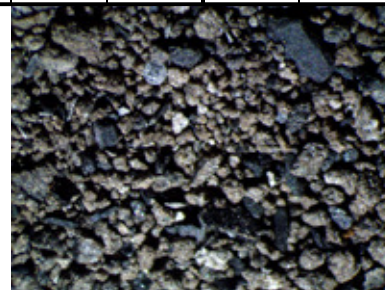
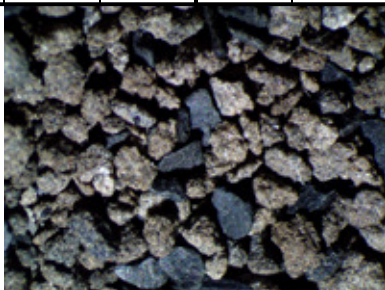
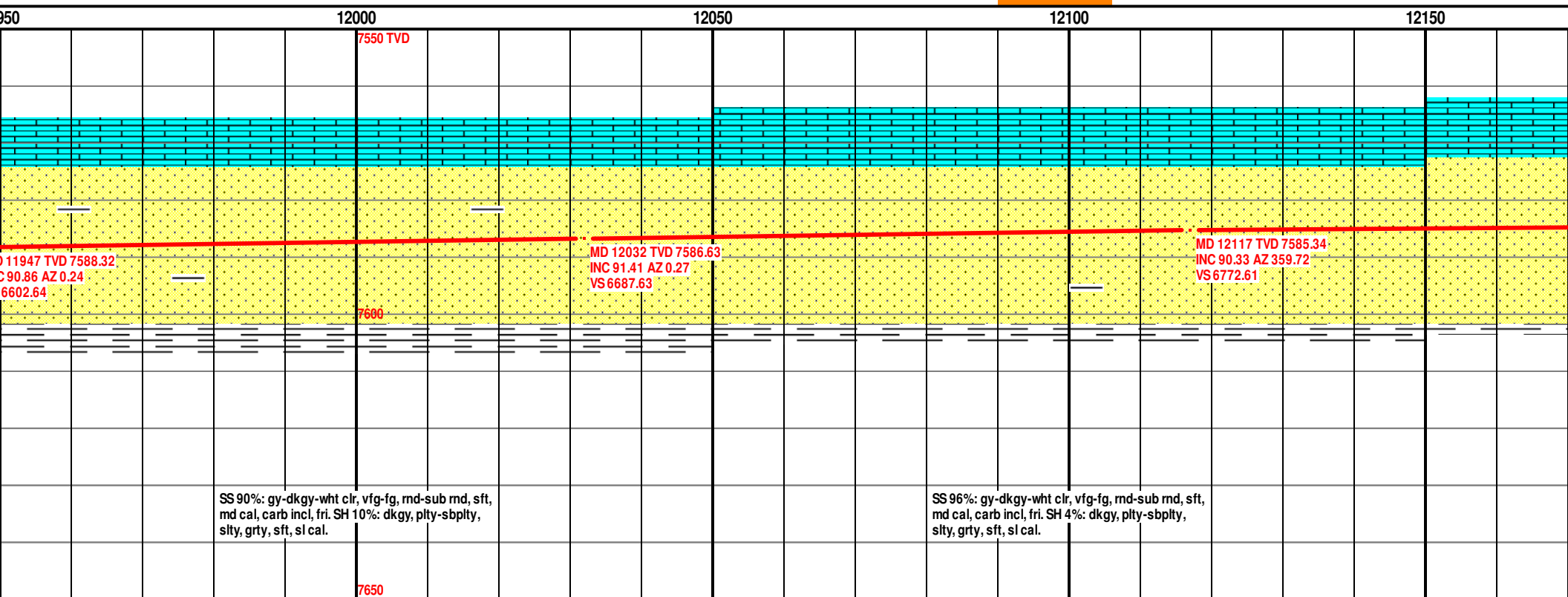
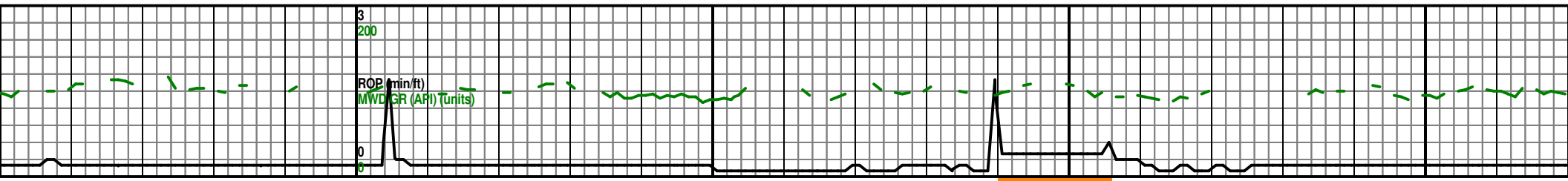


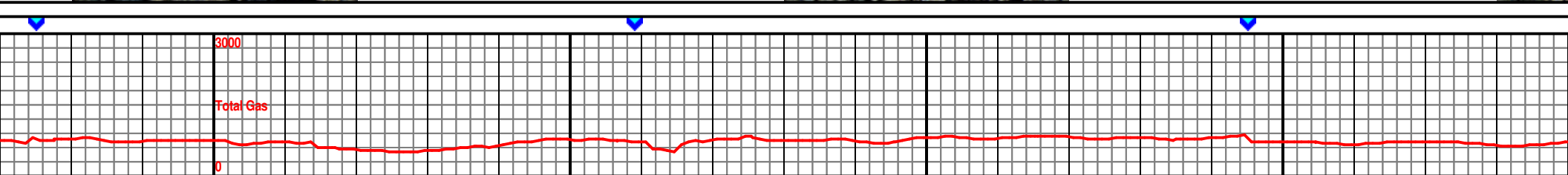
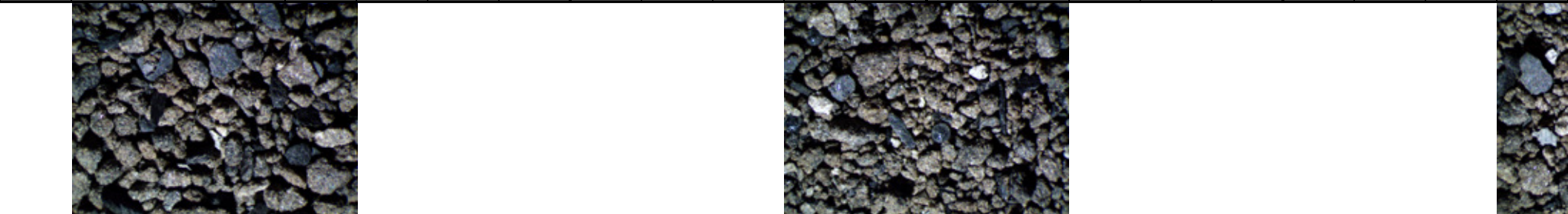
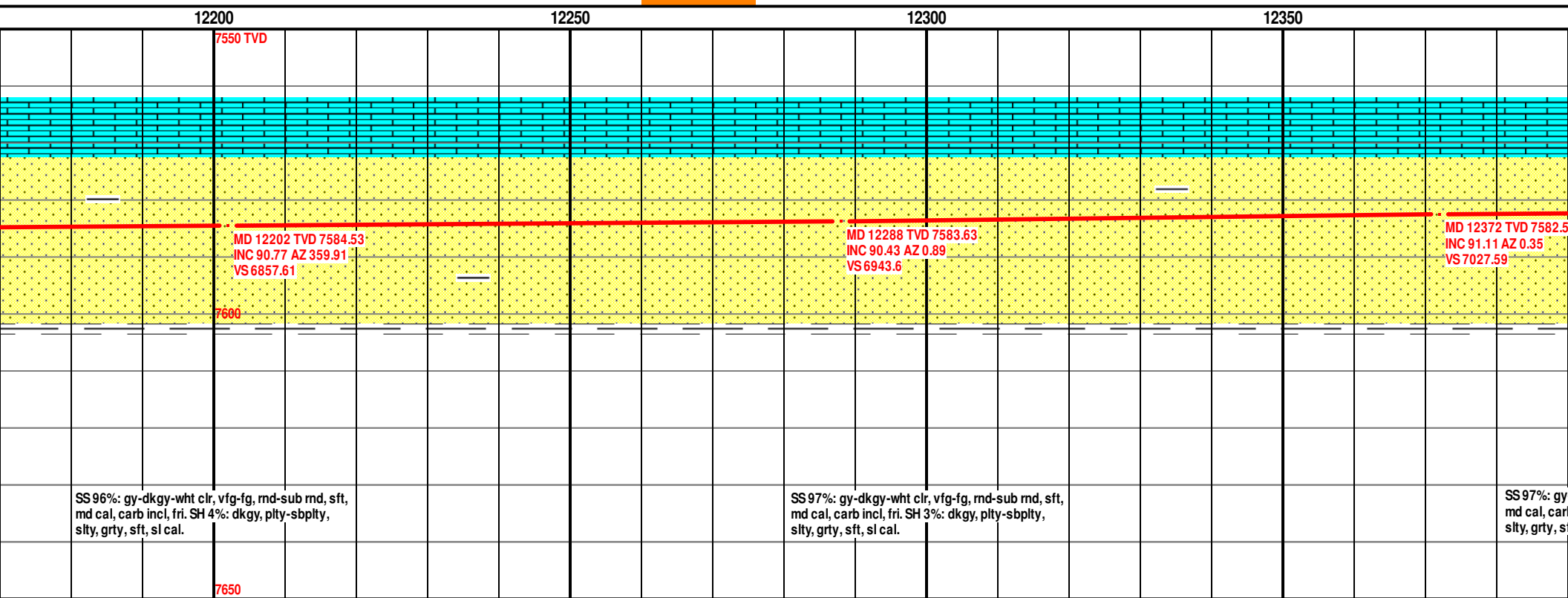
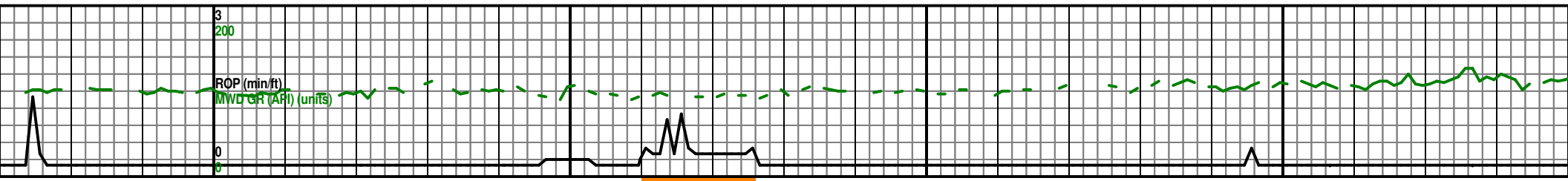


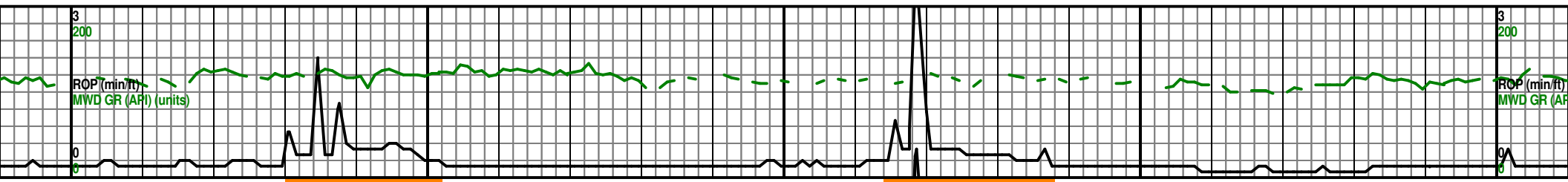












12400 12450 12500 12550 12600

