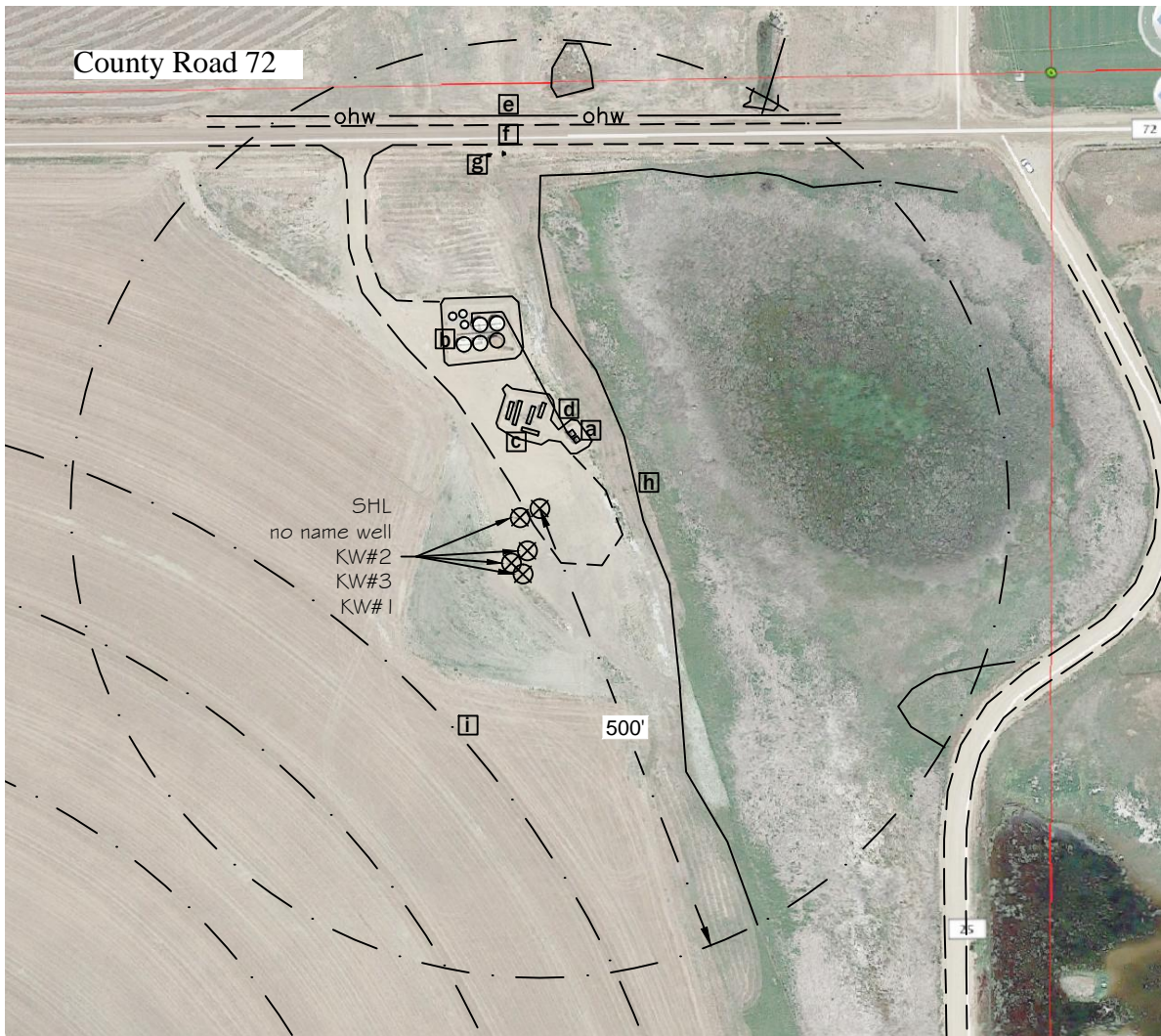


Improvement Exhibit



Notes:

- Aerial image from Google Earth.
- Distances shown are measured in US Survey feet rounded to the nearest foot.
- Topo locations listed that are greater than 600' are scaled from best mapping data available and were not survey located.

Legend:

- a closest combustor: N30°E 79"
- b closest tanks: N15°W 177'
- c closest separator: North 78'
- d overhead gas line: N20°E 86'
- e overhead wires: North 419'
- f County Rd: North 388'
- g sign-natural gas pipeline: N10°W 382'
- h edge water: N80°E 102'
- i irrigation pivot path: S45°W 230'

Nearest:

- building: S70°W 1250'
- public road: North 388'
- aboveground utility: North 419'
- nearest railroad: N80°W 6140'
- property line: North 398'

Z:\PLS Group\Project\2015\15017\dwg\15017.dwg February 23, 2015 - 7:46pm

Well Name:	KW#4	Field Date n/a	Prepared for:	Project#: 15017.001df
Section 12-T6N-R67W-6th PM, NE-NE		Party Chief n/a	Blue Chip Oil	
Weld County, Colorado		Proj. Manager MBS		
		Drawing Date 2/23/2015	PLS Group, LLC 6843 North Franklin Avenue Loveland, Colorado 80538 970.669.2100 office - 970.669.3652 fax	