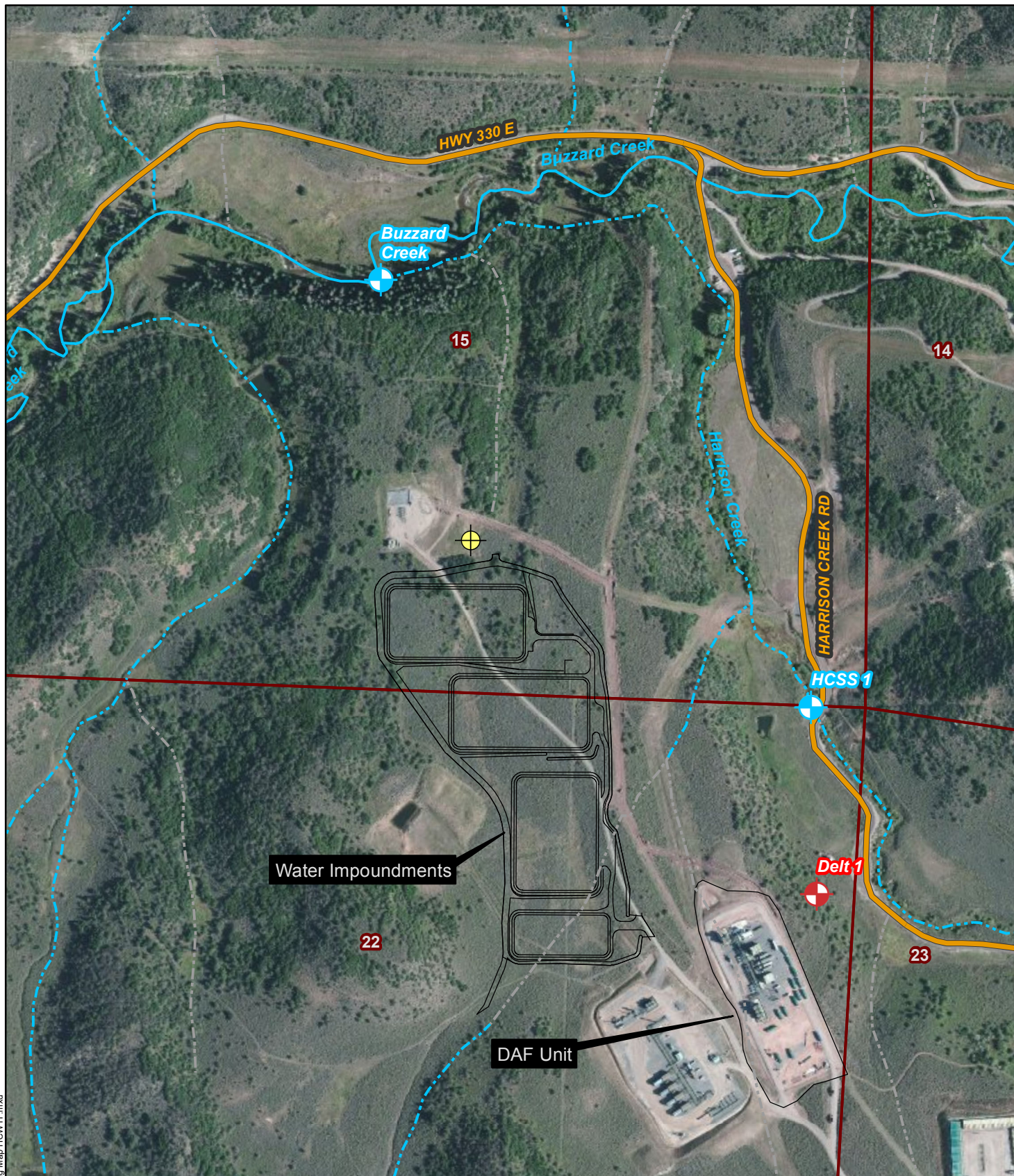


F:\Projects\014-0465\GIS\MXD\SW-1 Sensitive Wildlife Map HCWTF DAF Unit.mxd

<p>Project Number: 014-0465</p> <p>Drawn By: JWH</p> <p>Revision Date: 2/20/2015</p>	<p>Sensitive Wildlife Map</p> <p>Harrison Creek Water Treatment Facility DAF Unit Piceance Energy, LLC Mesa County, CO Sec 22, T9S, R93W, 6th PM</p>	<p>OLSSON ASSOCIATES</p> <p>760 Horizon Drive, Suite 102 Grand Junction, CO 81506 P: 970.263.7800 F: 970.263.7456</p>	<p>Figure</p> <p>SW-1</p>
--	---	---	----------------------------------

THIS PAGE LEFT BLANK FOR TWO-SIDED DUPLICATION.



DISCLAIMER : This Geographic Information System (GIS) and its components are designed as a source of reference for answering inquiries, for planning and for modeling. GIS is not intended, nor does it replace legal description information in the chain of title and other information contained in official government records such as the County Clerk and Records office or the courts. In addition, the representations of locations in this GIS cannot be substituted for actual legal surveys.

Project Number: 014-0465

Drawn By: JWH

Revision Date: 2/25/2015

Water Sample Map
Harrison Creek Water Treatment Facility
Piceance Energy, LLC
Mesa County, CO
Sec. 15 and 22, T9S, R93W, 6th PM

OLSSON
ASSOCIATES

760 Horizon Drive, Suite 102
Grand Junction, CO 81506
P: 970.263.7800
F: 970.263.7456

Figure

WS-1

THIS PAGE LEFT BLANK FOR TWO-SIDED DUPLICATION.