

VOOLSSON[®]
ASSOCIATES

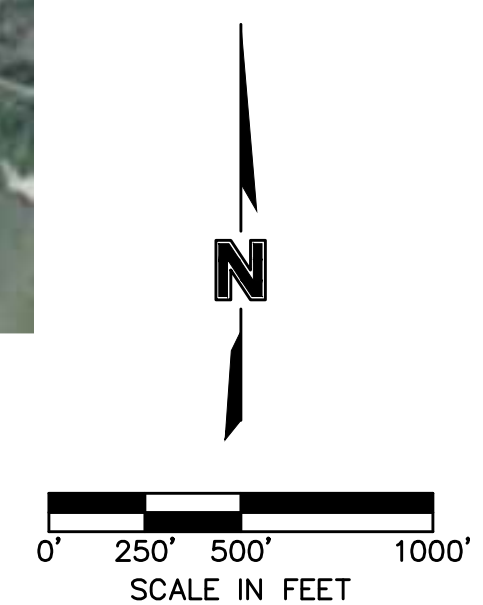
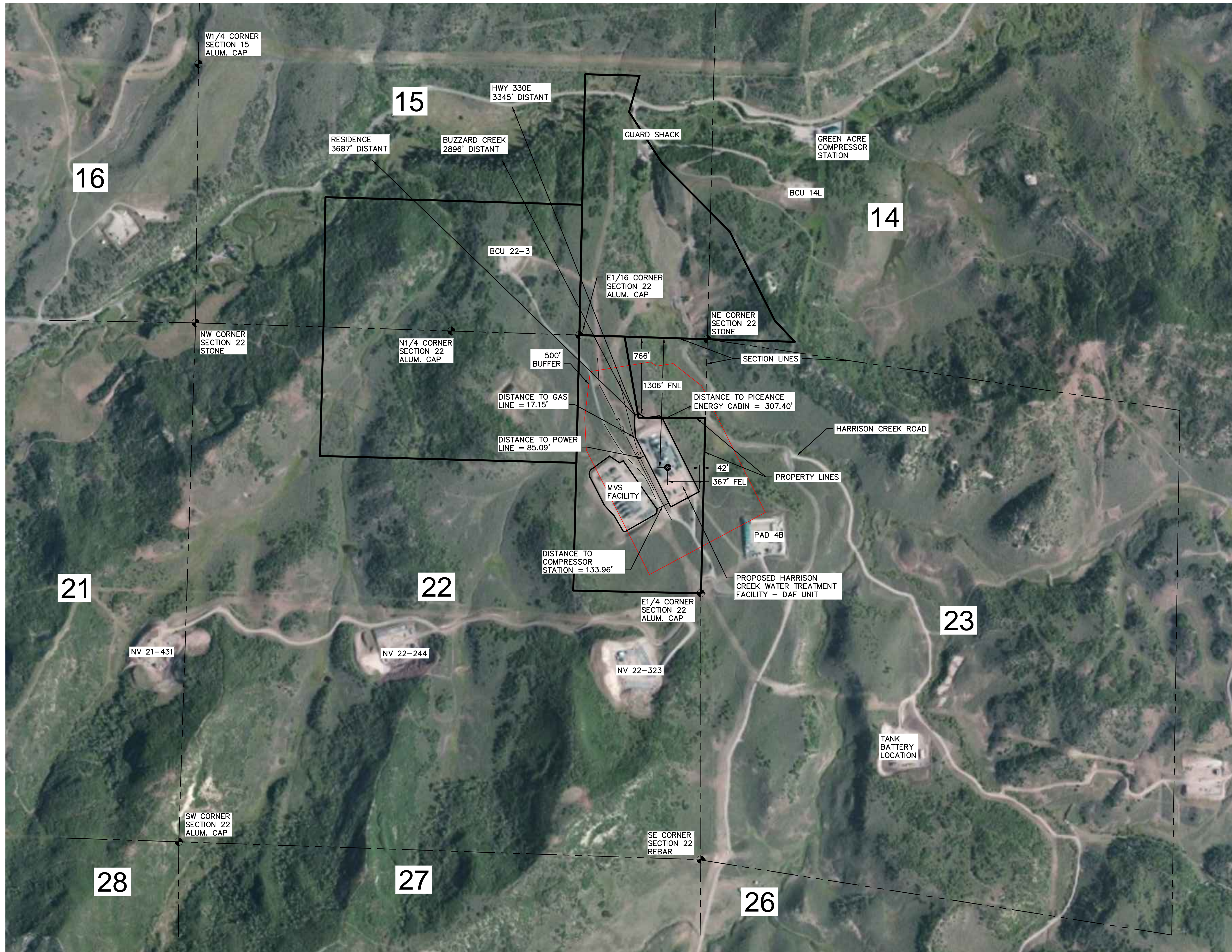
SSON ASSOCIATES ASSUMES RESPONSIBILITY FOR IDENTIFYING EXISTING UTILITY LOCATIONS (HORIZONTAL OR VERTICAL). THE EXISTING UTILITIES SHOWN ON THIS DRAWING HAVE BEEN OBTAINED FROM THE BEST AVAILABLE INFORMATION. IT IS HOWEVER THE RESPONSIBILITY OF THE CONTRACTOR TO FIELD VERIFY THE LOCATION OF ALL UTILITIES PRIOR TO THE COMMENCEMENT OF ANY CONSTRUCTION ACTIVITIES.

[illegible]

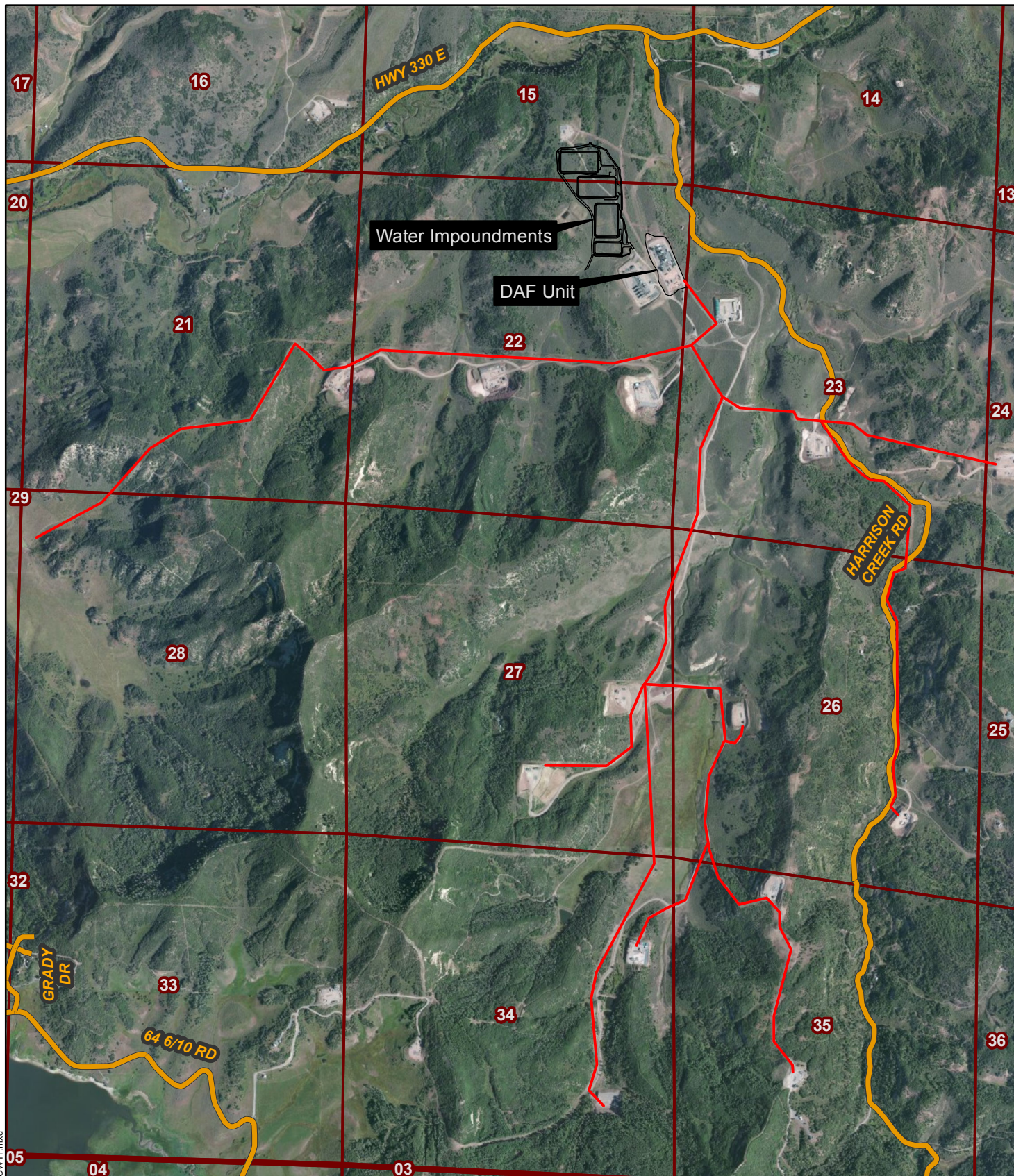
HARRISON CREEK WATER TREATMENT FACILITY	DAF UNIT
	LOCATION DRAWING
PICEANCE ENERGY, LLC	
MESA COUNTY, CO	2015

Drawn by: ABL
 Checked by: --
 Approved by: --
 A/QC by: --
 Project no.: 014-0465
 Drawing no.:
 Date: 02/20/2015

FIGURE
L-1



DWG: F:\Projects\014-0465\LDWP\Final_Plans\Permit location maps\14-0465 LMWP - PLANT.dwg
DATE: Feb 24, 2015 11:56am XREFS: 100722_DeltaPetro_BM 14-0465 XBASE USER: alhierter



- Pipeline
- Road
- Site footprint

DISCLAIMER : This Geographic Information System (GIS) and its components are designed as a source of reference for answering inquiries, for planning and for modeling. GIS is not intended, nor does it replace legal description information in the chain of title and other information contained in official government records such as the County Clerk and Records office or the courts. In addition, the representations of locations in this GIS cannot be substituted for actual legal surveys.



Project Number: 014-0465

Drawn By: JWH

Revision Date: 2/25/2015

Pipeline Map
Harrison Creek Water Treatment Facility
Piceance Energy, LLC
Mesa County, CO
Sec. 15 and 22, T9S, R93W, 6th PM

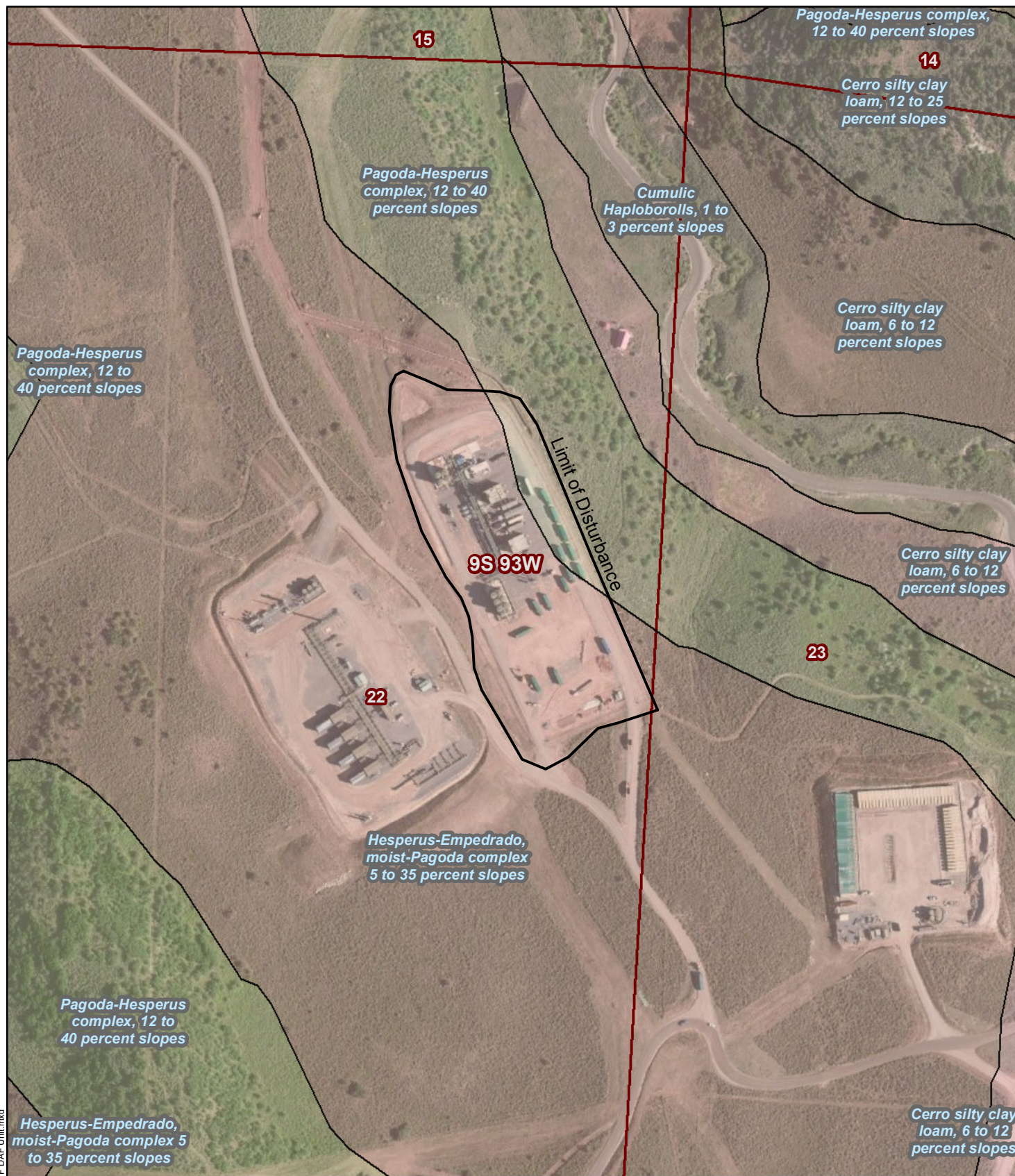
OLSSON
ASSOCIATES

760 Horizon Drive, Suite 102
Grand Junction, CO 81506
P: 970.263.7800
F: 970.263.7456

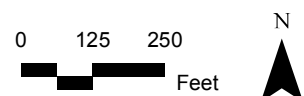
Figure

PL-1

THIS PAGE LEFT BLANK FOR TWO-SIDED DUPLICATION.



DISCLAIMER : This Geographic Information System (GIS) and its components are designed as a source of reference for answering inquiries, for planning and for modeling. GIS is not intended, nor does it replace legal description information in the chain of title and other information contained in official government records such as the County Clerk and Recorders office or the courts. In addition, the representations of locations in this GIS cannot be substituted for actual legal surveys.



Project Number: 014-0465

Drawn By: JWH

Revision Date: 2/19/2015

Soils Map
Harrison Creek Water Treatment Facility
DAF Unit
Piceance Energy, LLC
Mesa County, CO
Sec. 22, T9S, R93W, 6th PM



760 Horizon Drive, Suite 102
Grand Junction, CO 81506
P: 970.263.7800
F: 970.263.7456

Figure

S-1

F:\Projects\014-0465\GIS\MXDS-1 Soils Map HCWTF DAF Unit.mxd

THIS PAGE LEFT BLANK FOR TWO-SIDED DUPLICATION.