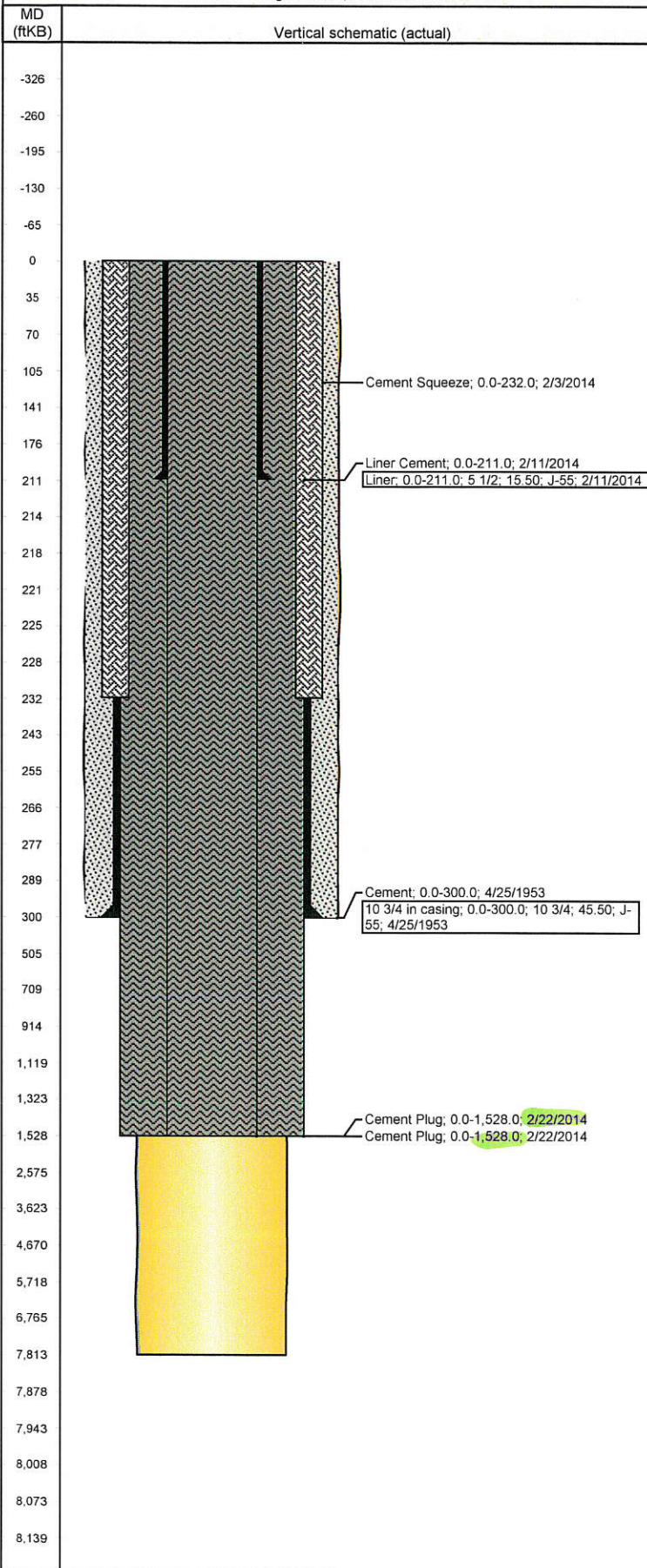


# Frac Wellbore Schematic Report

Well Name: **BRADBURY 01 API 05679**

VERTICAL - Original Hole, 2/20/2015 7:41:07 AM



## Well Header

API 05-123-05679	Business Unit DJ BASIN	District 15	Well Config VERTICAL
Original KB Elevation (ft)	KB - GL / MSL (ftKB)	Spud Date 4/23/1953	P & A Date

## Comment

WBI RE-ENTRY FOR FISCUS FED LD15-76 - 3 WELL PAD AFE: 139529

## Directions To Well

FROM WCR127 & WCR 104 (10.0 mi NORTH OF NEW RAYMER) GO NORTH 0.7 mi, GO EAST 0.3 mi. GO SOUTH 0.2 mi THEN WEST 0.05 mi INTO LOCATION

Current PBTD (ftKB)

## Bottom Hole Location

North-South Distance (ft)	From N or S Line	East-West Distance (ft)	From E or W Line
---------------------------	------------------	-------------------------	------------------

## Plug Back Total Depths

Date	Depth (ftKB)	Method	Com

## Wellbore Sections

Section Des	Size (in)	Act Top, MD (ftKB)	Act Btm, MD (ftKB)
SURFACE	13 1/2	0.0	300.0
PRODUCTION	7 7/8	300.0	7,813.0

## Zone Statuses

Zone Name	Status Date	Status	Fluid Type	Job

## Casing Strings

Csg Des	Run Date	OD (in)	Wt/Len (lb/ft)	Grade	Top, MD (ftKB)	MD (ftKB)
Liner	2/11/2014	5 1/2	15.50	J-55	0.0	211.0
10 3/4 in casing	4/25/1953	10 3/4	45.50	J-55	0.0	300.0

## Cement

Des	Top (ftKB)	Btm (ftKB)
Cement Squeeze	0.0	300.0
Liner Cement	0.0	232.0
Cement Plug	0.0	211.0
Cement Plug	0.0	1,528.0
Cement Plug	0.0	1,528.0

## Tubing Components

Item Des	OD (in)	Wt (lb/ft)	Grade	Jts	Len (ft)

## Perforation Data

Zone	Bnch/St g	Entered Shot Total	Top (ftKB)	Btm (ftKB)	Date

## Other In Hole

Run Date	Des	OD (in)	Top (ftKB)	Btm (ftKB)

## Logs

Date	Type	Top, MD (ftKB)	Btm, MD (ftKB)