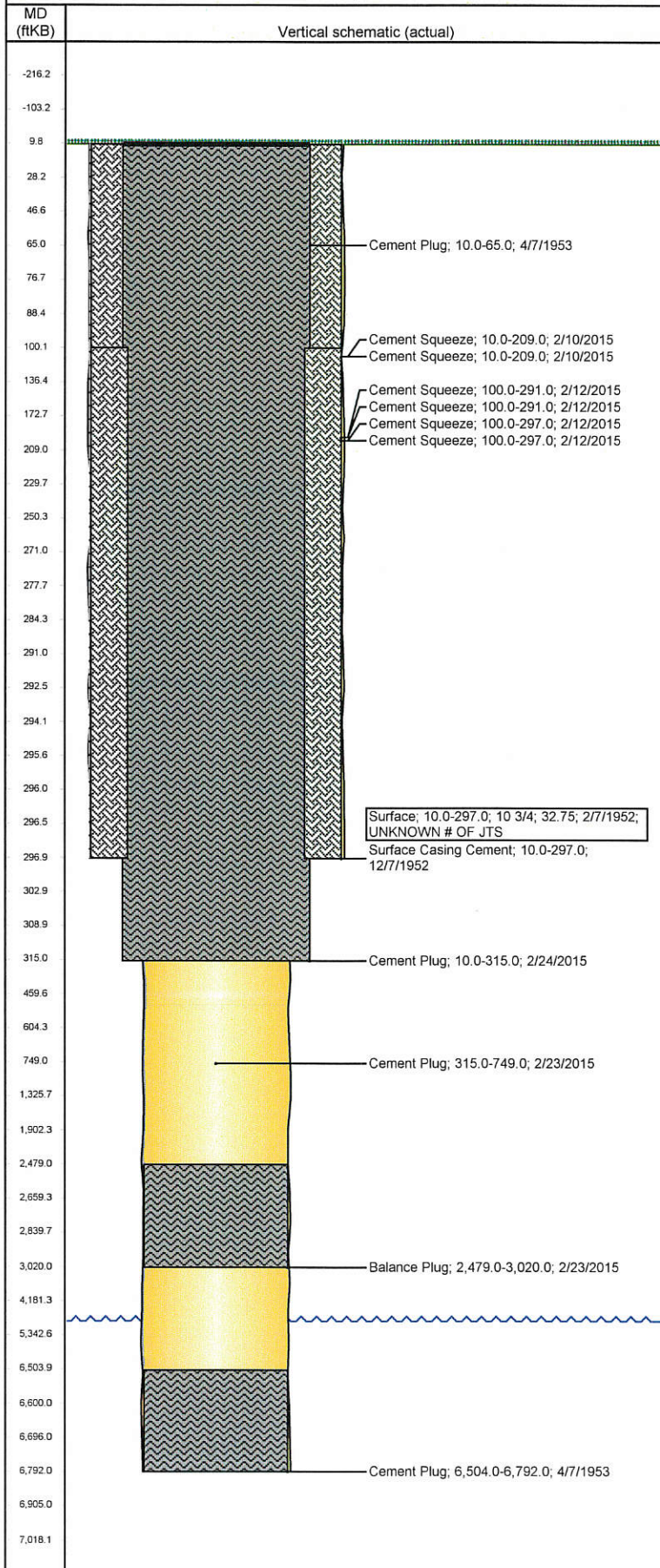


Well Name: MERRILL 1

VERTICAL - ORIGINAL HOLE, 2/25/2015 11:00:26 AM



Well Header

API	Business Unit	District	Well Config
05-123-05617	DJ BASIN	25	VERTICAL
Original KB Elevation (ft)	KB - GL / MSL (ftKB)	Spud Date	P & A Date
4,873.00	10.00	12/7/1952	2/24/2015

Comment
WELL DETAIL VERY SPARSE AND SKETCHY. NO PROD CSG SET - OPEN HOLE TO TD.

WBI - RE-ENTRY JOB

Directions To Well
CO HWY 14 & WCR 115, N 6.25 mi to WCR 100, E 2.0 mi, N 0.6, W 0.1 Into Location

Current PBTD (ftKB)
ORIGINAL HOLE - 10.0

Surface Location (Congressional)

Quarter 1	Quarter 2	Quarter 3	Quarter 4	Section	Township	Twnshp N...	Range	Rng E/W Dir
		SE	NE	26	9	N	59	W

Bottom Hole Location

North-South Distance (ft)	From N or S Line	East-West Distance (ft)	From E or W Line

Plug Back Total Depths

Date	Depth (ftKB)	Method	Com
2/25/2015	10.0	TAG	

Wellbore Sections

Section Des	Size (in)	Act Top, MD (ftKB)	Act Btm, MD (ftKB)
SURFACE	13 3/4	10.0	297.0
PRODUCTION	7 7/8	297.0	6,792.0

Zone Statuses

Zone Name	Status Date	Status	Fluid Type	Job
NIOBRARA	2/24/2015	P&A		HORIZONTAL WELL PREP, 2/9/2015 06:00

Casing Strings

Csg Des	Run Date	OD (in)	Wt/Len (lb/ft)	Grade	Top, MD (ftKB)	MD (ftKB)
Surface	2/7/1952	10 3/4	32.75		10.0	297.0

Cement

Des	Top (ftKB)	Btm (ftKB)
Surface Casing Cement	10.0	297.0
Cement Plug	6,504.0	6,792.0
Cement Plug	10.0	65.0
Cement Squeeze	10.0	209.0
Cement Squeeze	100.0	291.0
Cement Squeeze	100.0	297.0
Balance Plug	2,479.0	3,020.0
Cement Plug	315.0	749.0
Cement Plug	10.0	315.0

Tubing Components

Item Des	OD (in)	Wt (lb/ft)	Grade	Jts	Len (ft)

Perforation Data

Zone	Bnch/St g	Entered Shot Total	Top (ftKB)	Btm (ftKB)	Date

Other In Hole

Run Date	Des	OD (in)	Top (ftKB)	Btm (ftKB)

Logs

Date	Type	Top, MD (ftKB)	Btm, MD (ftKB)
12/23/1952	ELECTRICAL LOG		
12/31/1952	ELECTRICAL LOG		