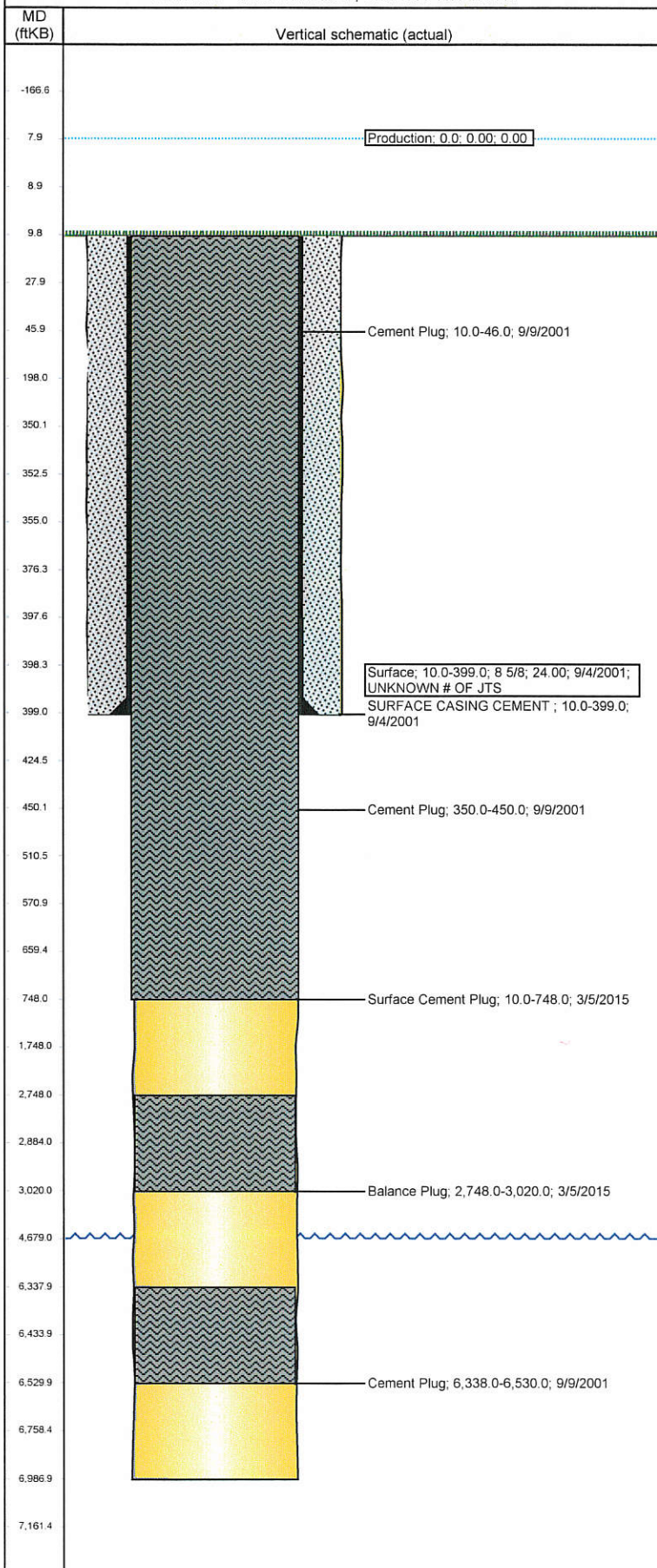


Well Name: STATE 6525 11-32

VERTICAL - ORIGINAL HOLE, 3/26/2015 11:48:50 AM



## Well Header

|                            |                      |           |             |
|----------------------------|----------------------|-----------|-------------|
| API                        | Business Unit        | District  | Well Config |
| 05-123-20367               | DJ BASIN             | 15        | VERTICAL    |
| Original KB Elevation (ft) | KB - GL / MSL (ftKB) | Spud Date | P & A Date  |
| 4,680.00                   | 10.00                | 9/4/2001  | 3/5/2015    |

## Comment

WELL DATA SPARSE AND SKETCHY.

## WBI RE-ENTRY

HORIZONTAL WELL PREP F/ WELLS RANCH STATE A36-675

## Directions To Well

From WCR 68 & WCR 67 Go 0.2 Mi East to Wells Ranch Main Gate & Turn South, Go South 0.7 Mi To End of Pavement, Road Takes a Jog to the Southeast for 0.2 Mi, Continue South for 1.2 Mi, Bear Southwest for 0.2 Mi, Then @ Crossroads, Double Back Northwest 0.4 Mi, Go Straight West 1.6 Mi, Turn Left (South) Just Past PDC 21&31-32 Battery, but Before No Oilfield Traffic & Exit Signs. Go 0.4 Mi South Then Bear Southwest, Go 0.3 Mi & Turn North Between Separator & Tank Battery on PDC 6525-32, Go North 0.1 Mi Through PDC State 14&32 & 13-32 Location 0.1 Mi North to fence on North Side of Location, Go 0.2 North Crossing Pipeline ROW to Rod Gate. Go 0.15 Through 2nd Rod Gate Then North 0.2 Mi Past PDC 12-13 Well To Location.

## Current PBTD (ftKB)

## Surface Location (Congressional)

|           |           |           |           |         |          |              |       |             |
|-----------|-----------|-----------|-----------|---------|----------|--------------|-------|-------------|
| Quarter 1 | Quarter 2 | Quarter 3 | Quarter 4 | Section | Township | Twntshp N... | Range | Rng E/W Dir |
|           |           | NW        | NW        | 32      | 6        | N            | 63    | W           |

## Bottom Hole Location

|                           |                  |                         |                  |
|---------------------------|------------------|-------------------------|------------------|
| North-South Distance (ft) | From N or S Line | East-West Distance (ft) | From E or W Line |
|                           |                  |                         |                  |

## Plug Back Total Depths

| Date | Depth (ftKB) | Method | Com |
|------|--------------|--------|-----|
|      |              |        |     |

## Wellbore Sections

| Section Des | Size (in) | Act Top, MD (ftKB) | Act Btm, MD (ftKB) |
|-------------|-----------|--------------------|--------------------|
| SURFACE     | 12 1/4    | 10.0               | 399.0              |
| PRODUCTION  | 7 7/8     | 399.0              | 6,987.0            |

## Zone Statuses

| Zone Name | Status Date | Status | Fluid Type | Job                                   |
|-----------|-------------|--------|------------|---------------------------------------|
| NIOBRARA  | 3/5/2015    | P&A    | Gas        | HORIZONTAL WELL PREP, 2/25/2015 06:00 |

## Casing Strings

| Csg Des    | Run Date | OD (in) | Wt/Len (lb/ft) | Grade | Top, MD (ftKB) | MD (ftKB) |
|------------|----------|---------|----------------|-------|----------------|-----------|
| Production |          |         |                |       |                |           |
| Surface    | 9/4/2001 | 8 5/8   | 24.00          |       | 10.0           | 399.0     |

## Cement

| Des                   | Top (ftKB) | Btm (ftKB) |
|-----------------------|------------|------------|
| SURFACE CASING CEMENT | 10.0       | 399.0      |
| Cement Plug           | 10.0       | 46.0       |
| Cement Plug           | 350.0      | 450.0      |
| Cement Plug           | 6,338.0    | 6,530.0    |
| Balance Plug          | 2,748.0    | 3,020.0    |
| Surface Cement Plug   | 10.0       | 748.0      |

## Tubing Components

| Item Des | OD (in) | Wt (lb/ft) | Grade | Jts | Len (ft) |
|----------|---------|------------|-------|-----|----------|
|          |         |            |       |     |          |

## Perforation Data

| Zone | Bnch/St g | Entered Shot Total | Top (ftKB) | Btm (ftKB) | Date |
|------|-----------|--------------------|------------|------------|------|
|      |           |                    |            |            |      |

## Other In Hole

| Run Date | Des | OD (in) | Top (ftKB) | Btm (ftKB) |
|----------|-----|---------|------------|------------|
|          |     |         |            |            |

## Logs

| Date     | Type                | Top, MD (ftKB) | Btm, MD (ftKB) |
|----------|---------------------|----------------|----------------|
| 9/8/2001 | COMPENSATED DENSITY | 399.0          | 6,990.0        |